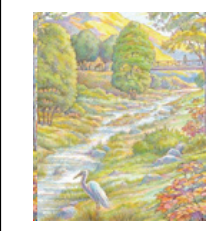


# Attachment 9



## Planning Watershed Area: Brush Creek (Map 1 of 2)

- |  |   |
|--|---|
| <p><b>Creeks</b></p> <ul style="list-style-type: none"> <li><span style="color: blue;">—</span> Natural</li> <li><span style="color: green;">—</span> Modified</li> <li><span style="color: blue;">—</span> Modified-Natural</li> <li><span style="color: blue;">---</span> Culvert</li> <li><span style="color: blue;">R R</span> Proposed Restoration</li> <li>● Endpoints of Creek Reach</li> </ul> <p><b>Ownership/Land Use</b></p> <ul style="list-style-type: none"> <li><span style="background-color: orange; border: 1px solid black; display: inline-block; width: 10px; height: 10px;"></span> City Properties</li> <li><span style="background-color: brown; border: 1px solid black; display: inline-block; width: 10px; height: 10px;"></span> Sonoma County Water Agency</li> <li><span style="background-color: lightblue; border: 1px solid black; display: inline-block; width: 10px; height: 10px;"></span> Other Public Entities</li> <li><span style="background-color: lightgreen; border: 1px solid black; display: inline-block; width: 10px; height: 10px;"></span> School Properties</li> <li><span style="background-color: lightyellow; border: 1px solid black; display: inline-block; width: 10px; height: 10px;"></span> Existing Parks/Open Space</li> <li><span style="border: 2px solid red; display: inline-block; width: 10px; height: 10px;"></span> City Limits</li> <li><span style="border: 2px dashed red; display: inline-block; width: 10px; height: 10px;"></span> Urban Growth Boundary</li> </ul> <p><b>Existing Access Roads/Trails</b></p> <ul style="list-style-type: none"> <li><span style="border-bottom: 2px solid black; width: 10px; display: inline-block;"></span> Paved Trail</li> <li><span style="border-bottom: 2px solid orange; width: 10px; display: inline-block;"></span> Unpaved Access Road/Trail</li> <li><span style="border-bottom: 2px solid brown; width: 10px; display: inline-block;"></span> Dirt/Soft Surface</li> <li><span style="border-bottom: 2px solid orange; width: 10px; display: inline-block;"></span> Closed Access Road</li> <li><span style="color: blue;">✦</span> Existing Trail Bridge</li> <li><span style="color: blue;">⊙</span> Existing Undercrossing</li> <li><span style="color: blue;">▲</span> Existing Off-Street Entry</li> </ul> | <p><b>Existing Bikeways</b></p> <ul style="list-style-type: none"> <li><span style="color: magenta;">- - -</span> Class 1 (Path separate from traffic)</li> <li><span style="color: magenta;">- - -</span> Class 2 (Lane painted on street)</li> <li><span style="color: magenta;">- - -</span> Class 3 (Signed route)</li> </ul> <p><b>Proposed Trails and Connections</b></p> <ul style="list-style-type: none"> <li><span style="color: yellow;">---</span> Planned Street Extension</li> <li><span style="color: yellow;">---</span> Planned Paved Trail</li> <li><span style="color: yellow;">---</span> SMART Trail</li> <li><span style="color: yellow;">P P</span> Pave Existing Access Road/Trail</li> <li><span style="color: yellow;">○ ○</span> Open Currently Closed Access Road</li> <li><span style="color: yellow;">✦</span> Planned Trail Bridge</li> <li><span style="color: yellow;">⊙</span> Planned Undercrossing</li> <li><span style="color: yellow;">▲</span> Planned Off-Street Entry</li> </ul> <p><b>Planned Open Space/Parks</b></p> <ul style="list-style-type: none"> <li><span style="color: green;">▲</span> Planned Community Park</li> <li><span style="color: green;">▲</span> Planned Neighborhood Park</li> <li><span style="color: green;">●</span> Potential Public Plaza and Gathering Space</li> </ul> |
|--|---|
- This map is part of the City of Santa Rosa Citywide Creek Master Plan, 2013. Based on data from the Citywide Creek Master Plan (2007). Updated in 2013. City of Santa Rosa GIS from Asset Management and Information Technology, 2011 Aerials are shown.
- Map Produced by City of Santa Rosa, Stormwater and Creeks Division. Date: 5/24/2013



0 1,000 2,000 Feet

