

COVID-19 Monitoring In Wastewater

Regional Technical Advisory
Committee
March 10, 2022



OUR FUTURE IN EVERY DRÖP

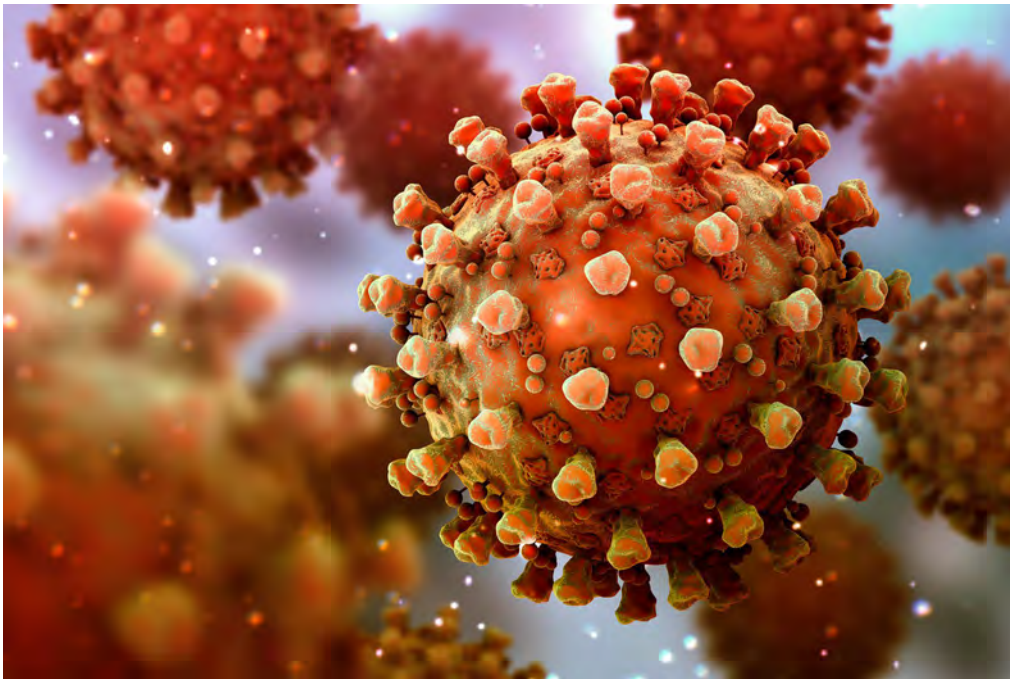
COVID-19 Cases and Deaths in USA

	Total Reported	On March 7, 2022	7-Day Average
Cases	77,355,034	42,904	36,215
Deaths	935,422	1,036	1,120



OUR FUTURE IN EVERY DRÖP

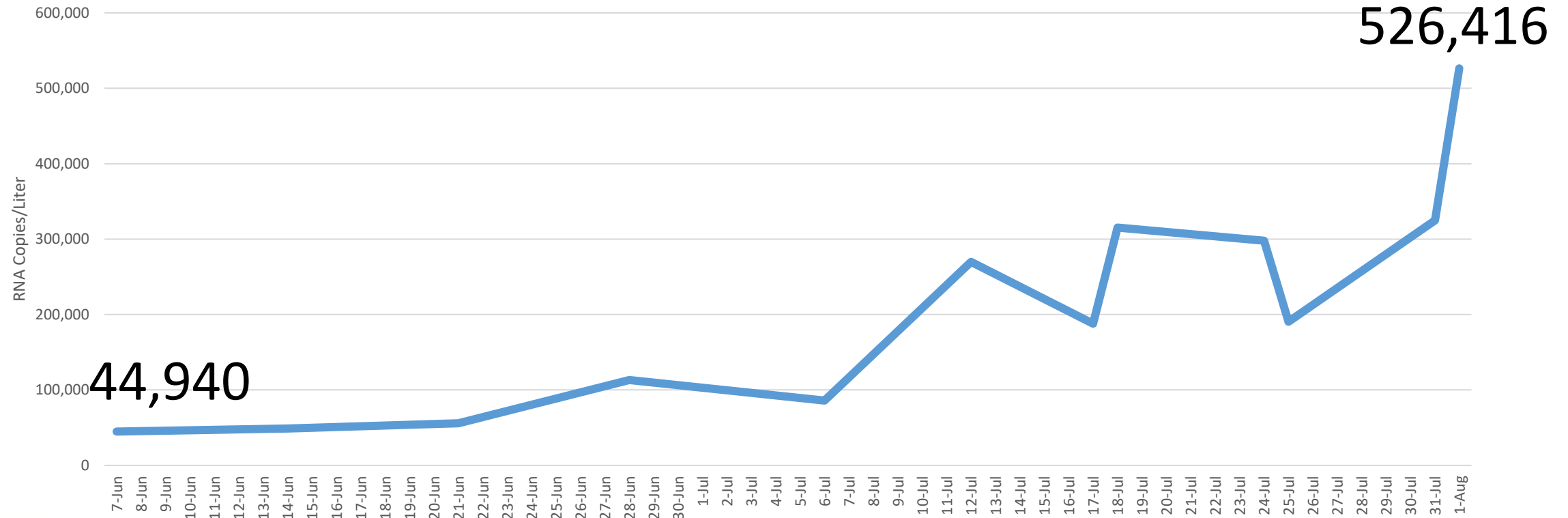
Covid-19 Tracking



- Covid-19 infections are under reported
- People shed virus in stool 3-4 days after infection
- Virus does not survive in sewer, but dead viruses leave RNA traces that can be detected and analyzed

Previous Study Virus Increase Over 10 Weeks

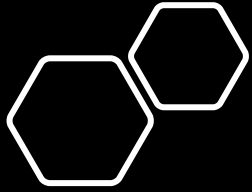
SARS CoV-2 Virus Load in LTP Influent



OUR FUTURE IN EVERY DRÖP

Current Studies

- Sending two samples per week to Luminultra
- Sending one sample per week to Biobot
- Both labs are doing RNA analyses to determine the relative amount of strains



Data - Biobot



- Wastewater
- Clinical cases per 100k

Summary

- Monitoring wastewater for infectious diseases can be more effective than using testing services
 - Almost everybody sheds into a wastewater treatment plant
 - Some people get tested frequently, others not at all
- Sonoma County Public Health is interested in collaborating with LTP to monitor wastewater



OUR FUTURE IN EVERY DRÖP