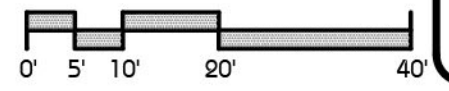




8' W/W Mesh Fence Typ.



Recess Storage
4924 Highway 12
Santa Rosa, California
Recess Development Company

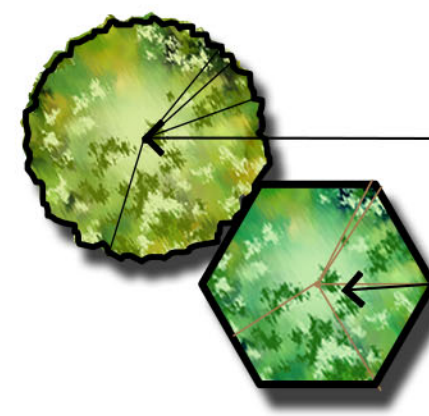
Preliminary Plan

Copyright © 2021 HWA Landscape Architecture. All rights reserved. This drawing, including all plans and specifications, is the original work product of HWA Landscape Architecture. It is to be used only for the project and site for which it was prepared. Any reuse or alteration of this drawing without the written permission of HWA Landscape Architecture is prohibited.

| | |
|---------------|----------------|
| date: 0 | drawn by: rw |
| scale: 1"=20' | job no: 18.007 |
| revisions: | |
| 1. 11.15.2021 | |
| 2. 04.22.2022 | |

sheet:
L.1
of 2 sheets

Planting Legend



CANOPY TREE (Selection Options):
 Quercus agrifolia
 Quercus lobata

24" & 36" Box
 COAST LIVE OAK
 VALLEY OAK

Water Use
 Low
 Low

SMALL ACCENT TREE (Selection Options):
 Cercis canadensis
 Pyrus c. 'Chanticleer'

24" & 36" Box
 EASTEN REDBUD
 CHANTICLEER PEAR

Low



LARGE SHRUB (Selection Options):
 Arbutus unedo
 Arcostaphylos spp.
 Ceanothus 'Dark Star'
 Lavatera assurgentiflora
 Rhus ovata
 Rhamnus californicum

15-Gal
 STRAWBERRY TREE
 MANZANITA
 WILD LILAC
 TREE MALLOW
 SUGAR BUSH
 COFFEEBERRY

Low
 Low
 Low
 Moderate
 Low
 Low



MEDIUM SHRUB (Selection Options):
 Berberis t. 'Atropurpurea'
 Callistemon v. 'Little John'
 Diets iridioides
 Lavandula spp.
 Phormium t. 'Bronze Baby'
 Pittosporum spp.
 Rhamphiolepis umbellata
 Salvia leucantha
 Teucrium fruticans

5-Gal
 BARBERRY
 BOTTLEBRUSH
 FORTNIGHT LILY
 LAVENDER
 DWARF NEW ZELAND FLAX
 PITTOSPORUM
 INDIA HAWTHORN
 MEXICAN SAGE
 BUSH GERMANDER

Moderate
 Low
 Low
 Low
 Low
 Moderate
 Low
 Low
 Low



SUB SHRUB (Selection Options):
 Hemerocallis
 Scaevola 'Maive Clusters'
 Lavandula a. 'Blue cushion'
 Teucrium chamaedrus

1-Gal
 DAY LILY
 SCAEVOLA
 LAVANDER
 GERMANDER

Moderate
 Low
 Low
 Low



GROUND COVER (Selection Options):
 Erigeron karvinskianus

1-Gal & Liners
 MEXICAN DAISY

Low



Carex pansa

CALIFORNIA MEADOW SEDGE

Low



Baccharis p. 'Pigeon Point'
 Lippia nodiflora

COYOTE BUSH
 KURAPIA (Sod)

Low
 Low

Notes

1. All landscape and irrigation shall conform to the standards of the City and State wide landscape regulations and guidelines and all other Landscape related City and Regional standards.

2. All plant materials have been selected in accordance with:
 + WULCOS Project "Water-Use Classification of Landscape Species"
 California Department of Water Resources

TREE MITIGATION MEASURES CHART

The sum of the diameter of all native trees = 711 inches 60 of these trees are Heritage trees
 689 inches/6 inches = 114.8 inches * 2 = 230 15-gallon trees or 37 - 36" Box and 15 - 24" Box Trees

| TREE REPLACEMENTS | REQUIRED TREES | | PHASE 1 TREES | |
|------------------------|----------------|-----------|---------------|-----------|
| | 24" Box | 36" BOX | 24" Box | 36" BOX |
| Quercus lobata | 0 | 4 | 0 | 4 |
| Quercus Agrifolia | 0 | 19 | 0 | 4 |
| Pistacia chinensis | 0 | 3 | 0 | 3 |
| Cercis canadensis | 6 | 12 | 0 | 0 |
| Pyrus c. 'Chanticleer' | 15 | 0 | 5 | 0 |
| TOTAL | 21 | 38 | 5 | 11 |



Quercus ilex



Quercus lobata



Pistacia chinensis



Cercis canadensis



Pyrus c. 'chanticleer'



Arbutus unedo



Ceanothus 'Dark Star'



Lavatera
assurgentiflora



Berberis t.
'Atropurpurea'



Pittosporum t.
'Variegata'



Callistemon v.
'Little John'



Diets iridioides



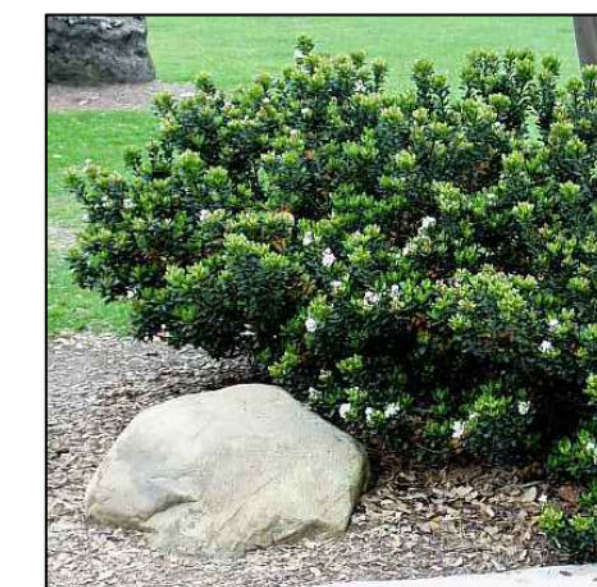
Lavanula angustifolia



Phormium 'Bronze
Baby'



Scaevola



Rhamphiolepis
umbellata



Salvia leucantha



Teucrium fruticans



Hemerocallis



Lavandula a 'Blue cushion'



Erigeron Karvinskianus



Lippia nodiflora



Carex pansa



Baccharis p. 'Pigeon
point'



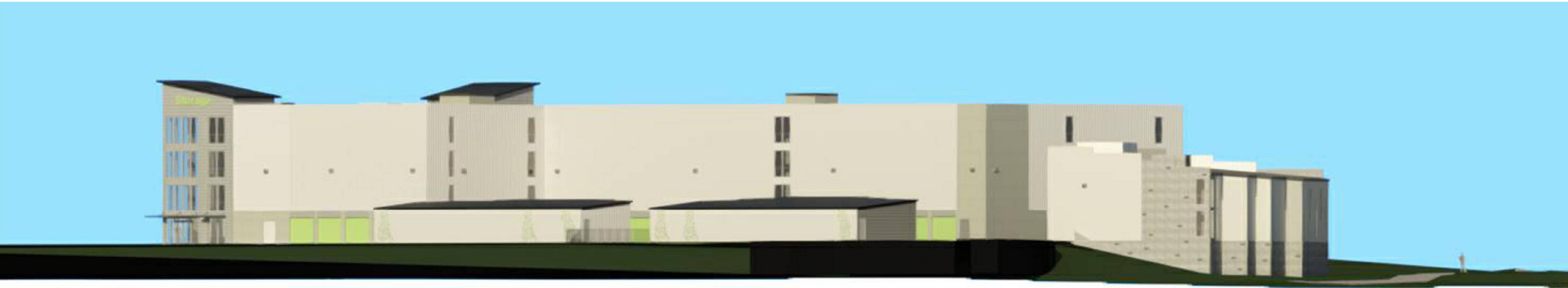
Recess Storage
 4924 Highway 12
 Santa Rosa, California
 Recess Development Company

Preliminary Plan
Copyright © 2011 HWA Landscape Architecture. All rights reserved. This drawing and plan set form on this sheet are the original work product of HWA. No part of this drawing or plan set may be reproduced or transmitted in any form or by any means, electronic or mechanical, including photocopying, recording, or by any information storage and retrieval system, without the written permission of HWA Landscape Architecture.

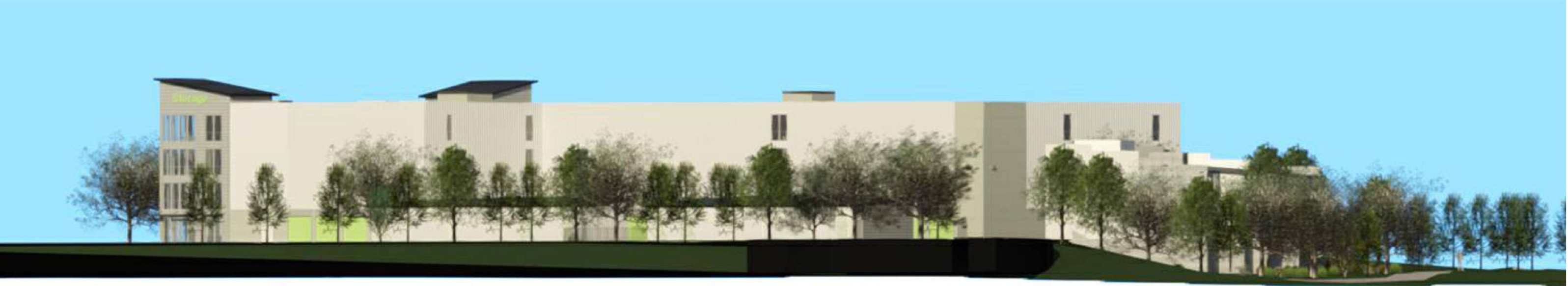
date: 0
 scale: 1"=20'
 revisions:
 1, 11, 15, 2021

sheet:

L.2
 of 2 sheets



3D VIEWS FROM STREAMSIDE DRIVE



| | | | | | |
|-------------|-----------|---------------|---|---|------------------------|
| ISSUED FOR: | Feb. 2022 | DESIGN REVIEW |  85 Keystone Avenue, Suite E Reno, Nevada 89503 Tel (775) 813-6887 | SELF STORAGE 4465 & 4480 Streamside Dr Santa Rosa, CA 95409 Sonoma County APN 032-010-005 | DWG # DR 3.3 |
| | DATE | DESCRIPTION | | | |



3D VIEWS FROM STREAMSIDE DRIVE



| | | |
|-------------|-----------|---------------|
| ISSUED FOR: | Feb. 2022 | DESIGN REVIEW |
| | DATE | DESCRIPTION |



 85 Keystone Avenue, Suite E
 Reno, Nevada 89503
 Tel (775) 813-6887

SELF STORAGE
 4465 & 4480 Streamside Dr
 Santa Rosa, CA 95409
 Sonoma County APN 032-010-005

DWG #
DR 3.4




3D VIEWS FROM EXISTING TRAIL

| | | | | | |
|-------------|-----------|---------------|---|---|------------------------|
| ISSUED FOR: | Feb. 2022 | DESIGN REVIEW |  85 Keystone Avenue, Suite E Reno, Nevada 89503 Tel (775) 813-6887 | SELF STORAGE 4465 & 4480 Streamside Dr Santa Rosa, CA 95409 Sonoma County APN 032-010-005 | DWG # DR 3.5 |
| | DATE | DESCRIPTION | | | |



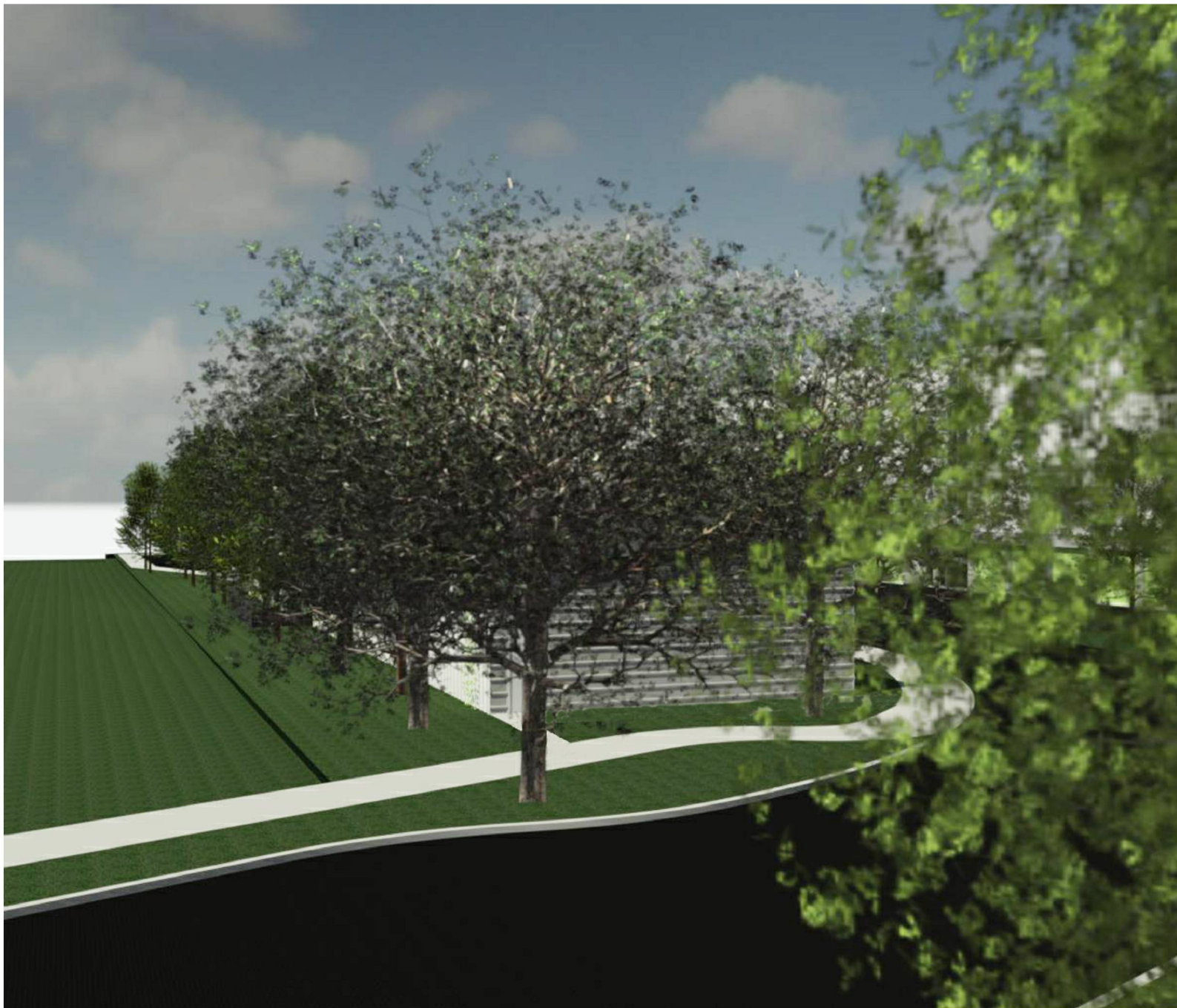
3D VIEWS FROM EXISTING TRAIL

| | | | | | |
|-------------|-----------|---------------|---|---|------------------------|
| ISSUED FOR: | Feb. 2022 | DESIGN REVIEW |  85 Keystone Avenue, Suite E Reno, Nevada 89503 Tel (775) 813-6887 | SELF STORAGE 4465 & 4480 Streamside Dr Santa Rosa, CA 95409 Sonoma County APN 032-010-005 | DWG # DR 3.6 |
| | DATE | DESCRIPTION | | | |



3D VIEWS FROM STREAMSIDE DRIVE

| | | | | | |
|-------------|-----------|---------------|---|---|------------------------|
| ISSUED FOR: | Feb. 2022 | DESIGN REVIEW |  85 Keystone Avenue, Suite E Reno, Nevada 89503 Tel (775) 813-6887 | SELF STORAGE 4465 & 4480 Streamside Dr Santa Rosa, CA 95409 Sonoma County APN 032-010-005 | DWG # DR 3.7 |
| | DATE | DESCRIPTION | | | |



3D VIEWS FROM STREAMSIDE DRIVE

| | | | | | |
|-------------|-----------|---------------|---|---|------------------------|
| ISSUED FOR: | Feb. 2022 | DESIGN REVIEW |  85 Keystone Avenue, Suite E Reno, Nevada 89503 Tel (775) 813-6887 | SELF STORAGE 4465 & 4480 Streamside Dr Santa Rosa, CA 95409 Sonoma County APN 032-010-005 | DWG # DR 3.8 |
| | DATE | DESCRIPTION | | | |