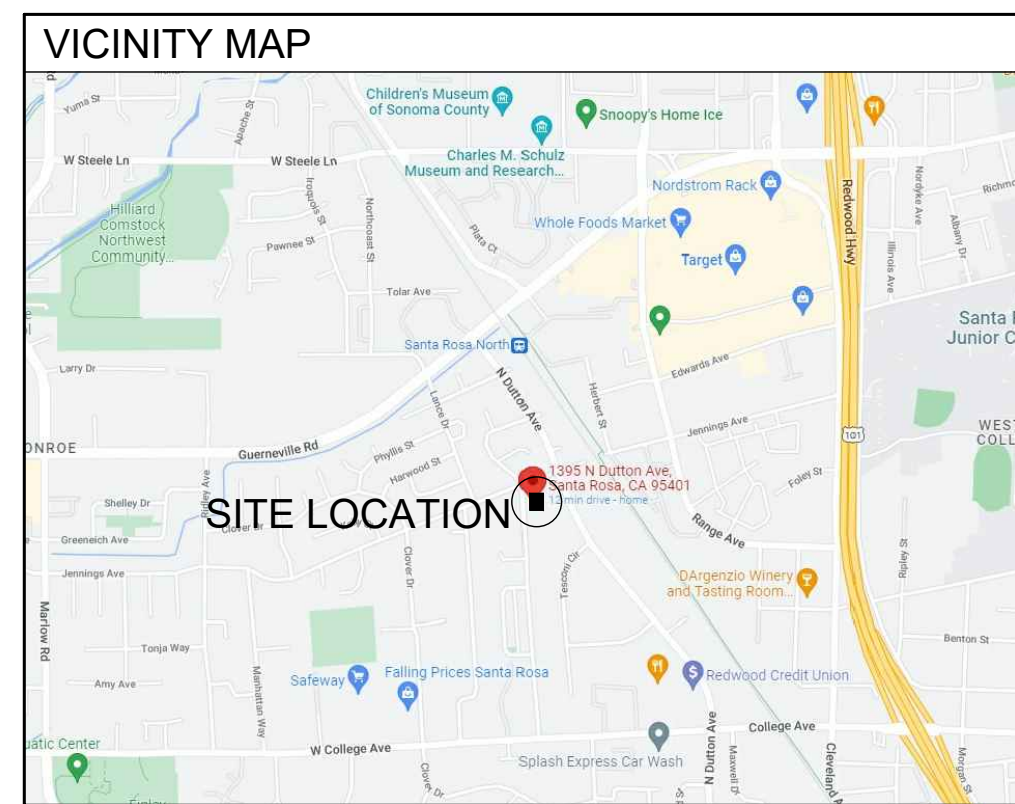


TENANT IMPROVEMENT 1425-1435 N. DUTTON AVE. SANTA ROSA, CA 95401

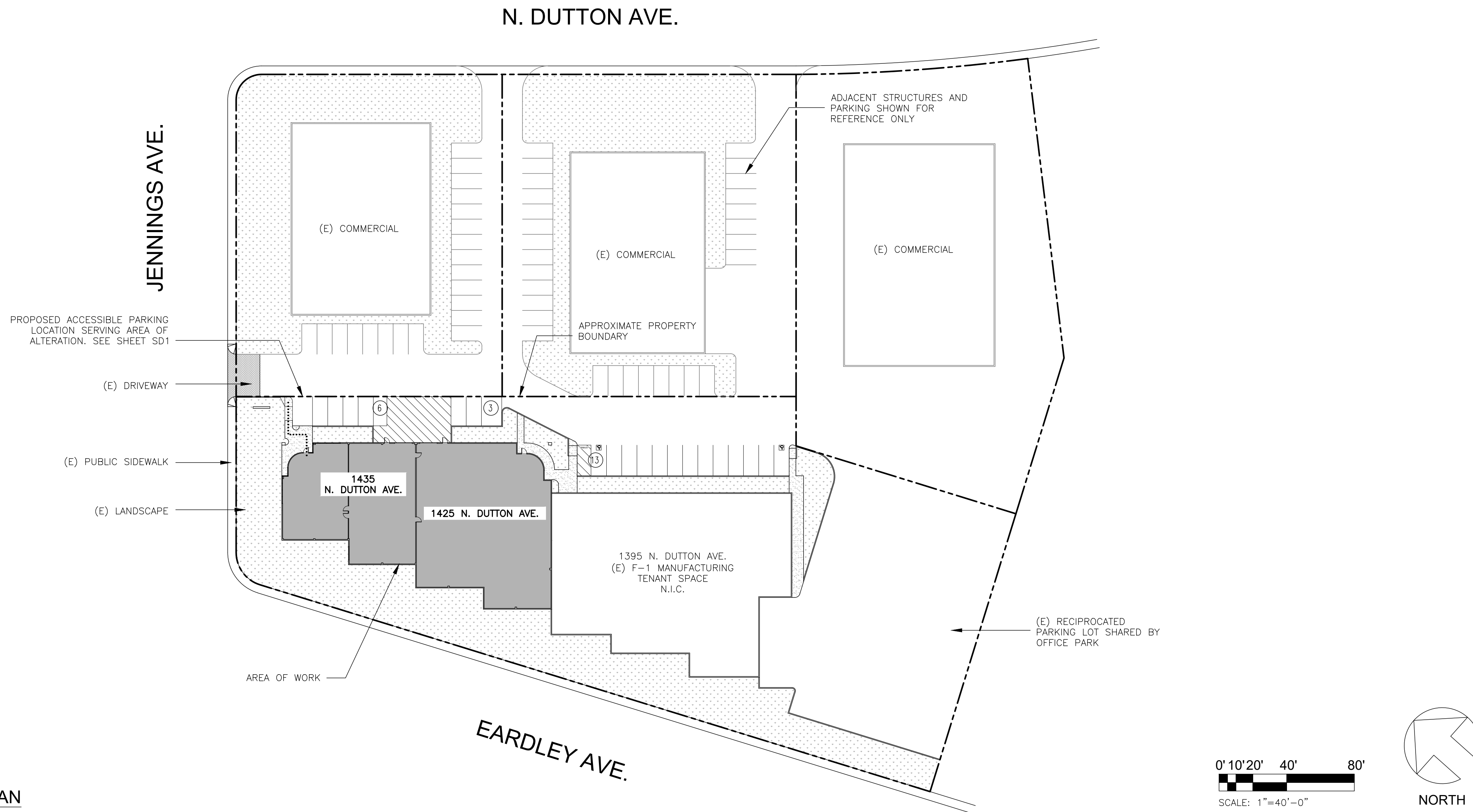
City of Santa Rosa
Planning & Economic
Development Department
07/12/2022
RECEIVED

SHEET INDEX	
CVR	COVER SHEET
SD1	SITE DETAILS
A0	CODE ANALYSIS
A1	PROPOSED FLOOR PLAN
AS1	ACCESSIBILITY
E0.1	ELECTRICAL COVER SHEET
E2.1	POWER PLAN
E6.1	PANEL SCHEDULES

SCOPE OF WORK	
TENANT AT 1425 N. DUTTON IS PROPOSING TO LEASE THE ADJACENT VACANT TENANT SPACE AT 1435 N. DUTTON. TENANT IMPROVEMENTS AS PART OF LEASING THE ADJACENT SPACE INCLUDE:	
<ol style="list-style-type: none"> RELOCATION OF (E) MANUFACTURING EQUIPMENT FROM (E) FACILITY TO PROPOSED TENANT SPACE REMOVAL OF (E) DOOR AND WIDENING OPENING BETWEEN TENANT SPACES TO CREATE ACCESS BETWEEN SPACES PATH OF TRAVEL ACCESSIBILITY IMPROVEMENTS INCLUDING: <ol style="list-style-type: none"> PROVIDING A (N) CURB RAMP AND ACCESSIBLE PARKING SPACE AND PARKING SIGNS MODIFYING ENTRANCE DOOR HARDWARE MODIFYING INTERIOR DOOR TO PROVIDE ACCESSIBLE ROUTE TO THE AREA OF ALTERATION 	



PROJECT INFORMATION	
PROJECT LOCATION:	1425-1435 N. DUTTON AVE. SANTA ROSA, CA, 95401
ASSESSOR'S PARCEL NO'S:	036-253-001
ZONING:	BP-SA: BUSINESS PARK, NORTH STATION AREA COMBINING DISTRICT
CONSTRUCTION:	VB, 1 STORY STRUCTURE (E) SPRINKLER TO REMAIN
EXISTING OCCUPANCY:	F-1: MANUFACTURING
PROPOSED OCCUPANCY:	F-1: MANUFACTURING
PROJECT DESCRIPTION:	TENANT IMPROVEMENT
SITE AREA:	70,131 S.F.
EXISTING STRUCTURE AREA:	7,204 S.F. 1425 N. DUTTON 4,997 S.F. 1435 N. DUTTON
PROPOSED STRUCTURE AREA:	7,204 S.F. 1425 N. DUTTON 4,997 S.F. 1435 N. DUTTON
PARKING:	RECIPROCATED PARKING FOR BUSINESS PARK. ONE (N) ACCESSIBLE PARKING SPACE PROPOSED FOR TENANT



01 REFERENCE SITE PLAN
SCALE: 1" = 40'-0"

GENERAL NOTES	
1. THE GENERAL CONDITIONS OF THE CONTRACT FOR CONSTRUCTION AND SPECIFICATIONS THAT MAY SUPPLEMENT THESE DRAWINGS ARE A PART OF THE CONTRACT DOCUMENT.	6. CONTRACTOR SHALL COORDINATE THE WORK OF THE VARIOUS TRADES AND SUBCONTRACTORS AND SHALL BE RESPONSIBLE FOR ANY ACTS, OMISSIONS OR ERRORS OF THE SUBCONTRACTORS AND OF PERSONS EMPLOYED BY THEM.
2. ALL WORK SHALL BE IN COMPLIANCE WITH ALL APPLICABLE LOCAL BUILDING CODES AND REGULATIONS. CONTRACTOR SHALL BE RESPONSIBLE FOR PERMITS APPLICABLE TO SPECIFIC TRADES OR SUBCONTRACTORS WORK.	7. CONTRACTOR TO VERIFY ALL EXISTING AND PROPOSED WRITTEN DIMENSIONS ON PLAN. DO NOT SCALE DRAWINGS. CONTRACTOR SHALL VERIFY AND BE MADE RESPONSIBLE FOR ALL DIMENSIONS AND CONDITIONS ON THE JOB. OWNER MUST BE NOTIFIED IN WRITING OF ANY PROPOSED OR REQUIRED VARIATIONS FROM THE DIMENSIONS AND CONDITIONS SHOWN, AND A WRITTEN CHANGE ORDER ISSUED BEFORE MAKING ANY CHANGES AT THE JOB SITE.
3. CONTRACTOR SHALL EXAMINE THE PREMISES AND SITE SO AS TO COMPARE THEM WITH THE DRAWINGS. ANY CONFLICTS OR DISCREPANCIES BETWEEN THE DRAWINGS AND FIELD CONDITIONS SHALL BE BROUGHT TO THE OWNERS ATTENTION PRIOR TO COMMENCING WORK.	8. ALL CONSTRUCTION MATERIALS AND SUPPLIES TO BE STORED, HANDLED AND INSTALLED ACCORDING TO MANUFACTURERS' RECOMMENDATIONS.
4. BY ACCEPTING AND USING THESE DRAWINGS, CONTRACTOR AGREES THAT HE SHALL ASSUME SOLE AND COMPLETE RESPONSIBILITY FOR JOB SITE CONDITIONS DURING THE COURSE OF CONSTRUCTION OF THIS PROJECT, INCLUDING SAFETY OF ALL PERSONS AND PROPERTY, NOT LIMITED TO NORMAL WORKING HOURS.	9. DRAWINGS INDICATE (N) NEW CONSTRUCTION UNLESS NOTED AS (E) EXISTING. BASED ON EXPERIENCE, THE CONTRACTOR SHOULD ANTICIPATE A REASONABLE NUMBER OF ADJUSTMENTS AND REPAIR TO EXISTING CONDITIONS, TO FULLY MEET THE DESIGN OBJECTIVES.
5. CONTRACTOR ACKNOWLEDGES THOROUGH FAMILIARIZATION WITH THE BUILDING SITE CONDITIONS, WITH THE DRAWINGS, AND FULL SCOPE OF WORK, WHICH MAY AFFECT THE OPERATIONS AND COMPLETION OF THE WORK, AND ASSUMES ALL RISK THEREFROM.	10. WHEN SPECIFIC FEATURES OF CONSTRUCTION ARE NOT FULLY SHOWN ON THE DRAWINGS, OR CALLED FOR IN THE GENERAL NOTES, THEIR CONSTRUCTION SHALL MATCH SIMILAR OR EXISTING CONDITIONS, OR AS REQUIRED BY APPLICABLE LOCAL CODE.

LEGEND	
	TENANT SPACE
	EXISTING LANDSCAPE
	ACCESSIBLE ROUTE
	APPROXIMATE PROPERTY BOUNDARY

CODE SUMMARY	
2019 CALIFORNIA BUILDING CODE 2019 CALIFORNIA ELECTRICAL CODE 2019 CALIFORNIA MECHANICAL CODE 2019 CALIFORNIA PLUMBING CODE 2019 CALIFORNIA ENERGY CODE	
CITY OF SANTA ROSA MUNICIPAL CODES AND ALL OTHER APPLICABLE STATE AND LOCAL ORDINANCES AND REGULATIONS.	

PATH OF TRAVEL (11B-202.4 EXCEPTION 8)	
WHEN THE ADJUSTED CONSTRUCTION COST, AS DEFINED, IS LESS THAN OR EQUAL TO THE CURRENT VALUATION THRESHOLD, AS DEFINED, THE COST OF COMPLIANCE WITH SECTION 11B-202.4 SHALL BE LIMITED TO 20 PERCENT OF THE ADJUSTED CONSTRUCTION COST OF ALTERATIONS, STRUCTURAL REPAIRS OR ADDITIONS. WHEN THE COST OF FULL COMPLIANCE WITH SECTION 11B-202.4 WOULD EXCEED 20 PERCENT, COMPLIANCE SHALL BE PROVIDED TO THE GREATEST EXTENT POSSIBLE WITHOUT EXCEEDING 20 PERCENT.	
IN CHOOSING WHICH ACCESSIBLE ELEMENTS TO PROVIDE, PRIORITY SHOULD BE GIVEN TO THOSE ELEMENTS THAT WILL PROVIDE THE GREATEST ACCESS IN THE FOLLOWING ORDER:	
<ol style="list-style-type: none"> AN ACCESSIBLE ENTRANCE: REPLACE (E) CURB RAMP AT PROPOSED ACCESSIBLE PARKING LOCATION. ENTRANCE DOOR HARDWARE TO BE REPLACED. ADJUST DOOR CLOSER TO PROVIDE 5 LBS MAX FORCE TO OPEN AND 5 SECOND MIN CLOSING SPEED AN ACCESSIBLE ROUTE TO THE ALTERED AREA; MODIFY DOOR SWING LEADING TO TENANT IMPROVEMENT AREA TO PROVIDE AN ACCESSIBLE ROUTE TO THE ALTERED AREA AT LEAST ONE ACCESSIBLE RESTROOM FOR EACH SEX OR ONE ACCESSIBLE UNISEX (SINGLE-USER OR FAMILY) RESTROOM; EXISTING RESTROOMS TO REMAIN. PROVIDING COMPLIANT ACCESSIBLE RESTROOMS IS NOT FEASIBLE WITHIN THE 20% PATH OF TRAVEL SPEND ACCESSIBLE TELEPHONES; N/A ACCESSIBLE DRINKING FOUNTAINS; AND N/A WHEN POSSIBLE, ADDITIONAL ACCESSIBLE ELEMENTS SUCH AS PARKING, SIGNS, STORAGE AND ALARMS. A NEW ACCESSIBLE PARKING SPACE SERVING THE TENANT SPACE IS PROPOSED. NEW ACCESSIBLE PARKING SIGNS ARE PROPOSED. ISA ENTRANCE SIGN, AND TACTILE EXIT SIGNS ARE PROPOSED 	

CONTACT	
OWNER'S REPRESENTATIVE: 1355 N. DUTTON AVE SANTA ROSA, CA 95401 CONTACT: ZACK PARKER TEL: 707.974.1967 EMAIL: BUILDERS@KEEGANCOPPIN.COM	
ELECTRICAL: O'ROURKE ELECTRIC, INC. 3347 INDUSTRIAL DRIVE #4, SANTA ROSA, CA 95403 CONTACT: DAN O'ROURKE TEL: (707)528-8539 EMAIL: DAN@OROURKEELECTRIC.COM	
DRAWN BY: GATHER MANAGEMENT, LLC. 4405 BROOKSHIRE CIRCLE SANTA ROSA, CA 95405 CONTACT: ERNEST WUETHRICH TEL: 707.494.8857 EMAIL: ERNEST@WEAREGATHER.COM	

DRAWN BY: ERNEST@WEAREGATHER.COM 707.494.8857

4405 BROOKSHIRE CIRCLE, SANTA ROSA, CA 95405
GATHER
MANAGEMENT, LLC

LICENSED ARCHITECT
ARIANE K. SANDERS
No. C-32796
5/31/23
RENEWAL DATE 11/30/24
STATE OF CALIFORNIA

DRAWING ISSUANCE
06/28/2022 ISSUED FOR PERMIT

TENANT IMPROVEMENT
1425-1435 N. DUTTON AVE.
SANTA ROSA, CA 95401

SHEET TITLE
COVER SHEET

SHEET NUMBER
CVR

LEGEND

- (E) LANDSCAPE
- (N) ASPHALT PAVING. SEE DETAIL 05/SD1
- (N) WALKWAY CONCRETE PAVING. SEE DETAIL 03/SD1

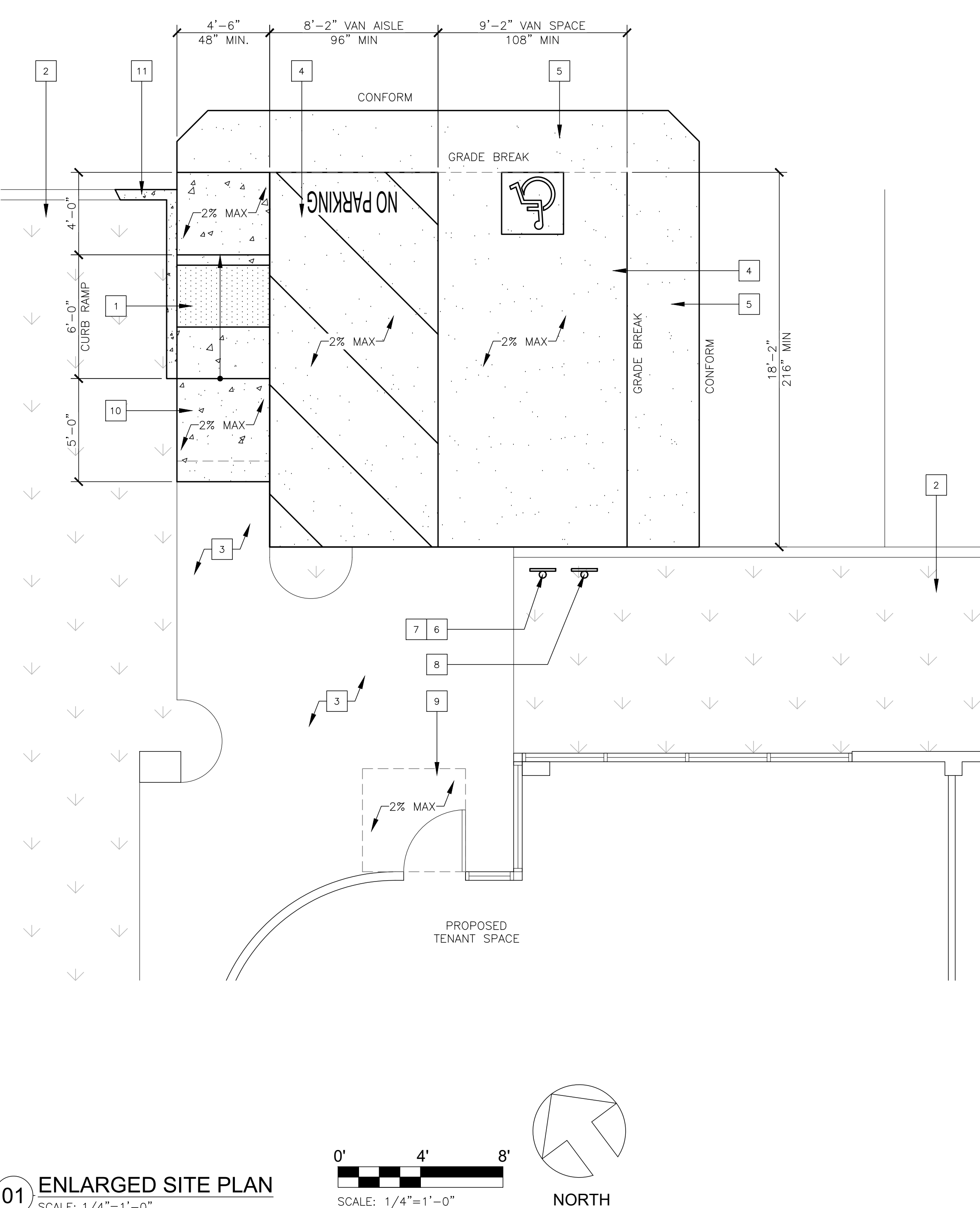
KEYNOTES

- (N) PERPENDICULAR CURB RAMP SLOPED AT 8.33% MAX RUNNING SLOPE, WITH 2% MAX CROSS SLOPE. PROVIDE (N) DETECTABLE WARNING SURFACE. SEE DETAILS 08/SD1 AND 09/SD1
- (E) LANDSCAPE TO REMAIN
- (E) CONCRETE WALK TO REMAIN
- (N) ASPHALT PAVING AT ACCESSIBLE PARKING SPACE AND AISLE. STRIPE PER DETAIL 05/SD1. PROVIDE 2% MAX SLOPE IN ALL DIRECTIONS WITHIN ACCESSIBLE PARKING SPACE AND AISLE.
- (N) ASPHALT PAVING TO CONFORM (N) ACCESSIBLE PARKING SPACE AND AISLE TO EXISTING PARKING LOT GRADE
- (N) POLE MOUNTED ACCESSIBLE PARKING SIGN WITH \$250 FINE SIGN. SEE DETAIL 06/SD1
- (N) POLE MOUNTED 'VAN ACCESSIBLE' PARKING SIGN. SEE DETAIL 06/SD1
- (N) POLE MOUNTED UNAUTHORIZED VEHICLE PARKING SIGN. SEE DETAIL 06/SD1
- (E) DOOR MANEUVERING CLEARANCE SLOPED AT 2% MAX IN ALL DIRECTIONS
- (N) TOP LANDING OF CURB RAMP SLOPED AT 2% MAX IN ALL DIRECTIONS
- REALIGN CONCRETE CURB AND REFRESH LANDSCAPE AS REQUIRED AT (N) CURB RAMP

PATH OF TRAVEL NOTE

PER 11B-202.4 EXCEPTION 8, WHEN THE ADJUSTED CONSTRUCTION COST, AS DEFINED, IS LESS THAN OR EQUAL TO THE CURRENT VALUATION THRESHOLD, AS DEFINED, THE COST OF COMPLIANCE WITH SECTION 11B-202.4 SHALL BE LIMITED TO 20 PERCENT OF THE ADJUSTED CONSTRUCTION COST OF ALTERATIONS, STRUCTURAL REPAIRS OR ADDITIONS. WHEN THE COST OF FULL COMPLIANCE WITH SECTION 11B-202.4 WOULD EXCEED 20 PERCENT, COMPLIANCE SHALL BE PROVIDED TO THE GREATEST EXTENT POSSIBLE WITHOUT EXCEEDING 20 PERCENT.

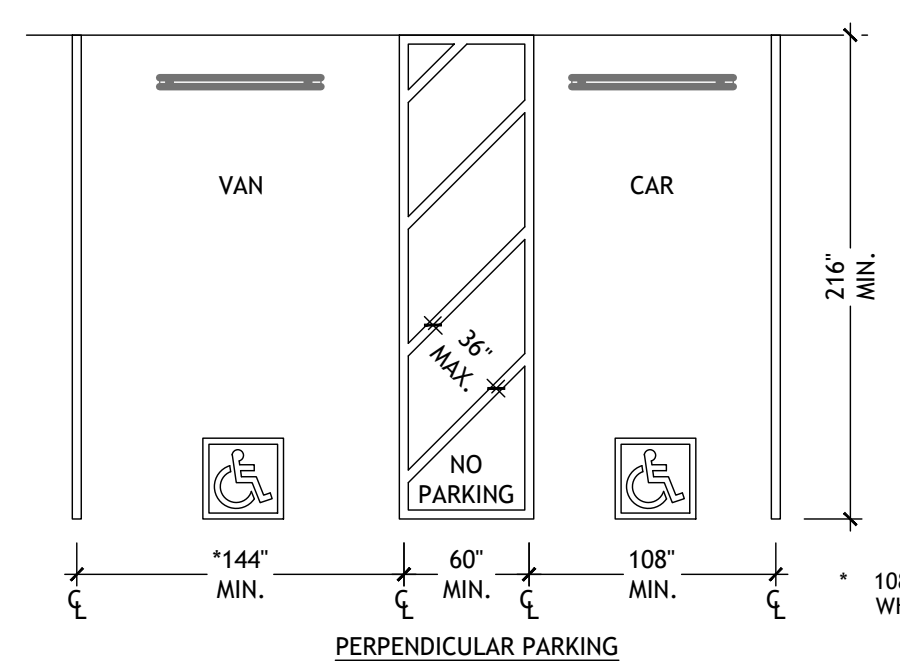
SITE PATH OF TRAVEL IS LIMITED TO PROVIDING AN ACCESSIBLE PARKING SPACE TO SERVE THE PROPOSED TENANT SPACE, ALONG WITH ASSOCIATED SIGNAGE. A CURB RAMP IS PROPOSED TO PROVIDE AN ACCESSIBLE ROUTE FROM THE (N) PARKING TO THE ENTRANCE. ADDITIONAL ARCHITECTURAL BARRIERS MAY EXIST ON-SITE, HOWEVER CANNOT BE ADDRESSED WITHIN THE 20% PATH OF TRAVEL SPEND



ACCESSIBLE PARKING SPACE NOTES:

- CAR AND VAN PARKING SPACES SHALL BE 216 INCHES LONG MINIMUM. CAR PARKING SPACES SHALL BE 108 INCHES WIDE MINIMUM AND VAN PARKING SPACES SHALL BE 144 INCHES WIDE MINIMUM. SHALL BE MARKED TO DEFINE THE WIDTH, AND SHALL HAVE AN ADJACENT ACCESS AISLE COMPLYING WITH SECTION 11B-502.3. VAN PARKING SPACES SHALL BE PERMITTED TO BE 108 INCHES WIDE MINIMUM WHERE THE ACCESS AISLE IS 96 INCHES WIDE MINIMUM.
- ACCESS AISLES SHALL ADJOIN AN ACCESSIBLE ROUTE. TWO PARKING SPACES OR ONE PARKING SPACE AND ONE ELECTRIC VEHICLE CHARGING SPACE SHALL BE PERMITTED TO SHARE A COMMON ACCESS AISLE.
- ACCESS AISLES SERVING CAR AND VAN PARKING SPACES SHALL BE 60 INCHES WIDE MINIMUM.
- ACCESS AISLES SHALL EXTEND THE FULL REQUIRED LENGTH OF THE PARKING SPACES THEY SERVE.
- ACCESS AISLES SHALL BE MARKED WITH A BLUE PAINTED BORDERLINE AROUND THEIR PERIMETER. THE AREA WITHIN THE BLUE BORDERLINES SHALL BE MARKED WITH HATCHED LINES A MAXIMUM OF 36 INCHES ON CENTER IN A COLOR CONTRASTING WITH THAT OF THE AISLE SURFACE, PREFERABLY BLUE OR WHITE. THE WORDS "NO PARKING" SHALL BE PAINTED ON THE SURFACE WITHIN EACH ACCESS AISLE IN WHITE LETTERS A MINIMUM OF 12 INCHES IN HEIGHT AND LOCATED TO BE VISIBLE FROM THE ADJACENT VEHICULAR WAY. ACCESS AISLE MARKINGS MAY EXTEND BEYOND THE MINIMUM REQUIRED LENGTH.
- ACCESS AISLES SHALL NOT OVERLAP THE VEHICULAR WAY. ACCESS AISLES SHALL BE PERMITTED TO BE PLACED ON EITHER SIDE OF THE PARKING SPACE EXCEPT FOR VAN PARKING SPACES WHICH SHALL HAVE ACCESS AISLES LOCATED ON THE PASSENGER SIDE OF THE PARKING SPACES.
- ACCESS AISLES SHALL BE AT THE SAME LEVEL AS THE PARKING SPACES THEY SERVE. CHANGES IN LEVEL, SLOPES EXCEEDING 1:48, AND DETECTABLE WARNINGS SHALL NOT BE PERMITTED.
- PARKING SPACES, ACCESS AISLES AND VEHICULAR ROUTES SERVING THEM SHALL PROVIDE A VERTICAL CLEARANCE OF 98 INCHES MINIMUM.
- THE PARKING SPACE SHALL BE MARKED WITH AN INTERNATIONAL SYMBOL OF ACCESSIBILITY IN WHITE ON A BLUE BACKGROUND A MINIMUM 36 INCHES WIDE BY 36 INCHES HIGH. THE CENTERLINE OF THE INTERNATIONAL SYMBOL OF ACCESSIBILITY SHALL BE A MAXIMUM OF 6 INCHES FROM THE CENTERLINE OF THE PARKING SPACE, ITS SIDES PARALLEL TO THE LENGTH OF THE PARKING SPACE AND ITS LOWER CORNER AT OR LOWER SIDE ALIGNED WITH THE END OF THE PARKING SPACE LENGTH.
- PARKING SPACES LOCATED ON THE PASSENGER SIDE OF CARS AND VANS, WHEN PARKED, CANNOT OBSTRUCT THE REQUIRED CLEAR WIDTH OF ADJACENT ACCESSIBLE ROUTES.
- PARKING SPACES AND ACCESS AISLES SHALL BE DESIGNED SO THAT PERSONS USING THEM ARE NOT REQUIRED TO TRAVEL BEHIND PARKING SPACES OTHER THAN TO PASS BEHIND THE PARKING SPACE IN WHICH THEY PARKED.
- A CURB OR WHEEL STOP SHALL BE PROVIDED IF REQUIRED TO PREVENT ENCRoACHMENT OF VEHICLES OVER THE REQUIRED CLEAR WIDTH OF ADJACENT ACCESSIBLE ROUTES.

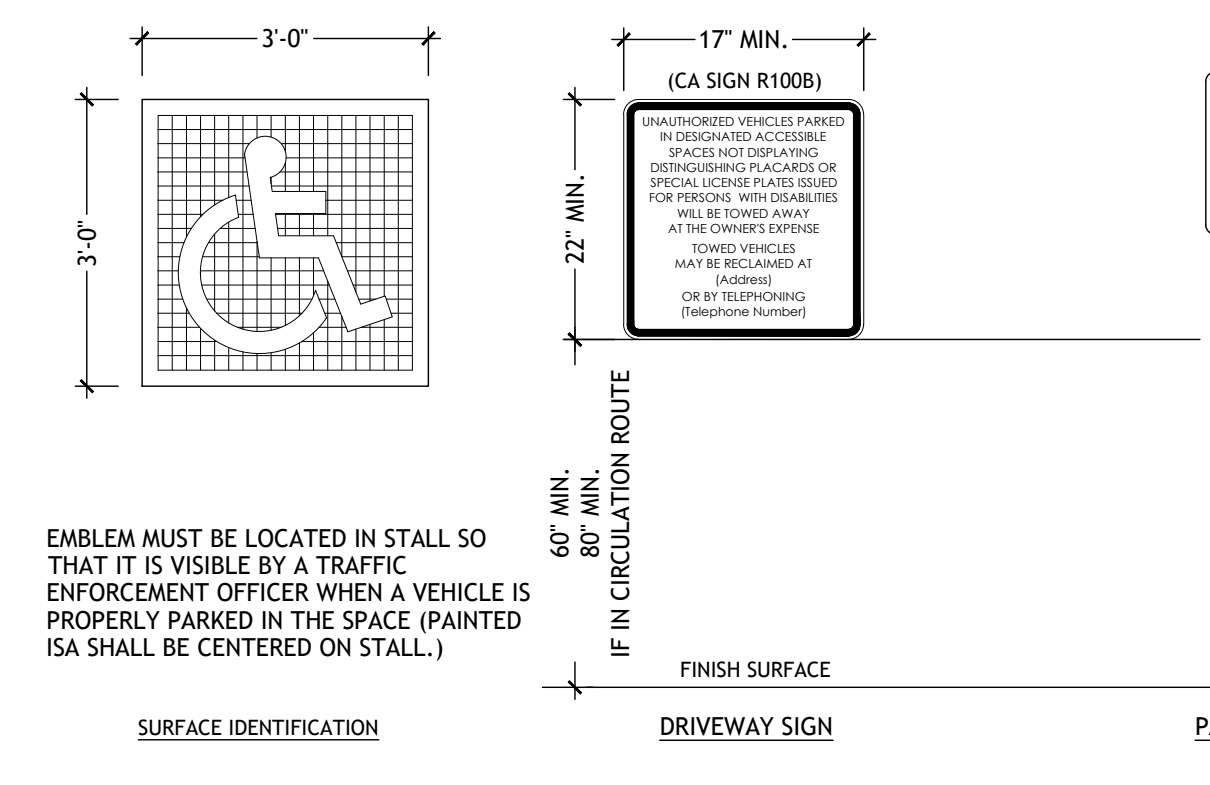
07 ACCESSIBLE PARKING SPACE
 SCALE: -



SIGNAGE AND IDENTIFICATION OF SPACE NOTES:

- PARKING SPACE IDENTIFICATION SIGNS SHALL INCLUDE THE INTERNATIONAL SYMBOL OF ACCESSIBILITY COMPLYING WITH SECTION (11B-703.7.2.1) INTERNATIONAL SYMBOL OF ACCESSIBILITY.
- SIGNS IDENTIFYING VAN PARKING SPACES SHALL CONTAIN ADDITIONAL LANGUAGE OR AN ADDITIONAL SIGN WITH THE DESIGNATION "VAN ACCESSIBLE."
- SIGNS SHALL BE 60 INCHES MINIMUM ABOVE THE FINISH FLOOR OR GROUND SURFACE MEASURED TO THE BOTTOM OF THE SIGN. SIGNS LOCATED WITHIN AN ACCESSIBLE ROUTE SHALL BE A MINIMUM OF 80 INCHES ABOVE THE FINISH FLOOR OR GROUND SURFACE MEASURED TO THE BOTTOM OF THE SIGN.
- PARKING IDENTIFICATION SIGNS SHALL BE REFLECTORIZED WITH A MINIMUM AREA OF 70 SQUARE INCHES.
- ADDITIONAL LANGUAGE OR AN ADDITIONAL SIGN BELOW THE INTERNATIONAL SYMBOL OF ACCESSIBILITY SHALL STATE "MINIMUM FINE \$250."
- A PARKING SPACE IDENTIFICATION SIGN SHALL BE VISIBLE FROM EACH PARKING SPACE. SIGNS SHALL BE PERMANENTLY POSTED EITHER IMMEDIATELY ADJACENT TO THE PARKING SPACE OR WITHIN THE PROJECTED PARKING SPACE WIDTH AT THE HEAD END OF THE PARKING SPACE. SIGNS MAY ALSO BE PERMANENTLY POSTED ON A WALL AT THE INTERIOR END OF THE PARKING SPACE.
- AN ADDITIONAL SIGN SHALL BE POSTED EITHER: 1) IN A CONSPICUOUS PLACE AT EACH ENTRANCE TO AN OFF-STREET PARKING FACILITY OR 2) IMMEDIATELY ADJACENT TO ON-SITE ACCESSIBLE PARKING AND VISIBLE FROM EACH PARKING SPACE. THE ADDITIONAL SIGN SHALL CLEARLY STATE IN LETTERS WITH A MINIMUM HEIGHT OF 1 INCH THE FOLLOWING:
 "UNAUTHORIZED VEHICLES, PARKED IN DESIGNATED ACCESSIBLE SPACES NOT DISPLAYING DISTINGUISHING PLACARDS OR SPECIAL LICENSE PLATES ISSUED FOR PERSONS WITH DISABILITIES WILL BE TOWED AWAY AT THE OWNER'S EXPENSE. TOWED VEHICLES MAY BE RECLAIMED AT: _____ OR BY TELEPHONING _____"
- BLANK SPACES SHALL BE FILLED IN WITH APPROPRIATE INFORMATION AS A PERMANENT PART OF THE SIGN. (TOWING COMPANY'S NAME AND TELEPHONE NUMBER, MUST BE PROVIDED ON SIGN)

06 ACCESSIBLE PARKING SIGNS
 SCALE: -



ASPHALT AT PARKING

SCALE: 1"=1'-0"

WALKWAY PER DETAIL 03/SD1
 CONCRETE CURB
 (N) ASPHALT PAVING. SEE DETAIL 07/SD1
 #4 CONT. TOP AND BOTTOM
 CLASS II AGGREGATE BASE

WALKWAY DETAIL

SCALE: 1"=1'-0"

#4 @ 18" O.C. EACH WAY OR 6X6X10 W/M AT SLAB MID DEPTH
 2" THICK SAND LAYER

CURB AT LANDSCAPE

SCALE: 1"=1'-0"

WALKWAY PER DETAIL 03/SD1
 (E) LANDSCAPE
 CONCRETE CURB
 2" THICK SAND OR 1/2" DRAIN ROCK
 #4 CONT. TOP AND BOTTOM

02 CURB AT LANDSCAPE
 SCALE: 1"=1'-0"

03 WALKWAY DETAIL
 SCALE: 1"=1'-0"

CURB RAMP NOTES:

- RAMP RUNS SHALL HAVE A RUNNING SLOPE NOT STEEPER THAN 1:12. WHERE PROVIDED, CURB RAMP FLARES SHALL NOT BE STEEPER THAN 1:10.
- CURB RAMP AND THE FLARED SIDES OF CURB RAMP SHALL BE LOCATED SO THAT THEY DO NOT PROJECT INTO VEHICULAR TRAFFIC LANES, PARKING SPACES, OR PARKING ACCESS AISLES. CURB RAMP AT MARKED CROSSINGS SHALL BE WHOLLY CONTAINED WITHIN THE MARKINGS, EXCLUDING ANY FLARED SIDES.
- THE CLEAR WIDTH OF CURB RAMP RUNS (EXCLUDING ANY FLARED SIDES), BLENDED TRANSITIONS, AND TURNING SPACES SHALL BE 48 INCHES MINIMUM.
- LANDINGS SHALL BE PROVIDED AT THE TOPS OF CURB RAMP AND BLENDED TRANSITIONS. THE LANDING CLEAR LENGTH SHALL BE 48 INCHES MINIMUM. THE LANDING CLEAR WIDTH SHALL BE AT LEAST AS WIDE AS THE CURB RAMP, EXCLUDING ANY FLARED SIDES, OR THE BLENDED TRANSITION LEADING TO THE LANDING. THE SLOPE OF THE LANDING IN ALL DIRECTIONS SHALL BE 1:48 MAXIMUM. (PARALLEL CURB RAMP SHALL NOT BE REQUIRED TO COMPLY)
- AT PARALLEL CURB RAMP, A TURNING SPACE 48 INCHES MINIMUM BY 48 INCHES MINIMUM SHALL BE PROVIDED AT THE BOTTOM OF THE CURB RAMP. THE SLOPE OF THE TURNING SPACE IN ALL DIRECTIONS SHALL BE 1:48 MAXIMUM.
- THE CROSS SLOPE OF CURB RAMP AND BLENDED TRANSITIONS SHALL BE 1:48 MAXIMUM.
- COUNTER SLOPES OF ADJOINING GUTTERS, BLENDED TRANSITIONS AND ROAD SURFACES IMMEDIATELY ADJACENT TO AND WITHIN 24 INCHES OF THE CURB RAMP SHALL NOT BE STEEPER THAN 1:20. THE ADJACENT SURFACES AT TRANSITIONS AT CURB RAMP TO WALKS, GUTTERS, AND STREETS SHALL BE AT THE SAME LEVEL.
- CURB RAMP AND BLENDED TRANSITIONS SHALL HAVE DETECTABLE WARNINGS COMPLYING WITH SECTION 11B-705
- FOR PARALLEL CURB RAMP, WHERE THE TURNING SPACE HAS ONE ENTRANCE/EXIT POINT OTHER THAN THE SLOPED RAMP SEGMENTS, DETECTABLE WARNINGS SHALL BE 36 INCHES DEEP, AS MEASURED PERPENDICULAR TO THE CURB, AND THE TURNING SPACE SHALL PROVIDE MINIMUM 36 INCHES WIDE PORTION WITHOUT DETECTABLE WARNINGS TO ALLOW PEDESTRIAN TRAVEL IN THE DIRECTION OF THE SIDEWALK WITHOUT TRAVELING OVER THE DETECTABLE WARNINGS.
- DETECTABLE WARNINGS AT PERPENDICULAR CURB RAMP SHALL EXTEND 36 INCHES IN THE DIRECTION OF TRAVEL. DETECTABLE WARNINGS SHALL EXTEND THE FULL WIDTH OF THE RAMP RUN LESS 2 INCHES MAXIMUM ON EACH SIDE, EXCLUDING ANY FLARED SIDES.

CURB RAMP NOTES:

- RAMP RUNS SHALL HAVE A RUNNING SLOPE NOT STEEPER THAN 1:12. WHERE PROVIDED, CURB RAMP FLARES SHALL NOT BE STEEPER THAN 1:10.
- CURB RAMP AND THE FLARED SIDES OF CURB RAMP SHALL BE LOCATED SO THAT THEY DO NOT PROJECT INTO VEHICULAR TRAFFIC LANES, PARKING SPACES, OR PARKING ACCESS AISLES. CURB RAMP AT MARKED CROSSINGS SHALL BE WHOLLY CONTAINED WITHIN THE MARKINGS, EXCLUDING ANY FLARED SIDES.
- THE CLEAR WIDTH OF CURB RAMP RUNS (EXCLUDING ANY FLARED SIDES), BLENDED TRANSITIONS, AND TURNING SPACES SHALL BE 48 INCHES MINIMUM.
- LANDINGS SHALL BE PROVIDED AT THE TOPS OF CURB RAMP AND BLENDED TRANSITIONS. THE LANDING CLEAR LENGTH SHALL BE 48 INCHES MINIMUM. THE LANDING CLEAR WIDTH SHALL BE AT LEAST AS WIDE AS THE CURB RAMP, EXCLUDING ANY FLARED SIDES, OR THE BLENDED TRANSITION LEADING TO THE LANDING. THE SLOPE OF THE LANDING IN ALL DIRECTIONS SHALL BE 1:48 MAXIMUM. (PARALLEL CURB RAMP SHALL NOT BE REQUIRED TO COMPLY)
- AT PARALLEL CURB RAMP, A TURNING SPACE 48 INCHES MINIMUM BY 48 INCHES MINIMUM SHALL BE PROVIDED AT THE BOTTOM OF THE CURB RAMP. THE SLOPE OF THE TURNING SPACE IN ALL DIRECTIONS SHALL BE 1:48 MAXIMUM.
- THE CROSS SLOPE OF CURB RAMP AND BLENDED TRANSITIONS SHALL BE 1:48 MAXIMUM.
- COUNTER SLOPES OF ADJOINING GUTTERS, BLENDED TRANSITIONS AND ROAD SURFACES IMMEDIATELY ADJACENT TO AND WITHIN 24 INCHES OF THE CURB RAMP SHALL NOT BE STEEPER THAN 1:20. THE ADJACENT SURFACES AT TRANSITIONS AT CURB RAMP TO WALKS, GUTTERS, AND STREETS SHALL BE AT THE SAME LEVEL.
- CURB RAMP AND BLENDED TRANSITIONS SHALL HAVE DETECTABLE WARNINGS COMPLYING WITH SECTION 11B-705
- FOR PARALLEL CURB RAMP, WHERE THE TURNING SPACE HAS ONE ENTRANCE/EXIT POINT OTHER THAN THE SLOPED RAMP SEGMENTS, DETECTABLE WARNINGS SHALL BE 36 INCHES DEEP, AS MEASURED PERPENDICULAR TO THE CURB, AND THE TURNING SPACE SHALL PROVIDE MINIMUM 36 INCHES WIDE PORTION WITHOUT DETECTABLE WARNINGS TO ALLOW PEDESTRIAN TRAVEL IN THE DIRECTION OF THE SIDEWALK WITHOUT TRAVELING OVER THE DETECTABLE WARNINGS.
- DETECTABLE WARNINGS AT PERPENDICULAR CURB RAMP SHALL EXTEND 36 INCHES IN THE DIRECTION OF TRAVEL. DETECTABLE WARNINGS SHALL EXTEND THE FULL WIDTH OF THE RAMP RUN LESS 2 INCHES MAXIMUM ON EACH SIDE, EXCLUDING ANY FLARED SIDES.

09 CURB RAMP NOTES
 SCALE: -

DETECTABLE WARNING SURFACE

SCALE: -

ENTIRE WIDTH OF RAMP OR WALKING SURFACE
 3'-0" IN DIRECTION OF TRAVEL
 2.3"-2.4" APART
 .65" MIN.
 0.2" HT.
 TAPERED EDGES WHERE EXPOSED
 SECTION A-A
 0.45"-0.47" AT TOP
 0.90"-0.92" AT BASE
 2.3"-2.4" APART

DETECTABLE WARNINGS NOTES:

- DETECTABLE WARNING SURFACES SHALL BE YELLOW AND APPROXIMATE FS 33538 OF SAE AMS-STD-595A.

08 DETECTABLE WARNING SURFACE
 SCALE: -

FIRE SEPARATION

- (E) EXTERIOR WALLS: (E) CONCRETE TILT-UP WALL
- (E) OCCUPANT SEPARATION: (E) 2X6 STUD PARTITION WALL BETWEEN TENANT SPACES
- TENANT SPACES ARE PROVIDED WITH (E) SPRINKLER SYSTEM

CODE ANALYSIS - 1425 N. DUTTON AVE.

OCCUPANCY: F-1 (EXISTING)
 CONSTRUCTION: VB, 1 STORY STRUCTURE, SPRINKLERED

ALLOWABLE FLOOR AREA:
 MIXED OCCUPANCY (CBC 508), SEPARATED (CBC 508.4)
 PER TABLE 506.2:
 F-1 ALLOWABLE AREA = 34,000 SF

7,204 SF (EXISTING) < 34,000 SF, COMPLIES

ALLOWABLE HEIGHT:
 PER TABLE 504.3
 F-1, VB-SPRINKLERED ALLOWABLE HEIGHT = 60 FT.

EXISTING BUILDING HEIGHT = ±20 FT < 60 FT, COMPLIES

NUMBER OF STORIES:
 PER TABLE 504.4
 F-1, SPRINKLERED, MAX. NUMBER OF STORIES = 2

EXISTING BUILDING IS 1 STORY, COMPLIES

SEPARATION:
 PER TABLE 508.4
 F-1 TO F-1 NO SEPARATION REQUIREMENT

EXISTING WALLS SEPARATING 1435 N. DUTTON FROM 1425 N. DUTTON = 2X6 STUD PARTITION, COMPLIES

CODE ANALYSIS - 1435 N. DUTTON AVE.

OCCUPANCY: F-1:MODERATE-HAZARD PLASTIC MANUFACTURING (PROPOSED)
 F-1:MODERATE-HAZARD SOAP MANUFACTURING (EXISTING)

CONSTRUCTION: VB, 1 STORY STRUCTURE, SPRINKLERED

ALLOWABLE FLOOR AREA:
 MIXED OCCUPANCY (CBC 508), SEPARATED (CBC 508.4)
 PER TABLE 506.2:
 F-1 ALLOWABLE AREA = 34,000 SF

4,997 SF (EXISTING) < 34,000 SF, COMPLIES

ALLOWABLE HEIGHT:
 PER TABLE 504.3
 F-1 VB-SPRINKLERED ALLOWABLE HEIGHT = 60 FT.

EXISTING BUILDING HEIGHT = ±20 FT < 60 FT, COMPLIES

NUMBER OF STORIES:
 PER TABLE 504.4
 F-1, SPRINKLERED, MAX. NUMBER OF STORIES = 2

EXISTING BUILDING IS 1 STORY, COMPLIES

SEPARATION:
 PER TABLE 508.4
 F-1 TO F-1 NO SEPARATION REQUIREMENT

EXISTING WALLS SEPARATING 1435 N. DUTTON FROM 1425 N. DUTTON = 2X6 STUD PARTITION, COMPLIES

EXITING REQUIREMENTS

1006.2.1 EXITS REQUIRED

TWO EXITS OR EXIT ACCESS DOORWAYS FROM ANY SPACE SHALL BE PROVIDED WHERE THE DESIGN OCCUPANT LOAD OR THE COMMON PATH OF EGRESS TRAVEL DISTANCE EXCEEDS THE VALUES LISTED IN TABLE 1006.2.1.

2 EXITS REQUIRED, 2 EXITS PROVIDED. EXIT COUNT COMPLIANT

1007.1.1 TWO EXIT SEPARATION DISTANCE

WHERE A BUILDING IS EQUIPPED THROUGHOUT WITH AN AUTOMATIC SPRINKLER SYSTEM IN ACCORDANCE WITH SECTION 903.3.1.1 OR 903.3.1.2, THE SEPARATION DISTANCE SHALL BE NOT LESS THAN ONE-THIRD OF THE LENGTH OF THE MAXIMUM OVERALL DIAGONAL DIMENSION OF THE AREA SERVED:

1/3 DISTANCE OF 177'-0" = 59'-0"

129'-0" > 59'-0". EXIT SEPARATION DISTANCE COMPLIANT

1005.3.2 OTHER EGRESS COMPONENTS

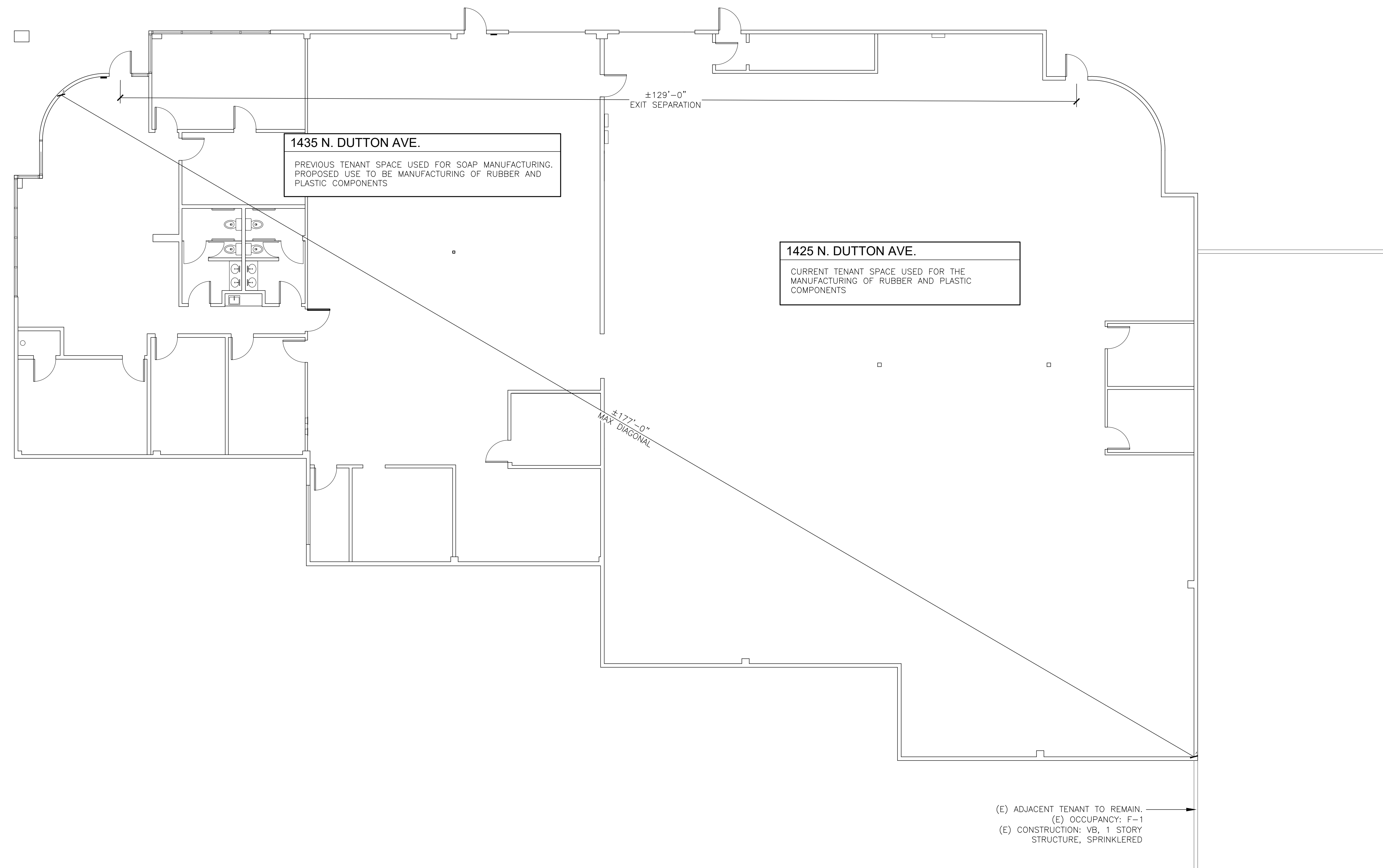
THE CAPACITY, IN INCHES, OF MEANS OF EGRESS COMPONENTS OTHER THAN STAIRWAYS SHALL BE CALCULATED BY MULTIPLYING THE OCCUPANT LOAD SERVED BY SUCH COMPONENT BY A MEANS OF EGRESS CAPACITY FACTOR OF 0.2 INCH (5.1 MM) PER OCCUPANT.

123 OCCUPANTS X 0.2 = 24.6"

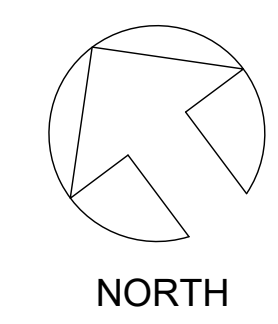
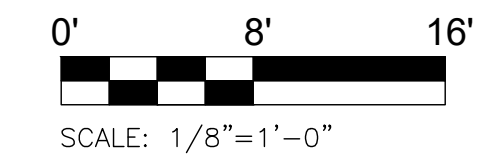
TWO 36" DOORS (34" CLR.) = 68" EGRESS DOORS PROVIDED. 68" > 24.6". EGRESS WIDTH COMPLIANT

OCCUPANCY CALCULATION

INDUSTRIAL AREA:	1/100 S.F.
7,204 S.F. / 100 =	73 OCCUPANTS
2,787 S.F. / 100 =	28 OCCUPANTS
ASSEMBLY W/OUT FIXED SEATS:	1/15 S.F.
158 S.F. / 15 =	11 OCCUPANTS
BUSINESS AREA:	1/150 S.F.
1,501 S.F. / 150 =	11 OCCUPANTS
TOTAL OCCUPANTS:	123 OCCUPANTS



01 EXISTING FLOOR PLAN
 SCALE: 1/8" = 1'-0"



DRAWING BY: ERNEST@NEARGATHER.COM 707.494.8857

DRAWING ISSUANCE

06/28/2022	ISSUED FOR PERMIT
------------	-------------------

TENANT IMPROVEMENT
 1425-1435 N. DUTTON AVE.
 SANTA ROSA, CA 95401

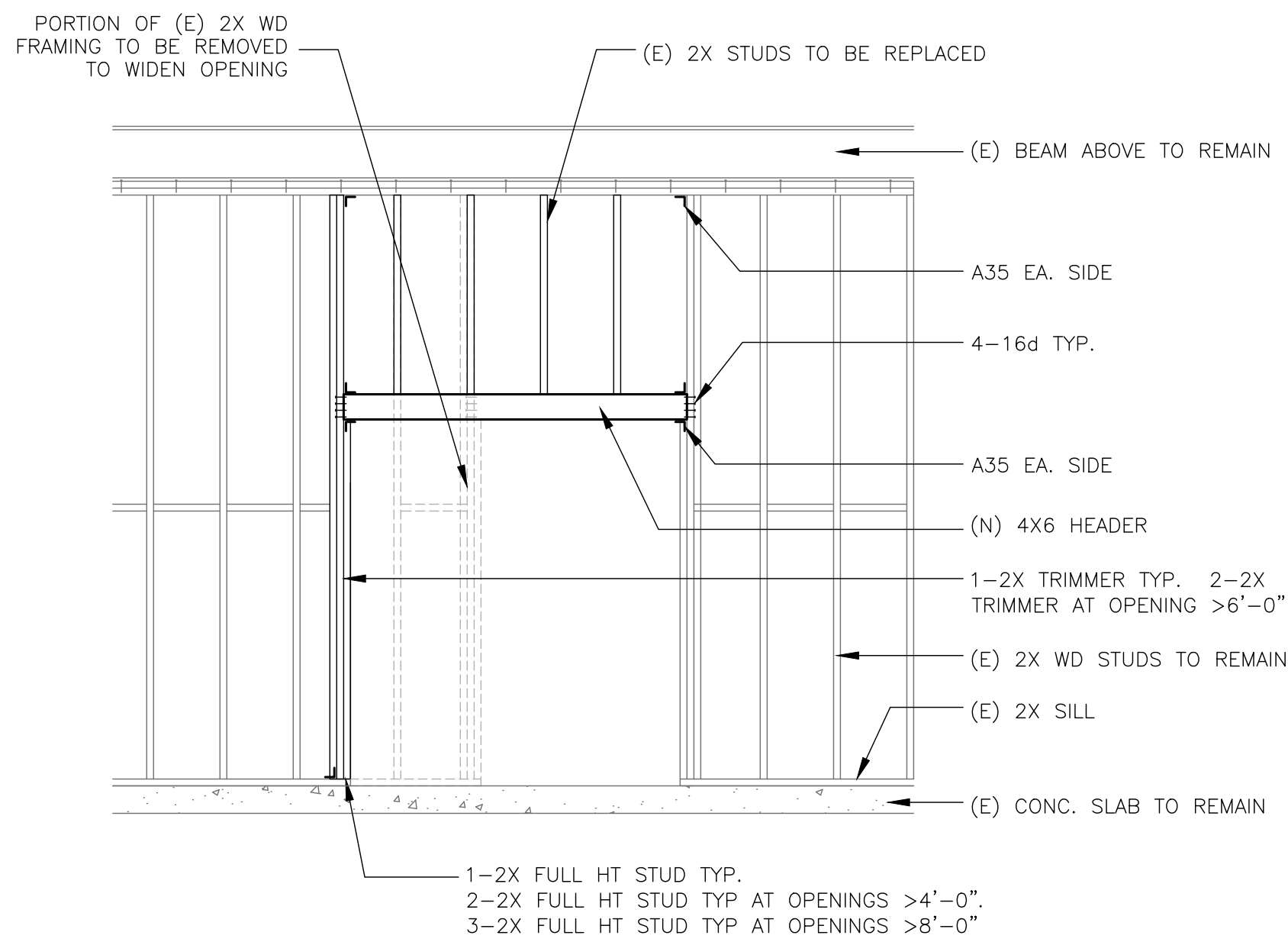
SHEET TITLE

CODE ANALYSIS

SHEET NUMBER

A0





02 TYPICAL STUD WALL AND OPENING FRAMING
SCALE: 3/8" = 1'-0"

PATH OF TRAVEL NOTE

PER 11B-202.4 EXCEPTION 8, WHEN THE ADJUSTED CONSTRUCTION COST, AS DEFINED, IS LESS THAN OR EQUAL TO THE CURRENT VALUATION THRESHOLD, AS DEFINED, THE COST OF COMPLIANCE WITH SECTION 11B-202.4 SHALL BE LIMITED TO 20 PERCENT OF THE ADJUSTED CONSTRUCTION COST OF ALTERATIONS, STRUCTURAL REPAIRS OR ADDITIONS. WHEN THE COST OF FULL COMPLIANCE WITH SECTION 11B-202.4 WOULD EXCEED 20 PERCENT, COMPLIANCE SHALL BE PROVIDED TO THE GREATEST EXTENT POSSIBLE WITHOUT EXCEEDING 20 PERCENT.

BUILDING PATH OF TRAVEL IS LIMITED TO PROVIDING AN ACCESSIBLE ENTRANCE AND ROUTE TO SERVE THE PROPOSED TENANT SPACE, ALONG WITH ASSOCIATED SIGNAGE, ADDITIONAL ARCHITECTURAL BARRIERS MAY EXIST, INCLUDING WITHIN THE BATHROOMS, HOWEVER CANNOT BE ADDRESSED WITHIN THE 20% PATH OF TRAVEL SPEND

LEGEND

	EXISTING WALL TO REMAIN
	ACCESSIBLE CLEAR SPACE/ACCESSIBLE ROUTE

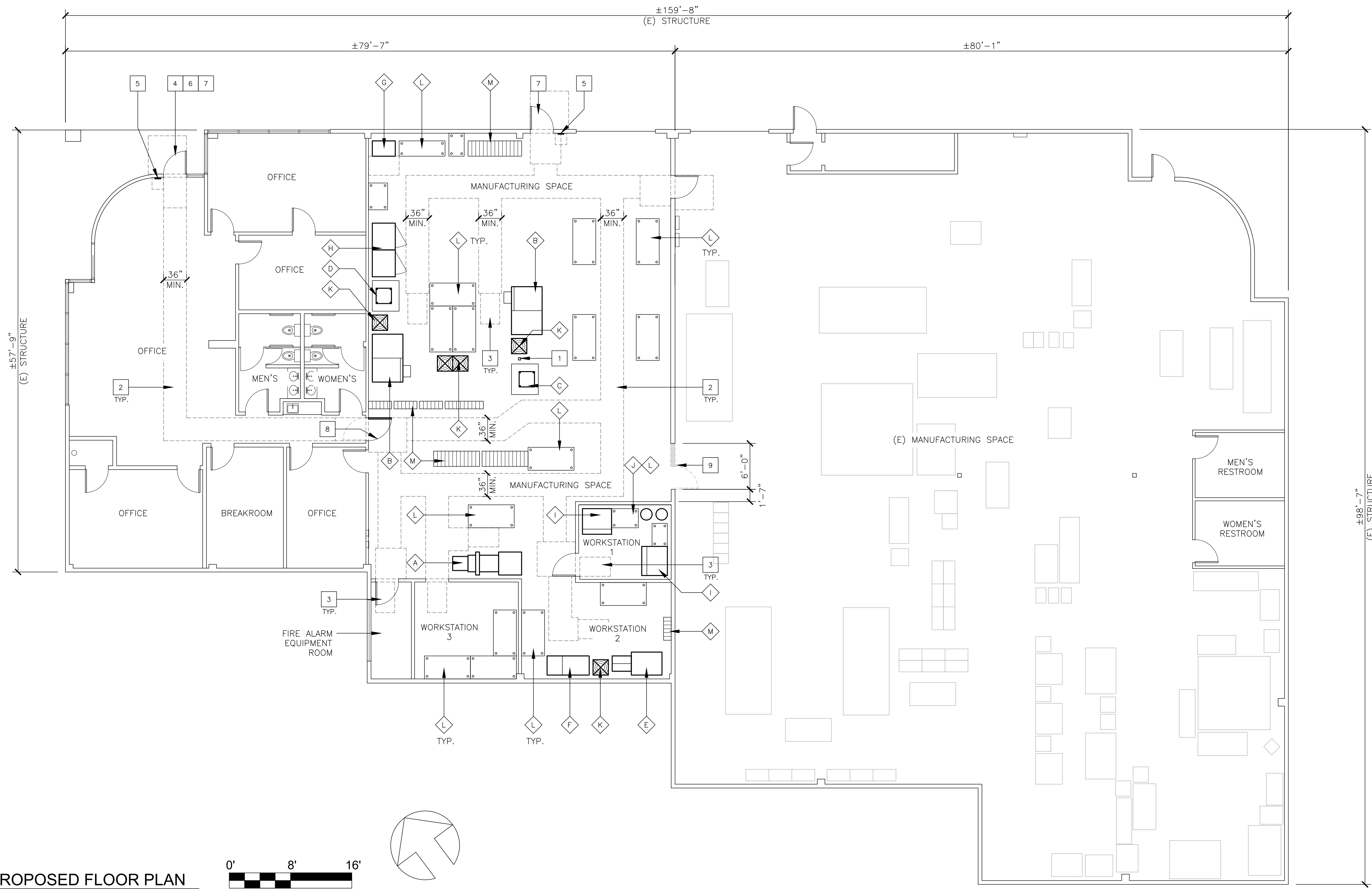
- KEYNOTES**
- (E) STRUCTURAL COLUMN TO BE PROTECTED IN PLACE DURING THE MOVING OF EQUIPMENT
 - 36" MIN. WIDE ACCESSIBLE ROUTE THROUGH PROPOSED TENANT SPACE
 - 30"x48" CLEAR SPACE ALLOWING AN ACCESSIBLE APPROACH, ENTRANCE AND EXIT INTO/FROM THE EMPLOYEE WORKSTATION AREA
 - (N) ISA ENTRANCE SIGN. SEE DETAIL 03/AS1
 - (N) TACTILE "EXIT" SIGN AT DISCHARGE DOOR. SEE DETAIL 06/AS1
 - (N) LOOP STYLE DOOR PULL HARDWARE. INSTALL (N) DOOR PULL AT 42" AFF, MEASURED TO CENTER OF DOOR HARDWARE
 - (E) SWINGING DOOR TO REMAIN. MAINTAIN ACCESSIBLE MANEUVERING CLEARANCES AS SHOWN. MODIFY DOOR CLOSERS TO PROVIDE 5 LBS MAX FORGE TO OPEN. WHERE DOORS ARE PROVIDED WITH CLOSERS, MODIFY DOOR CLOSERS TO ALLOW FOR 5 SECOND MIN CLOSING TIME
 - REVERSE DOOR SWING TO PROVIDE AN ACCESSIBLE DOOR MANEUVERING CLEARANCE. DOOR IS PROVIDED WITH A LATCH ONLY (NO CLOSER)
 - (E) DOOR TO BE REMOVED AND OPENING WIDENED AS SHOWN. (E) PARTITION IS A NON-BEARING 2X6 WALL CONSTRUCTED UNDER AN (E) BEAM. SEE DETAIL 02/A1

- NEW EQUIPMENT LIST**
- INSTALL FREE STANDING MANUFACTURING EQUIPMENT PER MANUFACTURER'S INSTRUCTIONS. REFER TO ELECTRICAL DRAWINGS FOR ADDITIONAL REQUIREMENTS.
- A RUBBER MILL:
RELIABLE, MODEL NO. SMCA-050
 - B RI20 & RI21 - RUBBER TRANSFER PRESS:
WABASH MPI, MODEL NO. VT50H-18-X
 - C RT9 - LABORATORY RUBBER PRESS:
CARVER, MODEL NO. 2699
 - D RT17 - LABORATORY RUBBER PRESS:
CARVER, MODEL NO. 2699
 - E P7 - RUBBER COMPRESSION MOLDING PRESS:
CARVER, MODEL NO. 4877.9PL0001
 - F P6 - RUBBER COMPRESSION MOLDING PRESS:
CARVER, MODEL NO. 3947.0DIOA01
 - G SOLID STATE PULSED LASER (AIR-COOLED):
EPILOGLASER, FIBERMARK 24
 - H LAB OVEN:
BLUE M, MODEL NO. LO SERIES MECHANICAL CONVECTION
 - I GRIT BLASTER/SAND BLASTER
ECONOLINE, MODEL NO. 48X36 RH VD
 - J BENCH TOP LATHE
JET, MODEL NO. JWJL-1015
 - K BOXED FAN FOR EQUIPMENT
 - L WORK STATION TABLE
 - M SHELVING TO BE SELECTED BY OWNER AND NOT TO EXCEED 5'-9" MAX HEIGHT. SHELVING USED TO STORE RUBBER, METAL AND PLASTIC PARTS

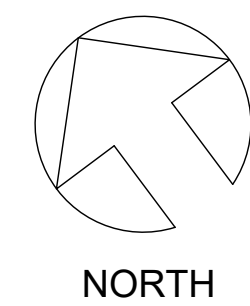
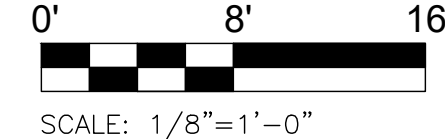
EQUIPMENT NOTE

ALL EQUIPMENT IS ALREADY OWNED BY THE OWNER, AND BEING MOVED TO THIS FACILITY AS AN EXPANSION OF THE (E) SPACE. ALL EQUIPMENT IS FREE STANDING/MOVABLE MANUFACTURING EQUIPMENT, WITHOUT ANCHORAGE REQUIRED TO THE SLAB.

SEE ELECTRICAL SHEETS FOR ELECTRICAL CONNECTIONS



01 PROPOSED FLOOR PLAN
SCALE: 1/8" = 1'-0"



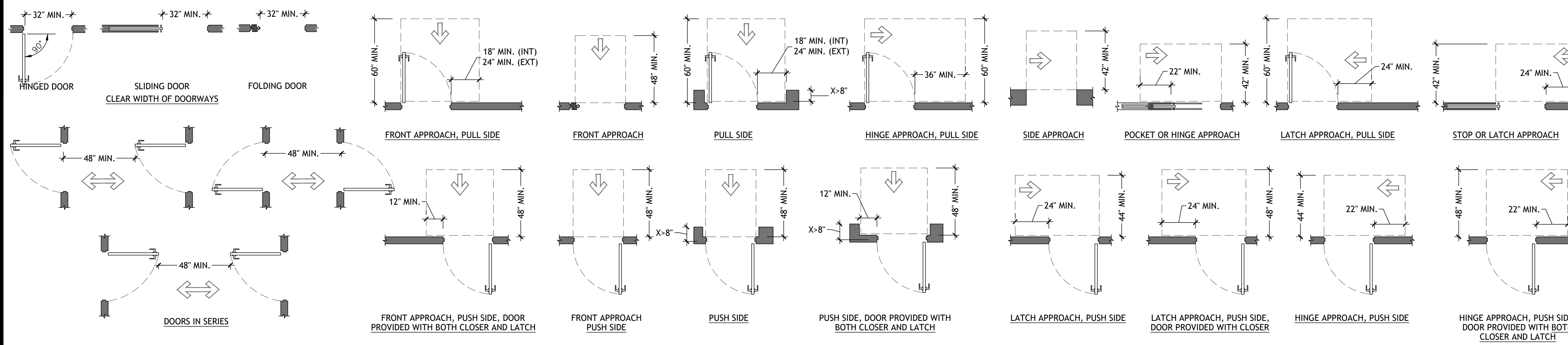
DRAWING ISSUANCE

06/28/2022	ISSUED FOR PERMIT
------------	-------------------

TENANT IMPROVEMENT
1425-1435 N. DUTTON AVE.
SANTA ROSA, CA 95401

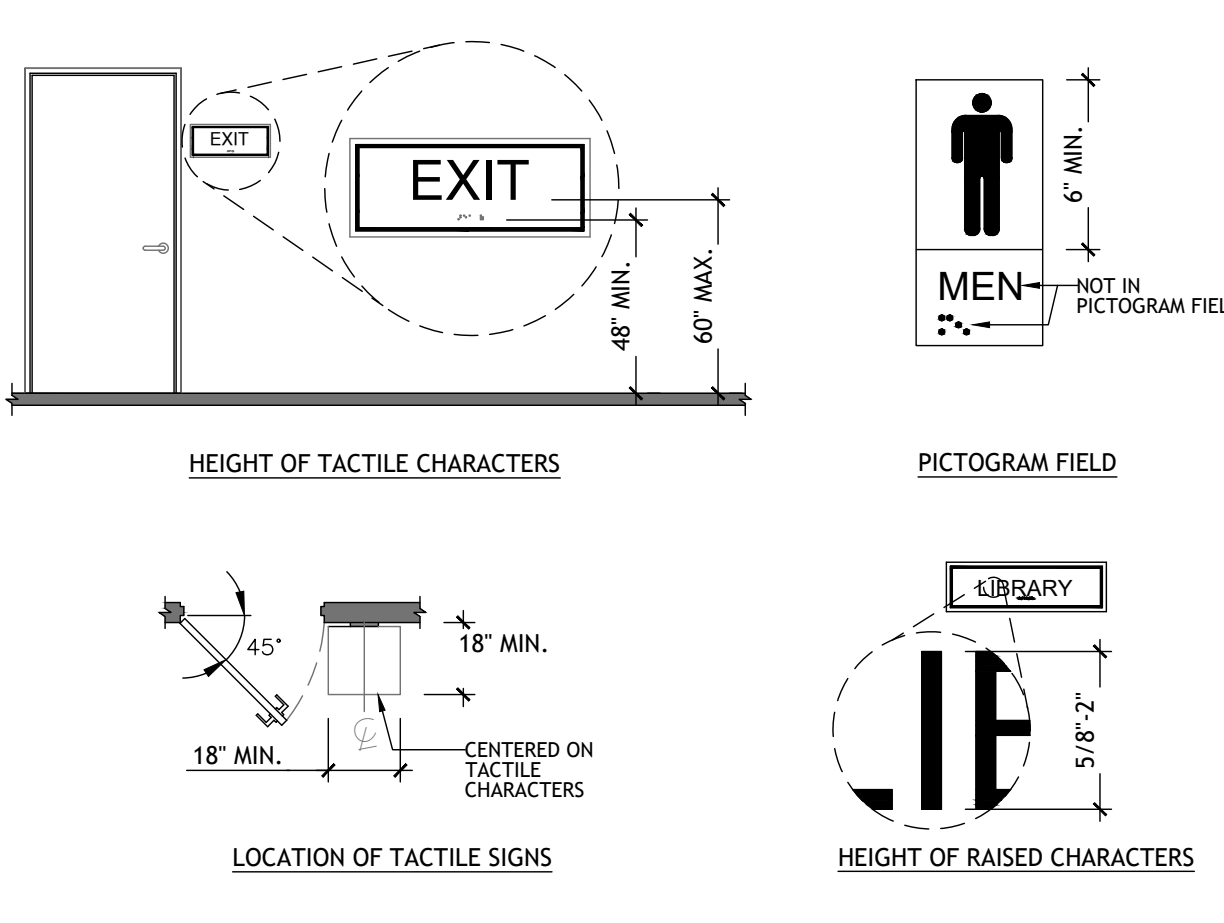
SHEET TITLE
FLOOR PLAN

SHEET NUMBER
A1



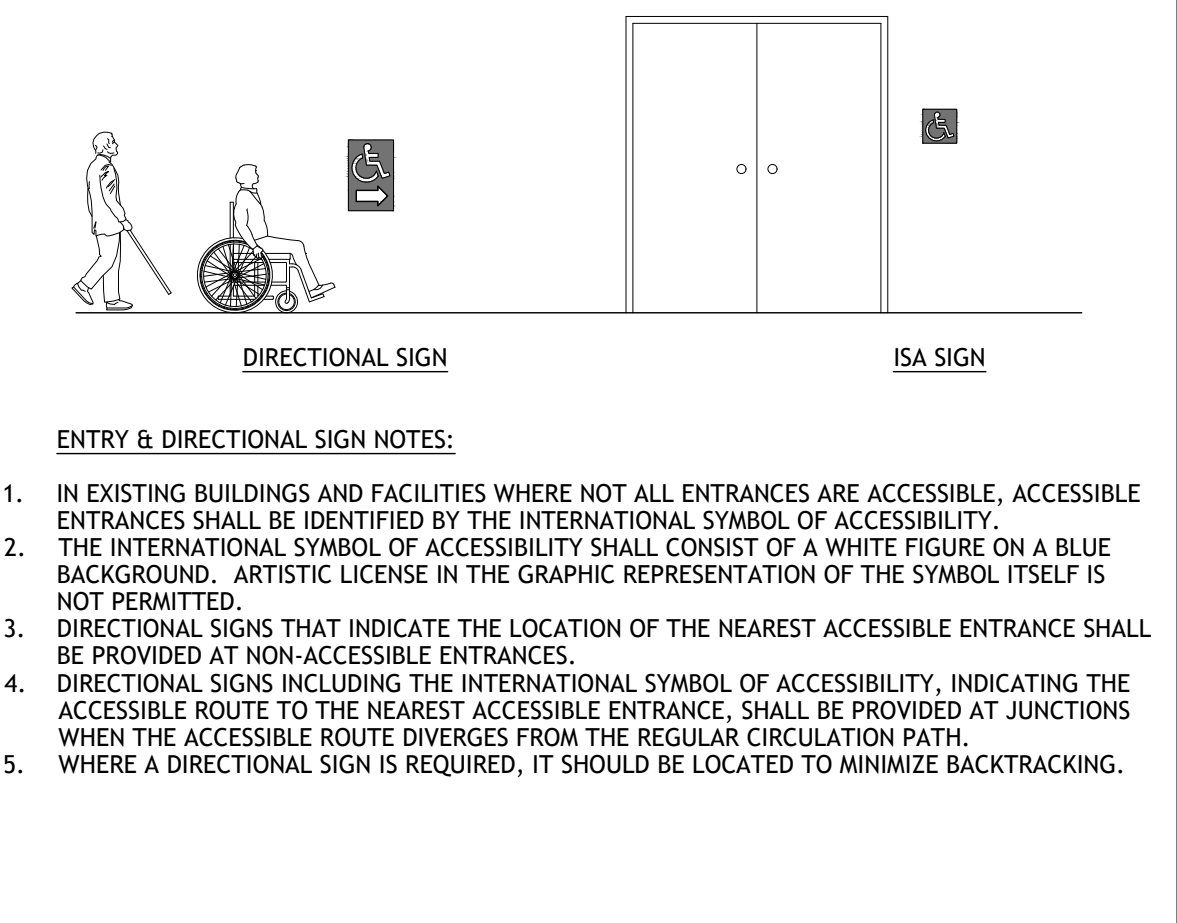
- DOOR NOTES:**
- REVOLVING DOORS, REVOLVING GATES, AND TURNSTILES SHALL NOT BE PART OF AN ACCESSIBLE ROUTE.
 - AT LEAST ONE OF THE ACTIVE LEAVES OF DOORWAYS WITH TWO LEAVES SHALL.
 - DOOR OPENINGS SHALL PROVIDE A CLEAR WIDTH OF 32 INCHES MINIMUM. CLEAR OPENINGS OF DOORWAYS WITH SWINGING DOORS SHALL BE MEASURED BETWEEN THE FACE OF THE DOOR AND THE STOP, WITH THE DOOR OPEN 90 DEGREES. IN ALTERATIONS, A PROJECTION OF 5/8 INCH MAXIMUM INTO THE REQUIRED CLEAR WIDTH SHALL BE PERMITTED FOR THE LATCH SIDE STOP.
 - THERE SHALL BE NO PROJECTIONS INTO THE REQUIRED CLEAR OPENING WIDTH LOWER THAN 34 INCHES ABOVE THE FINISH FLOOR OR GROUND. PROJECTIONS INTO THE CLEAR OPENING WIDTH BETWEEN 34 INCHES AND 80 INCHES ABOVE THE FINISH FLOOR OR GROUND SHALL NOT EXCEED 4 INCHES.
 - MANEUVERING CLEARANCES FOR FORWARD APPROACH SHALL BE PROVIDED WHEN ANY OBSTRUCTION WITHIN 18 INCHES OF THE LATCH SIDE AT AN INTERIOR DOORWAY, OR WITHIN 24 INCHES OF THE LATCH SIDE OF AN EXTERIOR DOORWAY, PROJECTS MORE THAN 8 INCHES BEYOND THE FACE OF THE DOOR, MEASURED PERPENDICULAR TO THE FACE OF THE DOOR OR GATE.
 - CHANGES IN LEVEL, SLOPES EXCEEDING 1:48, AND DETECTABLE WARNINGS SHALL NOT BE PERMITTED WITHIN REQUIRED MANEUVERING CLEARANCES.
 - THRESHOLDS, IF PROVIDED AT DOORWAYS, SHALL BE 1/2 INCH HIGH MAXIMUM.
 - THE DISTANCE BETWEEN TWO HINGED OR PIVOTED DOORS IN SERIES AND GATES IN SERIES SHALL BE 48 INCHES MINIMUM PLUS THE WIDTH OF DOORS OR GATES SWINGING INTO THE SPACE.
 - HANDLES, PULLS, LATCHES, LOCKS, AND OTHER OPERABLE PARTS ON DOORS AND GATES SHALL BE OPERABLE WITH ONE HAND AND SHALL NOT REQUIRE TIGHT GRASPING, PINCHING, OR TWISTING OF THE WRIST. THE FORCE REQUIRED TO ACTIVATE OPERABLE PARTS SHALL BE 5 POUNDS MAXIMUM.
 - OPERABLE PARTS OF HARDWARE SHALL BE 34 INCHES MINIMUM AND 44 INCHES MAXIMUM ABOVE THE FINISH FLOOR OR GROUND.
 - DOOR CLOSERS AND GATE CLOSERS SHALL BE ADJUSTED SO THAT FROM AN OPEN POSITION OF 90 DEGREES, THE TIME REQUIRED TO MOVE THE DOOR TO A POSITION OF 12 DEGREES FROM THE LATCH IS 5 SECONDS MAXIMUM.
 - THE FORCE FOR PUSHING OR PULLING OPEN A DOOR OR GATE SHALL BE 5 POUNDS MAXIMUM.
 - THE FORCE FOR PUSHING OR PULLING OPEN DOORS SHALL BE THE MINIMUM OPENING FORCE ALLOWABLE BY THE APPROPRIATE ADMINISTRATIVE AUTHORITY, NOT TO EXCEED 15 POUNDS.
 - SWINGING DOOR AND GATE SURFACES WITHIN 10 INCHES OF THE FINISH FLOOR OR GROUND MEASURED VERTICALLY SHALL HAVE A SMOOTH SURFACE ON THE PUSH SIDE EXTENDING THE FULL WIDTH OF THE DOOR OR GATE.
 - AUTOMATIC DOORS AND AUTOMATIC GATES SHALL COMPLY WITH SECTION 11B-404.3. FULL-POWERED AUTOMATIC DOORS SHALL COMPLY WITH ANSI/BHMA A156.10. LOW-ENERGY AND POWER-ASSISTED DOORS SHALL COMPLY WITH ANSI/BHMA A156.19.

DOORS N.T.S. 4 CA-118-404



- SIGN TEXT**
- WHERE BOTH VISUAL AND TACTILE CHARACTERS ARE REQUIRED, EITHER ONE SIGN WITH BOTH VISUAL AND TACTILE CHARACTERS, OR TWO SEPARATE SIGNS, ONE WITH VISUAL, AND ONE WITH TACTILE CHARACTERS, SHALL BE PROVIDED.
 - RAISED CHARACTERS SHALL BE DUPLICATED IN BRAILLE.
 - RAISED CHARACTERS SHALL BE 1/32 INCH MINIMUM ABOVE THEIR BACKGROUND, UPPER CASE AND SAN'S SERIF FONT.
 - CHARACTER HEIGHT MEASURED VERTICALLY FROM THE BASELINE OF THE CHARACTER SHALL BE 5/8 INCH MINIMUM AND 2 INCHES MAXIMUM BASED ON THE HEIGHT OF THE UPPER CASE LETTER "H".
 - STROKE THICKNESS OF THE UPPER CASE LETTER "I" SHALL BE 15 PERCENT MAXIMUM OF THE HEIGHT OF THE CHARACTER.
 - TEXT SHALL BE IN A HORIZONTAL FORMAT.
- SIGN BRAILLE**
- BRAILLE SHALL BE CONTRACTED (GRADE 2) AND SHALL COMPLY WITH SECTIONS 11B-703.3 AND 11B-703.4.
 - BRAILLE DOTS SHALL HAVE A DOMED OR ROUNDED SHAPE AND SHALL COMPLY WITH TABLE 11B-703.3.1 OF THE CBC. THE INDICATION OF AN UPPER CASE LETTER OR LETTERS SHALL ONLY BE USED BEFORE THE FIRST WORD OF SENTENCES, PROPER NOUNS AND NAMES, INDIVIDUAL LETTERS OF THE ALPHABET, INITIALS, AND ACRONYMS.
 - BRAILLE SHALL BE POSITIONED BELOW THE CORRESPONDING TEXT IN A HORIZONTAL FORMAT, FLUSH LEFT OR CENTERED. IF TEXT IS MULTI-LINED, BRAILLE SHALL BE PLACED BELOW THE ENTIRE TEXT. BRAILLE SHALL BE SEPARATED 3/8 INCH MINIMUM AND 1/2 INCH MAXIMUM FROM ANY OTHER TACTILE CHARACTERS AND 3/8 INCH MINIMUM FROM RAISED BORDERS AND DECORATIVE ELEMENTS.
- SIGN INSTALLATION**
- TACTILE CHARACTERS ON SIGNS SHALL BE LOCATED 48 INCHES MINIMUM ABOVE THE FINISH FLOOR OR GROUND SURFACE, MEASURED FROM THE BASELINE OF THE LOWEST BRAILLE CELLS AND 60 INCHES MAXIMUM ABOVE THE FINISH FLOOR OR GROUND SURFACE, MEASURED FROM THE BASELINE OF THE HIGHEST LINE OF RAISED CHARACTERS.

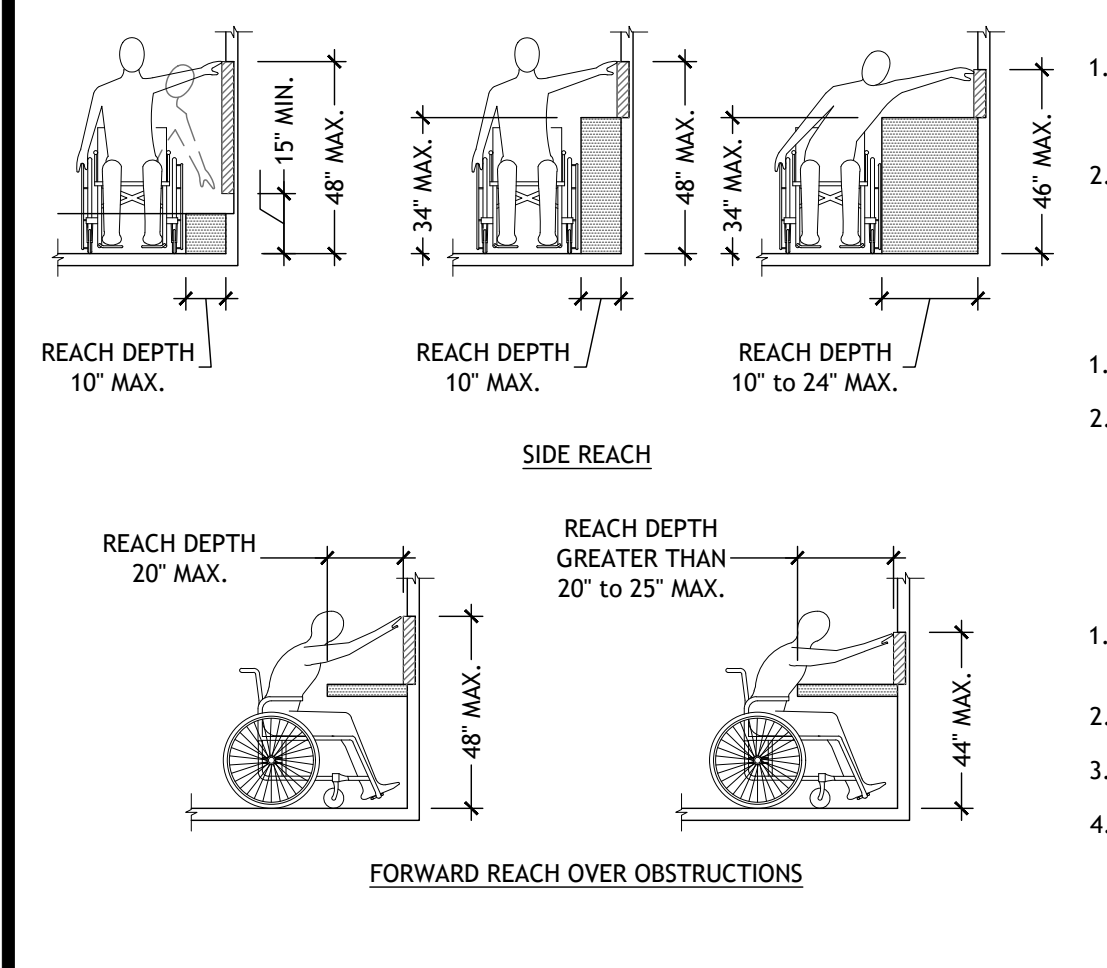
- WHERE A TACTILE SIGN IS PROVIDED AT A DOOR, THE SIGN SHALL BE LOCATED ALONGSIDE THE DOOR AT THE LATCH SIDE, WHERE A TACTILE SIGN IS PROVIDED AT DOUBLE DOORS WITH ONE ACTIVE LEAF, THE SIGN SHALL BE LOCATED ON THE INACTIVE LEAF, WHERE A TACTILE SIGN IS PROVIDED AT DOUBLE DOORS WITH TWO ACTIVE LEAFS, THE SIGN SHALL BE LOCATED TO THE RIGHT OF THE RIGHT HAND DOOR, WHERE THERE IS NO SPACE AT THE LATCH SIDE OF A SINGLE DOOR OR AT THE RIGHT SIDE OF DOUBLE DOORS, SIGNS SHALL BE LOCATED ON THE NEAREST ADJACENT WALL. SIGNS CONTAINING TACTILE CHARACTERS SHALL BE LOCATED SO THAT A CLEAR FLOOR SPACE OF 18 INCHES MINIMUM BY 18 INCHES MINIMUM, CENTERED ON THE TACTILE CHARACTER, IS PROVIDED BEYOND THE ARC OF ANY DOOR SWING BETWEEN THE CLOSED POSITION AND 45 DEGREE OPEN POSITION, WHERE PROVIDED, SIGNS IDENTIFYING PERMANENT ROOMS AND SPACES SHALL BE LOCATED AT THE ENTRANCE TO, AND OUTSIDE OF THE ROOM OR SPACE, WHERE PROVIDED, SIGNS IDENTIFYING EXITS SHALL BE LOCATED AT THE EXIT DOOR WHEN APPROACHED IN THE DIRECTION OF EGRESS TRAVEL.**
- VISUAL CHARACTERS**
- CHARACTERS AND THEIR BACKGROUND SHALL HAVE A NON-GLARE FINISH. CHARACTERS SHALL CONTRAST WITH THEIR BACKGROUND WITH EITHER LIGHT CHARACTERS ON A DARK BACKGROUND OR DARK CHARACTERS ON A LIGHT BACKGROUND.
 - VISUAL CHARACTERS SHALL BE 40 INCHES MINIMUM ABOVE THE FINISH FLOOR OR GROUND.
- PICTOGRAMS**
- PICTOGRAMS SHALL HAVE A FIELD HEIGHT OF 6 INCHES MINIMUM. CHARACTERS AND BRAILLE SHALL NOT BE LOCATED IN THE PICTOGRAM FIELD.
 - PICTOGRAMS AND THEIR FIELD SHALL HAVE A NON-GLARE FINISH. PICTOGRAMS SHALL CONTRAST WITH THEIR FIELD WITH EITHER A LIGHT PICTOGRAM ON A DARK FIELD OR A DARK PICTOGRAM ON A LIGHT FIELD.
 - PICTOGRAMS SHALL HAVE TEXT DESCRIPTORS LOCATED DIRECTLY BELOW THE PICTOGRAM FIELD.



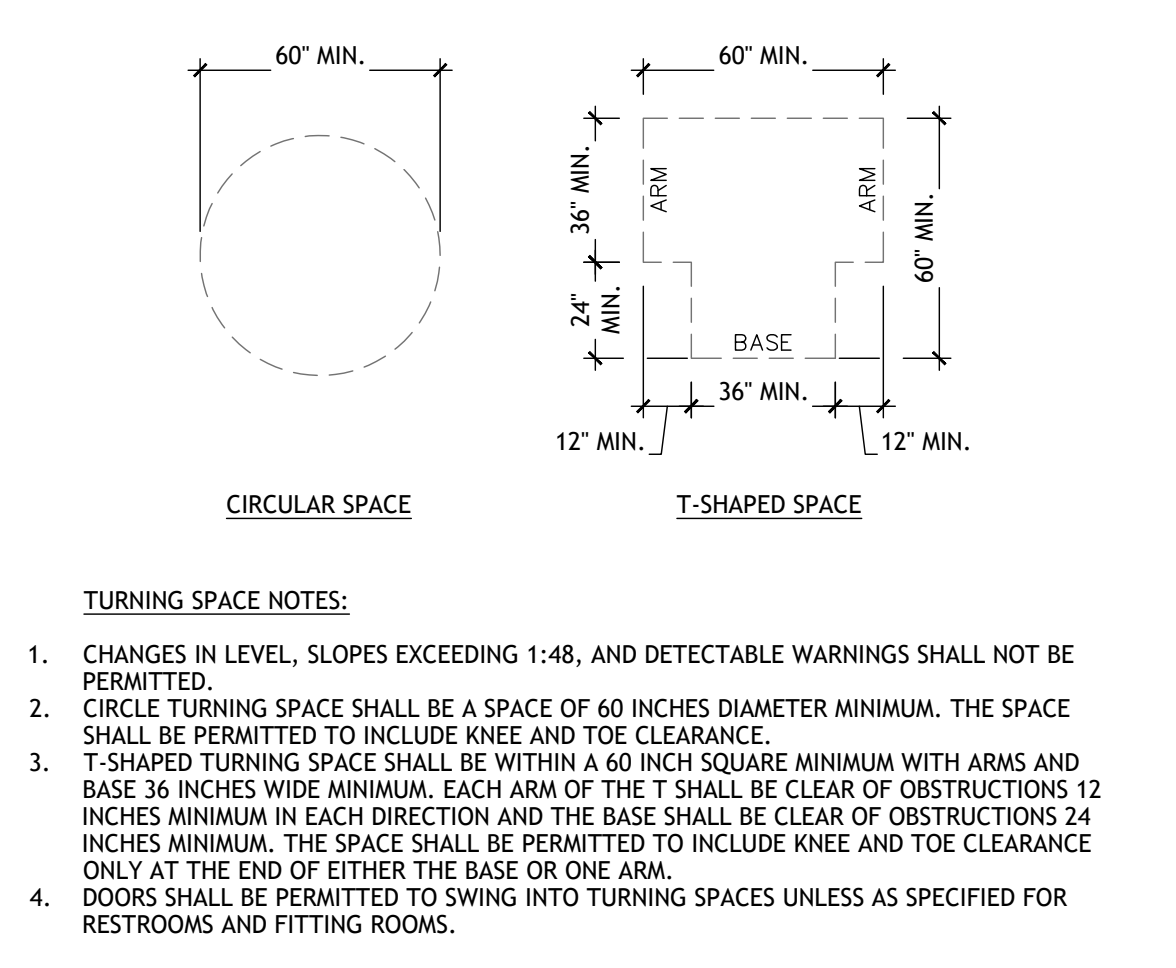
- ENTRY & DIRECTIONAL SIGN NOTES:**
- IN EXISTING BUILDINGS AND FACILITIES WHERE NOT ALL ENTRANCES ARE ACCESSIBLE, ACCESSIBLE ENTRANCES SHALL BE IDENTIFIED BY THE INTERNATIONAL SYMBOL OF ACCESSIBILITY.
 - THE INTERNATIONAL SYMBOL OF ACCESSIBILITY SHALL CONSIST OF A WHITE FIGURE ON A BLUE BACKGROUND. ARTISTIC LICENSE IN THE GRAPHIC REPRESENTATION OF THE SYMBOL ITSELF IS NOT PERMITTED.
 - DIRECTIONAL SIGNS THAT INDICATE THE LOCATION OF THE NEAREST ACCESSIBLE ENTRANCE SHALL BE PROVIDED AT NON-ACCESSIBLE ENTRANCES.
 - DIRECTIONAL SIGNS INCLUDING THE INTERNATIONAL SYMBOL OF ACCESSIBILITY, INDICATING THE ACCESSIBLE ROUTE TO THE NEAREST ACCESSIBLE ENTRANCE, SHALL BE PROVIDED AT JUNCTIONS WHEN THE ACCESSIBLE ROUTE DIVERGES FROM THE REGULAR CIRCULATION PATH.
 - WHERE A DIRECTIONAL SIGN IS REQUIRED, IT SHOULD BE LOCATED TO MINIMIZE BACKTRACKING.

TACTILE SIGNS N.T.S. 6 CA-118-703

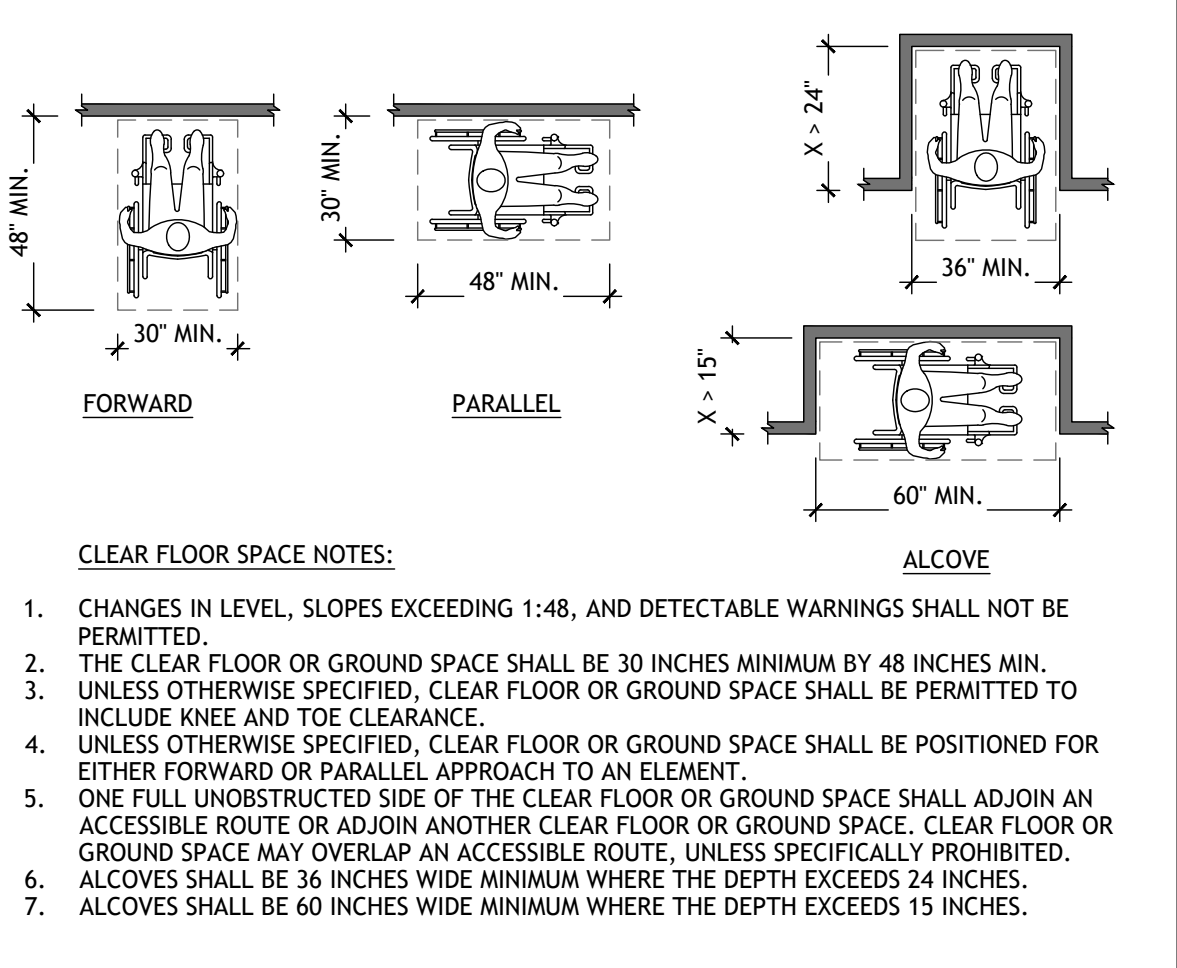
ENTRY AND DIRECTIONAL SIGNS N.T.S. 3 CA-118-216.6, 11B-703.7.2.1



- ELECTRICAL REACHES:**
- CONTROLS AND SWITCHES INTENDED TO BE USED BY THE OCCUPANT OF A ROOM OR AREA TO CONTROL LIGHTING AND RECEPTACLE OUTLETS, APPLIANCES OR COOLING, HEATING AND VENTILATING EQUIPMENT, SHALL COMPLY WITH SECTION 11B-308 EXCEPT THE LOW REACH SHALL BE MEASURED TO THE BOTTOM OF THE OUTLET BOX AND THE HIGH REACH SHALL BE MEASURED TO THE TOP OF THE OUTLET BOX.
 - ELECTRICAL RECEPTACLE OUTLETS ON BRANCH CIRCUITS OF 30 AMPERES OR LESS AND COMMUNICATION SYSTEM RECEPTACLES SHALL COMPLY WITH SECTION 11B-308 EXCEPT THE LOW REACH SHALL BE MEASURED TO THE BOTTOM OF THE OUTLET BOX AND THE HIGH REACH SHALL BE MEASURED TO THE TOP OF THE OUTLET BOX.
- FORWARD REACH:**
- WHERE A FORWARD REACH IS UNOBSTRUCTED, THE HIGH FORWARD REACH SHALL BE 48 INCHES MAXIMUM AND THE LOW FORWARD REACH SHALL BE 15 INCHES MINIMUM ABOVE THE FINISH FLOOR OR GROUND.
 - WHERE A HIGH FORWARD REACH IS OVER AN OBSTRUCTION, THE CLEAR FLOOR SPACE SHALL EXTEND BENEATH THE ELEMENT FOR A DISTANCE NOT LESS THAN THE REQUIRED REACH DEPTH OVER THE OBSTRUCTION. THE HIGH FORWARD REACH SHALL BE 48 INCHES MAXIMUM WHERE THE REACH DEPTH IS 20 INCHES MAXIMUM, WHERE THE REACH DEPTH EXCEEDS 20 INCHES, THE HIGH FORWARD REACH SHALL BE 44 INCHES MAXIMUM AND THE REACH DEPTH SHALL BE 25 INCHES MAXIMUM.
- SIDE REACH:**
- WHERE A CLEAR FLOOR OR GROUND SPACE ALLOWS A PARALLEL APPROACH TO AN ELEMENT AND THE SIDE REACH IS UNOBSTRUCTED, THE HIGH SIDE REACH SHALL BE 48 INCHES MAXIMUM AND THE LOW SIDE REACH SHALL BE 15 INCHES MINIMUM ABOVE THE FINISH FLOOR OR GROUND.
 - AN OBSTRUCTION SHALL BE PERMITTED BETWEEN THE CLEAR FLOOR OR GROUND SPACE AND THE ELEMENT WHERE THE DEPTH OF THE OBSTRUCTION IS 10 INCHES MAXIMUM.
 - OPERABLE PARTS OF FUEL DISPENSERS SHALL BE PERMITTED TO BE 54 INCHES MAXIMUM MEASURED FROM THE SURFACE OF THE VEHICULAR WAY WHERE FUEL DISPENSERS ARE INSTALLED ON EXISTING CURBS.
 - WHERE A CLEAR FLOOR OR GROUND SPACE ALLOWS A PARALLEL APPROACH TO AN ELEMENT AND THE HIGH SIDE REACH IS OVER AN OBSTRUCTION, THE HEIGHT OF THE OBSTRUCTION SHALL BE 34 INCHES MAXIMUM AND THE DEPTH OF THE OBSTRUCTION SHALL BE 24 INCHES MAXIMUM. THE HIGH SIDE REACH SHALL BE 48 INCHES MAXIMUM FOR A REACH DEPTH OF 10 INCHES MAXIMUM, WHERE THE REACH DEPTH EXCEEDS 10 INCHES, THE HIGH SIDE REACH SHALL BE 46 INCHES MAXIMUM FOR A REACH DEPTH OF 24 INCHES MAXIMUM.



- TURNING SPACE NOTES:**
- CHANGES IN LEVEL, SLOPES EXCEEDING 1:48, AND DETECTABLE WARNINGS SHALL NOT BE PERMITTED.
 - CIRCLE TURNING SPACE SHALL BE A SPACE OF 60 INCHES DIAMETER MINIMUM. THE SPACE SHALL BE PERMITTED TO INCLUDE KNEE AND TOE CLEARANCE.
 - T-SHAPED TURNING SPACE SHALL BE WITHIN A 60 INCH SQUARE MINIMUM WITH ARMS AND BASE 36 INCHES WIDE MINIMUM. EACH ARM OF THE T SHALL BE CLEAR OF OBSTRUCTIONS 12 INCHES MINIMUM IN EACH DIRECTION AND THE BASE SHALL BE CLEAR OF OBSTRUCTIONS 24 INCHES MINIMUM. THE SPACE SHALL BE PERMITTED TO INCLUDE KNEE AND TOE CLEARANCE ONLY AT THE END OF EITHER THE BASE OR ONE ARM.
 - DOORS SHALL BE PERMITTED TO SWING INTO TURNING SPACES UNLESS AS SPECIFIED FOR RESTROOMS AND FITTING ROOMS.

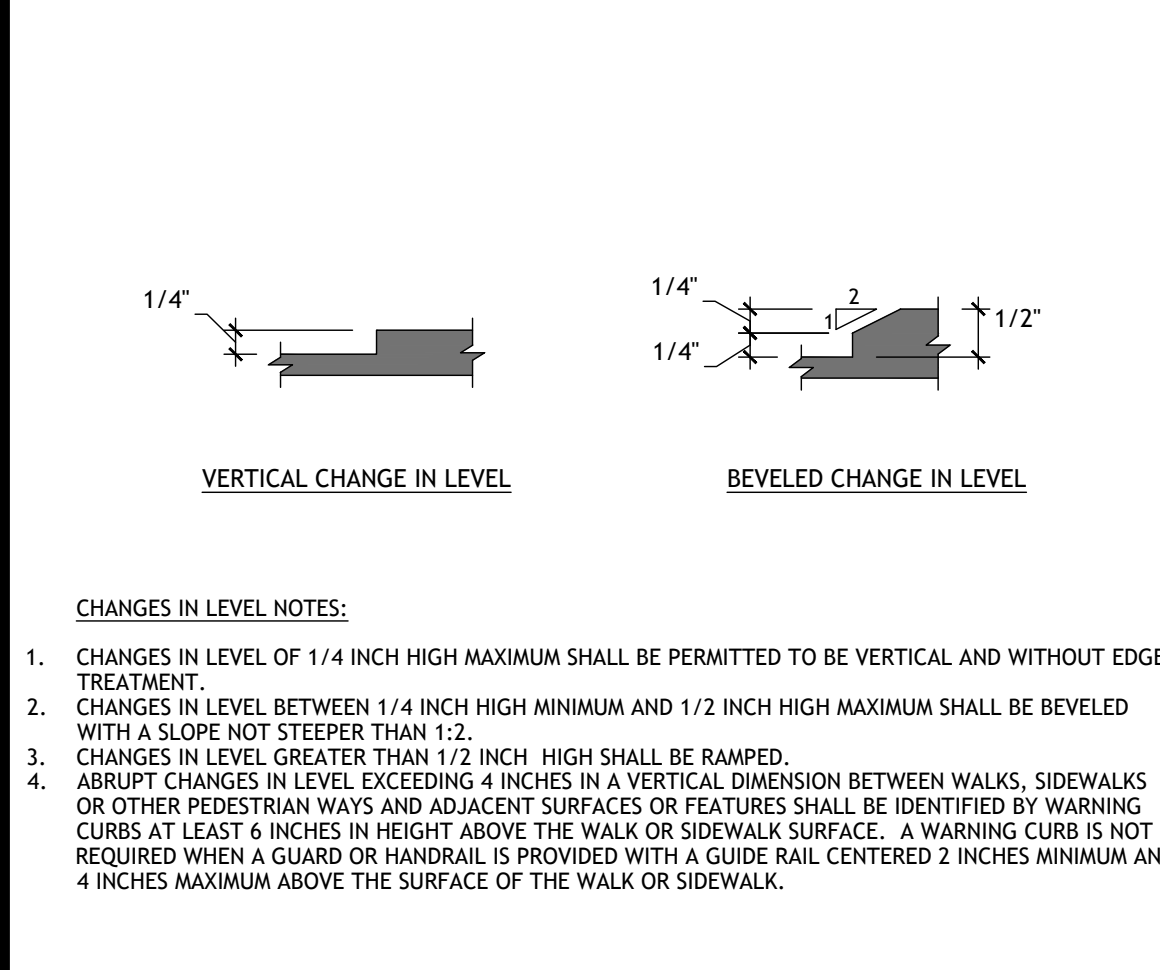


- CLEAR FLOOR SPACE NOTES:**
- CHANGES IN LEVEL, SLOPES EXCEEDING 1:48, AND DETECTABLE WARNINGS SHALL NOT BE PERMITTED.
 - THE CLEAR FLOOR OR GROUND SPACE SHALL BE 30 INCHES MINIMUM BY 48 INCHES MIN.
 - UNLESS OTHERWISE SPECIFIED, CLEAR FLOOR OR GROUND SPACE SHALL BE PERMITTED TO INCLUDE KNEE AND TOE CLEARANCE.
 - UNLESS OTHERWISE SPECIFIED, CLEAR FLOOR OR GROUND SPACE SHALL BE POSITIONED FOR EITHER FORWARD OR PARALLEL APPROACH TO AN ELEMENT.
 - ONE FULL UNOBSTRUCTED SIDE OF THE CLEAR FLOOR OR GROUND SPACE SHALL ADJOIN AN ACCESSIBLE ROUTE OR ADJOIN ANOTHER CLEAR FLOOR OR GROUND SPACE. CLEAR FLOOR OR GROUND SPACE MAY OVERLAP AN ACCESSIBLE ROUTE, UNLESS SPECIFICALLY PROHIBITED.
 - ALCOVES SHALL BE 36 INCHES WIDE MINIMUM WHERE THE DEPTH EXCEEDS 24 INCHES.
 - ALCOVES SHALL BE 60 INCHES WIDE MINIMUM WHERE THE DEPTH EXCEEDS 15 INCHES.

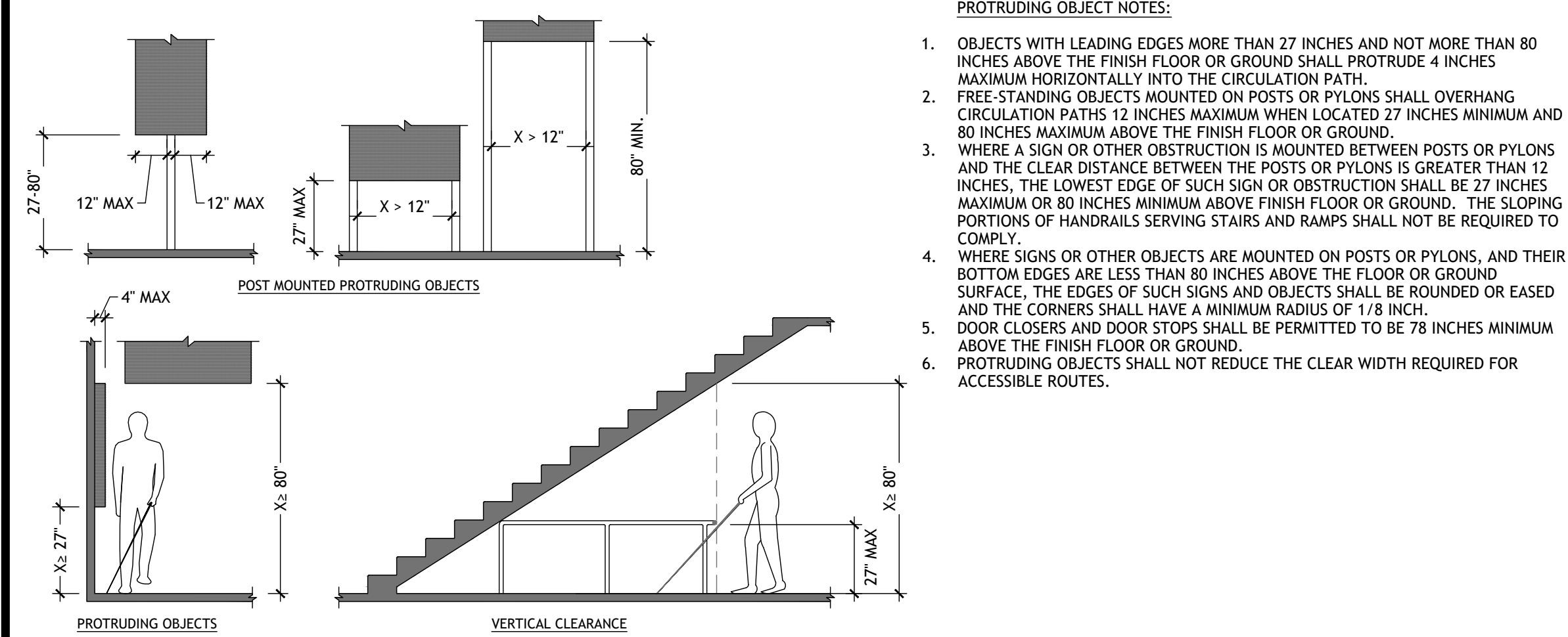
REACH RANGES N.T.S. 8 CA-118-308

TURNING SPACE N.T.S. 5 CA-118-304

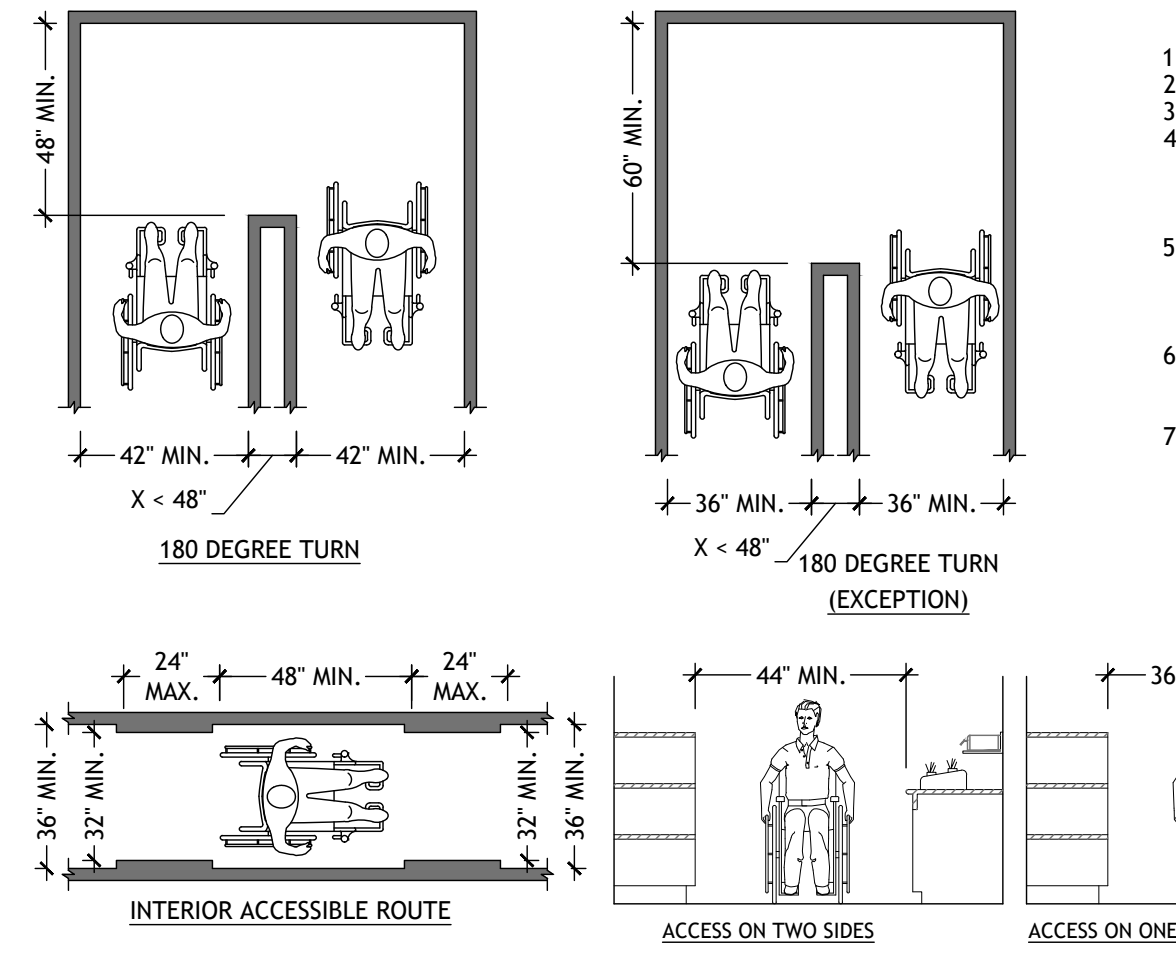
CLEAR FLOOR SPACE N.T.S. 2 CA-118-305



CHANGES IN LEVEL N.T.S. 9 CA-118-303



PROTRUDING OBJECTS N.T.S. 7 CA-118-307



WALKING SURFACES N.T.S. 1 CA-118-403

- WALKING SURFACES NOTES:**
- FLOOR AND GROUND SURFACES SHALL BE STABLE, FIRM, AND SLIP RESISTANT.
 - THE RUNNING SLOPE OF WALKING SURFACES SHALL NOT BE STEEPER THAN 1:20.
 - THE CROSS SLOPE OF WALKING SURFACES SHALL NOT BE STEEPER THAN 1:48.
 - WHERE THE ACCESSIBLE ROUTE MAKES A 180 DEGREE TURN AROUND AN ELEMENT WHICH IS LESS THAN 48 INCHES WIDE, CLEAR WIDTH SHALL BE 42 INCHES MINIMUM APPROACHING THE TURN, 48 INCHES MINIMUM AT THE TURN AND 42 INCHES MINIMUM LEAVING THE TURN. WHERE THE CLEAR WIDTH AT THE TURN IS 60 INCHES MINIMUM COMPLIANCE WITH SECTION 11B-403.5.2 SHALL NOT BE REQUIRED.
 - AN ACCESSIBLE ROUTE WITH A CLEAR WIDTH LESS THAN 60 INCHES SHALL PROVIDE PASSING SPACES AT INTERVALS OF 200 FEET MAXIMUM. PASSING SPACES SHALL BE EITHER: A SPACE 60 INCHES MINIMUM BY 60 INCHES MINIMUM; OR, AN INTERSECTION OF TWO WALKING SURFACES PROVIDING A T-SHAPED SPACE.
 - ALL WALKS WITH CONTINUOUS GRADIENTS SHALL HAVE RESTING AREAS, 60 INCHES IN LENGTH, AT INTERVALS OF 200 FEET MAXIMUM. THE RESTING AREA SHALL BE AT LEAST AS WIDE AS THE WALK. THE SLOPE OF THE RESTING AREA IN ALL DIRECTIONS SHALL BE 1:48 MAXIMUM.
 - WALKING SURFACE WIDTH:
 - EXTERIOR - THE CLEAR WIDTH FOR SIDEWALKS AND WALKS SHALL BE 48 INCHES MINIMUM, WHEN, BECAUSE OF RIGHT-OF-WAY RESTRICTIONS, NATURAL BARRIERS OR OTHER EXISTING CONDITIONS, THE ENFORCING AGENCY DETERMINE THAT COMPLIANCE WITH THE 48-INCH CLEAR SIDEWALK WIDTH WOULD CREATE AN UNREASONABLE HARDSHIP, THE CLEAR WIDTH MAY BE REDUCED TO 36 INCHES.
 - INTERIOR - THE CLEAR WIDTH OF WALKING SURFACES SHALL BE 36 INCHES MINIMUM.
 - a. THE CLEAR WIDTH SHALL BE PERMITTED TO BE REDUCED TO 32 INCHES MINIMUM FOR A LENGTH OF 24 INCHES MAXIMUM PROVIDED THAT REDUCED WIDTH SEGMENTS ARE SEPARATED BY SEGMENTS THAT ARE 48 INCHES LONG MINIMUM AND 36 INCHES WIDE MINIMUM.
 - b. THE CLEAR WIDTH FOR WALKING SURFACES IN CORRIDORS SERVING AN OCCUPANT LOAD OF 10 OR MORE SHALL BE 44 INCHES MINIMUM.
 - c. THE CLEAR WIDTH FOR AISLES SHALL BE 36 INCHES MINIMUM IF SERVING ELEMENTS ON ONLY ONE SIDE, AND 44 INCHES MINIMUM IF SERVING ELEMENTS ON BOTH SIDES.
 - d. THE CLEAR WIDTH FOR ACCESSIBLE ROUTES TO ACCESSIBLE TOILET COMPARTMENTS SHALL BE 44 INCHES EXCEPT FOR DOOR-OPENING WIDTHS AND DOOR SWINGS.

WALKING SURFACES N.T.S. 1 CA-118-403

DRAWING ISSUANCE

DATE	ISSUED FOR PERMIT
06/28/2022	

TENANT IMPROVEMENT
 1425-1435 N. DUTTON AVE.
 SANTA ROSA, CA 95401

REVISIONS	BY

O'ROURKE ELECTRIC Inc
 CALIFORNIA LICENSE 682968
 P.O. BOX 6161 - SANTA ROSA, CA 95406
 PHONE (707) 526-6539 FAX (707) 528-2506

TENANT IMPROVEMENT
 1425 - 1435 NORTH DUTTON AVENUE
 SANTA ROSA, CALIFORNIA
 APN: 036-263-001

COVER SHEET


Date: 06.27.2022
 Scale: NONE
 Drawn: JJ
 Job: 22.09
 Sheet: **E0.1**
 Of 5 Sheets

GENERAL NOTES	ABBREVIATIONS	INDEX TO DRAWINGS		
<ol style="list-style-type: none"> 1. ALL PRODUCTS AND EXECUTION OF WORK SHALL BE IN ACCORDANCE WITH THE SPECIFICATIONS AND AS SHOWN ON THE PLANS. 2. ALL ELECTRICAL WORK SHALL COMPLY WITH THE 2019 CALIFORNIA ELECTRICAL CODE (AS AMENDED BY THE 2017 NATIONAL ELECTRICAL CODE), FIRE CODE, A.D.A. AND ALL LOCAL CODES AND ORDINANCES. 3. ALL LABOR, NEW MATERIALS AND EQUIPMENT (U.O.N.) TOOLS AND SERVICES REQUIRED FOR THE COMPLETE ELECTRICAL INSTALLATION AS SHOWN AND SPECIFIED SHALL BE PROVIDED. 4. IN THE EVENT OF A DISCREPANCY BETWEEN CONTRACT DRAWINGS AND SPECIFICATIONS, THE MOST STRINGENT SHALL GOVERN. 5. THE INSTALLATION SHALL BE FREE FROM DEFECTS OF WORKMANSHIP AND MATERIALS FOR A PERIOD OF ONE YEAR FROM THE DATE OF ACCEPTANCE. 6. THE ELECTRICAL DRAWINGS ARE DIAGRAMMATIC AND DO NOT SHOW ALL OFFSETS, BENDS, FITTINGS, JUNCTION BOXES AND PULL BOXES REQUIRED TO MEET FIELD CONDITIONS. 7. THE ENTIRE ELECTRICAL SYSTEM SHALL BE GROUNDED AS REQUIRED BY ALL APPLICABLE CODES AND THE SERVING UTILITY. 8. ALL CIRCUIT BREAKERS, FUSES AND ELECTRICAL EQUIPMENT SHALL BE SERIES RATED FOR NOT LESS THAN THE MAXIMUM SHORT CIRCUIT CURRENT TO WHICH THEY MAY BE SUBJECT TO. 9. ALL DISCONNECTING MEANS FOR MOTORS SHALL BE WITHIN SITE OF THE MOTOR (NOT OVER 25 FT.) OR BE CAPABLE OF BEING LOCKED IN THE OPEN POSITION. 10. PENETRATIONS IN FIRE RATED WALLS OR THROUGH FLOORS, SHALL BE FIRE-STOPPED IN ACCORDANCE WITH THE LATEST C.B.C. AND FIRE CODES. 11. A TYPEWRITTEN DIRECTORY CARD SHALL BE IN ALL PANELS, IDENTIFYING THE LOAD SERVED BY EACH CIRCUIT BREAKER. 12. DIMENSIONS SHOWN ON OUTLET BOXES SHALL BE FROM THE FINISHED FLOOR TO THE CENTER OF THE BOX. 13. OUTDOOR RECEPTACLES SHALL BE GFCI TYPE AND SUITABLE FOR WET LOCATION IN A NEMA 3R ENCLOSURE. 14. ALL CONDUCTORS SHALL BE COPPER (U.N.O.). ALL WIRE SHALL BE RATED FOR 600 VOLTS, NUMBER 12 MINIMUM SIZE EXCEPT FOR CONTROLS AND FIXTURE WHIPS. 15. ALL FEEDER CONDUCTORS AND BRANCH CIRCUIT WIRING SHALL BE TYPE THWN OR THHN COPPER. 16. ALL WIRE SHALL BE IN CONDUIT. ELECTRICAL METALLIC TUBING (EMT), RIGID METAL CONDUIT, RIGID ALUMINUM, (IMC), FLEXIBLE METAL CONDUIT, LIQUIDTIGHT FLEXIBLE CONDUIT AND RIGID NONMETALLIC CONDUIT AS ALLOWED PER CHAPTER 3 OF THE N.E.C. 17. METAL CLAD CABLE (TYPE MC) SHALL BE PERMITTED AS PER ARTICLE 330 N.E.C. 18. WORKING SPACE SHALL BE PROVIDED IN FRONT OF ELECTRICAL EQUIPMENT PER N.E.C. 110-26. 	<p>A.F.F. ABOVE FINISHED FLOOR C CONDUIT (E) EXISTING EDF ELECTRIC DRINKING FOUNTAIN EMT EMPTY CONDUIT WITH PULL CORD GRD GROUND IG ISOLATED GROUND (N) NEW NL NIGHT LIGHT PNL PANEL BOARD U.O.N. UNLESS OTHERWISE NOTED VL VERIFY LOCATION</p>	<p>E0.1 COVER SHEET—GENERAL NOTES, ABBREVIATIONS, INDEX TO DRAWINGS, POWER LEGEND, LIGHTING LEGEND, & SITE LIGHTING LEGEND E2.1 POWER PLAN E6.1 PANEL SCHEDULES, 1—LINE DIAGRAM</p>		
SCOPE OF WORK				
ADD NEW GENERATOR AT EXISTING FRONT RESIDENCE				
POWER LEGEND	LIGHTING LEGEND	SITE LIGHTING LEGEND		
<p> DUPLEX OUTLET 125V, +18" A.F.F. U.O.N. DUPLEX OUTLET—DEDICATED 125V, +18" U.O.N. DUPLEX OUTLET—WATERPROOF 125V, +18" U.O.N. DUPLEX OUTLET MOUNTED # " A.F.F. 125V DUPLEX OUTLET W/ GRD. FAULT INT. 125V, +18" U.O.N. DUPLEX OUTLET—HALF SWITCHED 125V, +18" U.O.N. FOURPLEX OUTLET 125V, +18" U.O.N. SINGLE RECEPTACLE—RATED AS INDICATED FUSED RECEPTACLE FLOOR RECEPTACLE 125V FLOOR TELEPHONE OUTLET TELEPHONE JACK TELEPHONE/DATA JACK DATA JACK J BOX SURFACE MOUNTED ELEC. PANEL FLUSH MOUNTED ELEC. PANEL DISCONNECT, SAFETY SWITCH CARD READER </p>	<p> TRANSFORMER HOME RUN TO PANEL CONDUIT & WIRE RUN—CROSSMARKS DENOTES # OF CONDUCTORS—NO MARKS=#12 U.O.N. 20A 240V (SPLIT PHASE) 20A 230V (1-PH) 30A 208V (3-PH) 30A 480V (3-PH) 20A 120V POWER POLE BASE FEED 120V DENOTES ABOVE INSTALLATION EMERGENCY POWER OFF SWITCH MOTOR EV CHARGER </p>	<p> SINGLE POLE SWITCH 3-WAY SWITCH 4-WAY SWITCH DIMMER SWITCH MOTION SWITCH LOW VOLTAGE SWITCH TIMER SWITCH KEYED SWITCH DUAL SWITCH DUAL MOTION SWITCH DUAL LOW VOLTAGE SWITCH CEILING MOUNTED OCCUPANCY SENSOR DAYLIGHT SENSOR ROOM LIGHTING CONTROLLER (POWER/RELAY PACK) SURFACE MOUNTED FIXTURE RECESSED FIXTURE DIRECTIONAL RECESSED FIXTURE EXHAUST FAN FAN/LIGHT WALL MOUNTED FIXTURE CEILING MOUNTED FAN SMOKE DETECTOR W/ BATTERY BACK UP UNDERCABINET LED FIXTURE SURFACE MOUNTED LED FIXTURE PHOTO SWITCH </p>	<p> WALL MOUNTED LED FIXTURE SURFACE MOUNTED LED STRIP FIXTURE H.I.D. DOWNLIGHT FIXTURE LED TRACK OR LOW VOLT LIGHT FIXTURE 2x2 LAY IN LED FIXTURE 2x4 LAY IN LED FIXTURE 2x2 SURFACE MOUNTED LED FIXTURE 2x4 SURFACE MOUNTED LED FIXTURE EMERGENCY LIGHTING FIXTURE WITH 90 MIN. BATTERY BACK UP LIGHTED EXIT SIGN WITH 90 MIN. BATTERY BACK UP EXIT/EMERGENCY COMBO FIXTURE WITH 90 MIN. BATTERY BACK UP </p>	<p> WALL PACK POLE LAMP WALL LAMP BOLLARD LAMP UP LAMP POLE LIGHT WALL MOUNTED SPOT FIXTURE </p>

Dore O'Rourke

REVISIONS	BY

David O'Rourke

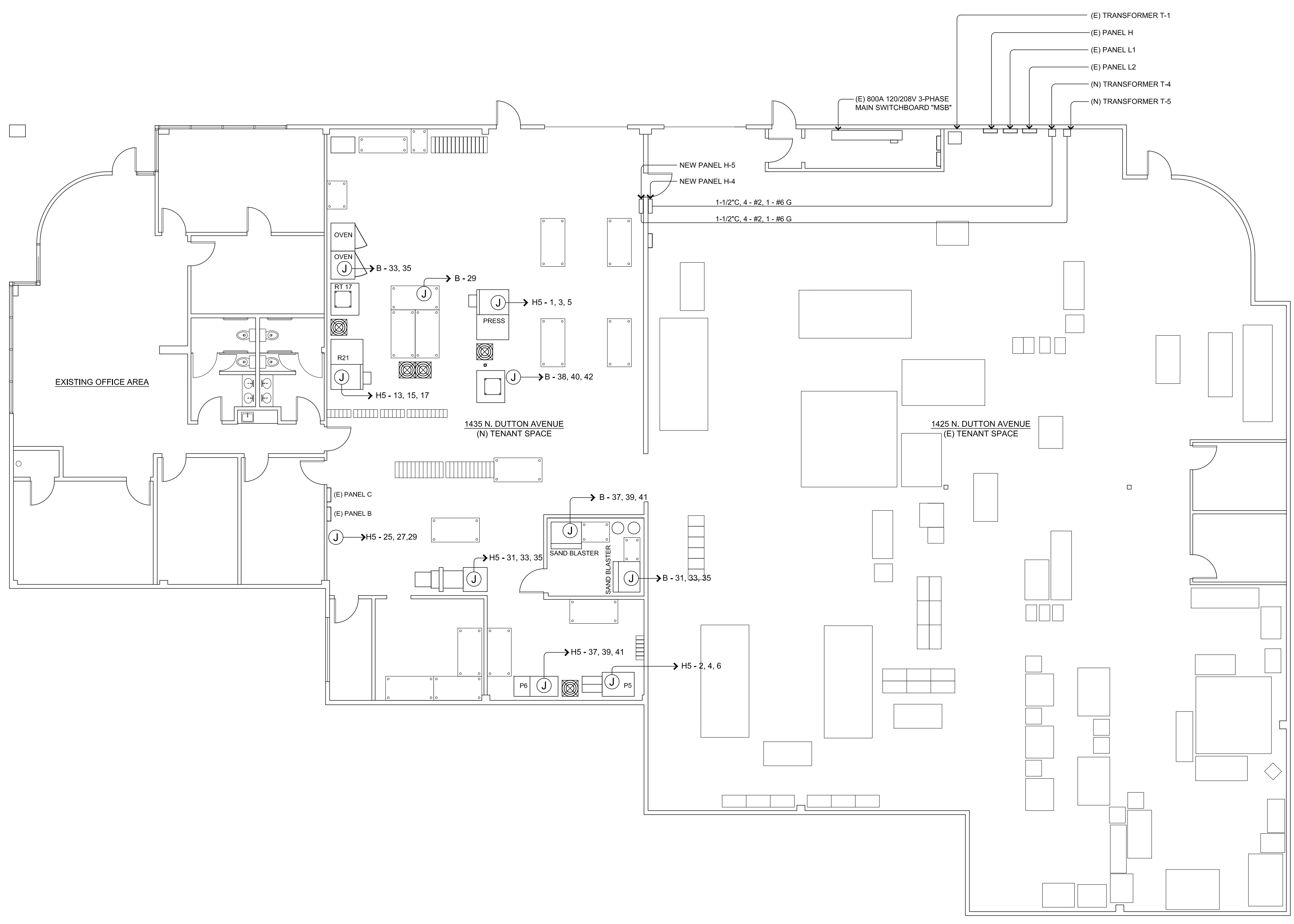


O'Rourke
ELECTRIC Inc.
CALIFORNIA LICENSE 682968
P.O. BOX 8161 - SANTA ROSA, CA 95406
PHONE (707) 528-6539 - FAX (707) 528-2506

TENANT IMPROVEMENT
1425 - 1435 NORTH DUTTON AVENUE
SANTA ROSA, CALIFORNIA
APN: 036-253-001

POWER PLAN

Date:	06.27.2022
Scale:	1/8"=1'-0"
Drawn:	JJ
Job:	22.09
Sheet:	E2.1
Of 5 Sheets	



POWER PLAN
SCALE: 1/8"=1'-0"

PANEL SCHEDULES

NEW PANEL H3 100 AMP FRAME MAIN LUG ONLY
277480V, 3 PHASE, 4 WIRE BRANCH CIR. BOLT-ON SIZE AS INDICATED
42 CIRCUIT, SURFACE MTD. NEMA 1 INTERRUPTING RATING: 14kAIC

CIRCUIT NO.	SERVICES	LOADS				SERVICES	CIRCUIT NO.	SERVICES	CIRCUIT NO.
		LINE	A	B	C				
1 1 20 3	#12 PRESS	3,324	5,263		1,909	PS	#12 20 3	2 2	
3 3 20 3	#12 PRESS	3,324	5,263		1,909	PS	#12 20 3	4 4	
5 5 20 3	#12 PRESS	3,324	5,263		1,909	PS	#12 20 3	6 6	
7 7 20 1	#12 SPACE	0				SPACE	#12 20 1	8 8	
9 9 20 1	#12 SPACE	0				SPACE	#12 20 1	10 10	
11 11 20 1	#12 SPACE	0				SPACE	#12 20 1	12 12	
13 13 20 1	#12 R21	1,662	1,662			SPACE	#12 20 1	14 14	
15 15 20 3	#12 R21	1,662	1,662			SPACE	#12 20 1	16 16	
17 17 20 1	#12 R21	1,662	1,662			SPACE	#12 20 1	18 18	
19 19 20 1	#12 SPACE	0				SPACE	#12 20 1	20 20	
21 21 20 1	#12 SPACE	0				SPACE	#12 20 1	22 22	
23 23 20 1	#12 SPACE	0				SPACE	#12 20 1	24 24	
25 25 20 3	#12 RUBBER MILL	3,600	3,600			SPACE	#12 20 1	26 26	
27 27 20 3	#12 RUBBER MILL	3,600	3,600			SPACE	#12 20 1	28 28	
29 29 20 3	#12 RUBBER MILL	3,600	3,600			SPACE	#12 20 1	30 30	
31 31 20 3	#12 POWER PIN	3,878	3,878			SPACE	#12 20 1	32 32	
33 33 20 3	#12 POWER PIN	3,878	3,878			SPACE	#12 20 1	34 34	
35 35 20 3	#12 POWER PIN	3,878	3,878			SPACE	#12 20 1	36 36	
37 37 20 1	#12 SPACE	0				SPACE	#12 20 1	38 38	
39 39 20 1	#12 SPACE	0				SPACE	#12 20 1	40 40	
41 41 20 1	#12 SPACE	0				SPACE	#12 20 1	42 42	

TOTAL CONNECTED LOAD: 14,403 VA CONTINUOUS, 14,403 VA LARGEST MOTOR LOAD (LML), 14,403 VA KITCHEN LOAD (KL), 0 VA CONNECTED LOAD, 14,403 VA TOTAL N.E.C. COMPUTED LOAD.

BUS B: 14,403 VA CONTINUOUS, 14,403 VA LARGEST MOTOR LOAD (LML), 14,403 VA KITCHEN LOAD (KL), 0 VA CONNECTED LOAD, 14,403 VA TOTAL N.E.C. COMPUTED LOAD.

BUS C: 14,403 VA CONTINUOUS, 14,403 VA LARGEST MOTOR LOAD (LML), 14,403 VA KITCHEN LOAD (KL), 0 VA CONNECTED LOAD, 14,403 VA TOTAL N.E.C. COMPUTED LOAD.

TOTAL: 43,209 VA (0 VA x 0.25) + (0 VA x 0.25) + (0 VA x 0.35) + 43,209 VA = 43,209 VA

CALCULATED LOADS PER CHAPTER 2 OF N.E.C. AMPERES @ 277480V, 3 PHASE = 52 AMPS (AVERAGE) AMPERES @ 277480V, 3 PHASE = 52 AMPS (HIGH PHASE)

NEW PANEL H4 100 AMP FRAME MAIN LUG ONLY
277480V, 3 PHASE, 4 WIRE BRANCH CIR. BOLT-ON SIZE AS INDICATED
42 CIRCUIT, SURFACE MTD. NEMA 1 INTERRUPTING RATING: 14kAIC

CIRCUIT NO.	SERVICES	LOADS				SERVICES	CIRCUIT NO.	SERVICES	CIRCUIT NO.
		LINE	A	B	C				
1 1 20 3	#12 FUTURE LOADS	0				SPACE	#12 20 1	2 2	
3 3 20 3	#12 FUTURE LOADS	0				SPACE	#12 20 1	4 4	
5 5 20 3	#12 FUTURE LOADS	0				SPACE	#12 20 1	6 6	
7 7 20 1	#12 SPACE	0				SPACE	#12 20 1	8 8	
9 9 20 1	#12 SPACE	0				SPACE	#12 20 1	10 10	
11 11 20 1	#12 SPACE	0				SPACE	#12 20 1	12 12	
13 13 20 1	#12 SPACE	0				SPACE	#12 20 1	14 14	
15 15 20 1	#12 SPACE	0				SPACE	#12 20 1	16 16	
17 17 20 1	#12 SPACE	0				SPACE	#12 20 1	18 18	
19 19 20 1	#12 SPACE	0				SPACE	#12 20 1	20 20	
21 21 20 1	#12 SPACE	0				SPACE	#12 20 1	22 22	
23 23 20 1	#12 SPACE	0				SPACE	#12 20 1	24 24	
25 25 20 1	#12 SPACE	0				SPACE	#12 20 1	26 26	
27 27 20 1	#12 SPACE	0				SPACE	#12 20 1	28 28	
29 29 20 1	#12 SPACE	0				SPACE	#12 20 1	30 30	
31 31 20 1	#12 SPACE	0				SPACE	#12 20 1	32 32	
33 33 20 1	#12 SPACE	0				SPACE	#12 20 1	34 34	
35 35 20 1	#12 SPACE	0				SPACE	#12 20 1	36 36	
37 37 20 1	#12 SPACE	0				SPACE	#12 20 1	38 38	
39 39 20 1	#12 SPACE	0				SPACE	#12 20 1	40 40	
41 41 20 1	#12 SPACE	0				SPACE	#12 20 1	42 42	

TOTAL CONNECTED LOAD: 0 VA CONTINUOUS, 0 VA LARGEST MOTOR LOAD (LML), 0 VA KITCHEN LOAD (KL), 0 VA CONNECTED LOAD, 0 VA TOTAL N.E.C. COMPUTED LOAD.

BUS B: 0 VA CONTINUOUS, 0 VA LARGEST MOTOR LOAD (LML), 0 VA KITCHEN LOAD (KL), 0 VA CONNECTED LOAD, 0 VA TOTAL N.E.C. COMPUTED LOAD.

BUS C: 0 VA CONTINUOUS, 0 VA LARGEST MOTOR LOAD (LML), 0 VA KITCHEN LOAD (KL), 0 VA CONNECTED LOAD, 0 VA TOTAL N.E.C. COMPUTED LOAD.

TOTAL: 0 VA (0 VA x 0.25) + (0 VA x 0.25) + (0 VA x 0.35) + 0 VA = 0 VA

CALCULATED LOADS PER CHAPTER 2 OF N.E.C. AMPERES @ 277480V, 3 PHASE = 0 AMPS (AVERAGE) AMPERES @ 277480V, 3 PHASE = 0 AMPS (HIGH PHASE)

EXISTING PANEL B 100 AMP FRAME MAIN LUG ONLY
120208V, 3 PHASE, 4 WIRE BRANCH CIR. BOLT-ON SIZE AS INDICATED
42 CIRCUIT, SURFACE MTD. NEMA 1 INTERRUPTING RATING: SEE NOTES

CIRCUIT NO.	SERVICES	LOADS				SERVICES	CIRCUIT NO.	SERVICES	CIRCUIT NO.
		LINE	A	B	C				
1 1 20 1	#12 LIGHTING	1,500	3,360		1,440	RESTROOM	#12 20 1	2 2	
3 3 20 1	#12 LIGHTING	830	2,070		1,440	RESTROOM	#12 20 1	4 4	
5 5 20 1	#12 LIGHTING	820			820	SPACE	#12 20 1	6 6	
7 7 20 1	#12 OFFICE RECEPTACLES	360	360			SPACE	#12 20 1	8 8	
9 9 20 1	#12 OFFICE RECEPTACLES	420	420			SPACE	#12 20 1	10 10	
11 11 20 1	#12 OFFICE RECEPTACLES	1,180	1,180			SPACE	#12 20 1	12 12	
13 13 20 1	#12 SPACE	0				SPACE	#12 20 1	14 14	
15 15 20 1	#12 SPACE	0				SPACE	#12 20 1	16 16	
17 17 20 1	#12 SPACE	0				SPACE	#12 20 1	18 18	
19 19 20 1	#12 SPACE	0				SPACE	#12 20 1	20 20	
21 21 20 1	#12 SPACE	0				SPACE	#12 20 1	22 22	
23 23 20 1	#12 SPACE	0				SPACE	#12 20 1	24 24	
25 25 20 1	#12 SPACE	0				SPACE	#12 20 1	26 26	
27 27 20 1	#12 SPACE	0				SPACE	#12 20 1	28 28	
29 29 20 1	#12 SHOP RECEPTACLE	720	720			SPACE	#12 20 1	30 30	
31 31 20 3	#12 SAND BLASTER	1,140	1,140			SPACE	#12 20 1	32 32	
33 33 20 3	#12 SAND BLASTER	1,140	1,140			SPACE	#12 20 1	34 34	
35 35 20 3	#12 SAND BLASTER	1,140	1,140			SPACE	#12 20 1	36 36	
37 37 20 3	#12 SAND BLASTER	1,140	3,660		2,520	RT 13	#12 20 3	38 38	
39 39 20 3	#12 SAND BLASTER	1,140	3,660		2,520	RT 13	#12 20 3	40 40	
41 41 20 3	#12 SAND BLASTER	1,140	3,660		2,520	RT 13	#12 20 3	42 42	

TOTAL CONNECTED LOAD: 8,520 VA CONTINUOUS, 7,290 VA LARGEST MOTOR LOAD (LML), 7,290 VA KITCHEN LOAD (KL), 0 VA CONNECTED LOAD, 23,330 VA TOTAL N.E.C. COMPUTED LOAD.

BUS A: 8,520 VA CONTINUOUS, 7,290 VA LARGEST MOTOR LOAD (LML), 7,290 VA KITCHEN LOAD (KL), 0 VA CONNECTED LOAD, 23,330 VA TOTAL N.E.C. COMPUTED LOAD.

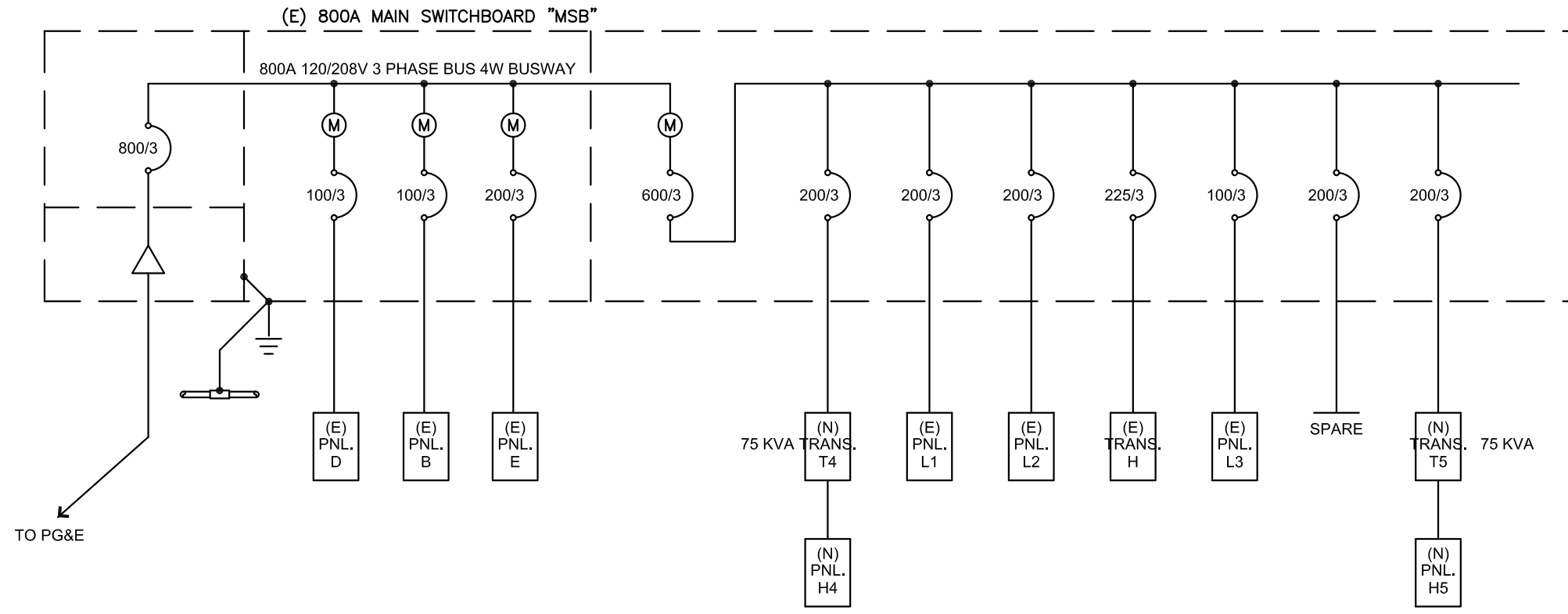
BUS B: 7,290 VA CONTINUOUS, 7,290 VA LARGEST MOTOR LOAD (LML), 7,290 VA KITCHEN LOAD (KL), 0 VA CONNECTED LOAD, 23,330 VA TOTAL N.E.C. COMPUTED LOAD.

BUS C: 7,290 VA CONTINUOUS, 7,290 VA LARGEST MOTOR LOAD (LML), 7,290 VA KITCHEN LOAD (KL), 0 VA CONNECTED LOAD, 23,330 VA TOTAL N.E.C. COMPUTED LOAD.

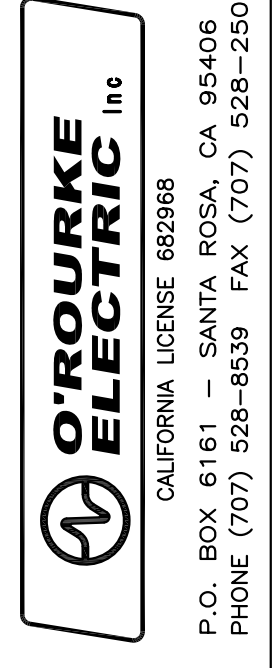
TOTAL: 23,330 VA (0 VA x 0.25) + (2,150 VA x 0.25) + (0 VA x 0.35) + 23,330 VA = 23,868 VA

CALCULATED LOADS PER CHAPTER 2 OF N.E.C. AMPERES @ 120208V, 3 PHASE = 60 AMPS (AVERAGE) AMPERES @ 120208V, 3 PHASE = 72 AMPS (HIGH PHASE)

1 LINE DIAGRAM



David O. Powell



TENANT IMPROVEMENT
1425 - 1435 NORTH DUTTON AVENUE
SANTA ROSA, CALIFORNIA
APN: 036-263-001

PANEL SCHEDULES / LIGHTING
SCHEDULE / 1 LINE DIAGRAM

Date: 06.27.2022
Scale: NONE
Drawn: JJ
Job: 22.09
Sheet: E6.1
Of 5 Sheets