



DISH Wireless L.L.C. SITE ID:
SFSFO00280A

DISH Wireless L.L.C. SITE ADDRESS:
**50 OLD COURTHOUSE SQ.
SANTA ROSA, CA 95404**

City of Santa Rosa
Planning & Economic
Development Department
Feb 23, 2022
RECEIVED

SCOPE OF WORK

THIS IS NOT AN ALL INCLUSIVE LIST. CONTRACTOR SHALL UTILIZE SPECIFIED EQUIPMENT PART OR ENGINEER APPROVED EQUIVALENT. CONTRACTOR SHALL VERIFY ALL NEEDED EQUIPMENT TO PROVIDE A FUNCTIONAL SITE. THE PROJECT GENERALLY CONSISTS OF THE FOLLOWING:

SECTOR SCOPE OF WORK:

- INSTALL (6) PROPOSED PANEL ANTENNAS (2 PER SECTOR)
- INSTALL (6) PROPOSED ANTENNA MOUNTS (2 PER SECTOR)
- INSTALL PROPOSED JUMPERS
- INSTALL (12) PROPOSED RRUs (4 PER SECTOR)
- INSTALL (3) PROPOSED OVER VOLTAGE PROTECTION DEVICE (OVP) (1 PER SECTOR)
- INSTALL (3) PROPOSED POWER AND (3) PROPOSED FIBER TRUNK
- INSTALL PROPOSED CABLE TRAY

ROOFTOP SCOPE OF WORK:

- INSTALL (1) PROPOSED METAL PLATFORM WITH H-FRAME
- INSTALL (1) PROPOSED CABLE LADDER TRAY OR CABLE TRAY
- INSTALL (1) PROPOSED BBU IN CABINET
- INSTALL (1) PROPOSED EQUIPMENT CABINET
- INSTALL (1) PROPOSED POWER CONDUIT
- INSTALL (1) PROPOSED TELCO CONDUIT
- INSTALL (1) PROPOSED NEMA 3 TELCO-FIBER BOX
- INSTALL (1) PROPOSED GPS UNIT

SITE INFORMATION	PROJECT DIRECTORY
PROPERTY OWNER: OLD COURTHOUSE SQUARE LP ADDRESS: 414 AVIATION BLVD. SANTA ROSA, CA 95403	APPLICANT: DISH Wireless L.L.C. 5701 SOUTH SANTA FE DRIVE LITTLETON, CO 80120
TOWER TYPE: ROOFTOP	
COUNTY: SONOMA	SITE DESIGNER: THE CBR GROUP 2840 HOWE ROAD MARTINEZ, CA 94553 (925) 246-3212
LATITUDE (NAD 83): 38.440356	
LONGITUDE (NAD 83): -122.713068	
ZONING JURISDICTION: CITY OF SANTA ROSA	SITE ACQUISITION: CHRISTY BELTRAN (415) 806-2323 christy@thebrgroup.com
ZONING DISTRICT: CMU-DSA; CORE MIXED USE- DOWNTOWN STATION AREA	CONSTRUCTION MANAGER: JAMES GONZALEZ (510) 772-7415 jim@thebrgroup.com
PARCEL NUMBER: 009-013-013-000	
OCCUPANCY GROUP: U	
CONSTRUCTION TYPE: V-B	
POWER COMPANY: PG&E	
TELEPHONE COMPANY: AT&T	



5701 SOUTH SANTA FE DRIVE
LITTLETON, CO 80120



2840 HOWE ROAD, SUITE E
MARTINEZ, CA 94553
www.TheCBRGroup.com

IT IS A VIOLATION OF LAW FOR ANY PERSON, UNLESS THEY ARE ACTING UNDER THE DIRECTION OF A LICENSED PROFESSIONAL ENGINEER, TO ALTER THIS DOCUMENT.

DRAWN BY: JDL/IK	CHECKED BY: ---	APPROVED BY: ---
RFDS REV #: 11/17/2021 REV 3		

ZONING DOCUMENTS

SUBMITTALS		
REV	DATE	DESCRIPTION
A	11/22/2021	90%2D'S ISSUED FOR REVIEW
B	11/29/2021	100% ZONING DRAWINGS

A&E PROJECT NUMBER
SFSFO00280A

DISH Wireless L.L.C.
PROJECT INFORMATION
SFSFO00280A
50 OLD COURTHOUSE SQ.
SANTA ROSA, CA 95404

SHEET TITLE
TITLE SHEET

SHEET NUMBER
T-1

CALIFORNIA CODE OF COMPLIANCE

ALL WORK SHALL BE PERFORMED AND MATERIALS INSTALLED IN ACCORDANCE WITH THE CURRENT EDITIONS OF THE FOLLOWING CODES AS ADOPTED BY THE LOCAL GOVERNING AUTHORITIES. NOTHING IN THESE PLANS IS TO BE CONSTRUED TO PERMIT WORK NOT CONFORMING TO THESE CODES

CODE TYPE	CODE
BUILDING	2019 CALIFORNIA BUILDING CODE (CBC)/2018 IBC
MECHANICAL	2019 CALIFORNIA MECHANICAL CODE (CMC)/2018 UMC
ELECTRICAL	2019 CALIFORNIA ELECTRICAL CODE (CEC)/2020 NEC

SHEET INDEX

SHEET NO.	SHEET TITLE
T-1	TITLE SHEET
A-1	OVERALL SITE PLAN
A-2	ENLARGED BUILDING PLAN
A-3	ANTENNA PLANS AND SCHEDULE
A-4	EXISTING AND PROPOSED NORTHWEST ELEVATIONS
A-5	EXISTING AND PROPOSED SOUTHWEST ELEVATIONS
A-6	EQUIPMENT PLATFORM AND H-FRAME DETAILS



**UNDERGROUND SERVICE ALERT
UTILITY NOTIFICATION CENTER OF CALIFORNIA
(800) 642-2444
WWW.CALIFORNIA811.ORG
CALL 2-14 WORKING DAYS UTILITY NOTIFICATION PRIOR TO CONSTRUCTION**

GENERAL NOTES

THE FACILITY IS UNMANNED AND NOT FOR HUMAN HABITATION. A TECHNICIAN WILL VISIT THE SITE AS REQUIRED FOR ROUTINE MAINTENANCE. THE PROJECT WILL NOT RESULT IN ANY SIGNIFICANT DISTURBANCE OR EFFECT ON DRAINAGE. NO SANITARY SEWER SERVICE, POTABLE WATER, OR TRASH DISPOSAL IS REQUIRED AND NO COMMERCIAL SIGNAGE IS PROPOSED.

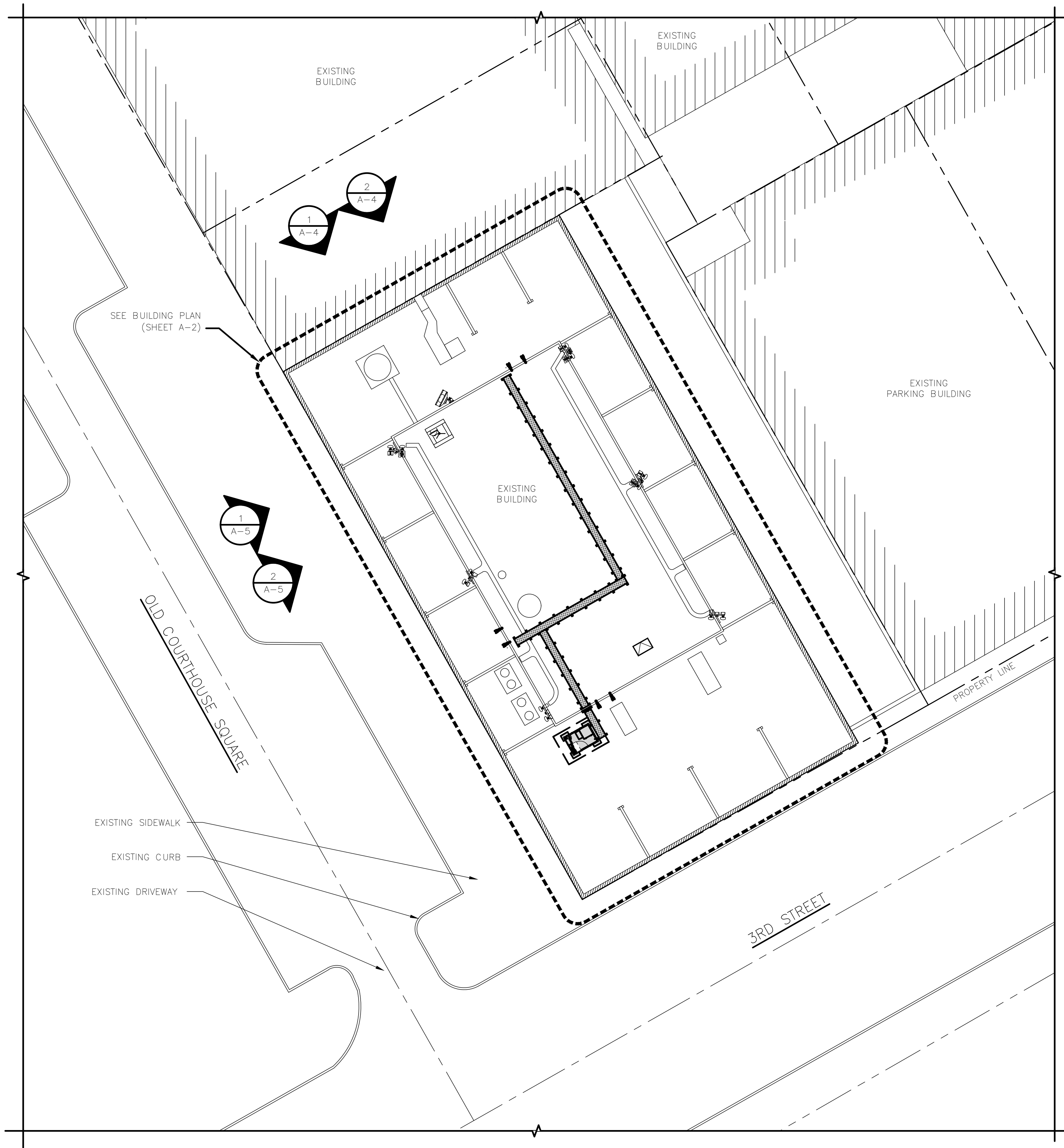
11"x17" PLOT WILL BE HALF SCALE UNLESS OTHERWISE NOTED

CONTRACTOR SHALL VERIFY ALL PLANS, EXISTING DIMENSIONS, AND CONDITIONS ON THE JOB SITE, AND SHALL IMMEDIATELY NOTIFY THE ENGINEER IN WRITING OF ANY DISCREPANCIES BEFORE PROCEEDING WITH THE WORK.

DIRECTIONS

DIRECTIONS FROM SAN FRANCISCO INTERNATIONAL AIRPORT:
HEAD NORTH ON US-101 N, TAKE EXIT 423B FOR I-380 TOWARD SAN BRUNO/I-280, CONTINUE ONTO I-380 W, TAKE EXIT 5A TO MERGE ONTO I-280 N TOWARD SAN FRANCISCO, TAKE EXIT 49-B FOR CA-1 N TOWARD 19TH AVE/GOLDEN GATE BRIDGE, CONTINUE ONTO CA-1 N/JUNIPER SERRA BLVD, TURN LEFT ONTO 19TH AVE, CONTINUE ONTO CROSSOVER DR., CONTINUE ONTO PRESIDIO BYPASS, CONTINUE ONTO PARK PRESIDIO BLVD, CONTINUE ONTO VETERANS BLVD, FOLLOW SIGNS FOR US -101 N/GOLDEN GATE BRIDGE & MERGE ONTO US-101 N, MERGE ONTO US-101 N, KEEP LEFT TO STAY ON US-101N, TAKE EXIT 489 TOWARD DOWNTOWN SANTA ROSA, KEEP RIGHT TO STAY ON EXIT 489, FOLLOW SIGNS FOR THIRD ST./DOWNTOWN, TURN RIGHT ONTO 3RD ST., DESTINATION WILL BE ON THE LEFT.





NOTES

1. CONTRACTOR SHALL FIELD VERIFY ALL DIMENSIONS.
2. CONTRACTOR SHALL MAINTAIN A 10'-0" MINIMUM SEPARATION BETWEEN THE PROPOSED GPS UNIT, TRANSMITTING ANTENNAS AND EXISTING GPS UNITS.
3. PROPOSED WORK IS COMPLIANT WITH 6409(g) ELIGIBILITY FACILITIES REQUEST CRITERIA



5701 SOUTH SANTA FE DRIVE
LITTLETON, CO 80120



2840 HOWE ROAD, SUITE E
MARTINEZ, CA 94553
www.TheCBRGroup.com

IT IS A VIOLATION OF LAW FOR ANY PERSON, UNLESS THEY ARE ACTING UNDER THE DIRECTION OF A LICENSED PROFESSIONAL ENGINEER, TO ALTER THIS DOCUMENT.

DRAWN BY:	CHECKED BY:	APPROVED BY:
JDL/IK	---	---

RFDS REV #: 11/17/2021 REV 3

ZONING DOCUMENTS

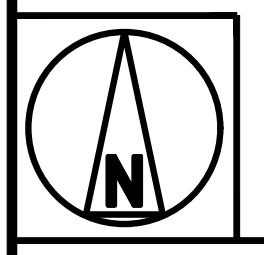
SUBMITTALS		
REV	DATE	DESCRIPTION
A	11/22/2021	90%ZD'S ISSUED FOR REVIEW
B	11/29/2021	100% ZONING DRAWINGS

A&E PROJECT NUMBER
SFSF000280A

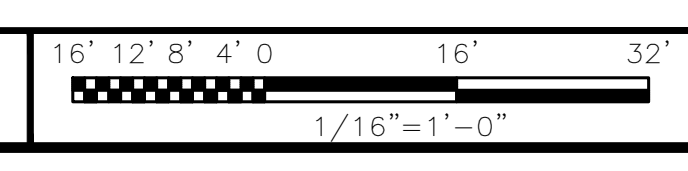
DISH Wireless L.L.C.
PROJECT INFORMATION
SFSF000280A
50 OLD COURTHOUSE SQ.
SANTA ROSA, CA 95404

SHEET TITLE
OVERALL
SITE PLAN

SHEET NUMBER
A-1



OVERALL SITE PLAN



TOTAL AREA FOR CABLE TRAY = 233.2 SQ. FT.

NOTES

1. CONTRACTOR SHALL FIELD VERIFY ALL DIMENSIONS.
2. CONTRACTOR SHALL MAINTAIN A 10'-0" MINIMUM SEPARATION BETWEEN THE PROPOSED GPS UNIT, TRANSMITTING ANTENNAS AND EXISTING GPS UNITS.
3. UTILITY RUBBER MAT TO BE INSTALLED UNDER ALL DISH Wireless L.L.C. EQUIPMENT THAT IS RESTING ON OR AFFIXED TO ROOF MEMBRANE



5701 SOUTH SANTA FE DRIVE
LITTLETON, CO 80120



2840 HOWE ROAD, SUITE E
MARTINEZ, CA 94553
www.TheCBRGroup.com

IT IS A VIOLATION OF LAW FOR ANY PERSON, UNLESS THEY ARE ACTING UNDER THE DIRECTION OF A LICENSED PROFESSIONAL ENGINEER, TO ALTER THIS DOCUMENT.

DRAWN BY: CHECKED BY: APPROVED BY:
JDL/IK --- ---

RFDS REV #: 11/17/2021 REV 3

ZONING DOCUMENTS

SUBMITTALS		
REV	DATE	DESCRIPTION
A	11/22/2021	90%ZD'S ISSUED FOR REVIEW
B	11/29/2021	100% ZONING DRAWINGS

A&E PROJECT NUMBER
SFSF000280A

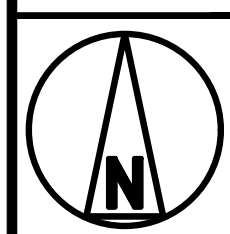
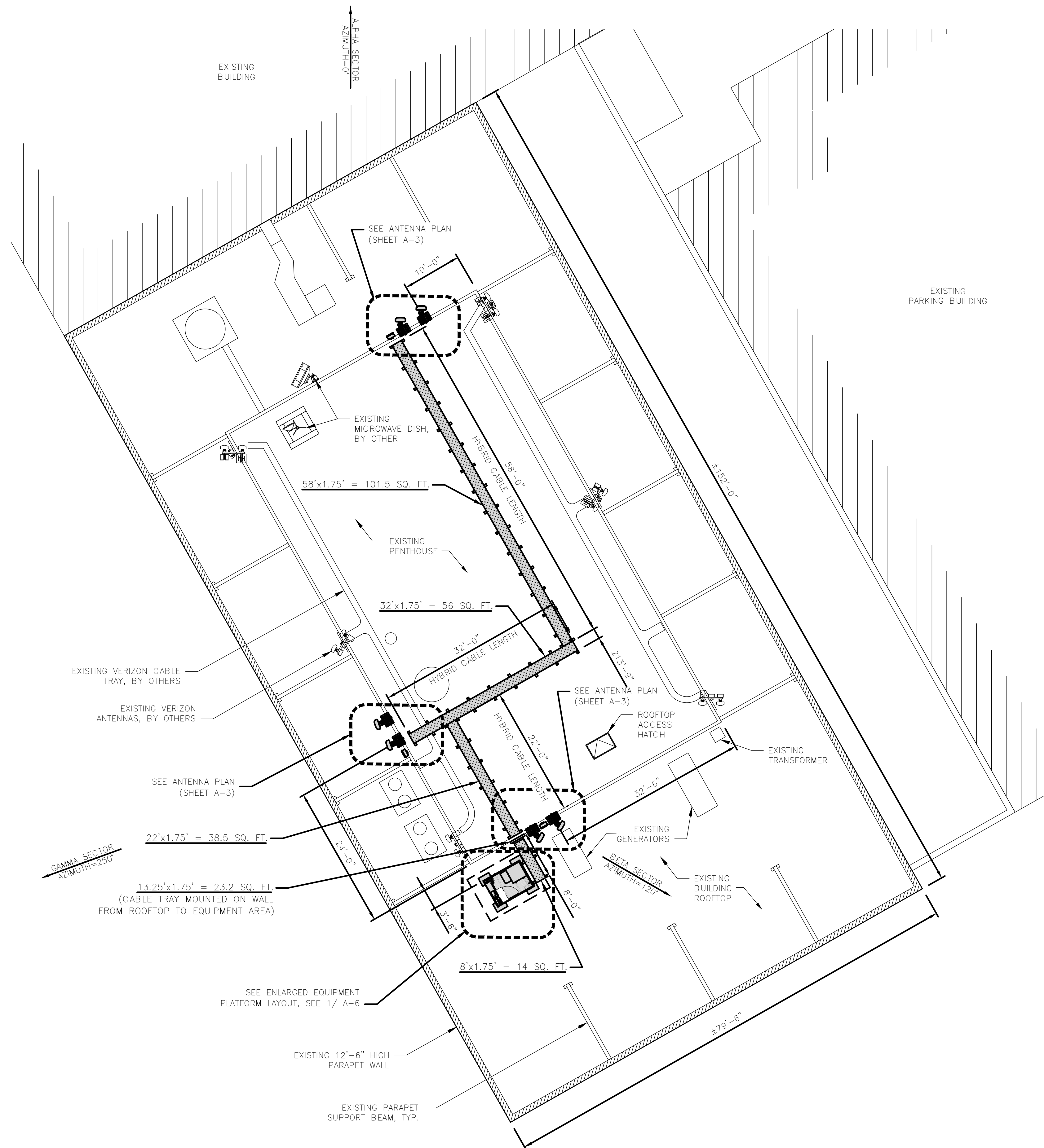
DISH Wireless L.L.C.
PROJECT INFORMATION

SFSF000280A
50 OLD COURTHOUSE SQ.
SANTA ROSA, CA 95404

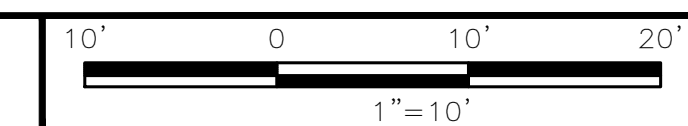
SHEET TITLE
ENLARGED BUILDING
PLAN

SHEET NUMBER

A-2



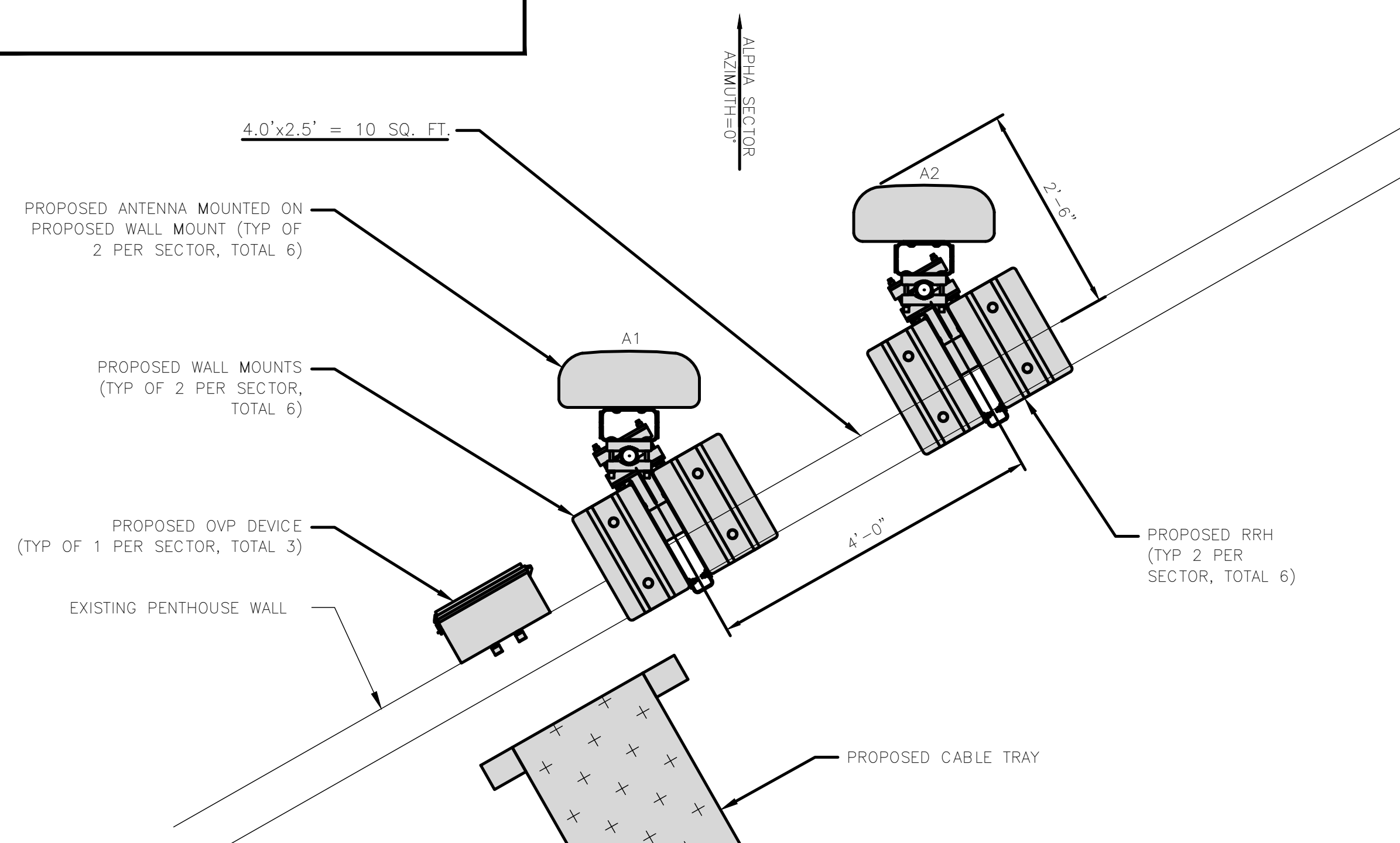
ENLARGED BUILDING PLAN



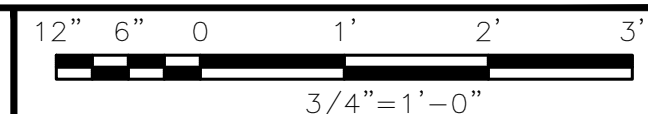
NOTES

1. CONTRACTOR SHALL FIELD VERIFY ALL DIMENSIONS.
2. ANTENNA SPECIFICATIONS REFER TO ANTENNA SCHEDULE AND TO FINAL CONSTRUCTION RFDS FOR ALL RF DETAILS

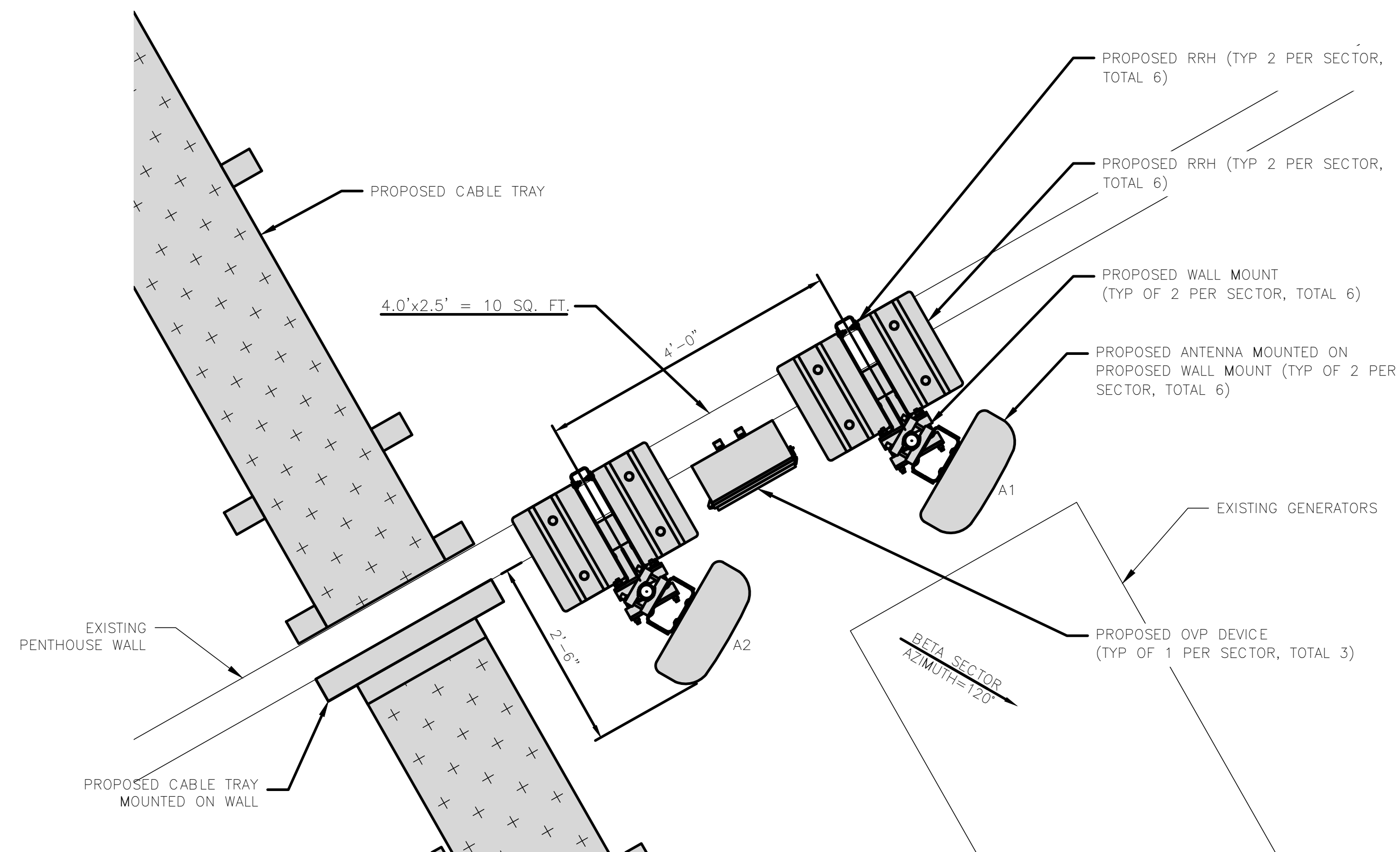
TOTAL AREA FOR ANTENNAS = 29.6 SQ. FT.



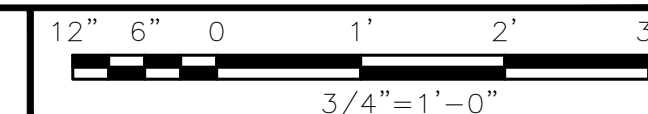
ANTENNA PLAN – ALPHA SECTOR



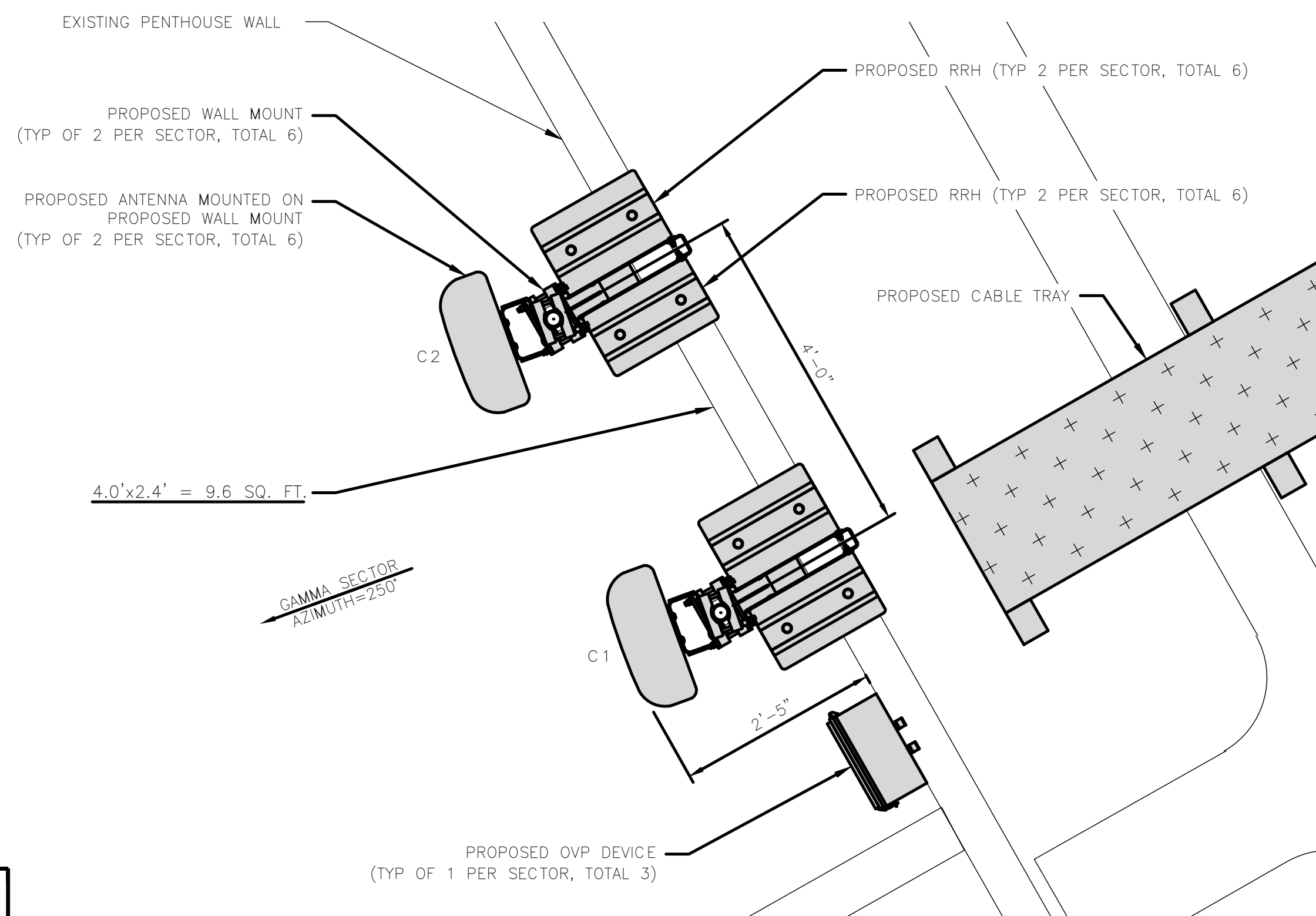
1



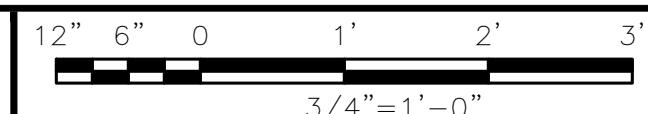
ANTENNA PLAN – BETA SECTOR



2



ANTENNA PLAN – GAMMA SECTORS



3

SECTOR	POSITION	ANTENNA						TRANSMISSION CABLE	
		EXISTING OR PROPOSED	MANUFACTURER – MODEL NUMBER	TECHNOLOGY	SIZE (HxWxD)	AZIMUTH	RAD CENTER	FEED LINE TYPE AND LENGTH	
ALPHA	A1	PROPOSED	ANTENNA – FUTURE/TBD	–	–	0°	107'	POWER LINE (140') FIBER LINE (140')	
	A2	PROPOSED	ANTENNA – FUTURE/TBD	–	–	0°	107'		
BETA	B1	PROPOSED	ANTENNA – FUTURE/TBD	–	–	120°	107'	POWER LINE (140') FIBER LINE (140')	
	B2	PROPOSED	ANTENNA – FUTURE/TBD	–	–	120°	107'		
GAMMA	G1	PROPOSED	ANTENNA – FUTURE/TBD	–	–	250°	107'	POWER LINE (140') FIBER LINE (140')	
	G2	PROPOSED	ANTENNA – FUTURE/TBD	–	–	250°	107'		
SECTOR	POSITION	RRH			NOTES				
		MANUFACTURER – MODEL NUMBER	TECHNOLOGY	SIZE (HxWxD)	1. CONTRACTOR TO REFER TO FINAL CONSTRUCTION RFDS FOR ALL RF DETAILS. 2. ANTENNA AND RRH MODELS MAY CHANGE DUE TO EQUIPMENT AVAILABILITY. ALL EQUIPMENT CHANGES MUST BE APPROVED AND REMAIN IN COMPLIANCE WITH THE PROPOSED DESIGN AND STRUCTURAL ANALYSES.				
ALPHA	A1	RADIO – FUTURE/TBD	–	–					
	A2	RADIO – FUTURE/TBD	–	–					
BETA	B1	RADIO – FUTURE/TBD	–	–					
	B2	RADIO – FUTURE/TBD	–	–					
GAMMA	G1	RADIO – FUTURE/TBD	–	–					
	G2	RADIO – FUTURE/TBD	–	–					

ANTENNA SCHEDULE

NO SCALE

4



5701 SOUTH SANTA FE DRIVE
LITTLETON, CO 80120



2840 HOWE ROAD, SUITE E
MARTINEZ, CA 94553
www.TheCBRGroup.com

IT IS A VIOLATION OF LAW FOR ANY PERSON, UNLESS THEY ARE ACTING UNDER THE DIRECTION OF A LICENSED PROFESSIONAL ENGINEER, TO ALTER THIS DOCUMENT.

DRAWN BY: JDL/IK
CHECKED BY: ---
APPROVED BY: ---

RFDS REV #: 11/17/2021 REV 3

ZONING DOCUMENTS

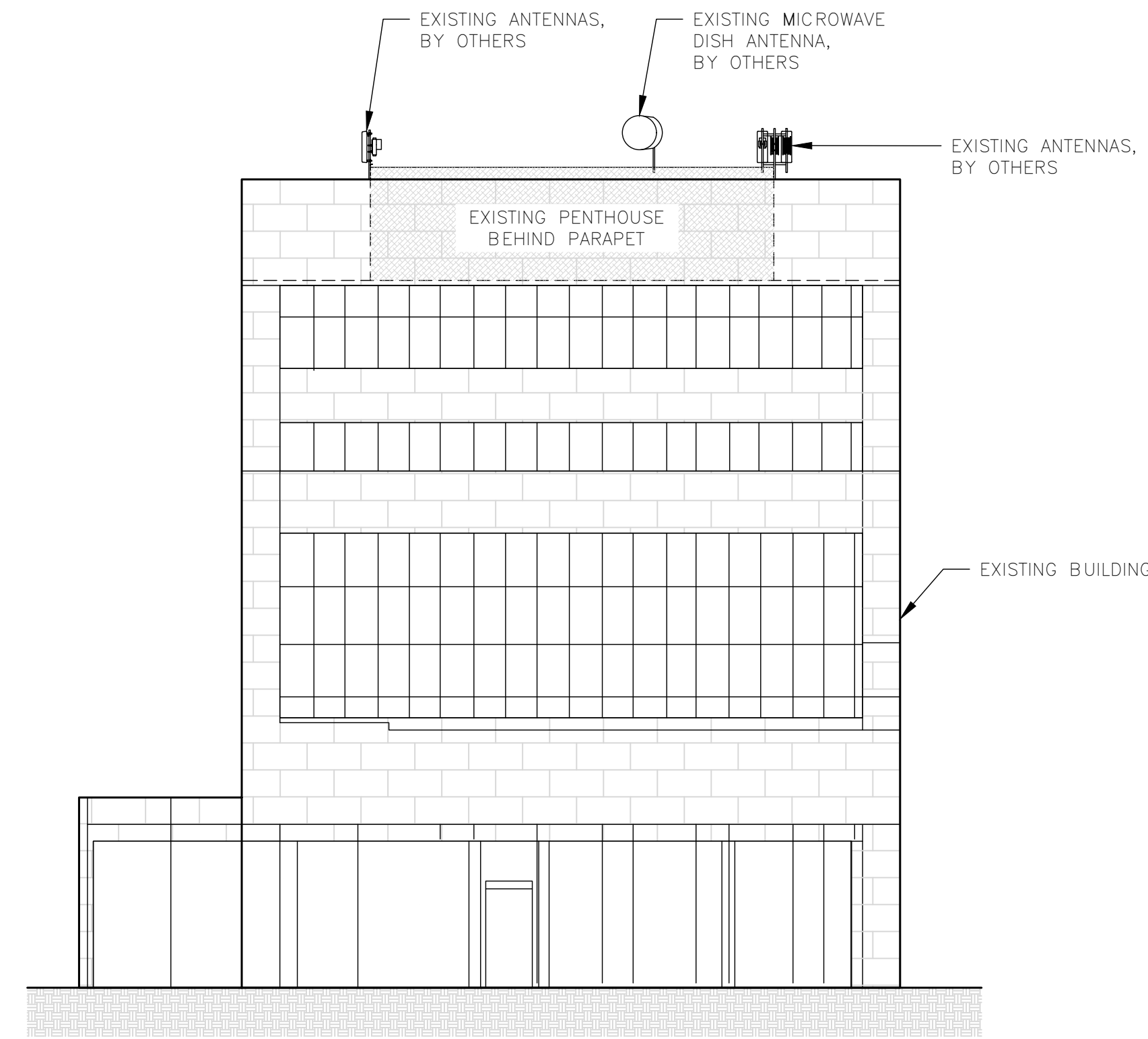
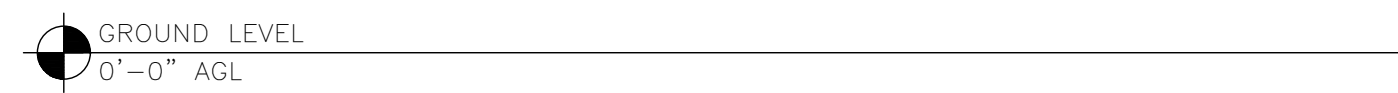
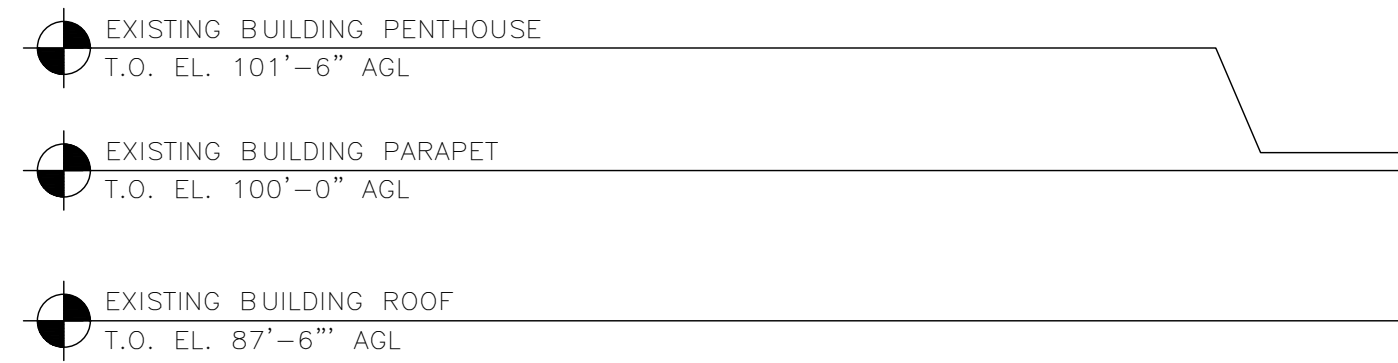
SUBMITTALS		
REV	DATE	DESCRIPTION
A	11/22/2021	90%ZD'S ISSUED FOR REVIEW
B	11/29/2021	100% ZONING DRAWINGS

A&E PROJECT NUMBER
SFSF000280A

DISH Wireless L.L.C.
PROJECT INFORMATION
SFSF000280A
50 OLD COURTHOUSE SQ.
SANTA ROSA, CA 95404

SHEET TITLE
ANTENNA PLANS
AND SCHEDULE

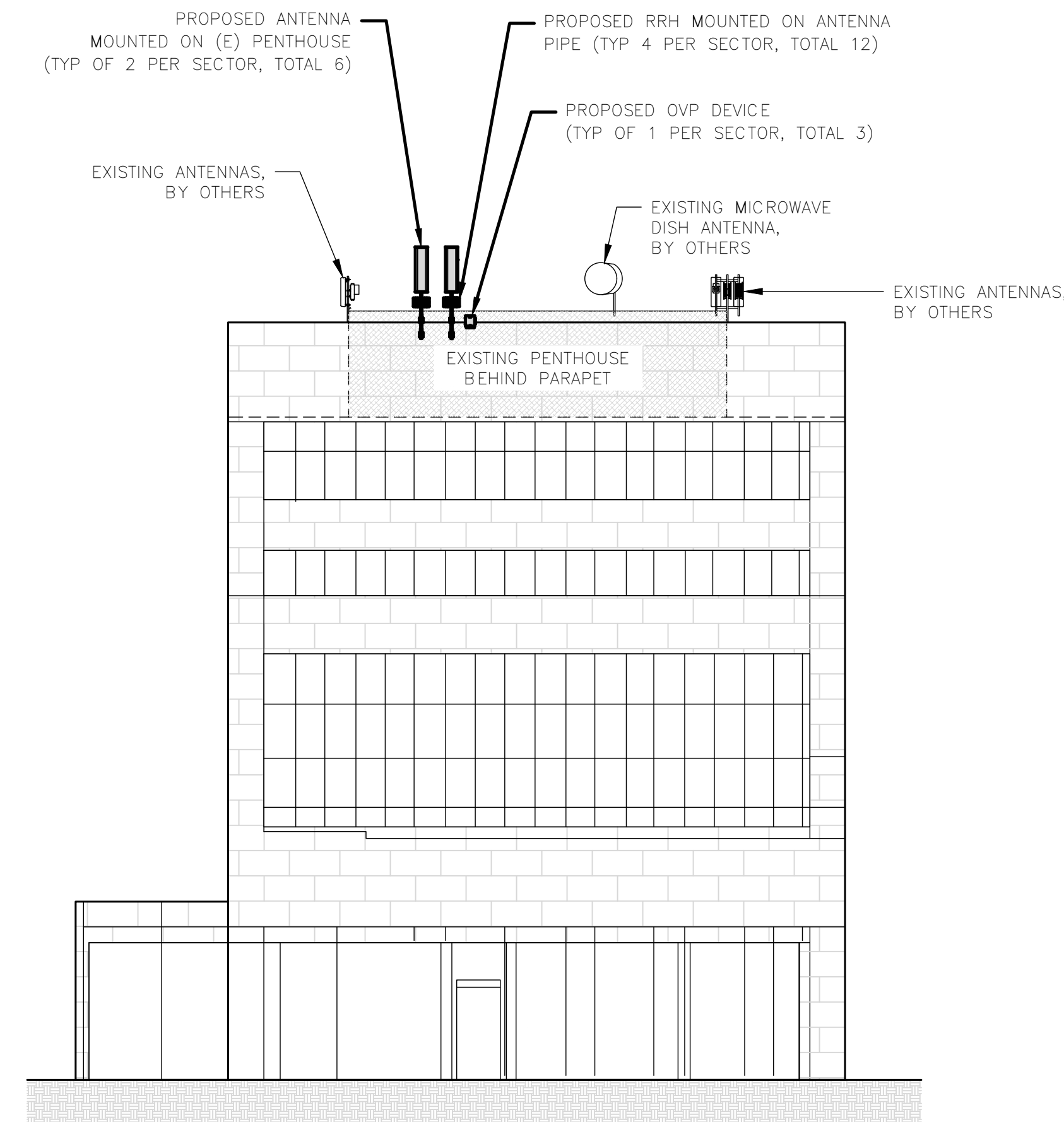
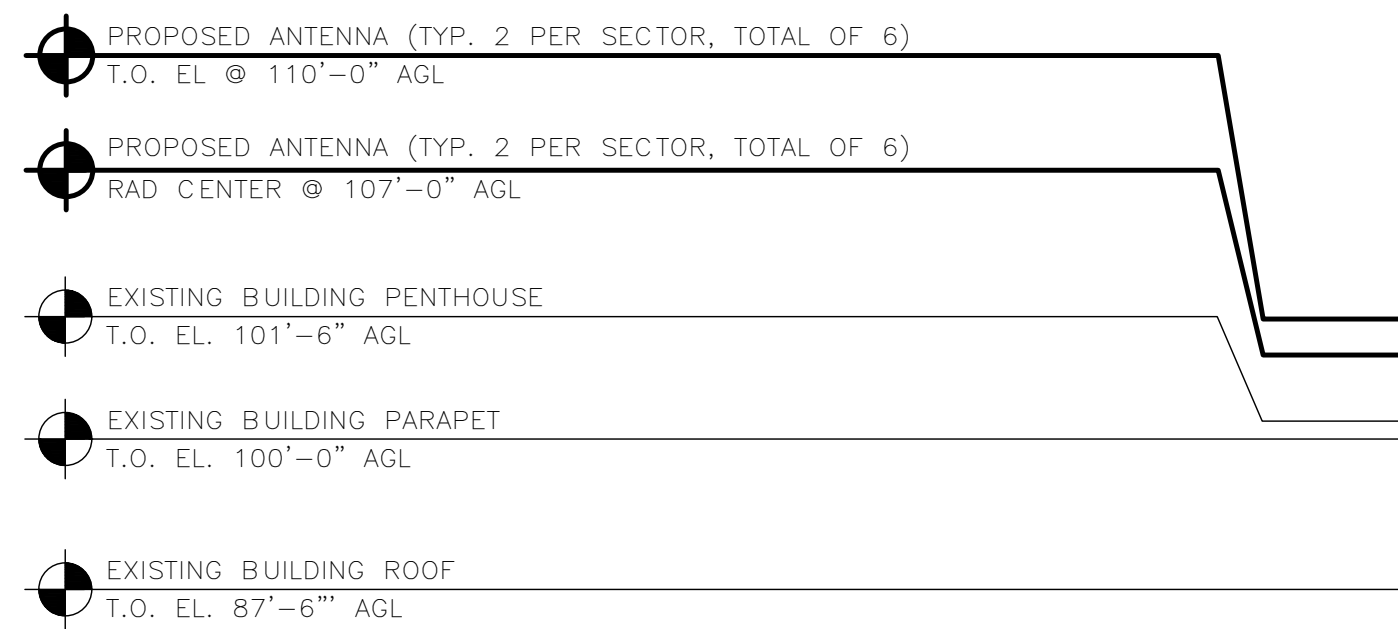
SHEET NUMBER
A-3



EXISTING NORTHWEST ELEVATION



1



PROPOSED NORTHWEST ELEVATION

NOTES

- CONTRACTOR SHALL FIELD VERIFY ALL DIMENSIONS.
- CONTRACTOR SHALL MAINTAIN A 10'-0" MINIMUM SEPARATION BETWEEN THE PROPOSED GPS UNIT, TRANSMITTING ANTENNAS AND EXISTING GPS UNITS.



2



5701 SOUTH SANTA FE DRIVE
LITTLETON, CO 80120



2840 HOWE ROAD, SUITE E
MARTINEZ, CA 94553
www.TheCBRGroup.com

IT IS A VIOLATION OF LAW FOR ANY PERSON, UNLESS THEY ARE ACTING UNDER THE DIRECTION OF A LICENSED PROFESSIONAL ENGINEER, TO ALTER THIS DOCUMENT.

DRAWN BY: JDL/IK
CHECKED BY: ---
APPROVED BY: ---

RFDS REV #: 11/17/2021 REV 3

ZONING DOCUMENTS

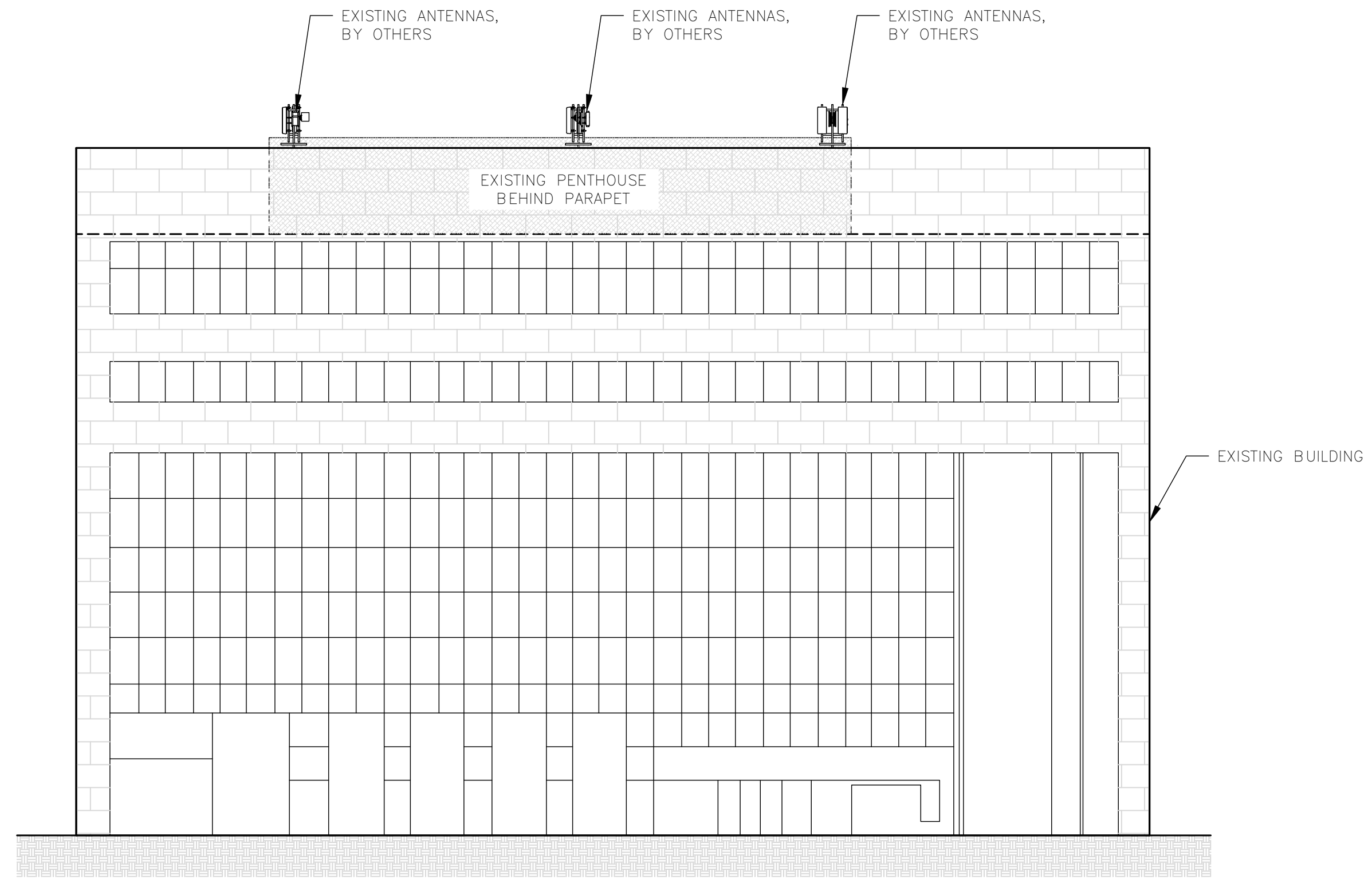
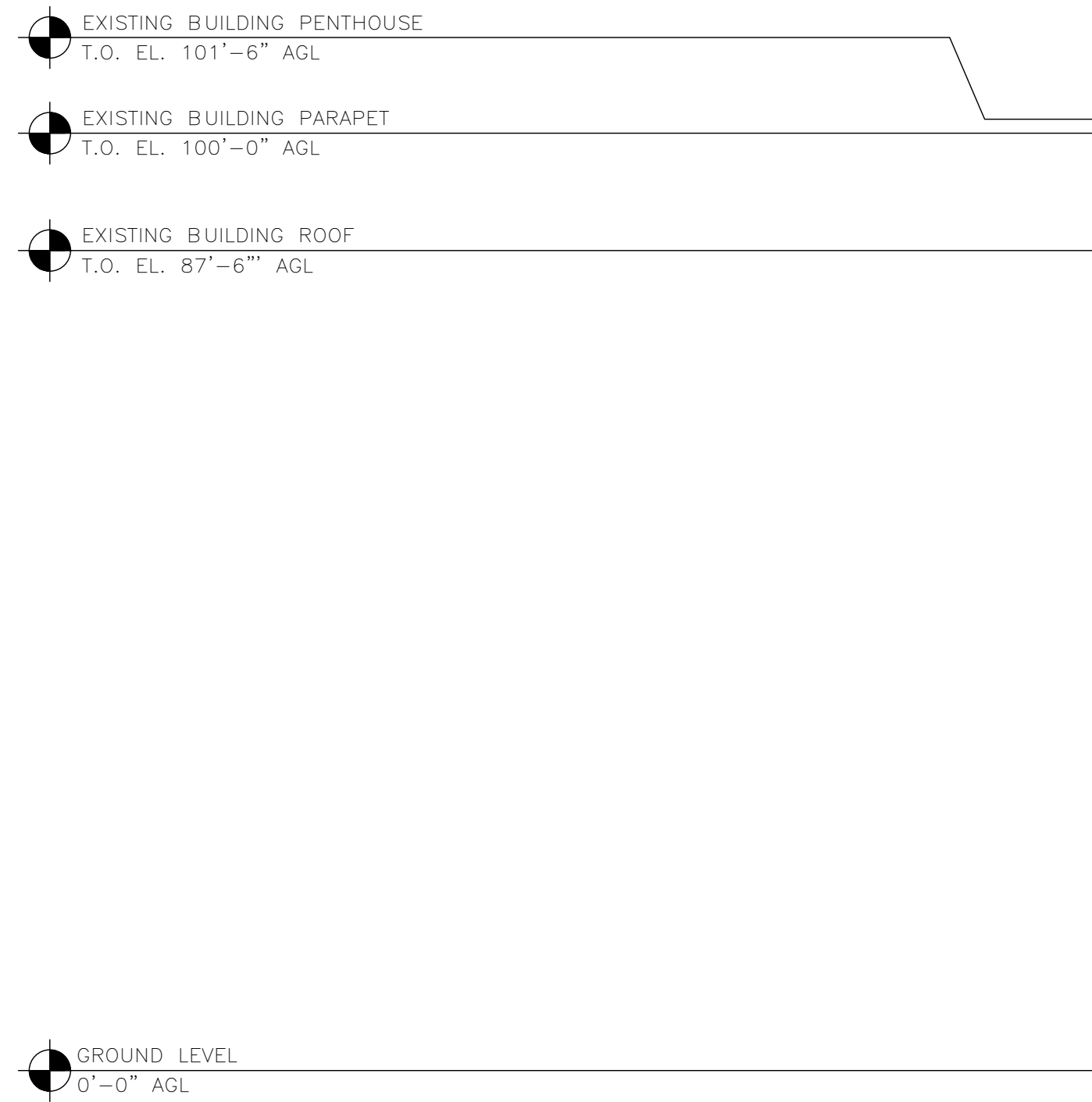
SUBMITTALS		
REV	DATE	DESCRIPTION
A	11/22/2021	90%ZD'S ISSUED FOR REVIEW
B	11/29/2021	100% ZONING DRAWINGS

A&E PROJECT NUMBER
SFSF000280A

DISH Wireless L.L.C.
PROJECT INFORMATION
SFSF000280A
50 OLD COURTHOUSE SQ.
SANTA ROSA, CA 95404

SHEET TITLE
NORTHWEST ELEVATIONS

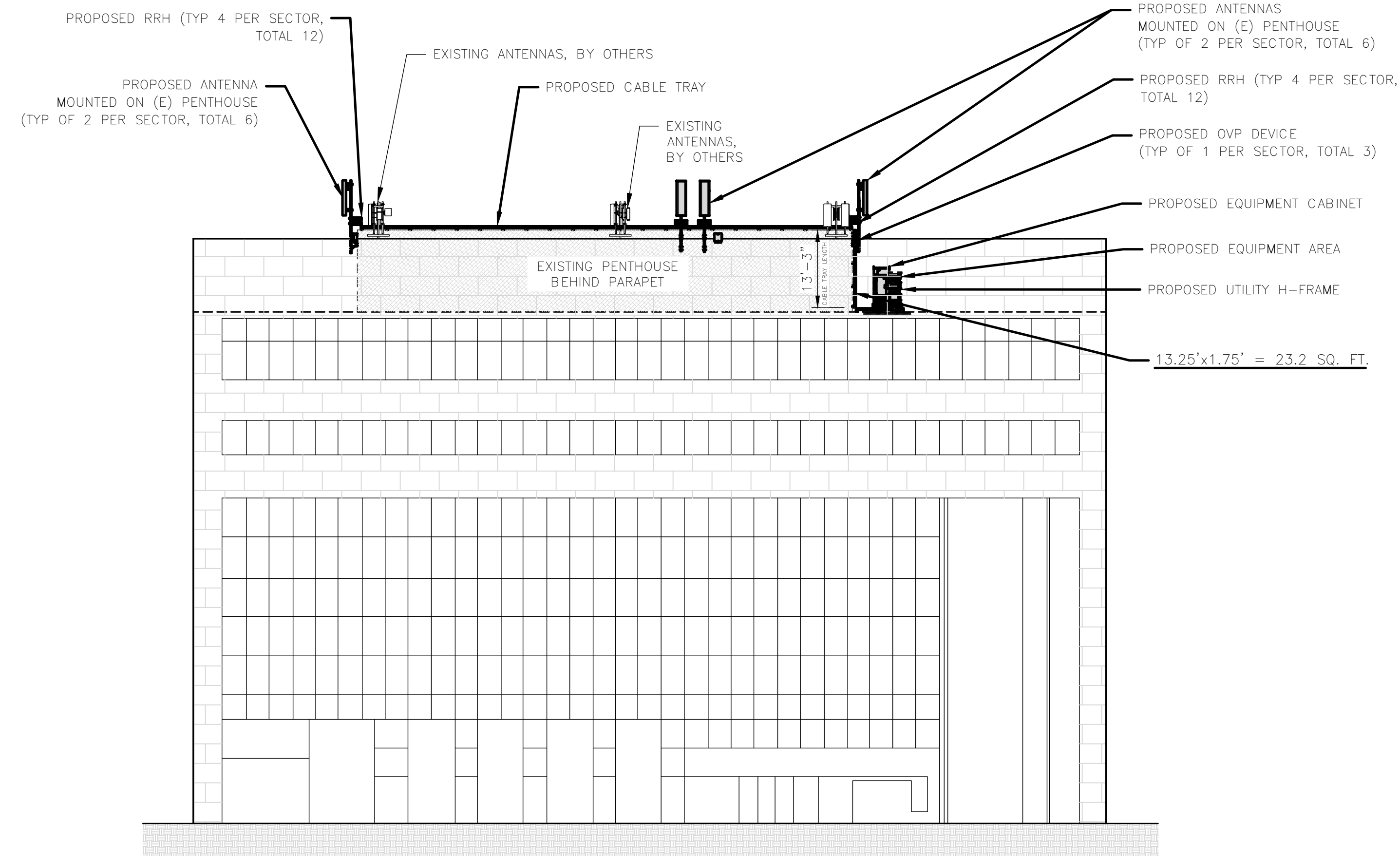
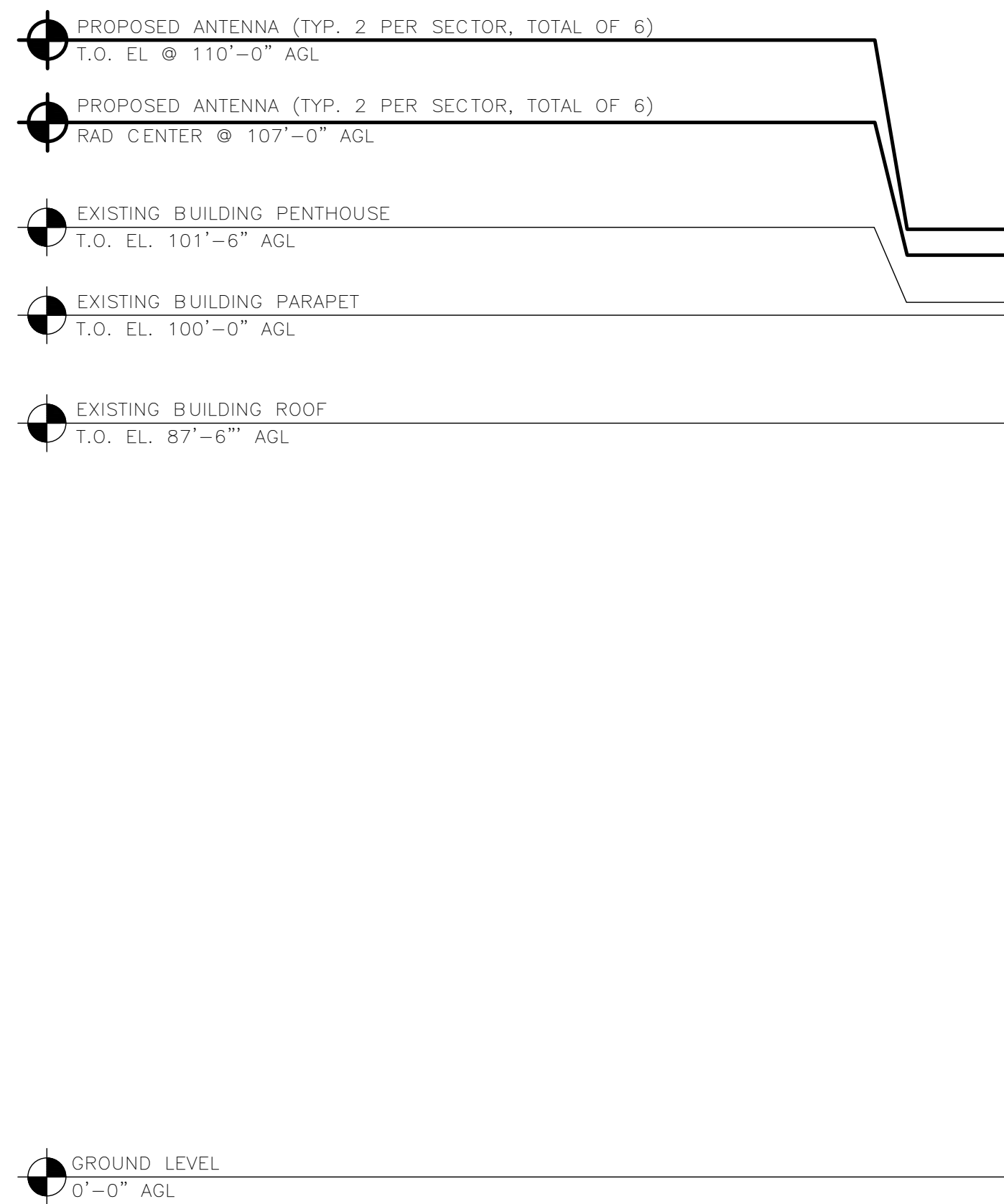
SHEET NUMBER
A-4



EXISTING SOUTHWEST ELEVATION



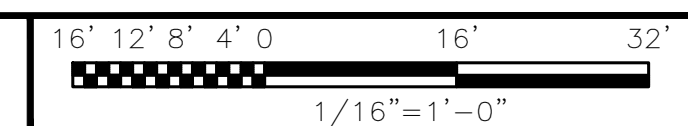
1



NOTES

1. CONTRACTOR SHALL FIELD VERIFY ALL DIMENSIONS.
2. CONTRACTOR SHALL MAINTAIN A 10'-0" MINIMUM SEPARATION BETWEEN THE PROPOSED GPS UNIT, TRANSMITTING ANTENNAS AND EXISTING GPS UNITS.

PROPOSED SOUTHWEST ELEVATION



2



5701 SOUTH SANTA FE DRIVE
LITTLETON, CO 80120



2840 HOWE ROAD, SUITE E
MARTINEZ, CA 94553
www.TheCBRGroup.com

IT IS A VIOLATION OF LAW FOR ANY PERSON, UNLESS THEY ARE ACTING UNDER THE DIRECTION OF A LICENSED PROFESSIONAL ENGINEER, TO ALTER THIS DOCUMENT.

DRAWN BY: CHECKED BY: APPROVED BY:
JDL/IK --- ---

RFDS REV #: 11/17/2021 REV 3

ZONING DOCUMENTS

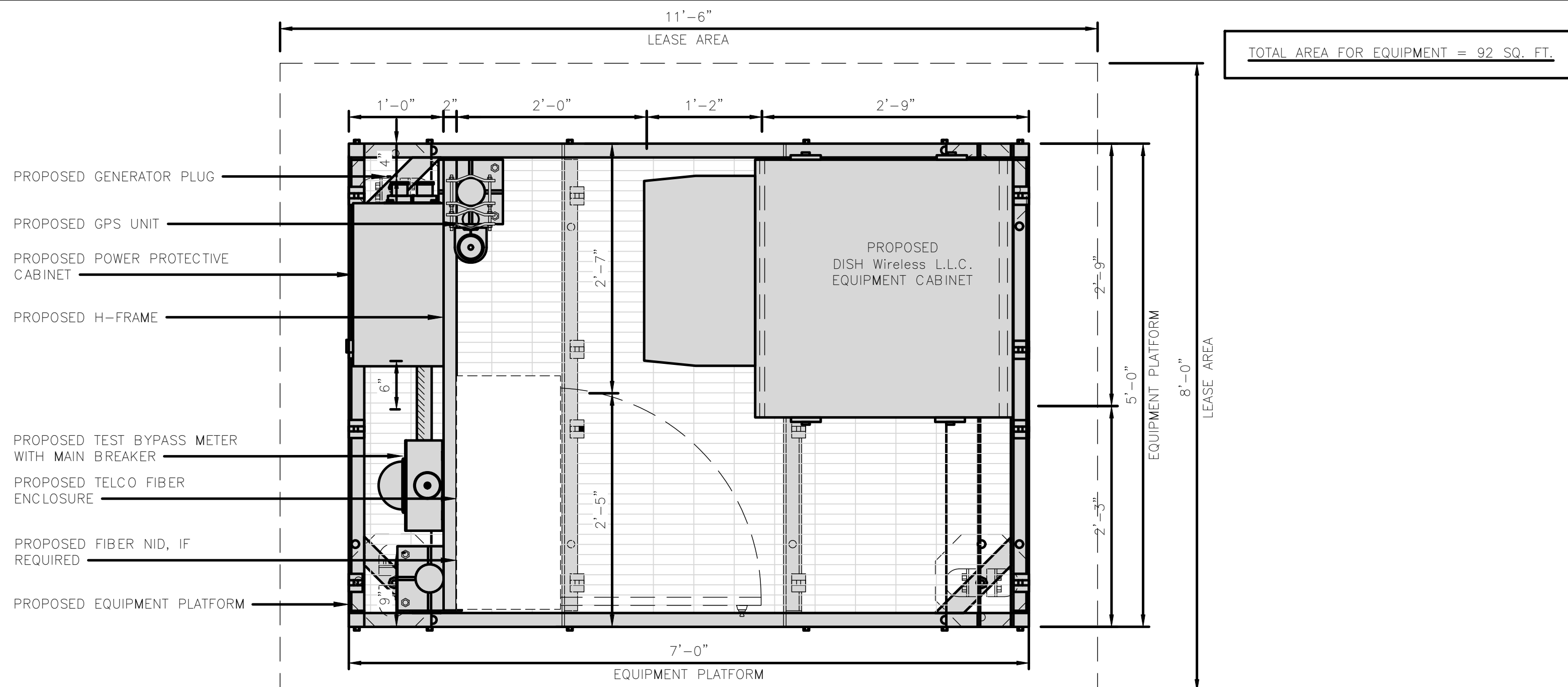
SUBMITTALS		
REV	DATE	DESCRIPTION
A	11/22/2021	90%ZD'S ISSUED FOR REVIEW
B	11/29/2021	100% ZONING DRAWINGS

A&E PROJECT NUMBER
SFSF000280A

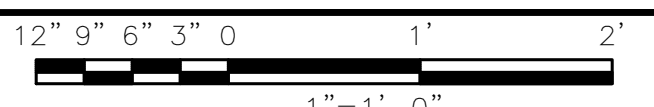
DISH Wireless L.L.C.
PROJECT INFORMATION
SFSF000280A
50 OLD COURTHOUSE SQ.
SANTA ROSA, CA 95404

SHEET TITLE
SOUTHWEST ELEVATIONS

SHEET NUMBER
A-5



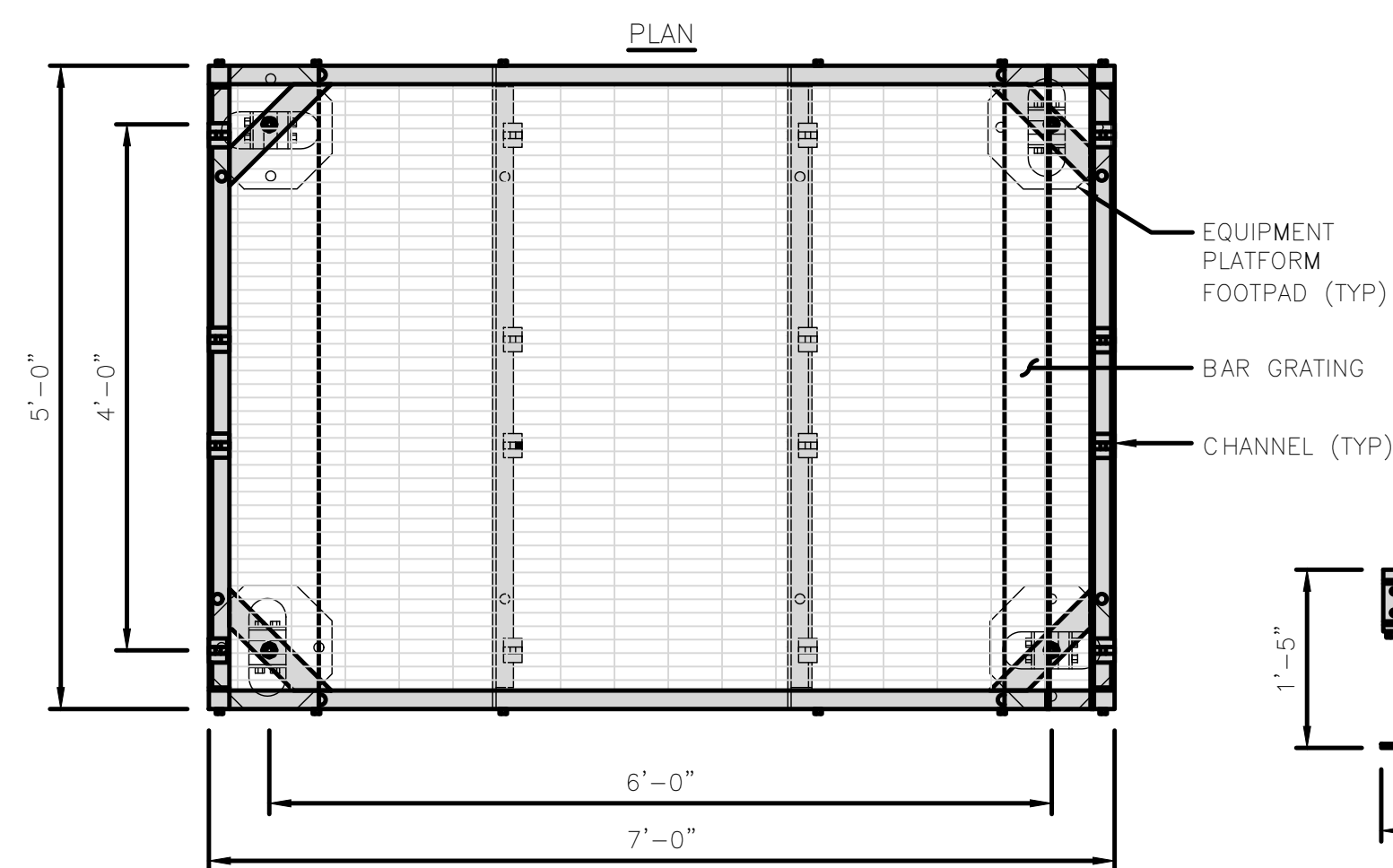
PLATFORM EQUIPMENT PLAN



1

COMMSCOPE MTC4045LP 5X7 PLATFORM	
DIMENSIONS (HxWxD)	16"x84"x60"
TOTAL WEIGHT	423 LBS

NOTE:
GC TO PROVIDE EXTENDED
THREAD FOR PLATFORM IF
REQUIRED HEIGHT EXCEEDS 17"



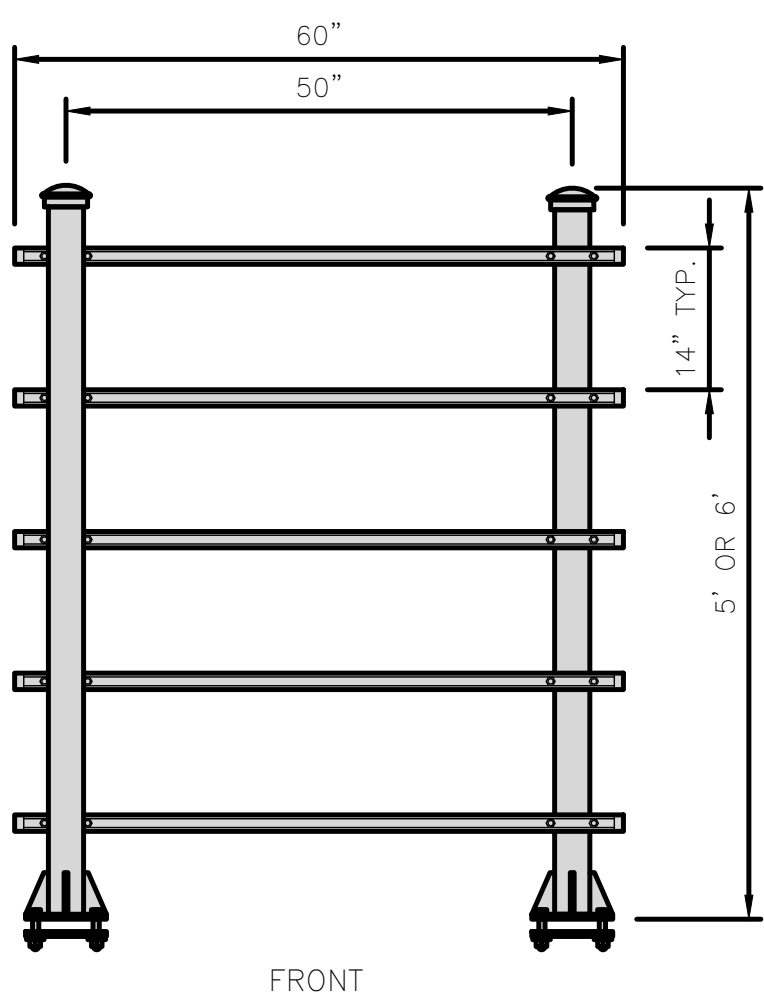
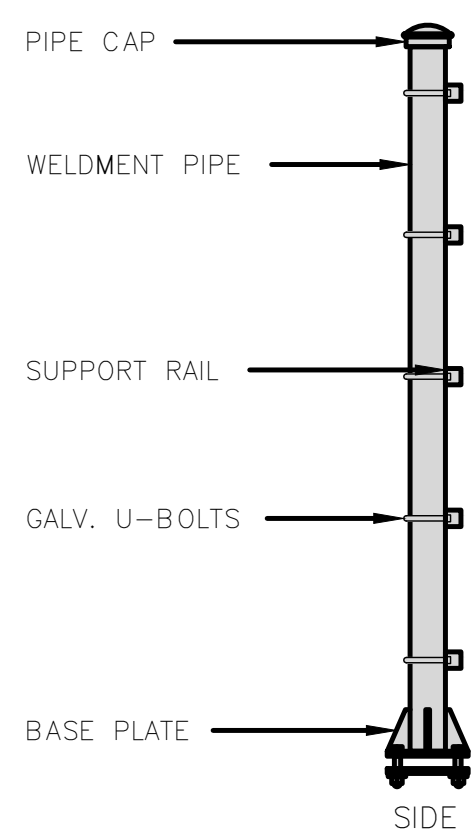
PLATFORM DETAIL

NO SCALE

2

COMMSCOPE MTC4045HFLD H-FRAME	
UNISTRUT/SUPPORT RAILS QTY	5
WEIGHT	59.74 lbs

NOTE:
OR DISH Wireless L.L.C.
APPROVED EQUIVALENT



H-FRAME DETAIL

NO SCALE

3

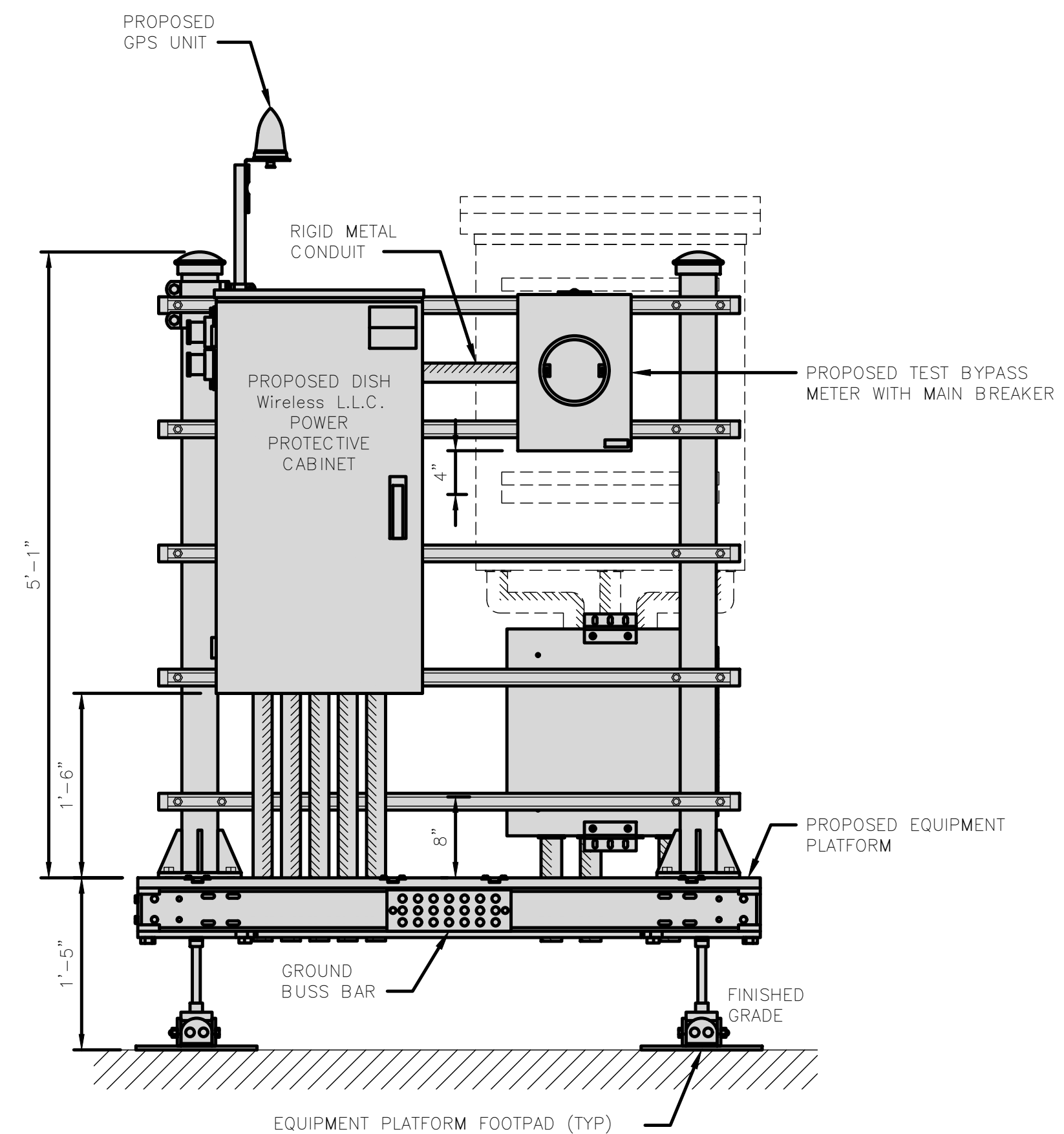
NOT USED

NO SCALE

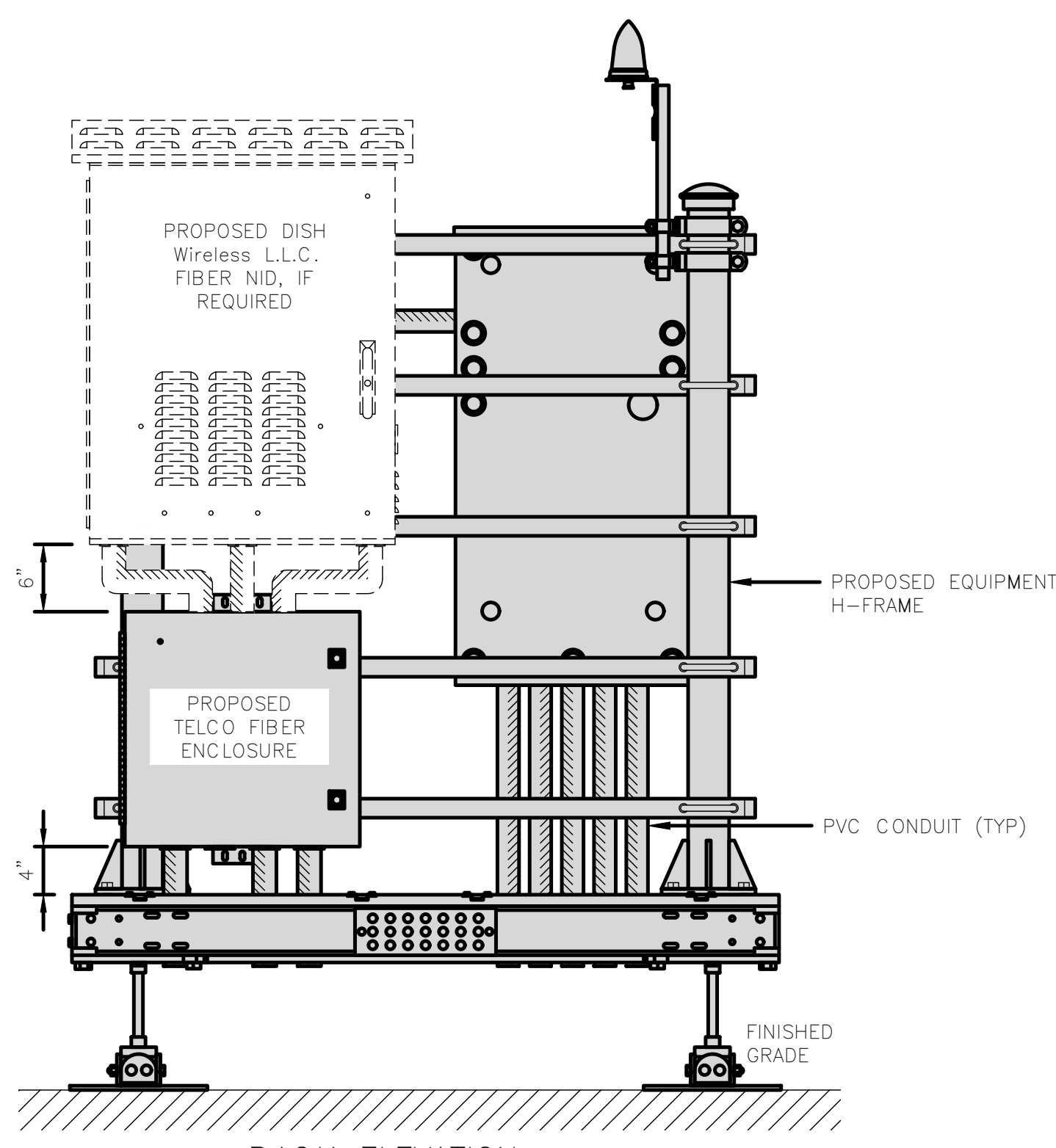
4

NOTE

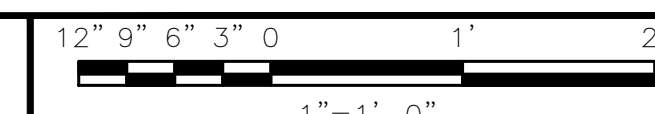
1. EQUIPMENT CABINET OMITTED FOR CLARITY



FRONT ELEVATION



BACK ELEVATION



5

dish
wireless.

5701 SOUTH SANTA FE DRIVE
LITTLETON, CO 80120

THE CBR GROUP

2840 HOWE ROAD, SUITE E
MARTINEZ, CA 94553
www.TheCBRGroup.com

IT IS A VIOLATION OF LAW FOR ANY PERSON,
UNLESS THEY ARE ACTING UNDER THE DIRECTION
OF A LICENSED PROFESSIONAL ENGINEER,
TO ALTER THIS DOCUMENT.

DRAWN BY: CHECKED BY: APPROVED BY:

JDL/IK --- ---

RFDS REV #: 11/17/2021 REV 3

ZONING
DOCUMENTS

SUBMITTALS		
REV	DATE	DESCRIPTION
A	11/22/2021	90%ZD'S ISSUED FOR REVIEW
B	11/29/2021	100% ZONING DRAWINGS

A&E PROJECT NUMBER
SFSF000280A

DISH Wireless L.L.C.
PROJECT INFORMATION

SFSF000280A
50 OLD COURTHOUSE SQ.
SANTA ROSA, CA 95404

SHEET TITLE
EQUIPMENT PLATFORM AND
H-FRAME DETAILS

SHEET NUMBER

A-6