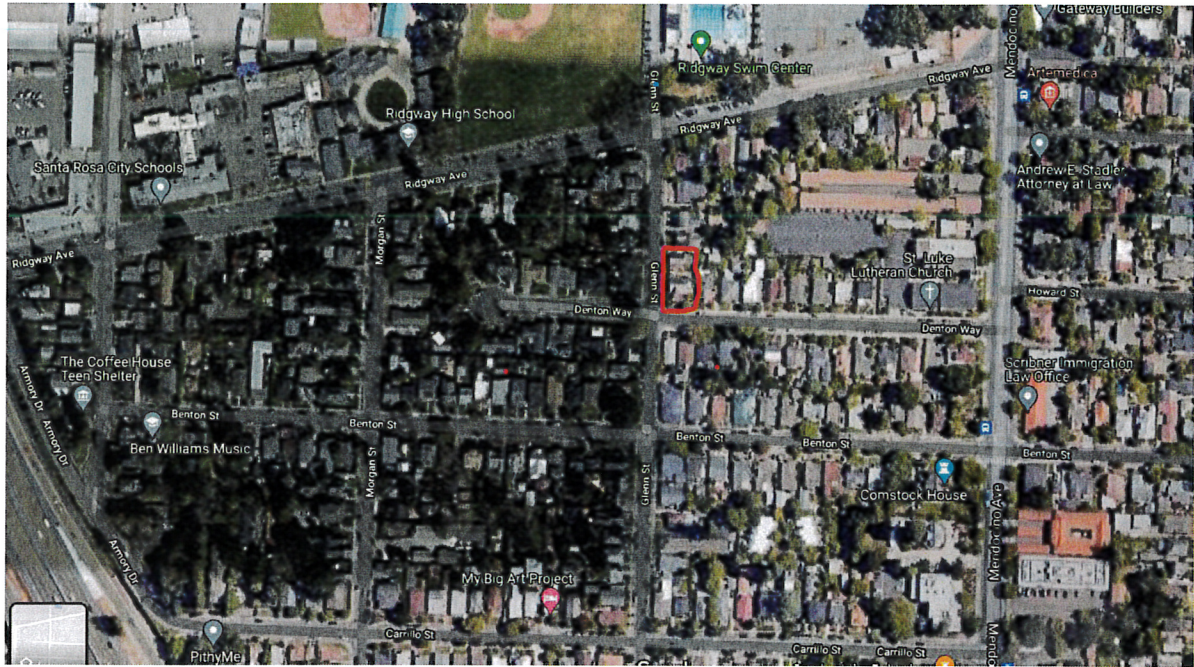


Google Imagery - Neighborhood Context Map 3



Google Imagery



Parcel Map, Ridgway Historic District, Neighborhood Context Map 1

COUNTY ASSESSOR'S PARCEL MAP

7A

NOTE: This map was prepared for Assessment purposes only and does not indicate either parcel legality or a valid building site. No liability is assumed for the accuracy of the data delineated. The acreages are based on the information supplied to the Assessor (i.e. recorded survey maps, recorded deeds, prior assessment maps, etc.)

NOTE: Assessor's parcels do not necessarily constitute legal lots. To verify legal parcel status, check with the appropriate city or county community development or planning division.

SEQUOIA GREEN TOWNHOMES
 REC. 11-01-2007 IN BK. 715, MAPS, PGS. 4-7

This map shall be being furnished as an aid to locating the herein described land or portions thereof. It is not intended to be a substitute for a title search or other legal investigation. The Assessor's office is not responsible for any errors or omissions in this map. The Assessor's office is not a law firm and does not provide legal advice. The Assessor's office is not responsible for any errors or omissions in this map. The Assessor's office is not a law firm and does not provide legal advice.

