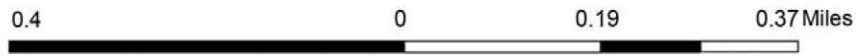
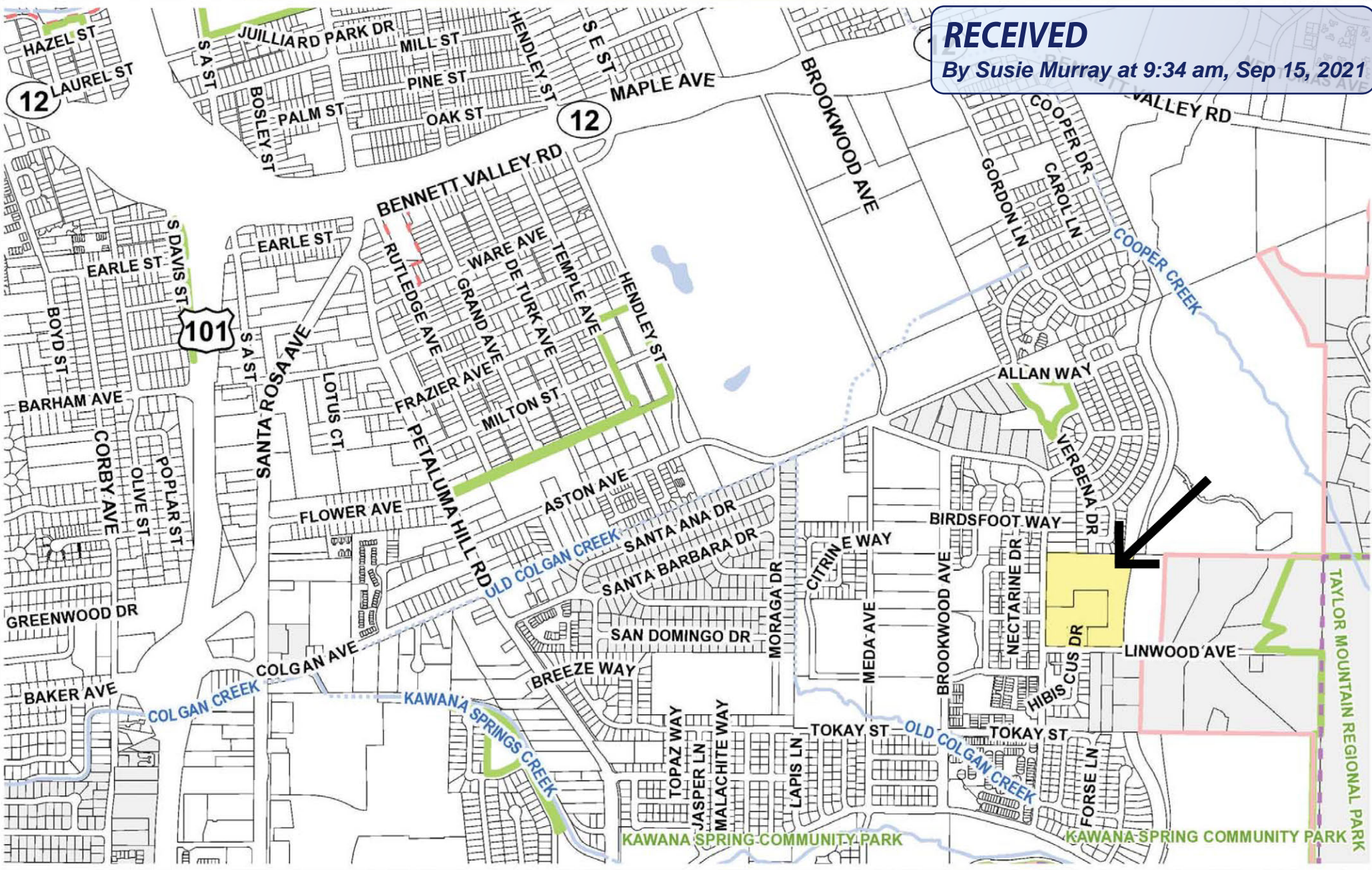


**RECEIVED**  
By Susie Murray at 9:34 am, Sep 15, 2021

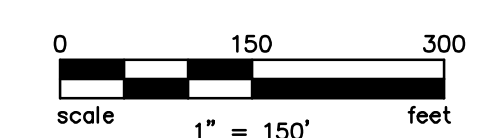
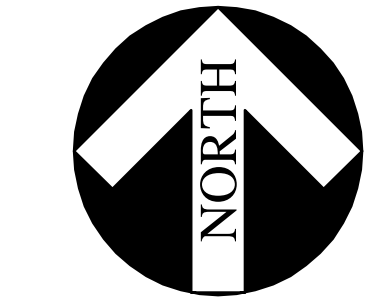
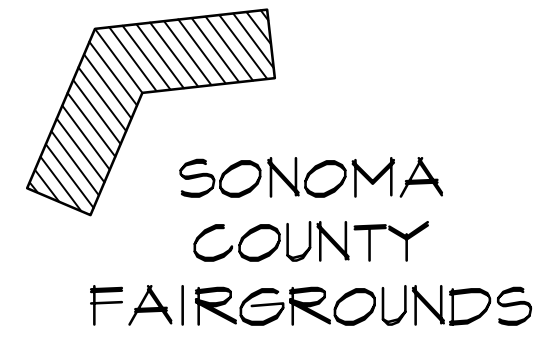


1: 11,848

2/25/2016

This map is a user generated static output from an Internet mapping site and is for reference only. Data layers that appear on this map may or may not be accurate, current, or otherwise reliable.

THIS MAP IS NOT TO BE USED FOR NAVIGATION



# NEIGHBORHOOD CONTEXT MAP PENSTEMON PLACE

SANTA ROSA, CALIFORNIA

DECEMBER 8, 2016

PREPARED BY:



CIVIL ENGINEERS • URBAN PLANNERS • LAND SURVEYORS • LANDSCAPE ARCHITECTS

15 THIRD STREET, SANTA ROSA, CA 95401  
TEL (707) 542-6451 FAX (707) 542-5212

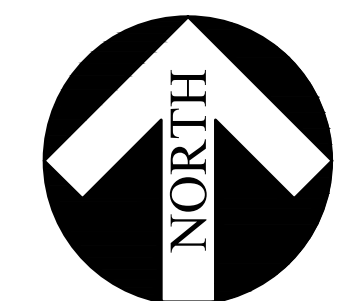
PROJECT No. 201603.00

SHEET 1 OF 1

12/7/2016 11:19:37 AM Brian Morrison G:\2016\201603\Penstemon\201603-01-ContextMap.dwg  
[User: Brian Morrison, Plot: 15013-01-01, Scale: 1/8"=1'-0", Plot Size: 11.00x17.00, Plot Date: 12/7/2016 11:19:37 AM]



**RECEIVED**  
By Susie Murray at 9:38 am, Sep 15, 2021



0 60 120  
scale 1" = 60' feet

EXISTING CONDITIONS  
AERIAL PHOTO  
**PENSTEMON PLACE**

SANTA ROSA, CALIFORNIA

DECEMBER 3, 2020



CIVIL ENGINEERS • URBAN PLANNERS • LAND SURVEYORS • LANDSCAPE ARCHITECTS

15 THIRD STREET, SANTA ROSA, CA 95401  
TEL (707) 542-6451 FAX (707) 542-5212