

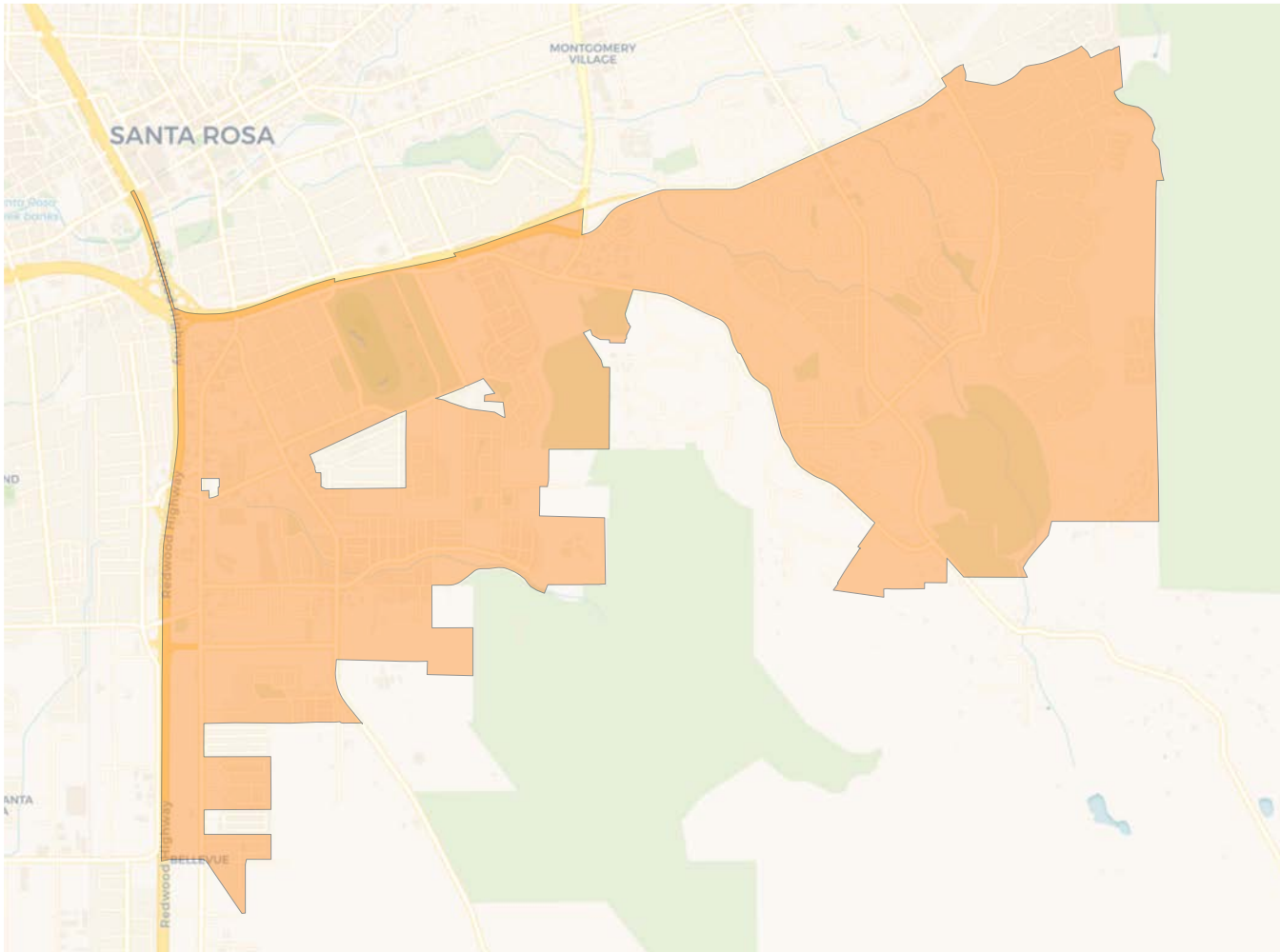
2020 Census

	1	2	3	4	5	6	7
Population	24,910	25,416	26,208	25,771	24,978	24,917	26,315
Deviation	-592	-86	706	269	-524	-585	813
Deviation %	-2.3%	-0.3%	2.8%	1.1%	-2.1%	-2.3%	3.2%
Other	14,384	17,878	20,279	16,564	12,314	13,040	8,301
Other %	57.7%	70.3%	77.4%	64.3%	49.3%	52.3%	31.5%
Latino	8,258	6,032	4,080	7,240	10,864	9,297	15,470
Latino %	33.2%	23.7%	15.6%	28.1%	43.5%	37.3%	58.8%
Asian	1,688	1,016	1,511	1,460	1,220	1,891	1,878
Asian %	6.8%	4.0%	5.8%	5.7%	4.9%	7.6%	7.1%
Black	580	490	338	507	580	689	666
Black %	2.3%	1.9%	1.3%	2.0%	2.3%	2.8%	2.5%

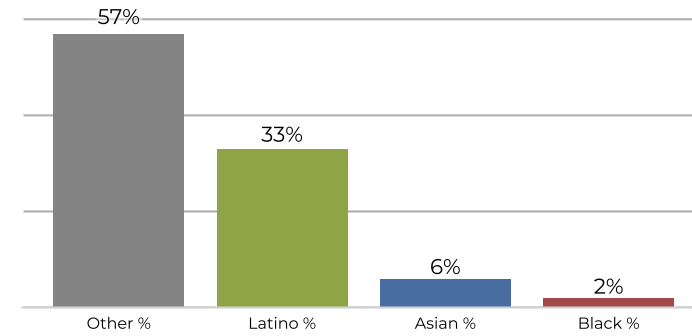
Citizen Voting Age Population (CVAP)

	1	2	3	4	5	6	7
Total CVAP	16,454	19,543	19,613	19,514	15,095	16,761	14,944
Other CVAP	12,201	15,999	16,897	14,771	10,514	12,118	7,382
Other CVAP %	74.2%	81.9%	86.2%	75.7%	69.7%	72.3%	49.4%
Latino CVAP	2,515	2,488	1,723	3,324	3,497	3,579	5,851
Latino CVAP %	15.3%	12.7%	8.8%	17.0%	23.2%	21.4%	39.2%
Asian CVAP	1,305	554	826	943	918	671	1,069
Asian CVAP %	7.9%	2.8%	4.2%	4.8%	6.1%	4.0%	7.2%
Black CVAP	433	502	167	476	166	393	642
Black CVAP %	2.6%	2.6%	0.9%	2.4%	1.1%	2.3%	4.3%

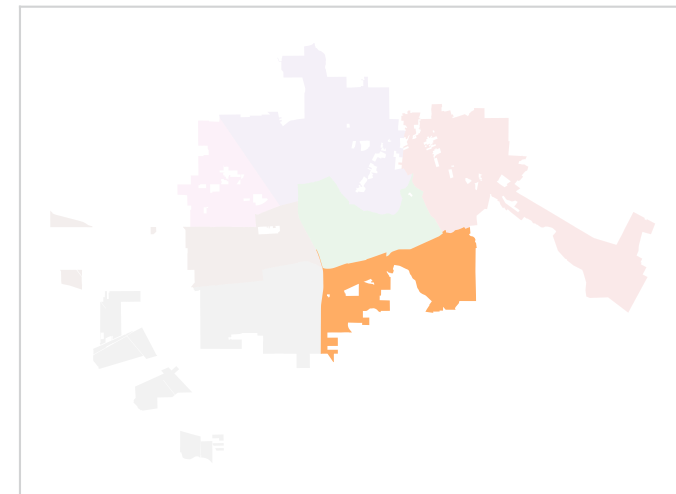
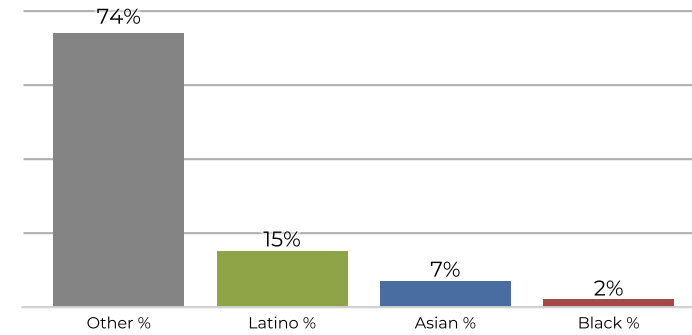
District 1



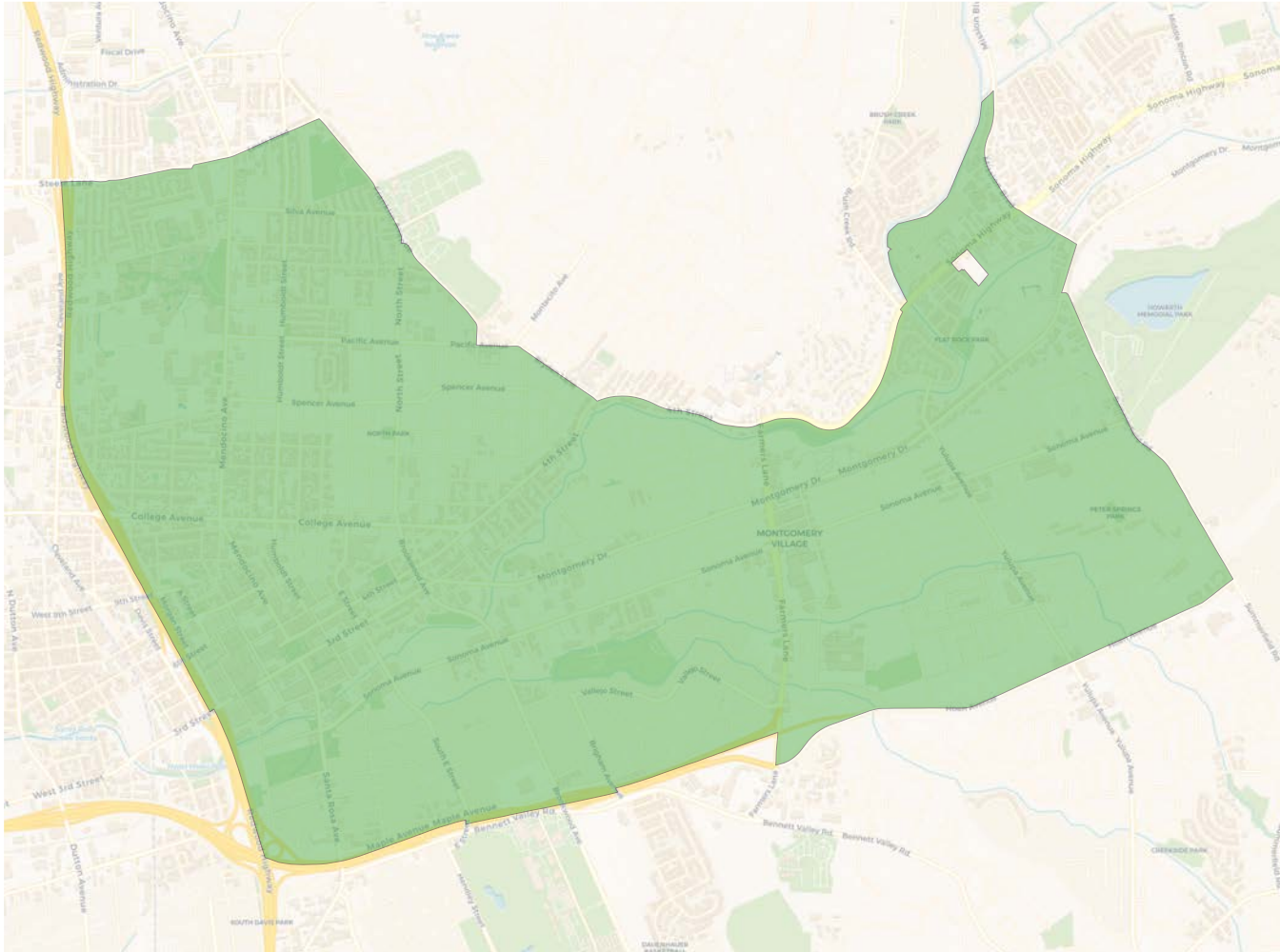
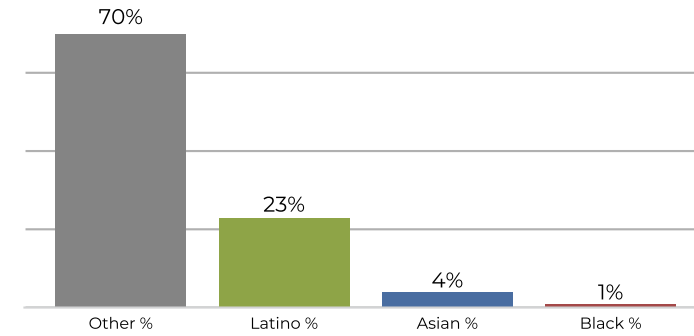
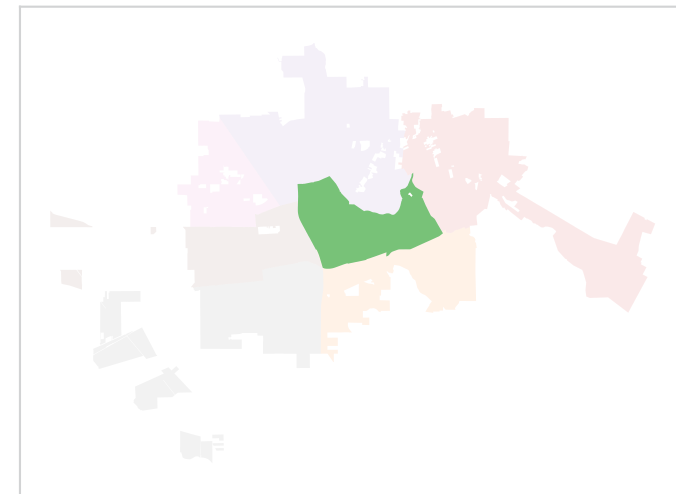
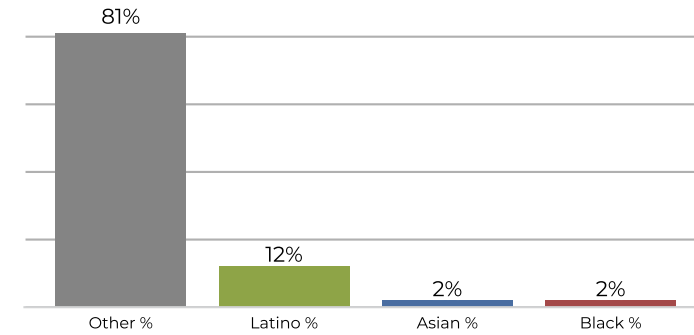
2020 Census



Citizen Voting Age Population

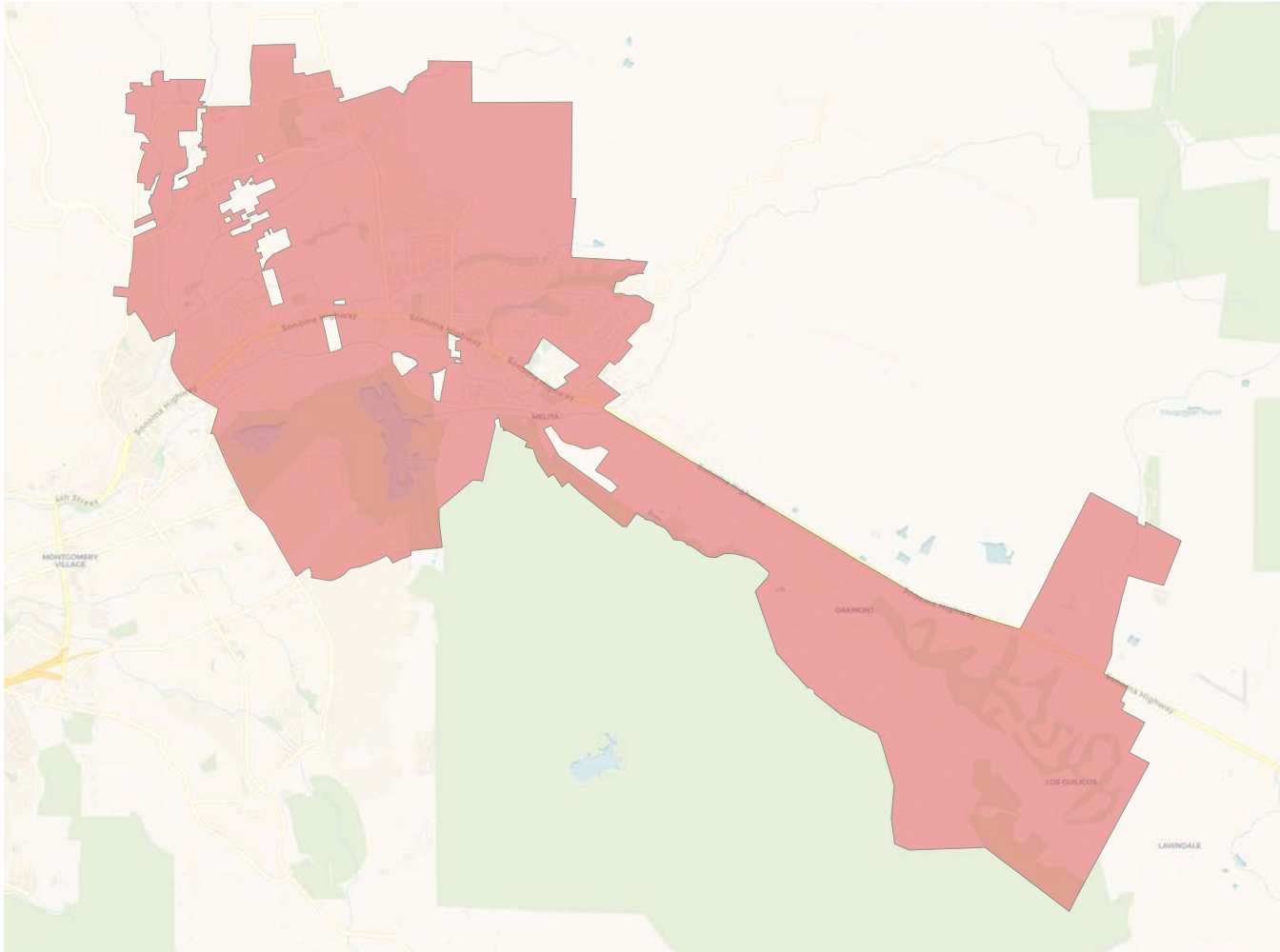


Population	Deviation	Deviation %	Other	Other %	Latino	Latino %	Asian	Asian %	Black	Black %
24,910	-592	-2.3%	14,384	57.7%	8,258	33.2%	1,688	6.8%	580	2.3%
Total CVAP	Other CVAP	Other CVAP %	Latino CVAP	Latino CVAP %	Asian CVAP	Asian CVAP %	Black CVAP	Black CVAP %		
16,454	12,201	74.2%	2,515	15.3%	1,305	7.9%	433	2.6%		

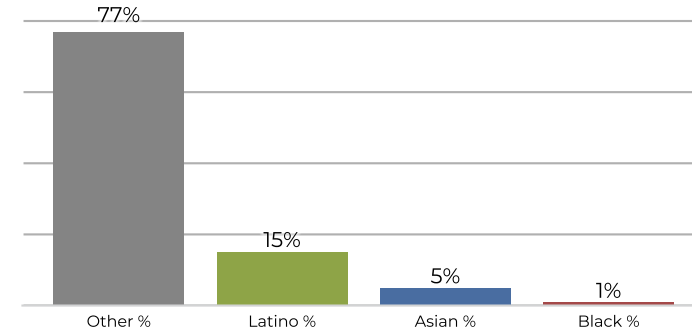
District 2

2020 Census

Citizen Voting Age Population


Population	Deviation	Deviation %	Other	Other %	Latino	Latino %	Asian	Asian %	Black	Black %
25,416	-86	-0.3%	17,878	70.3%	6,032	23.7%	1,016	4.0%	490	1.9%
Total CVAP	Other CVAP	Other CVAP %	Latino CVAP	Latino CVAP %	Asian CVAP	Asian CVAP %	Black CVAP	Black CVAP %		
19,543	15,999	81.9%	2,488	12.7%	554	2.8%	502	2.6%		

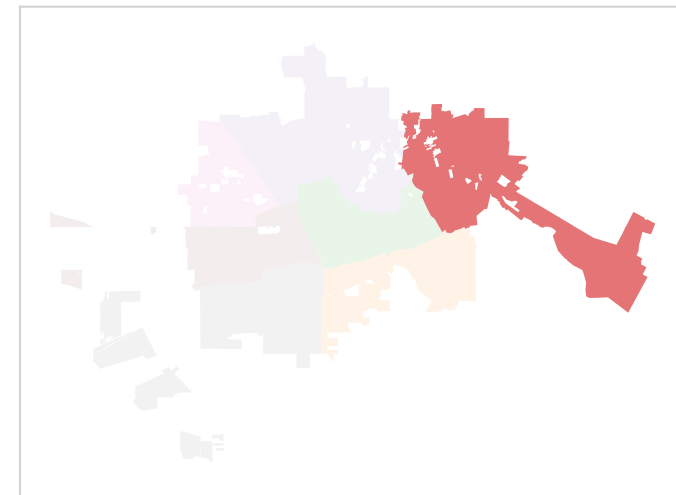
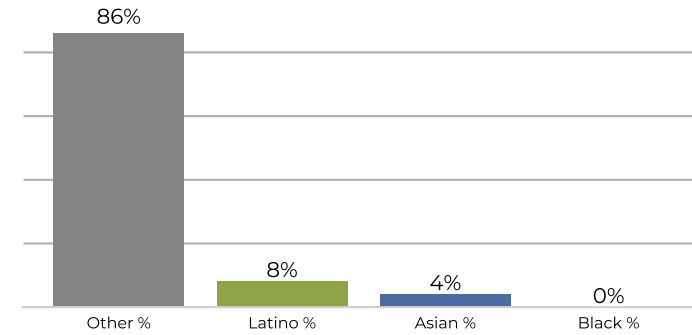
District 3



2020 Census

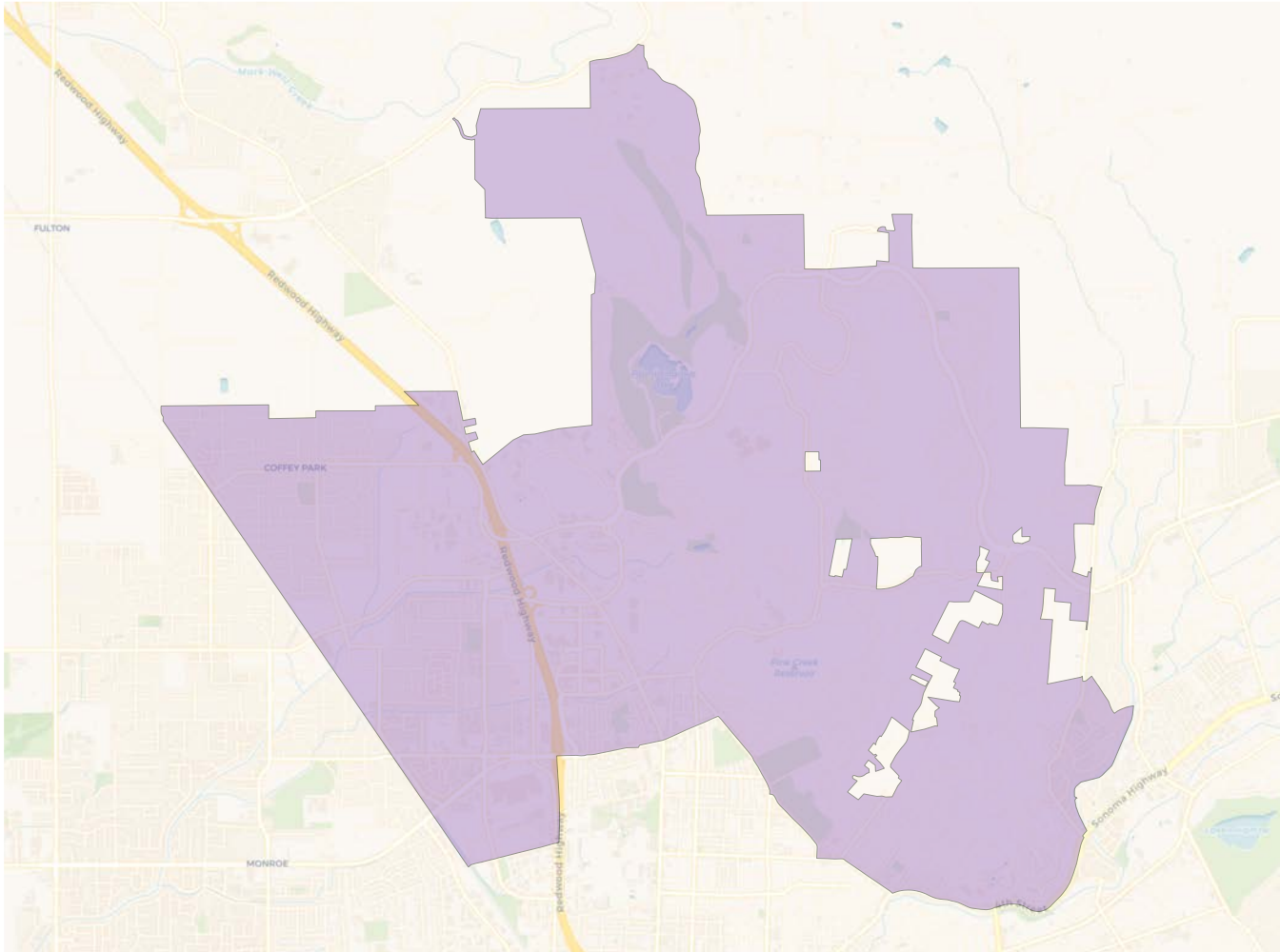


Citizen Voting Age Population

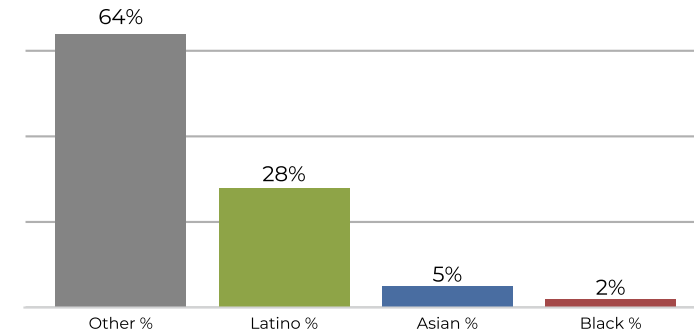


Population	Deviation	Deviation %	Other	Other %	Latino	Latino %	Asian	Asian %	Black	Black %
26,208	706	2.8%	20,279	77.4%	4,080	15.6%	1,511	5.8%	338	1.3%
Total CVAP	Other CVAP	Other CVAP %	Latino CVAP	Latino CVAP %	Asian CVAP	Asian CVAP %	Black CVAP	Black CVAP %		
19,613	16,897	86.2%	1,723	8.8%	826	4.2%	167	0.9%		

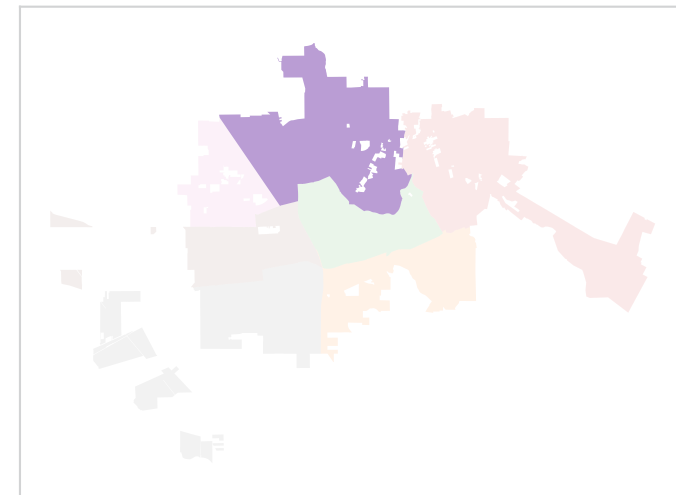
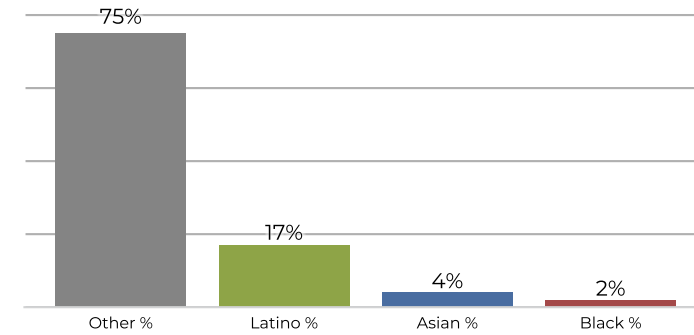
District 4



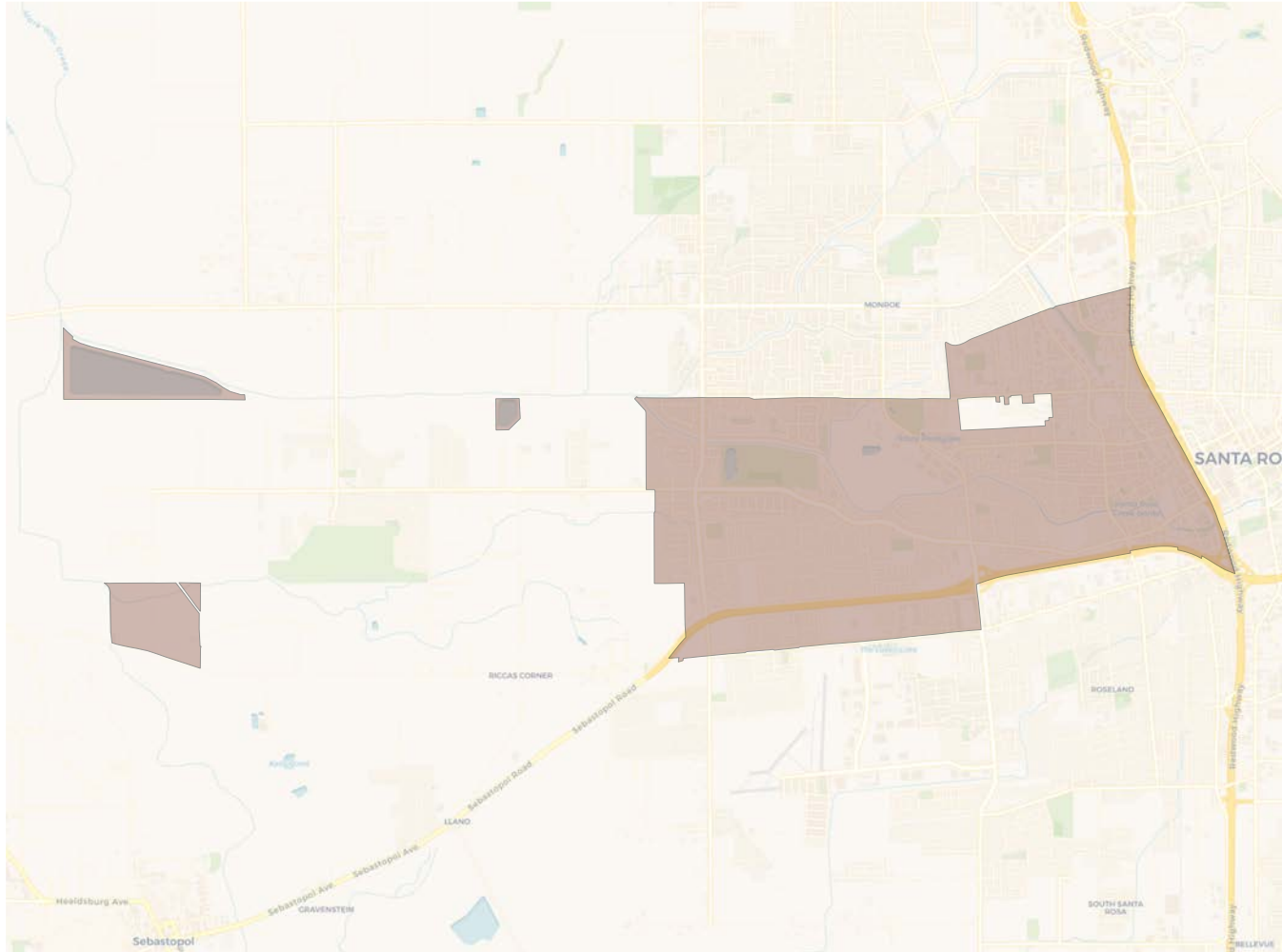
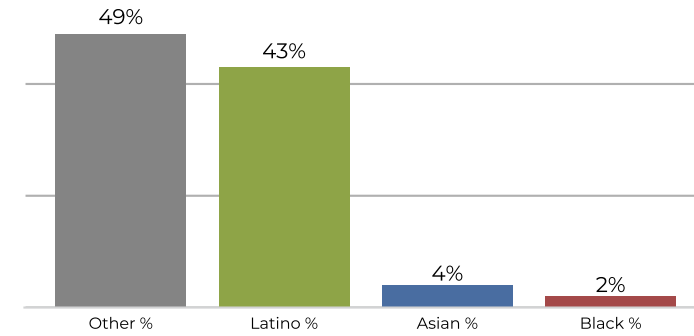
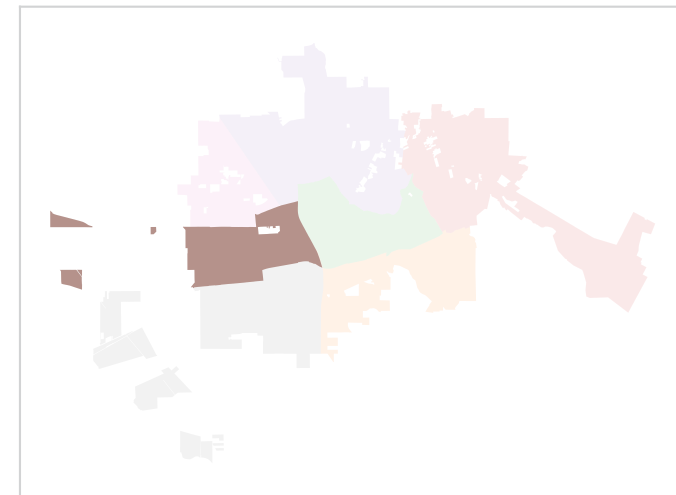
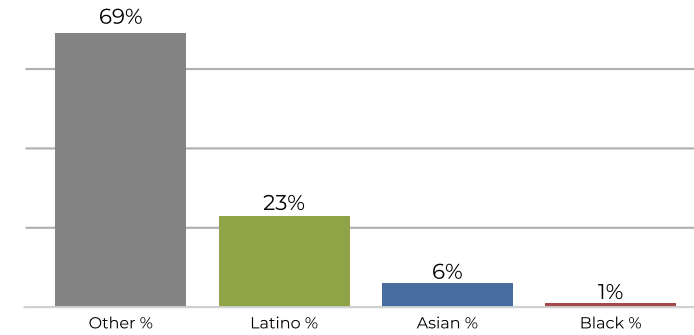
2020 Census



Citizen Voting Age Population

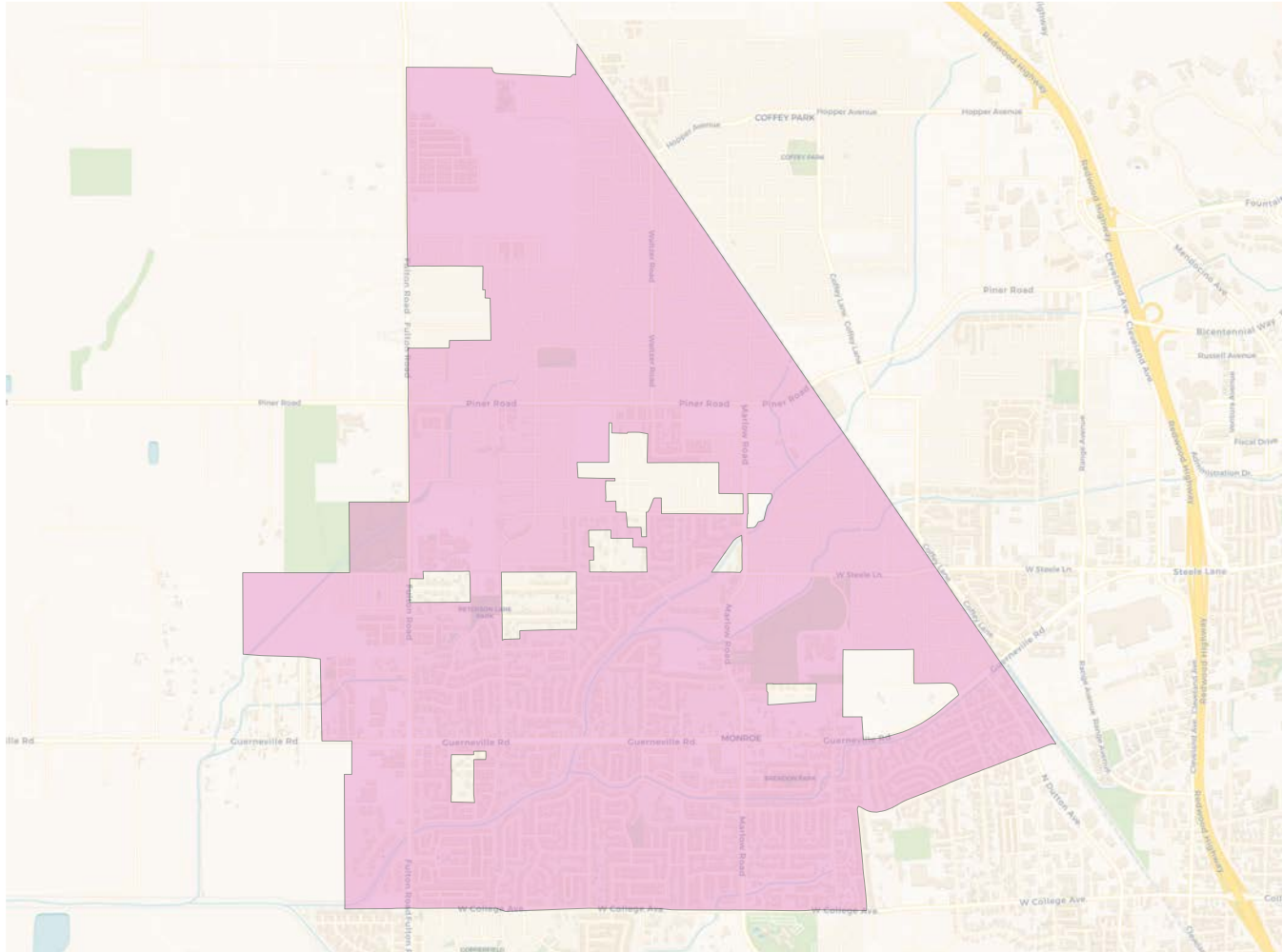


Population	Deviation	Deviation %	Other	Other %	Latino	Latino %	Asian	Asian %	Black	Black %
25,771	269	1.1%	16,564	64.3%	7,240	28.1%	1,460	5.7%	507	2.0%
Total CVAP	Other CVAP	Other CVAP %	Latino CVAP	Latino CVAP %	Asian CVAP	Asian CVAP %	Black CVAP	Black CVAP %		
19,514	14,771	75.7%	3,324	17.0%	943	4.8%	476	2.4%		

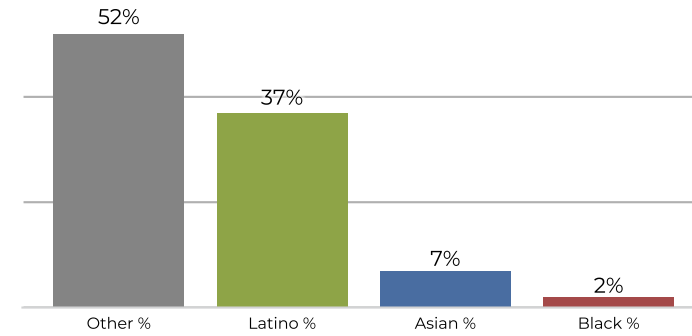
District 5

2020 Census

Citizen Voting Age Population


Population	Deviation	Deviation %	Other	Other %	Latino	Latino %	Asian	Asian %	Black	Black %
24,978	-524	-2.1%	12,314	49.3%	10,864	43.5%	1,220	4.9%	580	2.3%
Total CVAP	Other CVAP	Other CVAP %	Latino CVAP	Latino CVAP %	Asian CVAP	Asian CVAP %	Black CVAP	Black CVAP %		
15,095	10,514	69.7%	3,497	23.2%	918	6.1%	166	1.1%		

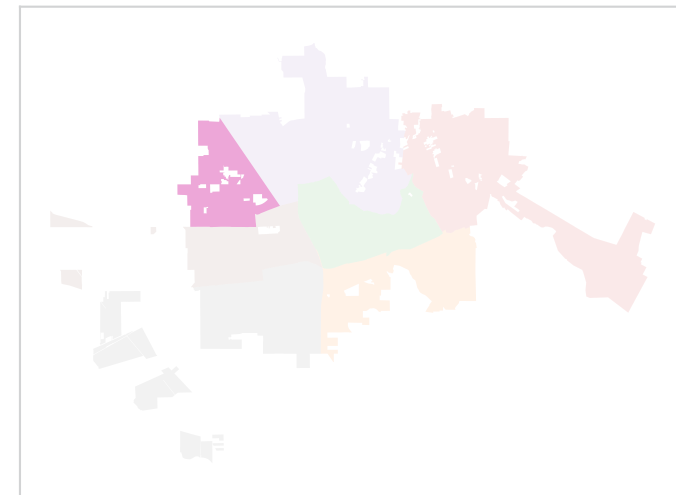
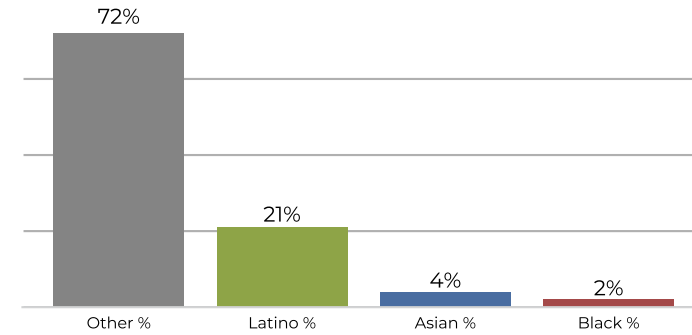
District 6



2020 Census

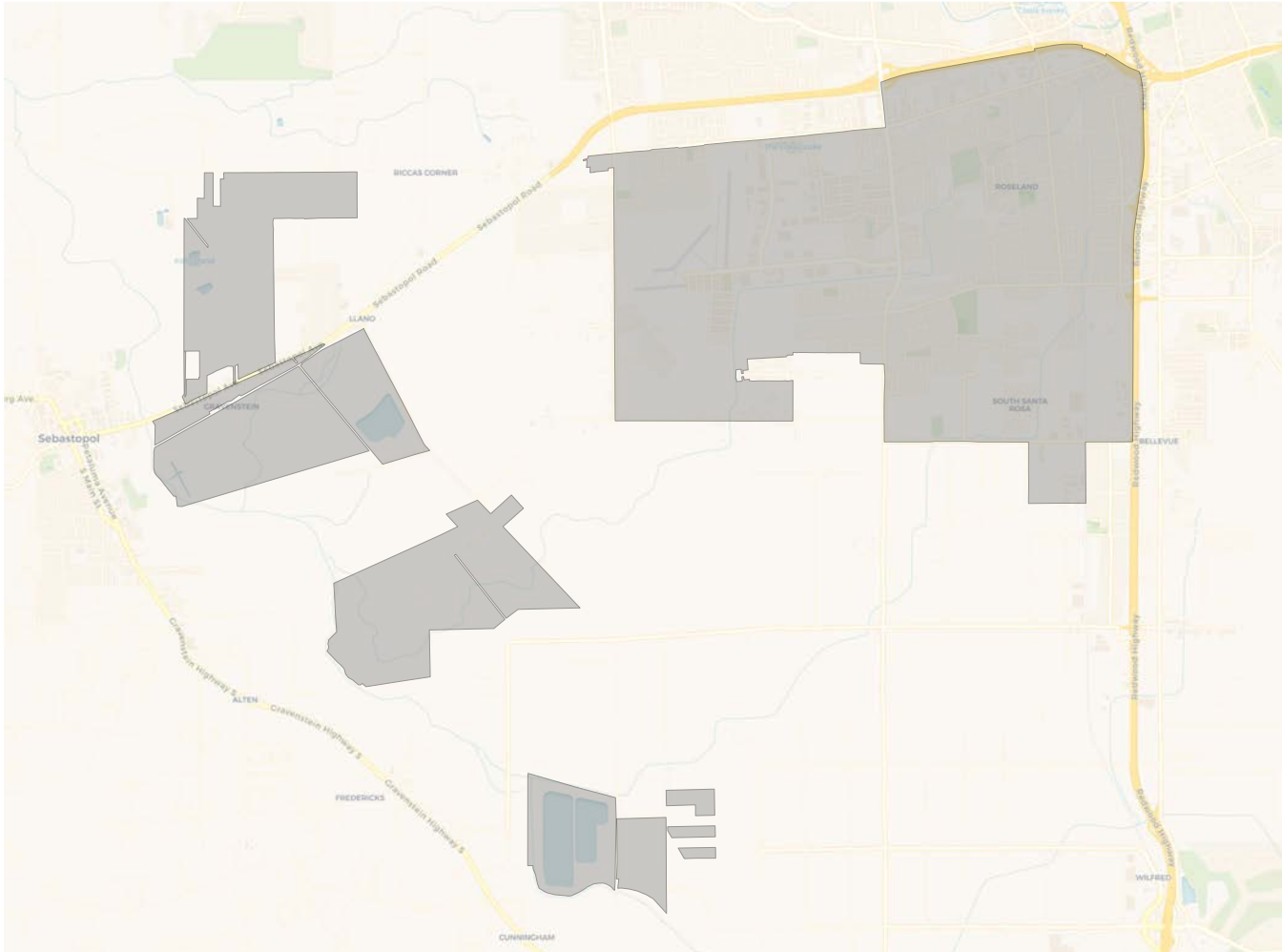


Citizen Voting Age Population

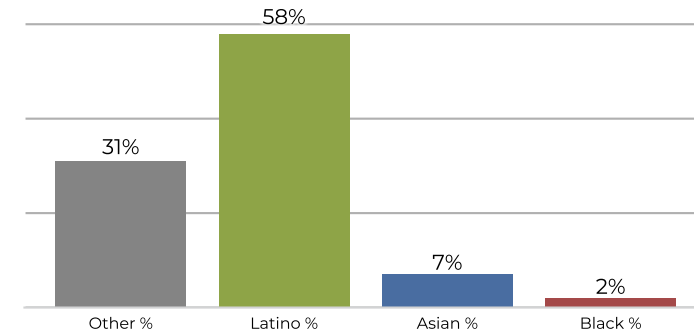


Population	Deviation	Deviation %	Other	Other %	Latino	Latino %	Asian	Asian %	Black	Black %
24,917	-585	-2.3%	13,040	52.3%	9,297	37.3%	1,891	7.6%	689	2.8%
Total CVAP	Other CVAP	Other CVAP %	Latino CVAP	Latino CVAP %	Asian CVAP	Asian CVAP %	Black CVAP	Black CVAP %		
16,761	12,118	72.3%	3,579	21.4%	671	4.0%	393	2.3%		

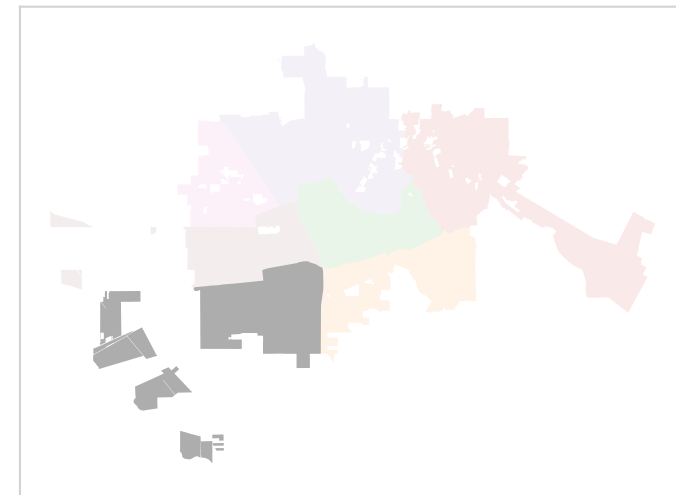
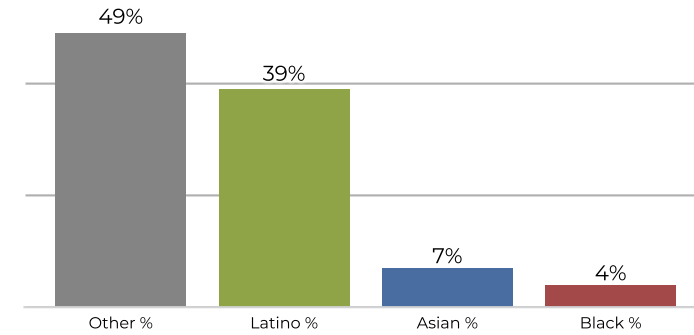
District 7



2020 Census



Citizen Voting Age Population



Population	Deviation	Deviation %	Other	Other %	Latino	Latino %	Asian	Asian %	Black	Black %
26,315	813	3.2%	8,301	31.5%	15,470	58.8%	1,878	7.1%	666	2.5%
Total CVAP	Other CVAP	Other CVAP %	Latino CVAP	Latino CVAP %	Asian CVAP	Asian CVAP %	Black CVAP	Black CVAP %		
14,944	7,382	49.4%	5,851	39.2%	1,069	7.2%	642	4.3%		