

**NOTES**

1. CONTRACTOR SHALL FIELD VERIFY ALL DIMENSIONS.
2. CONTRACTOR SHALL MAINTAIN A 10'-0" MINIMUM SEPARATION BETWEEN THE PROPOSED GPS UNIT, TRANSMITTING ANTENNAS AND EXISTING GPS UNITS.
3. PROPOSED WORK IS COMPLIANT WITH 6409(g) ELIGIBILITY FACILITIES REQUEST CRITERIA



5701 SOUTH SANTA FE DRIVE  
LITTLETON, CO 80120



2840 HOWE ROAD, SUITE E  
MARTINEZ, CA 94553  
www.TheCBRGroup.com

IT IS A VIOLATION OF LAW FOR ANY PERSON, UNLESS THEY ARE ACTING UNDER THE DIRECTION OF A LICENSED PROFESSIONAL ENGINEER, TO ALTER THIS DOCUMENT.

|           |             |              |
|-----------|-------------|--------------|
| DRAWN BY: | CHECKED BY: | APPROVED BY: |
| JDL/IK    | ---         | ---          |

RFDS REV #: 11/17/2021 REV 3

**ZONING DOCUMENTS**

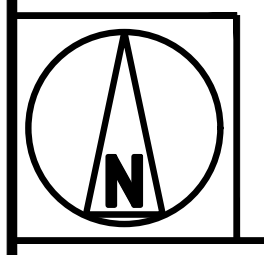
| SUBMITTALS |            |                           |
|------------|------------|---------------------------|
| REV        | DATE       | DESCRIPTION               |
| A          | 11/22/2021 | 90%ZD'S ISSUED FOR REVIEW |
| B          | 11/29/2021 | 100% ZONING DRAWINGS      |
|            |            |                           |
|            |            |                           |
|            |            |                           |

A&E PROJECT NUMBER  
SFSF000280A

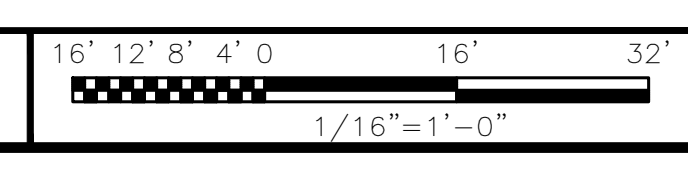
DISH Wireless L.L.C.  
PROJECT INFORMATION  
SFSF000280A  
50 OLD COURTHOUSE SQ.  
SANTA ROSA, CA 95404

SHEET TITLE  
OVERALL  
SITE PLAN

SHEET NUMBER  
**A-1**



OVERALL SITE PLAN



TOTAL AREA FOR CABLE TRAY = 233.2 SQ. FT.

NOTES

1. CONTRACTOR SHALL FIELD VERIFY ALL DIMENSIONS.
2. CONTRACTOR SHALL MAINTAIN A 10'-0" MINIMUM SEPARATION BETWEEN THE PROPOSED GPS UNIT, TRANSMITTING ANTENNAS AND EXISTING GPS UNITS.
3. UTILITY RUBBER MAT TO BE INSTALLED UNDER ALL DISH Wireless L.L.C. EQUIPMENT THAT IS RESTING ON OR AFFIXED TO ROOF MEMBRANE



5701 SOUTH SANTA FE DRIVE  
LITTLETON, CO 80120



2840 HOWE ROAD, SUITE E  
MARTINEZ, CA 94553  
www.TheCBRGroup.com

IT IS A VIOLATION OF LAW FOR ANY PERSON, UNLESS THEY ARE ACTING UNDER THE DIRECTION OF A LICENSED PROFESSIONAL ENGINEER, TO ALTER THIS DOCUMENT.

DRAWN BY: CHECKED BY: APPROVED BY:  
JDL/IK --- ---

RFDS REV #: 11/17/2021 REV 3

ZONING DOCUMENTS

| SUBMITTALS |            |                           |
|------------|------------|---------------------------|
| REV        | DATE       | DESCRIPTION               |
| A          | 11/22/2021 | 90%ZD'S ISSUED FOR REVIEW |
| B          | 11/29/2021 | 100% ZONING DRAWINGS      |
|            |            |                           |
|            |            |                           |
|            |            |                           |

A&E PROJECT NUMBER  
SFSF000280A

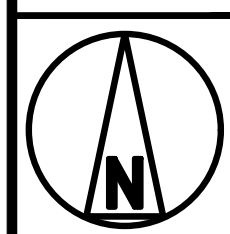
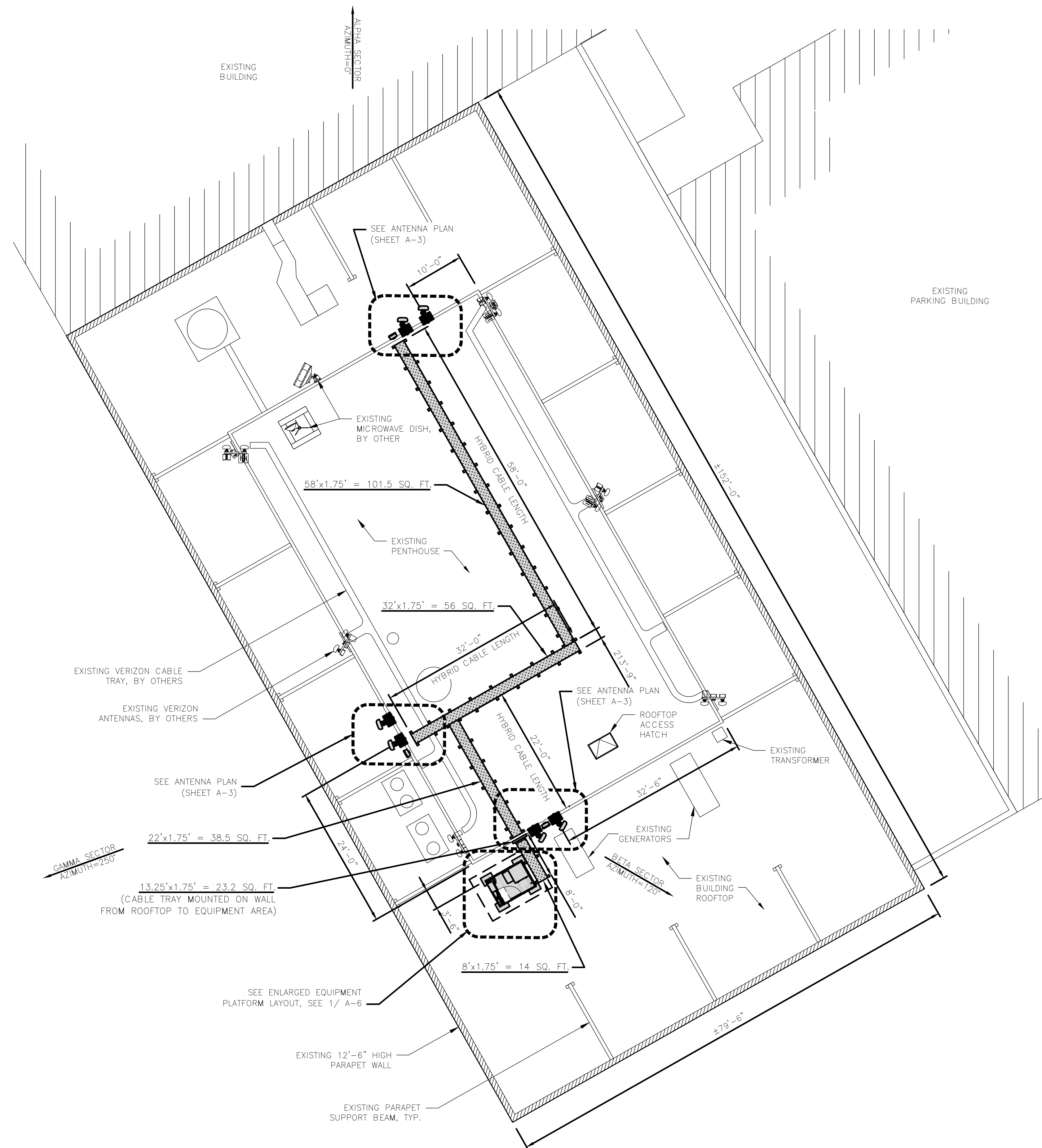
DISH Wireless L.L.C.  
PROJECT INFORMATION

SFSF000280A  
50 OLD COURTHOUSE SQ.  
SANTA ROSA, CA 95404

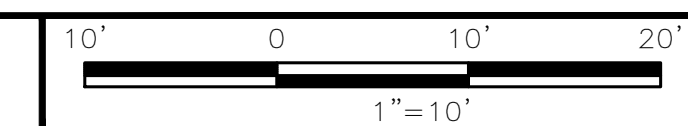
SHEET TITLE  
ENLARGED BUILDING  
PLAN

SHEET NUMBER

**A-2**



ENLARGED BUILDING PLAN

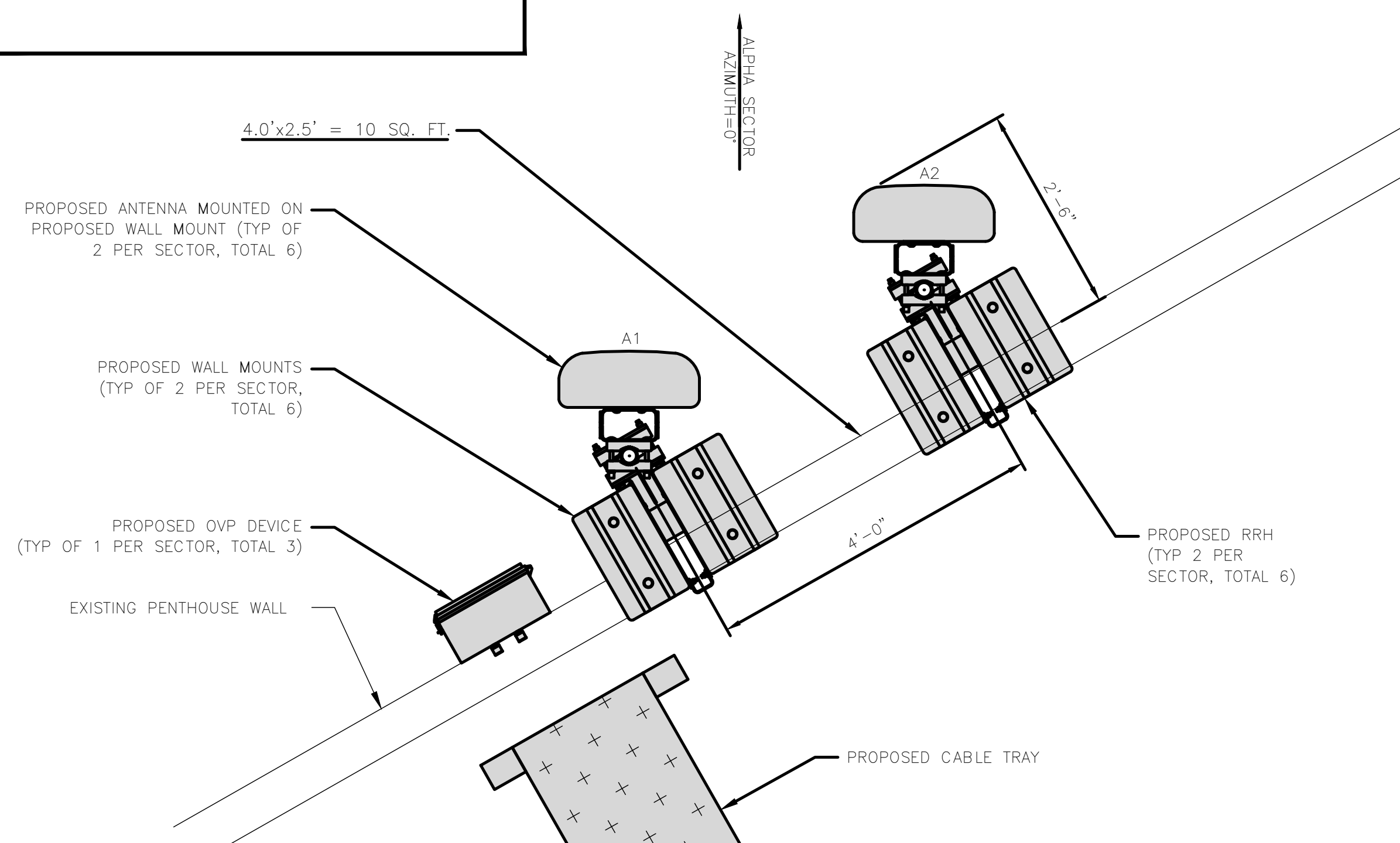




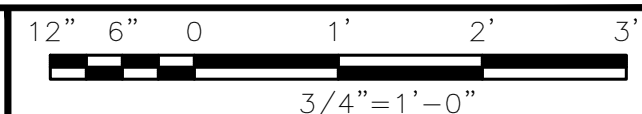
**NOTES**

1. CONTRACTOR SHALL FIELD VERIFY ALL DIMENSIONS.
2. ANTENNA SPECIFICATIONS REFER TO ANTENNA SCHEDULE AND TO FINAL CONSTRUCTION RFDS FOR ALL RF DETAILS

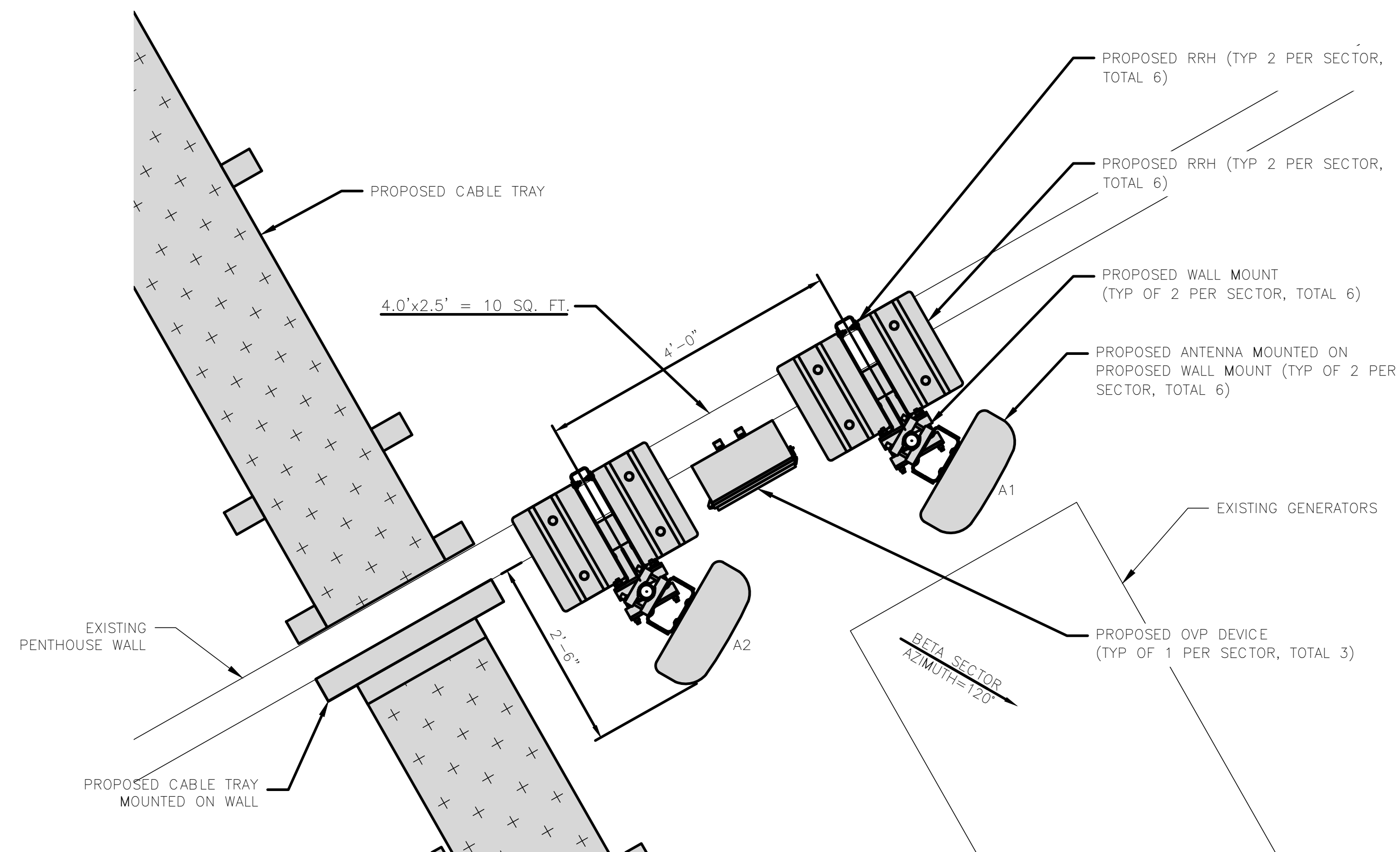
TOTAL AREA FOR ANTENNAS = 29.6 SQ. FT.



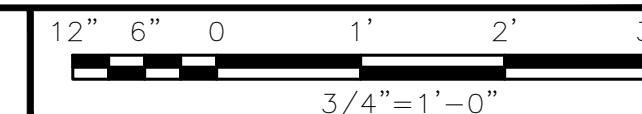
ANTENNA PLAN – ALPHA SECTOR



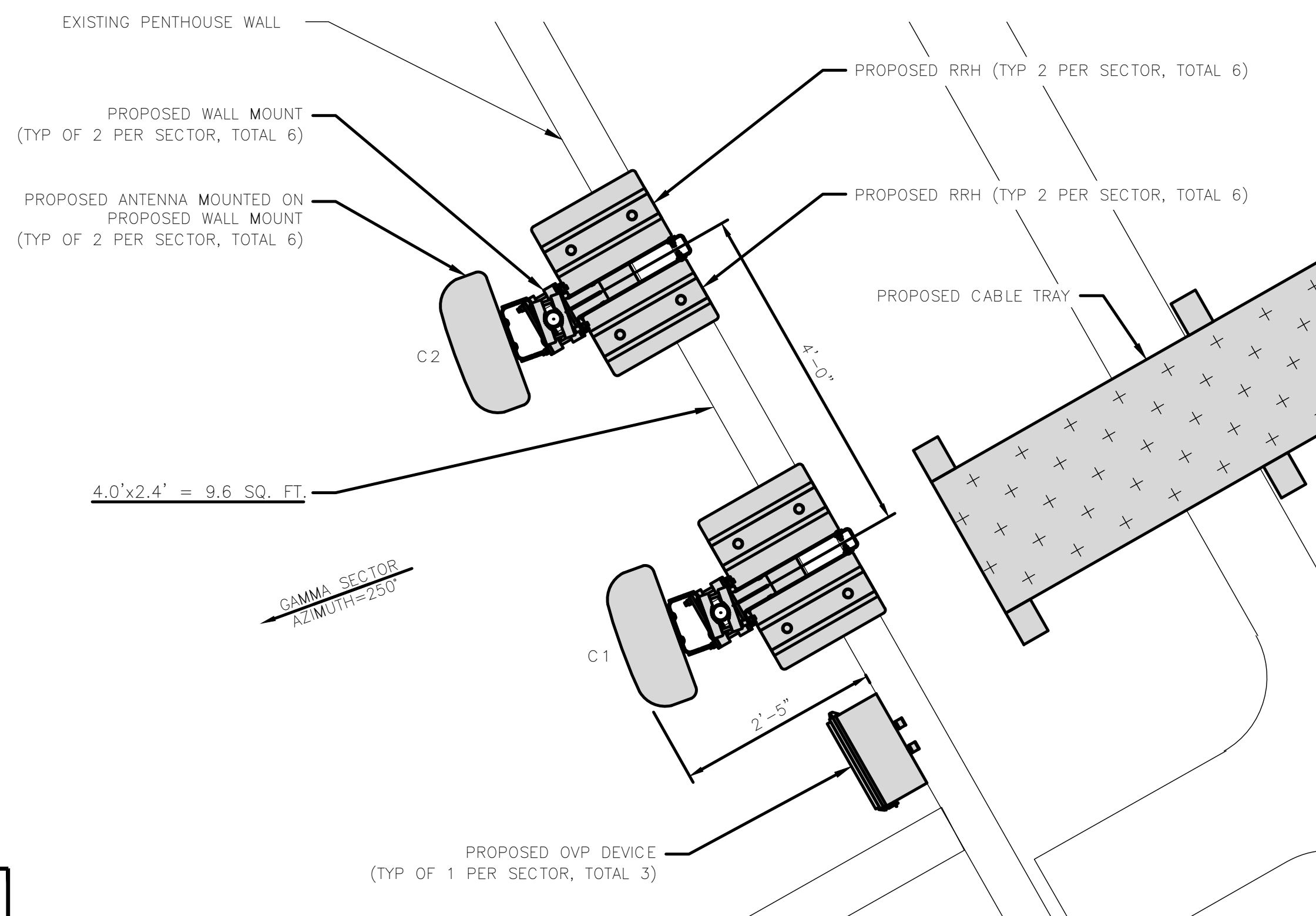
1



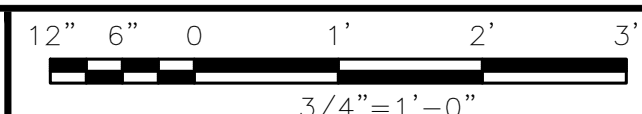
ANTENNA PLAN – BETA SECTOR



2



ANTENNA PLAN – GAMMA SECTORS



3

| SECTOR | POSITION | ANTENNA              |                             |            |              |         |            | TRANSMISSION CABLE        |                   |
|--------|----------|----------------------|-----------------------------|------------|--------------|---------|------------|---------------------------|-------------------|
|        |          | EXISTING OR PROPOSED | MANUFACTURER – MODEL NUMBER | TECHNOLOGY | SIZE (HxWxD) | AZIMUTH | RAD CENTER | FEED LINE TYPE AND LENGTH | FIBER LINE (140') |
| ALPHA  | A1       | PROPOSED             | ANTENNA – FUTURE/TBD        | –          | –            | 0°      | 107'       | POWER LINE (140')         | FIBER LINE (140') |
|        | A2       | PROPOSED             | ANTENNA – FUTURE/TBD        | –          | –            | 0°      | 107'       |                           |                   |
| BETA   | B1       | PROPOSED             | ANTENNA – FUTURE/TBD        | –          | –            | 120°    | 107'       | POWER LINE (140')         | FIBER LINE (140') |
|        | B2       | PROPOSED             | ANTENNA – FUTURE/TBD        | –          | –            | 120°    | 107'       |                           |                   |
| GAMMA  | G1       | PROPOSED             | ANTENNA – FUTURE/TBD        | –          | –            | 250°    | 107'       | POWER LINE (140')         | FIBER LINE (140') |
|        | G2       | PROPOSED             | ANTENNA – FUTURE/TBD        | –          | –            | 250°    | 107'       |                           |                   |

| SECTOR | POSITION | RRH                         |            |              | NOTES  |
|--------|----------|-----------------------------|------------|--------------|--|
|        |          | MANUFACTURER – MODEL NUMBER | TECHNOLOGY | SIZE (HxWxD) |  |
| ALPHA  | A1       | RADIO – FUTURE/TBD          | –          | –            | 1. CONTRACTOR TO REFER TO FINAL CONSTRUCTION RFDS FOR ALL RF DETAILS.<br>2. ANTENNA AND RRH MODELS MAY CHANGE DUE TO EQUIPMENT AVAILABILITY. ALL EQUIPMENT CHANGES MUST BE APPROVED AND REMAIN IN COMPLIANCE WITH THE PROPOSED DESIGN AND STRUCTURAL ANALYSES. |
|        | A1       | RADIO – FUTURE/TBD          | –          | –            |  |
| ALPHA  | A2       | RADIO – FUTURE/TBD          | –          | –            |  |
|        | A2       | RADIO – FUTURE/TBD          | –          | –            |  |
| BETA   | B1       | RADIO – FUTURE/TBD          | –          | –            |  |
|        | B1       | RADIO – FUTURE/TBD          | –          | –            |  |
| GAMMA  | G1       | RADIO – FUTURE/TBD          | –          | –            |  |
|        | G1       | RADIO – FUTURE/TBD          | –          | –            |  |
| GAMMA  | G2       | RADIO – FUTURE/TBD          | –          | –            |  |
|        | G2       | RADIO – FUTURE/TBD          | –          | –            |  |

ANTENNA SCHEDULE

NO SCALE

4



5701 SOUTH SANTA FE DRIVE  
LITTLETON, CO 80120



2840 HOWE ROAD, SUITE E  
MARTINEZ, CA 94553  
www.TheCBRGroup.com

IT IS A VIOLATION OF LAW FOR ANY PERSON, UNLESS THEY ARE ACTING UNDER THE DIRECTION OF A LICENSED PROFESSIONAL ENGINEER, TO ALTER THIS DOCUMENT.

DRAWN BY: CHECKED BY: APPROVED BY:  
JDL/IK --- ---

RFDS REV #: 11/17/2021 REV 3

**ZONING DOCUMENTS**

| SUBMITTALS |            |                           |
|------------|------------|---------------------------|
| REV        | DATE       | DESCRIPTION               |
| A          | 11/22/2021 | 90%ZD'S ISSUED FOR REVIEW |
| B          | 11/29/2021 | 100% ZONING DRAWINGS      |

A&E PROJECT NUMBER

SFSF000280A

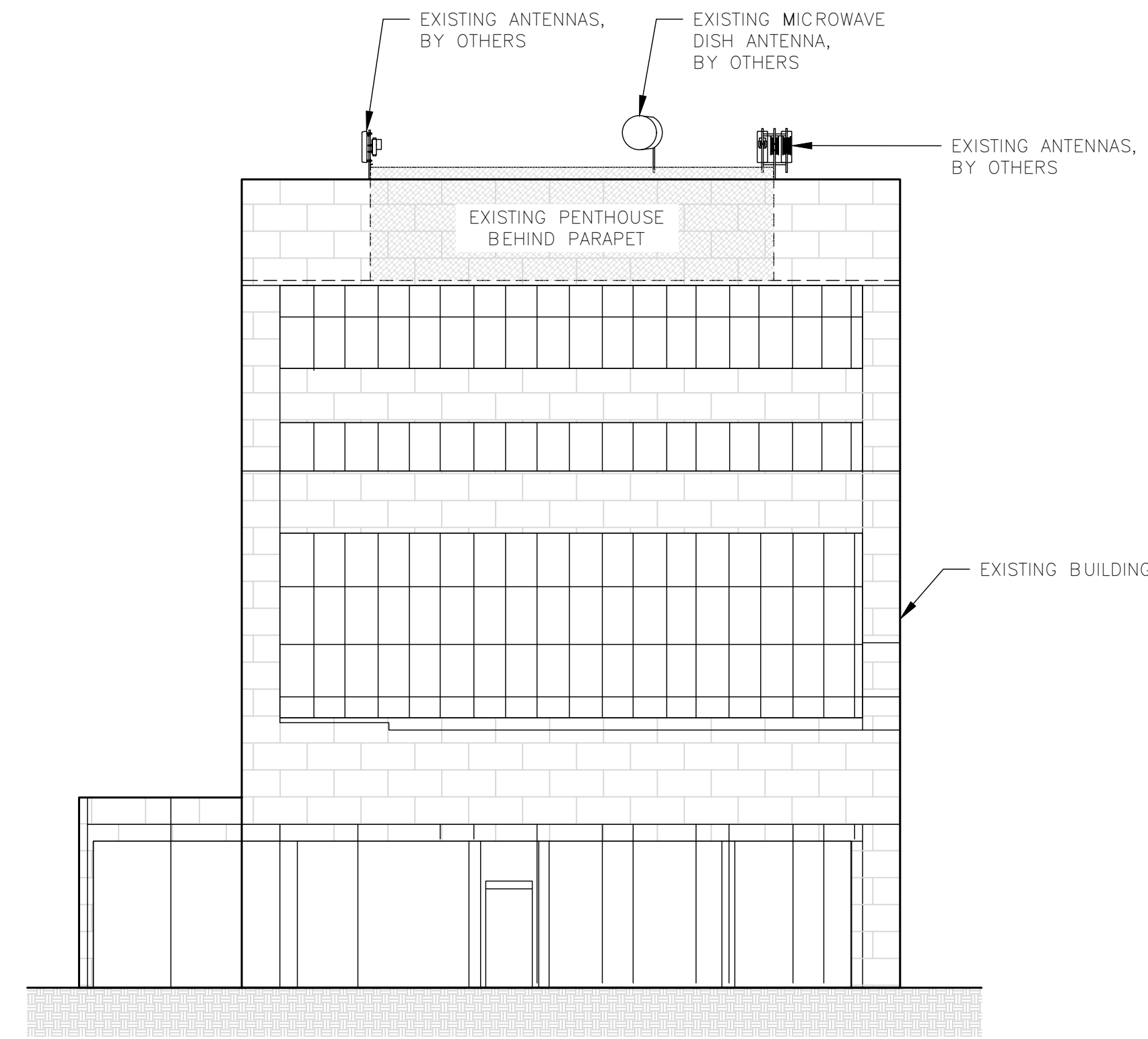
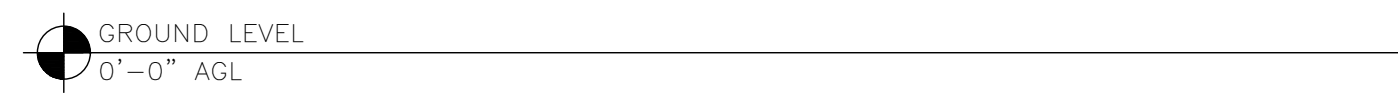
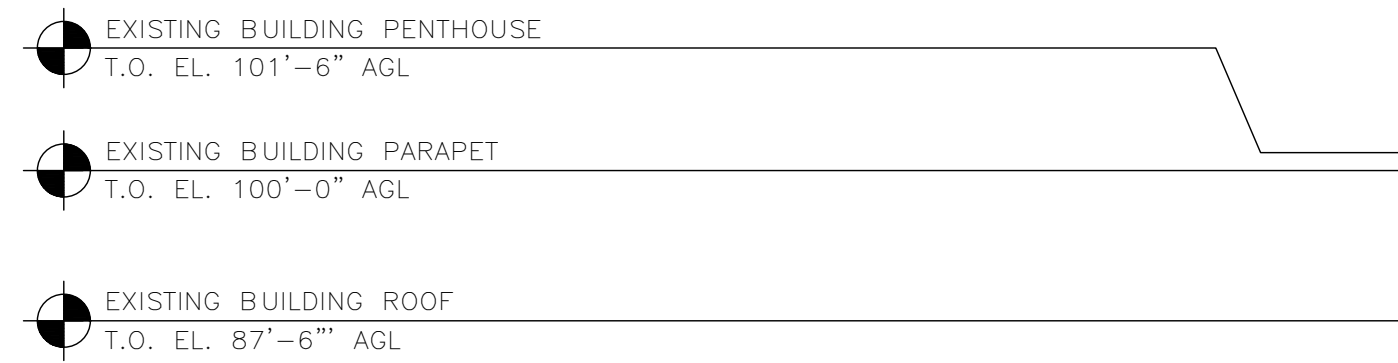
DISH Wireless L.L.C.  
PROJECT INFORMATION

SFSF000280A  
50 OLD COURTHOUSE SQ.  
SANTA ROSA, CA 95404

SHEET TITLE  
ANTENNA PLANS  
AND SCHEDULE

SHEET NUMBER

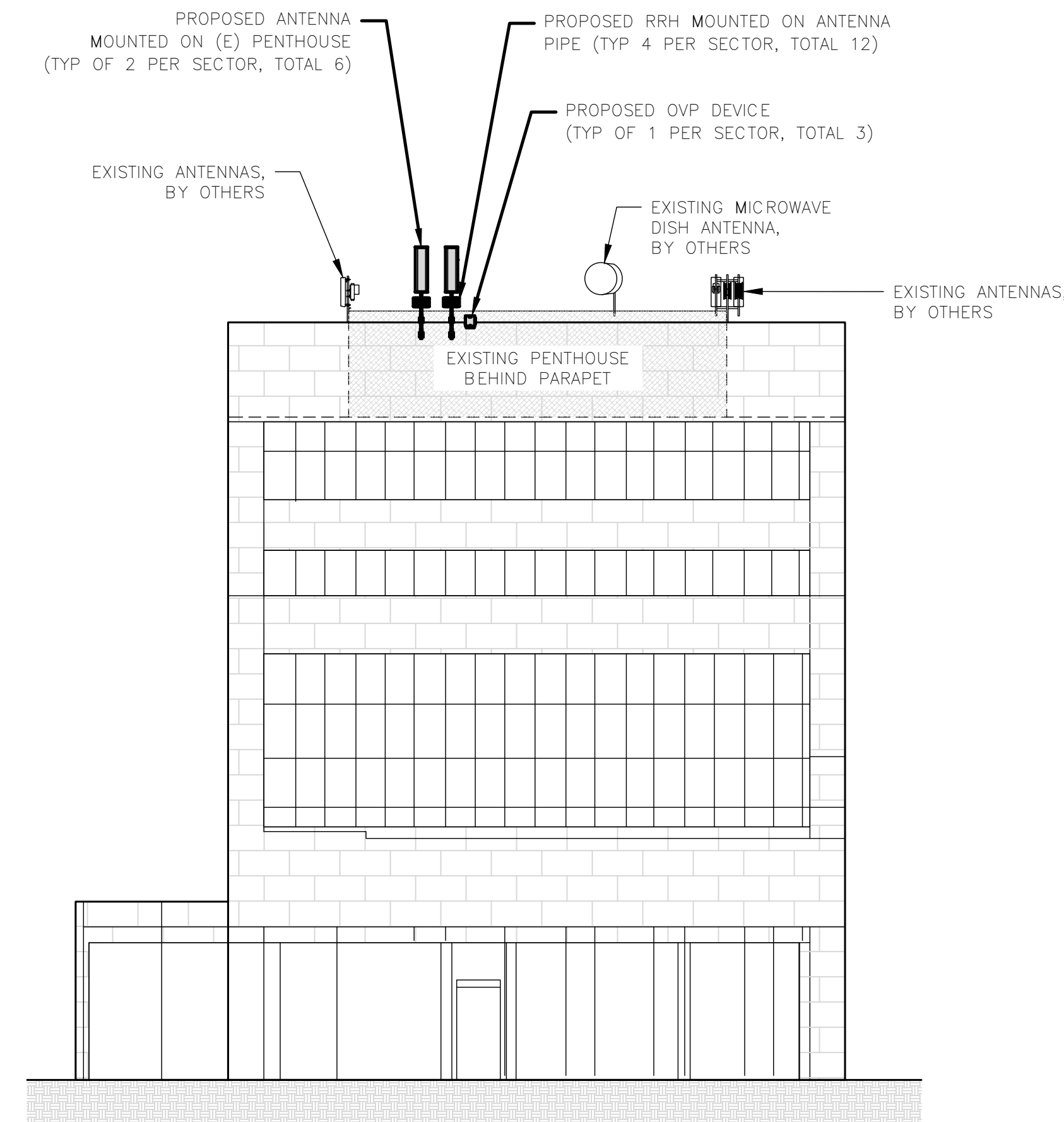
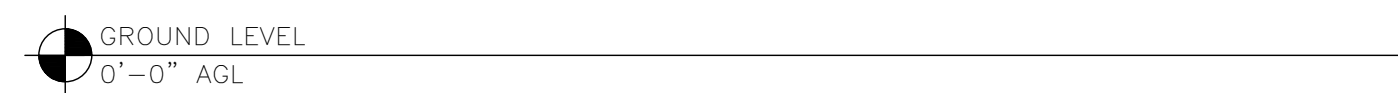
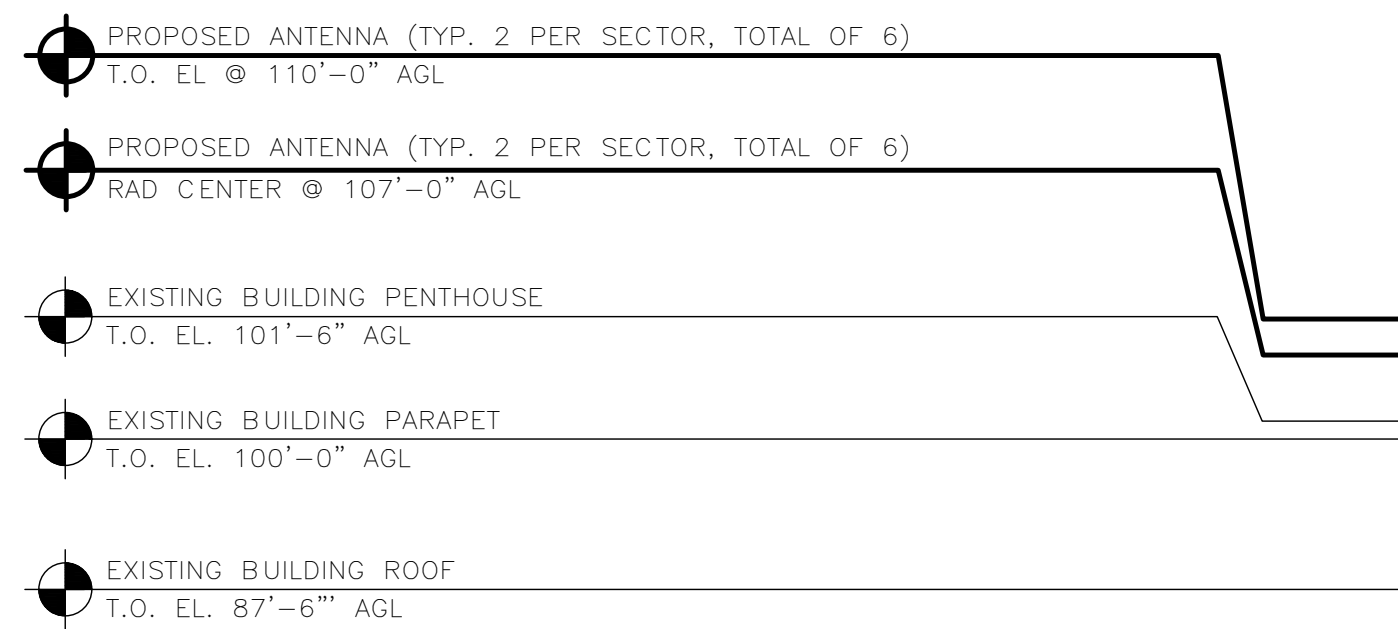
**A-3**



EXISTING NORTHWEST ELEVATION



1



PROPOSED NORTHWEST ELEVATION



2

NOTES

1. CONTRACTOR SHALL FIELD VERIFY ALL DIMENSIONS.
2. CONTRACTOR SHALL MAINTAIN A 10'-0" MINIMUM SEPARATION BETWEEN THE PROPOSED GPS UNIT, TRANSMITTING ANTENNAS AND EXISTING GPS UNITS.



5701 SOUTH SANTA FE DRIVE  
LITTLETON, CO 80120



2840 HOWE ROAD, SUITE E  
MARTINEZ, CA 94553  
www.TheCBRGroup.com

IT IS A VIOLATION OF LAW FOR ANY PERSON, UNLESS THEY ARE ACTING UNDER THE DIRECTION OF A LICENSED PROFESSIONAL ENGINEER, TO ALTER THIS DOCUMENT.

DRAWN BY: JDL/IK  
CHECKED BY: ---  
APPROVED BY: ---

RFDS REV #: 11/17/2021 REV 3

ZONING DOCUMENTS

| SUBMITTALS |            |                            |
|------------|------------|----------------------------|
| REV        | DATE       | DESCRIPTION                |
| A          | 11/22/2021 | 90% ZD'S ISSUED FOR REVIEW |
| B          | 11/29/2021 | 100% ZONING DRAWINGS       |
|            |            |                            |
|            |            |                            |
|            |            |                            |

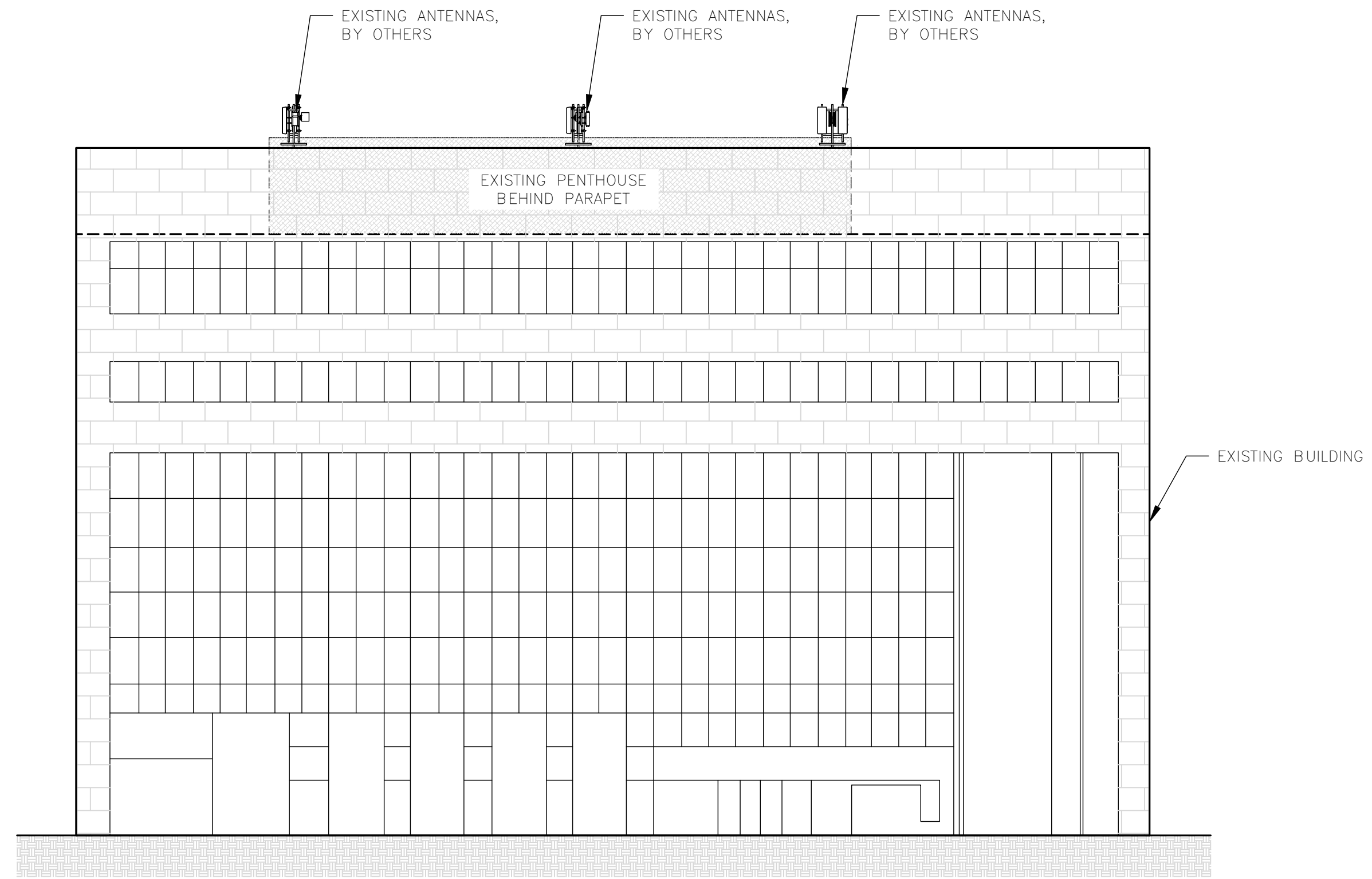
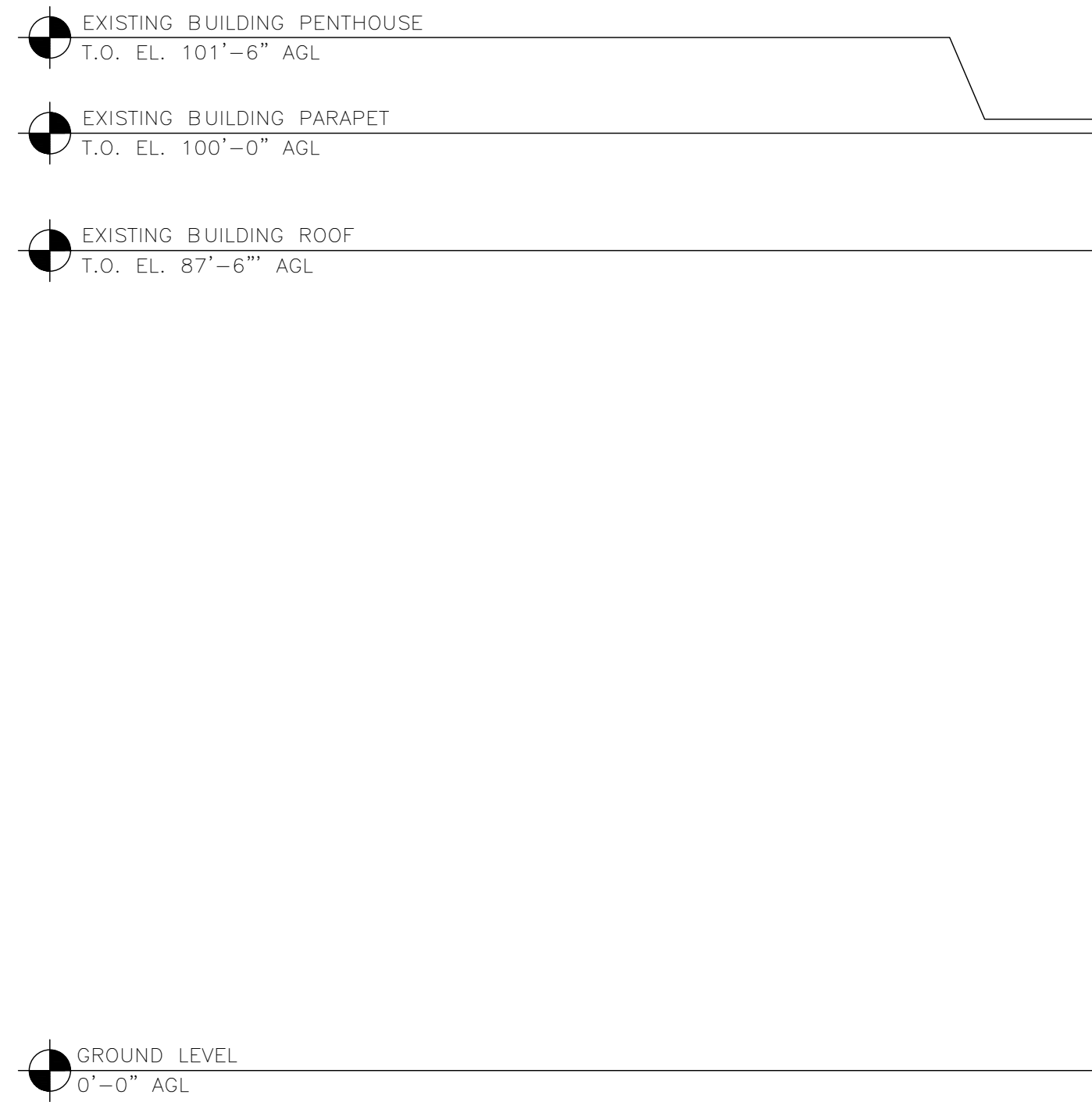
A&E PROJECT NUMBER  
SFSF000280A

DISH Wireless L.L.C.  
PROJECT INFORMATION  
SFSF000280A  
50 OLD COURTHOUSE SQ.  
SANTA ROSA, CA 95404

SHEET TITLE  
NORTHWEST ELEVATIONS

SHEET NUMBER  
**A-4**

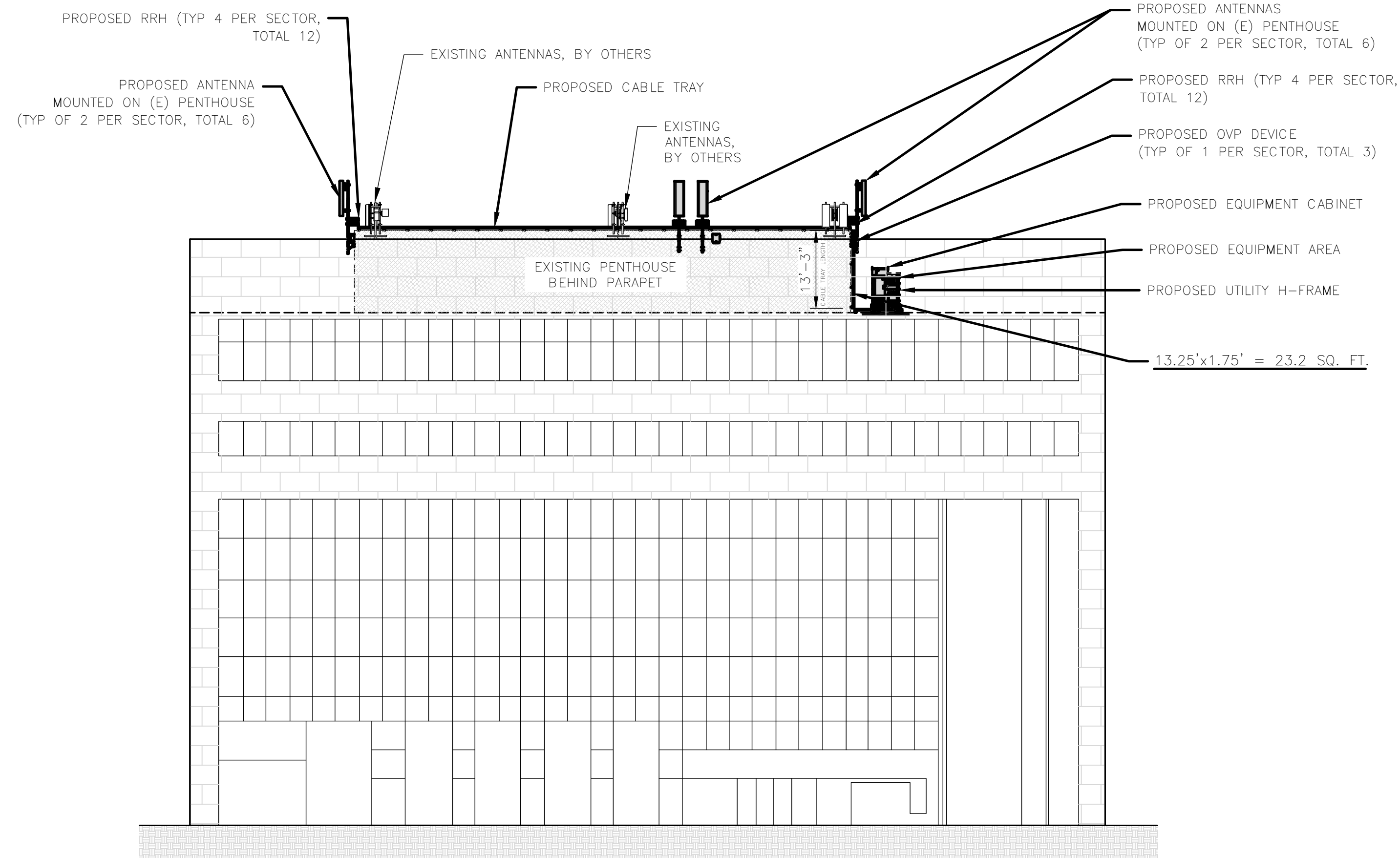
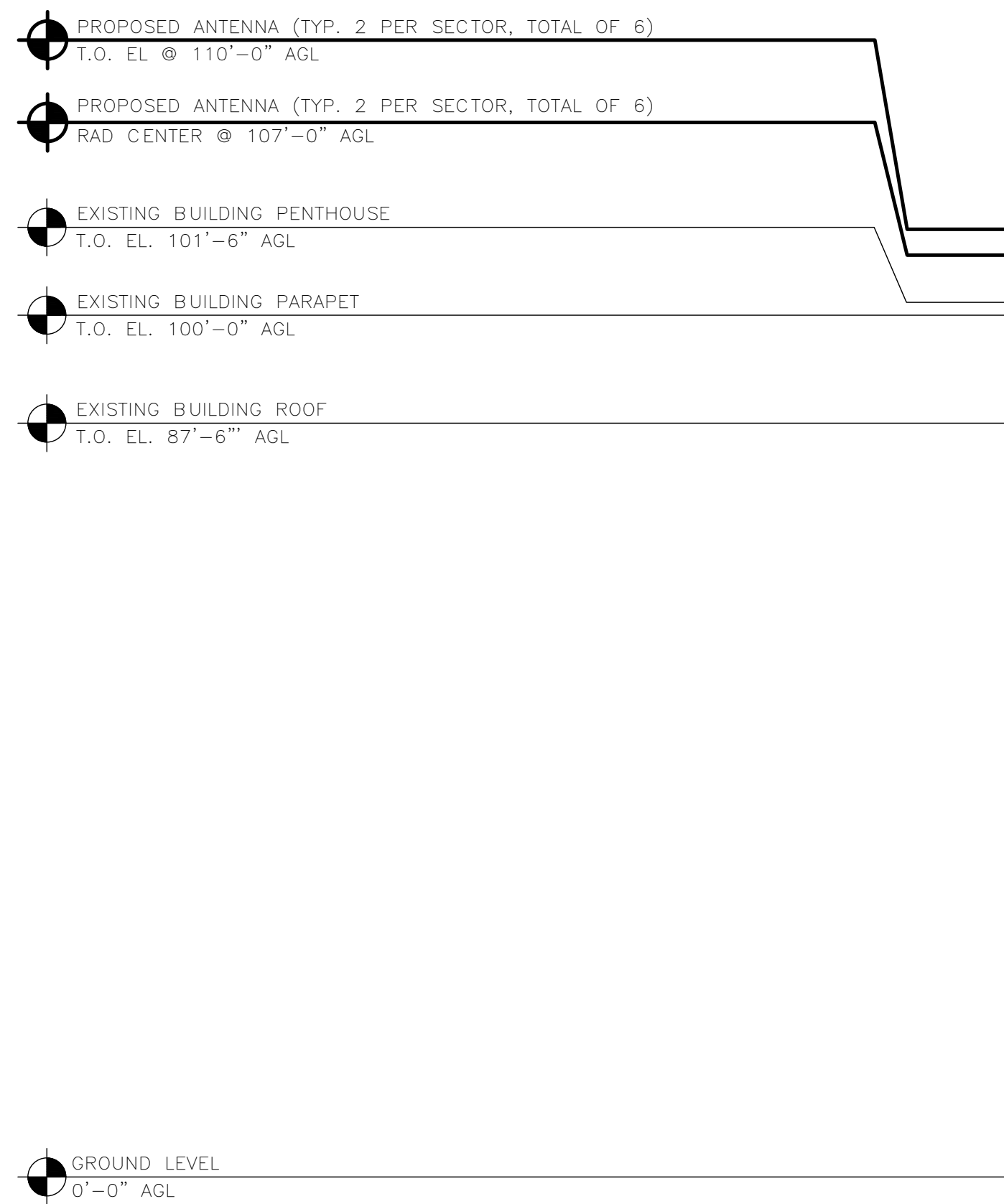




EXISTING SOUTHWEST ELEVATION



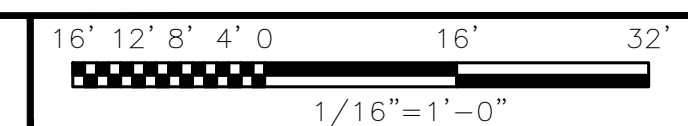
1



NOTES

1. CONTRACTOR SHALL FIELD VERIFY ALL DIMENSIONS.
2. CONTRACTOR SHALL MAINTAIN A 10'-0" MINIMUM SEPARATION BETWEEN THE PROPOSED GPS UNIT, TRANSMITTING ANTENNAS AND EXISTING GPS UNITS.

PROPOSED SOUTHWEST ELEVATION



2



5701 SOUTH SANTA FE DRIVE  
LITTLETON, CO 80120



2840 HOWE ROAD, SUITE E  
MARTINEZ, CA 94553  
www.TheCBRGroup.com

IT IS A VIOLATION OF LAW FOR ANY PERSON, UNLESS THEY ARE ACTING UNDER THE DIRECTION OF A LICENSED PROFESSIONAL ENGINEER, TO ALTER THIS DOCUMENT.

DRAWN BY: CHECKED BY: APPROVED BY:  
JDL/IK --- ---

RFDS REV #: 11/17/2021 REV 3

ZONING DOCUMENTS

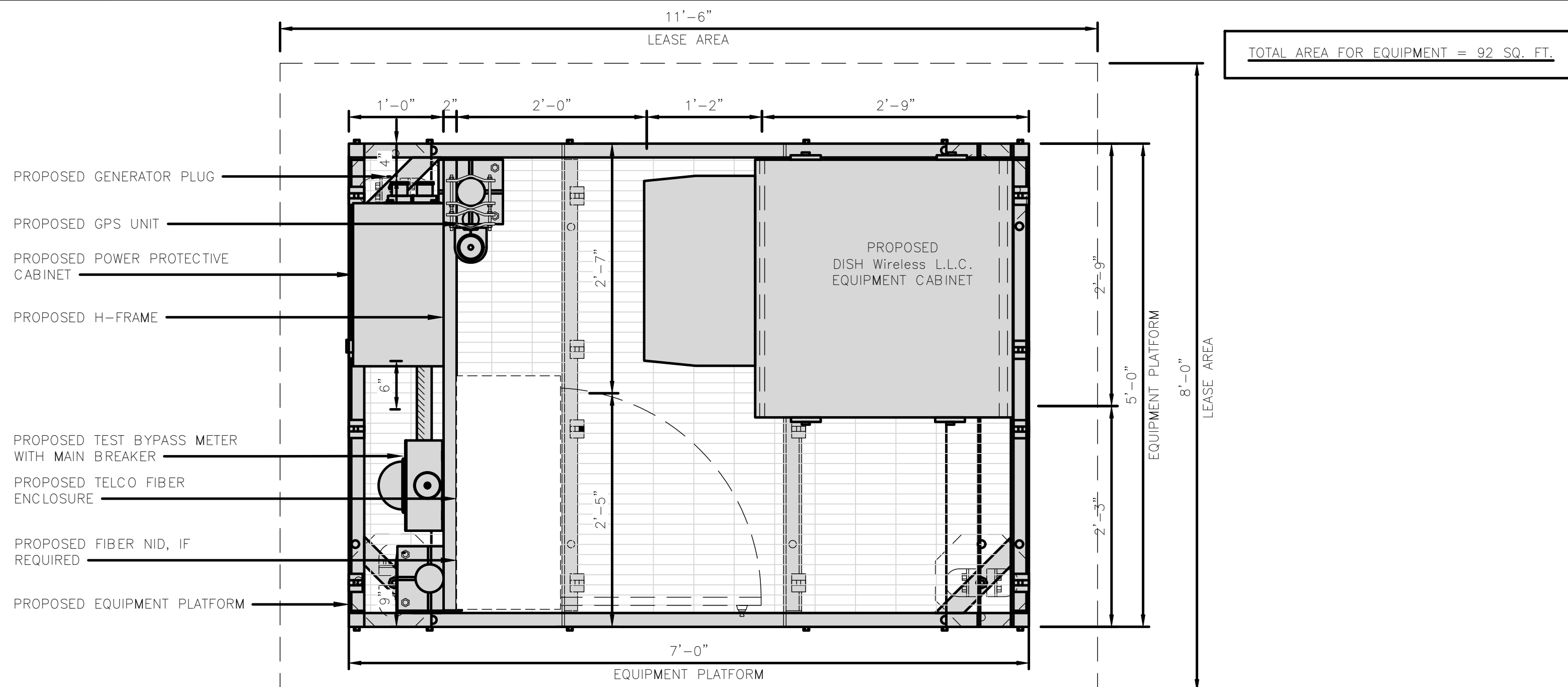
| SUBMITTALS |            |                           |
|------------|------------|---------------------------|
| REV        | DATE       | DESCRIPTION               |
| A          | 11/22/2021 | 90%ZD'S ISSUED FOR REVIEW |
| B          | 11/29/2021 | 100% ZONING DRAWINGS      |
|            |            |                           |
|            |            |                           |

A&E PROJECT NUMBER  
SFSF000280A

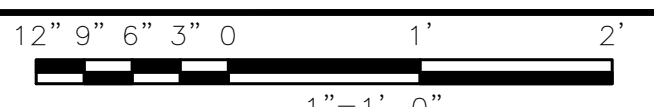
DISH Wireless L.L.C.  
PROJECT INFORMATION  
SFSF000280A  
50 OLD COURTHOUSE SQ.  
SANTA ROSA, CA 95404

SHEET TITLE  
SOUTHWEST ELEVATIONS

SHEET NUMBER  
**A-5**



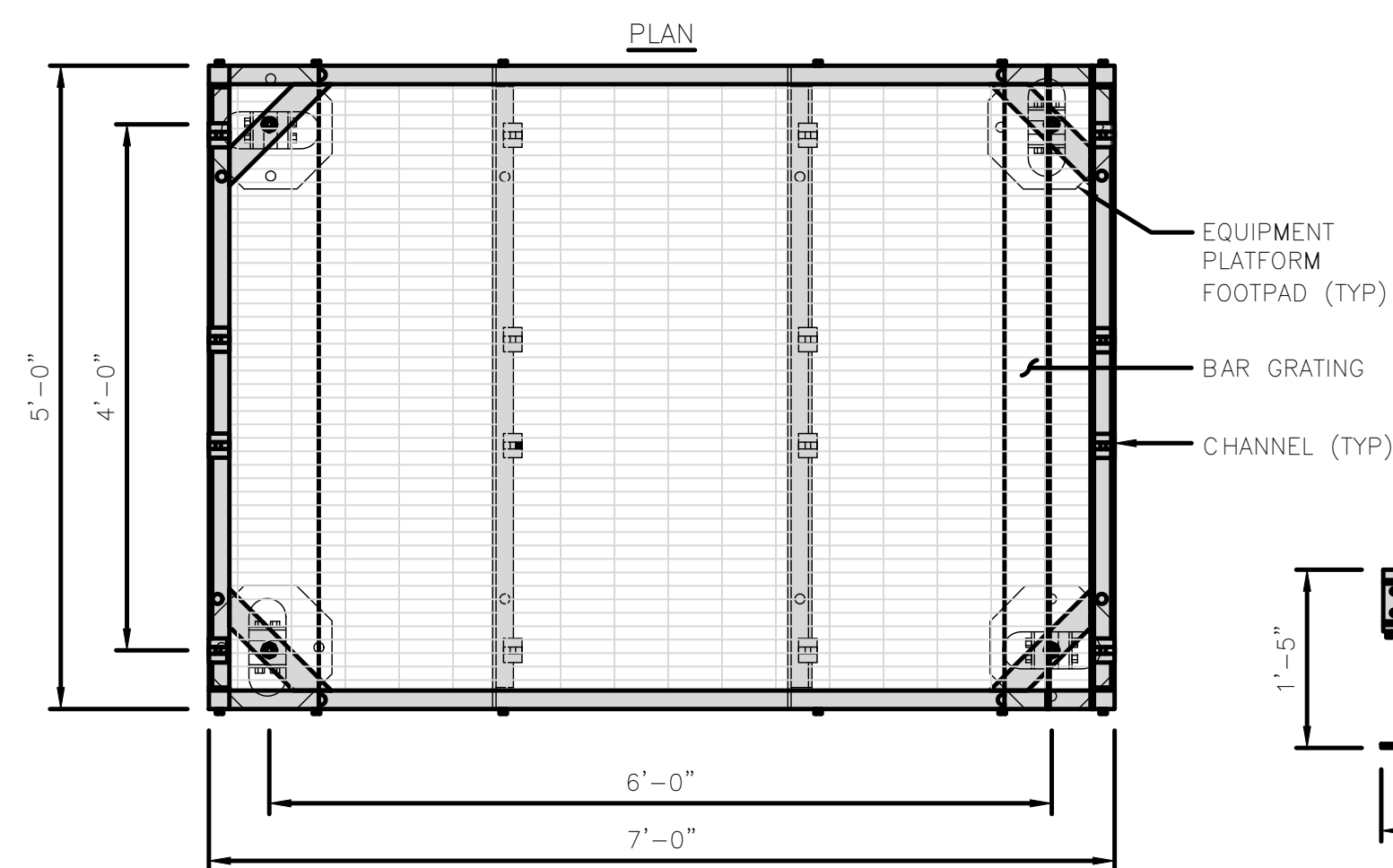
PLATFORM EQUIPMENT PLAN



1

|                                     |             |
|-------------------------------------|-------------|
| COMMSCOPE MTC4045LP<br>5X7 PLATFORM |             |
| DIMENSIONS (HxWxD)                  | 16"x84"x60" |
| TOTAL WEIGHT                        | 423 LBS     |

NOTE:  
GC TO PROVIDE EXTENDED  
THREAD FOR PLATFORM IF  
REQUIRED HEIGHT EXCEEDS 17"



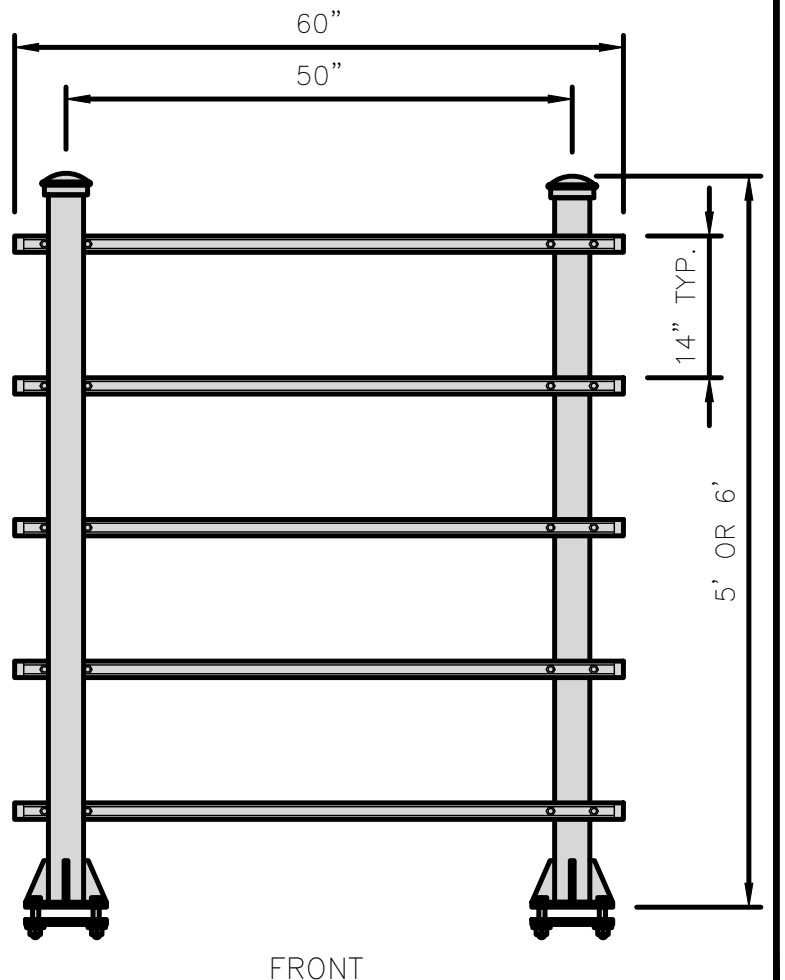
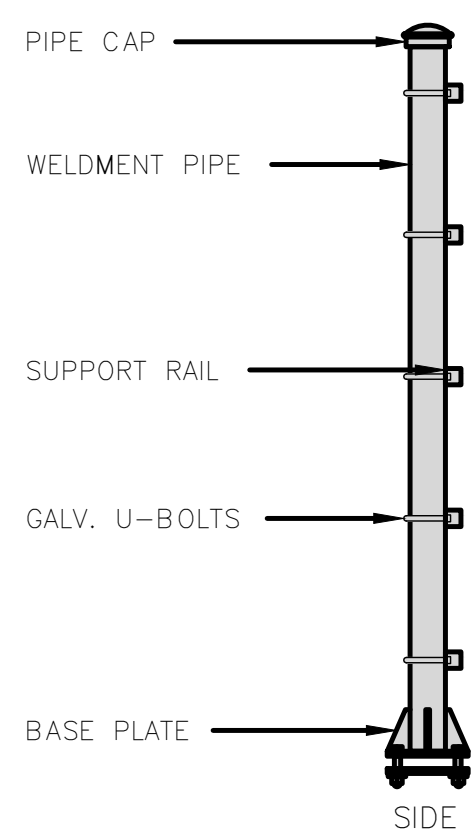
PLATFORM DETAIL

NO SCALE

2

|                                  |           |
|----------------------------------|-----------|
| COMMSCOPE MTC4045HFLD<br>H-FRAME |           |
| UNISTRUT/SUPPORT RAILS QTY       | 5         |
| WEIGHT                           | 59.74 lbs |

NOTE:  
OR DISH Wireless L.L.C.  
APPROVED EQUIVALENT



H-FRAME DETAIL

NO SCALE

3

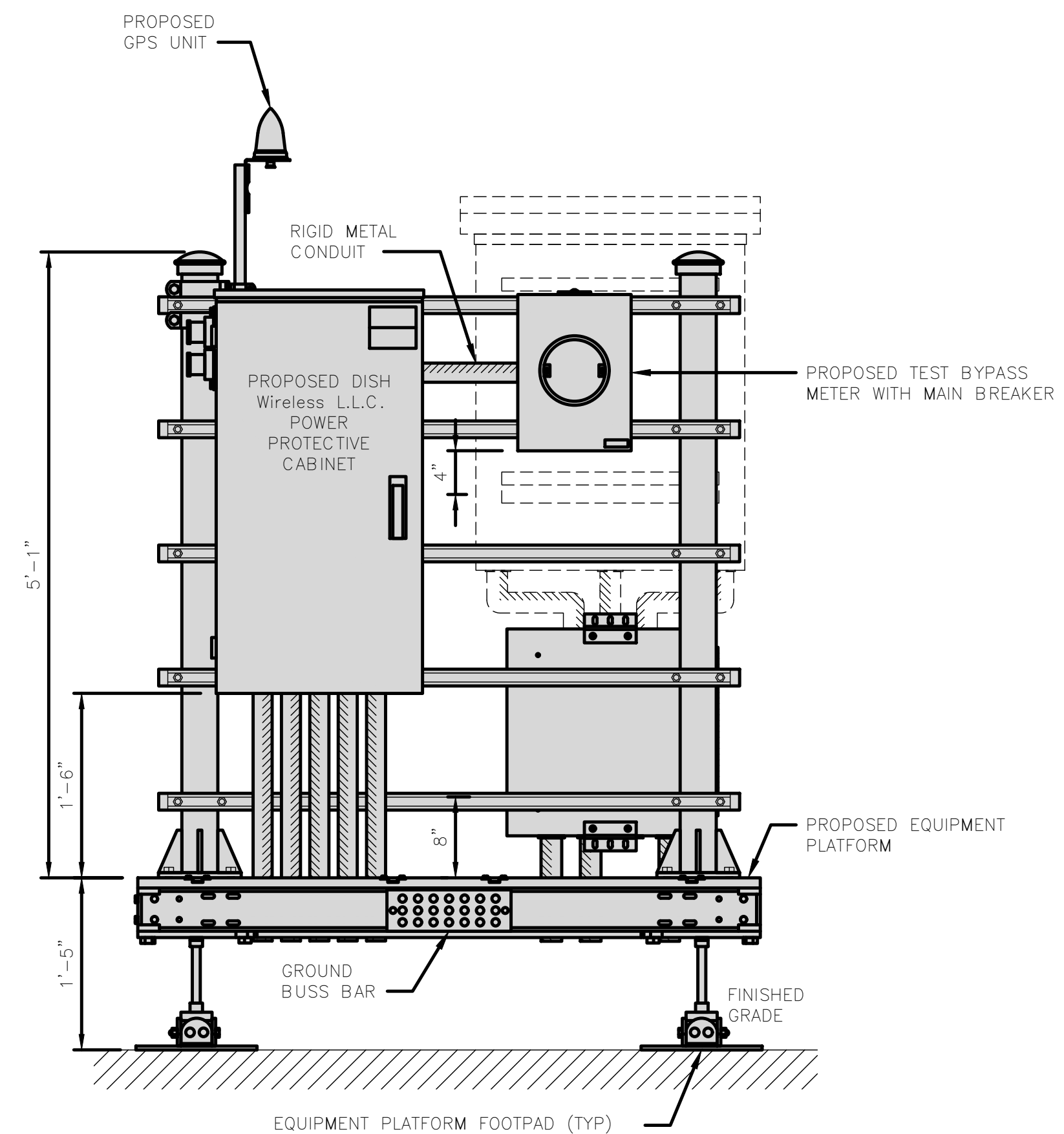
NOT USED

NO SCALE

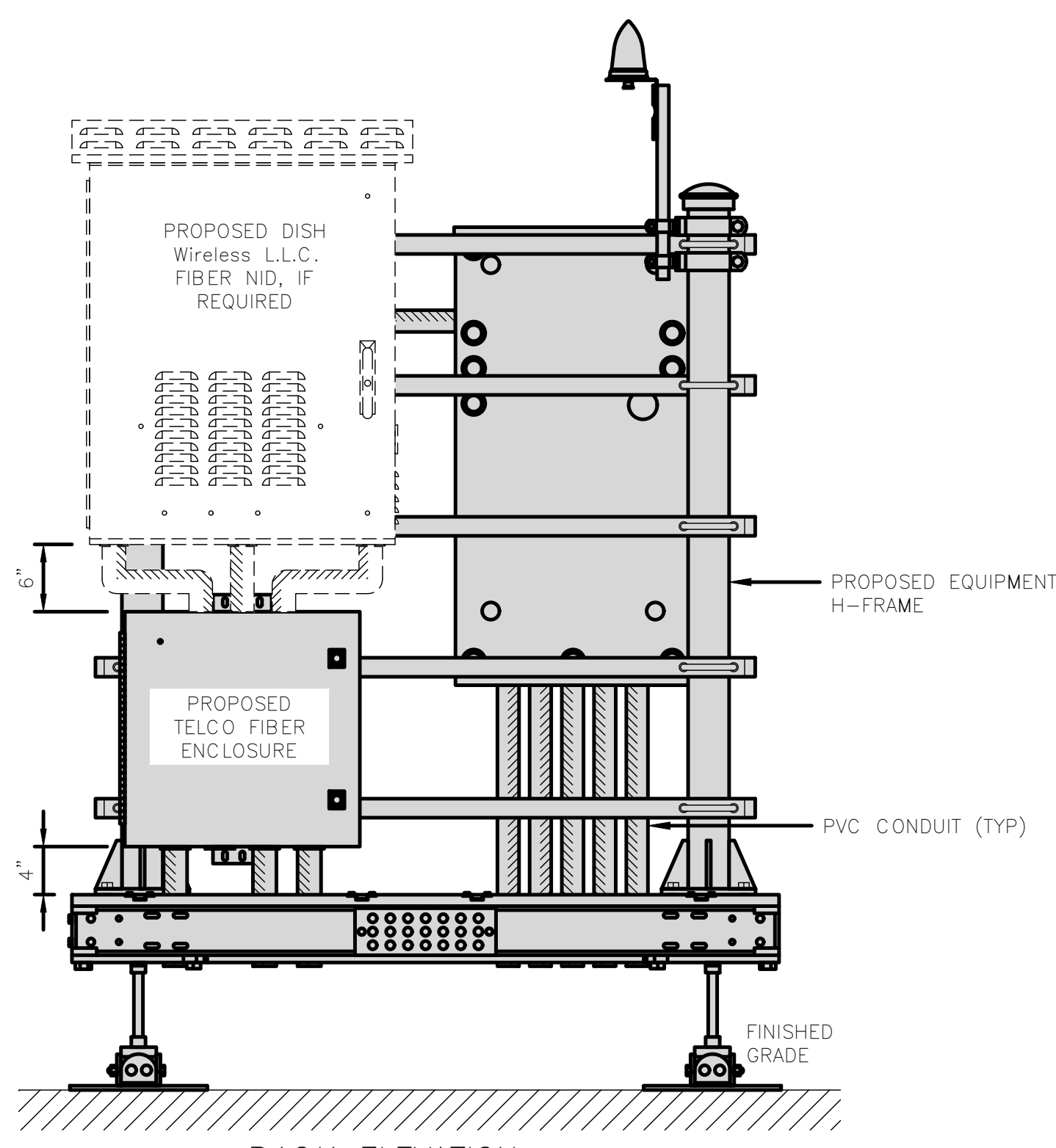
4

NOTE

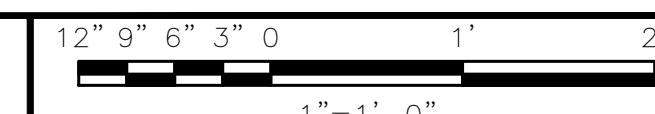
1. EQUIPMENT CABINET OMITTED FOR CLARITY



FRONT ELEVATION



BACK ELEVATION



5

**dish**  
wireless.

5701 SOUTH SANTA FE DRIVE  
LITTLETON, CO 80120

**THE**  
**CBR**  
GROUP

2840 HOWE ROAD, SUITE E  
MARTINEZ, CA 94553  
www.TheCBRGroup.com

IT IS A VIOLATION OF LAW FOR ANY PERSON,  
UNLESS THEY ARE ACTING UNDER THE DIRECTION  
OF A LICENSED PROFESSIONAL ENGINEER,  
TO ALTER THIS DOCUMENT.

DRAWN BY: CHECKED BY: APPROVED BY:

JDL/IK --- ---

RFDS REV #: 11/17/2021 REV 3

ZONING  
DOCUMENTS

| SUBMITTALS |            |                           |
|------------|------------|---------------------------|
| REV        | DATE       | DESCRIPTION               |
| A          | 11/22/2021 | 90%ZD'S ISSUED FOR REVIEW |
| B          | 11/29/2021 | 100% ZONING DRAWINGS      |

A&E PROJECT NUMBER  
SFSF000280A

DISH Wireless L.L.C.  
PROJECT INFORMATION

SFSF000280A  
50 OLD COURTHOUSE SQ.  
SANTA ROSA, CA 95404

SHEET TITLE  
EQUIPMENT PLATFORM AND  
H-FRAME DETAILS

SHEET NUMBER

**A-6**