



# Professional Services Agreement Approval: Emergency Generators for Water and Wastewater Facilities

NEED • HISTORY • SCOPE • COST & SCHEDULE • RECOMMENDATION

---

BOARD OF PUBLIC UTILITIES MEETING

JUNE 18, 2020

ADAM RAUSCH, PHD, ASSISTANT ENGINEER

---

A thick grey horizontal bar at the bottom of the slide.

# Project Need

## Critical Infrastructure:

- Water pump stations & sewer lift stations
- Pumps powered by grid or generators

## Lessons from the 2017 Wildfire:

- Logistical difficulties with propane refueling
- Mechanical issues with dual-fuel generators
- Diesel generators did not have these problems



***This project seeks to replace dual-fuel generators and outdated diesel generators to increase resiliency of critical infrastructure to future hazardous events.***

# Project History: Funding

---

## **FEMA Funding**

- August 2018: City applied for FEMA Hazard Mitigation funds through Cal OES
- November 2019: these funds were approved.
- This begins a 2-year performance period.
- Grant reimburses 75% of certain project costs, including design.
- Maximum reimbursement of about \$3.5M.

# Project History: Design Proposals

---

## **Request for Proposals**

- December 2019: City released an RFP for consultant design; received 3 proposals January 2020.
- Review board included engineers and quality control associates with generator project experience.

## **Brelje & Race Selected**

- Best understanding of project
- Superior project team qualifications
- Greatest demonstrated experience on similar projects

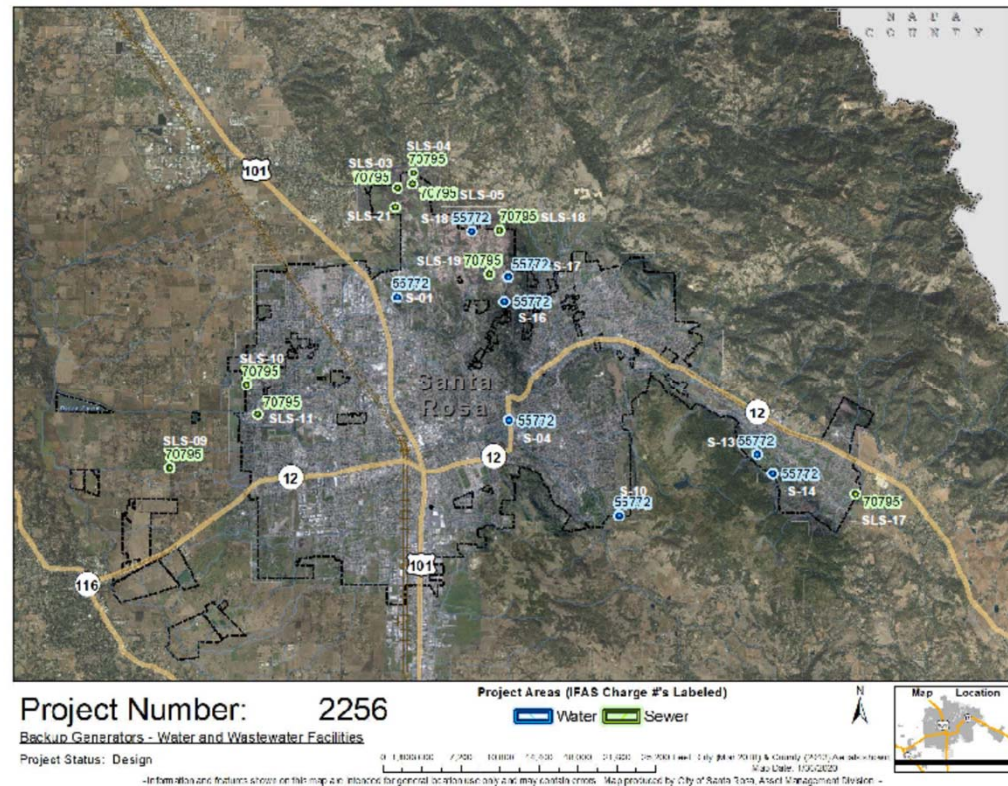
# Project and PSA Scope

## Proposed Project

- 8 water pump stations, 10 sewer lift stations
- 15 dual-fuel, 3 outdated diesel
- Related equipment

## Design PSA

- Civil, mechanical, structural, electrical design
- Preliminary design through creation of construction docs



# Cost and Schedule

---

## **Contract Cost**

- The recommended Brelje & Race PSA cost is not to exceed \$485,500.
- Consistent with our initial engineering estimate: \$497,000
- Below FEMA-approved design budget: \$775,000

## **Fiscal Impact**

- Approval of the PSA would have no impact on the budget. Funds for this project were previously appropriated in the FY2019-20 Capital Improvement Plan budget.

## **Schedule**

- Should BPU approve this PSA June 18<sup>th</sup>, we estimate complete design by January 2021.
- Construction estimated March 2021 to August 2022.
- We expect to apply for and receive an extension to the FEMA period of performance.

## Recommendation

---

- ❖ It is recommended by the Transportation and Public Works Department, the Water Department, and the Contract Review Subcommittee that the Board, by motion, approve the Professional Services Agreement (PSA) with Brelje & Race Consulting Engineers, of Santa Rosa, CA, for design services for Backup Generators at Water and Wastewater Facilities in the amount not to exceed \$485,500.00.

Thank you

