

PENSTEMON PLACE

SANTA ROSA, CA.

ARBORIST'S REPORT Tree Inventory & Evaluation

May 21, 2018

Prepared For:

Penstemon Place LLC

Submitted By:

Becky Duckles, ISA Certified Consulting Arborist #WE-0796A

Sebastopol, CA

707.829.0555 PH.

BECKY DUCKLES
CONSULTING ARBORIST & LANDSCAPE ADVISOR
SEBASTOPOL, CA 707.829.0555 PH

Penstemon Place
Santa Rosa, Ca

ARBORIST'S SUMMARY
May 21, 2018

This site contains a large pasture area and several older, modest ranch homes. Three very large, heritage valley oaks will be preserved, and others near Linwood Ave. will be preserved if possible, though if they lose too many roots during excavation for the adjoining road section, the monitoring arborist may declare them unsafe to retain and they will be removed. The landscape architects and engineers have adjusted their plans to preserve these trees and others where possible, given site constraints.

I have reviewed the Tentative Map for the project dated May 2018 by Carlile Macy, and discussed grading and site development with the landscape architect. We will continue to try to arrive at solutions to minimize impact on the oaks near Linwood Ave. during construction of street improvements. A consulting arborist will be present during work done within their driplines to assess how many roots are encountered that must be cut. A note stating this will be printed on construction plans to alert the contractors and supervisors to schedule the arborist. If the trees are deemed by the arborist to be unstable or hazardous after that work they will be removed and mitigated.

The enclosed Tree Inventory shows all trees potentially impacted by construction, with common and botanical names, diameters at breast height (4'-6" unless noted otherwise), and condition and structure ratings. Comments are given regarding whether trees are to be removed or preserved, and whether they are protected or not by Santa Rosa's tree ordinance. Sheet L-1 of the Preliminary Landscape Master Plan and the Tentative Map show existing tree numbers as they relate to the tree inventory and spreadsheet, as they are tagged on site. Tree protection fencing will be installed at the outer edge of the protected tree driplines prior to construction, or at the limit of required access on Linwood. Project landscape architects are providing a list of trees to be removed with mitigation calculations. Locations, species and sizes of mitigation trees are shown on project landscape plans.

Please contact me if clarification or further information is needed.

Respectfully submitted,

Becky Duckles

Becky Duckles, Project Arborist
ISA Certified Consulting Arborist #WE-0796A

PENSTEMON PLACE - SANTA ROSA

TREE #	SPECIES	TRUNK DIAMETER (In.)	GENERAL HEALTH/CONDITIO	STRUCTURAL INTEGRITY	CONSTRUCTION IMPACT/RECOMMENDATIONS
1	Valley Oak/ <i>Quercus lobata</i>	34"	Good	Good	To be preserved; site plan has been developed to protect; heritage tree
2	Valley Oak/ <i>Quercus lobata</i>	30"	Good/Excellent	Good	To be preserved; site plan has been developed to protect; heritage tree
3	Coast Live Oak/ <i>Quercus agrifolia</i>	12,18"	Good/Excellent	Good	details of retaining wall and adjacent construction have been refined to protect tree
4	Black Walnut/ <i>Juglans nigra</i>	5,10,11"	Good	Good	To be removed for construction
5	Black Walnut/ <i>Juglans nigra</i>	6,7,7,8"	Fair	Fair	To be removed for construction
6	Valley Oak/ <i>Quercus lobata</i>	28"	Good/Excellent	Good/Excellent	Will attempt to preserve; may have to be removed; minimize depth of road section/paving; heritage tree
7	Coast Live Oak/ <i>Quercus agrifolia</i>	6,7" @ 3'	Good/Excellent	Good	To be removed for construction
8	Valley Oak/ <i>Quercus lobata</i>	5"	Good/Excellent	Good/Excellent	To be removed for construction
9	Black Acacia/ <i>Acacia melanoxylon</i>	6+ multi	Fair	Fair	To be removed for construction; exempt tree
10	Cherry/ <i>Prunus</i> sp.	4"+ multi	Fair	Fair	To be removed for construction; exempt tree
11	Valley Oak/ <i>Quercus lobata</i>	9"	Excellent	Good	To be removed for construction; heritage tree
12	Apple/ <i>Malus</i> sp.	3,4,6,7"	Good	Fair/Good	To be removed for construction; exempt tree
13	Mexican Fan Palm/ <i>Washingtonia robusta</i>	17"	Good	Fair/Good	To be removed for construction
14	Valley Oak/ <i>Quercus lobata</i>	12"	Good	Good	To be removed for construction; heritage tree
15	London Plane/ <i>Platanus x acerifolia</i>	25"	Excellent	Excellent	To be removed for construction
16	London Plane/ <i>Platanus x acerifolia</i>	30"	Excellent	Excellent	To be removed for construction
17	Coast Live Oak/ <i>Quercus agrifolia</i>	17"	Excellent	Good/Excellent	To be removed for construction
18	Coast Live Oak/ <i>Quercus agrifolia</i>	7"	Good	Good	To be removed for construction
19	Coast Live Oak/ <i>Quercus agrifolia</i>	13"	Good	Poor; fallen, growing horizontally	To be removed for construction
20	Coast Live Oak/ <i>Quercus agrifolia</i>	5"	Good/Excellent	Fair; poor form	To be removed for construction
21	London Plane/ <i>Platanus x acerifolia</i>	24"	Good/Excellent	Good/Excellent	To be removed for construction
22	Valley Oak/ <i>Quercus lobata</i>	4,4,5,6,6,7"	Good	Fair; multi-trunk	To be removed for construction; heritage tree
23	Coast Live Oak/ <i>Quercus agrifolia</i>	15" @ 2'	Excellent	Good	To be removed for construction
24	Valley Oak/ <i>Quercus lobata</i>	7"	Excellent	Good/Excellent	To be removed for construction; heritage tree
25	Valley Oak/ <i>Quercus lobata</i>	6"	Excellent	Excellent	To be removed for construction; heritage tree

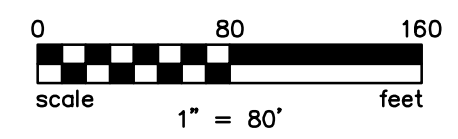
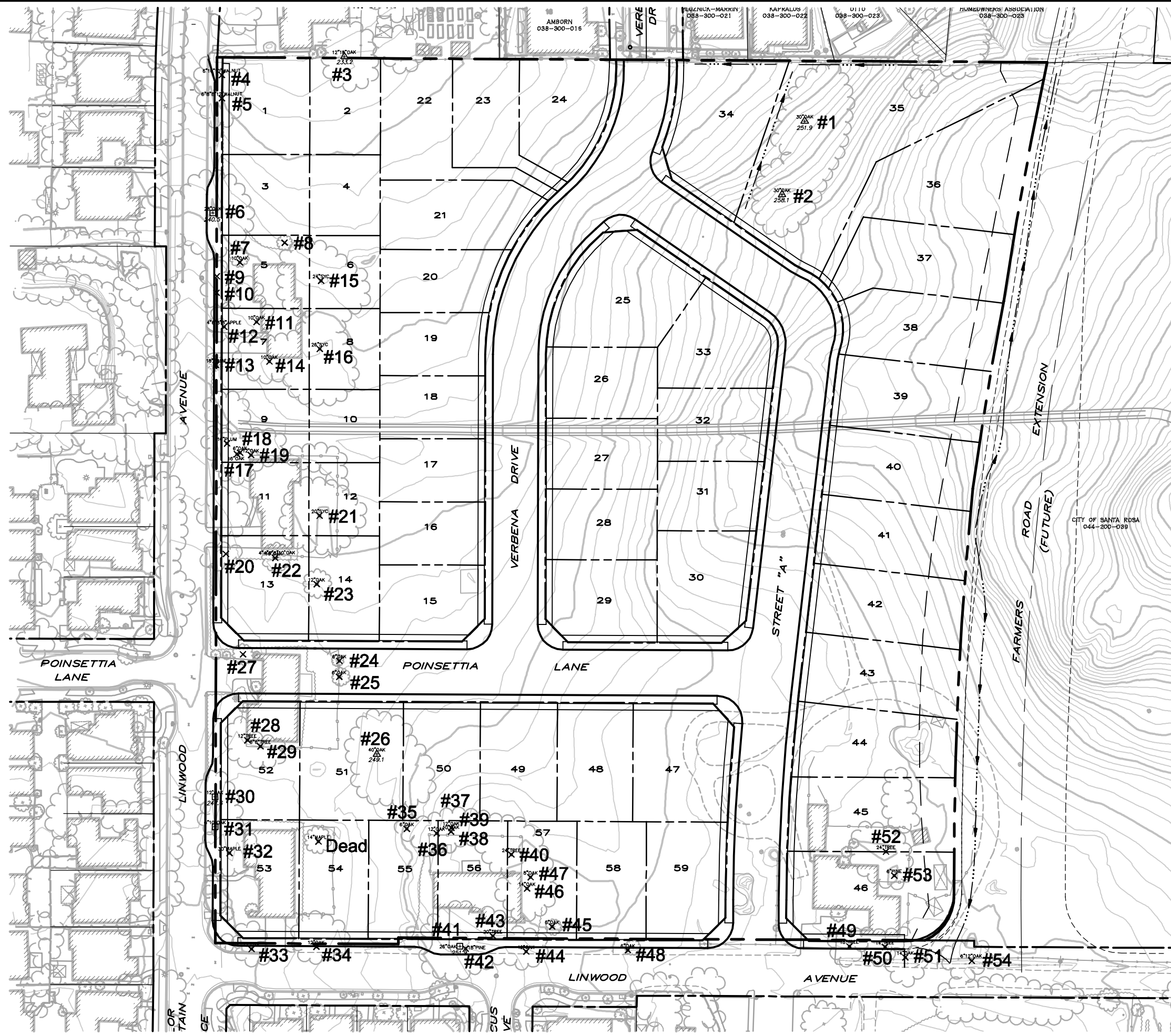
PENSTEMON PLACE - SANTA ROSA

TREE #	SPECIES	TRUNK DIAMETER (In.)	GENERAL HEALTH/CONDITIO	STRUCTURAL INTEGRITY	CONSTRUCTION IMPACT/RECOMMENDATIONS
26	Valley Oak/ <i>Quercus lobata</i>	39"	Good/Excellent	Good	To be preserved; low-branched on south & east; may need clearance pruning; heritage tree
27	Hackberry/ <i>Celtis</i> sp.	5"	Good/Excellent	Good	To be removed for construction
28	Black Acacia/ <i>Acacia melanoxylon</i>	14"	Good	Fair	To be removed for construction; exempt tree
29	Black Acacia/ <i>Acacia melanoxylon</i>	7,8"	Good	Fair	To be removed for construction; exempt tree
30	Valley Oak/ <i>Quercus lobata</i>	13"	Good	Good/Excellent	May be removed; minimize depth of road section/paving; monitor grading; heritage tree
31	Coast Live Oak/ <i>Quercus agrifolia</i>	7,11"	Good/Excellent	Good	May be removed; minimize depth of road section/paving; will need clearance pruning; heritage tree
32	Silver Maple/ <i>Acer saccharinum</i>	35"	Poor	Poor; fallen, decayed	Fallen, decayed; not viable, exempt tree; to be removed
33	Coast Live Oak/ <i>Quercus agrifolia</i>	10,14"	Excellent	Good	To be removed for construction; heritage tree
34	Coast Live Oak/ <i>Quercus agrifolia</i>	12"	Excellent	Fair	To be removed for construction
35	Valley Oak/ <i>Quercus lobata</i>	7"	Good/Excellent	Good	To be removed for construction; heritage tree
36	Coast Live Oak/ <i>Quercus agrifolia</i>	6"	Good/Excellent	Good	To be removed for construction
37	Valley Oak/ <i>Quercus lobata</i>	12"	Good	Good	To be removed for construction; heritage tree
38	Valley Oak/ <i>Quercus lobata</i>	9"	Good/Excellent	Good/Excellent	To be removed for construction; heritage tree
39	Valley Oak/ <i>Quercus lobata</i>	13"	Good/Excellent	Good/Excellent	To be removed for construction; heritage tree
40	Fruitless Mulberry/ <i>Morus alba</i>	20" @ 3'	Good/Excellent	Fair	To be removed for construction; exempt tree
41	Coast Live Oak/ <i>Quercus agrifolia</i>	28" @ 3'	Good/Excellent	Good	May have to be removed; minimize depth of road section/paving; monitor grading; will need clearance pruning; heritage tree
42	Monterey Pine/ <i>Pinus radiata</i>	20"	Good	Good	To be removed for construction; exempt tree
43	Fruitless Mulberry/ <i>Morus alba</i>	23"	Good	Fair	To be removed for construction; exempt tree
44	Coast Live Oak/ <i>Quercus agrifolia</i>	8,11"	Excellent	Good	To be removed for construction; heritage tree
45	Coast Live Oak/ <i>Quercus agrifolia</i>	7"	Excellent	Good	To be removed for construction
46	Coast Live Oak/ <i>Quercus agrifolia</i>	21"	Excellent	Good/Excellent	To be removed for construction; heritage tree
47	Coast Live Oak/ <i>Quercus agrifolia</i>	10"	Excellent	Good	To be removed for construction
48	Valley Oak/ <i>Quercus lobata</i>	4"	Good/Excellent	Good	To be removed for construction
49	Fruitless Mulberry/ <i>Morus alba</i>	18"	Good	Good	To be removed for construction; exempt tree

PENSTEMON PLACE - SANTA ROSA

TREE #	SPECIES	TRUNK DIAMETER (In.)	GENERAL HEALTH/CONDITIO	STRUCTURAL INTEGRITY	CONSTRUCTION IMPACT/RECOMMENDATIONS
50	Fruitless Mulberry/ <i>Morus alba</i>	15"	Good	Fair	To be removed for construction; exempt tree
51	Coast Live Oak/ <i>Quercus agrifolia</i>	15"	Fair	Fair	To be removed for construction
52	Fruitless Mulberry/ <i>Morus alba</i>	27"	Good	Fair	To be removed for construction; exempt tree
53	Monterey Pine/ <i>Pinus radiata</i> Coast Live Oak/ <i>Quercus</i>	7"	Good	Good	To be removed for construction; exempt tree
54	<i>agrifolia</i>	5,7,11"	Good/Excellent	Good	To be removed for construction; heritage tree

AutoCAD file name: 15013-EXH-Ex_Trees.dwg | [ref files: 15013-TM-HQ; 15013-TP-W-FARMERS; 15013-BNDY]
Copyright © Carlie • Macy



- TREE STATUS**
- △ SAVE
 - × REMOVE
 - ⊕ MAYBE REMOVED

TREE LOCATION MAP PENSTEMON PLACE

SANTA ROSA, CALIFORNIA
FEBRUARY 2017

PENSTEMON PLACE
Santa Rosa, Ca

TREE PROTECTION NOTES

1. Plastic or chain link tree protection fencing shall be installed at the driplines of trees to remain (or the outer edge of the dripline of groups of trees). If it must be removed during construction for access, it shall be replaced immediately after work is completed.
2. Pruning should be the minimum necessary for hazard reduction or necessary access (i.e. the removal of deadwood 2" and larger, etc.), clearance, and crown restoration. It should be done by trained, qualified tree workers according to ISA Pruning Guidelines, prior to construction activity and fencing.
3. Where trenching, excavation, or other construction must occur within the driplines of protected trees to remain, a monitoring arborist should be notified ahead of the work (24-48 hours) to be present during the work. If any roots larger than 1" are encountered that cannot be preserved, they should be cut cleanly across the face of the root with a sharp saw. If required removal of roots may destabilize existing trees near road improvements, monitoring arborist may request removal of trees to reduce hazard. If such removals occur, they will be documented, and mitigated as per ordinance.
4. Where drainage swales or utilities must pass within tree driplines, they should be hand dug or excavated under the supervision of an arborist. Roots 2"+ should be preserved where possible.
5. Wood chip mulch generated from pruning should be spread under protected trees to serve as a permanent top dressing and mulch. It should be augmented to provide a 4" layer of mulch within the driplines of all trees to remain within the limits of construction.
6. No parking, storage, or disposal of materials (such as concrete slurry, paint, etc.), or other construction activity shall occur within driplines of protected trees to remain.