

# Restoring Water Service to the Advisory Area

Board of Public Utilities Meeting  
September 20, 2018



OUR FUTURE IN EVERY DRÖP

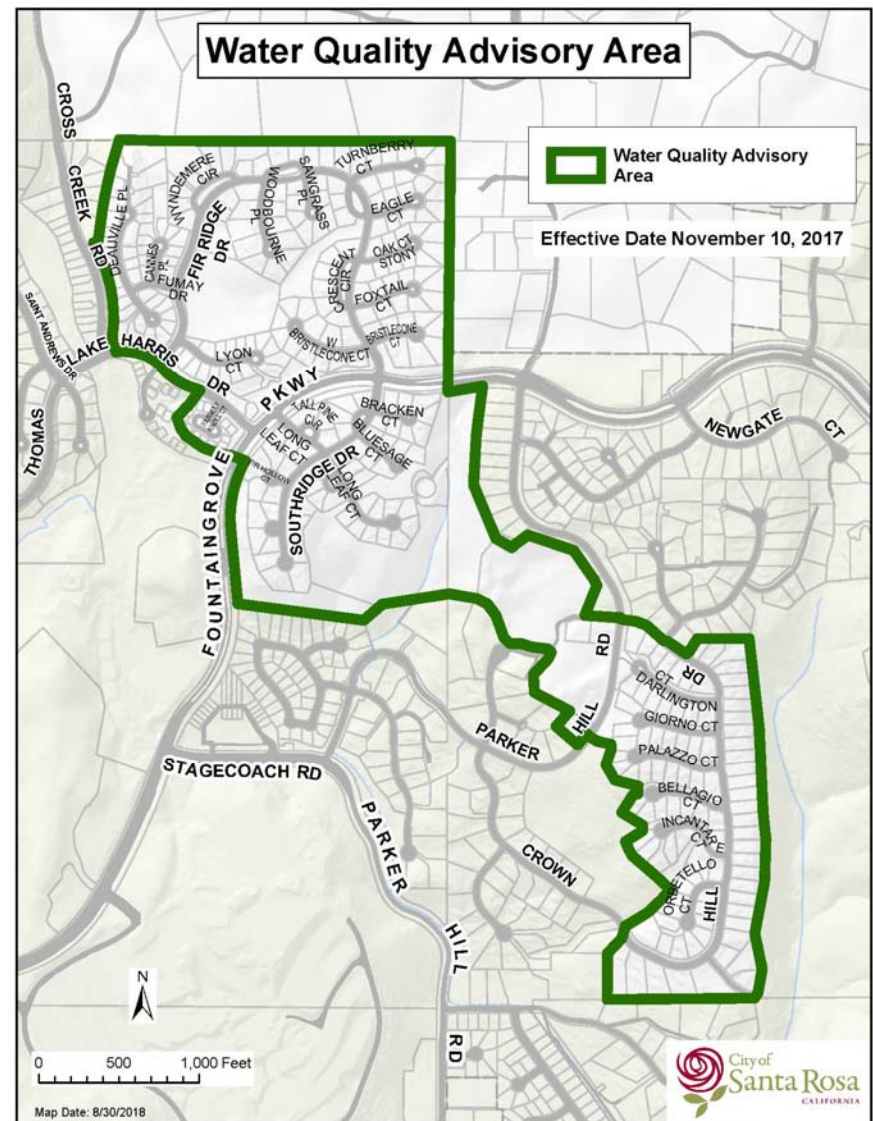
# Overview

- Background
- Status of Pathway to Repair & Rebuild Process
- Data Review & Effectiveness of Replacing Service Lines
- Plan for Lifting of the Advisory
- Next Steps & Ongoing Monitoring

# Post-fire Water Quality Advisory

## Fountaingrove Area

- Odor complaint 11/08/2017
- Issued advisory 11/10/2017
- Additional precautions issued 1/23/2018



# Partner Agencies and Experts

- Sonoma County Public Health
- Sonoma County Water Agency
- California Division of Drinking Water
- U.S. Environmental Protection Agency
- Forensic Chemists
- Toxicologists
- National Water Quality Experts

# Investigative Sampling

## Water Quality Sampling Results

- Sample Station  
Samples taken at sample stations are representative of drinking water quality supplied to homes and businesses in the area.

## Investigative Sampling Results for Benzene

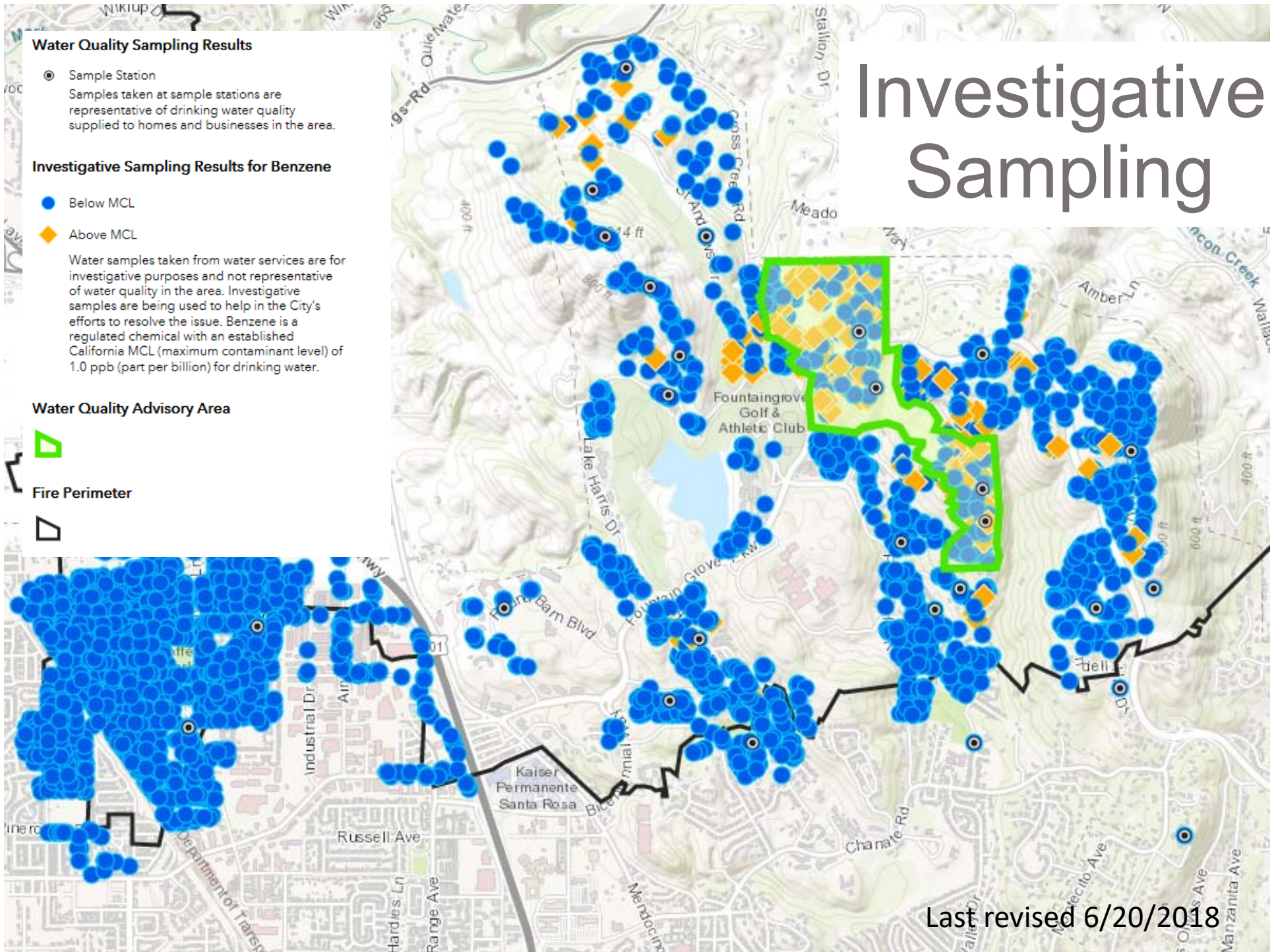
- Below MCL
- ◆ Above MCL

Water samples taken from water services are for investigative purposes and not representative of water quality in the area. Investigative samples are being used to help in the City's efforts to resolve the issue. Benzene is a regulated chemical with an established California MCL (maximum contaminant level) of 1.0 ppb (part per billion) for drinking water.

## Water Quality Advisory Area



## Fire Perimeter



Last revised 6/20/2018

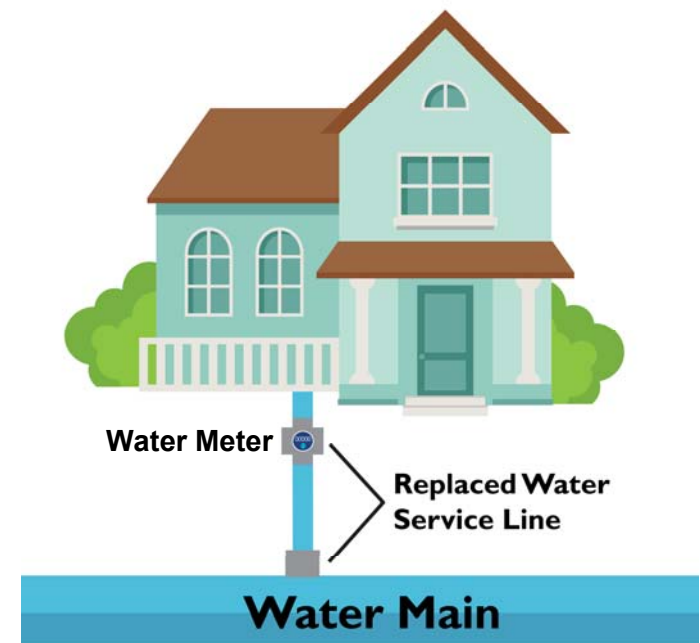
# Understanding the Source

- Melting and burning of plastics
- Smoke, soot, and ash
- Adhered and absorbed into water services and system components



# Path Toward Restoring Water Service

- Data driven approach
- Every water service line was replaced and re-sampled
- Targeted replacement of water system infrastructure
- Systematic flushing and sampling
- Water quality will continue to be routinely tested and monitored



# Replacing Water Services has Proven to be Successful

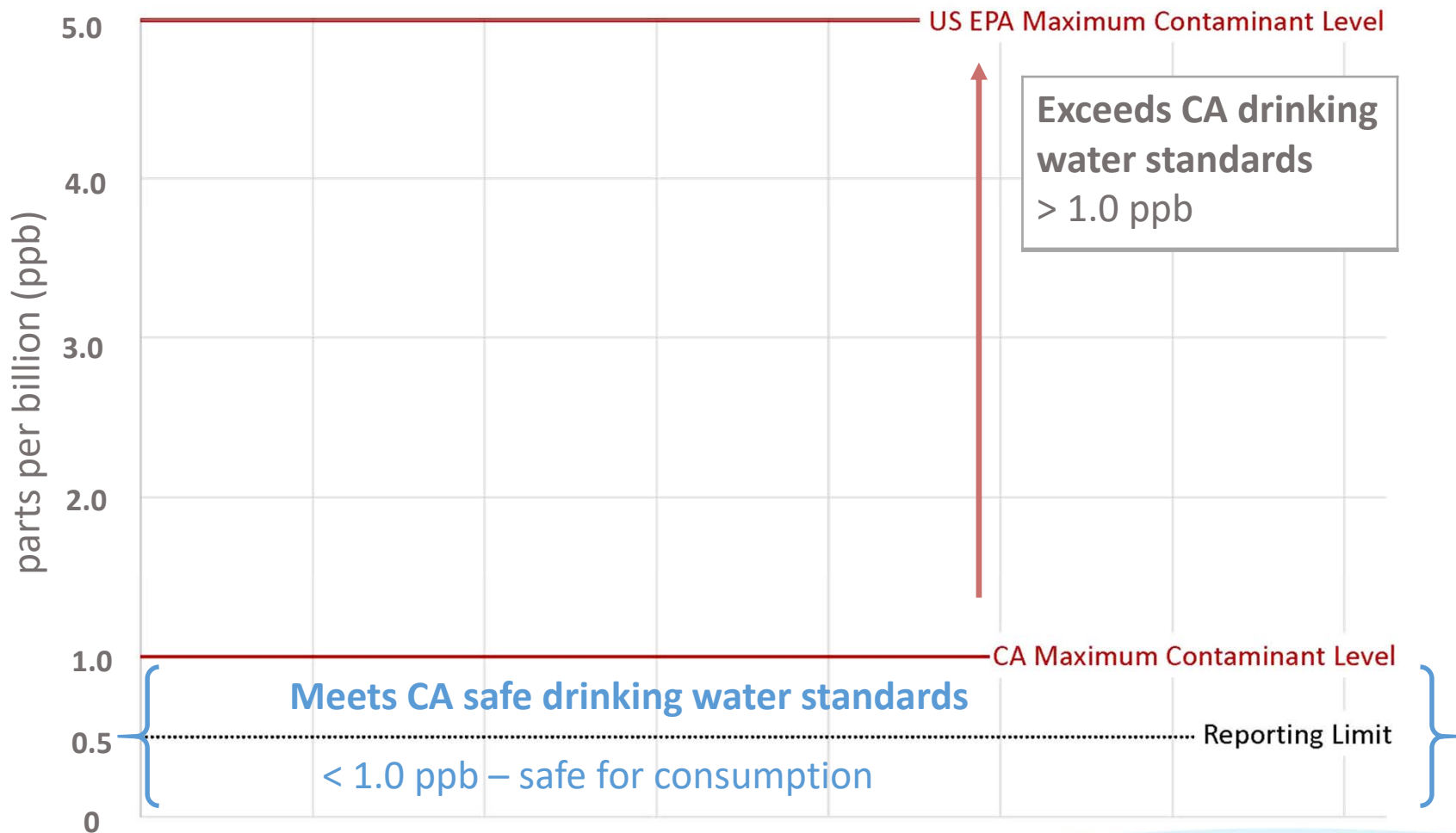




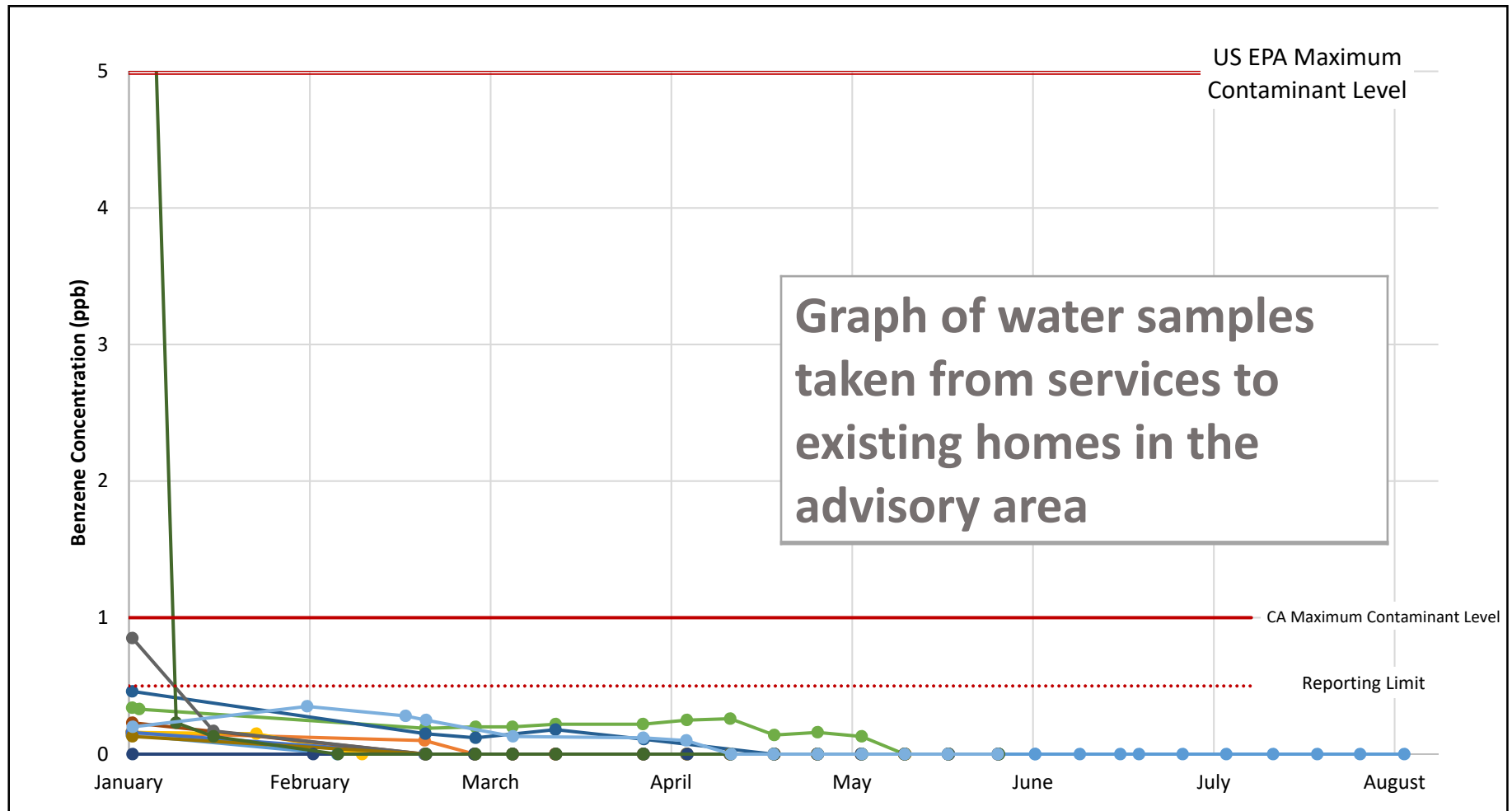
# Process for Lifting the Advisory

1. Data evaluated by water quality team
2. California Division of Drinking Water and U.S. EPA concur with direction
3. City leaders and the community are informed of findings and recommendations
4. Drinking water advisory lifted via formal notification

# Maximum Contaminant Level (MCL)

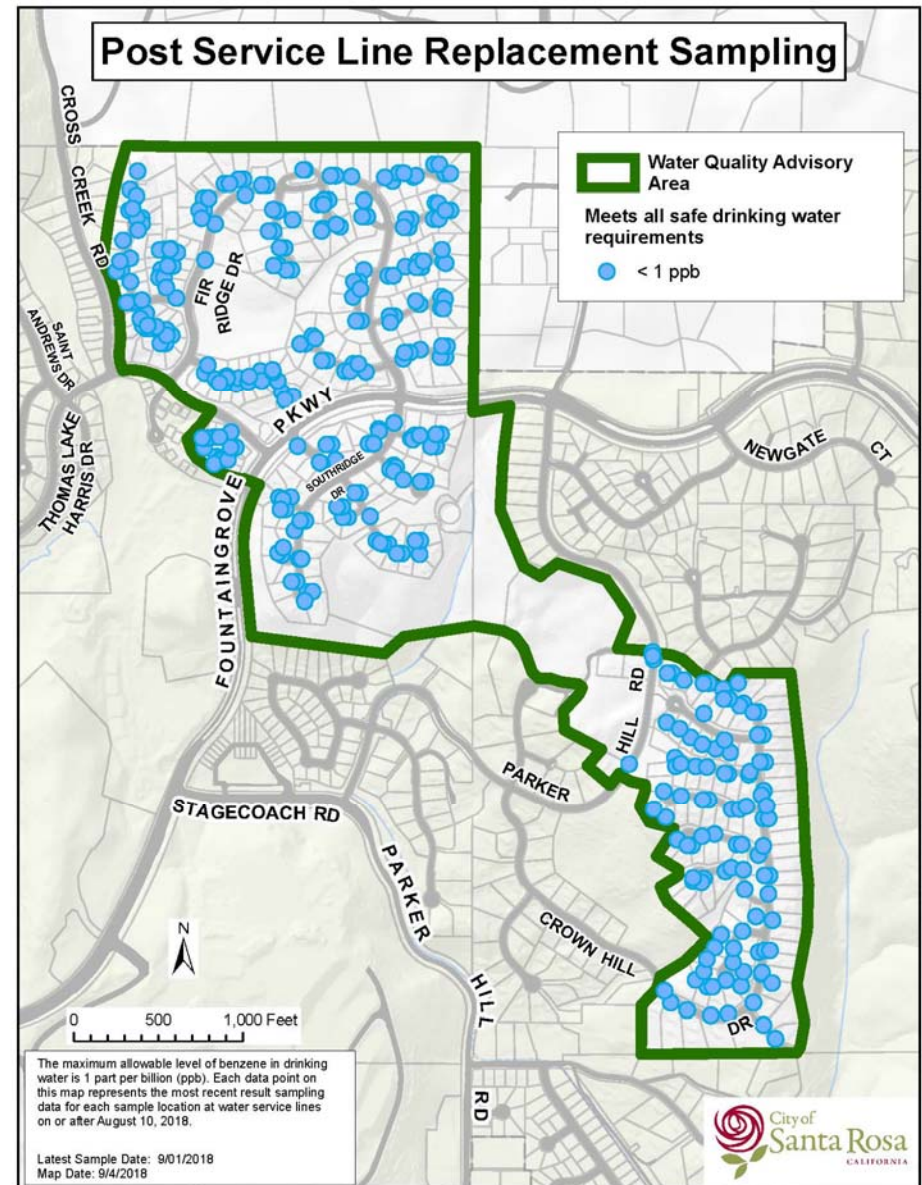
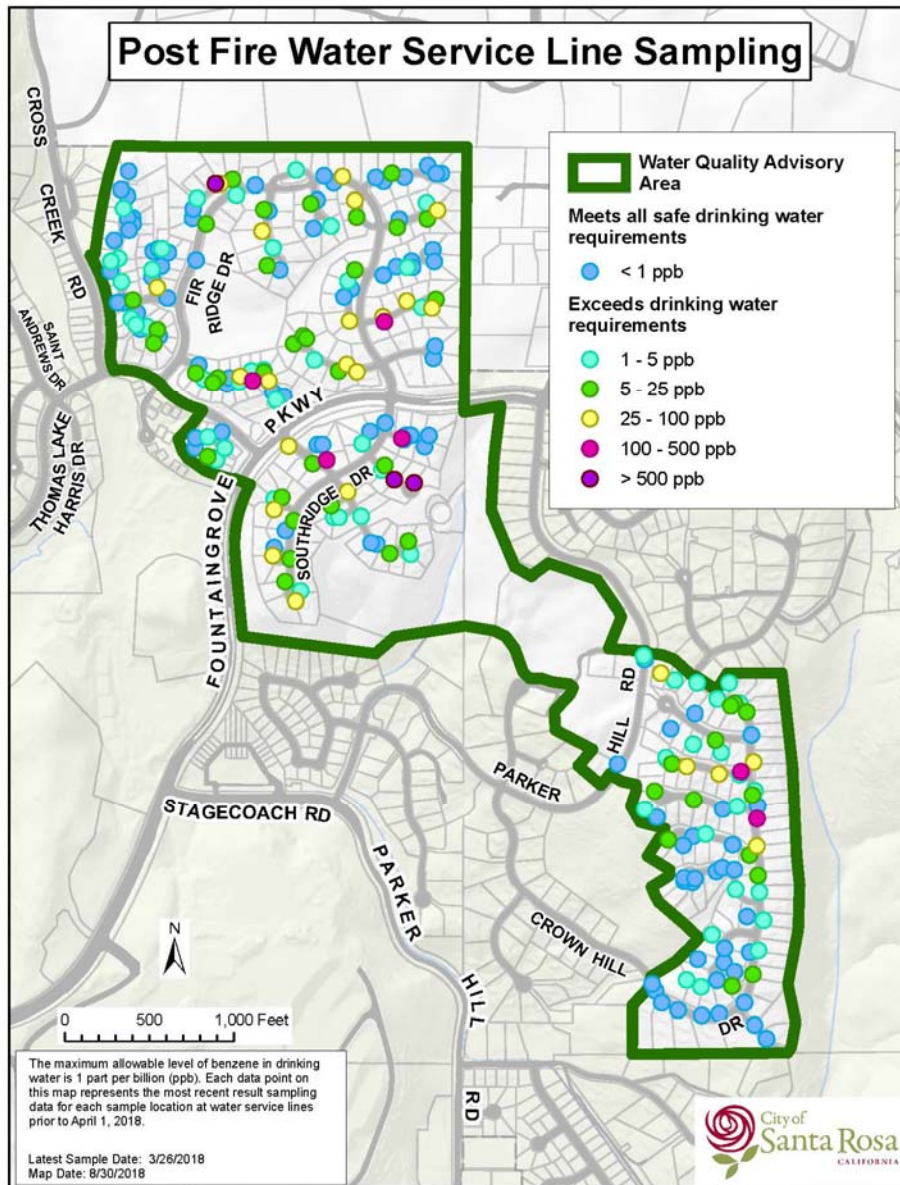


# Data indicates we are well below both US and CA Regulatory Limits

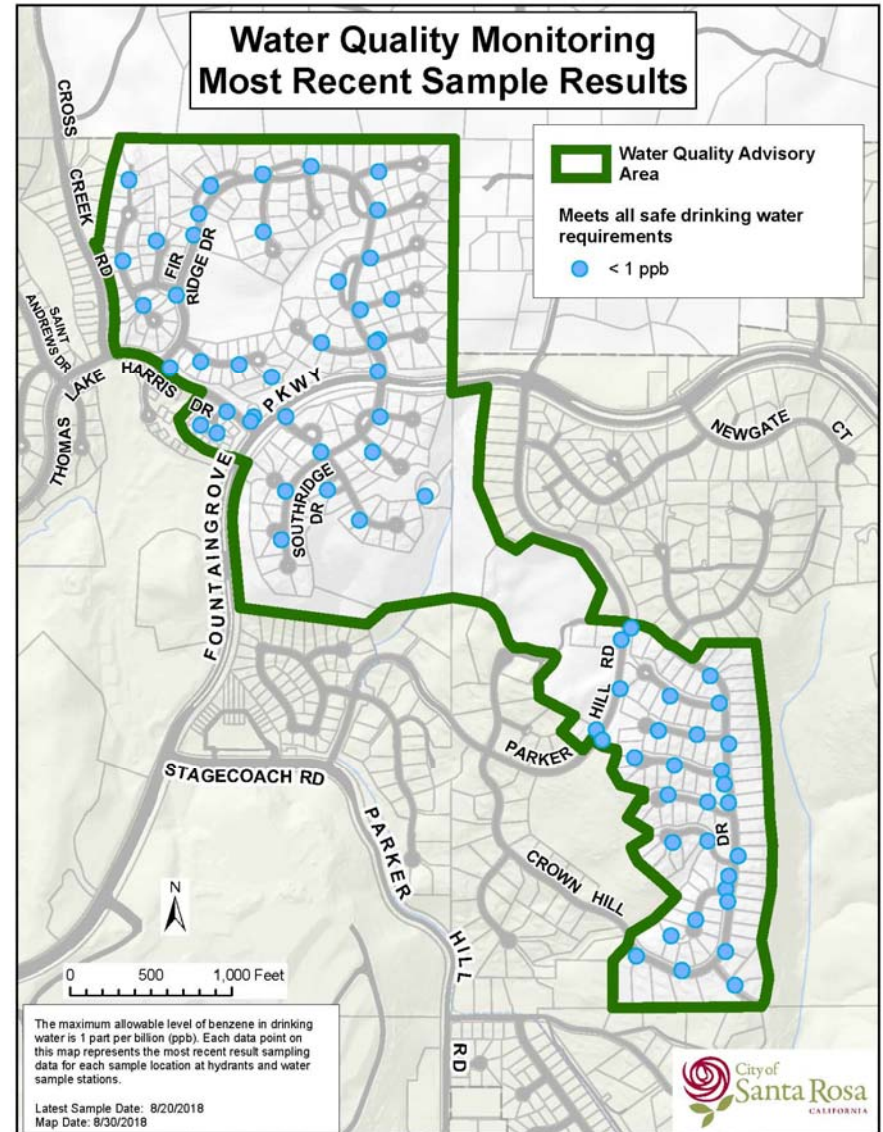
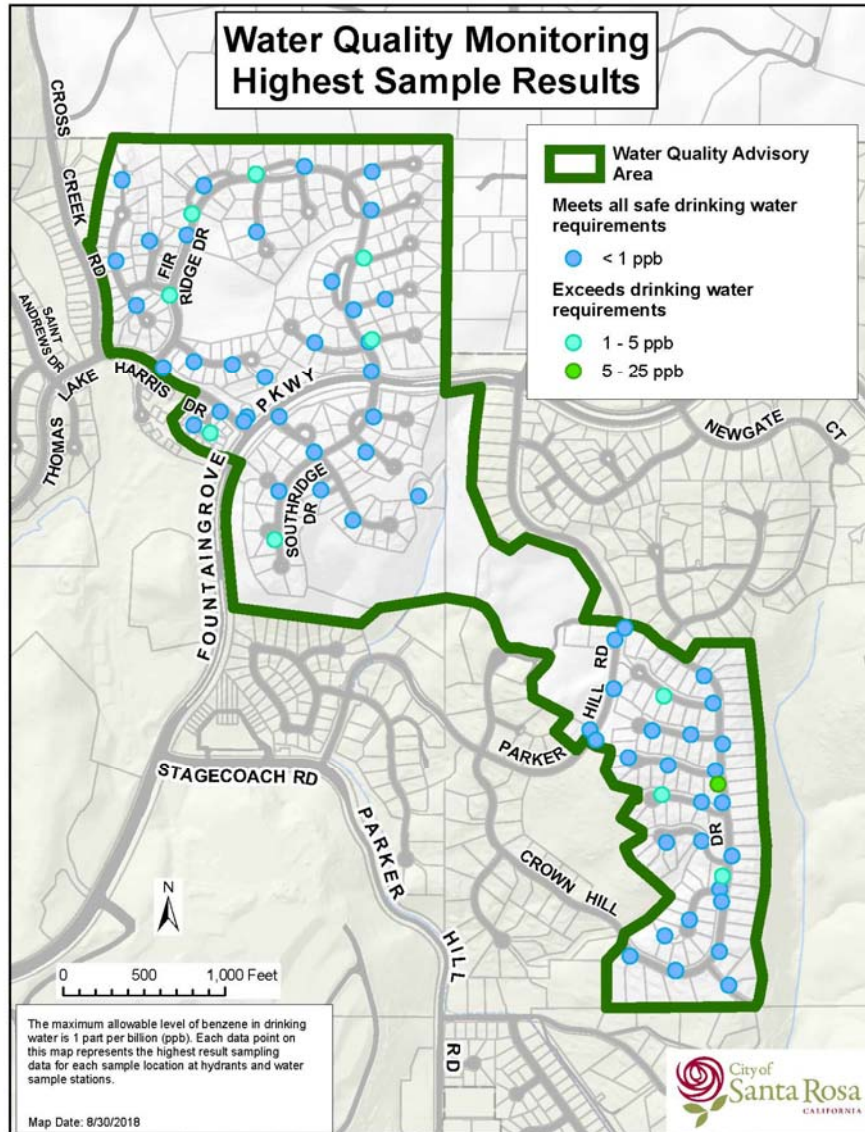


## Prior to Service Line Replacement

## After Service Line Replacement



# Water Quality Monitoring



# Water Quality Monitoring

- Sampling 65 hydrants in the advisory area on a weekly basis since June – all meet regulatory limits
- 51 hydrants show no detectable amounts of benzene
- 11 hydrants have shown infrequent, minimal amounts below 0.5 ppb
- 3 hydrants have shown minimal amounts at or just below 0.5 ppb

# Plan Provided to CA Division of Drinking Water (DDW) to Demonstrate Compliance

- Data shows water quality is well below state and federal regulatory limits
- Targeted replacement to remove contamination
- Sample all service lines post replacement
- 10% re-sampling of all service lines
- Weekly sampling of 65 hydrants for 4 weeks
- Lifting of Advisory on track for Fall 2018

# Flushing, Testing, and Monitoring Plan After the Advisory is Lifted

- Flushing, testing, and monitoring will continue and include:
  - Bi-weekly sampling for two months following lifting of advisory
  - Monthly sampling months 3 through six
  - Quarterly sampling months six through twelve
  - Quarterly sampling from advisory area on-going
- Activities and results will be reported to DDW and shared with the community



# Next Steps

- Coordination with DDW to lift Advisory will continue
- Ongoing communication with affected parties
- Continuing monitoring and evaluation on routine basis
- Results continue to meet water quality regulations, lift advisory by start of October

# Stay Informed

- Latest update August 27, 2018
- [srcity.org/WQAdvisory](http://srcity.org/WQAdvisory)
  - Monitoring Info
  - Updates
- [Sonomacountyrecovers.org](http://Sonomacountyrecovers.org)



## Post-fire Water Quality Investigation Updates

Santa Rosa Water is working determinedly to verify the cause and repair our community's water infrastructure that was damaged as result of the October Wildfires.

### Latest E-news Updates:

- [April 30, 2018](#) - Reconnecting to Water Service in Fountaingrove Water Quality Advisory Area
- [March 23, 2018](#) - Investigation Results and Special Meeting
- [February 23, 2018](#) - Post-fire Water Quality Investigation

### Joint BPU and City Council Meeting Video:

- [March 27, 2018](#)

## Fountaingrove Drinking Water Advisory

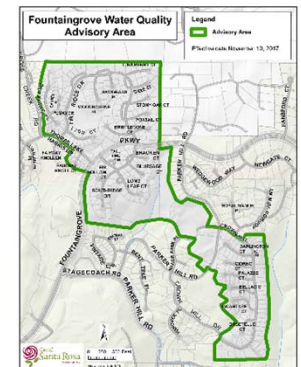
On November 10, 2017, Santa Rosa Water issued a [drinking water advisory](#) for 13 homes in the Fountaingrove area. This advisory went into effect after elevated levels of benzene were detected in the drinking water system. The advisory will remain in place until further notice.

### Residents in the advisory area are advised to:

- Do not consume tap water (this includes drinking, cooking, and brushing teeth)
- Do not allow pets to consume tap water
- Limit use of hot water
- Limit shower time (use lukewarm water and ventilate area)
- Use a dishwasher to wash dishes and use air dry setting Wash clothing in cold water
- Do not take baths
- Do not use hot tubs or swimming pools

[FAQs Fountaingrove water quality advisory](#)

[Click to enlarge](#)



# Questions?



OUR FUTURE IN EVERY DRÖP