



# LOS ALAMOS TRUNK SEWER REPLACEMENT PROJECT MITIGATED NEGATIVE DECLARATION

BPU Meeting  
August 2, 2018

Andrew Wilt, Associate Civil Engineer  
Transportation and Public Works  
Justin Witt, Brelje & Race

# TODAY'S PRESENTATION

- Project Background
  - Alignment
- CEQA
- Recommendation

# BACKGROUND

## 2014 Sanitary Sewer System Master Plan

- Identified approximately 3 miles of Los Alamos Trunk Sewer for near term replacement
  - Nearly 60-year age
  - Deteriorated condition
  - Marginal level of service under high flow conditions

# BACKGROUND

Trunk replacement to be split into 4 segments

- budget constraints
- Construct one while designing the next

Segment 1 is currently proposed

- Approximately 5,500 LF from Streamside Drive to Elaine Drive

Segments 2 through 4 constructed in the future

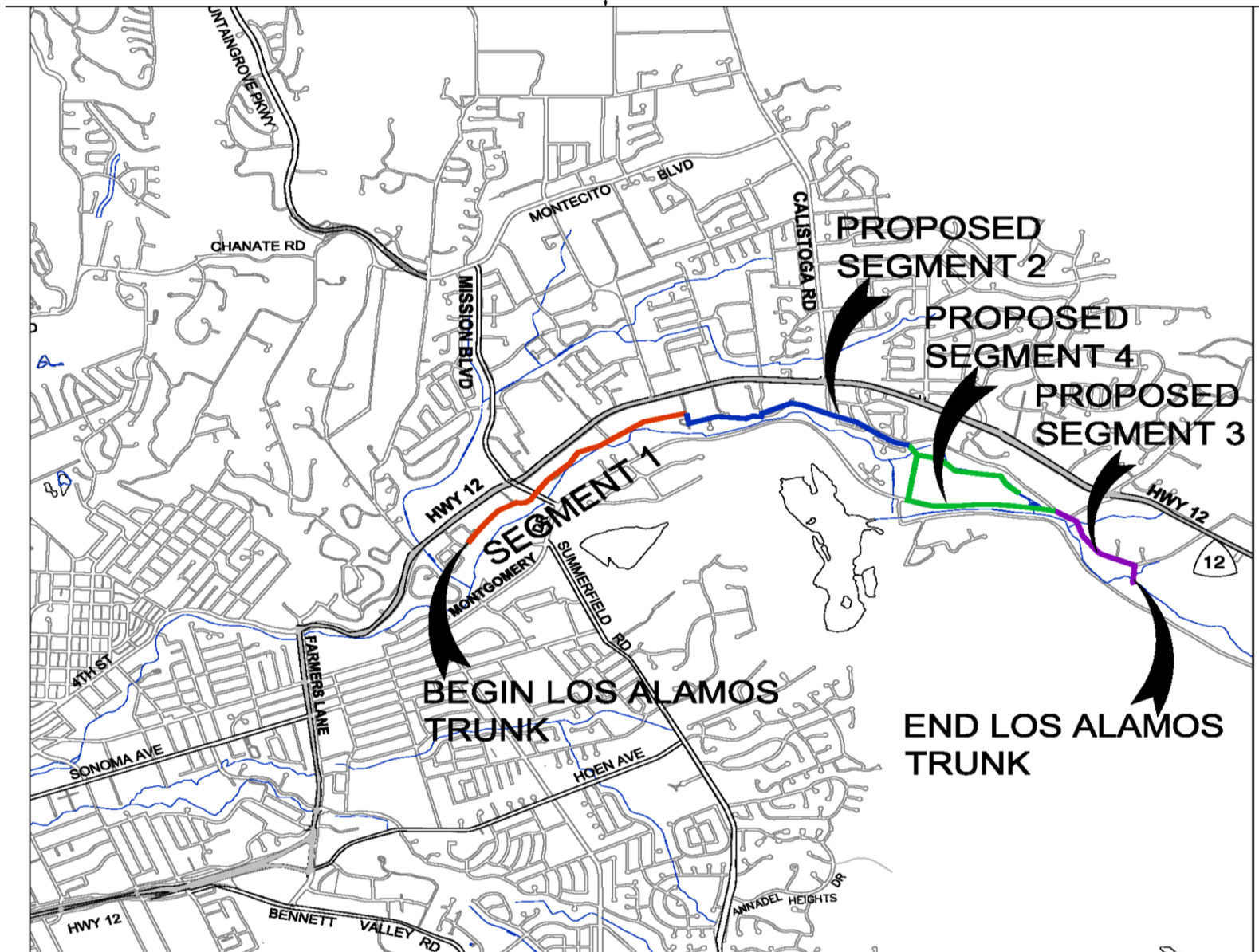
# BACKGROUND

- New alignment – adjacent to existing trunk
  - Must connect to existing 24” pipe at downstream end (Streamside Drive)
  - Must connect to existing pipe at upstream end
    - Overall project near Channel Drive (existing 18”)
    - Segment 1 in Elaine Drive

# BACKGROUND

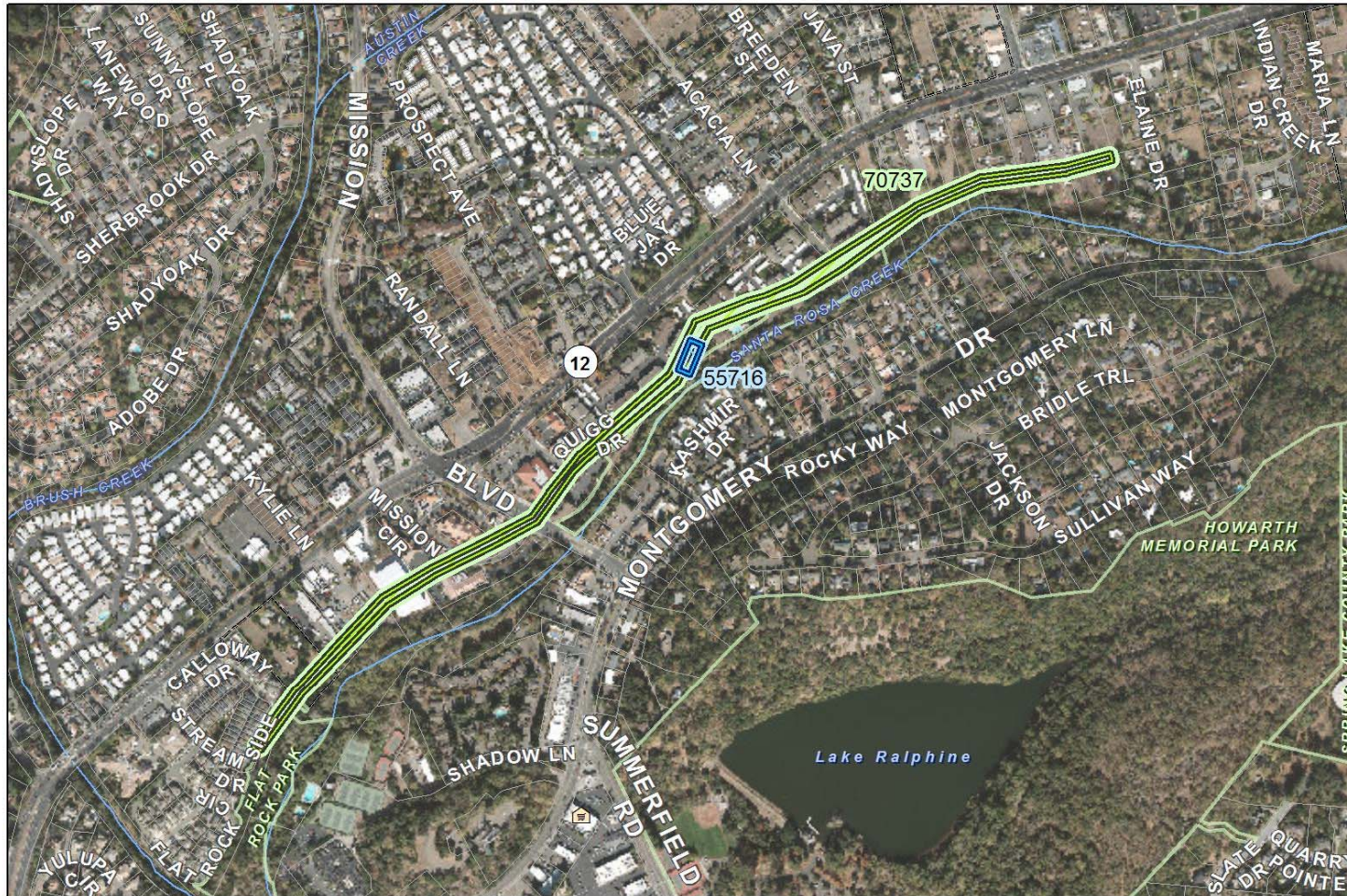
- Modifications needed to existing easements
  - Some portions trunk will be relocated to street
    - easier maintenance
    - less impact to private property
  - Commercial & residential properties impacted
  - Generally, development potential will not be reduced by modifications.

# BACKGROUND - Alignment



# BACKGROUND

## Segment 1



**Project Number:** 1903

Los Alamos Trunk Replacement: Streamside Dr to Elaine Dr

Project Status: Design

Project Areas (IFAS Charge #'s Labeled)

 Water  Sewer

0 100 200 400 600 800 1,000 1,200 1,400 Feet City (Nov. 2015) & County (2013) Aerials shown  
Map Date: 5/2/2018

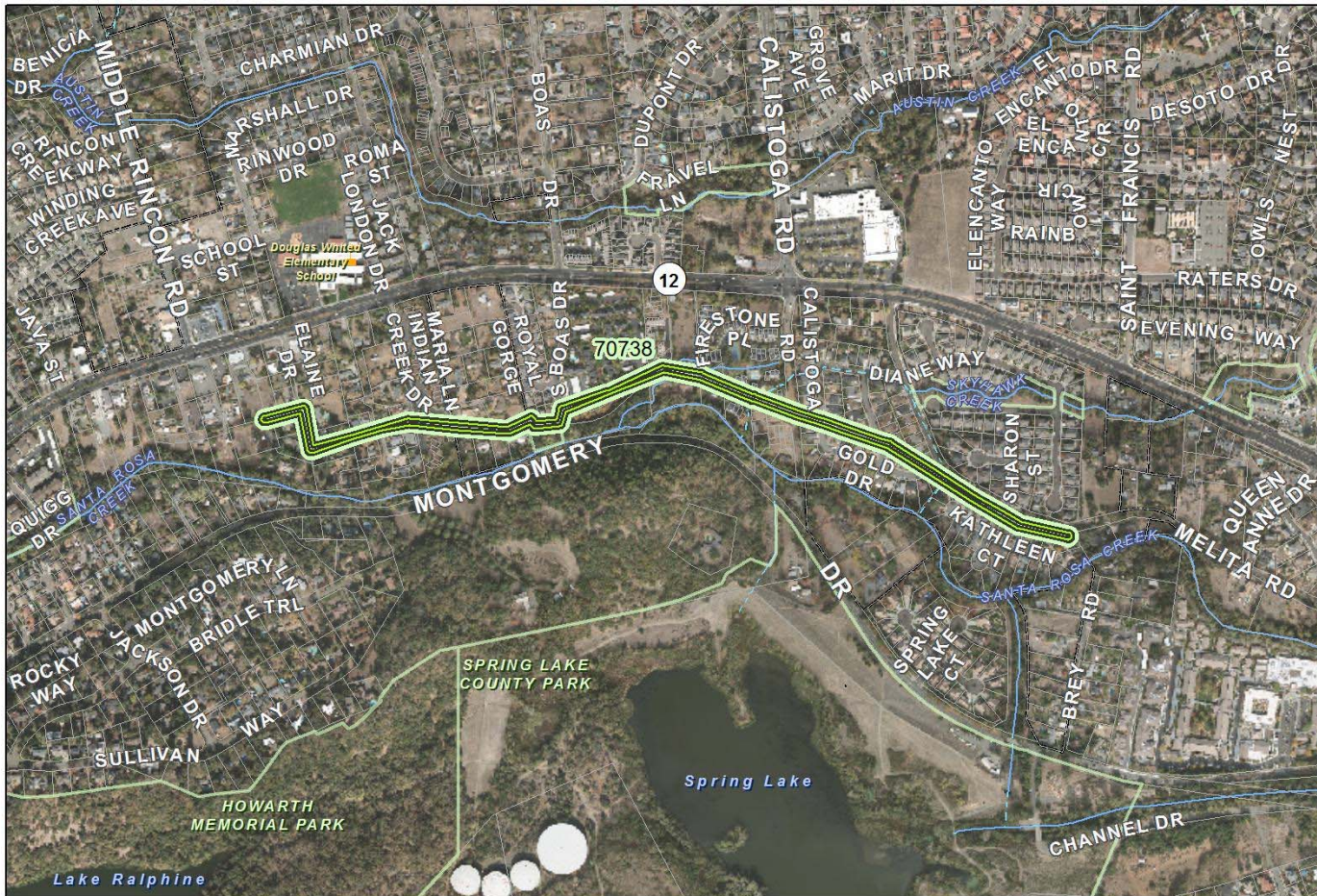


- Information and features shown on this map are intended for general location use only and may contain errors. Map produced by City of Santa Rosa, Asset Management Division. -



# BACKGROUND

## Segment 2



**Project Number:** 1904

**Project Areas (IFAS Charge #'s Labeled)**

 Sewer

Los Alamos Trunk Replacement: Elaine Dr to Melita Rd at Santa Rosa Creek

Project Status: Planning

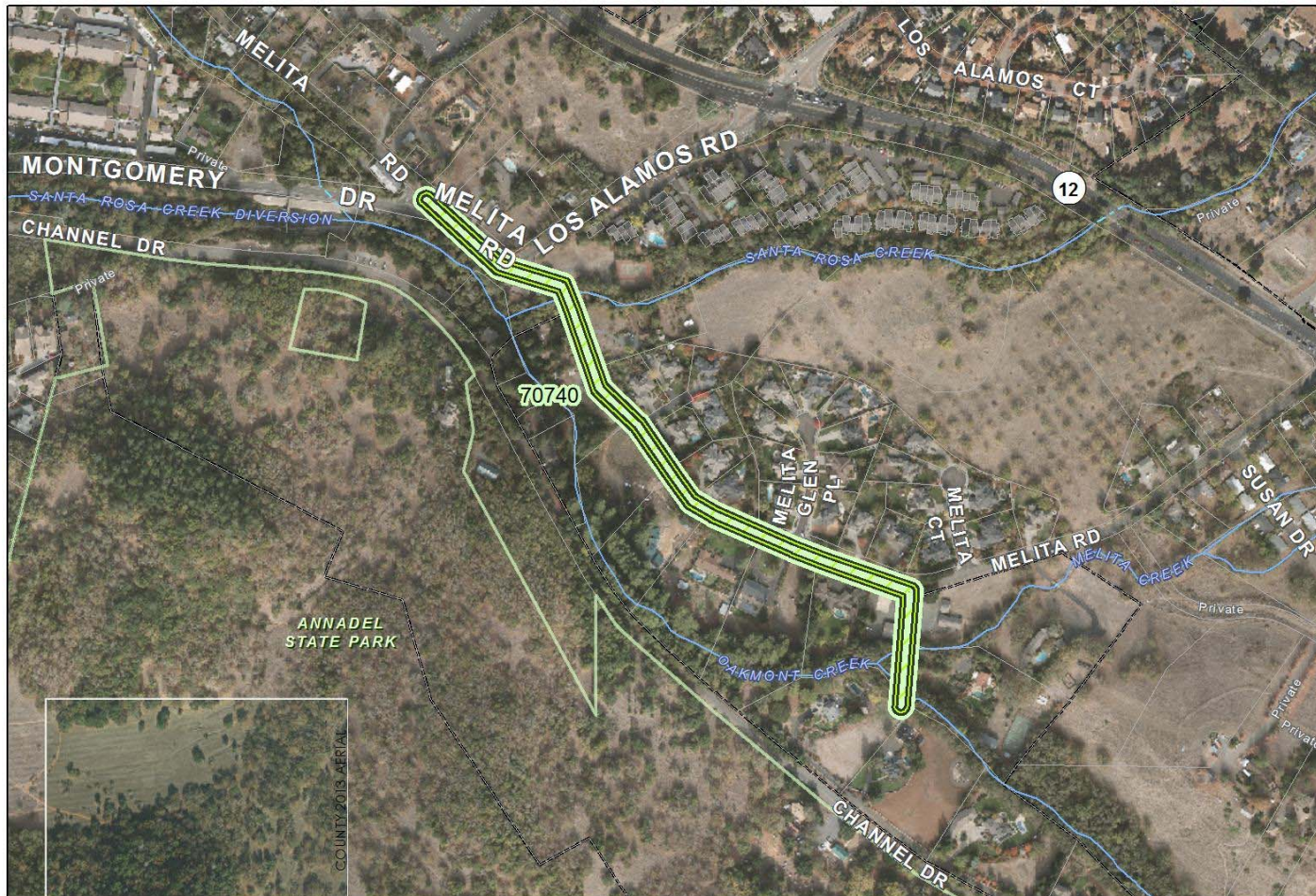
0 100 200 400 600 800 1,000 1,200 1,400 Feet City (Nov. 2015) & County (2013) Aerials shown. Map Date: 5/2/2016

-Information and features shown on this map are intended for general location use only and may contain errors. Map produced by City of Santa Rosa, Asset Management Division. -



# BACKGROUND

## Segment 3



**Project Number:** 1906

**Project Areas (IFAS Charge #'s Labeled)**

 Sewer

Los Alamos Trunk Replacement: Los Alamos and Melita Roads to Oakmont and Melita Creeks

**Project Status:** Planning

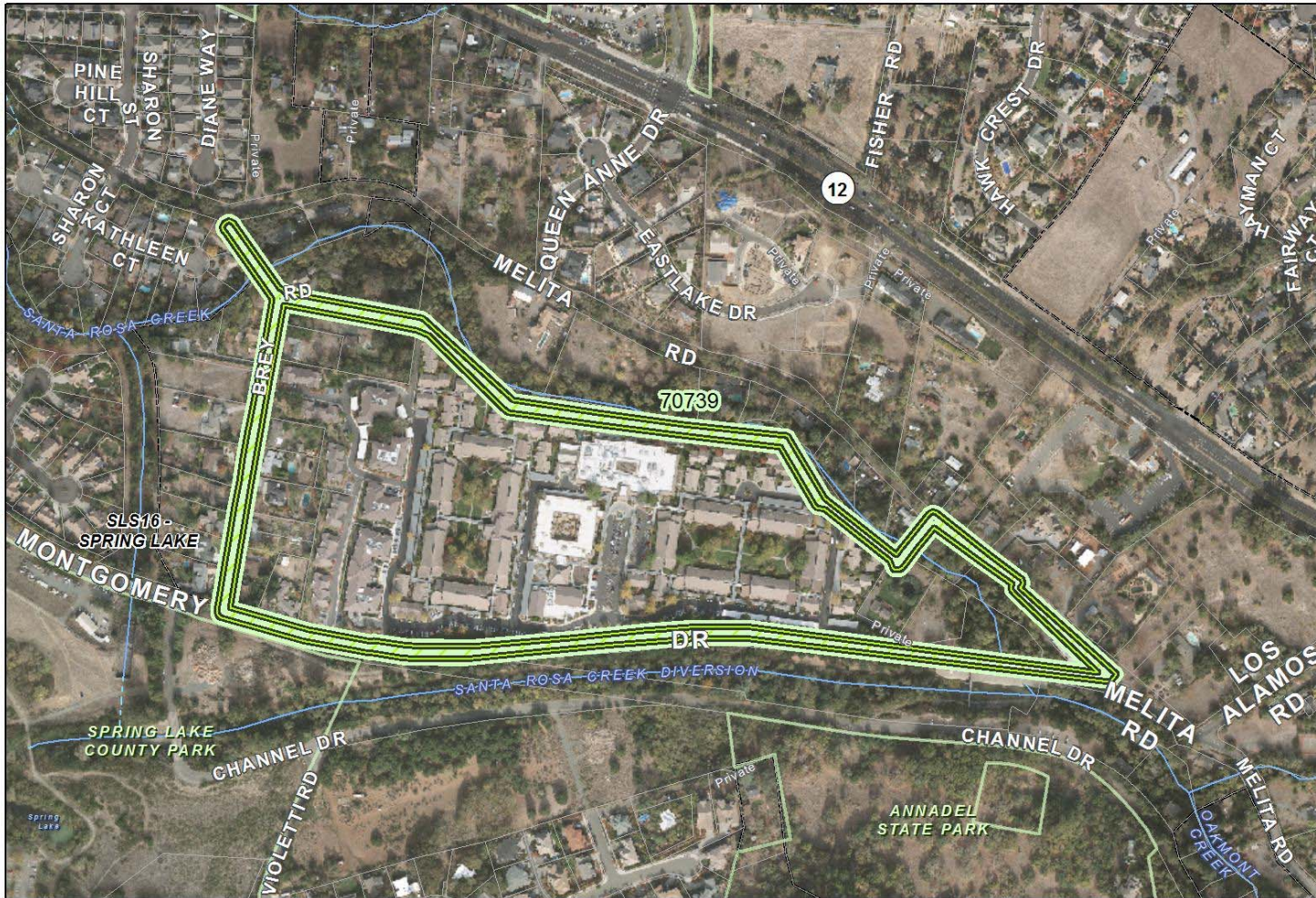
0 100 200 400 600 800 1,000 Feet City (Nov. 2015) & County (2013) Aerials shown. Map Date: 5/2/2018

-Information and features shown on this map are intended for general location use only and may contain errors. Map produced by City of Santa Rosa, Asset Management Division. -



# BACKGROUND

## Segment 4



**Project Number:** 1905

**Project Areas (IFAS Charge #'s Labeled)**

 Sewer

**Los Alamos Trunk Replacement: Melita Rd at Santa Rosa Creek to Los Alamos and Melita**

**Project Status:** Planning

0 100 200 400 600 800 1,000 Feet City (Nov. 2015) & County (2013) Aerials shown  
Map Date: 5/2/2018

- Information and features shown on this map are intended for general location use only and may contain errors. Map produced by City of Santa Rosa, Asset Management Division. -

# CALIFORNIA ENVIRONMENTAL QUALITY ACT (CEQA)

- Public Disclosure of project and potential impacts
- Mitigation

# CEQA PROCESS

- Preparation of Initial Study/Mitigated Negative Declaration (MND)
- 30-day public review period February 28 to March 30, 2018
- Response to Comments
- Adoption of MND
- File Notice of Determination

# INITIAL STUDY / MND

- All potentially significant impacts are construction-related and can be mitigated
  - Construction-related dust, erosion control
  - Accidental discovery of archaeological resources
  - Construction-related spills, contaminated groundwater
  - Construction-related noise

# INITIAL STUDY / MND

- Project-specific impacts
  - Nesting birds, roosting bats, western pond turtle, tree impacts
  - Mission Blvd/Mission Circle
    - Traffic control
    - Nighttime work
  - Temporary bike route bypass

# PUBLIC REVIEW & NOTICING

- Public Comment Period - 30 days
- Noticing in Press Democrat and at County Clerk
- Distribution to State Clearinghouse and Agencies
- Notice mailed to adjacent property owners
- Public review copies (online, at City TPW)



# TRIBAL CONSULTATION

- AB52 requires Tribal Consultation
- Consultation requests mailed to:
  - Federated Indians of Graton Rancheria
  - Lytton Band of Pomo Indians
  - Kashia Ban of Pomo Indians of Stewarts Point
  - Mishewal-Wappo Tribe of Alexander Valley
  - Middletown Rancheria of Pomo Indians

# COMMENTS & FINDINGS

- Federated Indians of Graton Rancheria
  - Would issue comments within 10 days
  - No further comments received
- Comment letters from 1 agency
- Response to Comments and Final MND
- With incorporation of recommended mitigation measures, the project would not cause significant environmental effects.

# RECOMMENDATION

- It is recommended by the Departments of Water and Transportation and Public Works that the Board, by resolution
  1. Adopt the MND for the Los Alamos Trunk Sewer Replacement Project
  2. Approve the Project alignment and Segment 1
  3. Adopt the MMRP for the Project
  4. Direct staff to file Notice of Determination (NOD)
- Questions?