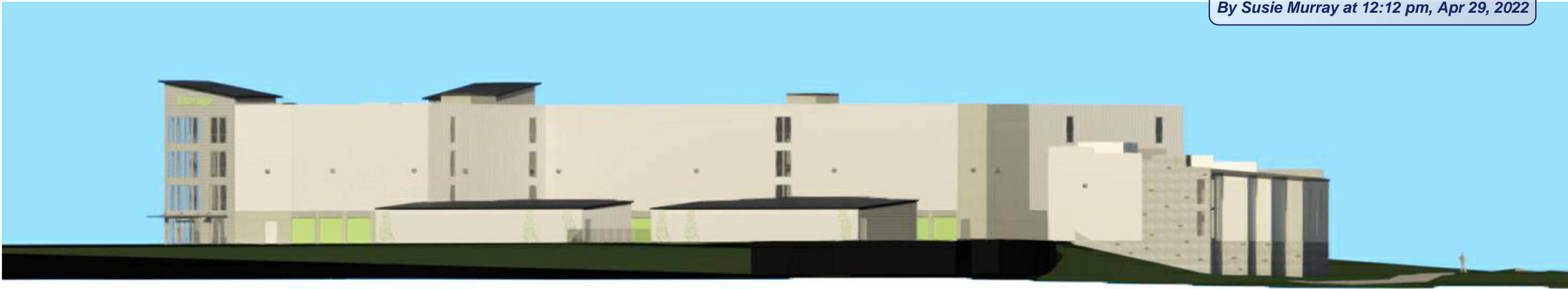


RECEIVED
By Susie Murray at 12:12 pm, Apr 29, 2022



3D VIEWS FROM STREAMSIDE DRIVE



ISSUED FOR:	Feb. 2022	DESIGN REVIEW	 85 Keystone Avenue, Suite E Reno, Nevada 89503 Tel (775) 813-6887	<p align="center">SELF STORAGE</p> 4465 & 4480 Streamside Dr Santa Rosa, CA 95409 Sonoma County APN 032-010-005	DWG # <p align="center">DR 3.3</p>
	DATE	DESCRIPTION			



3D VIEWS FROM STREAMSIDE DRIVE



ISSUED FOR:	Feb. 2022	DESIGN REVIEW
	DATE	DESCRIPTION



 85 Keystone Avenue, Suite E
 Reno, Nevada 89503
 Tel (775) 813-6887

SELF STORAGE
 4465 & 4480 Streamside Dr
 Santa Rosa, CA 95409
 Sonoma County APN 032-010-005

DWG #
DR 3.4



3D VIEWS FROM EXISTING TRAIL

ISSUED FOR:	Feb. 2022	DESIGN REVIEW	 85 Keystone Avenue, Suite E Reno, Nevada 89503 Tel (775) 813-6887	SELF STORAGE 4465 & 4480 Streamside Dr Santa Rosa, CA 95409 Sonoma County APN 032-010-005	DWG # DR 3.5
	DATE	DESCRIPTION			



3D VIEWS FROM EXISTING TRAIL

ISSUED FOR:	Feb. 2022	DESIGN REVIEW	 85 Keystone Avenue, Suite E Reno, Nevada 89503 Tel (775) 813-6887	SELF STORAGE 4465 & 4480 Streamside Dr Santa Rosa, CA 95409 Sonoma County APN 032-010-005	DWG # DR 3.6
	DATE	DESCRIPTION			



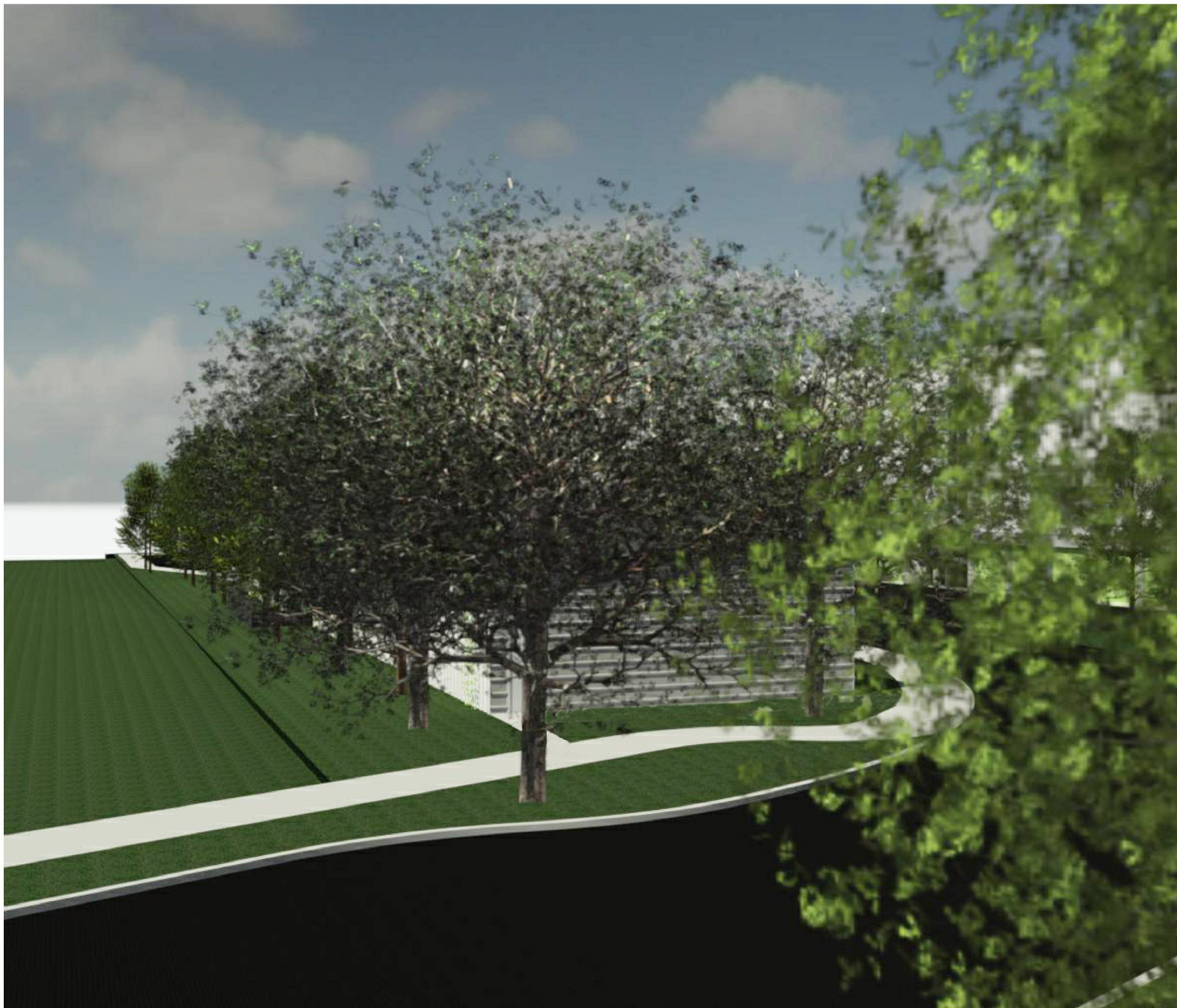
3D VIEWS FROM STREAMSIDE DRIVE

ISSUED FOR:	Feb. 2022	DESIGN REVIEW
	DATE	DESCRIPTION



ARECESS
 85 Keystone Avenue, Suite E
 Reno, Nevada 89503
 Tel (775) 813-6887

SELF STORAGE
 4465 & 4480 Streamside Dr
 Santa Rosa, CA 95409
 Sonoma County APN 032-010-005

DWG #
DR 3.7



3D VIEWS FROM STREAMSIDE DRIVE

ISSUED FOR:	Feb. 2022	DESIGN REVIEW	 85 Keystone Avenue, Suite E Reno, Nevada 89503 Tel (775) 813-6887	SELF STORAGE 4465 & 4480 Streamside Dr Santa Rosa, CA 95409 Sonoma County APN 032-010-005	DWG # DR 3.8
	DATE	DESCRIPTION			