

Project :

COMMERCIAL RENOVATION
INTERIOR TENANT IMPROVEMENT
3515 INDUSTRIAL AVE

Title:
**PROPOSED 1st
FLOOR PLAN**

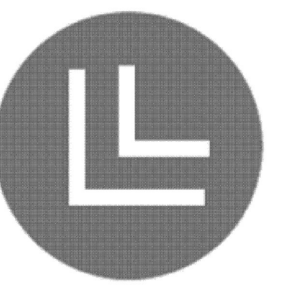
Revision

Sheet :
A-2

PROPOSED 1ST FLOOR
SCALE: 1/8" = 1'-0"

1

WALL ASSEMBLY LEGEND	FLOOR PLAN NOTES	KEYNOTES CONTINUED	KEYNOTES
<p>1-HOUR RATED WALL ASSEMBLY, TABLE 721.1(2), ITEM 13-1.1, UL DESIGN U419. ONE HOUR RATED PARTITION (NON-BEARING) METAL STUDS-INTERIOR PARTITION WITH GYPSUM WALLBOARD EACH SIDE. PROVIDE 4-1/8" THICK WALL FACE-TO-FACE (MINIMUM) WITH 3 1/2" STUDS 24" ON CENTER WITH 5/8" TYPE X GYPSUM WALLBOARD APPLIED VERTICALLY OR HORIZONTALLY WITH WALLBOARD SCREWS AT 7" ON CENTER WITH END JOINTS ON WALLING MEMBERS. STAGGER JOINTS EACH SIDE. REFERENCE DETAIL 9/A9.31.</p>	<p>A GENERAL CONTRACTOR TO PROVIDE ALL NEW WALL BLOCKING AND BACKING (WHERE REQUIRED). VERIFY LOCATION WITH TENANT.</p> <p>B FIELD VERIFY ALL DIMENSIONS PRIOR TO ANY CONSTRUCTION.</p> <p>C REFERENCE SCHEDULE SHEETS FOR EXISTING AND NEW FINISH TYPES.</p> <p>D USE MOISTURE RESISTANT GYP. BOARD AT ALL CERAMIC TILE LOCATIONS.</p> <p>E SEE SHEET A7.22 FOR ACCESSIBLE RESTROOM DETAILS.</p> <p>F EXIT DOORS TO BE OPERABLE FROM INSIDE WITHOUT A KEY OR SPECIAL KNOWLEDGE OR EFFORT - PROVIDE READILY VISIBLE SIGN ADJACENT TO DOORWAY STATING, "THIS DOOR TO REMAIN UNLOCKED WHEN THIS SPACE IS OCCUPIED."</p> <p>G REFERENCE A7.22 FOR RESTROOM FIXTURE MOUNTING HEIGHTS.</p>	<p>18 MULTI TIER RACK.</p> <p>WALL LEGEND</p> <p>EXISTING WALL. MODIFY AS NEEDED FOR REMODEL - PATCH, PREP, AND PAINT FINISHES TO MATCH ADJACENT.</p> <p>NON-BEARING INTERIOR WALL. NONCOMBUSTIBLE STUDS-INTERIOR PARTITION. PROVIDE MIN 6" 6005162-339 (MIN. 20 GAUGE) CHANNEL SHAPED STUDS MAX 24" C.C. WITH METAL 150U50-54 STUD BRIDGING 5'-0" MAX SPAN. CONNECT BRIDGING WITH 1-1/2" x 1-1/2" x 1-1/2" x 5-1/2" LONG CLIP ANGLES. CONNECT BRIDGING CHANNEL TO CLIP ANGLES AND CLIP ANGLES TO STUDS WITH MIN. 2-#10 SELF-DRILLING SCREWS. PROVIDE 6" x 20 GA x 3" LEG W/1" GAP TOP TRACK FASTEN WITH MIN. (1) #9 SMS @ 24" O.C. MAX SPAN. PROVIDE 600T125-33 BOTTOM TRACK. FASTEN WITH 0.300" DIA x 3" SHOT PINS AT 24" O.C.</p> <p>INTERIOR MCP WALL. INSTALL PER MANUFACTURER'S INSTRUCTIONS.</p>	<p>1 EXISTING MAIN BUILDING ENTRANCE & EMPLOYEE ACCESS POINT. ALL SOLID CORE EXTERIOR DOORS SHALL BE EQUIPPED WITH 180 DEGREE VIEWING DEVICE TO SCREEN PERSONS BEFORE ALLOWING ENTRY. REFERENCE DOOR SCHEDULE.</p> <p>2 INTERIOR DOOR - REFERENCE DOOR SCHEDULE.</p> <p>3 EXISTING EXTERIOR WALL - TO REMAIN.</p> <p>4 EMERGENCY EYEWASH STATION</p> <p>5 COUNTERTOP AND CABINETRY WITH SINK. PROVIDE SINK 24" OFF WALL TO CENTERLINE OF SINK. MINIMUM RIM OR COUNTER SURFACE NOT TO EXCEED 34" A.F.F. AND PARALLEL APPROACH OF 48" X36" CLEAR OK IF RANGE OR STOVE TOP ARE NOT PROVIDED. UPPER CABINETRY SHOWN DASHED WHERE OCCURS. PROVIDED BY TENANT.</p> <p>6 WATER HEATER - REFERENCE PLUMBING PLANS.</p> <p>7 ACCESSIBLE BUILDING ENTRANCE SIGNAGE - REFERENCE DETAIL 8/A9.11.</p> <p>8 INTERIOR WALL.</p> <p>9 WALL INFILL.</p> <p>10 NEW STEEL ROLL-UP DOOR - REFERENCE DOOR SCHEDULE.</p> <p>11 EXISTING STRUCTURAL COLUMN - TO REMAIN.</p> <p>12 HI-LO DRAINING FOUNTAIN</p> <p>13 GROW AREA TABLES.</p> <p>14 MOP SINK - REFERENCE PLUMBING PLANS.</p> <p>15 EMPLOYEE LOCKERS.</p> <p>16 GROW AREA.</p> <p>17 3 TIER RACK.</p>
FIRE-RATED WALL CATEGORIES	NOTES		
<p>FIRE BARRIERS: REFERENCE CBC SECTION 706. A FIRE-RESISTANCE-RATED WALL HAVING PROTECTED OPENINGS, WHICH RESTRICTS THE SPREAD OF FIRE AND EXTENDS CONTINUOUSLY FROM THE FOUNDATION TO OR THROUGH THE ROOF, WITH SUFFICIENT STRUCTURAL STABILITY UNDER FIRE CONDITIONS TO ALLOW COLLAPSE OF CONSTRUCTION ON EITHER SIDE WITHOUT COLLAPSE OF THE WALL.</p> <p>FIRE BARRIERS: REFERENCE CBC SECTION 707. A FIRE-RESISTANCE-RATED WALL ASSEMBLY OF MATERIALS DESIGNED TO RESTRICT THE SPREAD OF FIRE IN WHICH CONTINUITY IS MAINTAINED.</p> <p>FIRE PARTITIONS: REFERENCE CBC SECTION 708. A VERTICAL ASSEMBLY OF MATERIALS DESIGNED TO RESTRICT THE SPREAD OF FIRE IN WHICH OPENINGS ARE PROTECTED.</p>	<p>EXTERIOR UTILITY DOOR SHALL BE LABEL "FIRE CONTROL ROOM" WITH A MINIMUM 3-INCH LETTERS CONTRASTING IN COLOR TO THE BACKGROUND.</p> <p>PERMANENTLY POSTED NO STORAGE SIGNS OF DURABLE MATERIAL. EMERGENCY LIGHTING AS WELL AS SWITCH LIGHTING, AND FIRE ALARM CONTROL PANEL OR REMOTE ANNUNCIATOR WITH SILENCE AND RESET CAPABILITY SHALL BE LOCATED IN THE FIRE CONTROL ROOM.</p> <p>THE MAXIMUM TRAVEL DISTANCE TO THE FIRE EXTINGUISHER SHALL NOT EXCEED 75-FEET. THE MINIMUM RATING CLASSIFICATION FOR THE FIRE EXTINGUISHER SHALL NOT BE LESS THAN A 2A-10BC. CFC 906.</p> <p>LOCKERS SHALL BE FURNISHED AND INSTALLED BY CONTRACTOR.</p>		
SYMBOL LEGEND			
<p>ROOM TAG</p> <p>DOOR TAG</p> <p>EXISTING DOOR TAG</p>			



Joyful Design & Management Group

Tel: 1-415-320-9788
Joyfuldesign5437@gmail.com

Project :

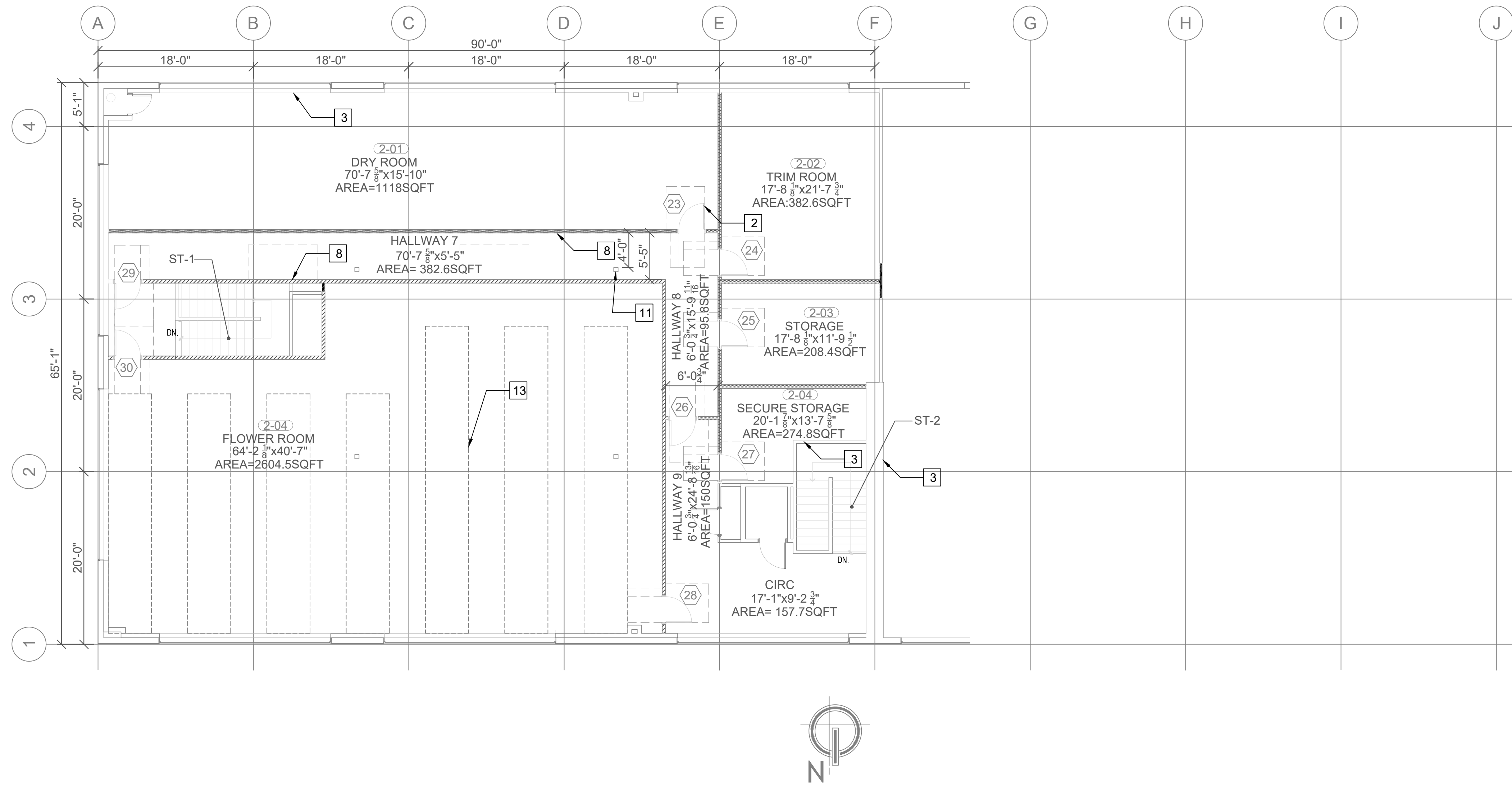
COMMERCIAL RENOVATION
INTERIOR TENANT IMPROVEMENT
3515 INDUSTRIAL AVE

Title:
**PROPOSED 2nd FLOOR
FLOOR PLAN**

Revision

Sheet :

A-2.1



PROPOSED 2nd FLOOR
SCALE: 1/8" = 1'-0"

1

WALL ASSEMBLY LEGEND	FLOOR PLAN NOTES	KEYNOTES CONTINUED	KEYNOTES
<p>1-HOUR RATED WALL ASSEMBLY, TABLE 721.1(2), ITEM 13-1.1, UL DESIGN U419. ONE HOUR RATED PARTITION (NON-BEARING) METAL STUDS-INTERIOR PARTITION WITH GYPSUM WALLBOARD EACH SIDE. PROVIDE 4"X8" THICK WALL FACE-TO-FACE (MINIMUM) WITH 3 1/2" STUDS 24" ON CENTER WITH 5/8" TYPE X GYPSUM WALLBOARD APPLIED VERTICALLY OR HORIZONTALLY WITH WALLBOARD SCREWS AT 7" ON CENTER WITH END JOINTS ON WALLING MEMBERS. STAGGER JOINTS EACH SIDE. REFERENCE DETAIL 9/A9.31.</p>	<p>A GENERAL CONTRACTOR TO PROVIDE ALL NEW WALL BLOCKING AND BACKING (WHERE REQUIRED). VERIFY LOCATION WITH TENANT.</p> <p>B FIELD VERIFY ALL DIMENSIONS PRIOR TO ANY CONSTRUCTION.</p> <p>C REFERENCE SCHEDULE SHEETS FOR EXISTING AND NEW FINISH TYPES.</p> <p>D USE MOISTURE RESISTANT GYP. BOARD AT ALL CERAMIC TILE LOCATIONS.</p> <p>E SEE SHEET A7.22 FOR ACCESSIBLE RESTROOM DETAILS.</p> <p>F EXIT DOORS TO BE OPERABLE FROM INSIDE WITHOUT A KEY OR SPECIAL KNOWLEDGE OR EFFORT - PROVIDE READILY VISIBLE SIGN ADJACENT TO DOORWAY STATING, "THIS DOOR TO REMAIN UNLOCKED WHEN THIS SPACE IS OCCUPIED."</p> <p>G REFERENCE A7.22 FOR RESTROOM FIXTURE MOUNTING HEIGHTS.</p>	<p>18 MULTI TIER RACK.</p>	<p>1 EXISTING MAIN BUILDING ENTRANCE & EMPLOYEE ACCESS POINT. ALL SOLID CORE EXTERIOR DOORS SHALL BE EQUIPPED WITH 180 DEGREE VIEWING DEVICE TO SCREEN PERSONS BEFORE ALLOWING ENTRY. REFERENCE DOOR SCHEDULE.</p> <p>2 INTERIOR DOOR - REFERENCE DOOR SCHEDULE.</p> <p>3 EXISTING EXTERIOR WALL - TO REMAIN.</p> <p>4 EMERGENCY EYEWASH STATION</p> <p>5 COUNTERTOP AND CABINETRY WITH SINK. PROVIDE SINK 24" OFF WALL TO CENTERLINE OF SINK. MINIMUM RIM OR COUNTER SURFACE NOT TO EXCEED 34" A.F.F. AND PARALLEL APPROACH OF 48"X36" CLEAR OK IF RANGE OR STOVE TOP ARE NOT PROVIDED. UPPER CABINETRY SHOWN DASHED WHERE OCCURS - PROVIDED BY TENANT.</p> <p>6 WATER HEATER - REFERENCE PLUMBING PLANS.</p> <p>7 ACCESSIBLE BUILDING ENTRANCE SIGNAGE - REFERENCE DETAIL 8/A9.11.</p> <p>8 INTERIOR WALL.</p> <p>9 WALL INFILL.</p> <p>10 NEW STEEL ROLL-UP DOOR - REFERENCE DOOR SCHEDULE.</p> <p>11 EXISTING STRUCTURAL COLUMN - TO REMAIN.</p> <p>12 HI-LO DRAINING FOUNTAIN</p> <p>13 GROW AREA TABLES.</p> <p>14 MOP SINK - REFERENCE PLUMBING PLANS.</p> <p>15 EMPLOYEE LOCKERS.</p> <p>16 GROW AREA.</p> <p>17 3 TIER RACK.</p>
FIRE-RATED WALL CATEGORIES	NOTES	WALL LEGEND	
<p>FIRE WALLS: REFERENCE CBC SECTION 706. FIRE RESISTANCE-RATED WALL HAVING PROTECTED OPENINGS, WHICH RESTRICTS THE SPREAD OF FIRE AND EXTENDS CONTINUOUSLY FROM THE FOUNDATION TO OR THROUGH THE ROOF, WITH SUFFICIENT STRUCTURAL STABILITY UNDER FIRE CONDITIONS TO ALLOW COLLAPSE OF CONSTRUCTION ON EITHER SIDE WITHOUT COLLAPSE OF THE WALL.</p> <p>FIRE BARRIERS: REFERENCE CBC SECTION 707. A FIRE-RESISTANCE-RATED WALL ASSEMBLY OF MATERIALS DESIGNED TO RESTRICT THE SPREAD OF FIRE IN WHICH CONTINUITY IS MAINTAINED.</p> <p>FIRE PARTITIONS: REFERENCE CBC SECTION 708. A VERTICAL ASSEMBLY OF MATERIALS DESIGNED TO RESTRICT THE SPREAD OF FIRE IN WHICH OPENINGS ARE PROTECTED.</p>	<p>EXTERIOR UTILITY DOOR SHALL BE LABEL "FIRE CONTROL ROOM" WITH A MINIMUM 3-INCH LETTERS CONTRASTING IN COLOR TO THE BACKGROUND.</p> <p>PERMANENTLY POSTED NO STORAGE SIGNS OF DURABLE MATERIAL. EMERGENCY LIGHTING AS WELL AS SWITCH LIGHTING, AND FIRE ALARM CONTROL PANEL OR REMOTE ANNUNCIATOR WITH SILENCE AND RESET CAPABILITY SHALL BE LOCATED IN THE FIRE CONTROL ROOM</p> <p>THE MAXIMUM TRAVEL DISTANCE TO THE FIRE EXTINGUISHER SHALL NOT EXCEED 75-FEET. THE MINIMUM RATING CLASSIFICATION FOR THE FIRE EXTINGUISHER SHALL NOT BE LESS THAN A 2A-10BC. CFC 906.</p> <p>LOCKERS SHALL BE FURNISHED AND INSTALLED BY CONTRACTOR.</p>	<p>EXISTING WALL. MODIFY AS NEEDED FOR REMODEL - PATCH, PREP, AND PAINT FINISHES TO MATCH ADJACENT.</p> <p>NON-BEARING INTERIOR WALL. NONCOMBUSTIBLE STUDS-INTERIOR PARTITION. PROVIDE MIN 6" 4006162-33P (MIN. 20 GAUGE) CHANNEL SHAPED STUDS MAX 24" C.C. WITH METAL 150J50-54 STUD BRIDGING 5'-0" MAX SPAN. CONNECT BRIDGING WITH 1-1/2" x 1-1/2" x 0.0566" x 5-1/2" LONG CLIP ANGLES. CONNECT BRIDGING CHANNEL TO CLIP ANGLES AND CLIP ANGLES TO STUDS WITH MIN. 2-#10 SELF-DRILLING SCREWS. PROVIDE 6" x 20 GA x 3" LEG W/1" GAP TOP TRACK FASTEN WITH MIN. (1) #9 SMS @ 24" O.C. MAX SPAN. PROVIDE 600T125-33 BOTTOM TRACK. FASTEN WITH 0.300" DIA x 3" SHOT PINS AT 24" O.C.</p> <p>INTERIOR MCP WALL. INSTALL PER MANUFACTURER'S INSTRUCTIONS.</p>	
SYMBOL LEGEND			
<p>ROOM TAG</p> <p>DOOR TAG</p> <p>EXISTING DOOR TAG</p>			