

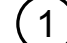
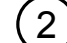
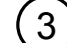


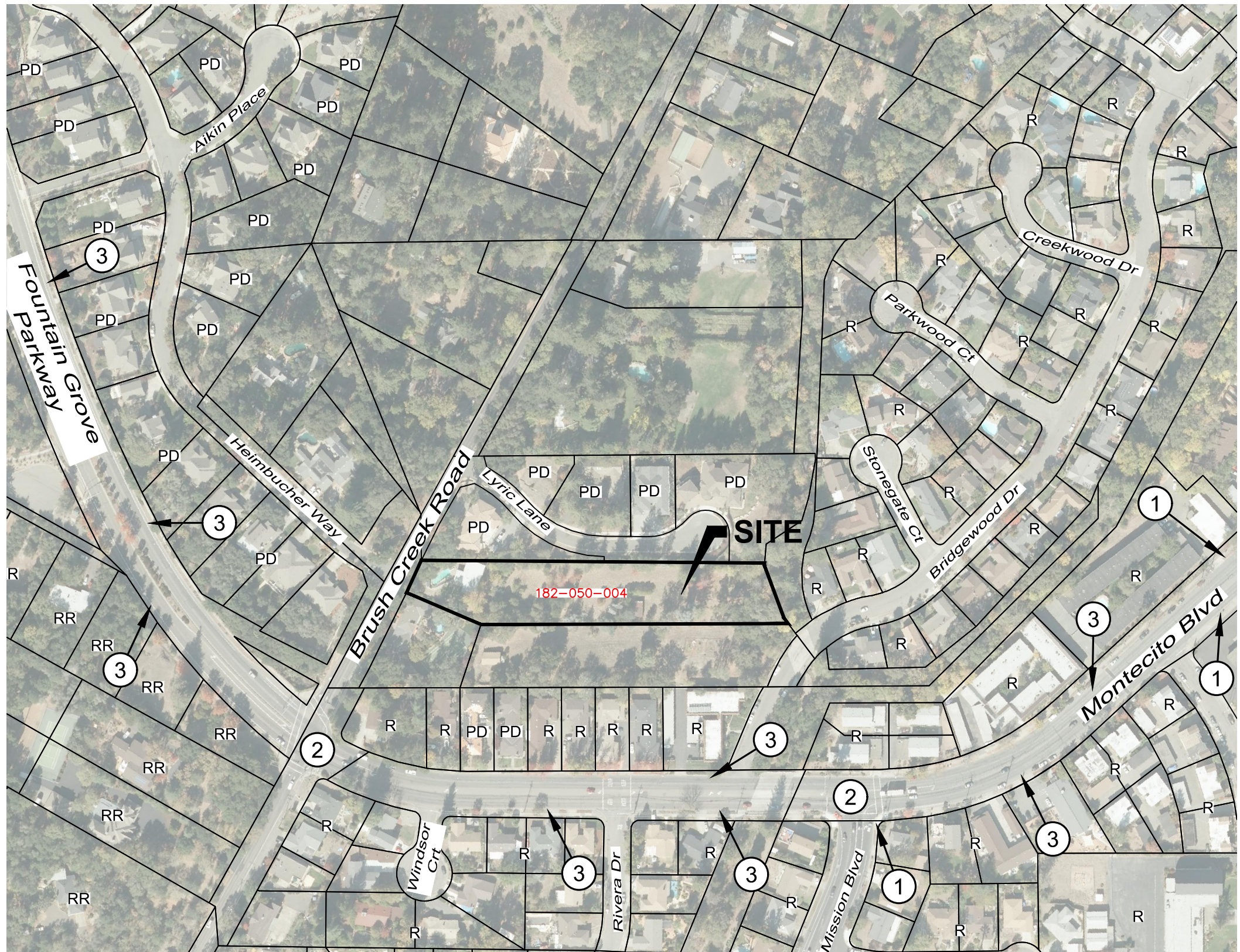
LEGEND & ABBREVIATIONS:

-  SUBJECT PARCEL
-  PARCEL LINES

- CSC COMMUNITY SHOPPING CENTER
- PD PLANNED DEVELOPMENT
- R LOW-HIGH DENSITY RESIDENTIAL
- RR RURAL RESIDENTIAL

KEY NOTES:

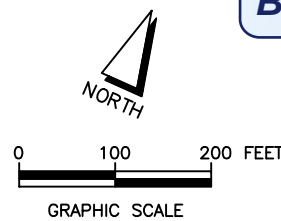
-  BUS STOP
-  SIGNALIZATION
-  BICYCLE LANE



RECEIVED
By jg16 at 2:26 pm, Jun 01, 2020

City of Santa Rosa
Planning & Economic
Development Department

RECEIVED



May 27, 2020

**SITE ANALYSIS & NEIGHBORHOOD
CONTEXT MAP**

Nils Welin & Klas Berghede
2210 Brush Creek Road, Santa Rosa, CA

adobe associates, inc.
civil engineering | land surveying | wastewater

1220 N. Dutton Ave., Santa Rosa, CA 95401
P. (707) 541-2300 F. (707) 541-2301
Website: www.adobeinc.com

"A Service You Can Count On!"