

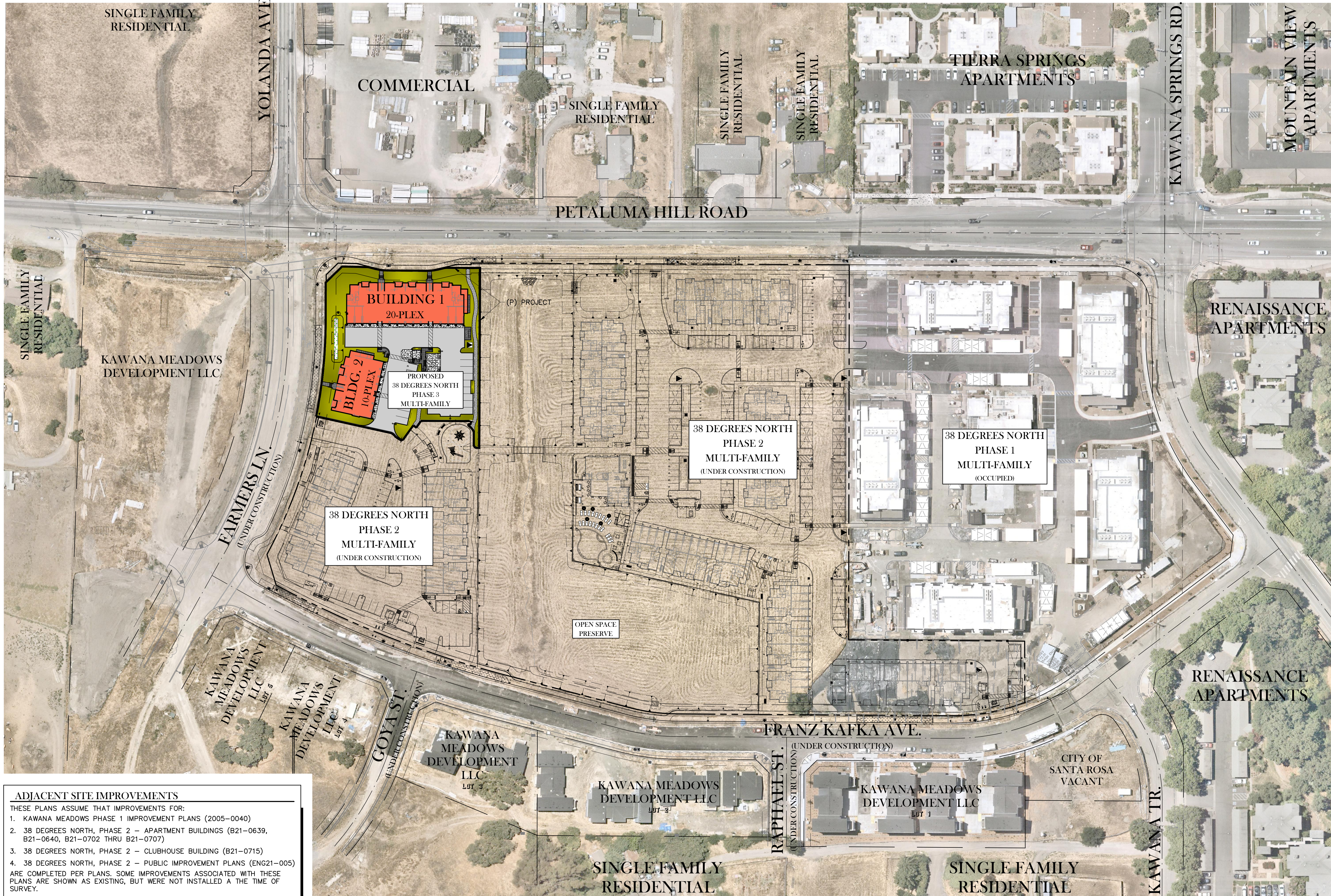
NEIGHBORHOOD CONTEXT MAP

38 DEGREES NORTH - PHASE 3

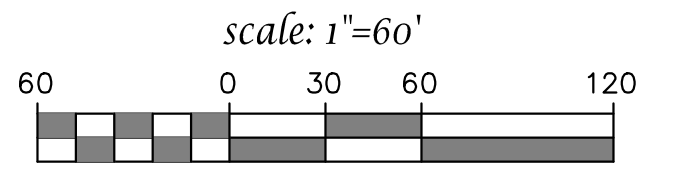
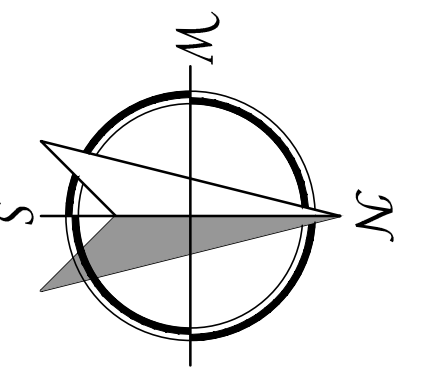
CONCEPTUAL DESIGN REVIEW

CITY OF SANTA ROSA, CA

RECEIVED
By E07081 at 11:47 am, May 13, 2021



LEGEND	
	AC PAVEMENT
	CONCRETE PAVEMENT
	CONCRETE SIDEWALK
	SITE LANDSCAPING



NEIGHBORHOOD CONTEXT MAP
MAY 12, 2021

TSD ENGINEERING, INC.
expect more.
31 Natoma Street, Suite #160
Folsom, CA 95630
Phone: (916) 608-0707
Fax: (916) 608-0701

ADJACENT SITE IMPROVEMENTS
THESE PLANS ASSUME THAT IMPROVEMENTS FOR:
1. KAWANA MEADOWS PHASE 1 IMPROVEMENT PLANS (2005-0040)
2. 38 DEGREES NORTH, PHASE 2 - APARTMENT BUILDINGS (B21-0639, B21-0640, B21-0702 THRU B21-0707)
3. 38 DEGREES NORTH, PHASE 2 - CLUBHOUSE BUILDING (B21-0715)
4. 38 DEGREES NORTH, PHASE 2 - PUBLIC IMPROVEMENT PLANS (ENG21-005)
ARE COMPLETED PER PLANS. SOME IMPROVEMENTS ASSOCIATED WITH THESE PLANS ARE SHOWN AS EXISTING, BUT WERE NOT INSTALLED AT THE TIME OF SURVEY.

P:\Projects\430-004\02_DWG\B- Planning\FIG\38N_PHS-CONTEXT.dwg, Kerry, 08/19/24, 05-12-21