

**PROPOSED TREE PALETTE**

BOTANICAL NAME	COMMON NAME	HEIGHT / SPREAD	SIZE	WATER USE
<b>SPECIMEN TREE</b>				
ACER F. 'A.B.'	AUTUMN BLAZE MAPLE	50'/40"	15 GALLON	MEDIUM
<b>SCREENING TREE</b>				
LAURUS N. 'SARATOGA	SWEET BAY	30'/30"	15 GALLON	LOW
<b>STREET TREES</b>				
PISTACHIA CHINENSIS	CHINESE PISTACHE	30'-60'/30'-60"	15 GALLON	LOW
QUERCUS SUBER	CORK OAK	30'-60'/30'-60"	15 GALLON	LOW
<b>ACCENT TREES</b>				
CERCIS OCCIDENTALIS	WESTERN REDBUD	15'/15'	15 GALLON	LOW
PRUNUS C. 'KRAUTER VESUVIUS'	PURPLE-LEAF PLUM	20'/15'	15 GALLON	LOW



**CONCEPTUAL LANDSCAPE STATEMENT**

REGIONAL AND MICRO-CLIMATE CONDITIONS, SOLAR ORIENTATION AND SOIL CONDITIONS WILL BE TAKEN INTO ACCOUNT WITH REGARDS TO PLANT SELECTION AND PLACEMENT. THE PLANT PALETTE PROVIDES MANY PLANTS WITH VARYING GROWTH HABITS, PREFERENCES AND TOLERANCES, SO SELECTION OF JUST THE RIGHT PLANT SHOULD NOT BE DIFFICULT. A HIGH PERCENTAGE OF PLANTS SELECTED WILL BE DROUGHT TOLERANT AND APPROPRIATE FOR THE CLIMATE. THIS PALETTE, ALONG WITH A DRIP IRRIGATION SYSTEM WILL CONSERVE WATER WITHIN THE PROJECT.

BY SPECIFYING PLANTS WHICH REQUIRE LITTLE TO NO PRUNING, THE GREEN WASTE WILL BE REDUCED. PLANTS SELECTED WILL COMPLEMENT THE ARCHITECTURE AND THE OVERALL VISION OF THE STONEBRIDGE COMMUNITY. THE PLANT PALETTE WAS DERIVED FROM THE RECOMMENDED PLANT LIST ALONG WITH OTHERS THAT FIT THE DESIGN AESTHETIC.

ENTRYWAYS AND PICTURE WINDOWS WILL BE FRAMED BY SPECIMEN SHRUBS AND NODES WILL HAVE ACCENT PLANTINGS. PLANT SPECIES WHICH ENHANCE THE ARCHITECTURAL ELEVATIONS SHALL BE USED. A DIVERSE USE OF PLANT SPECIES WILL DISPLAY VARIOUS TEXTURES, FORMS, FOLIAGE COLOR, AND FLOWERS; WILL CREATE A BEAUTIFUL LANDSCAPE TO CONTRIBUTE AESTHETICALLY TO THE SURROUNDING NEIGHBORHOODS.

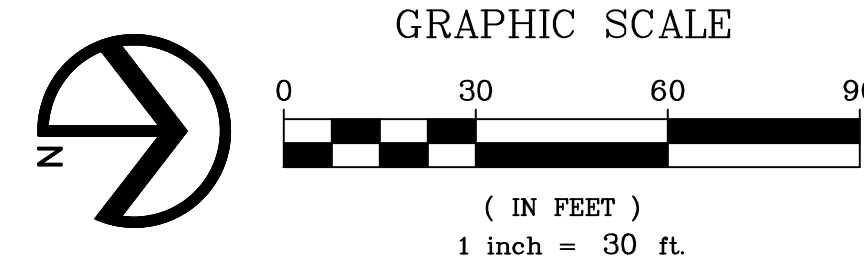
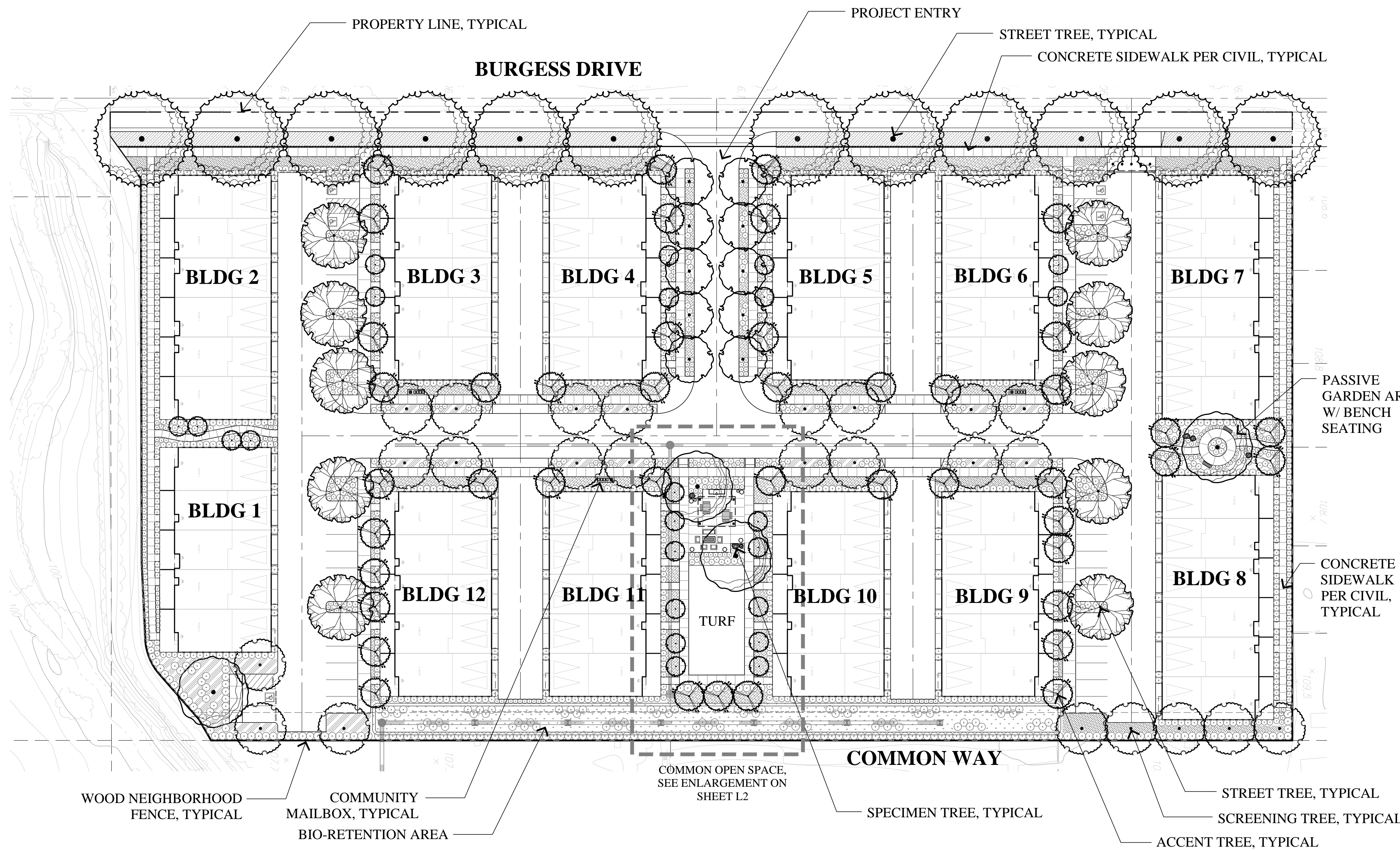
THE TREES HAVE BEEN SELECTED TO HAVE NON-INVASIVE ROOT SYSTEMS, AND PLACED WITH ADEQUATE SETBACKS TO ENSURE NO CONFLICT WITH UTILITIES AND HARDSCAPE, OR CONFLICT WITH ANY SITE LINE DISTANCES. ROOT BARRIERS WILL BE INSTALLED ON ALL TREES NEAR PAVING AND UTILITIES, WHERE FEASIBLE, TREES HAVE BEEN PLACED TO MITIGATE SOLID BUILDING SURFACES AND FENCES. TALLER SHRUBS WILL ALSO BE LOCATED AT SOLID BUILDING SURFACES AND FENCES, WHILE LOWER SHRUBS WILL BE LOCATED WHERE GROUND LEVEL WINDOWS AND ARCHITECTURAL FEATURES OCCUR, AND AT CORNERS TO MAINTAIN SITE LINE DISTANCES.

THE IRRIGATION SYSTEM WILL USE WEATHER-BASED CONTROLLERS TO CONSERVE THE USE OF WATER. SPRAY IRRIGATION WILL ONLY OCCUR AT TURF AREAS, AND SPRAY HEADS WITH LOW PRECIPITATION RATES WILL BE USED TO MINIMIZE RUNOFF, EROSION AND OVERSPRAY. THE BALANCE OF THE PLANTING AREAS WILL BE IRRIGATED USING DRIP IRRIGATION METHODS. THE TREES WILL BE ON SEPARATE VALVES AND WILL BE IRRIGATED WITH BUBBLERS. SHRUBS WILL BE HYDROZONED ACCORDING TO THEIR WATER REQUIREMENTS AND MICROCLIMATES.

IT IS OUR INTENT TO SPECIFY IN THE LANDSCAPE CONSTRUCTION DOCUMENTS THE USE OF RECYCLED MATERIALS SUCH AS RECYCLED WOOD MULCH, INGREDIENTS WITHIN THE CONCRETE, FORMWORK, SITE FURNITURE, ETC. IT IS OUR INTENT TO STOCKPILE THE TOPSOIL FOR RE-USE, UNLESS SOIL TESTS DEEM THE SOIL INADEQUATE AND RECOMMEND IMPORTED SOIL. WE INTEND TO RECYCLE A MINIMUM OF 50% OF THE LANDSCAPE CONSTRUCTION AND GREEN WASTES.

**NOTES:**

1. ALL TREES SHALL BE PLANTED AND STAKED PER CITY STANDARDS.
2. TREES BE PLANTED WITHIN 3' OF HARDSCAPE ELEMENTS, SHALL HAVE A LINEAR ROOT BARRIER INSTALLED ADJACENT TO THE HARDSCAPE ELEMENT AT TIME OF TREE PLANTING.
3. LANDSCAPE AND IRRIGATION SHALL COMPLY WITH CITY'S CURRENT WATER-EFFICIENT LANDSCAPE ORDINANCE.
4. ALL PLANTING AREAS SHALL BE AUTOMATICALLY IRRIGATED PER CITY STANDARDS. USING LOW-FLOW SPRAY, BUBBLERS OR DRIP METHODS.
5. ALL PLANTING AREAS SHALL BE MULCHED TO A MINIMUM DEPTH OF 3".



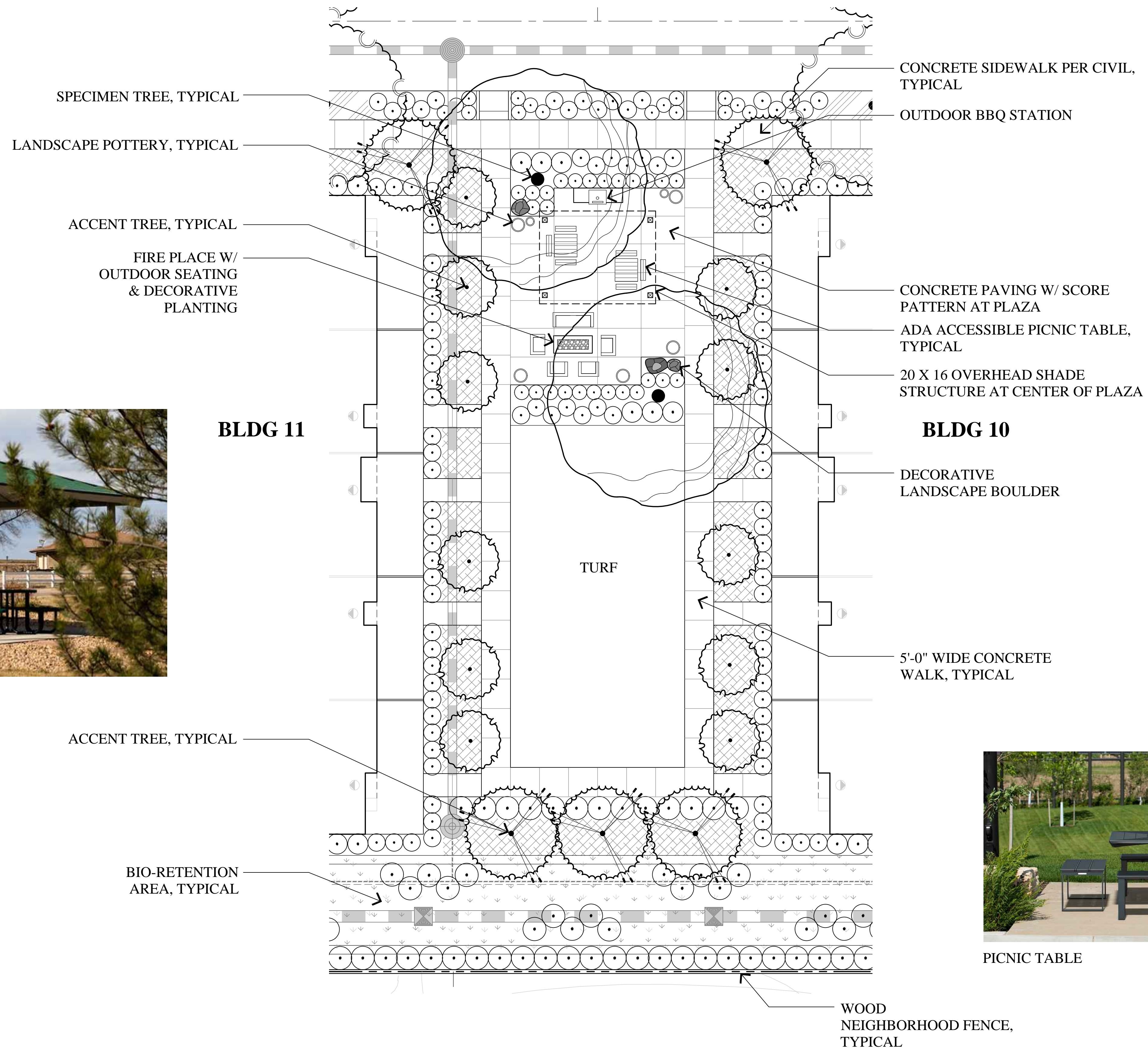
**RIPLEY DESIGN GROUP**  
 LANDSCAPE ARCHITECTURE  
 LAND PLANNING  
 1615 BONANZA STREET  
 SUITE 314  
 WALNUT CREEK, CA 94596  
 TEL: 925.938.7377  
 FAX: 925.938.7436

RYDER HOMES

**Conceptual Landscape Plan**

**Meadow Creek  
 Townhomes**  
 Santa Rosa, California

MAY 31, 2022



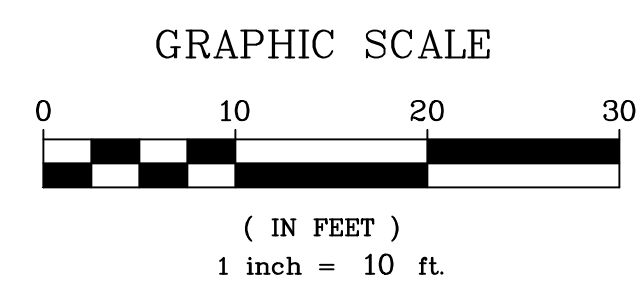
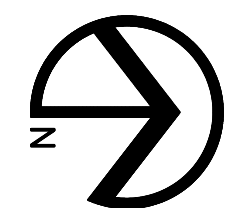
OVERHEAD SHADE STRUCTURE



FIRE PLACE WITH OUTDOOR SEATING



PICNIC TABLE



RYDER HOMES



# Conceptual Landscape Enlargement Common Open Space

Meadow Creek  
Townhomes  
Santa Rosa, California

May 31, 2022

L2