

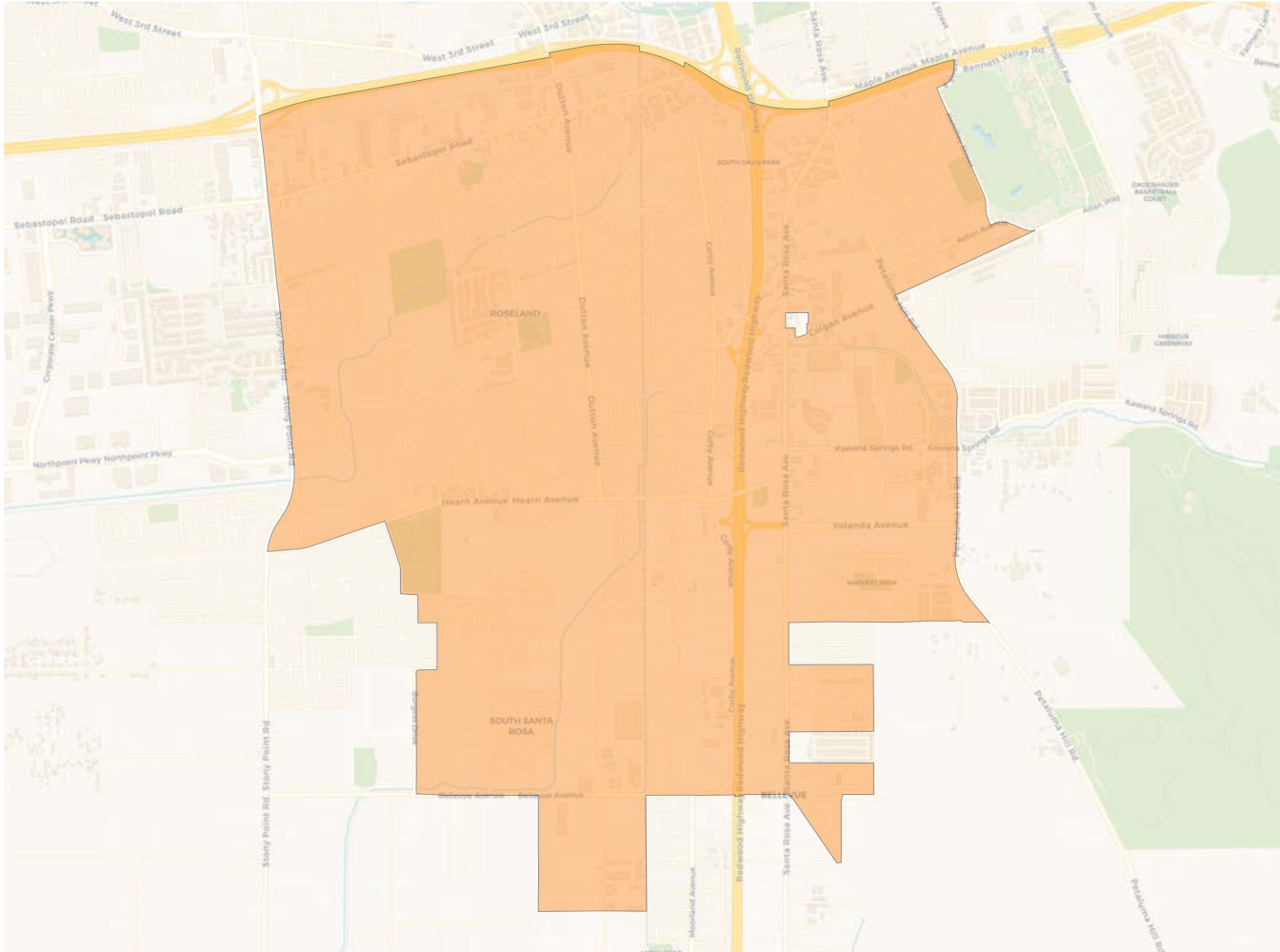
2020 Census

	1	2	3	4	5	6	7
Population	25,289	26,158	25,677	25,296	25,216	25,500	25,379
Deviation	-213	656	175	-206	-286	-2	-123
Deviation %	-0.8%	2.6%	0.7%	-0.8%	-1.1%	-0.0%	-0.5%
Other	7,309	18,518	19,947	19,161	11,234	13,526	13,065
Other %	28.9%	70.8%	77.7%	75.7%	44.6%	53.0%	51.5%
Latino	16,134	5,667	3,950	4,416	11,948	9,630	9,496
Latino %	63.8%	21.7%	15.4%	17.5%	47.4%	37.8%	37.4%
Asian	1,316	1,470	1,462	1,272	1,307	1,783	2,054
Asian %	5.2%	5.6%	5.7%	5.0%	5.2%	7.0%	8.1%
Black	530	503	318	447	727	561	764
Black %	2.1%	1.9%	1.2%	1.8%	2.9%	2.2%	3.0%

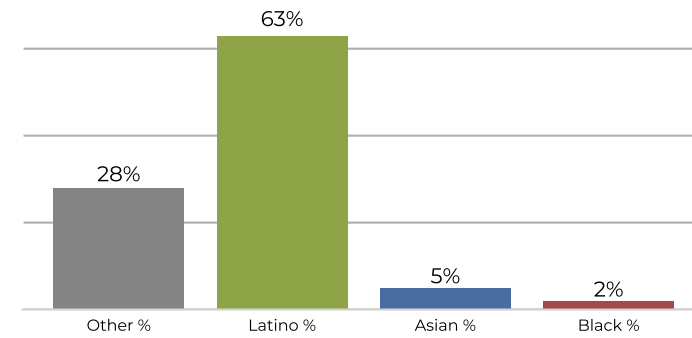
Citizen Voting Age Population (CVAP)

	1	2	3	4	5	6	7
Total CVAP	12,727	19,448	19,151	20,756	15,840	17,081	16,921
Other CVAP	6,377	15,877	16,518	17,206	10,933	11,856	11,115
Other CVAP %	50.1%	81.6%	86.3%	82.9%	69.0%	69.4%	65.7%
Latino CVAP	4,994	2,075	1,622	2,235	3,873	4,055	4,123
Latino CVAP %	39.2%	10.7%	8.5%	10.8%	24.5%	23.7%	24.4%
Asian CVAP	767	1,125	824	870	752	700	1,248
Asian CVAP %	6.0%	5.8%	4.3%	4.2%	4.7%	4.1%	7.4%
Black CVAP	589	371	187	445	282	470	435
Black CVAP %	4.6%	1.9%	1.0%	2.1%	1.8%	2.8%	2.6%

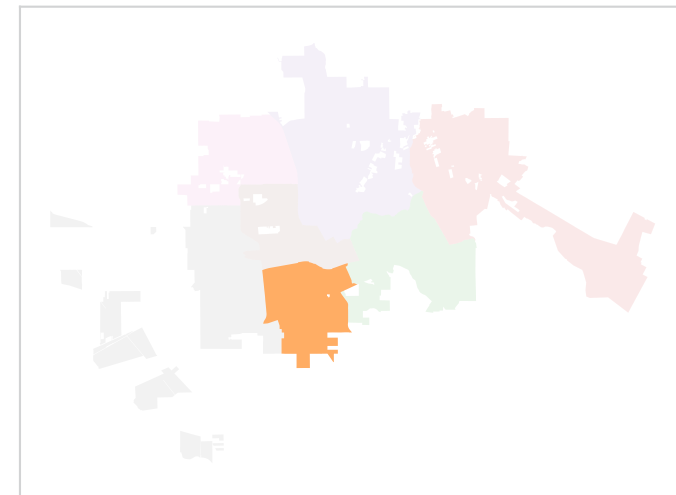
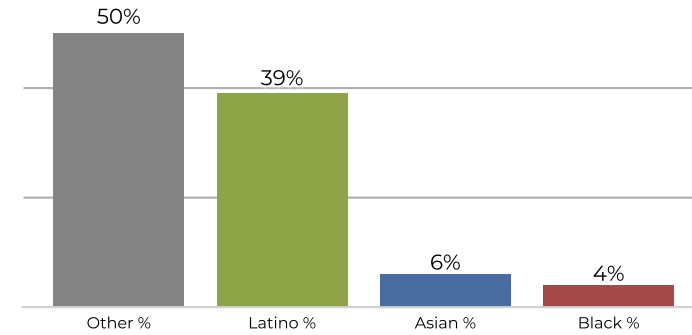
District 1



2020 Census

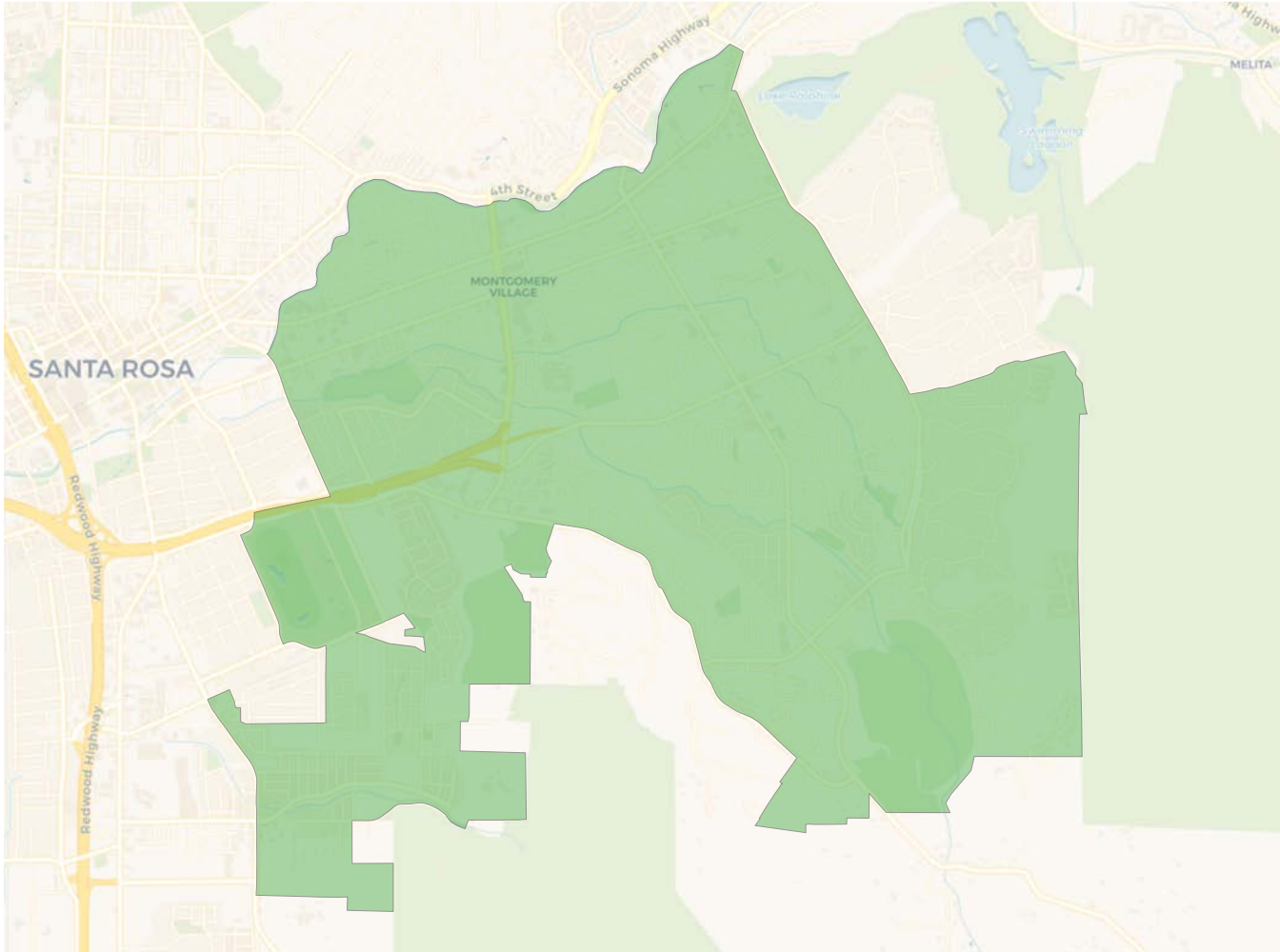


Citizen Voting Age Population

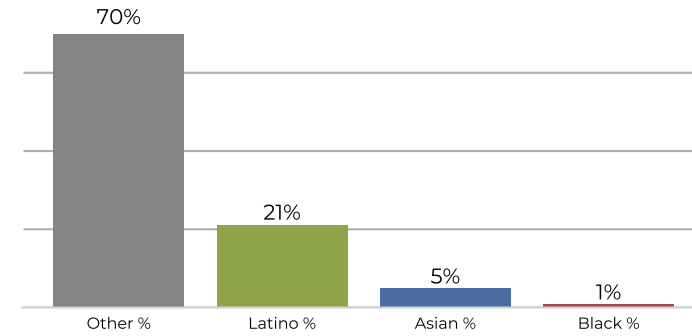


Population	Deviation	Deviation %	Other	Other %	Latino	Latino %	Asian	Asian %	Black	Black %
25,289	-213	-0.8%	7,309	28.9%	16,134	63.8%	1,316	5.2%	530	2.1%
Total CVAP	Other CVAP	Other CVAP %	Latino CVAP	Latino CVAP %	Asian CVAP	Asian CVAP %	Black CVAP	Black CVAP %		
12,727	6,377	50.1%	4,994	39.2%	767	6.0%	589	4.6%		

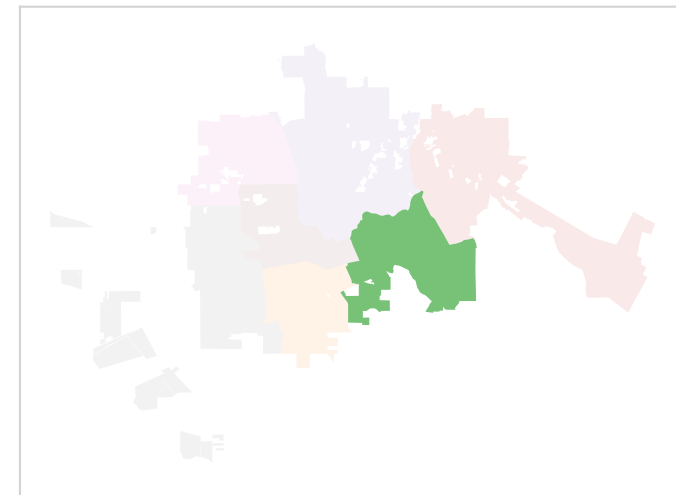
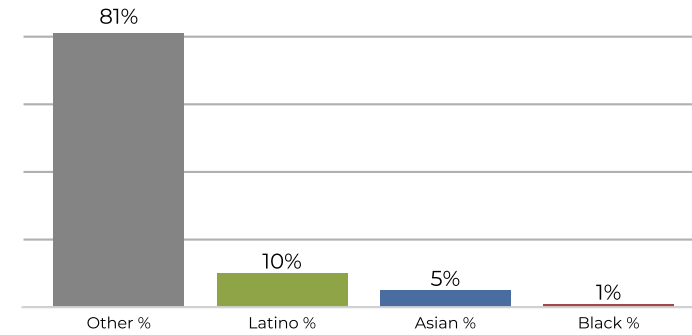
District 2



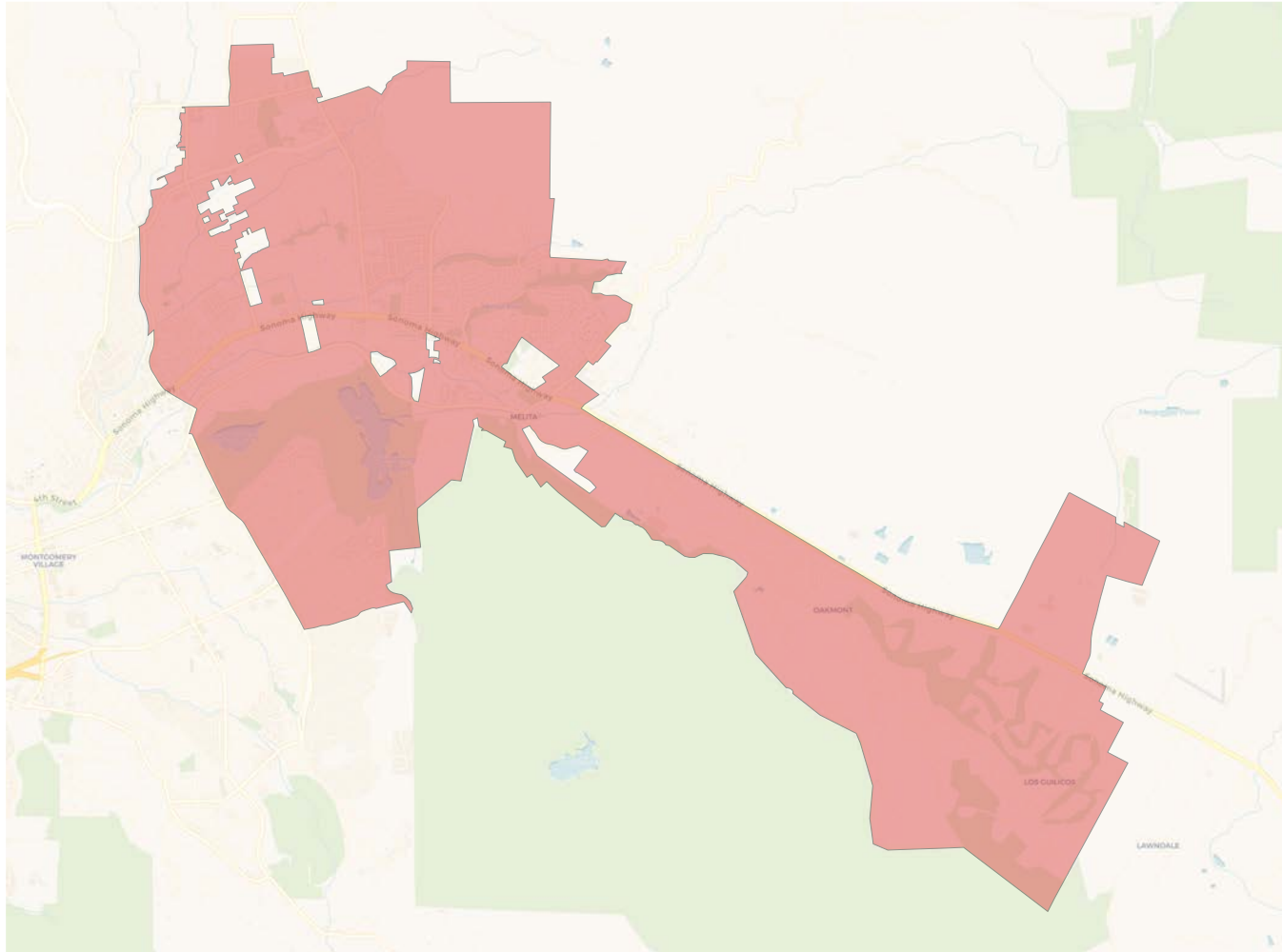
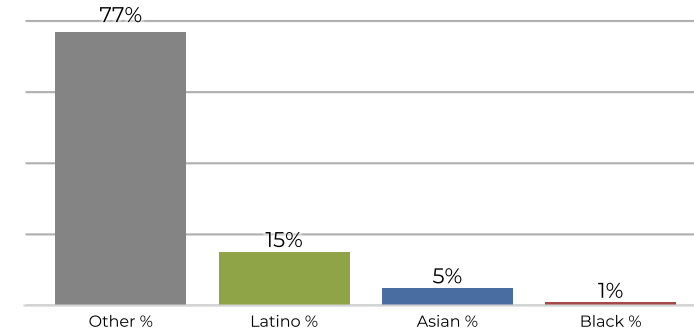
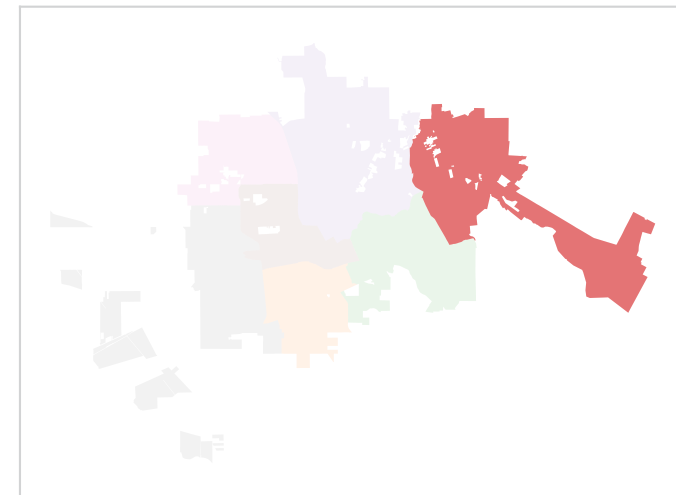
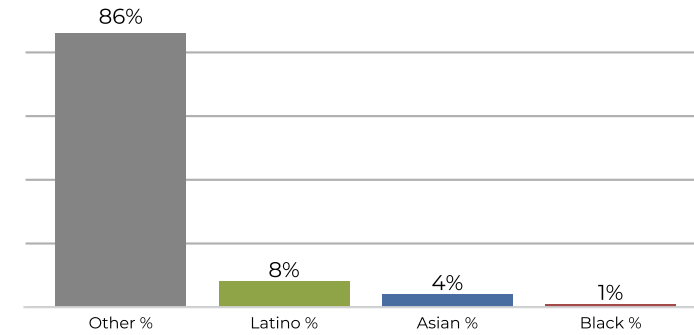
2020 Census



Citizen Voting Age Population

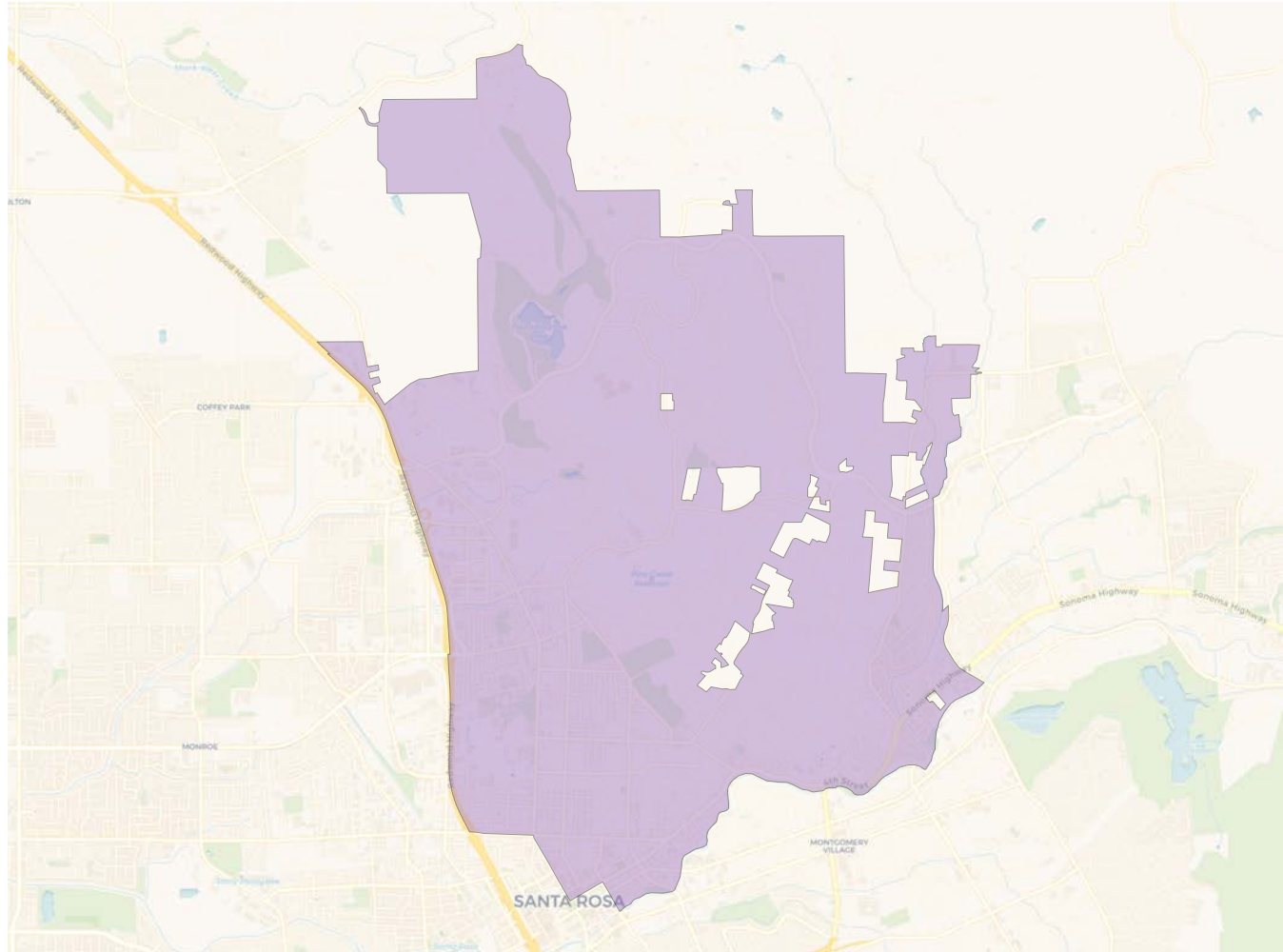


Population	Deviation	Deviation %	Other	Other %	Latino	Latino %	Asian	Asian %	Black	Black %
26,158	656	2.6%	18,518	70.8%	5,667	21.7%	1,470	5.6%	503	1.9%
Total CVAP	Other CVAP	Other CVAP %	Latino CVAP	Latino CVAP %	Asian CVAP	Asian CVAP %	Black CVAP	Black CVAP %		
19,448	15,877	81.6%	2,075	10.7%	1,125	5.8%	371	1.9%		

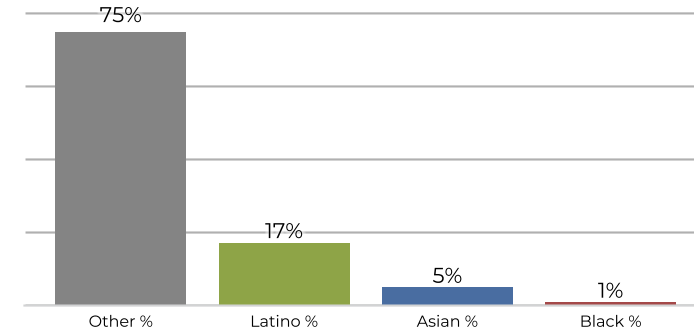
District 3

2020 Census

Citizen Voting Age Population


Population	Deviation	Deviation %	Other	Other %	Latino	Latino %	Asian	Asian %	Black	Black %
25,677	175	0.7%	19,947	77.7%	3,950	15.4%	1,462	5.7%	318	1.2%
Total CVAP	Other CVAP	Other CVAP %	Latino CVAP	Latino CVAP %	Asian CVAP	Asian CVAP %	Black CVAP	Black CVAP %		
19,151	16,518	86.3%	1,622	8.5%	824	4.3%	187	1.0%		

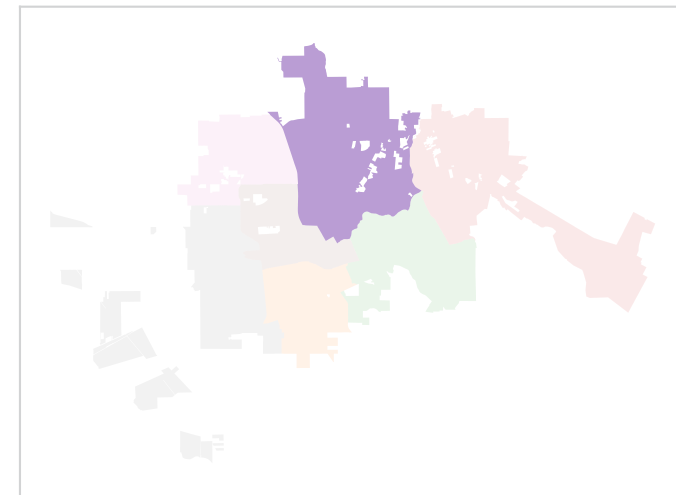
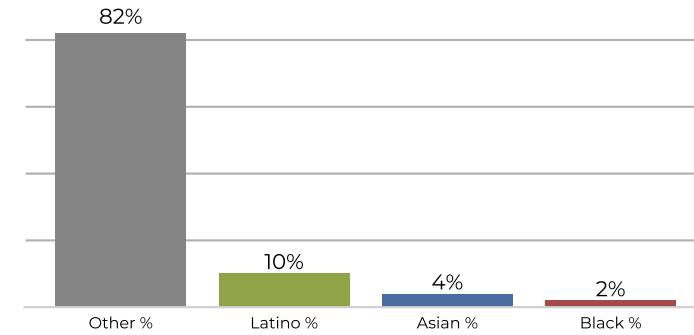
District 4



2020 Census

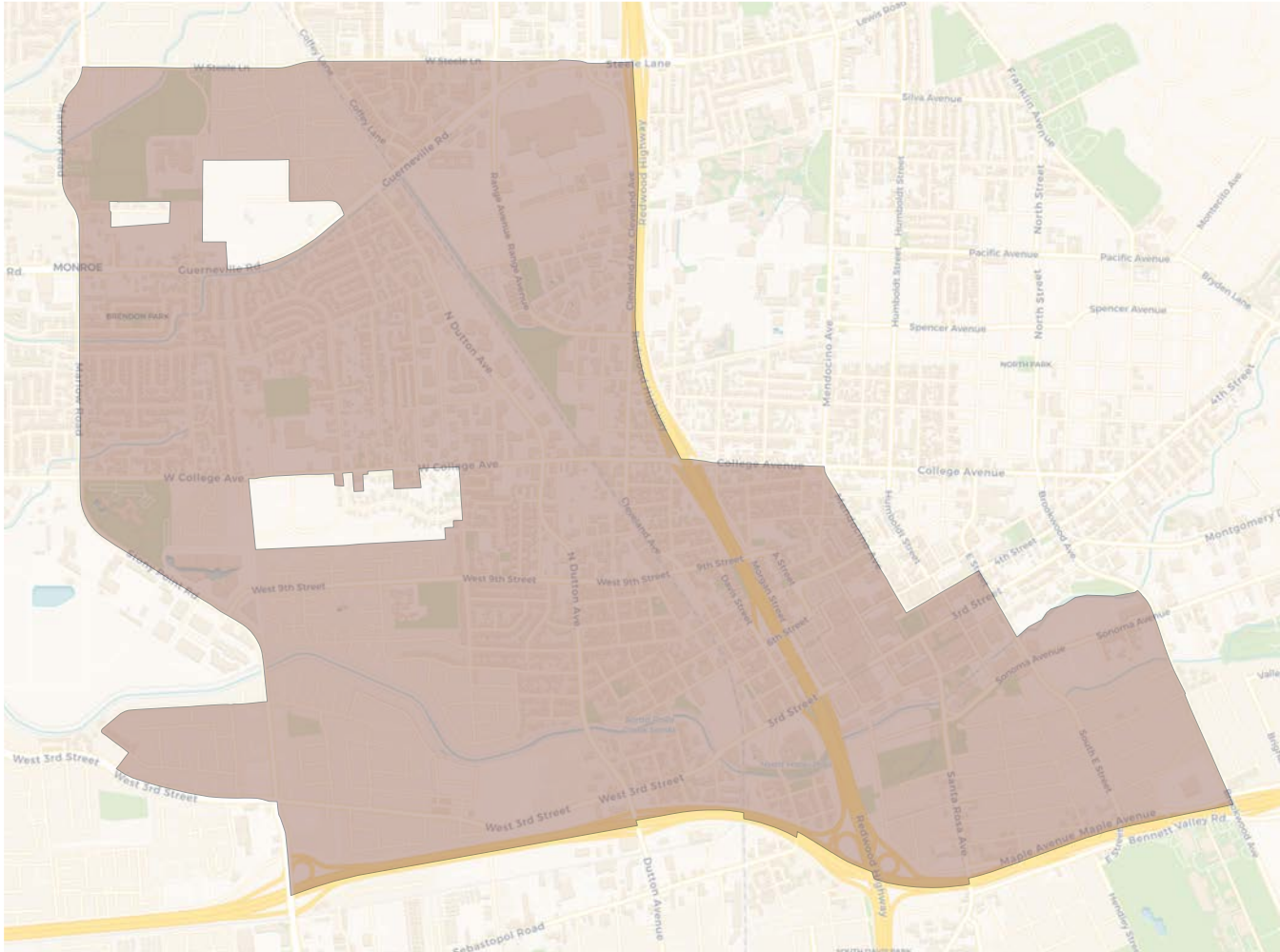


Citizen Voting Age Population

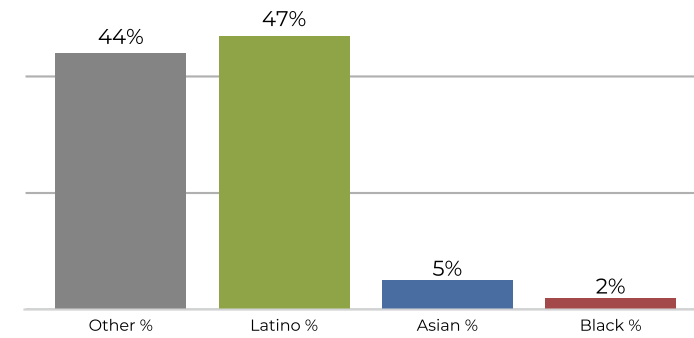


Population	Deviation	Deviation %	Other	Other %	Latino	Latino %	Asian	Asian %	Black	Black %
25,296	-206	-0.8%	19,161	75.7%	4,416	17.5%	1,272	5.0%	447	1.8%
Total CVAP	Other CVAP	Other CVAP %	Latino CVAP	Latino CVAP %	Asian CVAP	Asian CVAP %	Black CVAP	Black CVAP %		
20,756	17,206	82.9%	2,235	10.8%	870	4.2%	445	2.1%		

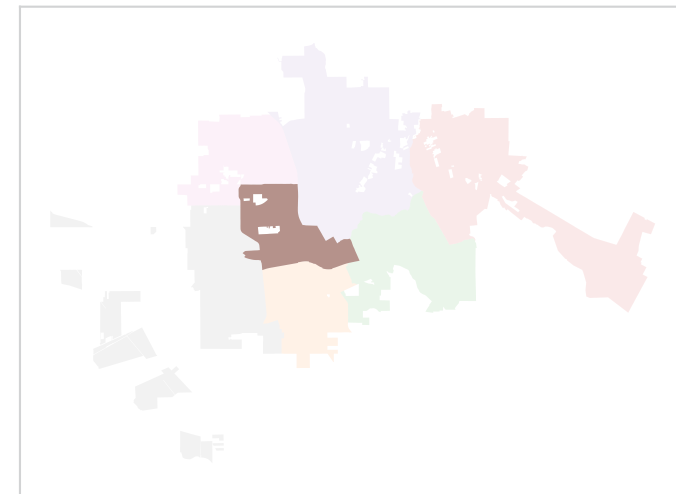
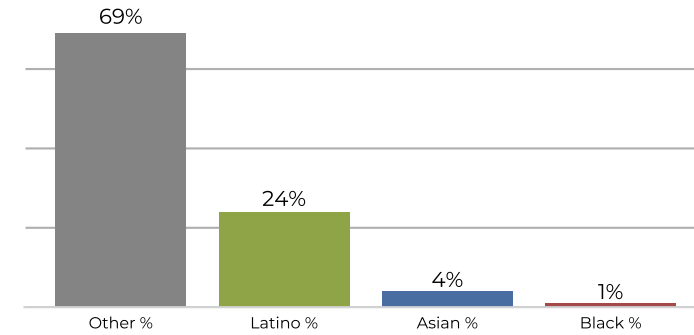
District 5



2020 Census

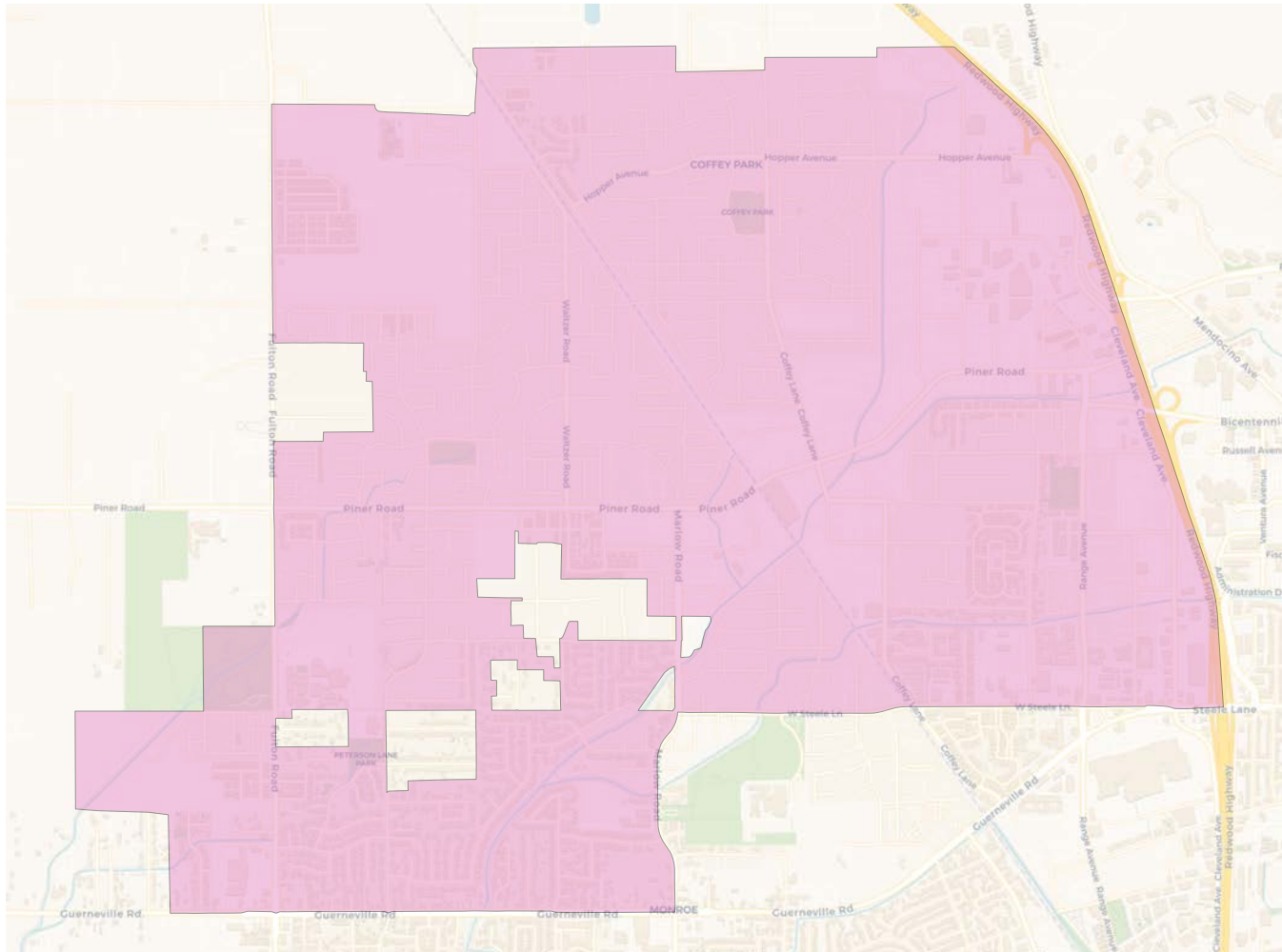


Citizen Voting Age Population

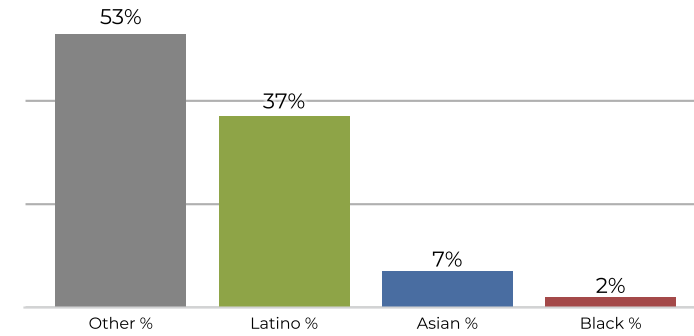


Population	Deviation	Deviation %	Other	Other %	Latino	Latino %	Asian	Asian %	Black	Black %
25,216	-286	-1.1%	11,234	44.6%	11,948	47.4%	1,307	5.2%	727	2.9%
Total CVAP	Other CVAP	Other CVAP %	Latino CVAP	Latino CVAP %	Asian CVAP	Asian CVAP %	Black CVAP	Black CVAP %		
15,840	10,933	69.0%	3,873	24.5%	752	4.7%	282	1.8%		

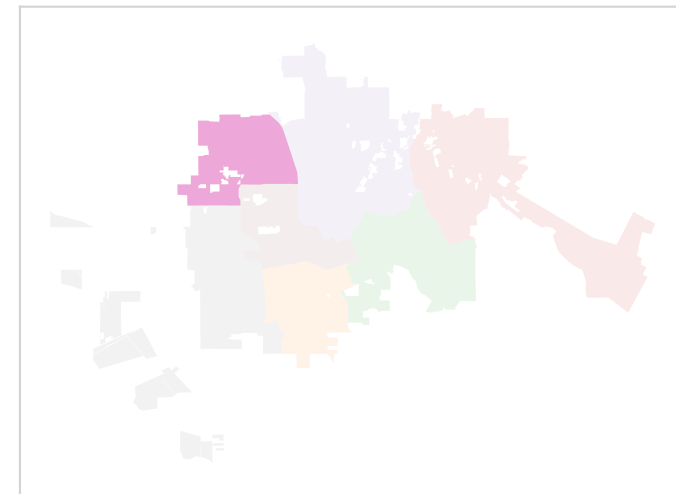
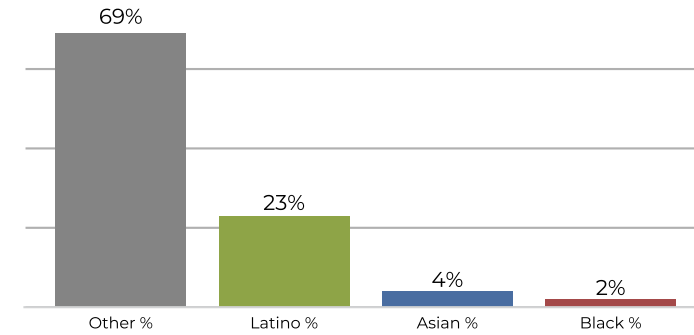
District 6



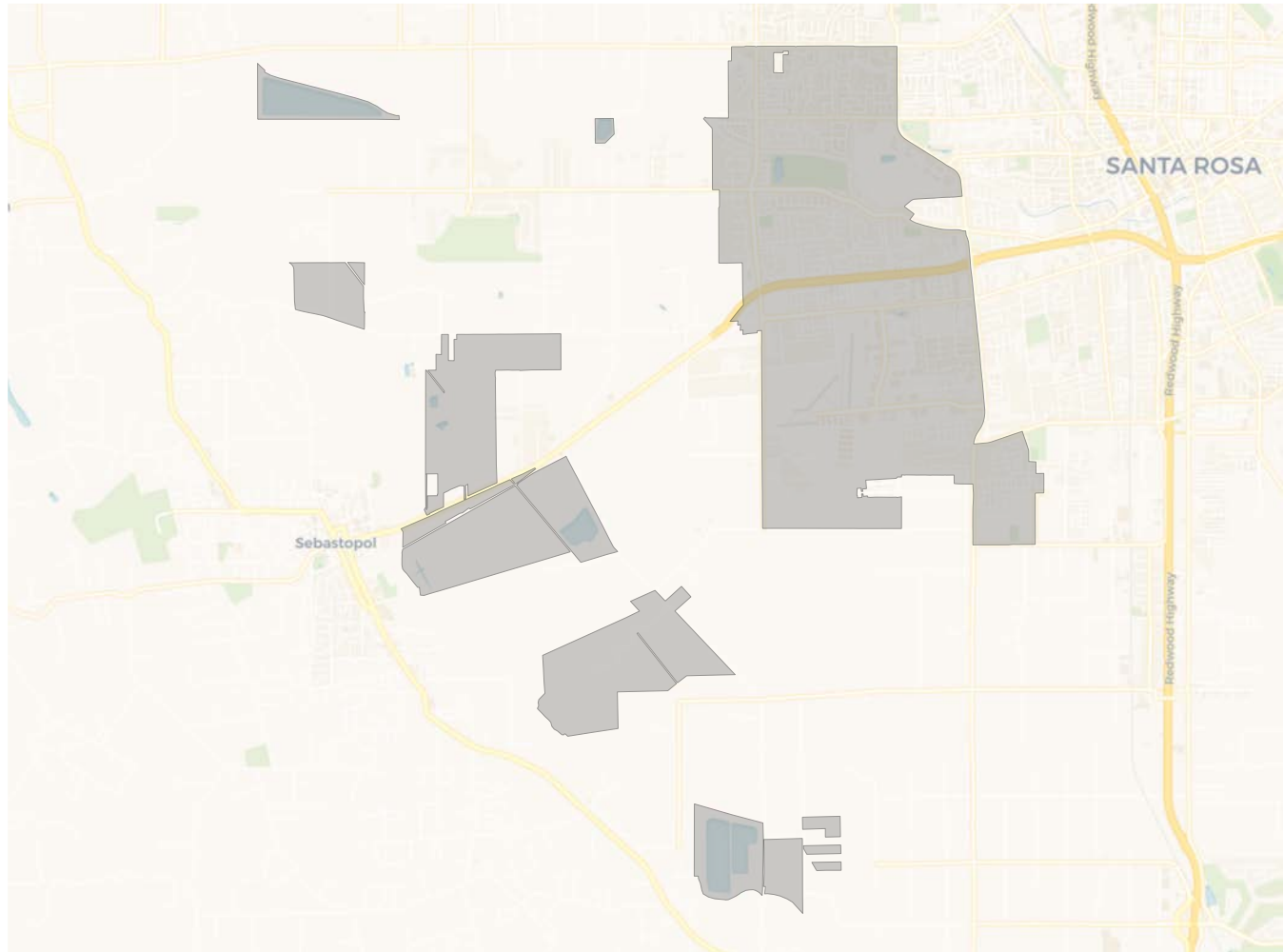
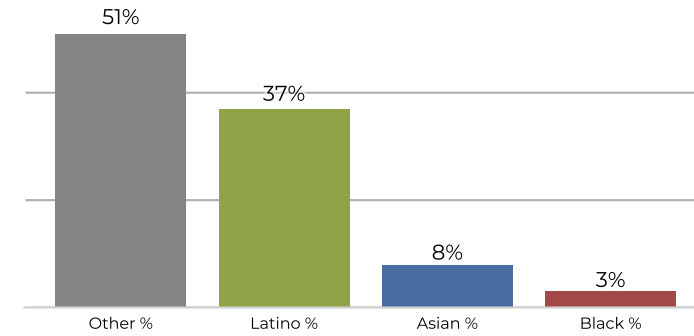
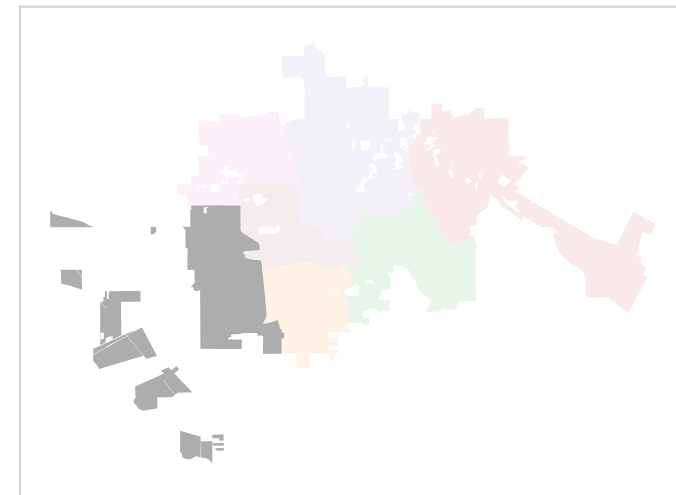
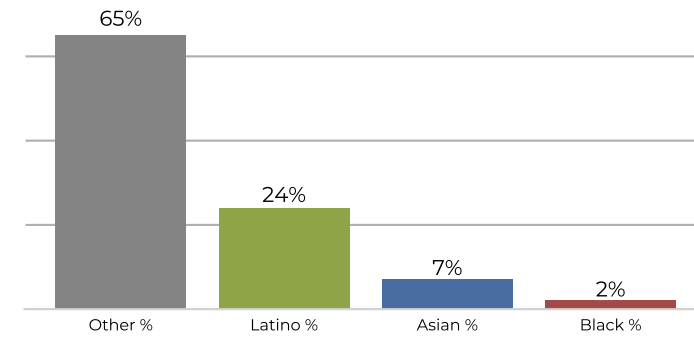
2020 Census



Citizen Voting Age Population



Population	Deviation	Deviation %	Other	Other %	Latino	Latino %	Asian	Asian %	Black	Black %
25,500	-2	-0.0%	13,526	53.0%	9,630	37.8%	1,783	7.0%	561	2.2%
Total CVAP	Other CVAP	Other CVAP %	Latino CVAP	Latino CVAP %	Asian CVAP	Asian CVAP %	Black CVAP	Black CVAP %		
17,081	11,856	69.4%	4,055	23.7%	700	4.1%	470	2.8%		

District 7

2020 Census

Citizen Voting Age Population


Population	Deviation	Deviation %	Other	Other %	Latino	Latino %	Asian	Asian %	Black	Black %
25,379	-123	-0.5%	13,065	51.5%	9,496	37.4%	2,054	8.1%	764	3.0%
Total CVAP	Other CVAP	Other CVAP %	Latino CVAP	Latino CVAP %	Asian CVAP	Asian CVAP %	Black CVAP	Black CVAP %		
16,921	11,115	65.7%	4,123	24.4%	1,248	7.4%	435	2.6%		