



Study Session: Proposed Organic Waste Processing Facility

Joe Schwall, Interim Deputy Director Utilities Operations



Santa Rosa Water | Our Future in Every Drop

Background

- County compost facility closed in 2015
 - Solid organic waste being hauled out of county
- State-mandated 75% reduction of organic waste to landfill by 2025
- SCWMA responsible agency



Background

- May 2017: SCWMA released RFP
- July 2017: City joined SCWMA effort to develop solution
- Joint effort expected to benefit from synergistic effects of locating adjacent to LTP



Background

- BPU approved Letters of Intent to Negotiate to four proposers of SCWMA's request
- SCWMA selected Renewable Sonoma to provide solids composting and processing
 - Exclusive Negotiation Rights (ENR) with SCWMA

Letter of Intent

ms your and our mutual inte
hich we spoke about last m
nt and enforceable

Current

- Renewable Sonoma seeks ENR with City to proceed with detailed design work
 - Agreement language under development



Renewable Sonoma's Proposal

Green-waste
and food waste
receiving



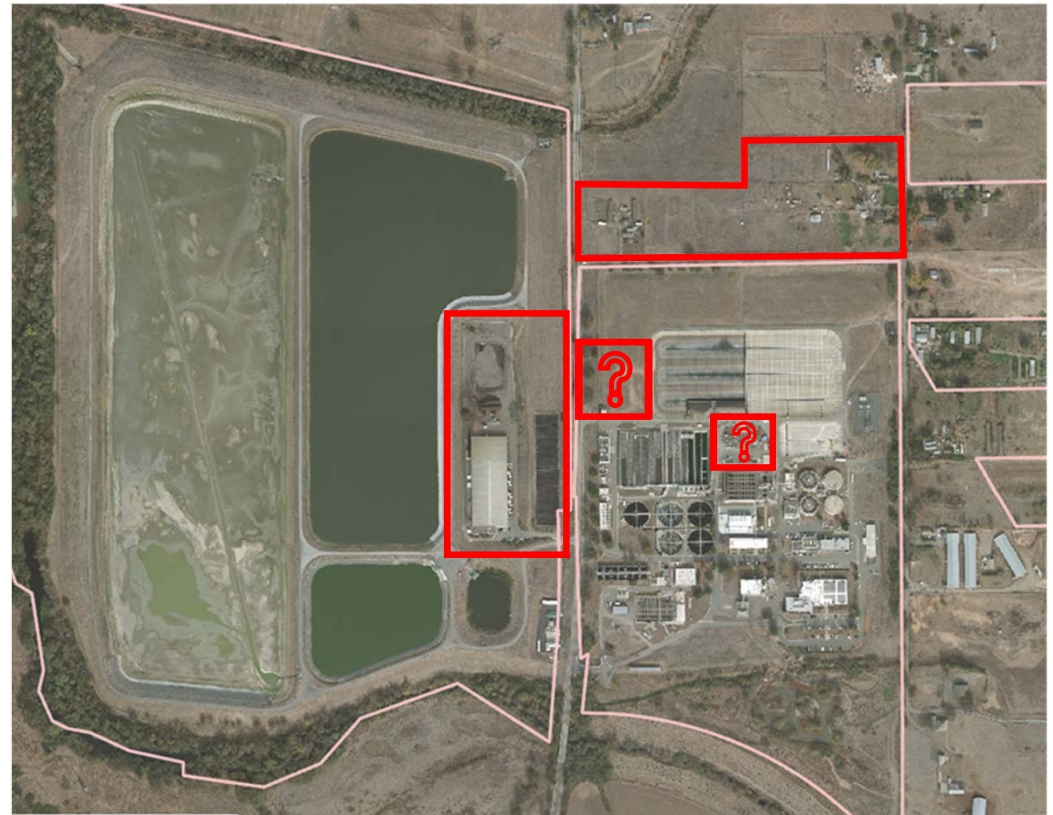
Composting

Anaerobic Digestion



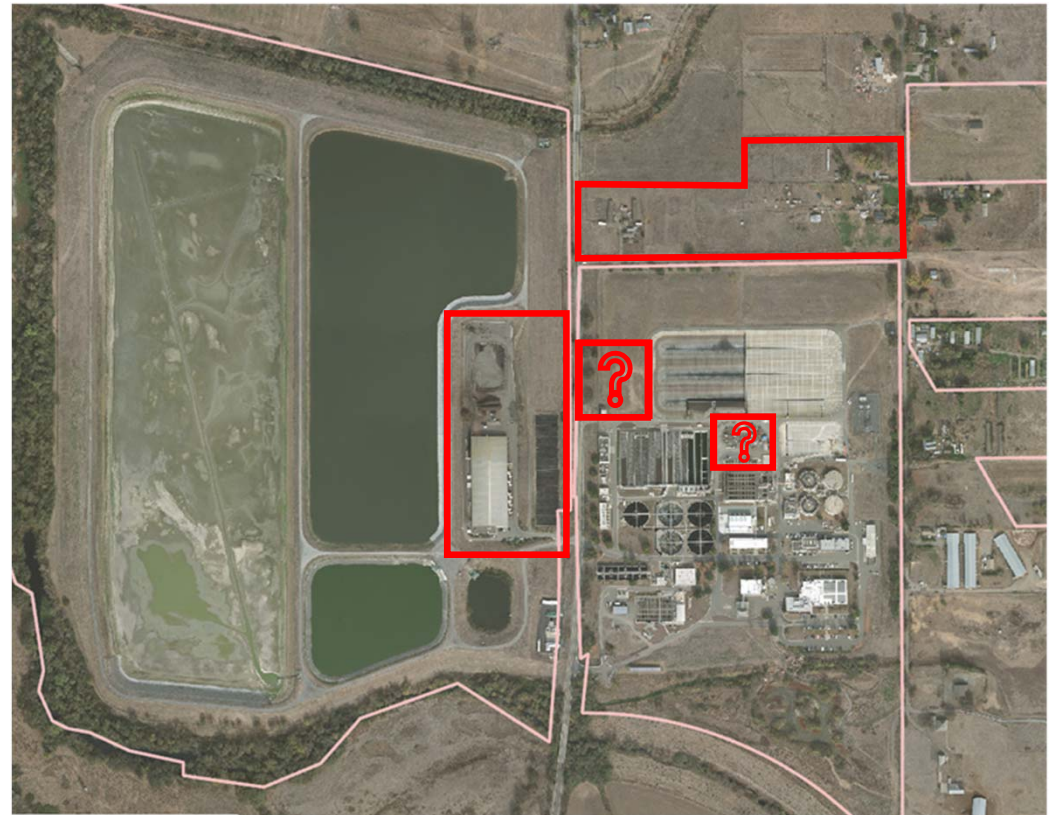
Preliminary Proposal from Renewable Sonoma

- Use existing City compost facility site at LTP
- Use adjacent parcel North of LTP
- Integrate solids processing and other operations with LTP



Preliminary Proposal

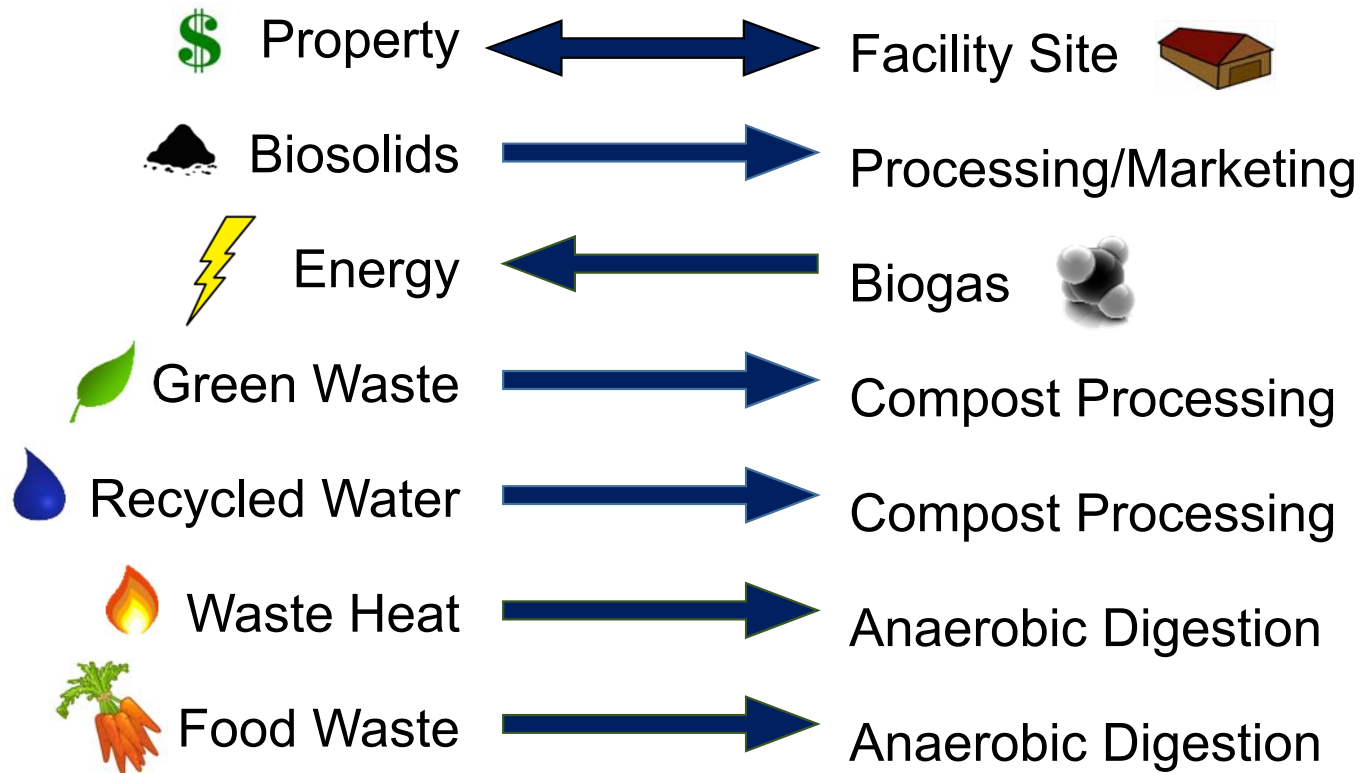
- Three Stages
 1. Treat biosolids currently processed at LTP compost facility
 2. Build solid organic waste processing facility
 - Compost
 - Anaerobic Digestion
 3. Potential future regional biosolids facility



Potential Synergistic Benefits

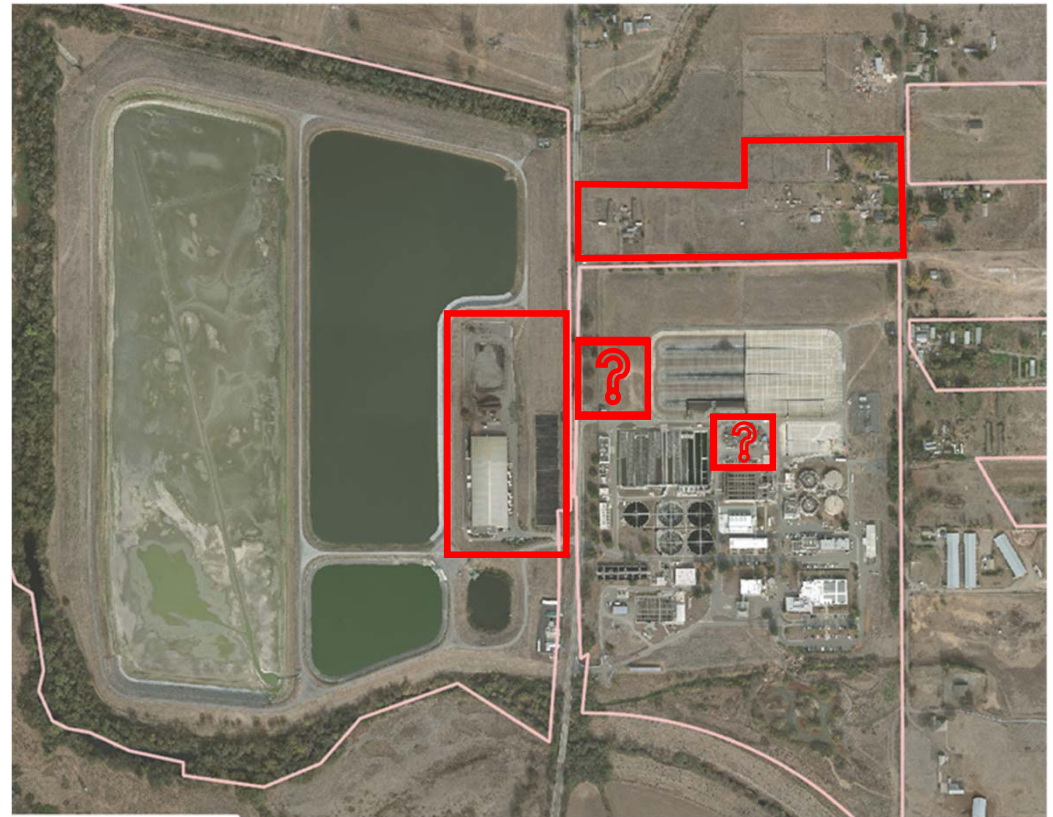
The City

Renewable Sonoma




Potential Benefits to the City / Ratepayers

- Lease revenue
- Bio-gas conversion to electricity
- Use for excess heat
- Reduced capital expenditures
- Lower operating expenses



Potential Challenges

- Term of agreement
 - Permitting
 - Pricing
 - Property
 - Gas
 - Heat
 - Water
 - Odors
 - Noise
 - Process(s) coordination
 - Storm Water
 - Biosolids facility (where?)
 - Operations (by whom?)
 - Size (Regional potential?)
 - City labor force
- 

Next Steps

- Contract Review Subcommittee to review ENR
- BPU approval of ENR
- For future BPU/CC Consideration:
 - Lease and Operational Agreements
 - Land use
 - Biosolids processing
 - Co-operations

Questions?

