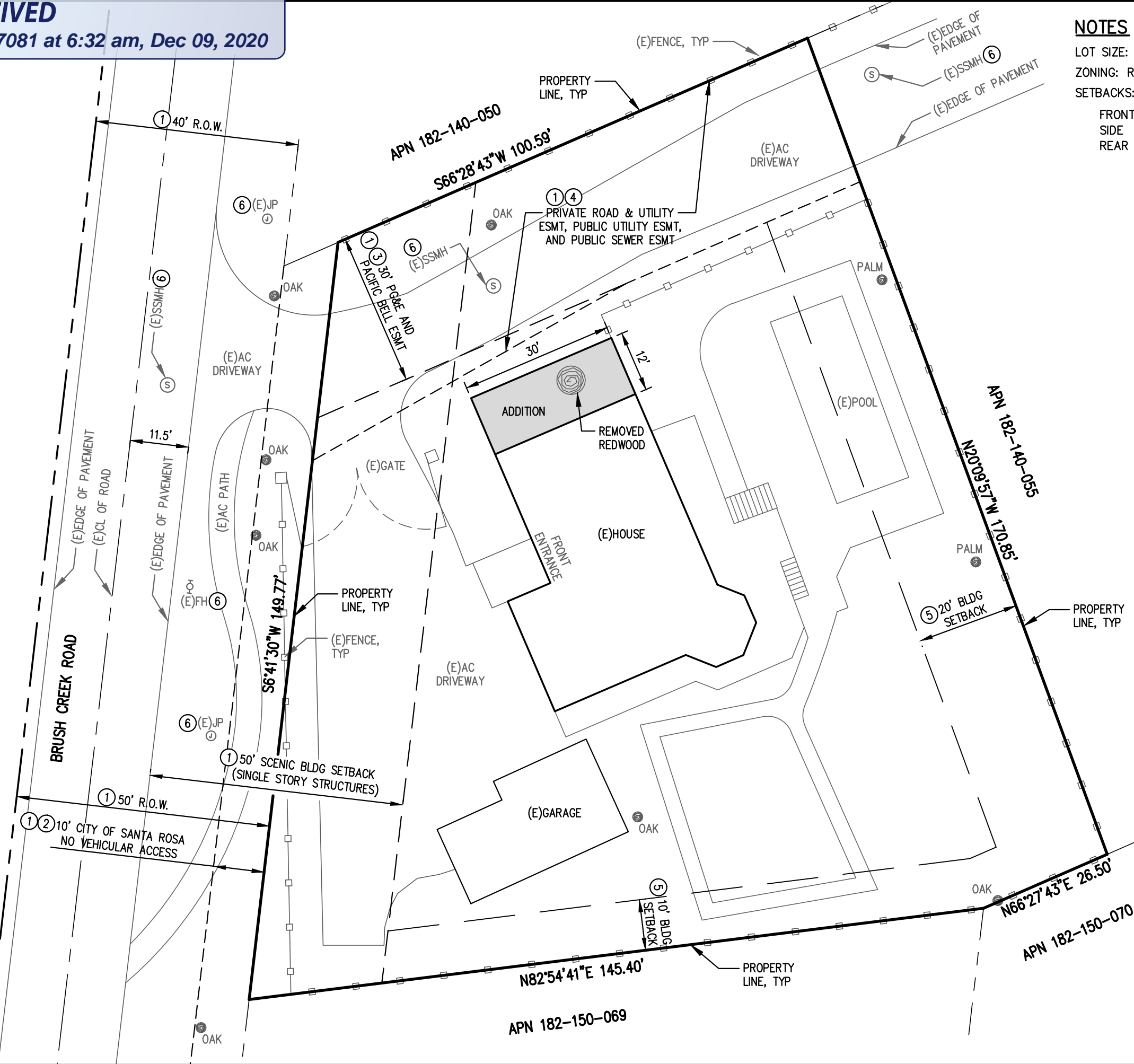
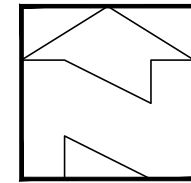


RECEIVED
By E07081 at 6:32 am, Dec 09, 2020

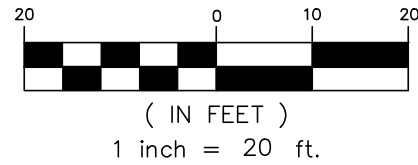


NOTES

LOT SIZE: 0.49 AC
ZONING: R-1-15-SR
SETBACKS:
FRONT = 20'
SIDE = 10'
REAR = 20'



GRAPHIC SCALE



REFERENCES

- ① PM NO. 609 BK 635 PGS 4-7
- ② 81-035240 SCR
- ③ 1993-0091035 SCR
- ④ 2001-149532 SCR
- ⑤ CITY SECTION 20-22.050 R-1-15-SR ZONING DISTRICT SETBACKS
- ⑥ CITY OF SANTA ROSA PUBLIC IMPROVEMENT PLANS NO. 2002-30

ABBREVIATIONS

∠	ANGLE
⊙	AT
±	PLUS/MINUS
AC	ASPHALT CONCRETE
APN	ASSESSOR PARCEL NUMBER
BK	BOOK
BLDG	BUILDING
CL, C/L	CENTERLINE
EP	EDGE OF PAVEMENT
ESMT	EASEMENT
EX, (E)	EXISTING
FH	FIRE HYDRANT
JP	JOINT UTILITY POLE
PGS	PAGES
MAX	MAXIMUM
MIN	MINIMUM
NTS	NOT TO SCALE
R.O.W	RIGHT OF WAY
RWD	REDWOOD
SCR	SONOMA COUNTY RECORDS
SSMH	SANITARY SEWER MANHOLE
TYP	TYPICAL

ROBERTSON ENGINEERING

2300 BETHARDS DR, STE L,
SANTA ROSA, CA 95405
T 707.523.7490
office@robertsonengineering.net



10/13/2020

SITE PLAN

LICHAU RESIDENTIAL ADDITION
APN 182-140-056
1900 BRUSH CREEK ROAD

CALIFORNIA

SONOMA COUNTY

SANTA ROSA