

File: T:\2018 PROJECTS\18103 DWG\ADOBE-DESIGN\ANNEXATION APPLICATION\EXHIBITS\18103-ANNEXATION MAP.DWG, 5/1/2019 12:38:19 PM, Aaron Rodriguez

LEGEND

- PROPOSED GENERAL PLAN AMENDMENT TO LOW DENSITY
- UNINCORPORATED PARCELS
- PARCEL LINES

ABBREVIATIONS

- CSC COMMUNITY SHOPPING CENTER
- PD PLANNED DEVELOPMENT
- R LOW-HIGH DENSITY RESIDENTIAL
- RR RURAL RESIDENTIAL
- *ZONING PER CITY OF SANTA ROSA ZONING MAP

HATCH LEGEND

- VERY LOW DENSITY RESIDENTIAL (0.2-2.0 UNITS PER ACRE)
- LOW DENSITY RESIDENTIAL (2.0-8.0 UNITS PER ACRE)
- MEDIUM DENSITY RESIDENTIAL (8.0-18.0 UNITS PER ACRE)

*LAND USE PER CITY OF SANTA ROSA GENERAL PLAN 2035

KEY NOTES:

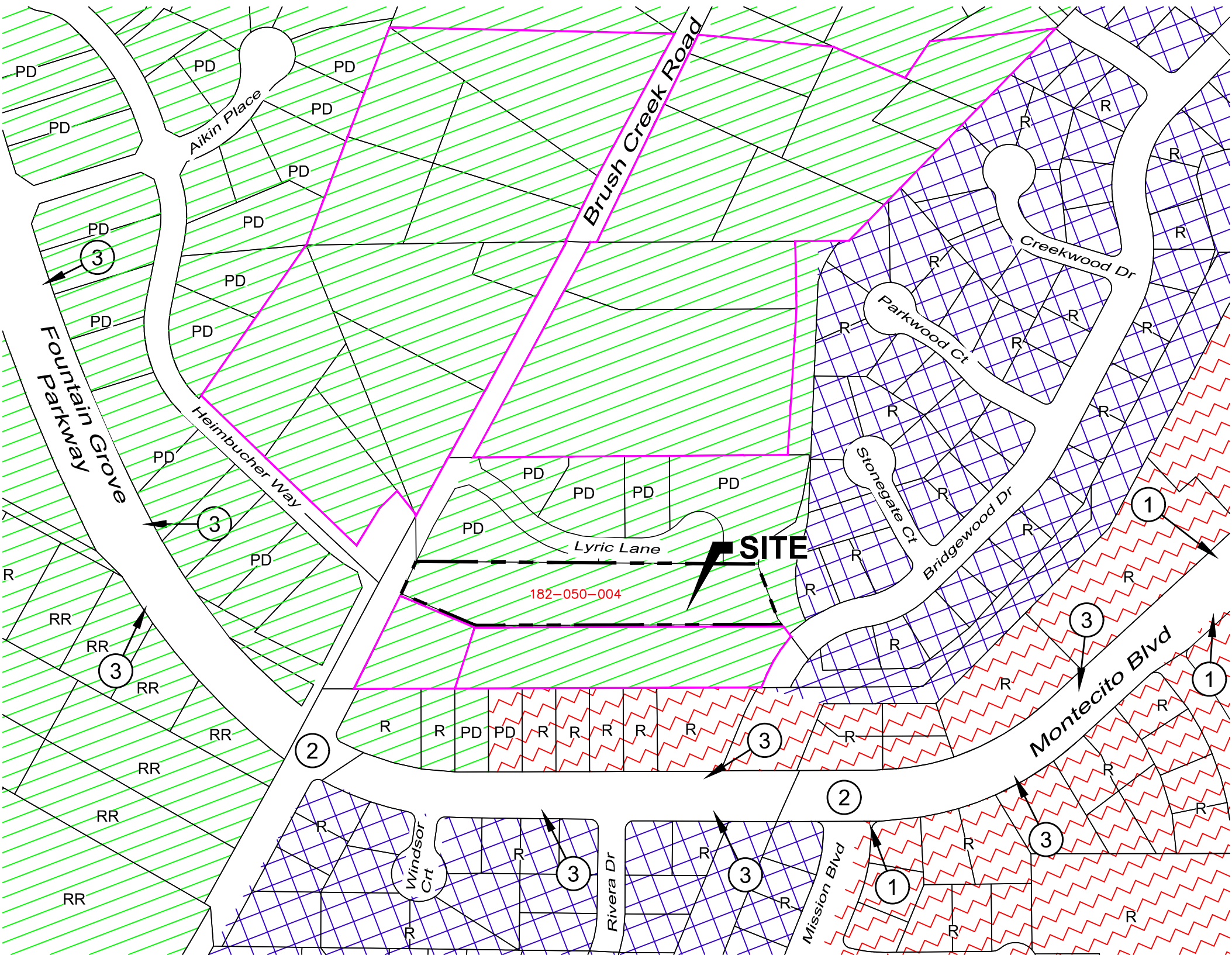
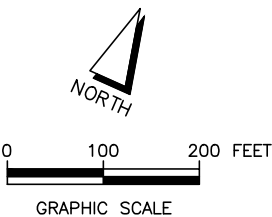
- 1 BUS STOP
- 2 SIGNALIZATION
- 3 BICYCLE LANE

RECEIVED

By jg16 at 2:17 pm, Jun 01, 2020

City of Santa Rosa
Planning & Economic
Development Department

RECEIVED



ANNEXATION MAP

Nils Welin & Klas Berghede
2210 Brush Creek Road, Santa Rosa, CA

May 27, 2020

adobe associates, inc.
civil engineering | land surveying | wastewater

1220 N. Dutton Ave., Santa Rosa, CA 95401
P. (707) 541-2300 F. (707) 541-2301
Website: www.adobeinc.com

"A Service You Can Count On!"