

CITY OF SANTA ROSA  
CITY COUNCIL

TO: MAYOR AND CITY COUNCIL  
SUBJECT: OAKMONT TRUNK SEWER RELOCATION-SUMMARY  
VACATION OF PUBLIC UTILITY EASEMENTS  
STAFF PRESENTER: NORMAN AMIDON, ASSOCIATE CIVIL ENGINEER  
TRANSPORTATION AND PUBLIC WORKS DEPARTMENT  
AGENDA ACTION: RESOLUTION

---

ISSUE(S)

Should the City Council, by resolution, summarily vacate public utility easements for sanitary sewer on eight parcels, located at 6044, 6200, 6300, 6350, 6350 Channel Drive, 0 Melita Road (APN 031061003), 400, 410 and 415 Elnoka Lane?



COUNCIL GOALS AND STRATEGIES

Goal 6: Committed to Making Santa Rosa a Community Where People Feel Safe to Live, Work, and Play

Relocation of the compromised sewer trunk line away from the banks of Oakmont Creek helped protect and insure the health of this waterway.

BACKGROUND

Public utility easements were established in the mid 1960s to provide sewer collection service for the Oakmont area. In November of 2011, a new sewer main (in new public utility easements acquired from the property owners) was placed into service both parallel and to the south of the existing sewer main. The new sewer main was installed as part of the Oakmont Trunk Sewer Relocation Project.

ANALYSIS

1. The Oakmont Trunk Sewer Relocation project was completed in May of 2012. As part of the easement purchase agreements for new public utility easements, the existing public utility easements were to be vacated upon completion of the trunk sewer relocation project.
2. Pursuant to Section 8333 of the Streets and Highways Code, the City may summarily vacate a public utility easement which has been superseded by relocation. Since the existing sewer main has been replaced and the old public

utility easements are being superseded by relocation, summary vacations are requested.

3. The existing easements contain no other public facilities. The City Utilities, Transportation and Public Works, and Community Development Departments have no concerns associated with the vacations.

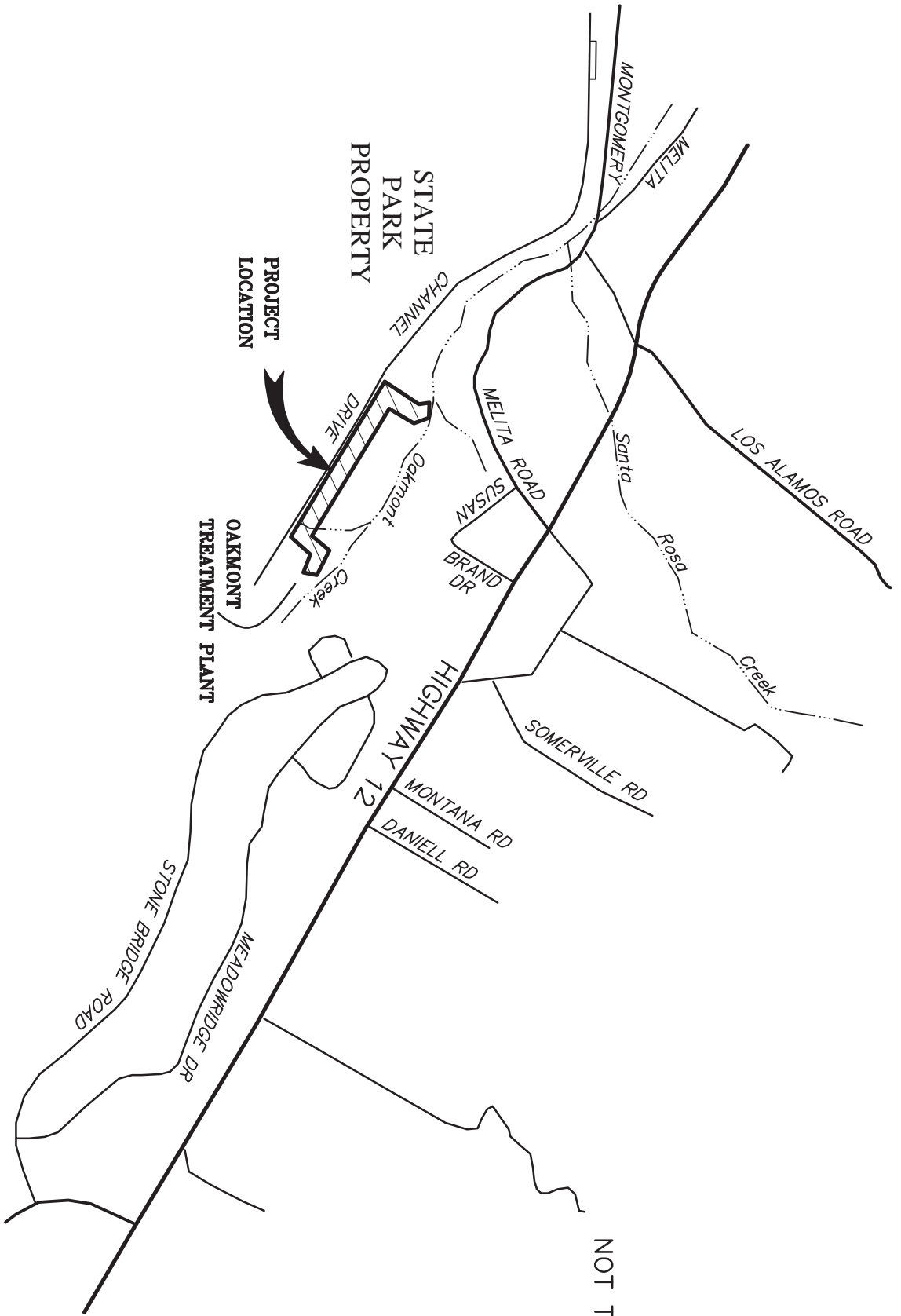
### RECOMMENDATION

It is recommended by the Transportation and Public Works Department that the Council, by resolution, approve summary vacations for public utility easements for sanitary sewer located at 6044, 6200, 6300, 6350 Channel Drive, 0 Melita Road (APN 031061003), 400, 410 and 415 Elnoka Lane.

Author: Norman Amidon

Attachments:

- Location Map
- Parcel Plan



NOT TO SCALE

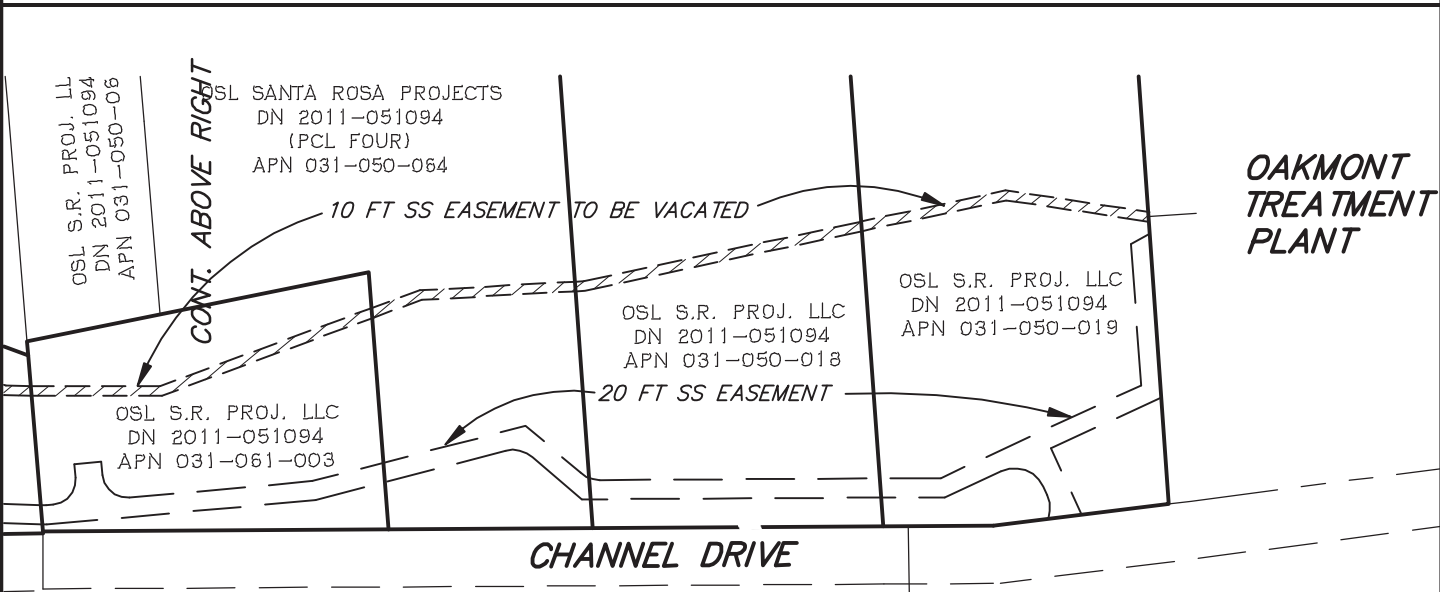
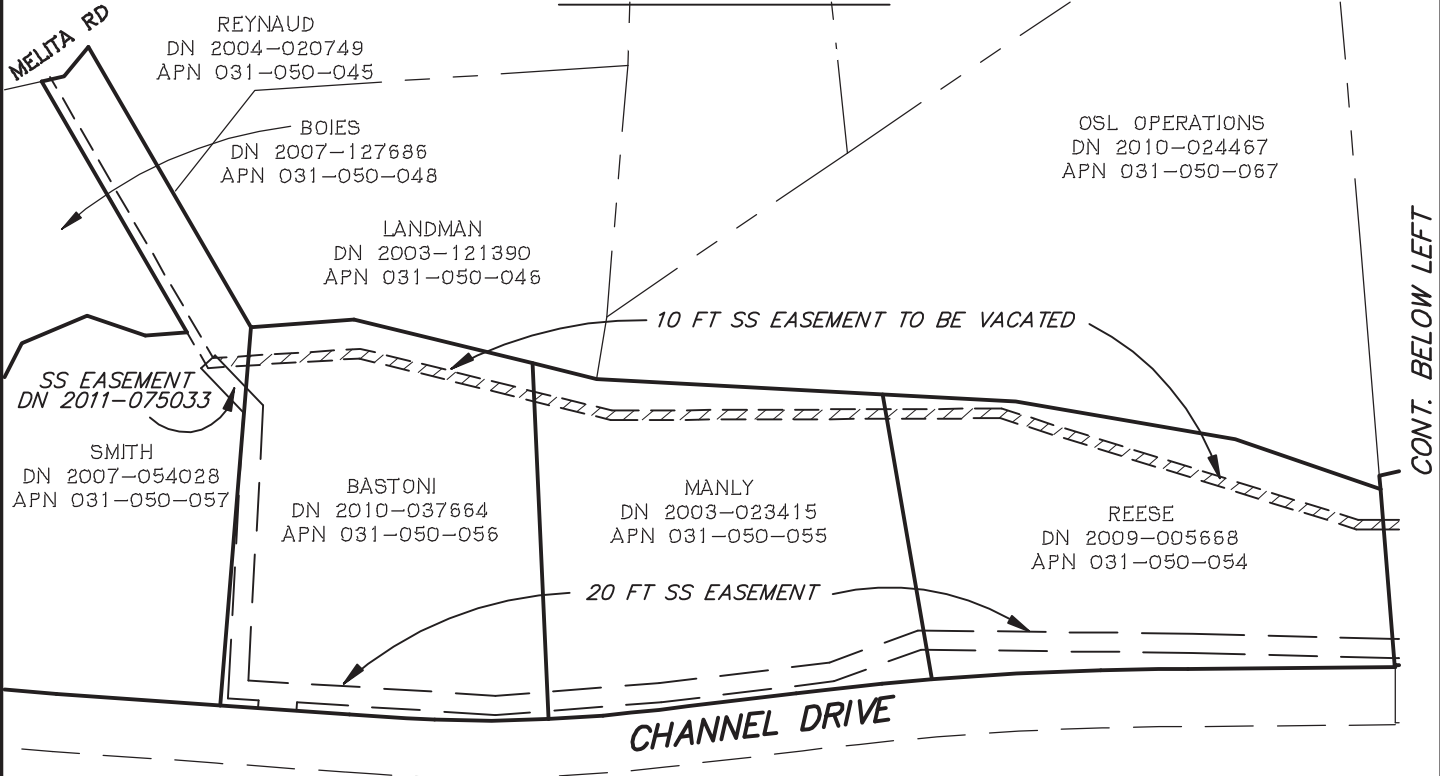


**OAKMONT TRUNK SEWER RELOCATION  
CONTRACT # 00057  
LOCATION MAP**

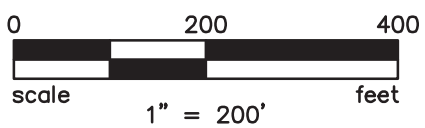
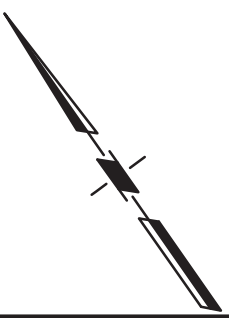


CIVIL ENGINEERS • URBAN PLANNERS • LAND SURVEYORS • LANDSCAPE ARCHITECTS  
15 THIRD STREET, SANTA ROSA, CA 95401  
TEL (707) 542-6451 FAX (707) 542-5212

# OAKMONT TRUNK SEWER RELOCATION CONTRACT #00057 PARCEL PLAN



**ANNADEL STATE PARK**



[AutoCAD file name: 01065-A-Location Map.dwg ] [Xref files: 01065AG-BNDY; 01065AG-HC ]

THIS EXHIBIT IS FOR GRAPHIC  
PURPOSES ONLY, ANY ERRORS  
OR OMISSIONS SHALL NOT  
AFFECT THE DEED DESCRIPTION