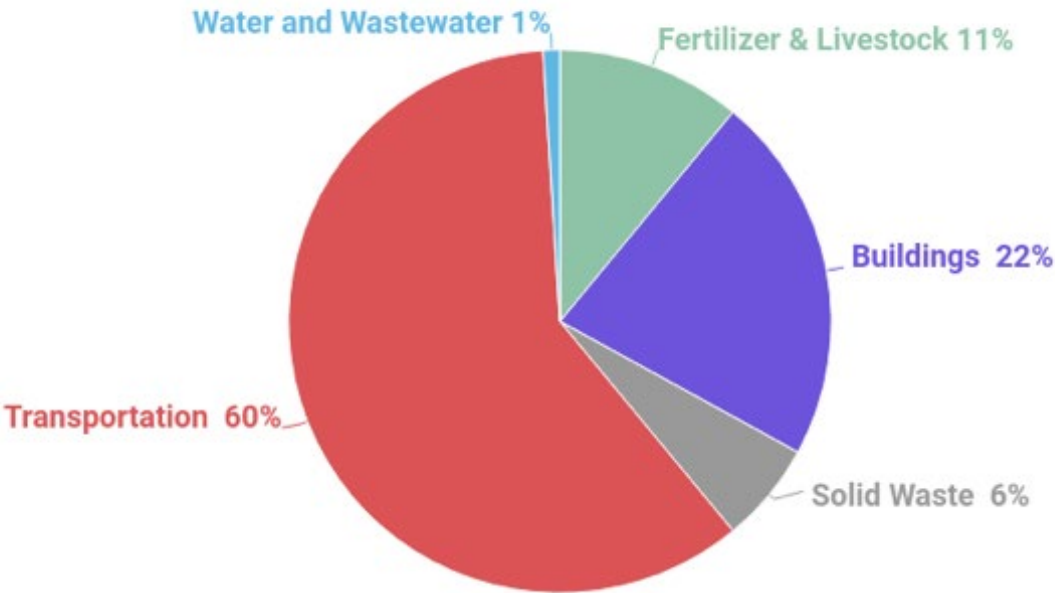


Sonoma County Greenhouse Gas Inventory

Santa Rosa Climate Action Subcommittee
April 21, 2021



2018 Greenhouse Gas Emissions by Sector

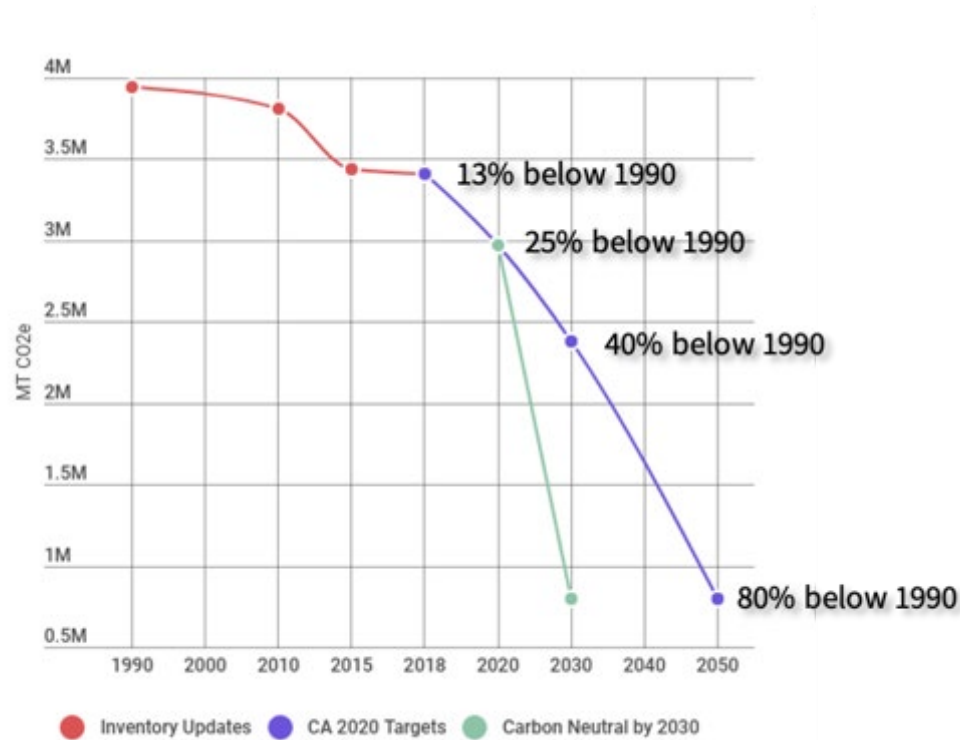


COUNTYWIDE EMISSIONS



Sector	% Change 1990-2018
Transportation	7%
Buildings	-37%
Fertilizer and Livestock	-1%
Solid Waste	-47%
Water and Wastewater	-71%
Sonoma County Total	-13%

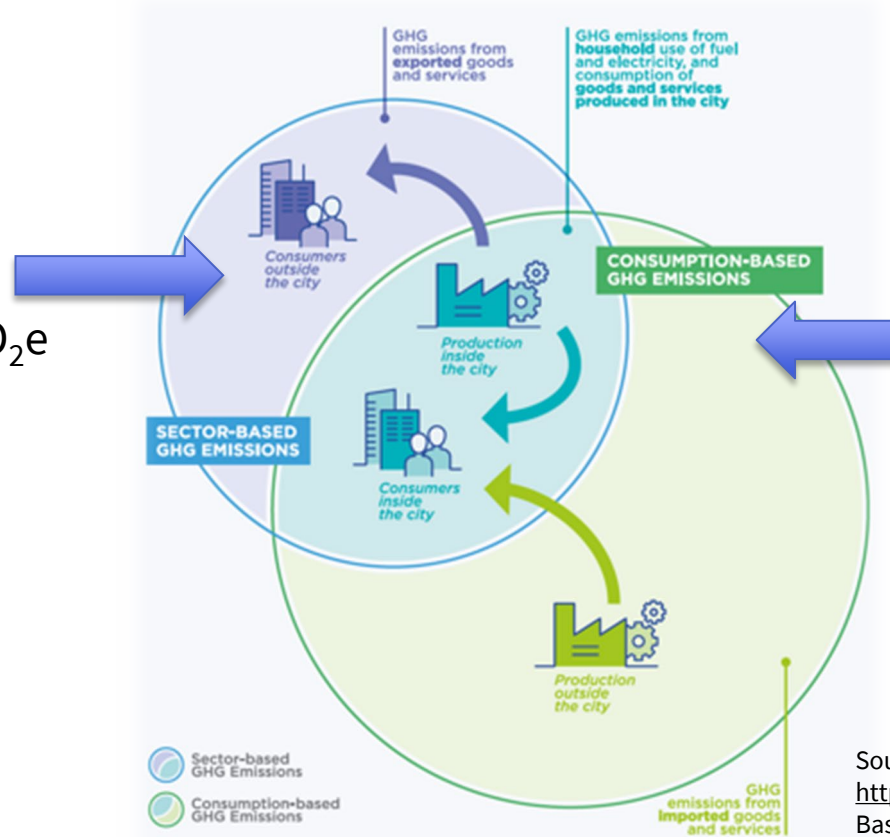
 **To meet our 2020 goal, we must reduce emissions by another 0.5 million MT CO₂e.**



GHG Emissions = Activity Data x Emissions Factor

Sector	Activity Data	Emissions Factor
On road transportation	Vehicle Miles Traveled (VMT) <ul style="list-style-type: none">• Sonoma County Travel Demand Model• California Highway Performance Monitoring System (HPMS)	Emission FACTors (EMFAC) model
Building Energy	Electricity usage (KWh) <ul style="list-style-type: none">• Sonoma Clean Power• PG&E	The Climate Registry eGRID2016
Building Energy	Gas usage (therms) <ul style="list-style-type: none">• PG&E	ICLEI Community Protocol

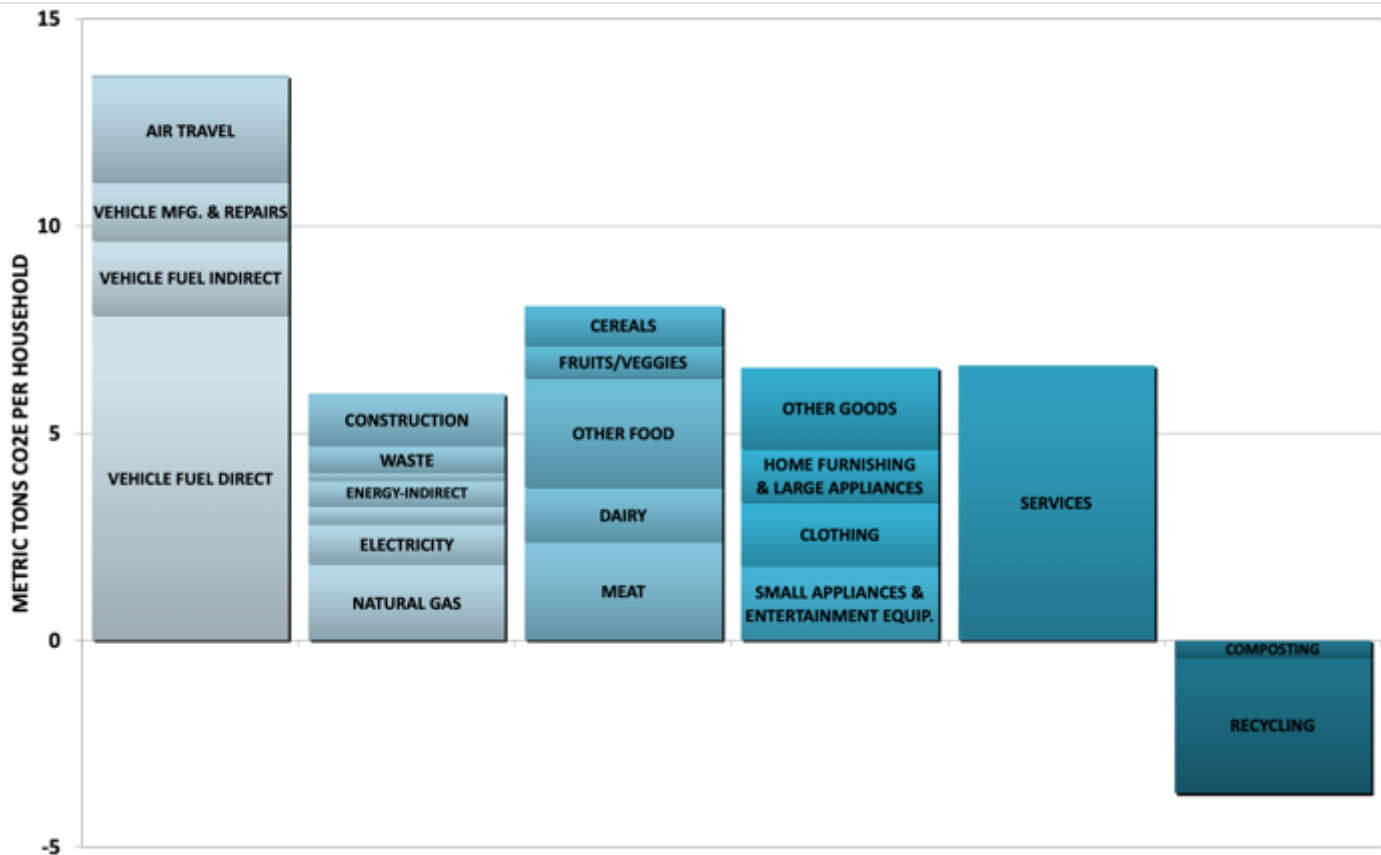
2015 sector-based
emissions =
3.44 million MT CO₂e



2015 consumption-based emissions =
7.2 million MT CO₂e

Sources: Cool Climate Network,
<https://coolclimate.berkeley.edu/>; Consumption-Based GHG Emissions of C40 Cities,
<https://www.c40.org/researches/consumption-based-emissions>

2015 AVERAGE SONOMA COUNTY HOUSEHOLD CARBON FOOTPRINT



Source: <https://coolclimate.berkeley.edu/rcpa.ca.gov>

- Electricity and gas usage
- Water usage
- Solid waste tonnage recycled, landfilled, composted, diverted
- Number of Sonoma Clean Power customers (residential/nonresidential)
- Transit ridership by provider
- Retail gasoline and diesel sales
- Electric vehicle sales
- Number of EV charging stations
- Number of energy retrofits completed
- Other?

QUESTIONS?

THANK YOU!

Tanya Narath
Director of Climate Programs
Tanya.Narath@rcpa.ca.gov

