

PRELIMINARY 2016/17 SUBREGIONAL SYSTEM BUDGET AND ALLOCATION OF COSTS



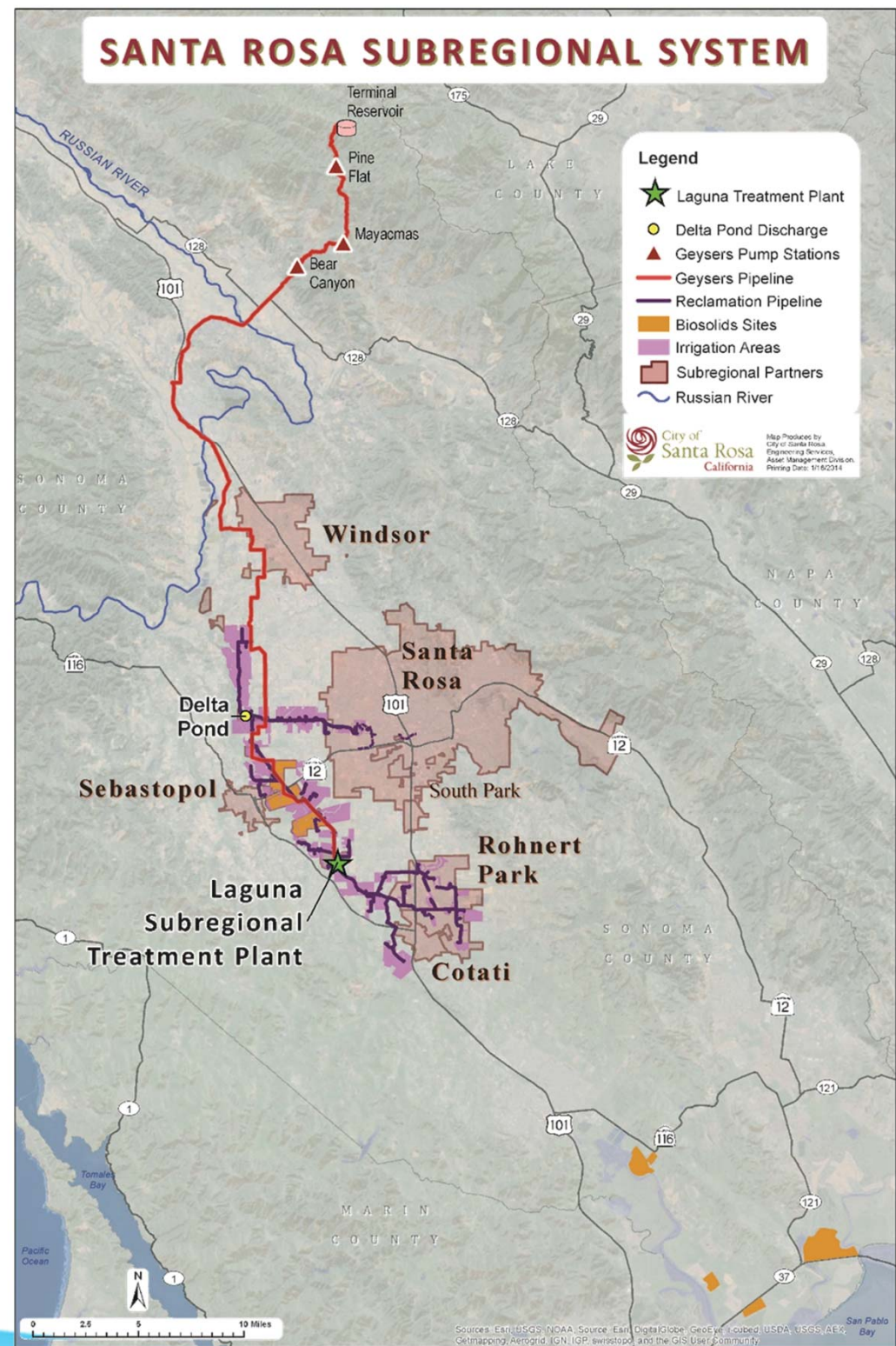
City Council
April 12, 2016



Santa Rosa Water | Our Future in Every Drop

Subregional System & Wastewater Treatment Plant – Subregional Agreement:

- Santa Rosa
- Rohnert Park
- Cotati
- Sebastopol
- South Park County Sanitation District



Subregional Budget Review Timeline

- 3/10 - Preliminary SubTAC review of the O&M and CIP requests and preliminary allocations
- 3/17 - Board of Public Utilities Study Session – all Santa Rosa Water and Subregional O&M and CIP
- 4/7 - SubTAC recommendation to BPU
- 4/7 - BPU recommendation to City Council
- 4/12 - City Council Subregional budget preliminary approval
- 5/1 - Notify User Agencies of operating and debt requirements for 2016/17



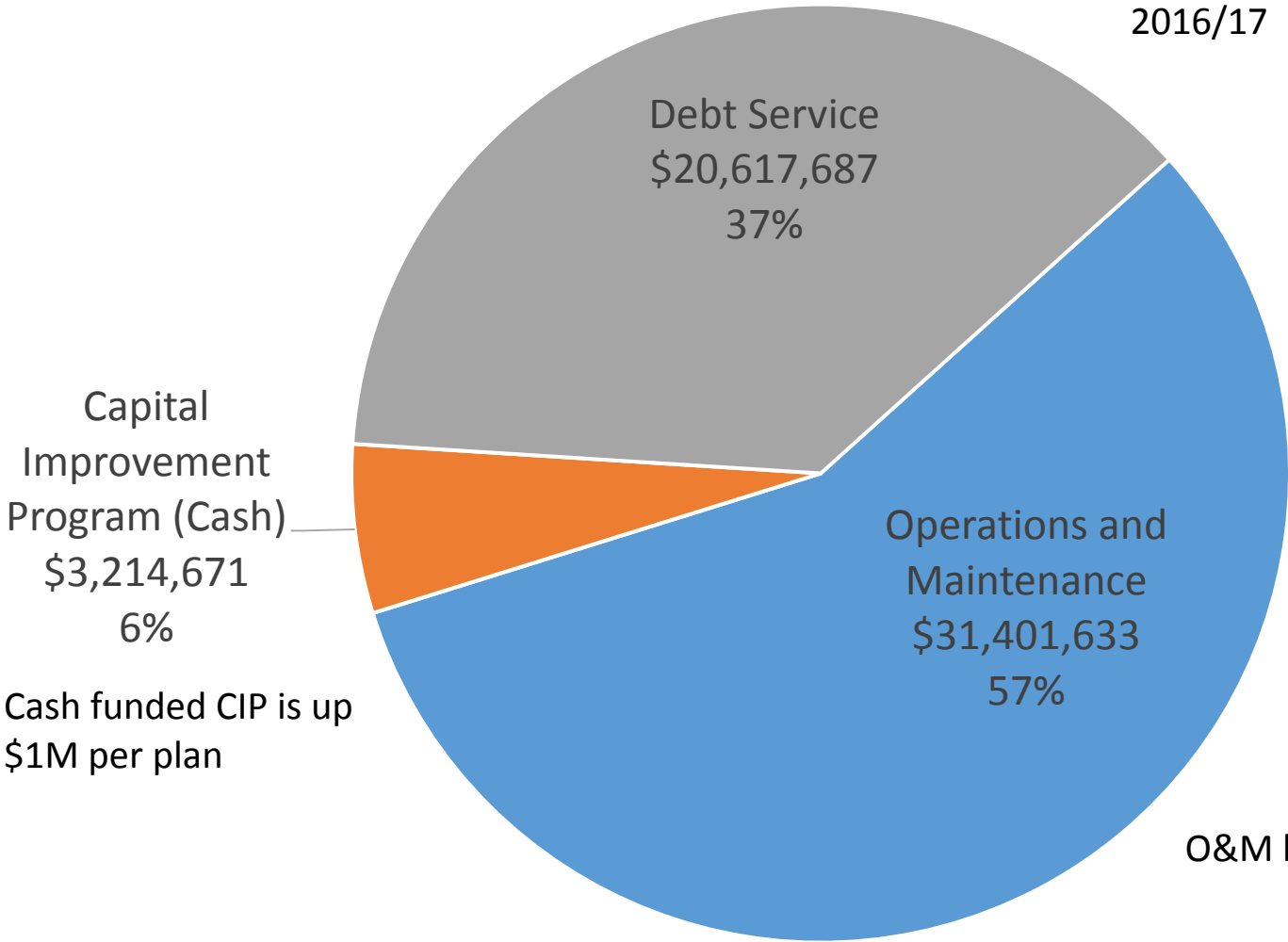
Subregional Operating Expenditures Assure:

- Wastewater treatment operations, recycled water distribution, and biosolids disposal
- NPDES permit compliance activities including monitoring and reporting
- Mandated air quality permitting, monitoring, and reporting activities
- Hazardous materials and waste disposal permitting, monitoring, and reporting activities



Subregional Expenses

Debt service is down 18% in 2016/17



Cash funded CIP is up \$1M per plan

O&M budget is up 4%

Total 2016/17 Allocation

2016/17

	O&M Contribution		Debt Service		Total	\$ Change from 2015/16	% Change from 2015/16	% from each Agency - total
Santa Rosa	\$23,413,670	72.89%	\$15,852,284	76.89%	39,265,954	-2,183,763	-5.27%	74%
Rohnert Park	\$5,948,980	18.52%	\$3,059,423	14.84%	9,008,403	-145,409	-1.59%	17%
Sebastopol	\$902,626	2.81%	\$512,678	2.49%	1,415,304	-103,439	-6.81%	3%
Cotati	\$799,836	2.49%	\$770,549	3.74%	1,570,385	-31,186	-1.95%	3%
SPCSD	\$1,056,811	3.29%	\$422,754	2.05%	1,479,565	-44,357	-2.91%	3%
	\$32,121,923	100.00%	20,617,687	100.00%	52,739,610	-2,508,155	-4.54%	100%



Santa Rosa Water | Our Future in Every Drop

O&M Project Increases Of Note

- Operating Projects
 - Cost Reimbursement
 - Necessary Facility Upgrades
 - Regulatory
- Biosolids
 - New land application site leases and appurtenant costs
- Chemicals



Other Major O&M Line Item Increases

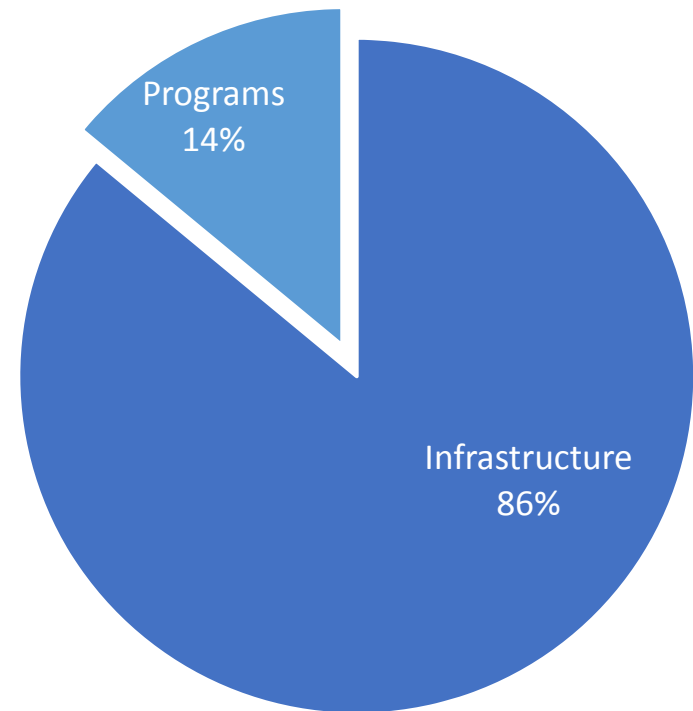
- Salaries
 - Environmental Compliance Officer
 - Subregional Operations Engineer
 - Overtime
 - Internal Reorganization, current vacancies
- Capital Items
 - 12" portable 5mgd pump



Total 2016-17 CIP Funding \$3,214,671

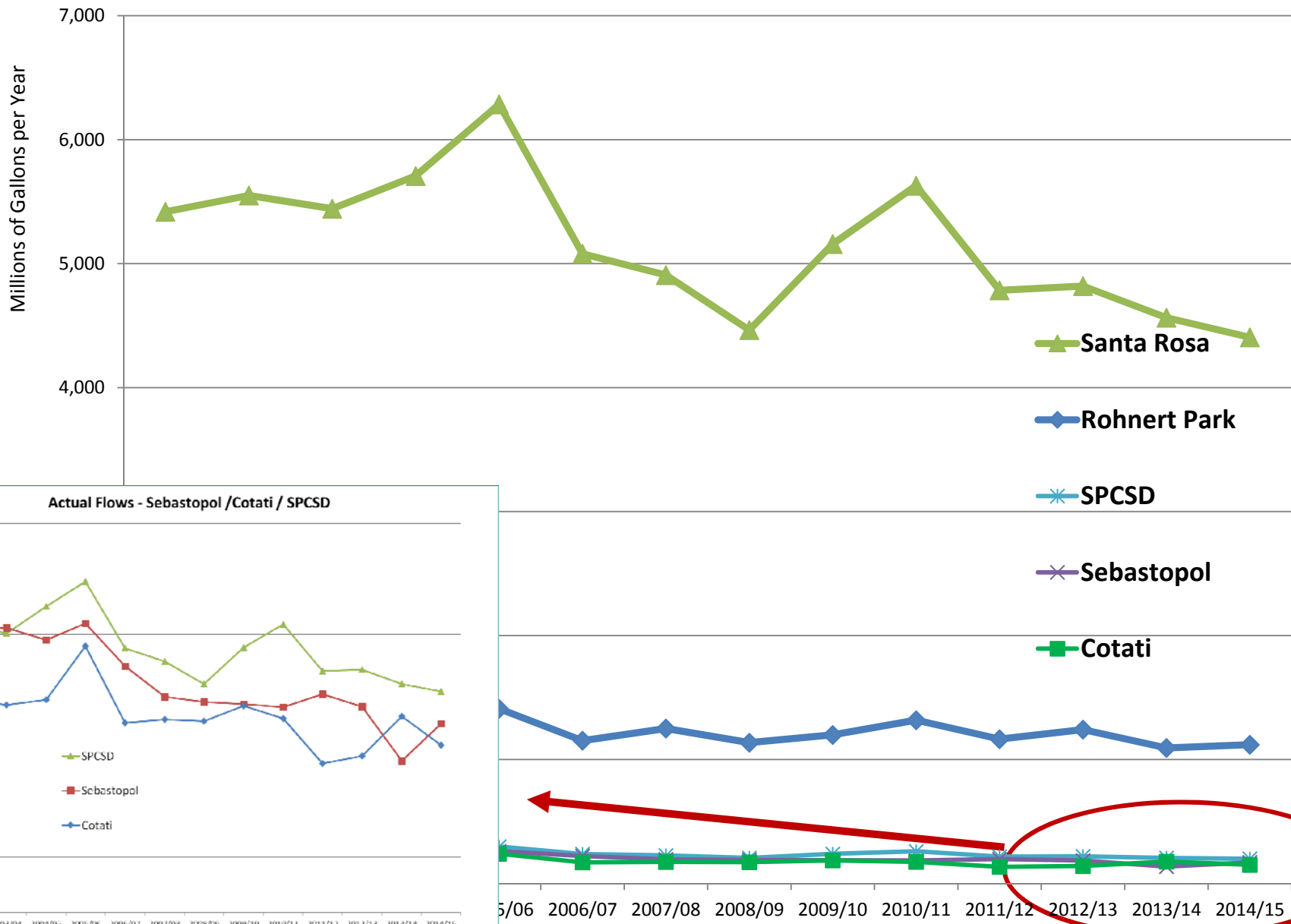
Infrastructure and Programs

- Infrastructure replacements and upgrades are \$2,764,671 or 86% of budget
- Programs such as Master Plans and Permit Compliance are \$450,000 or 14% of budget



OPERATING COSTS ARE DETERMINED BY FLOW

Actual Flows by User Agency



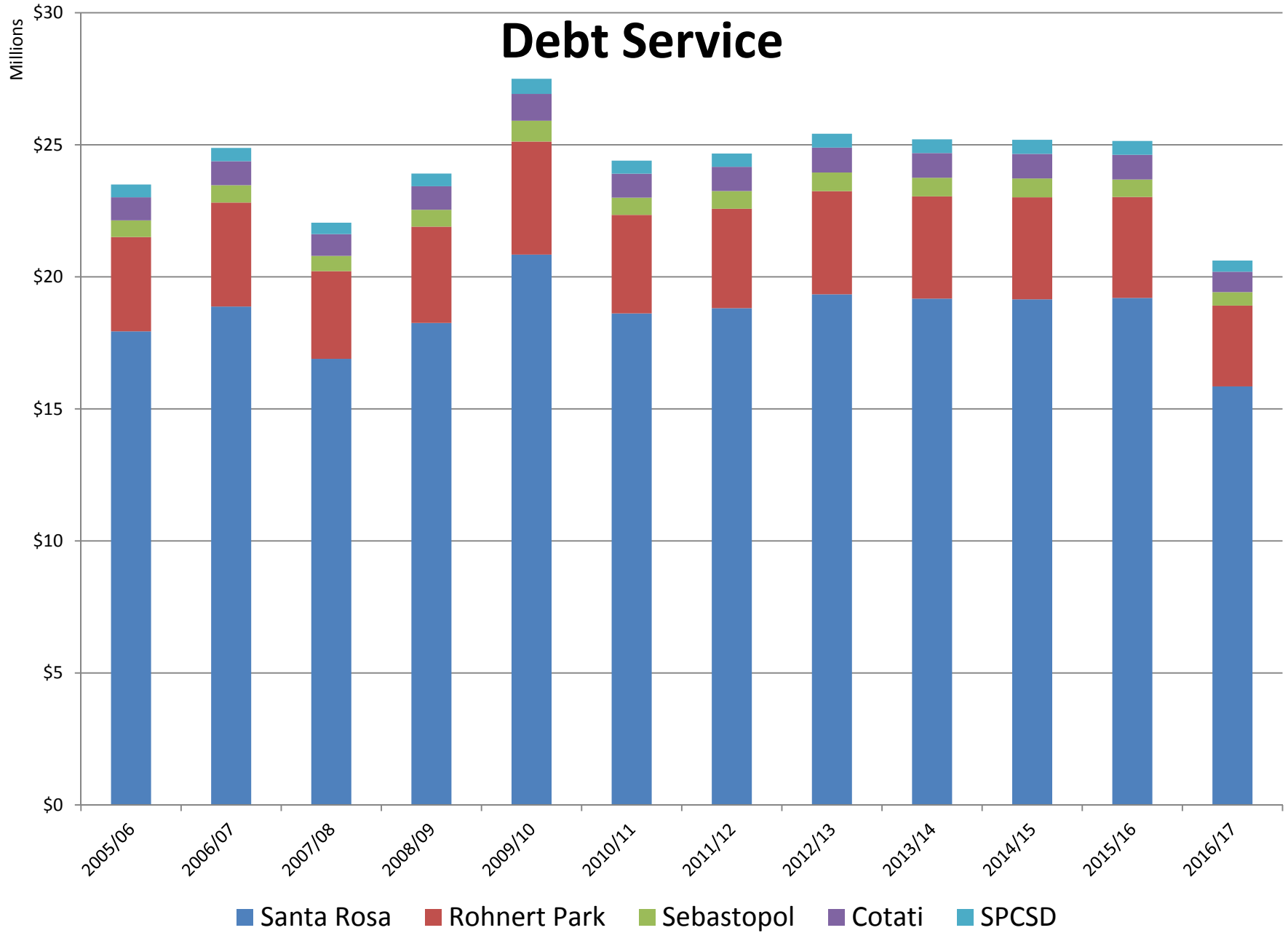
2016/17 Operating Allocation – Based on Flow

Entity	Operations			
	2015/16	2016/17		
Santa Rosa	\$22,246,005	\$23,413,670	5.2%	\$1,167,665
Rohnert Park	\$5,330,756	\$5,948,980	11.6%	\$618,224
Sebastopol	\$860,013	\$902,626	5.0%	\$42,613
Cotati	\$664,090	\$799,836	20.4%	\$135,746
SPCSD	\$1,002,374	\$1,056,811	5.4%	\$54,437
	\$30,103,238	\$32,121,923	6.7%	\$2,018,685



Santa Rosa Water | Our Future in Every Drop

Debt Service



2016/17 Debt Service Allocation – Based on Agreement

		Debt Service	%	\$
Entity	2015/16	2016/17	change	change
Santa Rosa	\$19,203,711	\$15,852,284	-17.5%	-\$3,351,428
Rohnert Park	\$3,823,056	\$3,059,423	-20.0%	-\$763,633
Sebastopol	\$658,730	\$512,678	-22.2%	-\$146,052
Cotati	\$937,481	\$770,549	-17.8%	-\$166,932
SPCSD	\$521,548	\$422,754	-18.9%	-\$98,794
	\$25,144,526	\$20,617,687	-18.0%	-\$4,526,840



Santa Rosa Water | Our Future in Every Drop

Total 2016/17 Allocation

2016/17

	O&M Contribution		Debt Service		Total	\$ Change from 2015/16	% Change from 2015/16	% from each Agency - total
Santa Rosa	\$23,413,670	72.89%	\$15,852,284	76.89%	39,265,954	-2,183,763	-5.27%	74%
Rohnert Park	\$5,948,980	18.52%	\$3,059,423	14.84%	9,008,403	-145,409	-1.59%	17%
Sebastopol	\$902,626	2.81%	\$512,678	2.49%	1,415,304	-103,439	-6.81%	3%
Cotati	\$799,836	2.49%	\$770,549	3.74%	1,570,385	-31,186	-1.95%	3%
SPCSD	\$1,056,811	3.29%	\$422,754	2.05%	1,479,565	-44,357	-2.91%	3%
	\$32,121,923	100.00%	20,617,687	100.00%	52,739,610	-2,508,155	-4.54%	100%



Santa Rosa Water | Our Future in Every Drop

DISCUSSION / QUESTIONS?



Santa Rosa Water | Our Future in Every Drop

CONNECT WITH US!

CALL: 707.543.4200

EMAIL: SRWATER@SRCITY.ORG

VISIT: SRCITY.ORG/WATER



Santa Rosa Water | Our Future in Every Drop