



Approval of an Agreement with Ragle Ranch Home Owner's Association for Red Curb Maintenance

City Council Meeting
February 27, 2017

Robert Sprinkle, Deputy Director - Traffic
Transportation and Public Works

BACKGROUND

- In June 2017, Ragle Ranch Home Owner's Association requested red curb on bulbouts and in front of gang mailboxes throughout their neighborhood.
- The City does not typically paint red curb at these locations because the vehicle code has provisions for blocking travel lanes and parking within intersections.
- Parking in front of the mailboxes often prevents the United States Postal Service from delivering mail, however, there is no law prohibiting parking there.
- Additionally, the ongoing maintenance of the red curb substantial.

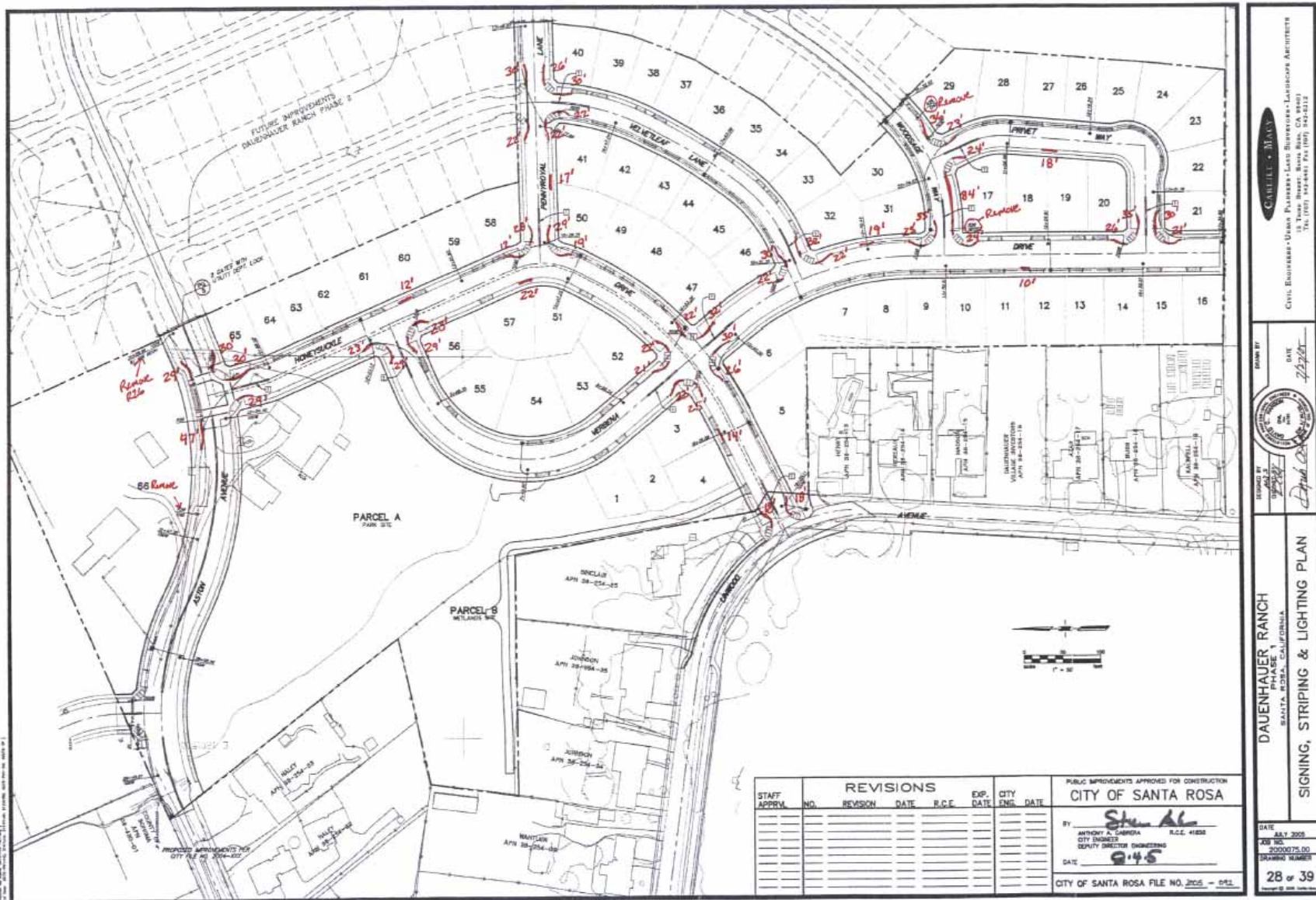
ANALYSIS

- With smaller lots, there is less frontage than in older subdivisions available for parking and residents desire to park in front of there homes
- Primary benefit of this agreement is cost savings for ongoing maintenance to the City of \$4,500 each repaint of approximately 2000 lineal feet.
- Ragle Ranch HOA supports the Agreement

RECOMMENDATION

- It is recommended by the Transportation and Public Works Department that Council, by resolution, approve an Agreement with Ragle Ranch Home Owner's Association for the Association to perform maintenance of red curb painting.

LOCATION MAP

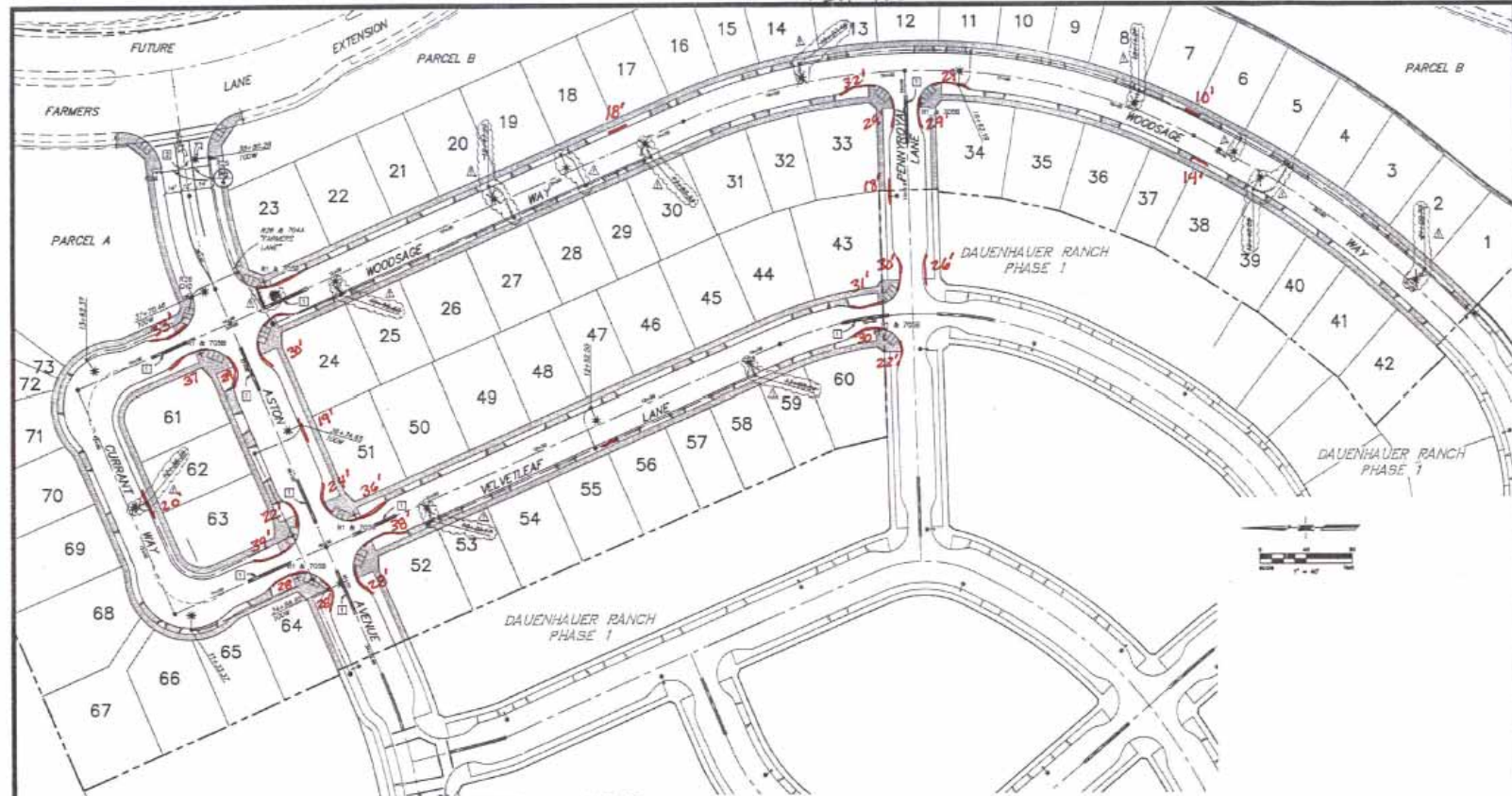


CABELL + MAAS
 Civil Engineers-Urban Planners-Land Surveyors-Landscape Architects
 1500 E. Highway 99, Suite 100, Ukiah, CA 95568
 Tel: (707) 834-4401 Fax: (707) 842-8112

DRAWN BY: [Signature] DATE: 7/22/05
 CHECKED BY: [Signature] DATE: 7/22/05
 APPROVED BY: [Signature] DATE: 7/22/05

DAUENHAUER RANCH
 SANTA ROSA, CALIFORNIA
SIGNING, STRIPING & LIGHTING PLAN

LOCATION MAP



SIGNING, & LIGHTING LEGEND

- ST STOP SIGN, STD. 307, EXCEPT AS NOTED
- R20 SPEED LIMIT 25 MPH (SIGNING)
- NO PARKING ANY TIME
- 7050 STREET NAME SIGN, STD. 7050 A & 7050 B
- 7054 ADVANCE STREET NAME SIGN, STD. 7054, 7054 B & 7054 C
- SIDEWALK BARRICADE, STD. 338
- Decorative Streetlight per STD. 8150 to W or AS SHOWN, FOOTING SIMILAR TO STD. 8024 AT CENTERLINE STATION WITH STAKE, NO. 9 PALL BOX
- P.S. & E SERVICE POINT
- STREET LIGHT CONDUIT AND CONDUCTOR, ALL CONDUCTORS TO BE COVERED, CONDUIT 2" MIN.
- PALL BOX, STREET LIGHT, STATE NO. 9 PALL BOX

STRIPING LEGEND

- 1 DOUBLE YELLOW CENTERLINE 30" PER STD. 7350, 47" LONG RESPONDING 9" BACK FROM CENTER OF PEDESTRIAN RAMP
- 2 4" WIDE WHITE EDGE LANE AND LETTERS LEGEND, TAPE OR PAINT ONLY, 4" HIGH PER CITY STD. 706

NOTES:

1. CONTRACTOR SHALL COMPLY WITH STANDARDS AND SPECIFICATIONS FOR CITY OF SANTA ROSA.
2. SIGNS SHALL BE INSTALLED ON STREET LIGHT STANDARDS WHENEVER POSSIBLE.
3. NO. 9 PALL BOX PER STD. 801.
4. THE FOLLOWING SIGNS SHALL BE HIGH INTENSITY SHEETING RT. 7054 & 7055 STREET SIGNS AND ALL NO PARKING/STOPPING SIGNS.
5. THE CONTRACTOR SHALL VERIFY THE STREET LIGHT SERVICE LOCATIONS WITH P.S. & E. PRIOR TO INSTALLATION.
6. ALL SIGNS, TYPE AND PLACEMENT, SHALL CONFORM TO CITY TRAFFIC STANDARD NOTES AND DRAWINGS, 700 SERIES.
7. STREET LIGHTS MOUNTED ALONG MINOR STREETS, EXCEPT AT THE TERMINUS OF A CUL-DE-SAC SHALL BE L.E.S. TYPE IV ILLUMINATION PATTERN.
8. STREET LIGHTS MOUNTED AT THE TERMINUS OF A CUL-DE-SAC SHALL BE L.E.S. TYPE IV ILLUMINATION PATTERN.
9. ALL WIRING AND EQUIPMENT CONSTRUCTION SHALL CONFORM TO THE NATIONAL ELECTRIC CODE (N.E.C.) AND SECTION 916 OF THE CALIFORNIA STANDARD SPECIFICATIONS.
10. SEAL ALL GAPS BETWEEN BASE COVER AND CONCRETE BASE WITH GROUT.

REVISIONS					
STAFF	NO.	REVISION	DATE	R.C.E.	EXP. DATE
APPROV.					

PUBLIC IMPROVEMENTS APPROVED FOR CONSTRUCTION
CITY OF SANTA ROSA
 BY: *Stevie*
 CITY ENGINEER
 DEPUTY DIRECTOR, ENGINEERING
 DATE: 5-2-6
 R.E.E. 4858

CALIFORNIA - SANTA ROSA

CIVIL ENGINEER - Urban Planning - Land Development - Landscape Architects
 15 Tenth Street, Santa Rosa, CA 95401
 (707) 539-2222, (707) 539-2223

DRAWN BY: [Signature]
 CHECKED BY: [Signature]
 DATE: 5/2/06

DAUENHAUSER RANCH PHASE 1
 SANTA ROSA, CALIFORNIA

SIGNING, STRIPING & LIGHTING PLAN

DATE: 5/2/06
 JOB NO.: 2000075.00
 DRAWING NUMBER: 16 of 25