

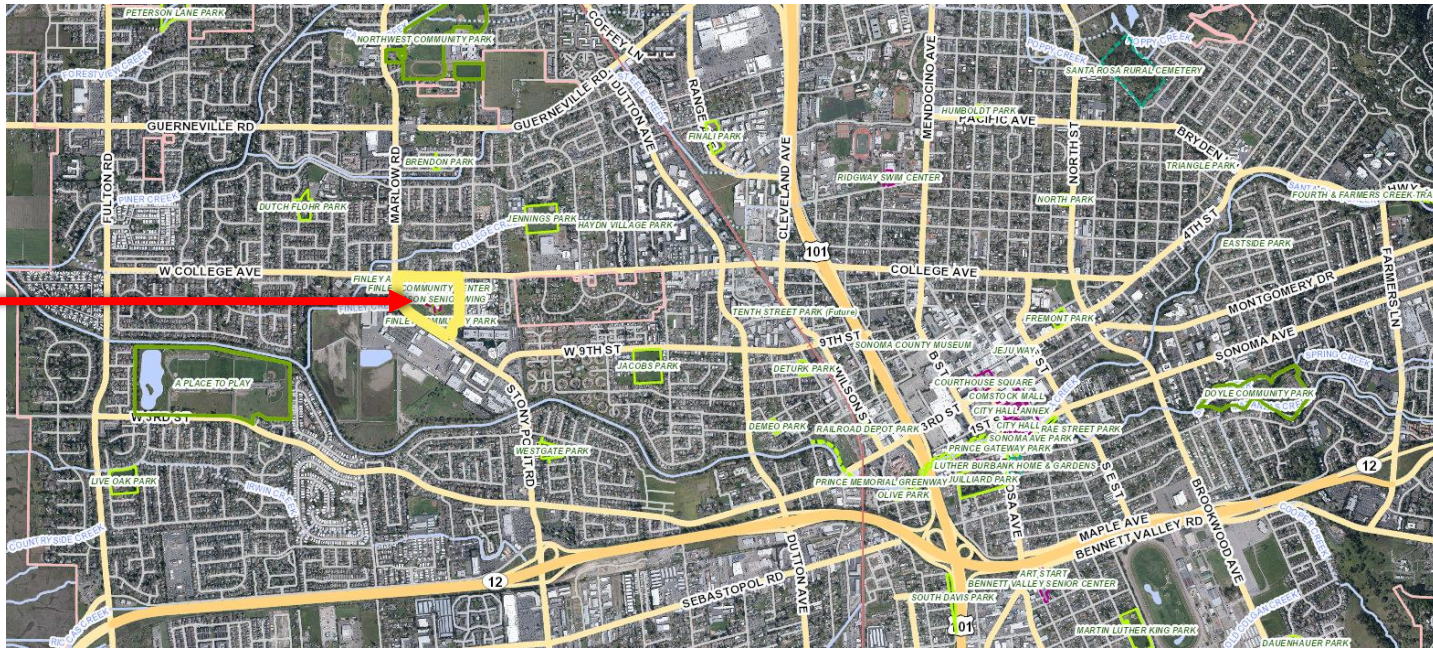


Professional Services Agreement
with David L. Gates & Associates, Inc., to
provide landscape architectural design
and engineering services to prepare
construction documents for Finley
Community Park Aquatic Spray Ground,
picnic area and landscaping

City Council Meeting
February 23, 2021

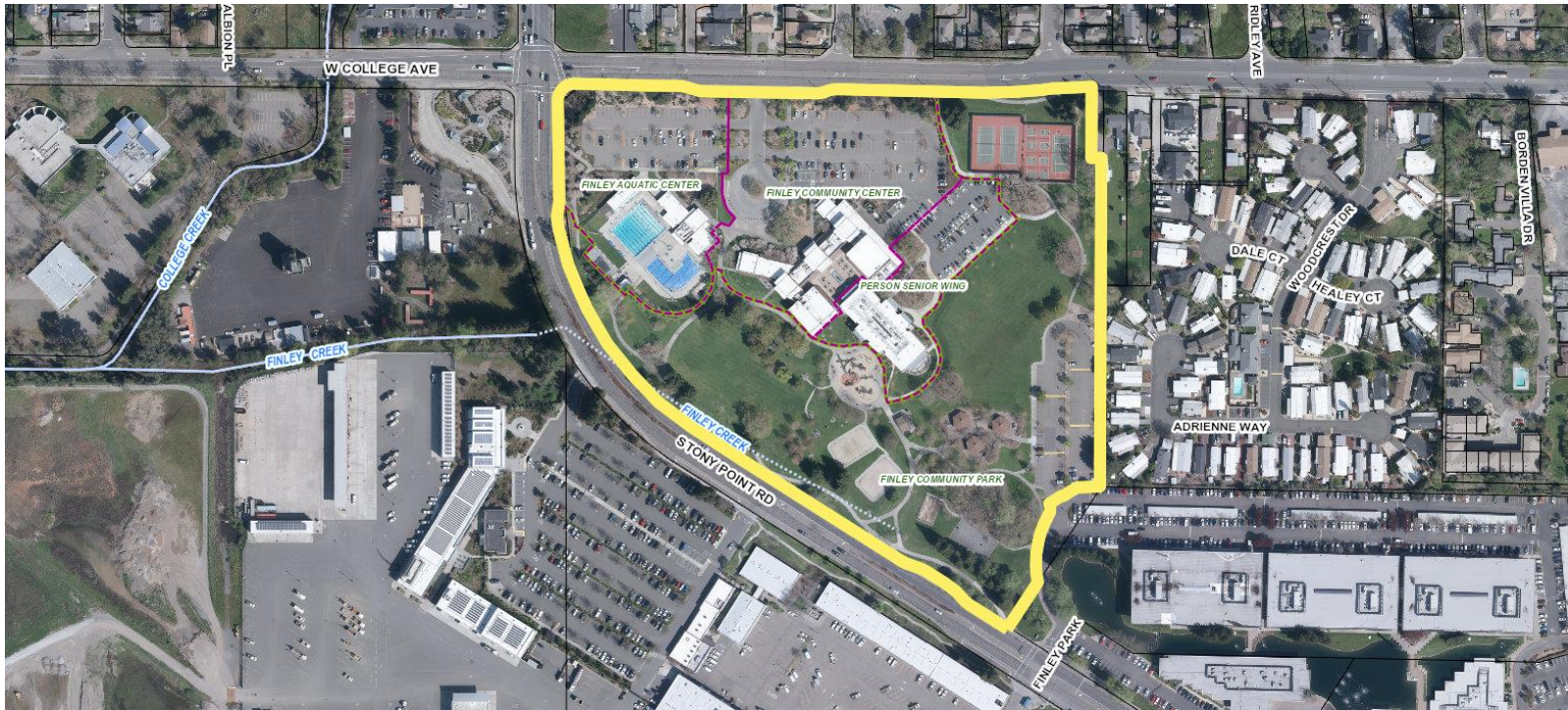
Tim Bernard, Park Planner Assistant
Jen Santos, Deputy Director - Parks
Transportation & Public Works Department

VICINITY MAP



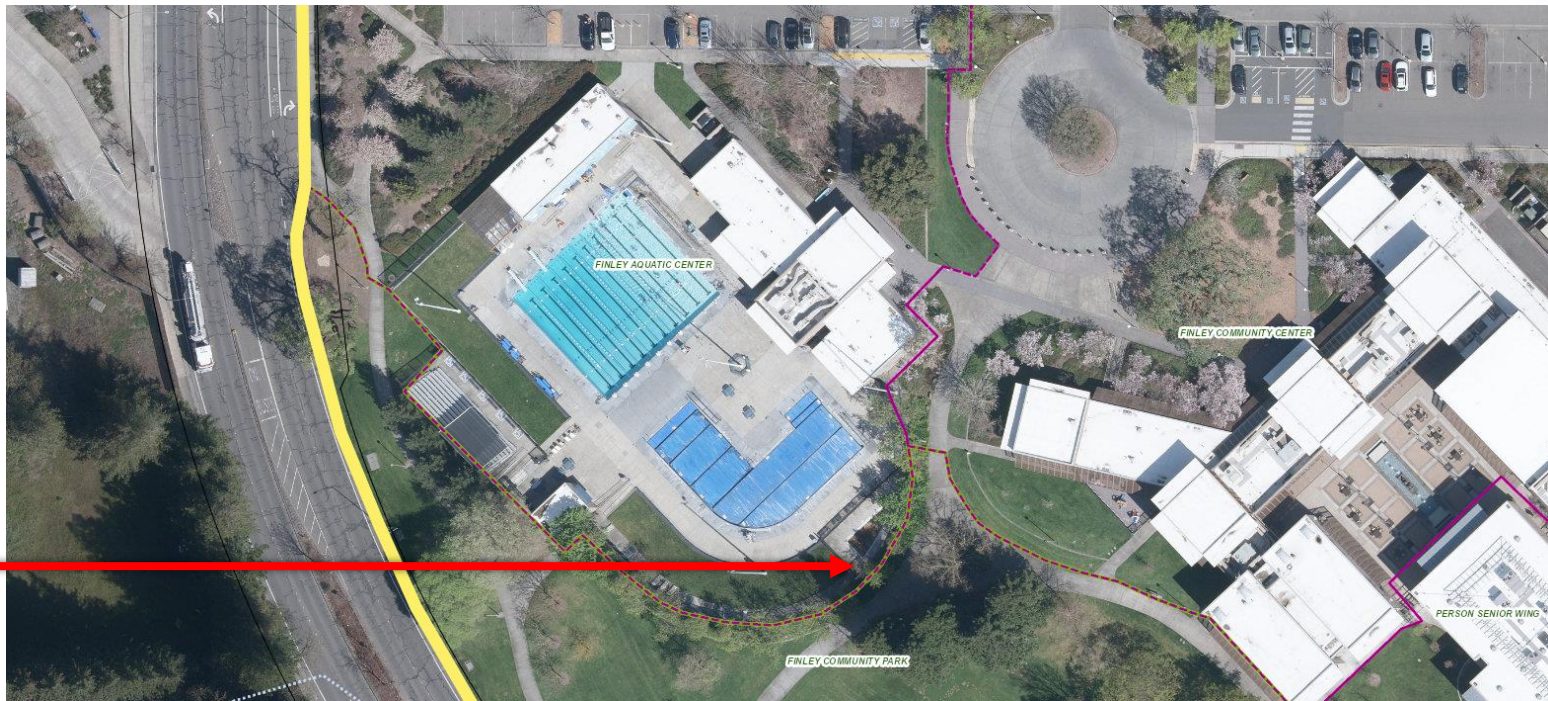
 = Finley Community Park

PARK BOUNDARY MAP



 = Finley Community Park

AQUATIC CENTER



Finley Aquatic Center – Project Site

BACKGROUND

- Finley Community Park is located in northwest Santa Rosa
- Aquatic Center, Community Center & Park were built in the 1990's and encompasses 12.2-acres
- Aquatic Center contains a large training swimming pool, smaller recreational pool and wading pool
- Wading pool is not used

PROCESS

- RFP released March 2020
- Three proposals received
- Review Committee with six City staff from Transportation and Public Works Department
- Review Committee recommends David L. Gates & Associates, Inc., a California Corporation of San Ramon, with the highest ranked proposal

BENEFIT & FUNDING

- Provide an aquatic spray ground, mechanical building, picnic area and landscaping at the Finley Aquatic Center
- Bring the pool deck and route of travel to current ADA standards
- Funding provided by (FY) 2019-20 budget appropriation from Park Development Impact Fees Fund 09632 – Finley Aquatic Center Water Feature in the amount of \$423,899

RECOMMENDATION

It is recommended by the Transportation and Public Works Department that the Council, by resolution, approve the Professional Services Agreement between the City of Santa Rosa and David L. Gates & Associates, Inc., a California Corporation of San Ramon, California, to provide landscape architectural design and engineering services to prepare construction documents for Finley Community Park Aquatic Spray Ground, picnic area and landscaping in an amount not to exceed \$423,899.

QUESTIONS ?