
562 & 648 Russell Avenue Public Service Easement Summary Vacation

City Council Meeting
October 23, 2018

Amy Nicholson
City Planner
Planning and Economic Development

- County of Sonoma seeks Council approval of a summary vacation of a 15-foot wide, Sanitary Sewer Easement and a 25-foot wide, Public Utility Easement
- Vacation will facilitate construction of a Behavioral Health Unit to support the existing Main Adult Detention Facility

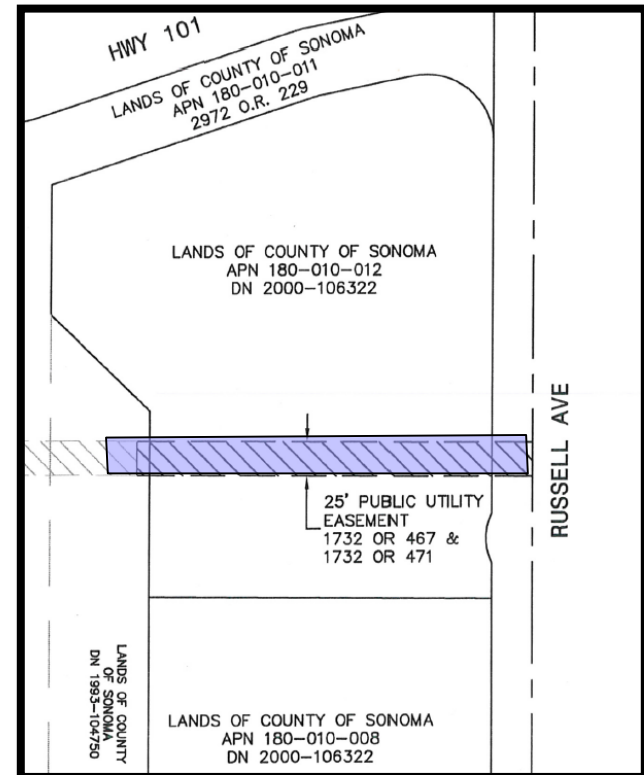
Project Location/Neighborhood Context



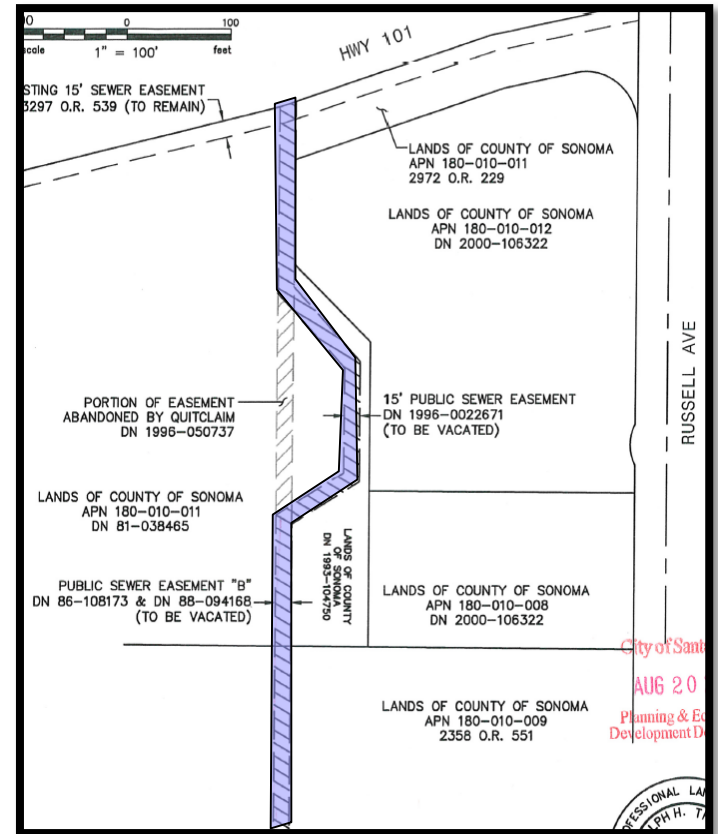
Project Location



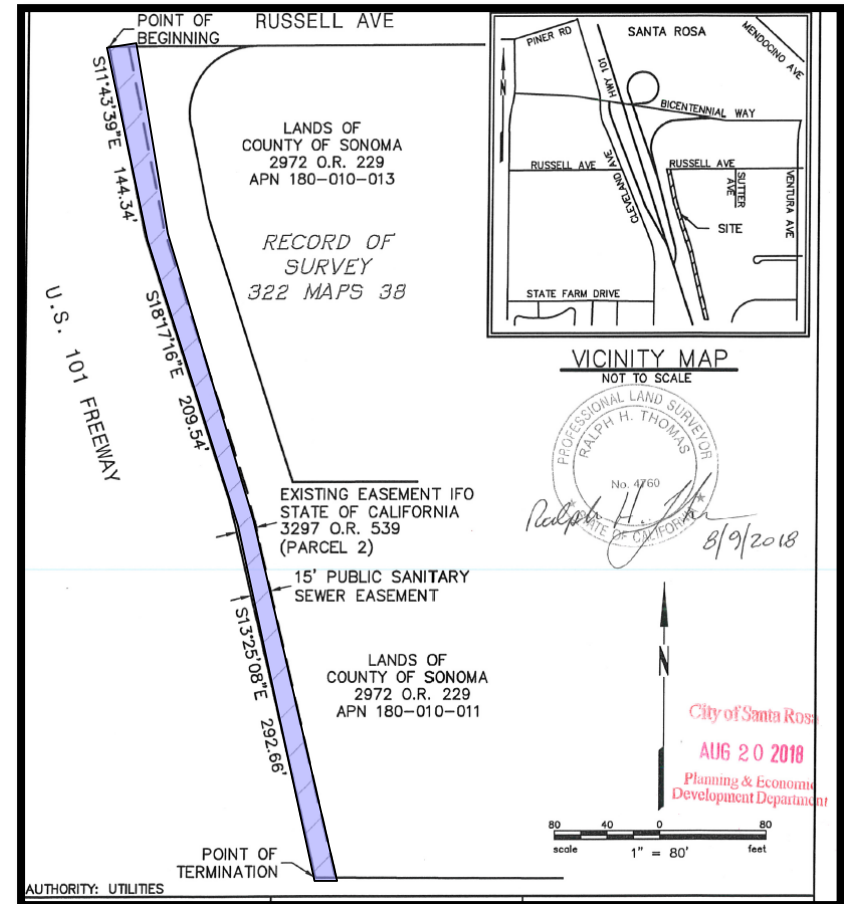
- Request for a summary vacation of an approximately 7,000 square-foot, 25-foot wide, Public Utility Easement located at 562 Russell Avenue and 648 Russell Avenue



- Request for a summary vacation of an approximately 11,100-square-foot, 15-foot wide, Sanitary Sewer Easement located at 562 Russell Avenue



- Upon application by County to vacate existing Easements it was discovered that the City did not have the required easement for the existing trunkline
- City is requiring County to grant this required easement



- Project consistent with requirements of the California Streets and Highways Code Section 8333
- The Easements requested to be vacated are no longer necessary for public purposes (excess) and there are no other public facilities located within the easements

- This action is categorically exempt from the California Environmental Quality Act (CEQA) pursuant to CEQA Guidelines section 15305, minor alterations in land use limitations.

- The Planning and Economic Development Department and the Water Department recommend that the Council, by resolution, approve a summary vacation of a 15-foot wide Sanitary Sewer Easement and a 25-foot wide Public Utility Easement, located on the properties of 562 and 648 Russell Avenue, respectively.

Amy Nicholson

City Planner

Planning and Economic Development Department

ANicholson@srcity.org

(707) 543-3258