

**LEGAL DESCRIPTION**  
Vacation of Public Utility Easement

Lying within the City of Santa Rosa, County of Sonoma, State of California and being a portion of the Easement Deed recorded in Book 3018 at Page 523, Official Records of Sonoma County, said portion being more particularly described as follows:

All that portion of said easement that lies within the lands of the City of Santa Rosa, as described by Grant Deed recorded under Document Number 2022-024490, Official Records of Sonoma County.

Said portion containing 1,086 square feet, more or less.

**END OF DESCRIPTION**

Basis of Bearings: North 85°39'04" West between City of Santa Rosa Horizontal Control Network Monuments G-475 and G-467. NAD83 – Zone II – Epoch 2010.00

R-Sheet No.: R-5804

Being a Portion of APN: 173-670-035

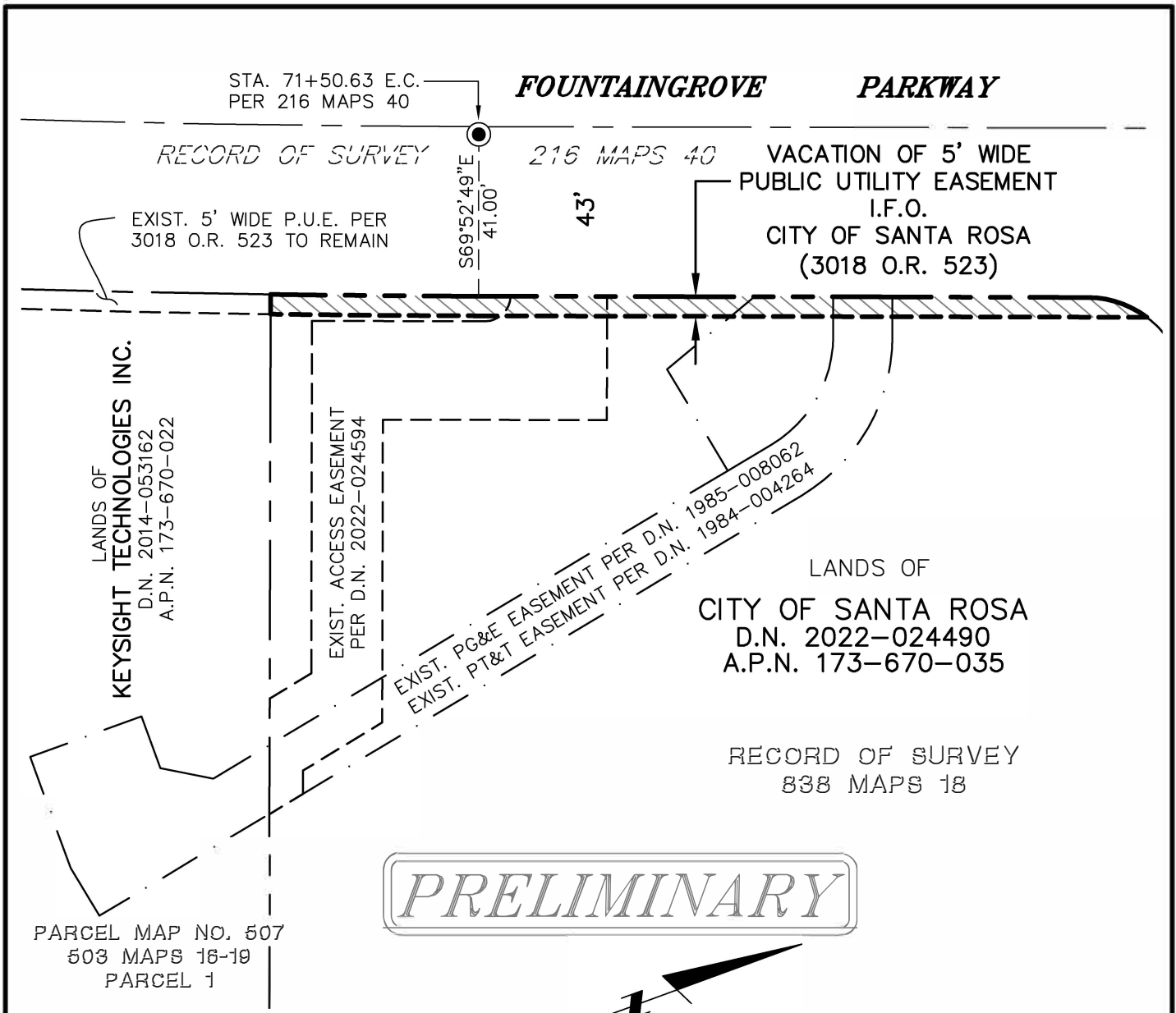
Prepared by City of Santa Rosa

**PRELIMINARY**

\_\_\_\_\_  
Walter C. Olawski, PLS 9450



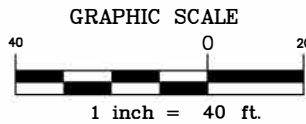
\_\_\_\_\_  
Date



**LEGEND**

- A.P.N. = ASSESSOR'S PARCEL NUMBER
- D.N. = DOCUMENT NUMBER
- I.F.O. = IN FAVOR OF
- O.R. = OFFICIAL RECORDS
- P.U.E. = PUBLIC UTILITY EASEMENT

⊙ = FOUND 2" BRASS DISK IN A STANDARD CITY MONUMENT WELL STAMPED "CITY OF SANTA ROSA"



BASIS OF BEARINGS: NORTH 85°39'04" WEST BETWEEN CITY OF SANTA ROSA COORDINATE MONUMENTS G-475 & G-467. NAD83 - ZONE II - EPOCH 2010.00.

<b>OWNER AND MAILING ADDRESS</b>	<b>PROPERTY AREAS</b>	<b>CITY OF SANTA ROSA</b>		
CITY OF SANTA ROSA 100 SANTA ROSA AVE SANTA ROSA, CA 95404	ORIGINAL PARCEL: <u>2.11 AC.±</u>  VACATED P.U.E.: <u>1,086 S.F.±</u>	VACATION OF PUBLIC UTILITY EASEMENT IN FAVOR OF THE CITY OF SANTA ROSA		
A.P. No. <u>173-670-035</u>	CITY VACATION DEED	SCALE: 1" = 40'		DATE: 2/23/2023
DOC. No. <u>2022-024490</u>		DWN. WCO CHK. BAPT	APPROVED	FILE NO. R-5804
	D.N. _____			