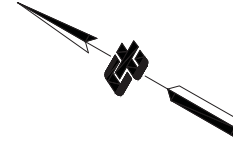


EXHIBIT A

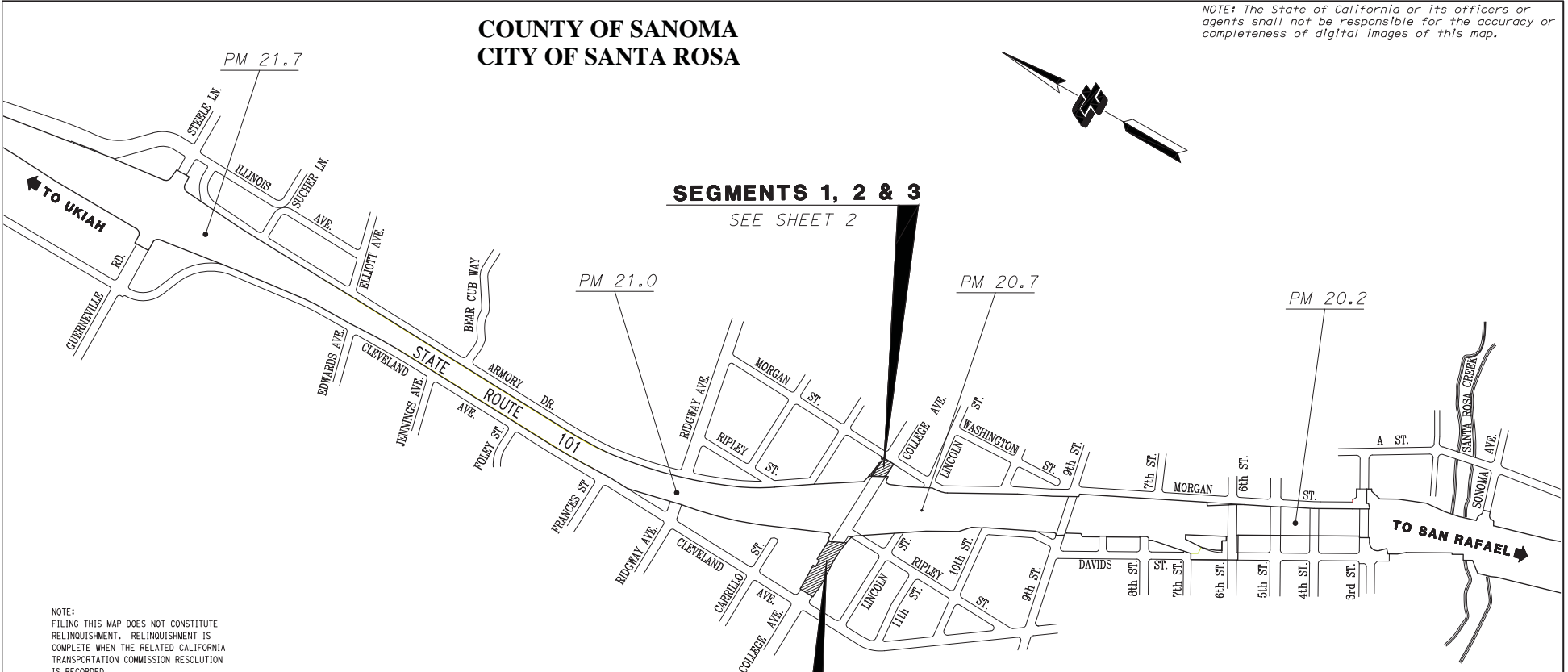
COUNTY OF SANOMA CITY OF SANTA ROSA

NOTE: The State of California or its officers or agents shall not be responsible for the accuracy or completeness of digital images of this map.



SEGMENTS 1, 2 & 3 SEE SHEET 2

SEGMENT 4 SEE SHEET 3



NOTE:
FILING THIS MAP DOES NOT CONSTITUTE
RELINQUISHMENT. RELINQUISHMENT IS
COMPLETE WHEN THE RELATED CALIFORNIA
TRANSPORTATION COMMISSION RESOLUTION
IS RECORDED.

FILED IN THE OFFICE OF THE RECORDER
OF THE COUNTY OF SONOMA.
DATE: _____
STATE HIGHWAY MAP BOOK PAGE
SERIAL NO. _____



PROFESSIONAL LAND SURVEYOR
DATE _____

NOTE: The State's rights are not extinguished until recordation
of related California Transportation Commission resolution.

STATE OF CALIFORNIA
CALIFORNIA STATE TRANSPORTATION AGENCY
DEPARTMENT OF TRANSPORTATION
**RIGHT OF WAY
RELINQUISHMENT**
REL. NO. 56104
TO THE CITY OF SANTA ROSA
FOR PREVIOUS R/W INFORMATION SEE
MAP(S) A-10259.5, R-48.18 & R-10259.5

LEGEND

Portion to be relinquished

DATE: 12/2015	EA(s): 245442	CONTRACT NO.: 245444			
DRAWN BY: A. ZHONG	CHECKED BY: #####				
DISTRICT	COUNTY	ROUTE	SHEET PM	SHEET NO.	TOTAL SHEETS
04	SON	101	20.8	1	3

M-1585

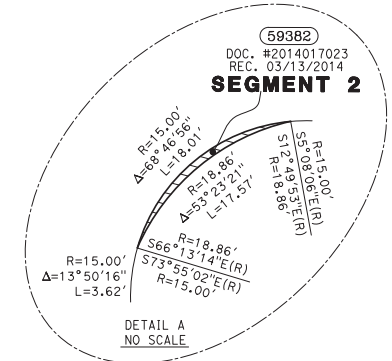
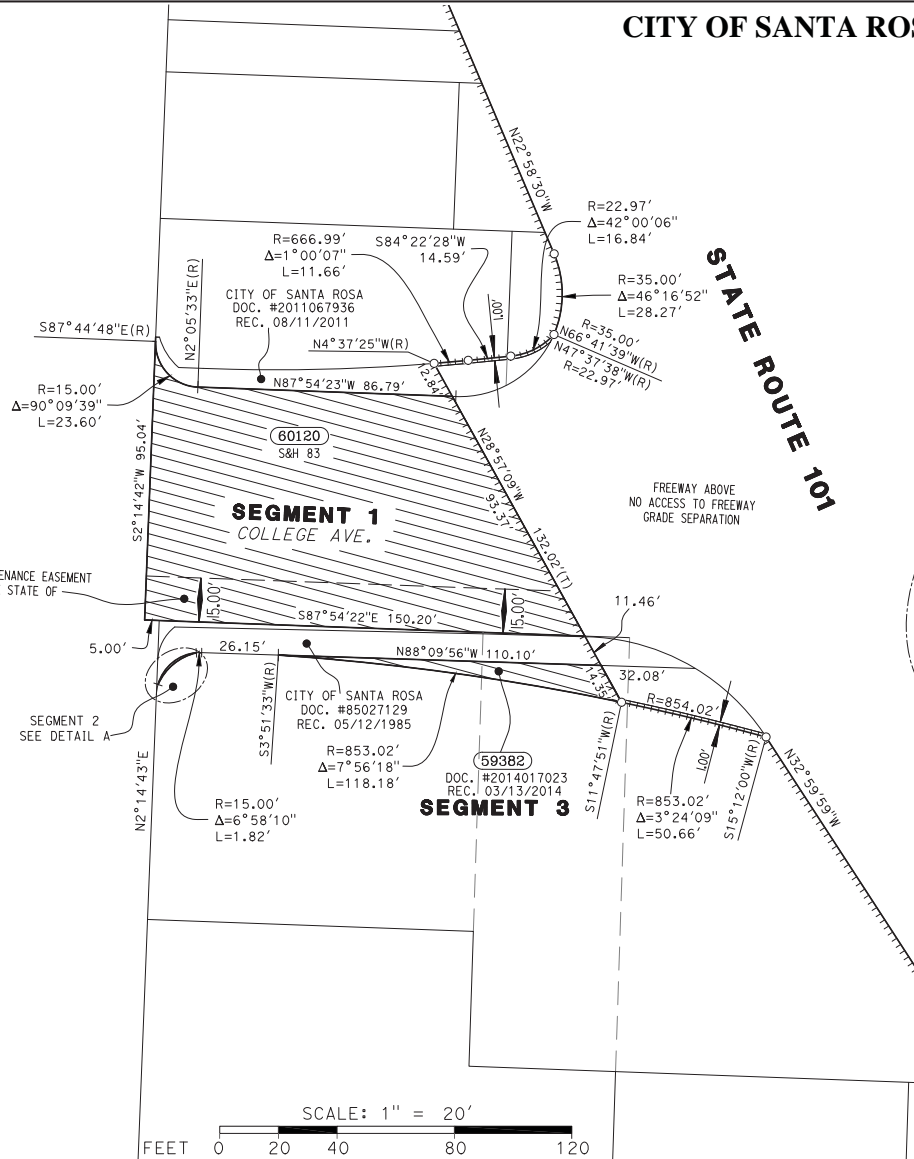
NO SCALE

PROJECT ID: 040000693

Coordinates and bearings are on CCS 1983, Zone 2, Epoch 1991.35. Distances and stationing are grid distances. Multiply by 1.0000254 to obtain ground distances. All distances are in feet unless otherwise noted.

CITY OF SANTA ROSA

NOTE: The State of California or its officers or agents shall not be responsible for the accuracy or completeness of digital images of this map.



NOTE: The State's rights are not extinguished until recordation of related California Transportation Commission resolution.

STATE OF CALIFORNIA
CALIFORNIA STATE TRANSPORTATION AGENCY
DEPARTMENT OF TRANSPORTATION
**RIGHT OF WAY
RELINQUISHMENT**
REL. NO. 56104
TO THE CITY OF SANTA ROSA
FOR PREVIOUS R/W INFORMATION SEE
MAP(S) A-10259.5, R-48.18 & R-10259.5

DATE: 12/2015	EA(s): 245442	CONTRACT NO.: 245444
DRAWN BY: A. ZHONG	CHECKED BY: #####	
DISTRICT	COUNTY	ROUTE
04	SON	101
		20.8
		2
		3

PROJECT ID: 040000693

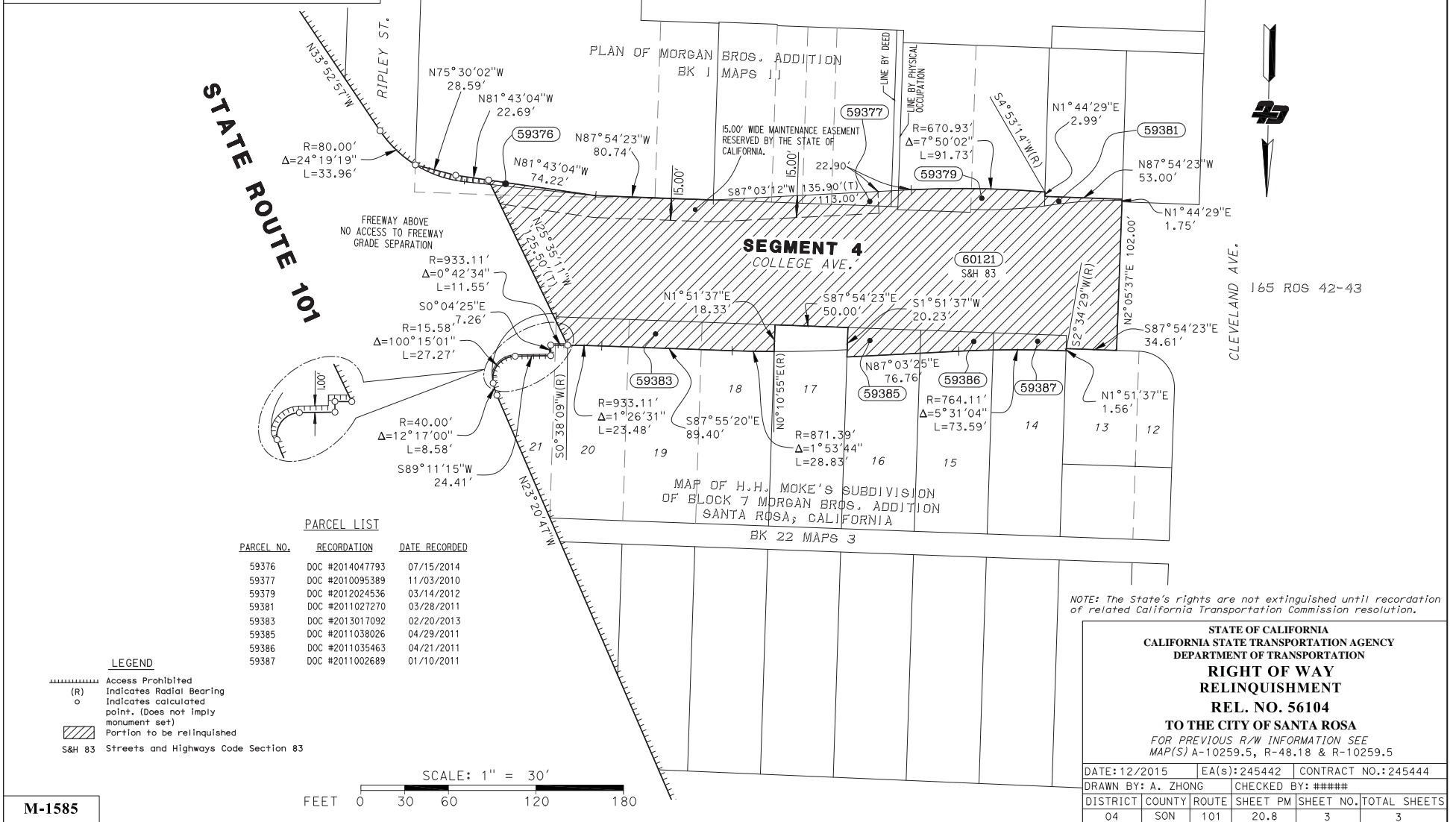
M-1585

- LEGEND**
- Access Prohibited
 - Indicates Radial Bearing
 - Indicates calculated point. (Does not imply monument set)
 - Portion to be relinquished
 - S&H 83 Streets and Highways Code Section 83

Coordinates and bearings are on CCS 1983, Zone 2, Epoch 1991.35. Distances and stationing are grid distances. Multiply by 1.0000254 to obtain ground distances. All distances are in feet unless otherwise noted.

CITY OF SANTA ROSA

NOTE: The State of California or its officers or agents shall not be responsible for the accuracy or completeness of digital images of this map.



PARCEL LIST

PARCEL NO.	RECORDATION	DATE RECORDED
59376	DOC #2014047793	07/15/2014
59377	DOC #2010095389	11/03/2010
59379	DOC #2012024536	03/14/2012
59381	DOC #2011027270	03/28/2011
59383	DOC #2013017092	02/20/2013
59385	DOC #2011038026	04/29/2011
59386	DOC #2011035463	04/21/2011
59387	DOC #2011002689	01/10/2011

LEGEND

- Access Prohibited
- Indicates Radial Bearing
- Indicates calculated point. (Does not imply monument set)
- Portion to be relinquished
- S&H 83 Streets and Highways Code Section 83

SCALE: 1" = 30'

FEET 0 30 60 120 180

NOTE: The State's rights are not extinguished until recordation of related California Transportation Commission resolution.

**STATE OF CALIFORNIA
CALIFORNIA STATE TRANSPORTATION AGENCY
DEPARTMENT OF TRANSPORTATION
RIGHT OF WAY
RELINQUISHMENT**

**REL. NO. 56104
TO THE CITY OF SANTA ROSA**

FOR PREVIOUS R/W INFORMATION SEE
MAP(S) A-10259.5, R-48.18 & R-10259.5

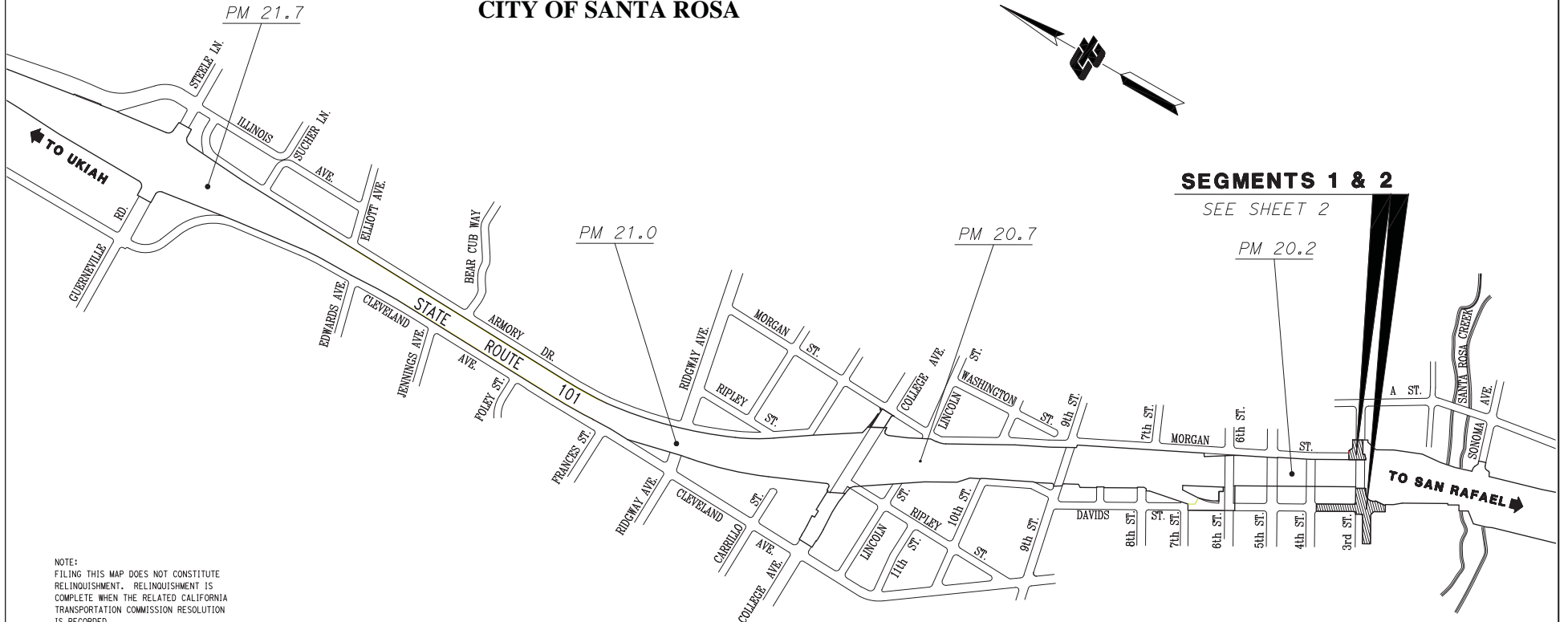
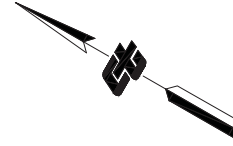
DATE: 12/2015	EA(s): 245442	CONTRACT NO.: 245444
DRAWN BY: A. ZHONG	CHECKED BY: #####	
DISTRICT: 04	COUNTY: SON	ROUTE: 101
SHEET: 20.8	SHEET PM: 3	TOTAL SHEETS: 3

M-1585

PROJECT ID: 040000693

**COUNTY OF SANOMA
CITY OF SANTA ROSA**

NOTE: The State of California or its officers or agents shall not be responsible for the accuracy or completeness of digital images of this map.



SEGMENTS 1 & 2

SEE SHEET 2

NOTE:
FILING THIS MAP DOES NOT CONSTITUTE
RELINQUISHMENT. RELINQUISHMENT IS
COMPLETE WHEN THE RELATED CALIFORNIA
TRANSPORTATION COMMISSION RESOLUTION
IS RECORDED.

FILED IN THE OFFICE OF THE RECORDER
OF THE COUNTY OF SONOMA.
DATE: _____
STATE HIGHWAY MAP BOOK PAGE
SERIAL NO. _____



PROFESSIONAL LAND SURVEYOR

DATE

NOTE: The State's rights are not extinguished until recordation of related California Transportation Commission resolution.

STATE OF CALIFORNIA
CALIFORNIA STATE TRANSPORTATION AGENCY
DEPARTMENT OF TRANSPORTATION
**RIGHT OF WAY
RELINQUISHMENT**
REL. NO. 56128
TO THE CITY OF SANTA ROSA
FOR PREVIOUS R/W INFORMATION SEE
MAP(S) A-10259.2, R-48.16 & R-10259.2

LEGEND

Portion to be relinquished

M-1605

NO SCALE

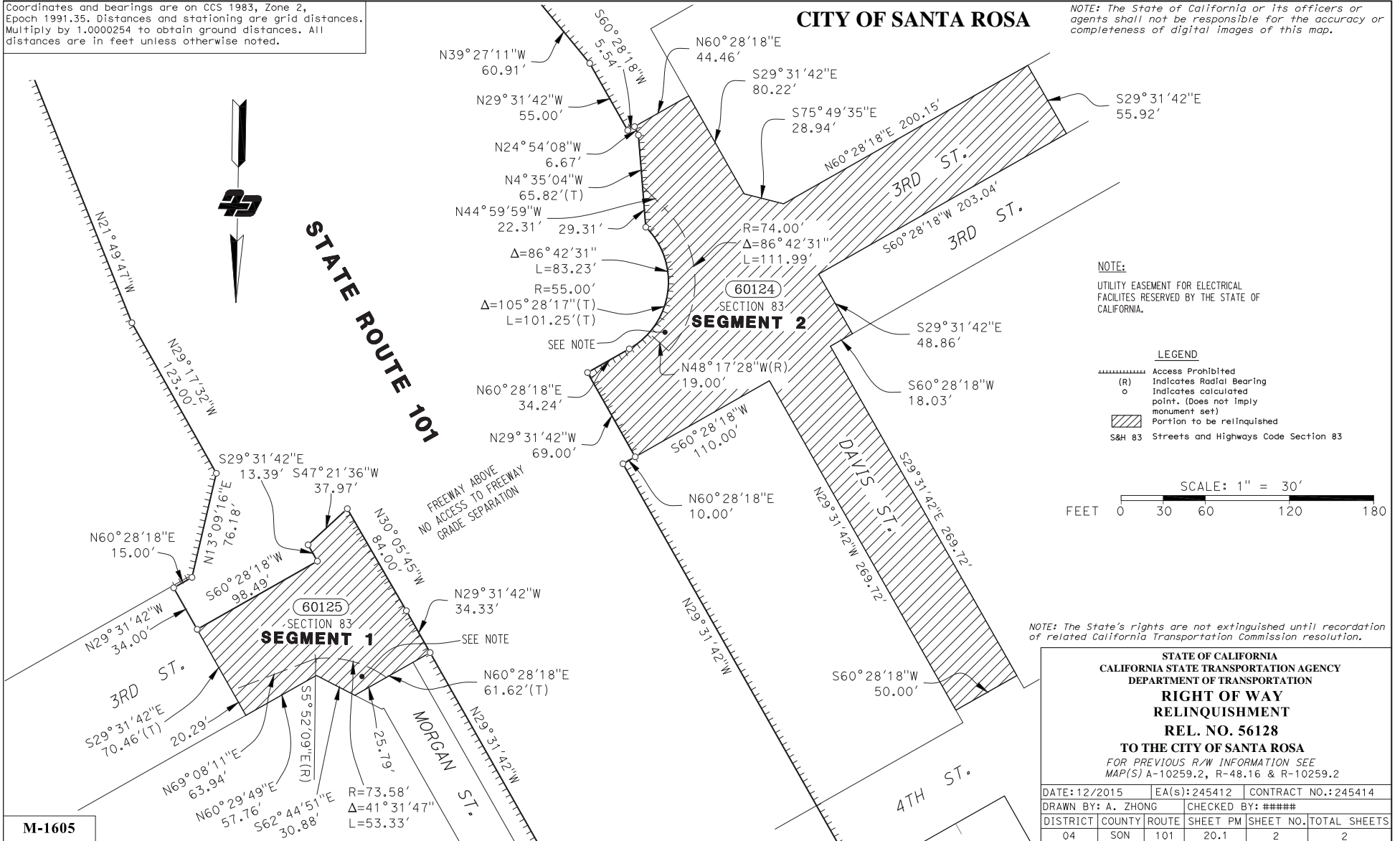
DATE: 12/2015	EA(s): 245412	CONTRACT NO.: 245414			
DRAWN BY: A. ZHONG	CHECKED BY: #####				
DISTRICT	COUNTY	ROUTE	SHEET PM	SHEET NO.	TOTAL SHEETS
04	SON	101	20.1	1	2

PROJECT ID: 040000691

Coordinates and bearings are on CCS 1983, Zone 2, Epoch 1991.35. Distances and stationing are grid distances. Multiply by 1.0000254 to obtain ground distances. All distances are in feet unless otherwise noted.

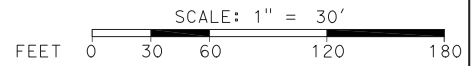
CITY OF SANTA ROSA

NOTE: The State of California or its officers or agents shall not be responsible for the accuracy or completeness of digital images of this map.



NOTE:
UTILITY EASEMENT FOR ELECTRICAL FACILITIES RESERVED BY THE STATE OF CALIFORNIA.

- LEGEND**
- Access Prohibited
 - (R) Indicates Radial Bearing
 - o Indicates calculated point. (Does not imply monument set)
 - ▨ Portion to be relinquished
 - S&H 83 Streets and Highways Code Section 83



NOTE: The State's rights are not extinguished until recordation of related California Transportation Commission resolution.

STATE OF CALIFORNIA CALIFORNIA STATE TRANSPORTATION AGENCY DEPARTMENT OF TRANSPORTATION RIGHT OF WAY RELINQUISHMENT REL. NO. 56128 TO THE CITY OF SANTA ROSA FOR PREVIOUS R/W INFORMATION SEE MAP(S) A-10259.2, R-48.16 & R-10259.2					
DATE: 12/2015	EA(s): 245412	CONTRACT NO.: 245414			
DRAWN BY: A. ZHONG	CHECKED BY: #####				
DISTRICT: 04	COUNTY: SON	ROUTE: 101	SHEET PM: 20.1	SHEET NO.: 2	TOTAL SHEETS: 2

M-1605

PROJECT ID: 040000691