

Re-certification of the Sewer System Management Plan (SSMP)



Santa Rosa Water | Our Future in Every Drop!

CITY OF SANTA ROSA WATER SEWER SYSTEM MANAGEMENT PLAN (SSMP)



Protecting public health by sustaining water resources, infrastructure and the environment.

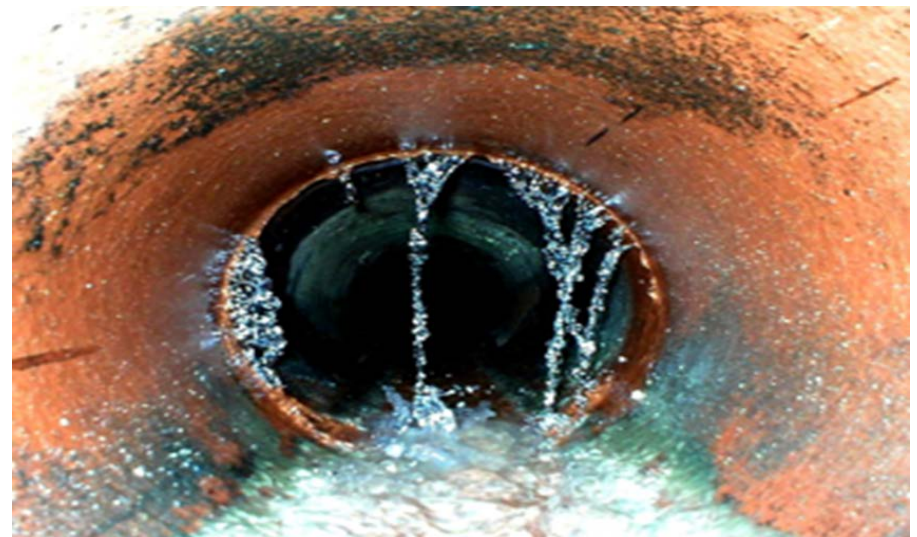
Certified (TBD)
(Revised March 2019)

BPU Meeting
April 18, 2019

Joe Schiavone
Deputy Director Water Operations

Why have an SSMP?

- 2006-0003 General Waste Discharge Order (WDR)
- WDR requires SSMP for each agency



Goals of the SSMP

- Minimize the number and impact of Sanitary Sewer Overflows (SSOs)
- Maintain and improve the condition of the collection system infrastructure
- Minimize infiltration/inflow (I&I) and provide adequate sewer capacity to accommodate design storm flows



SSMP Biennial Audits

- Determine effectiveness
- Review data and trends
- Opportunities to improve compliance



- Updated staff contact information
- LRO Certification Page
- Change Log
- Refined and improved spill response and documentation
- List of abbreviations and terms



5

5-Year Re-Certification

- WDR requires to occur at a public meeting
- Required to include significant operational and program changes
- Due to State May 1st



Future Approval Authority

- Recommend approval authority for re-certifications be delegated to the Board of Public Utilities (BPU)
- Consistent with Section 25 of the Charter of the City of Santa Rosa
 - Grants BPU general policy authority and direction over management and operation of the City's water and sewer utilities
- Timelier processing of future re-certifications

Recommendation

It is recommended by the Water Department that the Board of Public Utilities, by resolution, recommend that the City Council approve re-certification of the Sewer System Management Plan (SSMP) as required by the State Water Resources Control Board Order No. 2006- 003 Statewide General Waste Discharge Requirements for Sanitary Sewer Systems and delegate authority to the Board of Public Utilities to approve future re-certifications of the SSMP.

Questions

