

# **Santa Rosa Plain Groundwater Sustainability Agency Aquifer Storage and Recovery Pilot Study**

Board of Public Utilities Meeting

May 15, 2025

Claire Nordlie – Senior Water Resources Planner

# Project Partners

- Santa Rosa Plain Groundwater Sustainability Agency (SRP GSA) – Grant recipient
- Department of Water Resources – Grantor for \$6.9M for Drought Resiliency Projects
- Sonoma Water – Project Manager
- Santa Rosa Water – Infrastructure at Martha Way Test Well



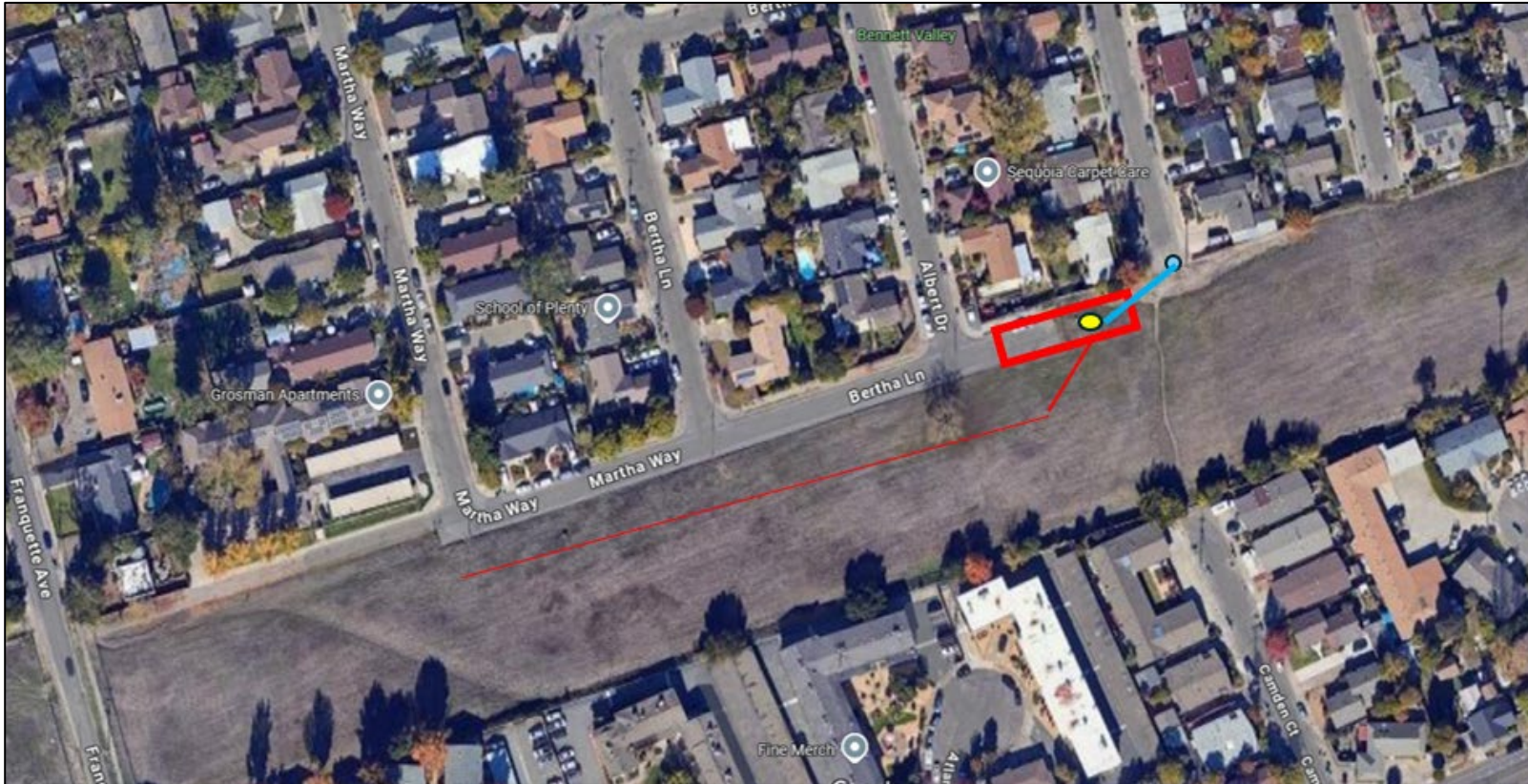
# Aquifer Storage and Recovery (ASR)

- ASR stores water underground during wet periods and recovers it for use during dry seasons or emergencies
- ASR can provide water supply reliability and support the stabilization or recovery in areas facing long-term groundwater level declines
- Several local pilot studies:
  - City of Petaluma, in-process
  - City of Sonoma, 2018
  - Sonoma Water, in-process
  - Valley of the Moon, 2022
  - Town of Windsor

# Project Goals

- Pursue pilot studies that are supportive of SRP GSA Groundwater Sustainability Plan (2021) Projects and Management Actions
- Test the feasibility of ASR in this portion of Santa Rosa
  - Water Supply Alternatives Plan goal
- Learn about the feasibility of options that may be necessary to achieve sustainable groundwater management in the region

# Martha Way Test Well



- Martha Way Test Well
- ▭ Construction Staging Area
- Pipe from potable supply to well
- Pipe from well to land discharge
- Potable water connection



# Project Details and Timeline

- Pilot test to occur – Summer 2025, over ~ 86 days
- Four cycles of discharge and recovery
  - Pre-test
  - Cycle 1, 2, 3
    - Recharge, storage and recovery
- Recharge – 2.6 million gallons over 24 days
- Storage – 48 days
- Recovery – 3 million gallons over 14 days

# Communication and Outreach

- Letters to surrounding neighborhood (English and Spanish)
- Signage at construction site
- Webpage on SRP GSA website
- Santa Rosa Southeast Greenway Campaign coordination
- Agriculture and Open Space notification
- City of Santa Rosa Recreation and Parks Department coordination

# Questions?