

# Santa Rosa Plain Groundwater Sustainability Agency Updates

March 17, 2022

**Board of Public Utilities**

Peter Martin, Deputy Director Water Resources



OUR FUTURE IN EVERY DRÖP



SANTA ROSA PLAIN  
**GROUNDWATER**  
SUSTAINABILITY AGENCY

# SANTA ROSA PLAIN Groundwater Sustainability Agency

## Santa Rosa Plain GSA



A large crowd of people is seen from behind, celebrating with their arms raised. The air is filled with a thick shower of multi-colored confetti (yellow, orange, red, green) and long, thin streamers. The scene is brightly lit, likely from stage lights, creating a festive and celebratory atmosphere.

# Groundwater Sustainability Plan Adoption and Submittal

- The Final GSP was unanimously adopted by Santa Rosa Plain GSA Board of Director's at their December 9, 2021 Board Meeting
- Submitted to the CA Department of Water Resources (DWR) on January 26, 2022
- DWR has two years to review/assess the plan for compliance with SGMA

GSP  
Implementation:  
SRP GSA Annual  
Report

- Annual report is for Water Year 2021:  
(Sept 2020 – Oct 2021)
- Purpose: report on monitoring data, conditions, and provide GSP implementation progress update
- Draft Report: No reportable/actionable exceedances of Minimum Thresholds for sustainable management criteria

# Six Sustainability Management Criteria

Chronic Lowering  
of Groundwater  
Levels



Reduction in  
Groundwater  
Storage



Seawater  
Intrusion



Degraded Water  
Quality



Land Subsidence

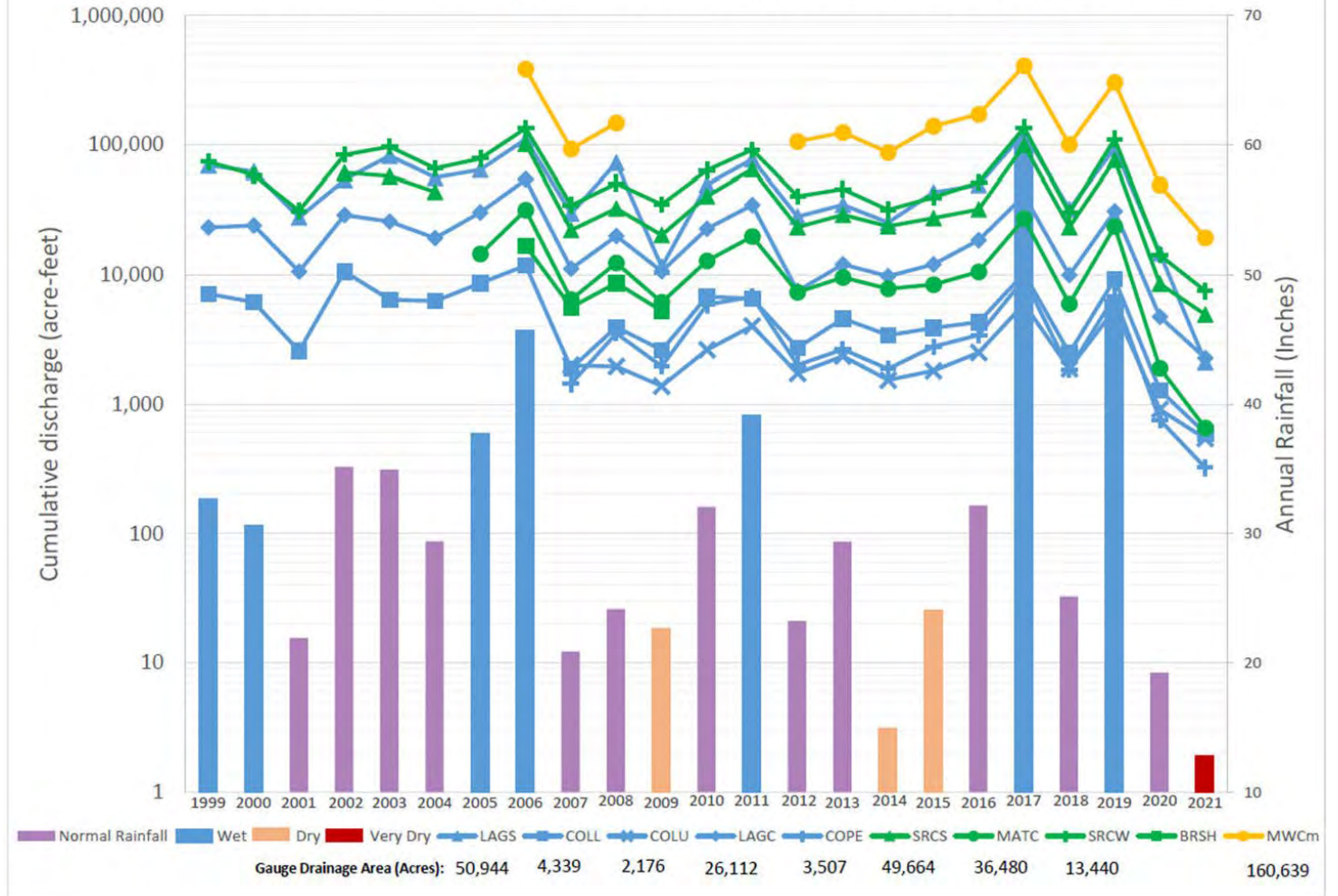


Depletion of  
Interconnected  
Surface Water



# 2021 WY: Very Dry/ Extreme Drought GSP Classification

Figure 3-1 - Total Annual Gauged Surface Water Flow (Water Years 1999 through 2022)



# Implementation Reporting & Planned WY 2022 Activities

- Finalize and Submit GSP – completed on January 29, 2022
- Preparation of Annual Report – due 4/1/22
- Completion of Prop 68 rural engagement project – March 2022
- Completion of Permit Sonoma Prop 68 Grant scope – Due June 2022
- Grant Solicitation for SGMA Implementation Grants – Sept 2022
- Completion of multi-level monitoring well project –October 2022
- Modeling Improvements (2022-2023)
- Studies/activities to address Data Gaps (2023)



**FEES**

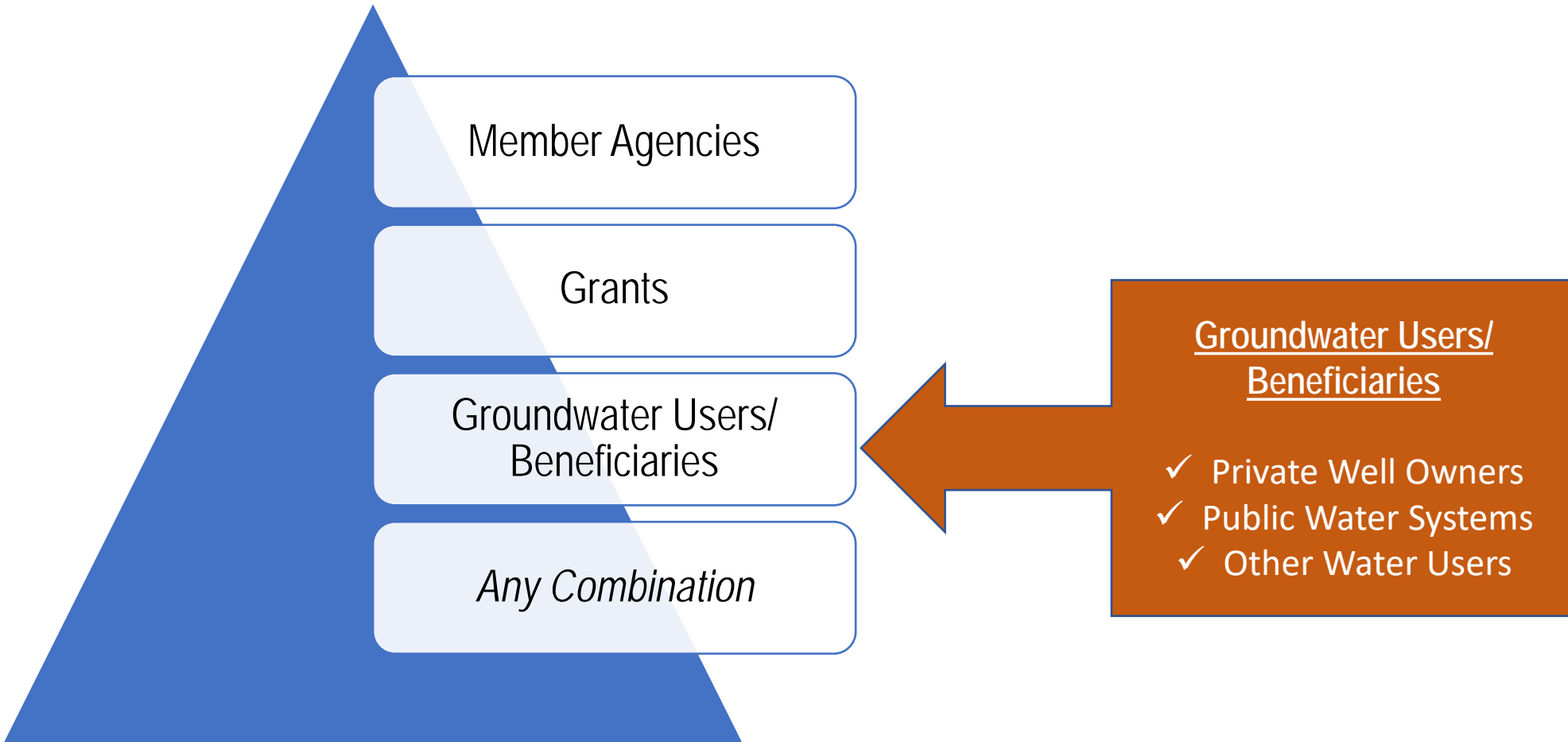
Fee and Rate Study Update



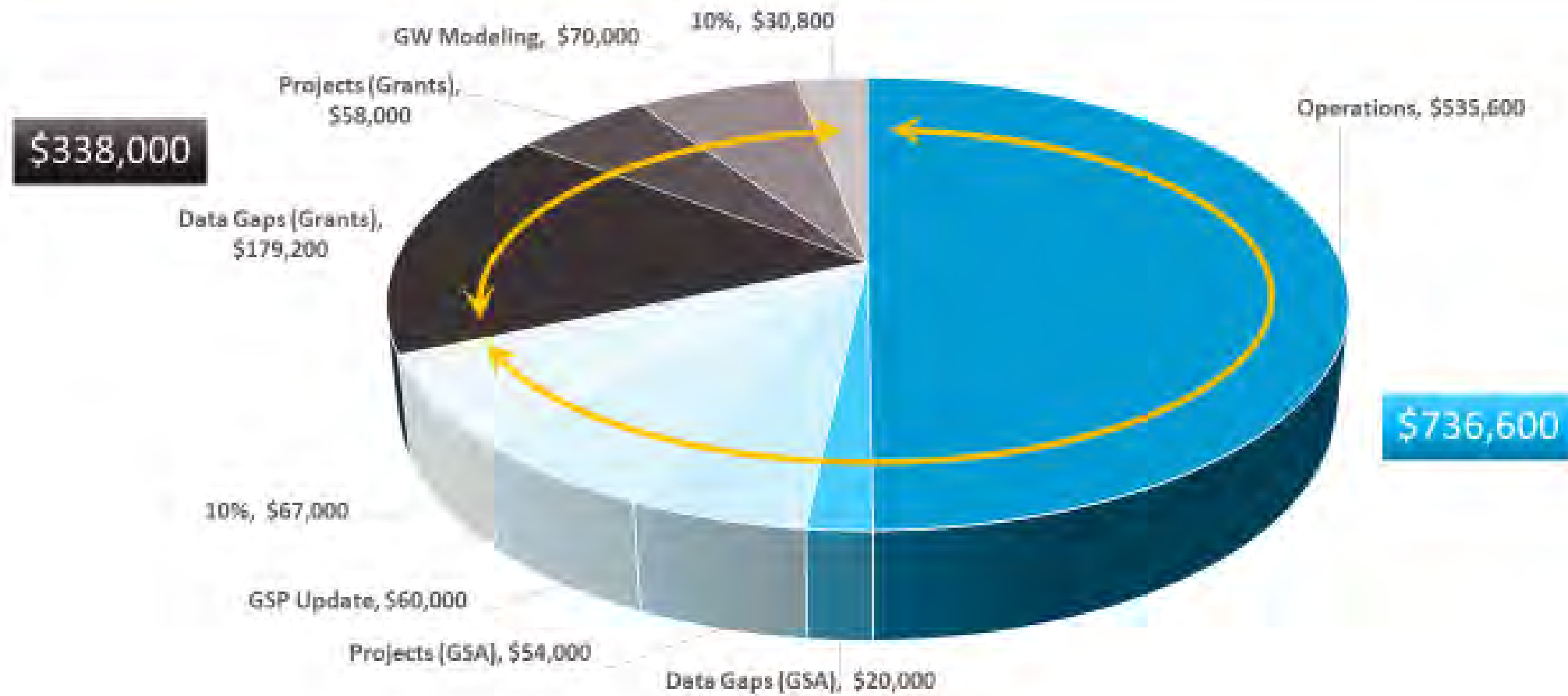
# Background

- Existing Groundwater sustainability fees:
  - \$19.90/AF charged to municipal pumpers
  - County and Sonoma Water covered rural user fee
  - Current funding level supporting the development of GSP through June 2022
- Three Sonoma County GSAs are concurrently conducting rate and fee study update for funding GSP implementation beginning July 1, 2022 (5 Years).
  - SCI Consulting Group and Larry Walker Associates

# Potential Funding Sources Evaluated



# Proposed Budget



# Option A – Fees (9,000 Well Parcels)

Type	Who Pays	Pros	Cons	Range
Regulatory Fees	All groundwater pumpers (cities, farmers, businesses, rural residences, urban sites with wells)	<ul style="list-style-type: none"> <li>• Proportionate to quantity pumped</li> <li>• Credit for recycled &amp; surface water</li> <li>• Like Santa Rosa Plain fee</li> </ul>	<ul style="list-style-type: none"> <li>• High rates</li> <li>• Most private pumping not metered</li> </ul>	\$35- \$50per AF  <u>Rural Residential @ half acre-foot</u>

Well Head Fees	All groundwater pumpers	<ul style="list-style-type: none"> <li>• Simple</li> </ul>	<ul style="list-style-type: none"> <li>• Disproportionate to quantity pumped</li> <li>• Large pumpers pay less, and small pumpers pay more</li> </ul>	\$75 - \$115 per parcel
----------------	-------------------------	--	---	-------------------------

*State Intervention Fees – both a well head AND quantity fee (\$300 per well PLUS \$40 per AF )*

# Option B – Tax/Assessment (*all 80,000 Parcels*)

Type	Who Pays	Pros	Cons	Range
Parcel Tax	<i>All taxable parcels</i>	<ul style="list-style-type: none"> <li>• <i>Lowest rate</i></li> <li>• <i>Could be tiered by land use</i></li> </ul>	<ul style="list-style-type: none"> <li>• <i>Requires voter approval (66.7%)</i></li> <li>• <i>Cannot be implemented until Year 2</i></li> <li>• <i>High cost to implement (± \$140,000)</i></li> </ul>	\$8 - \$14 per parcel
Benefit Assessment	<i>All benefitting</i>	<ul style="list-style-type: none"> <li>• <i>Low rate</i></li> <li>• <i>Proportionate; likely keyed to water usage</i></li> </ul>	<ul style="list-style-type: none"> <li>• <i>Requires landowner vote (50%, weighted)</i></li> <li>• <i>High cost to implement (± \$70,000)</i></li> <li>• <i>Cannot be implemented until Year 2</i></li> </ul>	\$15 - \$25 per AF  <u>Residential @ half rate</u>
Prop 218 Fee	<i>All Water Consumers</i>	<i>Rates like Assessment</i>  <i>No election required</i>	<ul style="list-style-type: none"> <li>• <i>Strict proportionality required</i></li> <li>• <i>Longer process</i></li> <li>• <i>Some legal risk</i></li> </ul>	\$15 - \$25 per AF  <u>Residential @ half rate</u>

# Public Outreach – Rate and Fee Study

## Meeting #1

Date: Tuesday, March 22

Time: 5:30-7:30 PM

Virtual, via Zoom

RSVP: [santarosaplainingroundwater.org](http://santarosaplainingroundwater.org)

## Meeting #2

Date: Wednesday, April 27

Time: 5:30-7:30 PM

In person, location TBD

## Rate and Fee Study for Local Groundwater Sustainability Community Meeting

Learn about groundwater conditions, the need for funding, the proposed fee options and share your feedback.

## Santa Rosa Plain Basin Meeting Date

Tuesday, March 22

Meeting held via Zoom 5:30pm - 7:30pm



SANTA ROSA PLAIN  
**GROUNDWATER**  
SUSTAINABILITY AGENCY

[SantaRosaPlainGroundwater.org](http://SantaRosaPlainGroundwater.org)



# Next Steps

**Mar-Apr**  
Community  
Meetings,  
AC, Staff,  
Liaison

**April**  
Follow-up  
Board to  
finalize  
fees, issue  
hearing  
notice

**May**  
Additional  
Board  
meeting on  
May 12

**June**  
Public  
Hearing on  
Fees, Board  
adoption

**August**  
Annual  
deadline for  
billing on Tax  
Bills



SANTA ROSA PLAIN  
**GROUNDWATER**  
SUSTAINABILITY AGENCY



Questions?