

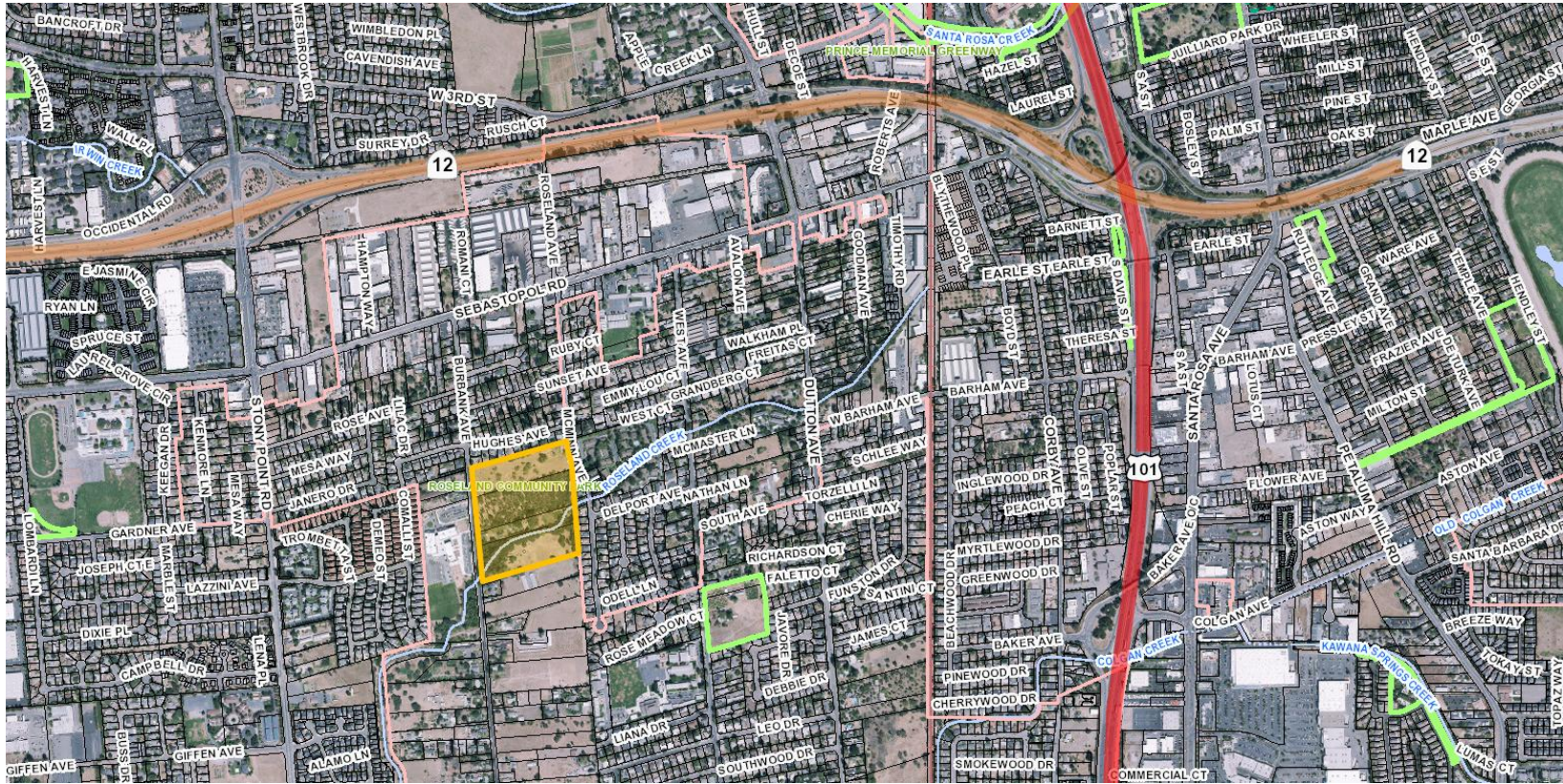


Professional Services Agreement with  
Design Workshop, Inc. to prepare a Master  
Plan, 30% and 100% design and  
engineering plans for Roseland Creek  
Community Park

City Council Meeting  
February 7, 2017

Jen Santos  
Deputy Director, Recreation and Parks

# LOCATION MAP



= Roseland Creek Community Park



# PARK PROPERTY MAP



Roseland Creek Community Park Master Plan includes all parcels

# BACKGROUND

- Roseland Creek Community Park north and south land acquired via Sonoma County Agricultural Preservation and Open Space District (SCAPOS D) matching grant program in 2010 and 2011
- Project to acquire remaining land admitted into 2016 SCAPOS D grant cycle

# BACKGROUND

- 30% design and engineering plans rely upon environmental review by a separate consultant to complete the Master Plan
- 30% design aligned with environmental analysis ensures future Master Plan compliance with CEQA
- Community input included in master plan scope of services
- 100% construction plans for northern section totaling 10.97 acres

# PROCESS

- RFP February 2016
- Five proposals received
- Scoring and review by panel (staff and a Council member)
- Design Workshop, Inc., most qualified and responsive

# RECOMMENDATION

- It is recommended by the Recreation and Parks Department that Council, by resolution, approve the Professional Services Agreement with Design Workshop, Inc. to provide a master plan, 30% and 100% design and engineering plans for Roseland Creek Community Park in the amount of \$187,794.

Questions?