

ABBREVIATIONS

AC	ASPHALT CONCRETE
APN	ASSESSOR'S PARCEL NUMBER
CB	CATCH BASIN
CMU	CONCRETE MODULAR UNIT
DS	RAINWATER DOWN SPOUT
DW	DRIVEWAY
E	ELECTRIC
EP	EDGE OF PAVEMENT
G	GAS
GB	GRADE BREAK
GI	GRATE INLET
GM	GAS METER
HB	HOSE BIB
MB	MAILBOX
PRUE	PRIVATE UTILITY EASEMENT
SD	STORM DRAIN
SDMH	STORM DRAIN MANHOLE
SSCO	SANITARY SEWER CLEAN OUT
TF	TRANSFORMER
UB	UTILITY BOX
VLT	VAULT
W	WATER
WM	WATER METER

SYMBOLS & LEGEND

EXISTING

	FOUND REBAR AND CAP, TAGGED "PLS 5650"
	FOUND SPIKE AND TAG, TAGGED AS NOTED
	FIRE HYDRANT
	FIRE DEPARTMENT CONNECTION
	GAS RISER
	SIGN
	STREET LIGHT
	GUY ANCHOR
	UTILITY POLE
	TREE
	TREE CLUSTER
	PROPERTY LINE
	GRADE BREAK
	FENCE
	STORM DRAIN
	SANITARY SEWER
	WATER
	OVERHEAD UTILITY LINE
	UNDERGROUND ELECTRIC LINE
	UNDERGROUND GAS LINE
	CONCRETE

TOPOGRAPHIC NOTES

UNAUTHORIZED CHANGES & USES: THE PROFESSIONAL PREPARING THIS MAP WILL NOT BE RESPONSIBLE FOR, OR LIABLE FOR, UNAUTHORIZED CHANGES TO OR USES OF THIS MAP. CHANGES TO THIS MAP MUST BE REQUESTED IN WRITING AND MUST BE APPROVED BY THE PROFESSIONAL.

THE LOCATIONS OF EXISTING UNDERGROUND FACILITIES SHOWN ON THESE DRAWINGS ARE APPROXIMATE AND ARE BASED ON OBSERVED TOPOGRAPHIC SURFACE FEATURES. THE PROFESSIONAL PREPARING THIS MAP ASSUMES NO RESPONSIBILITY FOR THE ACCURACY OF THESE FACILITIES OR FOR THE INADVERTENT OMISSION OF RELATED INFORMATION.

BOUNDARY INFORMATION SHOWN HEREON WAS OBTAINED FROM THE RECORD OF SURVEY OF THE LANDS OF CODDINGTOWN, LLC AND SIMON CODDINGTOWN, LLC, FILED IN BOOK 798 OF MAPS, AT PAGE 47-49, SONOMA COUNTY RECORDS.

REFERENCE IS MADE TO A PRELIMINARY TITLES REPORT BY STEWART TITLE DATED SEPTEMBER 06, 2024 - AMENDMENT NO. 1 - FILE NO. 2271216.

BASIS OF BEARINGS: THE RECORD OF SURVEY OF THE LANDS OF CODDINGTOWN, LLC AND SIMON CODDINGTOWN, LLC, FILED IN BOOK 798 OF MAPS, AT PAGE 47-49, SONOMA COUNTY RECORDS.

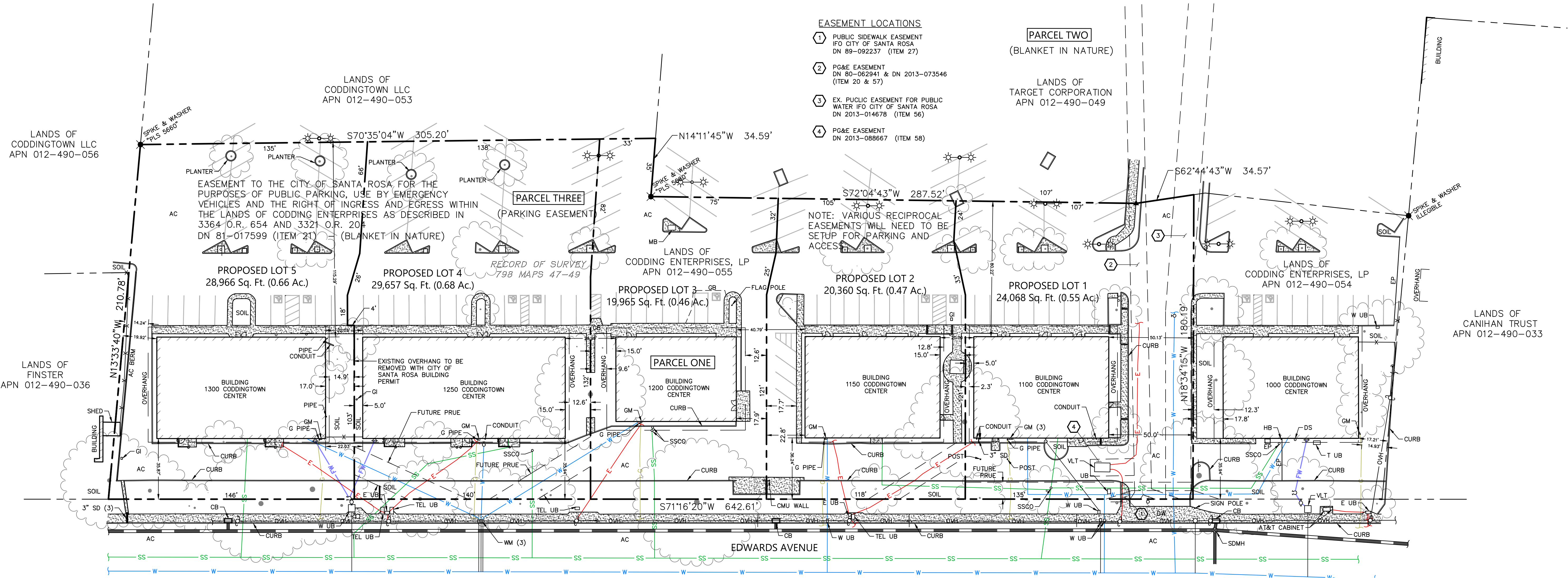
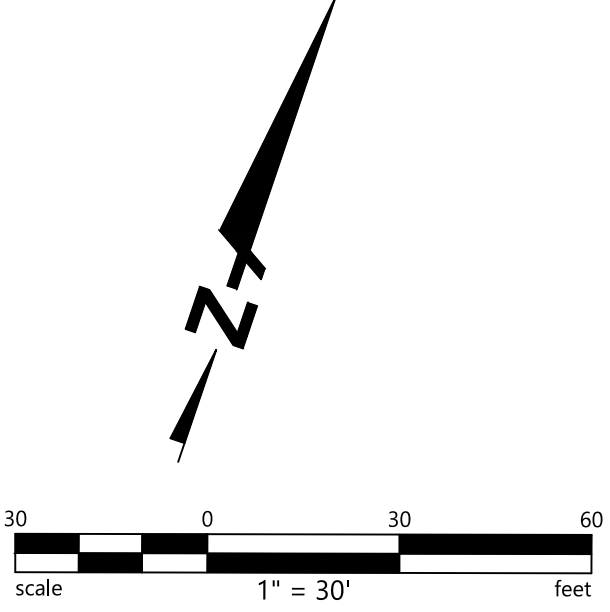
THE BEARINGS AND DISTANCES DO NOT REFLECT A FIELD SURVEY AND DO NOT CONSTITUTE A FORMAL BOUNDARY DETERMINATION.

FIELD SURVEY DATE: 09/18/2023.

BENCHMARK: CITY OF SANTA ROSA BENCHMARK D283, CITY DISK IN WELL MONUMENT AT CENTERLINE OF INTERSECTION OF RANGE AVENUE AND EDWARDS AVENUE.



VICINITY MAP
NOT TO SCALE



**DIMENSIONED SITE PLAN
BACK OFFICES OF CODDINGTOWN
OFF OF EDWARDS AVENUE**

1100, 1150, 1200, 1250 & 1300
CODDINGTOWN CENTER, SANTA ROSA

5 LOTS - 2.82 ACRES

MARCH 2025

PREPARED BY

BKF
BKF ENGINEERS
200 4th STREET
SUITE 300
SANTA ROSA, CA 95401
(707) 583-8500
www.bkf.com

Ralph H. Thomas
RALPH H. THOMAS
03-14-202
PLS 4760

