

# **Total Wine and More and Planet Fitness Sign Variance**

File No.SI22-043

2705 Santa Rosa Ave

---

January 5, 2023

Monet Sheikhali, Senior Planner  
Planning and Economic Development

### Total Wine and More and Planet Fitness Sign Variance

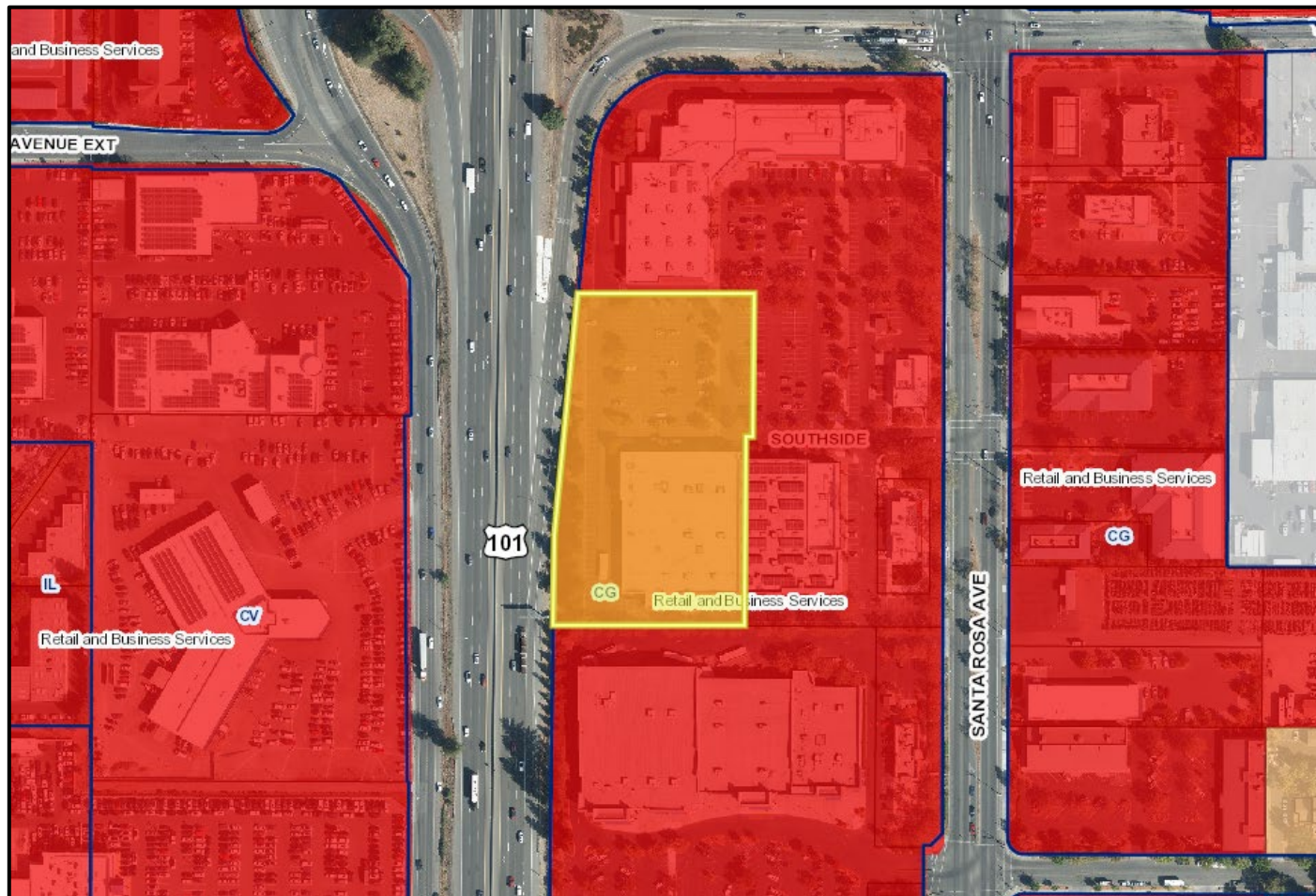
#### **Planet Fitness (213.24 sf total):**

- One storefront wall sign: 106.62 sf and
- One highway facing wall sign: 106.62 sf

#### **Total Wine and More (218,99 sf total):**

- One storefront wall sign: 105.06 sf
- One highway facing wall sign: 105.06 sf
- One tenant panel sign 5.87 sf

Zone: CG  
GP: Retail and Business

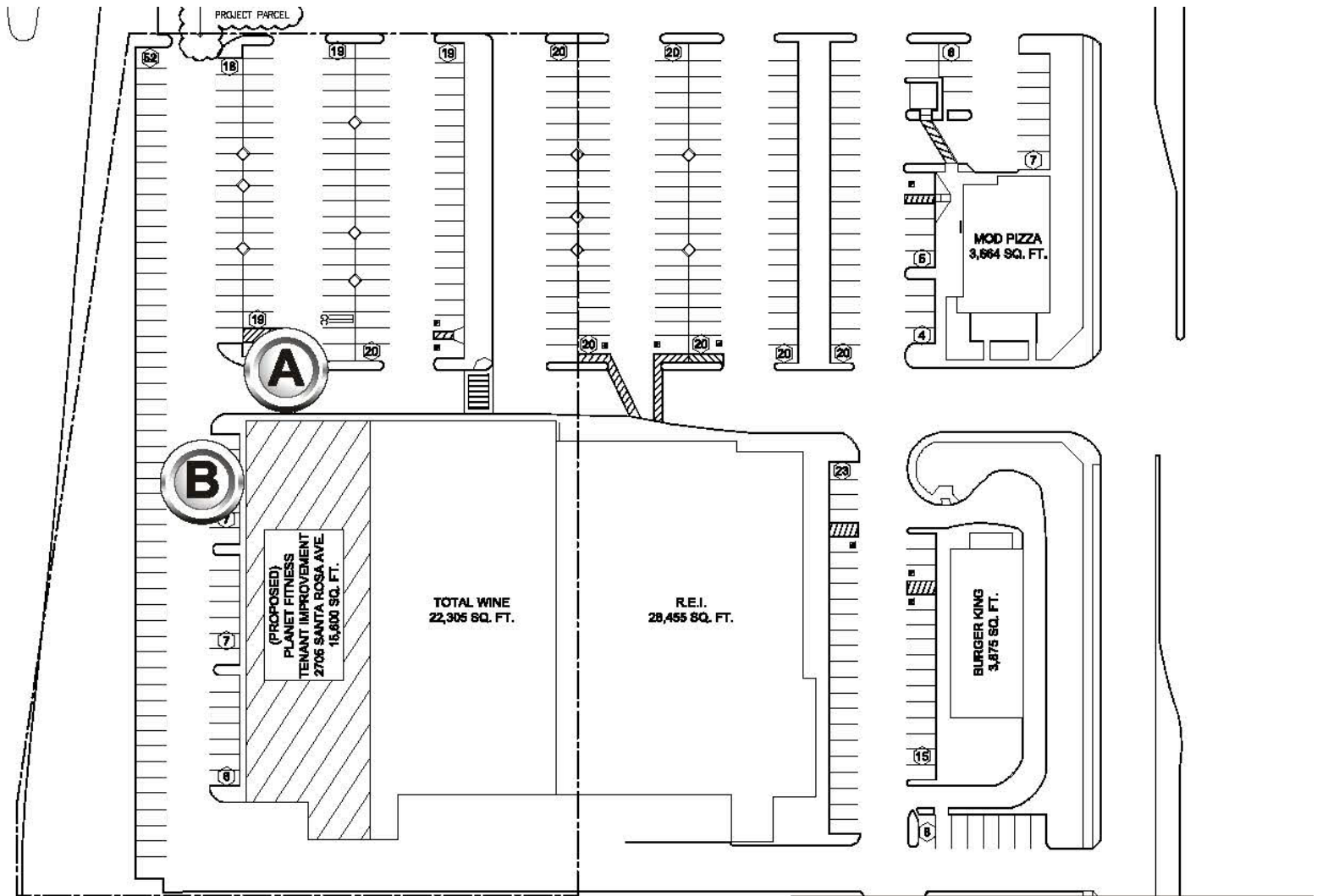




# 2705 Santa Rosa Project Site

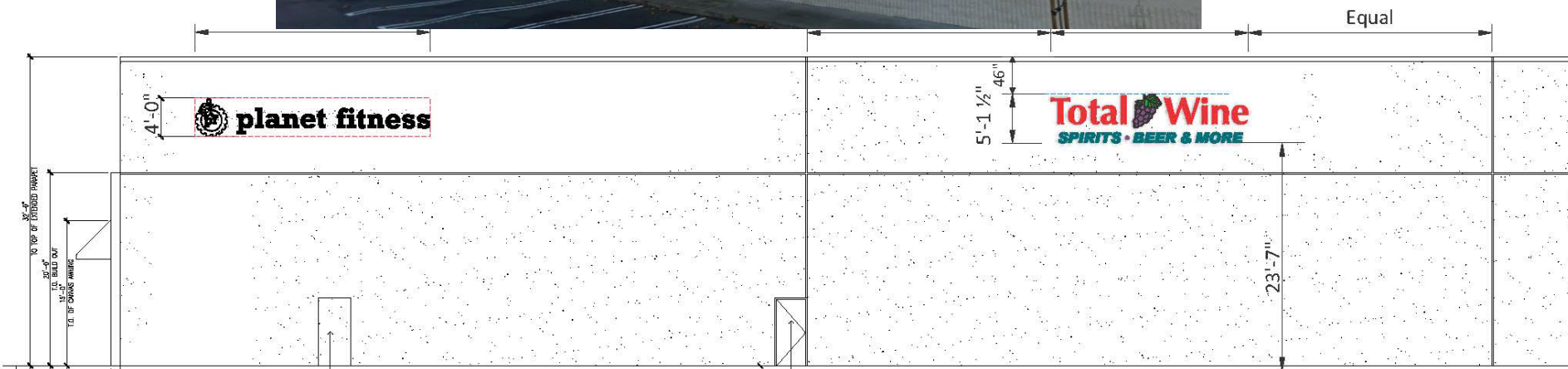


# 2705 Santa Rosa Site Plan



# 2705 Santa Rosa Sign

Highway facing wall sign: 105.06 sf



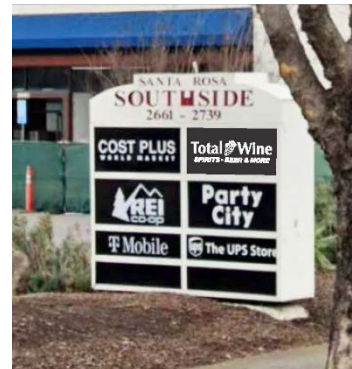


# 2705 Santa Rosa Sign

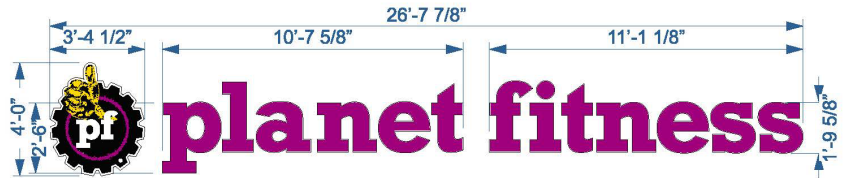
Storefront wall sign: 105.06 sf



Tenant panel sign 5.87 sf



# 2705 Santa Rosa Sign



Storefront wall sign: 106.62 sf and





The proposed project has been reviewed in compliance with the California Environmental Quality Act (CEQA) and qualifies for a Class 11 exemption under CEQA Guidelines Section 15311 in that the proposed project consists of wall signs that are accessory structures.

## Recommendation

The Planning and Economic Development Department recommends that the Zoning Administrator, by resolution, approve a Sign Variance permit for the property located at 2705 Santa Rosa Avenue.

### Questions

Monet Sheikhal, Senior Planner  
Planning and Economic Development  
[msheikhali@srcity.org](mailto:msheikhali@srcity.org)  
(707) 543-4698