

LEGEND

- SIDEWALKS, STREETS, & FLEX-ZONE PARKING: COLORED CONCRETE
- PLAZA PAVING: SCORED CONCRETE OR PERMEABLE PAVERS
- TREE BOSQUE AREAS: GRANITCRETE
- SQUARE PAVING: CAST PAVERS OR SCORED CONCRETE
- MULCH PLANTER AROUND (E) TREES
- REINFORCED TURF
- ROADWAY PAVING (3RD AND 4TH)
- (E) TREES TO REMAIN (REDWOODS UNLESS OTHERWISE NOTED)
- FLOWERING ACCENT TREES
- DECIDUOUS PLAZA SHADE TREES
- POLE-MOUNTED STREET & AREA LIGHTS
- PARKING METER
- REMOVABLE BOLLARDS
- STATIONARY BOLLARDS
- DECORATIVE BARRICADE
- TRASH AND RECYCLING RECEPTACLE
- HYDRATION STATIONS
- PICNIC TABLES
- BIKE PARKING
- BENCHES
- TREE GRATES
- COLOR-CHANGING L.E.D. LIGHTS (FUTURE)

± 20' WIDE SIDEWALK WITH LIGHTING, FURNISHINGS, AND STREET TREES

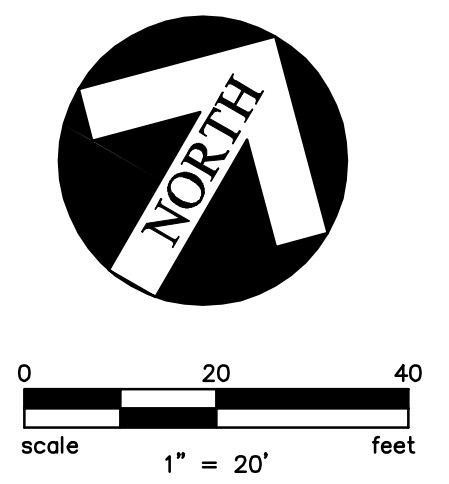
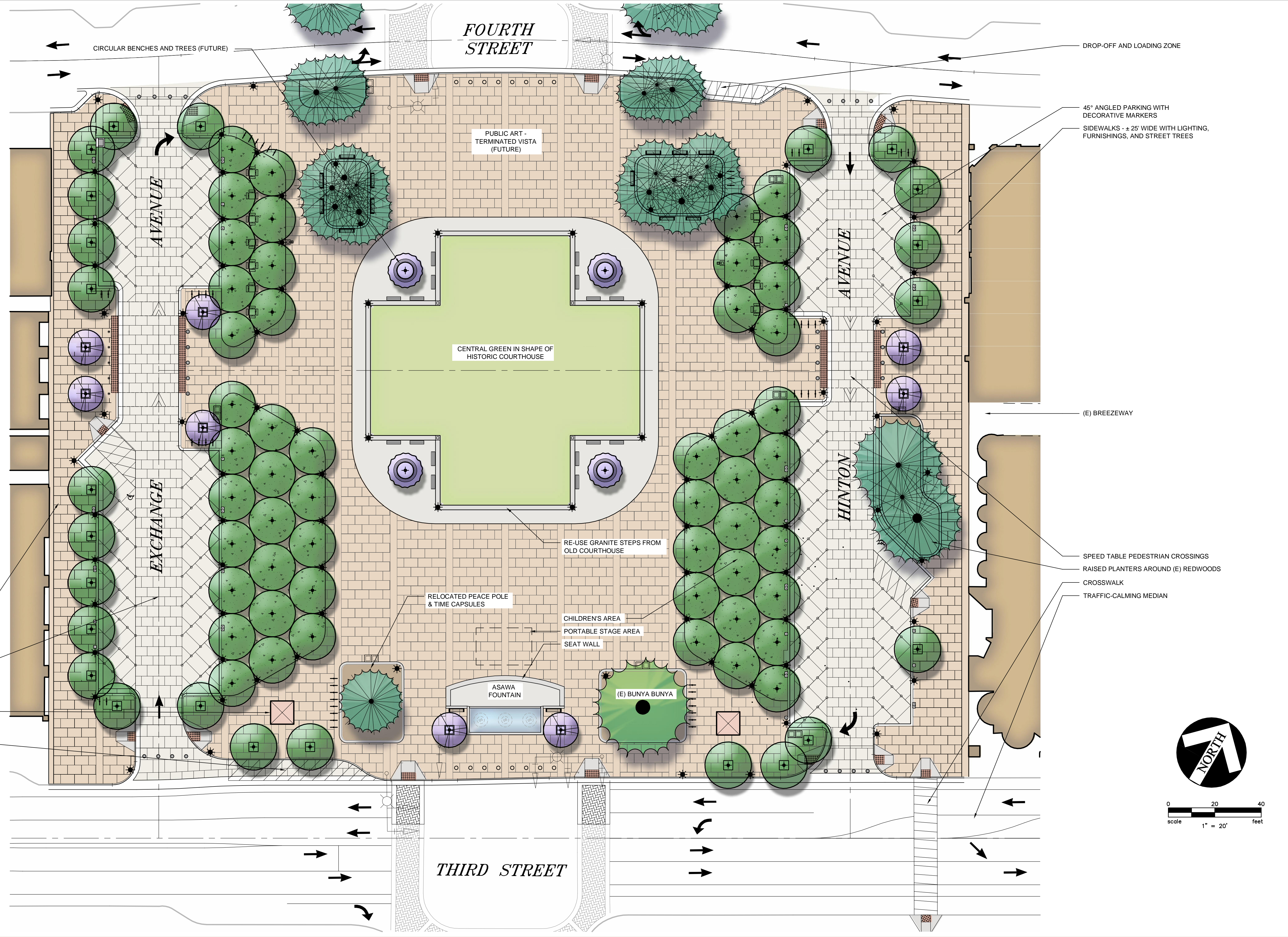
EXCHANGE AND HINTON AVENUE TO HAVE COLORED & SCORED CONCRETE PAVING WITH PARKING DELINEATED BY DECORATIVE MARKERS

INFORMATION KIOSK WITH HISTORIC PLAQUES & EQUIPMENT STORAGE

DROP-OFF AND LOADING ZONE

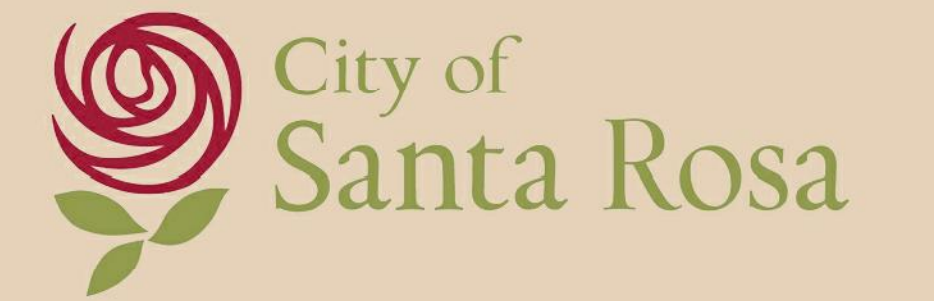
NOTE

THE SITE PLAN IS INTENDED TO CONVEY THE GENERAL ARRANGEMENTS, CHARACTER, & FEATURES OF THE SQUARE. EXACT LOCATIONS, LAYOUT, QUANTITIES, & MATERIALS FOR SPECIFIC FEATURES ARE SUBJECT TO REFINEMENT, MODIFICATION, & REARRANGEMENT.



COURTHOUSE SQUARE REUNIFICATION

Attachment 2 - Master Plan



SANTA ROSA, CA

APRIL 2016

4/18/2016 6:37:26 PM Brian Morrison C:\2015\20160208\Drawings\LA\15028-SP.dwg [User: Brian Morrison] 15028-TP; 15028-HC-EX; TREES; 15028-HC

Copyright © Carlile + Macy