



Contract Award – Bicycle and Pedestrian Gap Closures, Piner Rd And Dutton Ave

City Council Meeting
October 22, 2019

Lisa Welsh, Associate Civil Engineer,
Transportation and Public Works

BACKGROUND

- The project has two locations, Piner Road between Coffey Lane and Range Avenue and eastside of Dutton Avenue just south of Jennings Avenue.
- The first location on Piner Road between Coffey Lane and Range Avenue, will rehabilitate the outside lanes of pavement, provide bicycle lanes and curb ramps.

BACKGROUND

- The second location on the east side of Dutton Avenue just south of Jennings Avenue, will provide sidewalk from the Tesconi Commercial Center to Jennings Avenue.
- Streets will be slurried by applying a thin, quarter-inch roadway coating of liquid asphalt and sand.

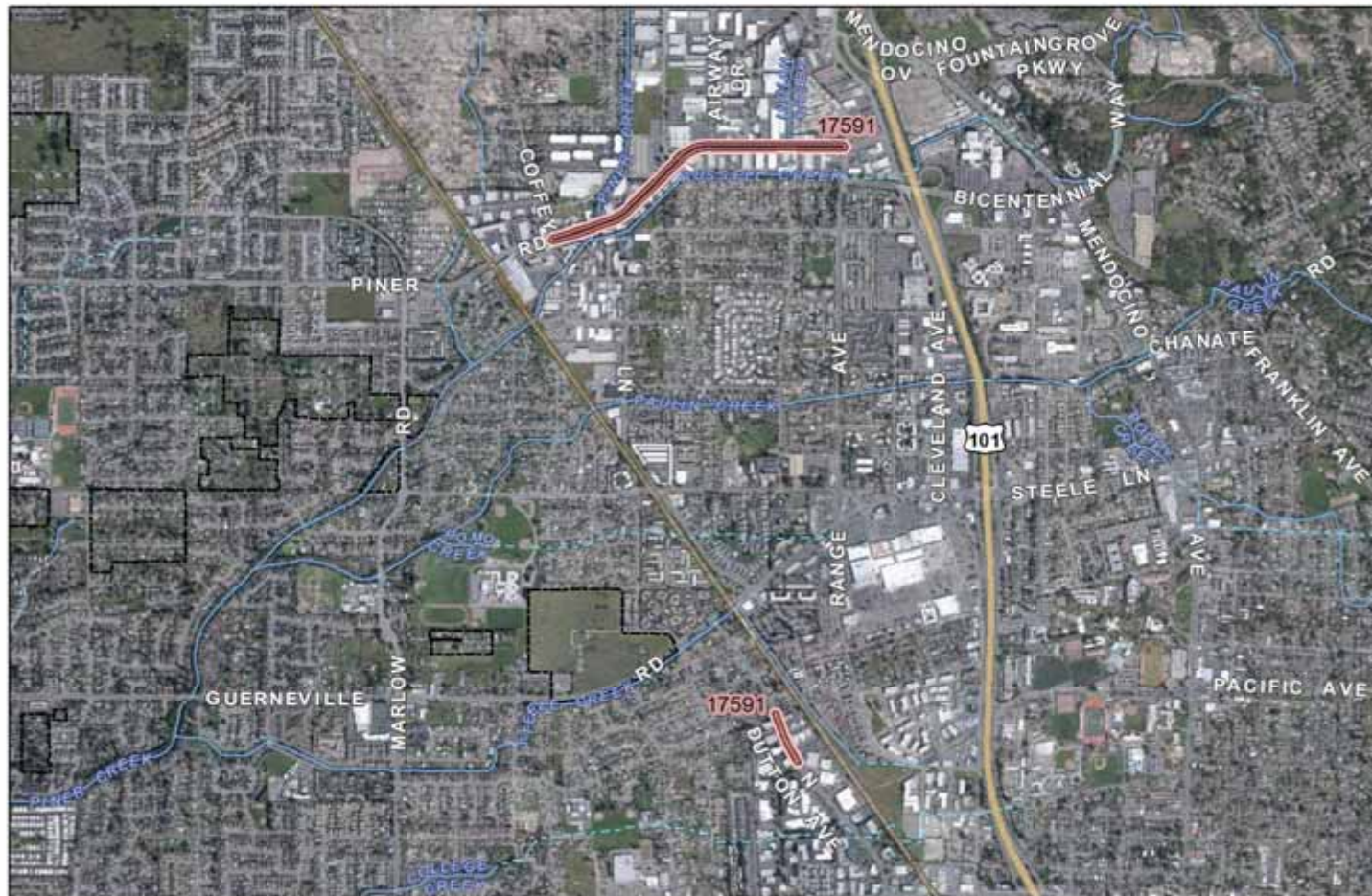
ANALYSIS

- The project was advertised on 8/2/19; four bids were received on 9/5/19, ranging from \$1,158,961.25 to \$1,487,141.77
- The low bid was 0.77% under the Engineer's estimate.
- Construction is anticipated to begin in December of 2019 and last 75 working days.

RECOMMENDATION

- It is recommended by the Transportation and Public Works Department that the Council, by motion, award Contract No. C02198, Bicycle and Pedestrian Gap Closures, Piner Rd and Dutton Ave, in the amount of \$1,158,961.25 to the lowest responsible bidder, Ghilotti Construction Company, Inc. of Santa Rosa, CA, approve a contingency 10% contract contingency, and authorize a total contract amount of 1,274,857.38.

QUESTIONS?




Project Number: 2198

Bicycle and Pedestrian Gap Closures - Piner Rd and Dutton Ave

Project Status: Design

Project Areas (IFAS Charge #'s Labeled)

 **Public Works**



0 300 600 1,200 1,800 2,400 3,000 3,600 4,200 Feet City (Mar 2018) & County (2013) Aerials shown
Map Date: 8/25/2019

- Information and features shown on this map are intended for general location use only and may contain errors. Map produced by City of Santa Rosa, Asset Management Division. -