



Courthouse Square Reunification Project Update

City Council Meeting
July 12, 2016

Colleen Ferguson
Deputy Director – Capital Projects Engineering

CONSTRUCTION UPDATE

- Construction started May 23, 2016
- Art pieces and historic plaques removed
- Demolition and rough grading
- Sewer, water and storm drain lines
- Fifth St parking lot entrance



PUBLIC OUTREACH

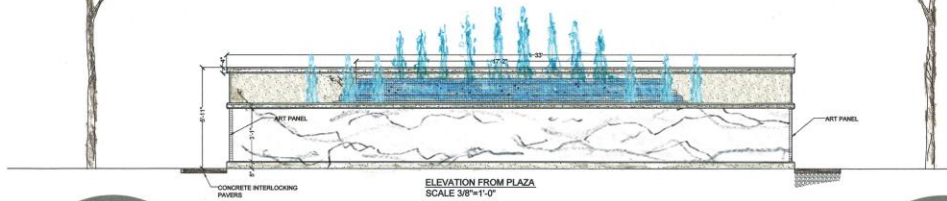
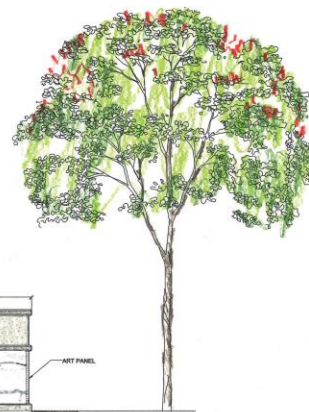
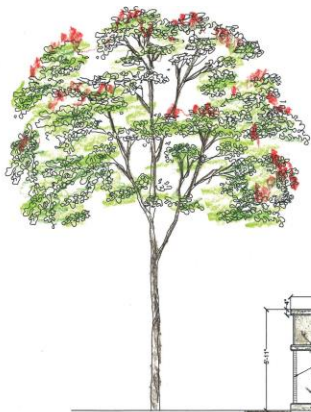


PLAQUES

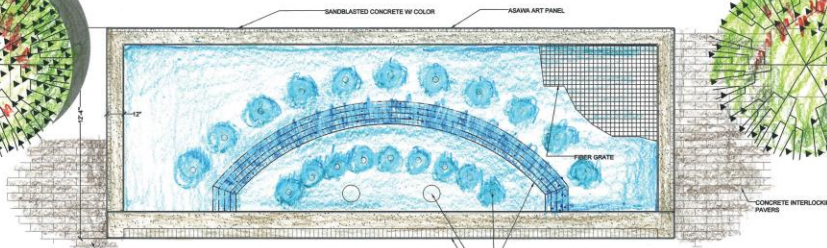
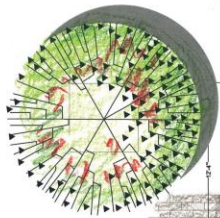


ENHANCEMENTS

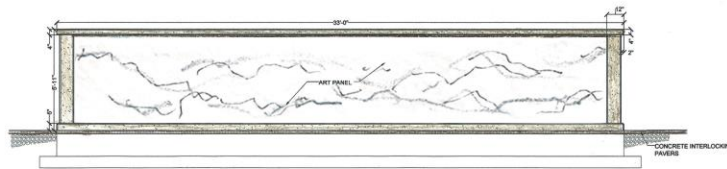
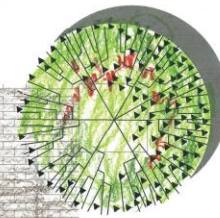
Asawa Art and Fountain



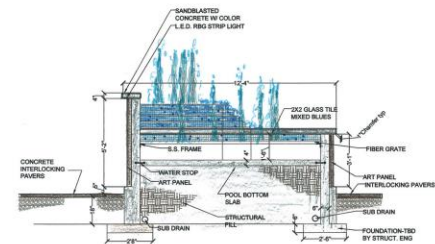
ELEVATION FROM PLAZA
SCALE: 3/8"=1'-0"



PLAN VIEW
SCALE: 3/8"=1'-0"

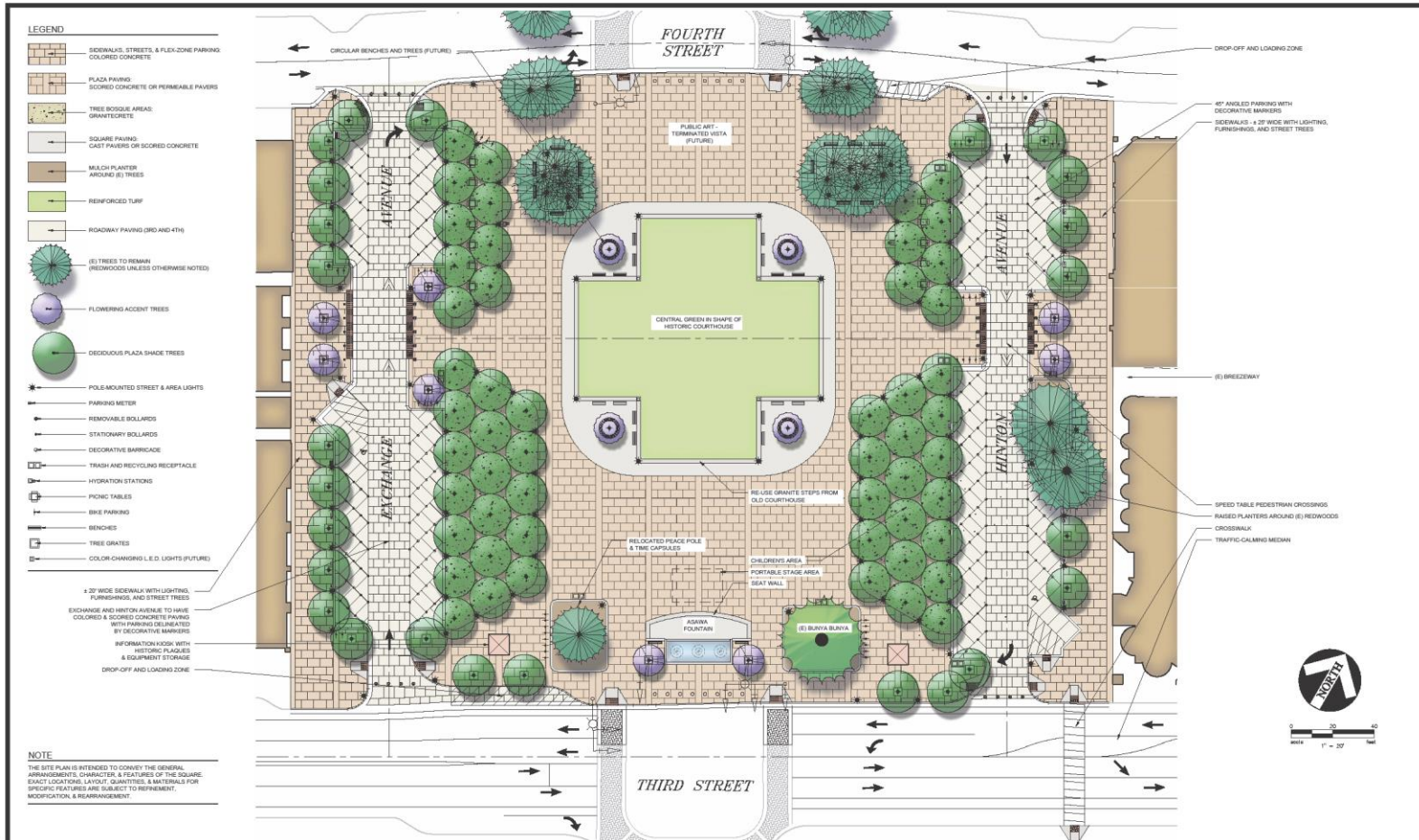


ELEVATION FROM 3 d STREET
SCALE: 3/8"=1'-0"



SECTION A-A
SCALE: 3/8"=1'-0"

REVISED MASTER PLAN



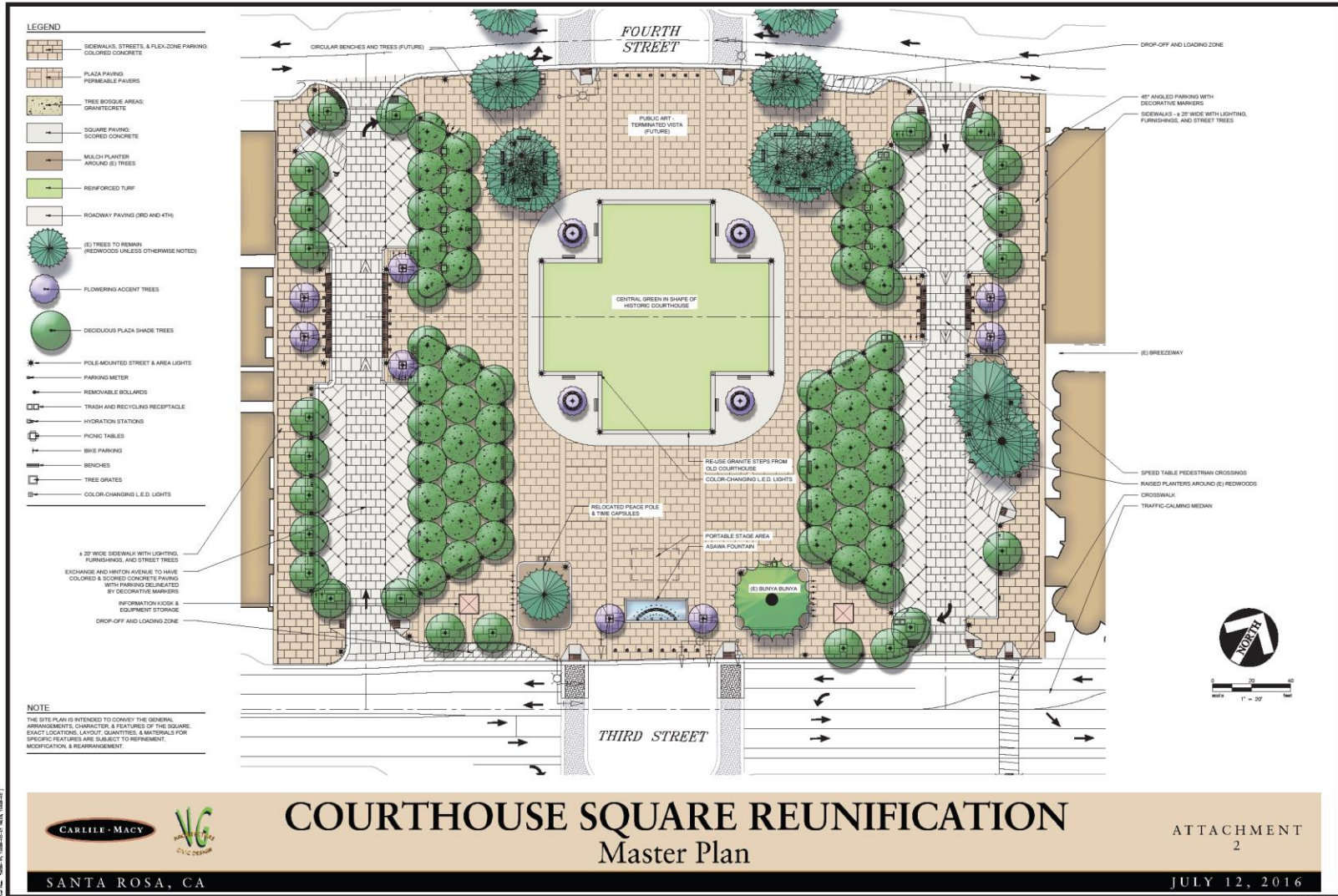
COURTHOUSE SQUARE REUNIFICATION Attachment 2 - Master Plan



SANTA ROSA, CA

APRIL 2016

NEW REVISED MASTER PLAN



ANALYSIS

Master Plan revisions:

- Tree distribution and placement
- Westerly accessible parking space move
- Information kiosk – plaques elsewhere
- Barricades instead of bollards at ends of side streets
- Smaller footprint for Asawa fountain

ANALYSIS

- Summarize expenditures to date:
- Design:
- Construction:
- Construction Contingency:
- Construction Management and Inspection:

RECOMMENDATION

By separate resolutions:

- Authorize replacement of the Rosenberg plaque in the square
- Approve new revised Master Plan for the Courthouse Square Reunification Project

RECOMMENDATION

By motion:

- Accept the expenditure report
- Authorize additional contingency for design upgrades
- Authorize plaque containing the name of Landscape Architect Leland H. Noel to be given to his daughter

Questions

