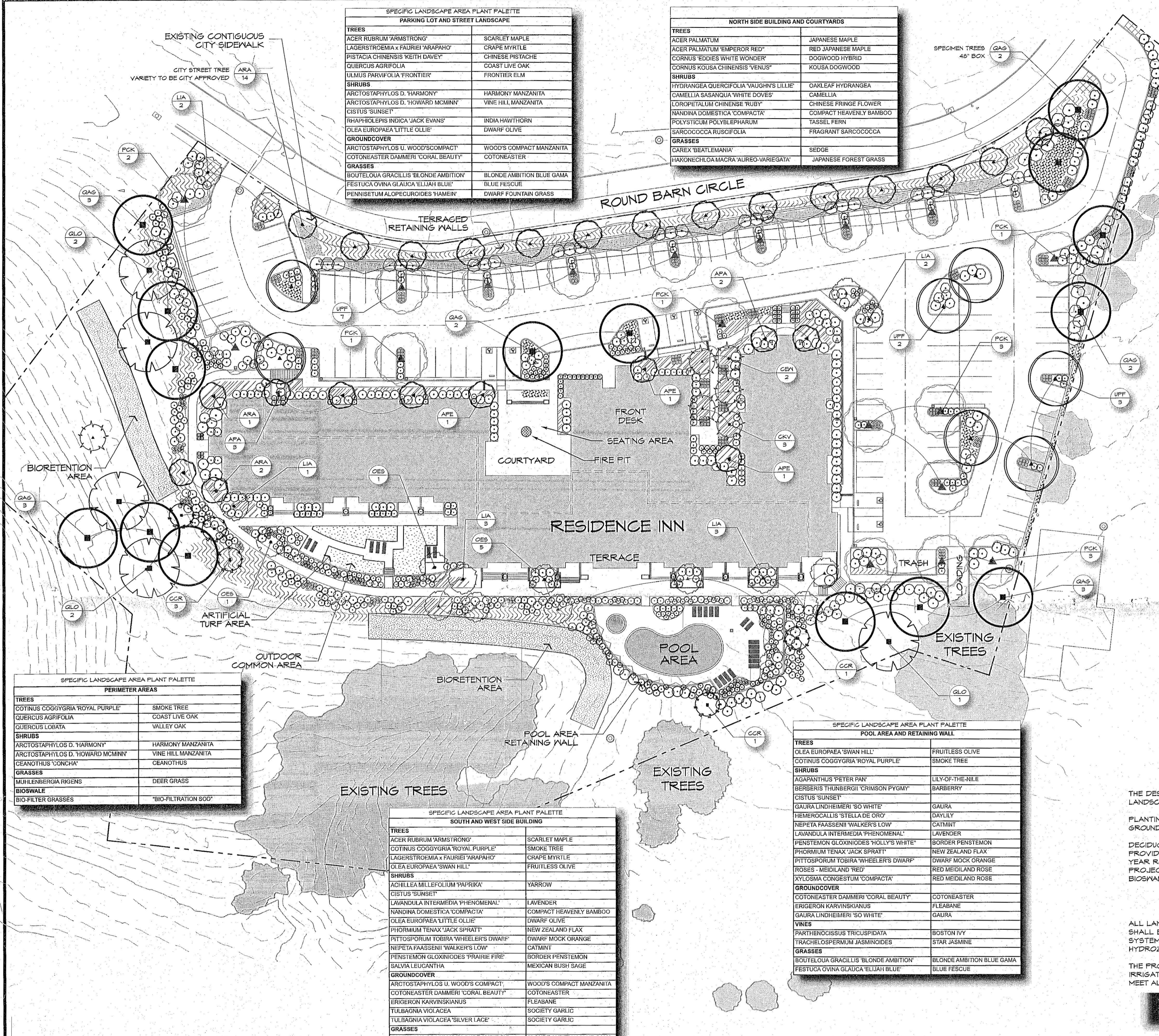


PRELIMINARY LANDSCAPE PLAN

RESIDENCE INN SANTA ROSA BY MARRIOTT  
SANTA ROSA, CALIFORNIA



**SPECIFIC LANDSCAPE AREA PLANT PALETTE**  
**PARKING LOT AND STREET LANDSCAPE**

TREES	
ACER RUBRUM 'ARMSTRONG'	SCARLET MAPLE
LAGERSTROEMIA x FAURIEI 'ARAPAHO'	CRAPE MYRTLE
PISTACIA CHINENSIS 'KEITH DAVEY'	CHINESE PISTACHE
QUERCUS AGRIFOLIA	COAST LIVE OAK
ULMUS PARVIFOLIA 'FRONTIER'	FRONTIER ELM
SHRUBS	
ARCTOSTAPHYLOS D. 'HARMONY'	HARMONY MANZANITA
ARCTOSTAPHYLOS D. 'HOWARD MCMINN'	VINE HILL MANZANITA
CISTUS 'SUNSET'	WINE HILL MANZANITA
RHAPHOLEPIS INDICA 'JACK EVANS'	INDIA HAWTHORN
OLEA EUROPAEA 'LITTLE OLLIE'	DWARF OLIVE
GROUND COVER	
ARCTOSTAPHYLOS U. 'WOODS COMPACT'	WOODS COMPACT MANZANITA
COTONEASTER DAMMERI 'CORAL BEAUTY'	COTONEASTER
GRASSES	
BOUTELOUA GRACILLIS 'BLONDE AMBITION'	BLONDE AMBITION BLUE GAMA
FESTUCA OVINA GLAUCA 'ELIJAH BLUE'	BLUE FESCUE
PENNISETUM ALOPECUROIDES 'HAMEIN'	DWARF FOUNTAIN GRASS

**NORTH SIDE BUILDING AND COURTYARDS**

TREES	
ACER PALMATUM	JAPANESE MAPLE
ACER PALMATUM 'EMPEROR RED'	RED JAPANESE MAPLE
CORNUS 'EDDIE'S WHITE WONDER'	DOGWOOD HYBRID
CORNUS KOUSA CHINENSIS 'VENUS'	KOUSA DOGWOOD
SHRUBS	
HYDRANGEA QUERCIFOLIA 'VAUGHN'S LILLIE'	OAKLEAF HYDRANGEA
CAMELLIA SASANGUA 'WHITE DOVES'	CAMELLIA
LOROPETALUM CHINENSIS 'RUBY'	CHINESE FRINGE FLOWER
MANDINA DOMESTICA 'COMPACTA'	COMPACT HEAVENLY BAMBOO
POLYSTICHUM POLYBIPHARUM	YASSEL FERN
SARCOCOCCA RUSCIFOLIA	FRAGRANT SARCOCOCCA
GRASSES	
CAREX 'BEATLEMANIA'	SEDEGE
HAXONECHLOA MACRA 'AURO-VAREGATA'	JAPANESE FOREST GRASS

**SPECIFIC LANDSCAPE AREA PLANT PALETTE**  
**POOL AREA AND RETAINING WALL**

TREES	
OLEA EUROPAEA 'SWAN HILL'	FRUITLESS OLIVE
COTINUS COGOGYRIA 'ROYAL PURPLE'	SMOKE TREE
SHRUBS	
AGAPANTHUS 'PETER PAN'	LILY-OF-THE-NILE
BERBERIS THUNBERGII 'CRIMSON PYGMY'	BARBERRY
CISTUS 'SUNSET'	WINE HILL MANZANITA
GAURA LINDHEIMERI 'SO WHITE'	GAURA
HEMEROCALLIS 'STELLA DE ORO'	DAYLILY
NEPETA FAASSENI 'WALKER'S LOW'	CATMINT
LAVANDULA INTERMEDIA 'PHENOMENAL'	LAVENDER
PENSTEMON GLOXINIODES 'HOLLY'S WHITE'	BORDER PENSTEMON
PHORMIUM TENAX 'JACK SPRATT'	NEW ZEALAND FLAX
PITTIOSPORUM TOBIRA 'WHEELER'S DWARF'	DWARF MOCK ORANGE
ROSES - MEIDLAND 'RED'	RED MEIDLAND ROSE
XYLOSMA CONGESTUM 'COMPACTA'	RED MEIDLAND ROSE
GROUND COVER	
COTONEASTER DAMMERI 'CORAL BEAUTY'	COTONEASTER
ERIGERON KARVINSKIANUS	FLEABANE
GAURA LINDHEIMERI 'SO WHITE'	GAURA
VINES	
PARTHENOCISSUS TRICUSPIDATA	BOSTON IVY
TRACHELOSPERMUM JASMINOIDES	STAR JASMINE
GRASSES	
BOUTELOUA GRACILLIS 'BLONDE AMBITION'	BLONDE AMBITION BLUE GAMA
FESTUCA OVINA GLAUCA 'ELIJAH BLUE'	BLUE FESCUE

**SPECIFIC LANDSCAPE AREA PLANT PALETTE**  
**SOUTH AND WEST SIDE BUILDING**

TREES	
ACER RUBRUM 'ARMSTRONG'	SCARLET MAPLE
COTINUS COGOGYRIA 'ROYAL PURPLE'	SMOKE TREE
LAGERSTROEMIA x FAURIEI 'ARAPAHO'	CRAPE MYRTLE
OLEA EUROPAEA 'SWAN HILL'	FRUITLESS OLIVE
SHRUBS	
ACHILLEA MILLEFOLIUM 'PAPRIKA'	YARROW
CISTUS 'SUNSET'	WINE HILL MANZANITA
LAVANDULA INTERMEDIA 'PHENOMENAL'	LAVENDER
MANDINA DOMESTICA 'COMPACTA'	COMPACT HEAVENLY BAMBOO
OLEA EUROPAEA 'LITTLE OLLIE'	DWARF OLIVE
PHORMIUM TENAX 'JACK SPRATT'	NEW ZEALAND FLAX
PITTIOSPORUM TOBIRA 'WHEELER'S DWARF'	DWARF MOCK ORANGE
NEPETA FAASSENI 'WALKER'S LOW'	CATMINT
PENSTEMON GLOXINIODES 'PRAIRIE FIRE'	BORDER PENSTEMON
SALVIA LEUCANTHA	MEXICAN BUSH SAGE
GROUND COVER	
ARCTOSTAPHYLOS U. 'WOODS COMPACT'	WOODS COMPACT MANZANITA
COTONEASTER DAMMERI 'CORAL BEAUTY'	COTONEASTER
ERIGERON KARVINSKIANUS	FLEABANE
TULBAGNIA VIOLACEA	SOCIETY GARLIC
TULBAGNIA VIOLACEA 'SILVER LACE'	SOCIETY GARLIC
GRASSES	
BOUTELOUA GRACILLIS 'BLONDE AMBITION'	BLONDE AMBITION BLUE GAMA
FESTUCA OVINA GLAUCA 'ELIJAH BLUE'	BLUE FESCUE
PENNISETUM ALOPECUROIDES 'HAMEIN'	DWARF FOUNTAIN GRASS

**SPECIFIC LANDSCAPE AREA PLANT PALETTE**  
**PERIMETER AREAS**

TREES	
COTINUS COGOGYRIA 'ROYAL PURPLE'	SMOKE TREE
QUERCUS AGRIFOLIA	COAST LIVE OAK
QUERCUS LOBATA	VALLEY OAK
SHRUBS	
ARCTOSTAPHYLOS D. 'HARMONY'	HARMONY MANZANITA
ARCTOSTAPHYLOS D. 'HOWARD MCMINN'	VINE HILL MANZANITA
CEANOETHUS 'CONCHA'	CEANOETHUS
GRASSES	
MULLEBERGIA RIGENS	DEER GRASS
BIOSWALE	
BIO-FILTER GRASSES	'BIO-FILTRATION SOD'

**PRELIMINARY PLANT LEGEND**

SYMBOL	SIZE	BOTANICAL NAME	COMMON NAME	REMARKS	WATER USE PER WUCOLS IV
<b>TREES</b>					
APA	24	ACER PALMATUM	JAPANESE MAPLE	MULTI-TRUNK	M
APE	24	ACER PALMATUM 'EMPEROR RED'	RED JAPANESE MAPLE	MULTI-TRUNK	M
ARA	24	ACER RUBRUM 'ARMSTRONG'	SCARLET MAPLE		M
CEW	24	CORNUS 'EDDIE'S WHITE WONDER'	DOGWOOD HYBRID		M
KCK	24	CORNUS KOUSA CHINENSIS 'VENUS'	KOUSA DOGWOOD		M
CRP	24	COTINUS COGOGYRIA 'ROYAL PURPLE'	SMOKE TREE	MULTI-TRUNK	L
LIA	24	LAGERSTROEMIA x FAURIEI 'ARAPAHO'	CRAPE MYRTLE		L
LSA	24	LAURUS 'SARATOGA'	LAUREL	STANDARD	L
OSH	24	OLEA EUROPAEA 'SWAN HILL'	FRUITLESS OLIVE	MULTI-TRUNK; SPECIMEN TREE	VL
PCK	24	PISTACIA CHINENSIS 'KEITH DAVEY'	CHINESE PISTACHE		L
QAG	24/36	QUERCUS AGRIFOLIA	COAST LIVE OAK	CALIFORNIA NATIVE	VL
QLO	24	QUERCUS LOBATA	VALLEY OAK	CALIFORNIA NATIVE	L
UPD	24	ULMUS PARVIFOLIA 'FRONTIER'	FRONTIER ELM		M
<b>SHRUBS</b>					
APP	1	AGAPANTHUS 'PETER PAN'	LILY-OF-THE-NILE		L
AHA	5	ARCTOSTAPHYLOS D. 'HARMONY'	HARMONY MANZANITA	CALIFORNIA NATIVE	L
ADH	5	ARCTOSTAPHYLOS D. 'HOWARD MCMINN'	VINE HILL MANZANITA	CALIFORNIA NATIVE	L
BTC	5	BERBERIS THUNBERGII 'CRIMSON PYGMY'	BARBERRY		M
CSW	5	CAMELLIA SASANGUA 'WHITE DOVES'	CAMELLIA		M
CCO	5	CEANOETHUS 'CONCHA'	CEANOETHUS	CALIFORNIA NATIVE	L
CSU	5	CISTUS 'SUNSET'	WINE HILL MANZANITA		L
DOM	5	DAPHNE ODORA 'MARGINATA'	WINTER DAPHNE		M
HGV	5	HYDRANGEA QUERCIFOLIA 'VAUGHN'S LILLIE'	OAKLEAF HYDRANGEA		M
LIP	5	LAVANDULA INTERMEDIA 'PHENOMENAL'	LAVENDER		L
LOR	5	LOROPETALUM CHINENSIS 'RUBY'	CHINESE FRINGE FLOWER		L
NDC	5	MANDINA DOMESTICA 'COMPACTA'	COMPACT HEAVENLY BAMBOO		L
OEL	5	OLEA EUROPAEA 'LITTLE OLLIE'	DWARF OLIVE		VL
PGL	5	PENSTEMON GLOXINIODES 'HOLLY'S WHITE'	BORDER PENSTEMON	SCARLET	M
PTJ	5	PHORMIUM TENAX 'JACK SPRATT'	NEW ZEALAND FLAX		L
PTW	5	PITTIOSPORUM TOBIRA 'WHEELER'S DWARF'	DWARF MOCK ORANGE	3' O.C. TRI. SPACING	L
RJ	5	RHAPHOLEPIS INDICA 'JACK EVANS'	INDIA HAWTHORN		L
RSK	5	RIBES SANGUINUM 'KING EDWARD VII'	PINK WINTER CURRANT	CALIFORNIA NATIVE	L
RME	5	ROSES - MEIDLAND 'RED'	RED MEIDLAND ROSE		M
SRU	5	SARCOCOCCA RUSCIFOLIA	FRAGRANT SARCOCOCCA		L
<b>GROUND COVER</b>					
	1	ARCTOSTAPHYLOS U. 'WOODS COMPACT'	WOODS COMPACT MANZANITA	6' O.C. TRI. SPACING	L
	1	COTONEASTER DAMMERI 'CORAL BEAUTY'	COTONEASTER	6' O.C. TRI. SPACING	L
TVI	1	TULBAGNIA VIOLACEA	SOCIETY GARLIC	2' O.C. TRI. SPACING	L
TVS	1	TULBAGNIA VIOLACEA 'SILVER LACE'	SOCIETY GARLIC	2' O.C. TRI. SPACING	L
<b>VINES</b>					
PTR	5	PARTHENOCISSUS TRICUSPIDATA	BOSTON IVY		L
TJA	5	TRACHELOSPERMUM JASMINOIDES	STAR JASMINE		M
<b>PERENNIALS</b>					
AMC	1	ACHILLEA MILLEFOLIUM 'PAPRIKA'	YARROW	CALIFORNIA NATIVE	L
EKA	1	ERIGERON KARVINSKIANUS	FLEABANE	BLUE	L
GLS	1	GAURA LINDHEIMERI 'SO WHITE'	GAURA		M
HST	1	HEMEROCALLIS 'STELLA DE ORO'	DAYLILY	24" OC. TRI. SPACING	M
NFW	1	NEPETA FAASSENI 'WALKER'S LOW'	CATMINT	2' O.C. TRI. SPACING	L
PGP	1	PENSTEMON GLOXINIODES 'PRAIRIE FIRE'	BORDER PENSTEMON	SCARLET	M
SLE	1	SALVIA LEUCANTHA	MEXICAN BUSH SAGE		L
<b>GRASSES</b>					
BGB	1	BOUTELOUA GRACILLIS 'BLONDE AMBITION'	BLONDE AMBITION BLUE GAMA		L
FOS	1	FESTUCA OVINA GLAUCA 'ELIJAH BLUE'	BLUE FESCUE		L
MRI	1	MULLEBERGIA RIGENS	DEER GRASS	CALIFORNIA NATIVE, 18" OC TRI SPACING	L
PAH	1	PENNISETUM ALOPECUROIDES 'HAMEIN'	DWARF FOUNTAIN GRASS	3' OC, Triangular Spacing	L
<b>BIOSWALE</b>					
SOD		BIO-FILTER GRASSES	'BIO-FILTRATION SOD'	AS PRODUCED BY DELTA BLUEGRASS	L
<b>OTHER</b>					
		MULCH: FIR BARK, 1/2" MINUS		3" DEPTH; ALL LANDSCAPE AREAS	

**LANDSCAPE DESIGN INTENT**

THE DESIGN INTENT OF THIS PROJECT IS TO PROVIDE AN ATTRACTIVE, DURABLE, LOW MAINTENANCE AND LOW WATER CONSUMING LANDSCAPE WHICH EMBRACES THE SONOMA COUNTY AESTHETIC.

PLANTING SHALL INCLUDE A MIXTURE OF HORTICULTURALLY APPROPRIATE SHRUB AND GROUND COVER PLANTINGS. SHRUBS AND GROUND COVER PLANTINGS SHALL CONSIST OF MEDIUM, LOW WATER USE PLANTS (AS DEFINED BY THE 2014 EDITION WUCOLS IV).

DECIDUOUS, FLOWERING ACCENT TREES ARE PROPOSED TO CREATE INTEREST AND CHARACTER. LARGE DECIDUOUS SHADE SHALL PROVIDE CANOPY SHADE IN THE PARKING LOTS AND PEDESTRIAN OUTDOOR SPACES. BROADLEAF EVERGREEN TREES WILL PROVIDE YEAR ROUND INTEREST AND SCREENING FROM ADJACENT PROPERTIES. LOCALLY NATIVE OAKS WILL BE USED TO INTERFACE THE PROJECT WITH THE SURROUNDING HILLSIDE. LAWN IS NOT PLANNED FOR ANY PORTION OF THE LANDSCAPED AREAS. REQUIRED BIOSWALES WILL BE LANDSCAPED WITH A SOD PRODUCT DEVELOPED SPECIFICALLY FOR BIOFILTRATION.

**IRRIGATION DESIGN INTENT**

ALL LANDSCAPE AREAS SHALL BE IRRIGATED BY AN AUTOMATIC IRRIGATION SYSTEM WITH WEATHER SENSOR OVERRIDE. SENSOR SHALL BE CAPABLE OF CALCULATING EVAPOTRANSPIRATION AND SHALL ADJUST FOR LOCAL WEATHER. THE ENTIRE IRRIGATION SYSTEM SHALL BE ON AN AUTOMATICALLY CONTROLLED SYSTEM WITH SEPARATE PROGRAMS CAPABLE OF IRRIGATING EACH HYDROZONE INDEPENDENTLY.

THE PROPOSED TREE SHALL BE IRRIGATED VIA SEPARATE, DEDICATED BUBBLER CIRCUIT. ALL OTHER LANDSCAPE AREAS SHALL BE IRRIGATED VIA AN IN-LINE DRIP EMITTER IRRIGATION SYSTEM. THE INTENT OF THE LANDSCAPE AND WATER DELIVERY SYSTEMS IS TO MEET ALL ASPECTS OF THE CITY OF SANTA ROSA WATER EFFICIENCY LANDSCAPE ORDINANCE (MEL0).

**PRELIMINARY LANDSCAPE PLAN**

