

Water and Recycled Water Supply Update

Board of Public Utilities Meeting

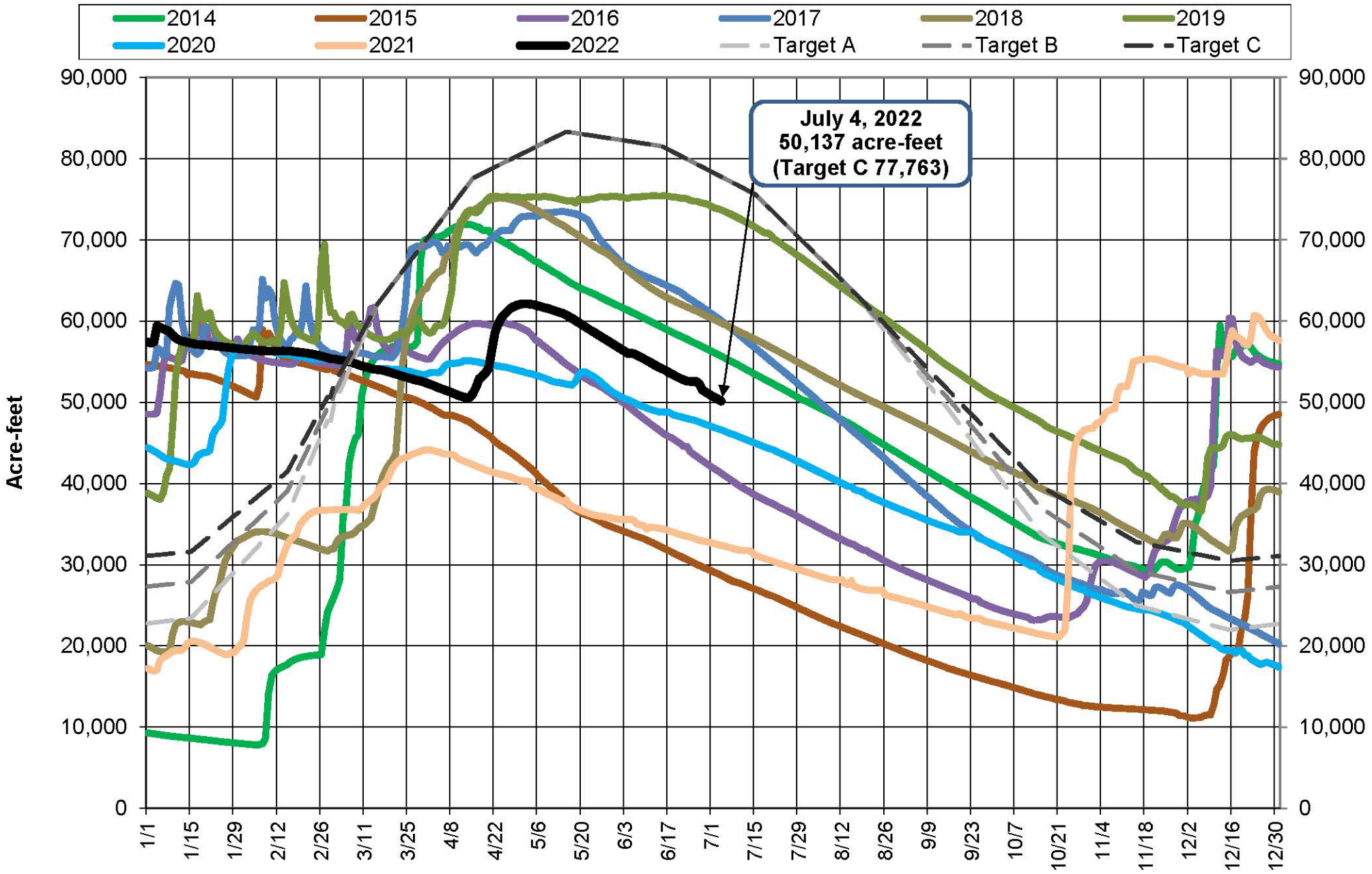
July 7, 2022

Peter Martin – Deputy Director Water Resources

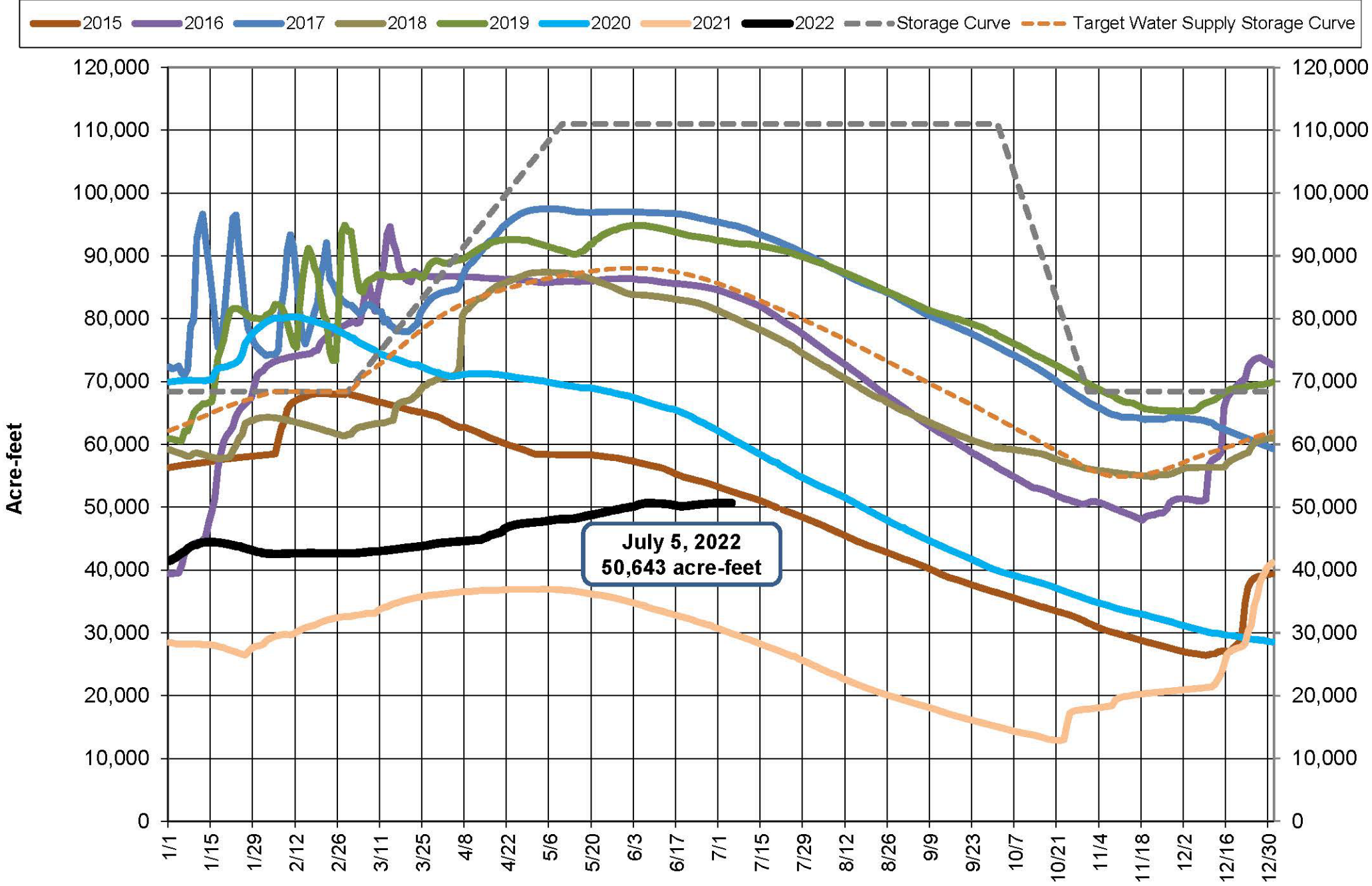
Mike Prinz – Deputy Director Water Reuse



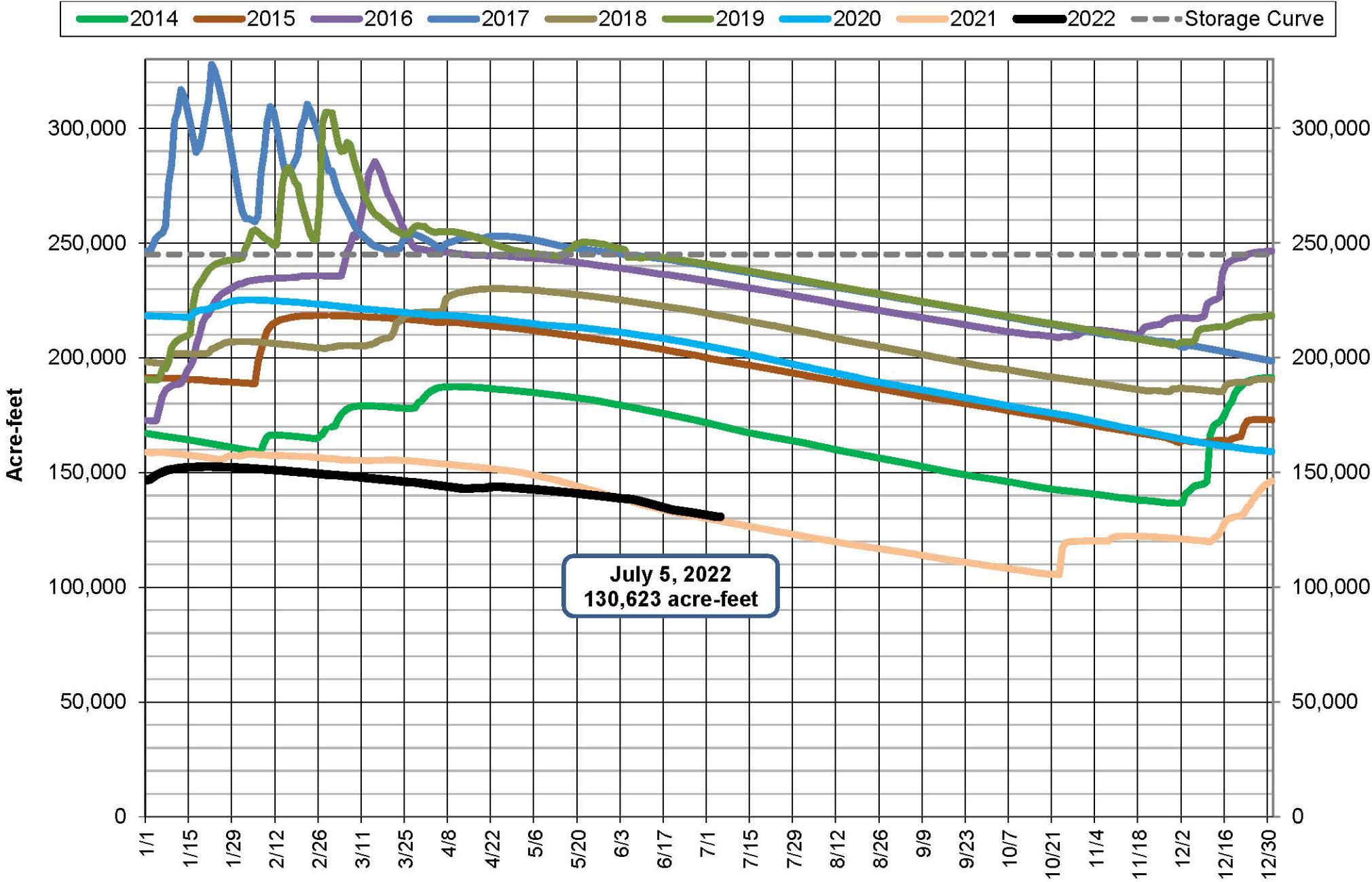
Lake Pillsbury Storage and Target Storage Scenarios



Lake Mendocino Storage



Lake Sonoma Storage



Sonoma Water TUCO - 2022

- Sonoma Water filed TUCP on May 25, 2022
- SWRCB Issued TUCO
- Water year classified as “critical” water supply conditions
 - 25 CFS Upper / 35 CFS Lower
- Contractors ensure 20% reduction in diversions
 - July 1 to October 31, when compared to 2020

Sonoma Water TUCO – 2022

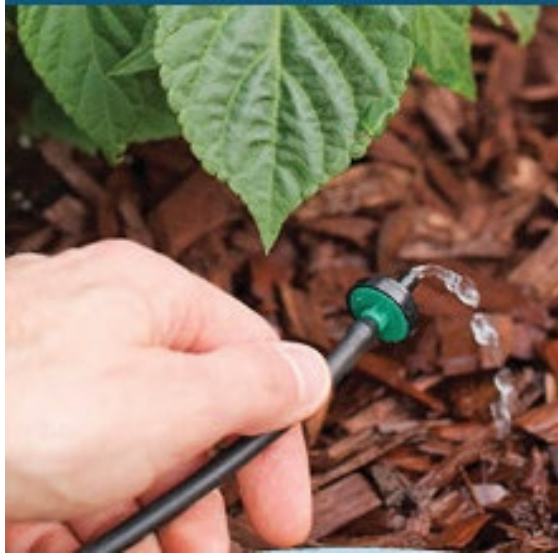
- Summer allocations for Sonoma Water Contractors
 - July 1 – October 31
- Todd Road well online in July
- Monitoring and reporting required by Sonoma Water
 - Flow, diversions, water quality,
- Sonoma Water to ensure 20% reduction in diversions
 - July 1 to October 31, when compared to 2020 **OR** until natural flows return to 125 cfs @ Hacienda gage

Santa Rosa Contractor Allocations Comparison 2021 vs. 2022

- 2021 – WAC unanimously agreed to 20% across the board reduction
- 2022 – Water Shortage Allocation Methodology used
 - Takes into account conservation implementation and demand hardening

Allocations (MGD)	July	August	September	October
2021	19.17	17.63	15.11	15.05
2022	19.32	18.91	17.53	17.27
2022 as % of 2021	101%	107%	116%	115%

Upcoming Workshops: July – August 2022



July & August WaterSmart Workshops

- **Drip Irrigation Basics**
Tuesday, July 12 | 5:30-7 p.m.
- **Tree Management in Drought**
Tuesday, July 19, 2022 | 6 - 7:30 p.m.
- **Laundry to Landscape Graywater**
Tuesday, August 9, 2022 | 5:30-7 p.m.

Sign up at: srcity.org/workshops

Sonoma-Marín Saving Water Partnership Webinar

Savingwaterpartnership.org

go to “news & events”

Zero Waste Water Webinar

Looking for ways to save water?

Join irrigation experts for a Q&A discussion on how to find and fix leaks in your irrigation system.



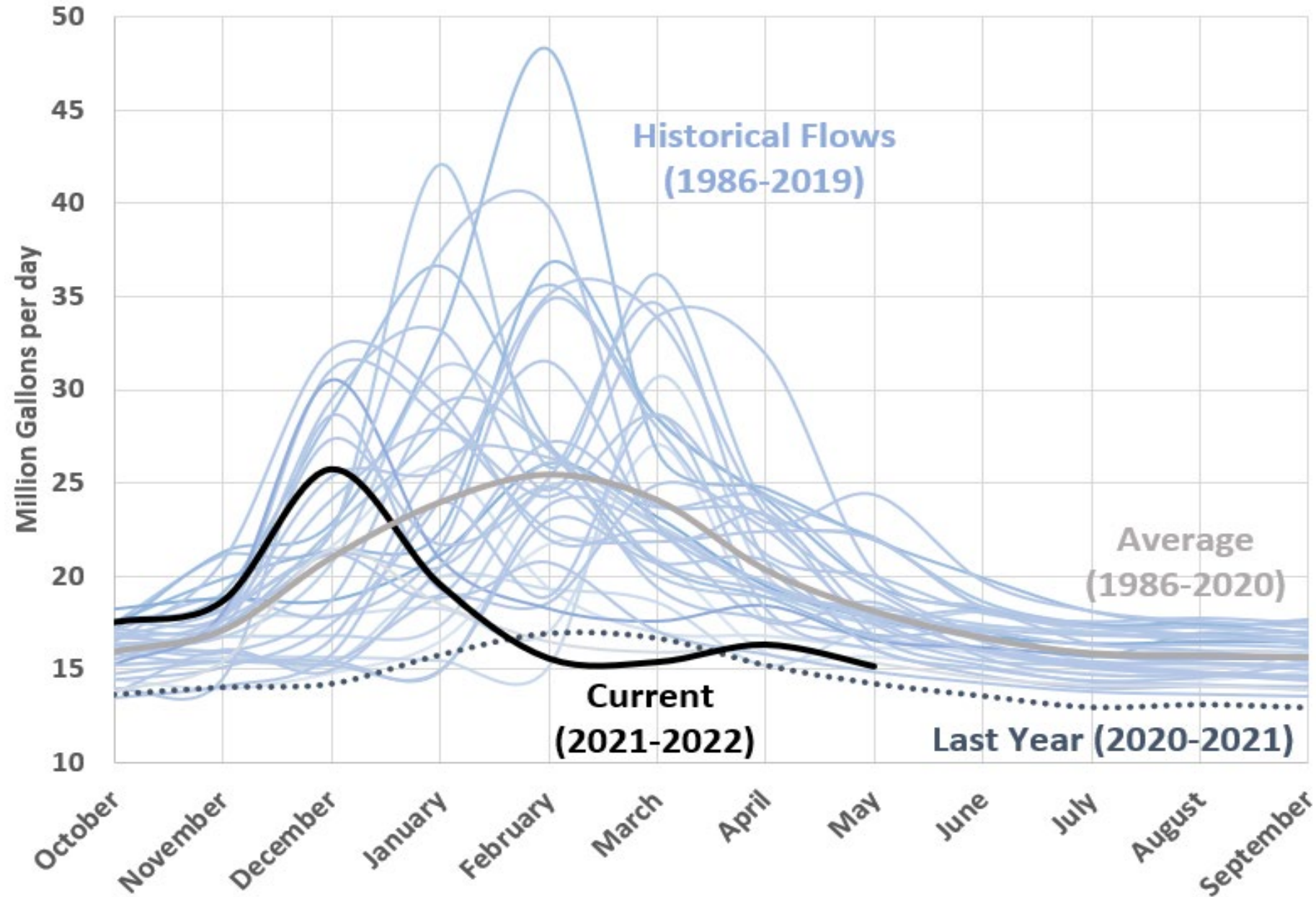
Tuesday, July 26th
6:00-7:30pm
Zoom Webinar



Recycled Water Supply Update



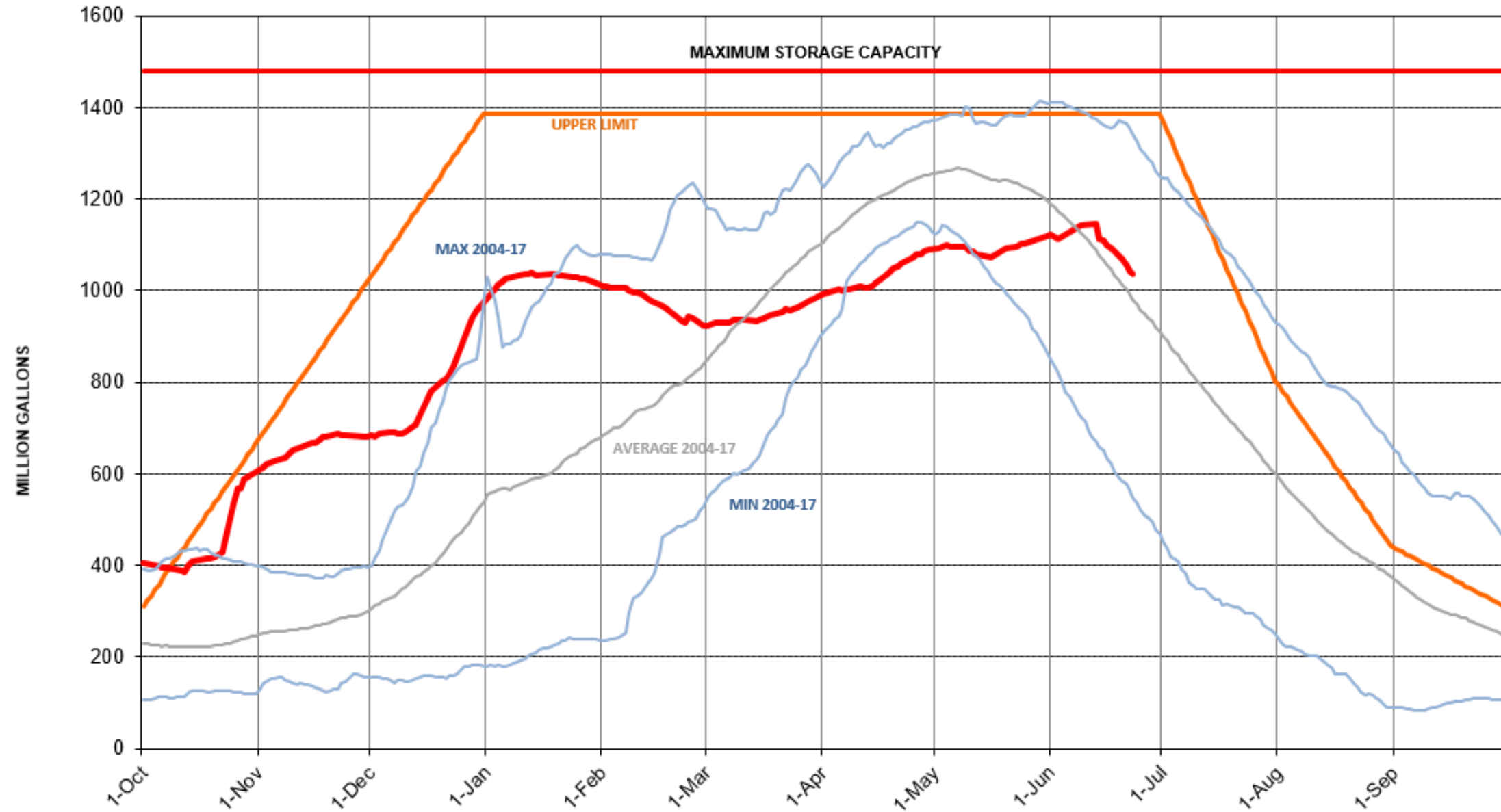
Recycled Water Production



Recycled Water Production

Water Year	Water Produced, BG	Difference, BG
Average	7.0	-
2019	5.8	-1.2
2020	5.3	-1.7
2021*	4.4	-
*To date		

Recycled Water Storage



2022 Estimated Deliveries

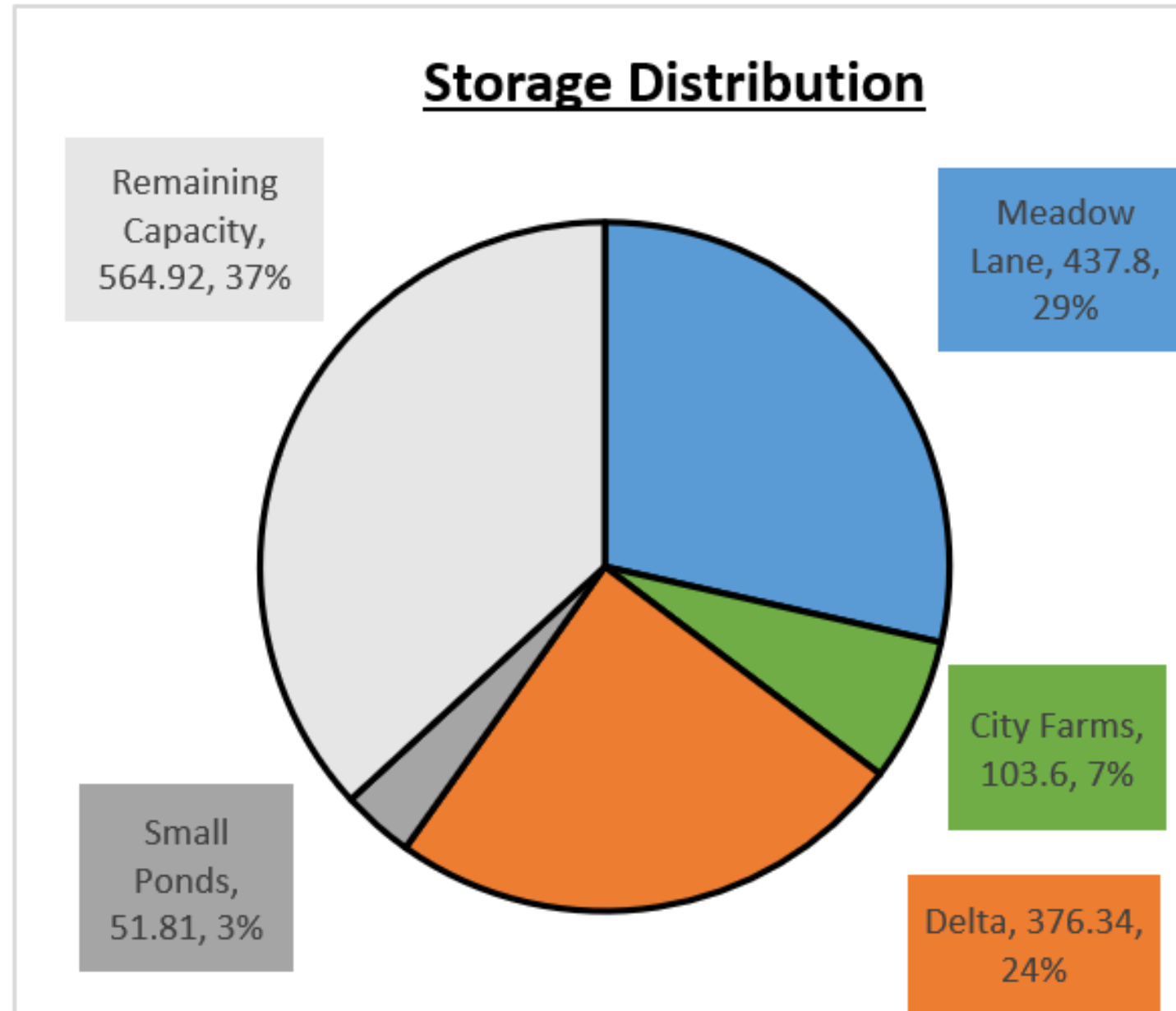
Location	Average (BG)	2021 (BG)	2022 (BG)
Geysers	4.2	4.0	4.2
Ag Irrigation	1.7	0.6	1.1*
Urban Irrigation	0.4	0.4	0.5
Discharge	0.4	0	0
Total	6.7	4.1	5.8

*Includes City Farms

Ag Allotment Update

- 900 MG Allocation in January (~53%)
- Increased additional 50MG in April, 2022
- 2nd All-Users Meeting on April 26, 2022
- Allocations Guaranteed until Sept. 30, 2022
- Delta Pond/Geyzers Connection Project may impact storage
 - Operations to minimize impacts to deliveries
 - Construction begins August 1, 2022

Storage 'Distribution' Status



Questions

