

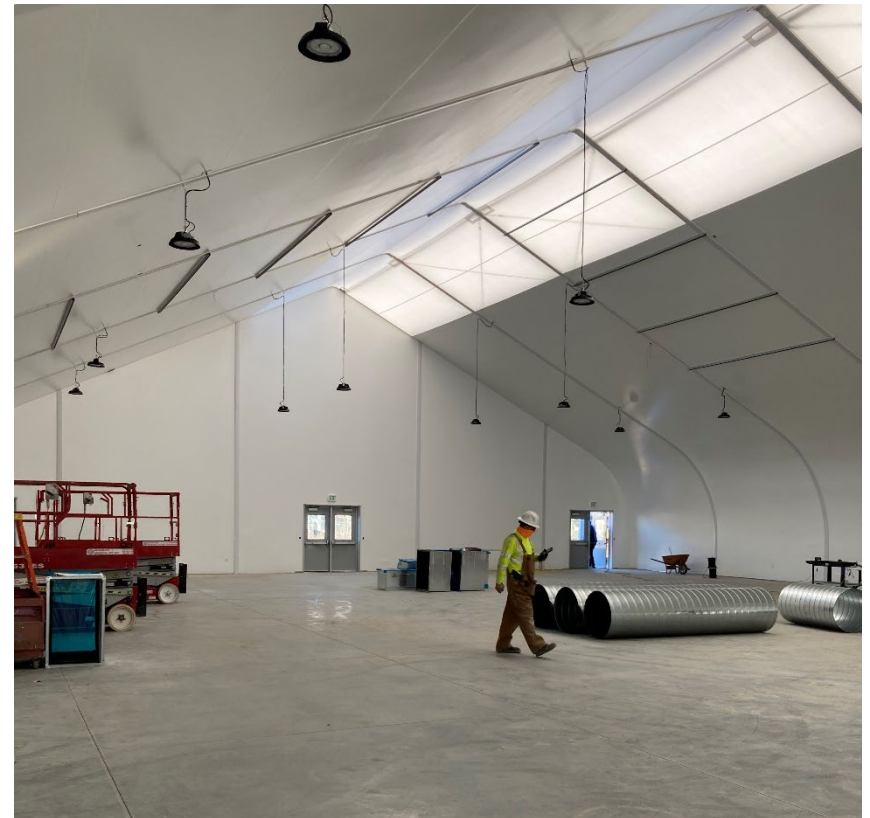


Safe Social Distancing Program

**Staff Briefing
December 15, 2020**

COVID-19 Homeless Emergency Response

- Motel rooms for high-risk sheltered and unsheltered individuals
- Sanitation facilities
- Encampment Resolution
- Emergency Shelter expansion
- Safe Social Distancing Program



Safe Social Distancing Program



- Purpose
 - Create social distancing within existing encampments in response to COVID-19
 - Protect vulnerable population and community at-large
 - Emergency response v. encampment resolution
 - Temporary site – May to November 2020
 - Finley Community Center – Parking lot area



Safe Social Distancing Program

- Up to 68 tents
- Managed, secure site
- Basic Services – Shelter, Sanitary Facilities, Showers, Meals
- On-site Medical Services, Community Referrals, Service/Housing Navigation
- COVID-19 Safety Protocols
- Cost – \$680,000 approximately



Catholic Charities

- 210 people served
 - 94 transitioned to interim housing
 - 6 transitioned to permanent housing
- Lessons Learned
 - Outreach and Engagement Tool
 - Increased Utilization among Underserved Population
 - Linkage to Services
 - Increased COVID-19 Precautions



Public Safety

- Fire
 - 38 medical calls for service
- Police
 - 48 calls for service
- Overall minimal impact