



Attachment 4

Community Pipeline Safety Initiative

Santa Rosa, California

April 2016

WHAT WE'RE DOING



Checking the area above the gas transmission pipeline for trees and structures that pose an emergency access or safety concern.



Helping to ensure immediate access for emergency response crews, and preventing potential damage to the pipe.



Working with our customers and communities where a safety risk has been identified to develop shared solutions.

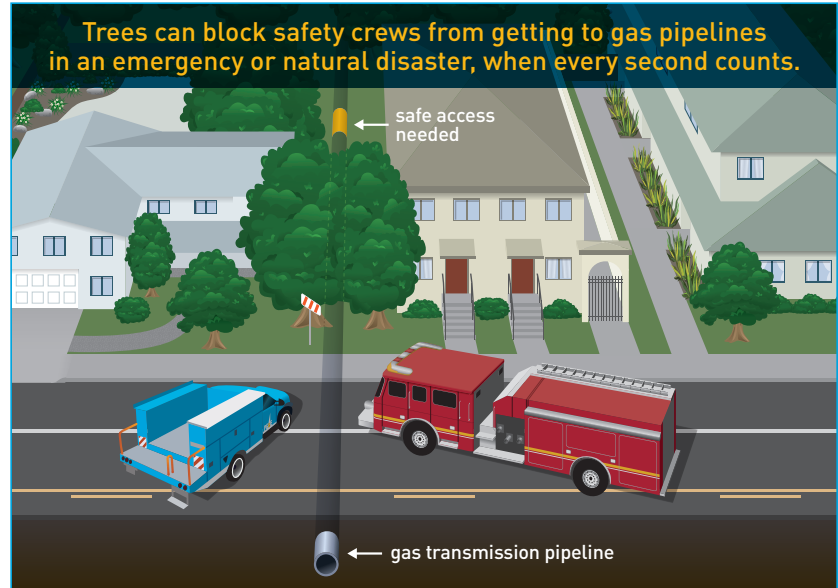


Planting new trees at a safe distance from the pipeline and restoring the area to preserve the natural beauty of our communities.

LEARN MORE

- If you have questions about this upcoming gas safety work, please contact Brian Bottari at **1-707-577-7122** or by email at brian.bottari@pge.com.
- For more information about PG&E's pipeline safety programs, please visit our website at pge.com/GasSafety.

Pacific Gas and Electric Company's (PG&E) top priority is the safety of our customers and communities. As part of this commitment to safety, we are checking the area above and around our natural gas transmission pipelines to help ensure immediate access for emergency response crews and prevent damage to the pipe.



Improving Emergency Access

In an emergency or natural disaster, every second counts and items like structures, trees and bushes located too close to gas pipelines can threaten safety because they can block emergency access to the pipeline. They can also prevent our crews from performing important safety and maintenance work.

Working Together

PG&E is working with customers and community leaders to share what we know about the safety risks and, together, develop plans that preserve the unique characters of our communities while protecting public safety. When a tree or structure needs to be replaced for safety reasons, we work together to replace the item at a safe distance from the pipeline and restore the area – all at PG&E's expense. Please note that we will not move forward with any planned work on private property without a mutual agreement in place.



Be Safe. Dig Safe. Damage from excavation is the most common cause of pipeline accidents. Before you begin any landscaping work, always call 811 at least two business days in advance. With one free call to 811, PG&E will send a crew to mark our underground gas and electric facilities before you begin work, helping you plan a safe project.