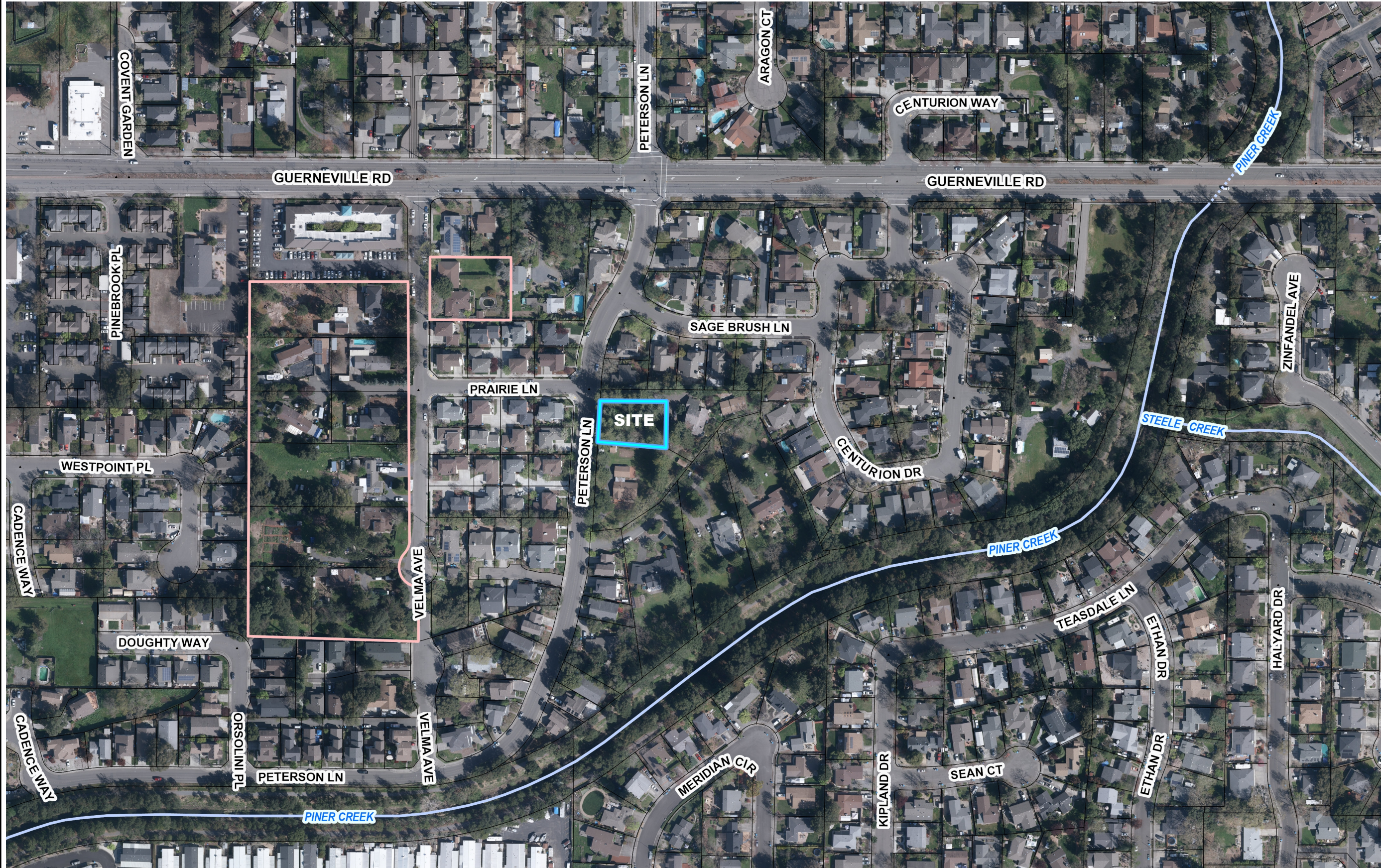


**RECEIVED**

By E07081 at 12:00 pm, Apr 07, 2021

# Attachment 6



- Legend**
- City Limits
  - Public Service Labels
  - Rail Road
  - Lakes
  - Creeks
    - Unknown
    - Surface
    - Subsurface
  - Major Roads (1201-4800)
  - Parks
    - STATE OR REGIONAL
    - Community Park
    - Neighborhood Park
    - Trail Park
    - Open Space
    - Special Purpose Park
    - Recreational Center Site
    - Civic Site/ Public Area
    - Beach
    - Historic
  - Parcels

## NEIGHBORHOOD CONTEXT MAP

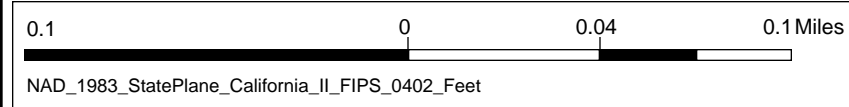
**1434 PETERSON LANE ~ ST. ROSA**

**APN 036-730-023**

1: 2,400



**Notes**



This map is a user generated static output from an Internet mapping site and is for reference only. Data layers that appear on this map may or may not be accurate, current, or otherwise reliable.  
**THIS MAP IS NOT TO BE USED FOR NAVIGATION**