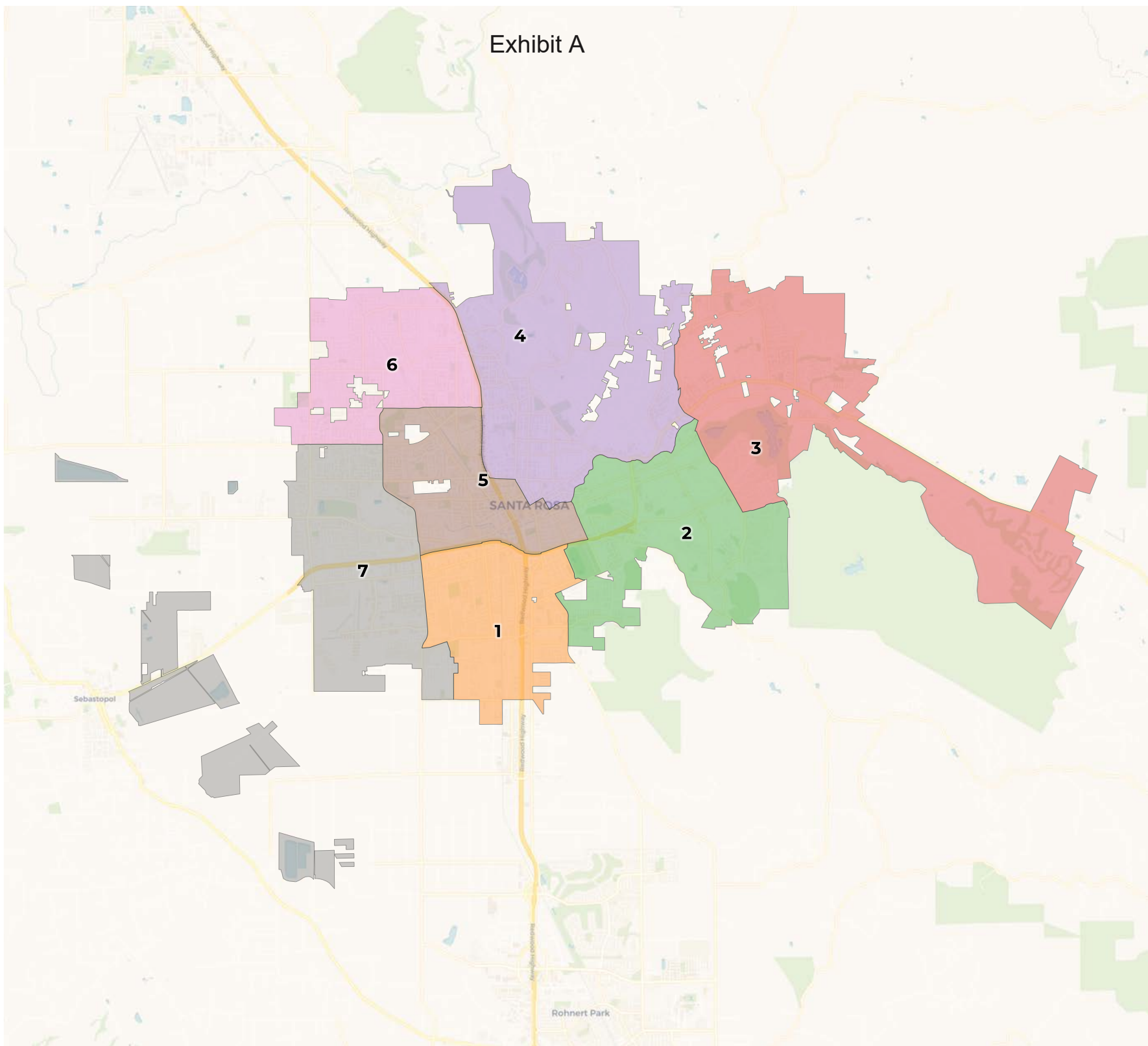


Exhibit A



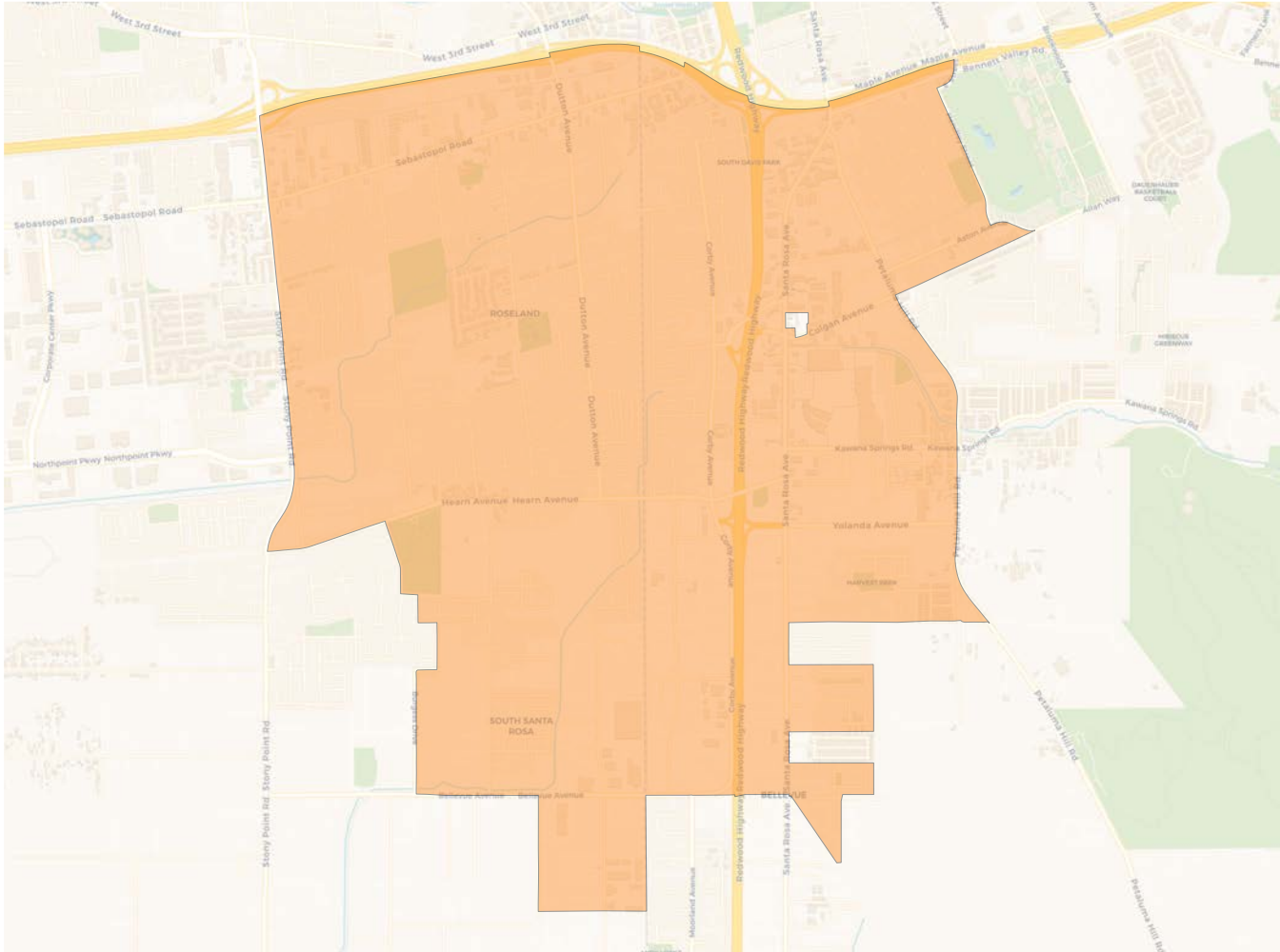
2020 Census

	1	2	3	4	5	6	7
Population	25,289	26,158	25,677	25,296	24,333	25,500	26,262
Deviation	-213	656	175	-206	-1,169	-2	760
Deviation %	-0.8%	2.6%	0.7%	-0.8%	-4.6%	-0.0%	3.0%
Other	7,309	18,518	19,947	19,161	10,771	13,526	13,528
Other %	28.9%	70.8%	77.7%	75.7%	44.3%	53.0%	51.5%
Latino	16,134	5,667	3,950	4,416	11,588	9,630	9,856
Latino %	63.8%	21.7%	15.4%	17.5%	47.6%	37.8%	37.5%
Asian	1,316	1,470	1,462	1,272	1,260	1,783	2,101
Asian %	5.2%	5.6%	5.7%	5.0%	5.2%	7.0%	8.0%
Black	530	503	318	447	714	561	777
Black %	2.1%	1.9%	1.2%	1.8%	2.9%	2.2%	3.0%

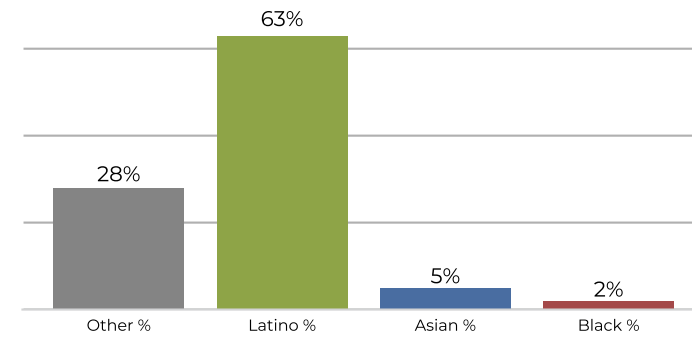
Citizen Voting Age Population (CVAP)

	1	2	3	4	5	6	7
Total CVAP	12,727	19,448	19,151	20,756	15,156	17,081	17,605
Other CVAP	6,377	15,877	16,518	17,206	10,459	11,856	11,589
Other CVAP %	50.1%	81.6%	86.3%	82.9%	69.0%	69.4%	65.8%
Latino CVAP	4,994	2,075	1,622	2,235	3,686	4,055	4,310
Latino CVAP %	39.2%	10.7%	8.5%	10.8%	24.3%	23.7%	24.5%
Asian CVAP	767	1,125	824	870	729	700	1,271
Asian CVAP %	6.0%	5.8%	4.3%	4.2%	4.8%	4.1%	7.2%
Black CVAP	589	371	187	445	282	470	435
Black CVAP %	4.6%	1.9%	1.0%	2.1%	1.9%	2.8%	2.5%

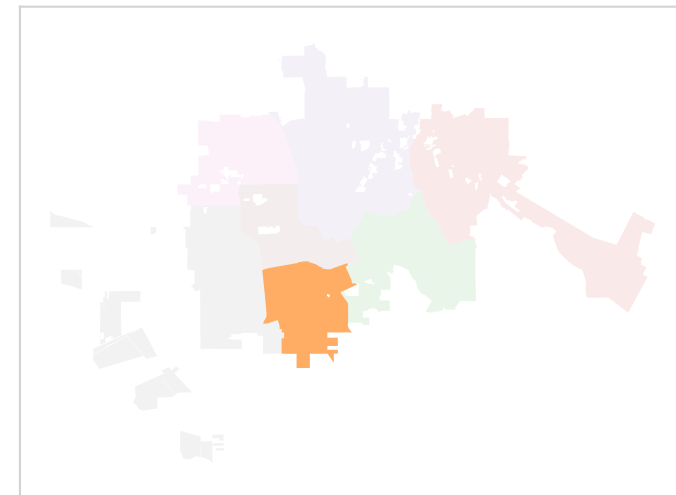
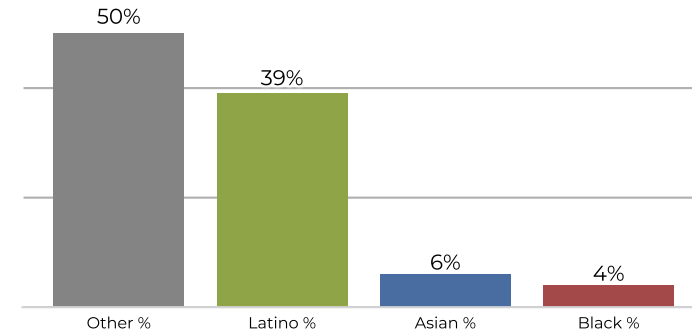
District 1



2020 Census

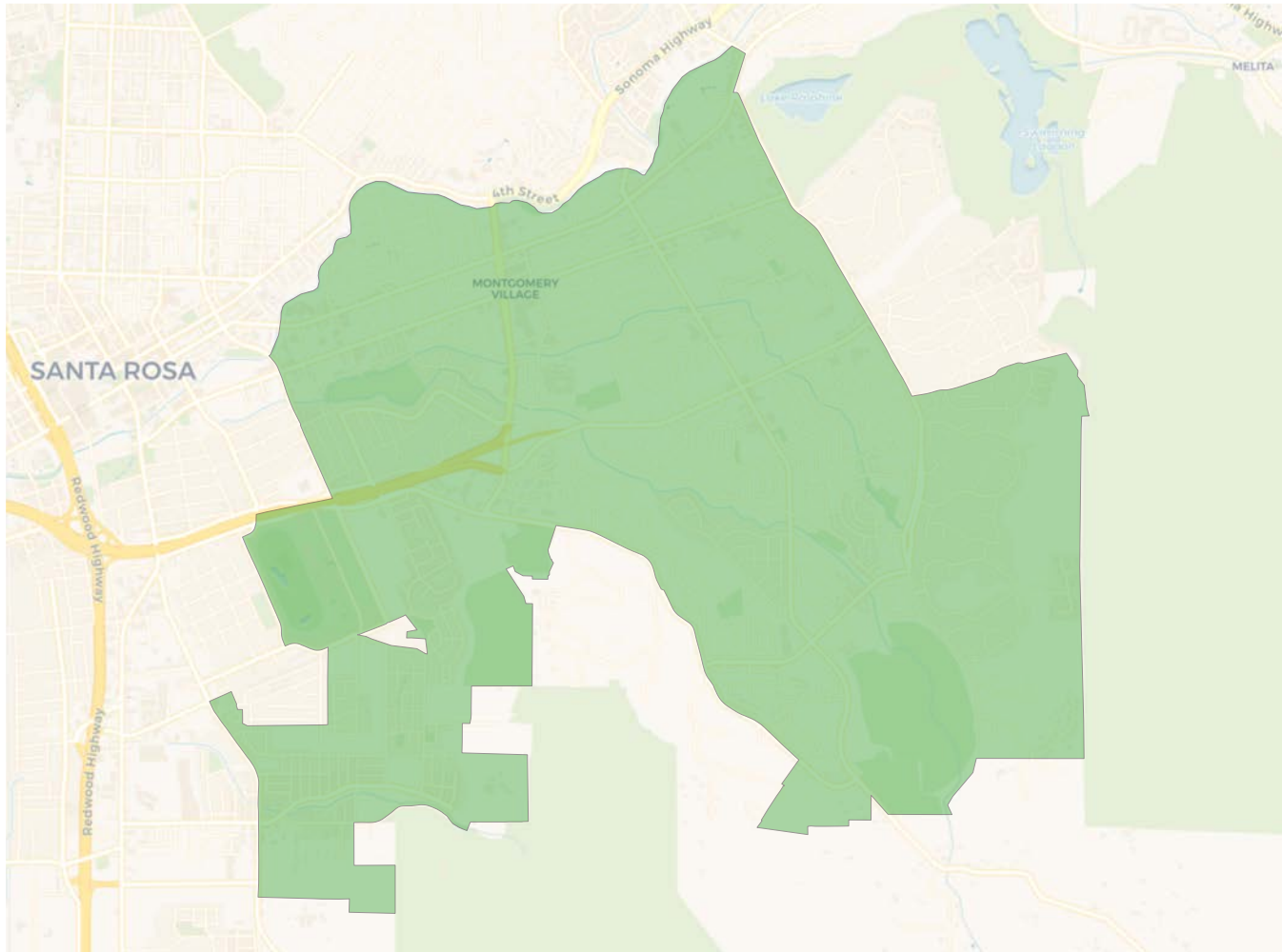


Citizen Voting Age Population

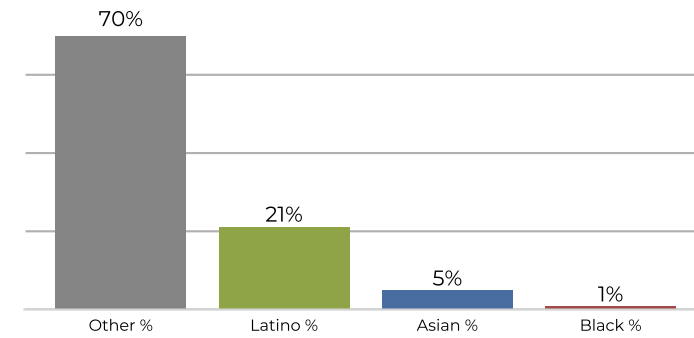


Population	Deviation	Deviation %	Other	Other %	Latino	Latino %	Asian	Asian %	Black	Black %
25,289	-213	-0.8%	7,309	28.9%	16,134	63.8%	1,316	5.2%	530	2.1%
Total CVAP	Other CVAP	Other CVAP %	Latino CVAP	Latino CVAP %	Asian CVAP	Asian CVAP %	Black CVAP	Black CVAP %		
12,727	6,377	50.1%	4,994	39.2%	767	6.0%	589	4.6%		

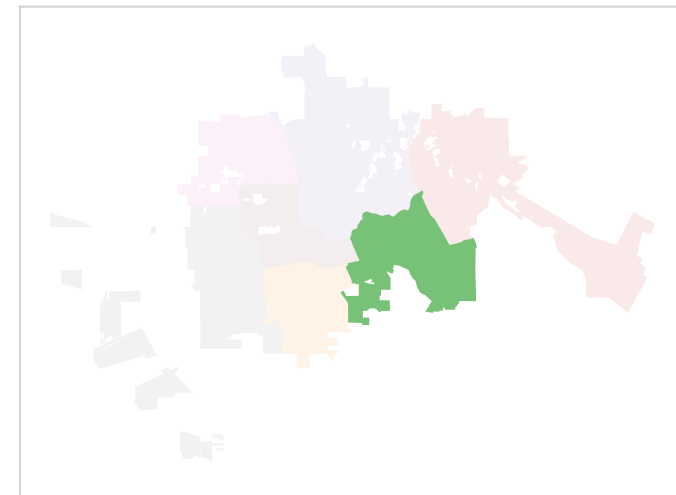
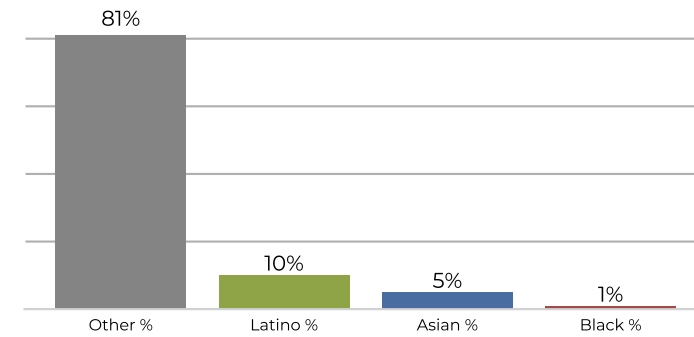
District 2



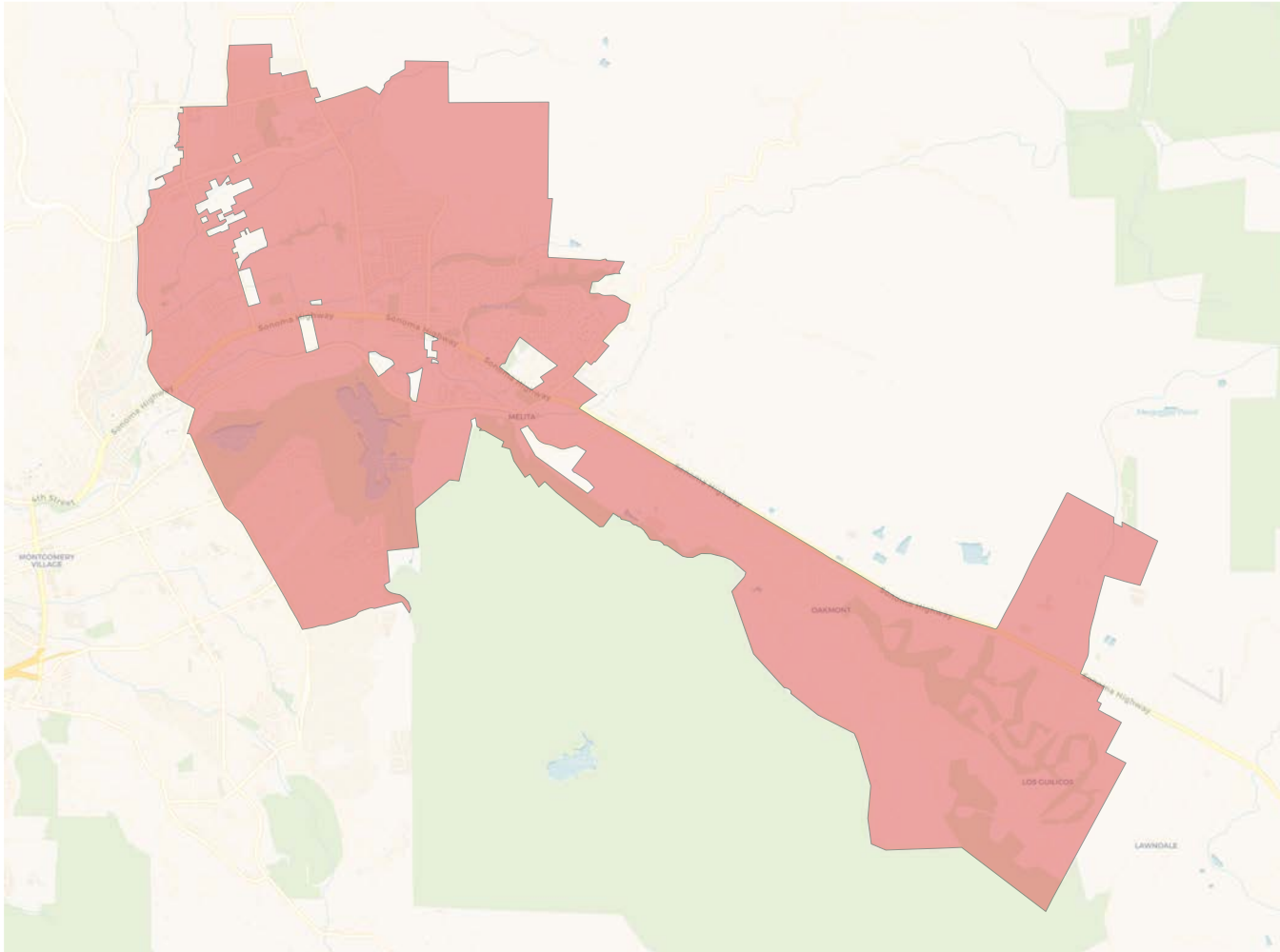
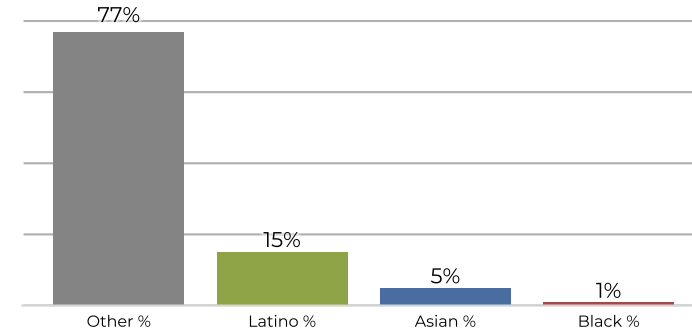
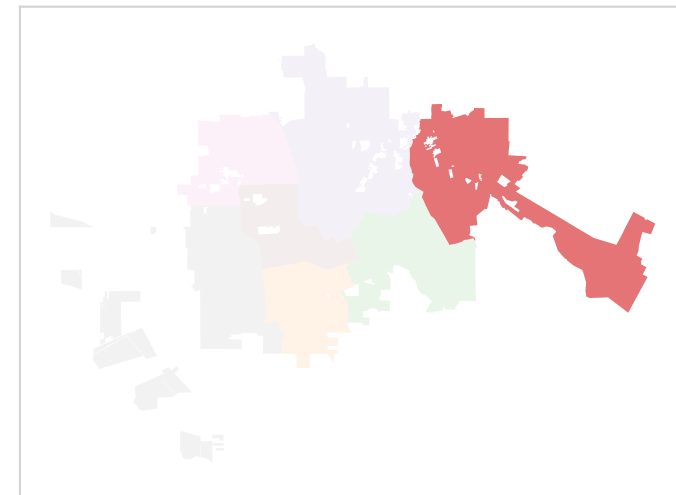
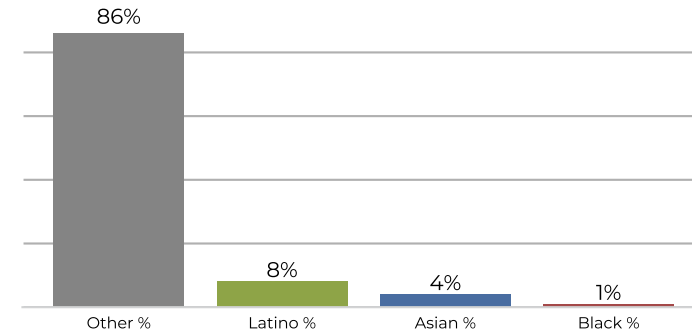
2020 Census



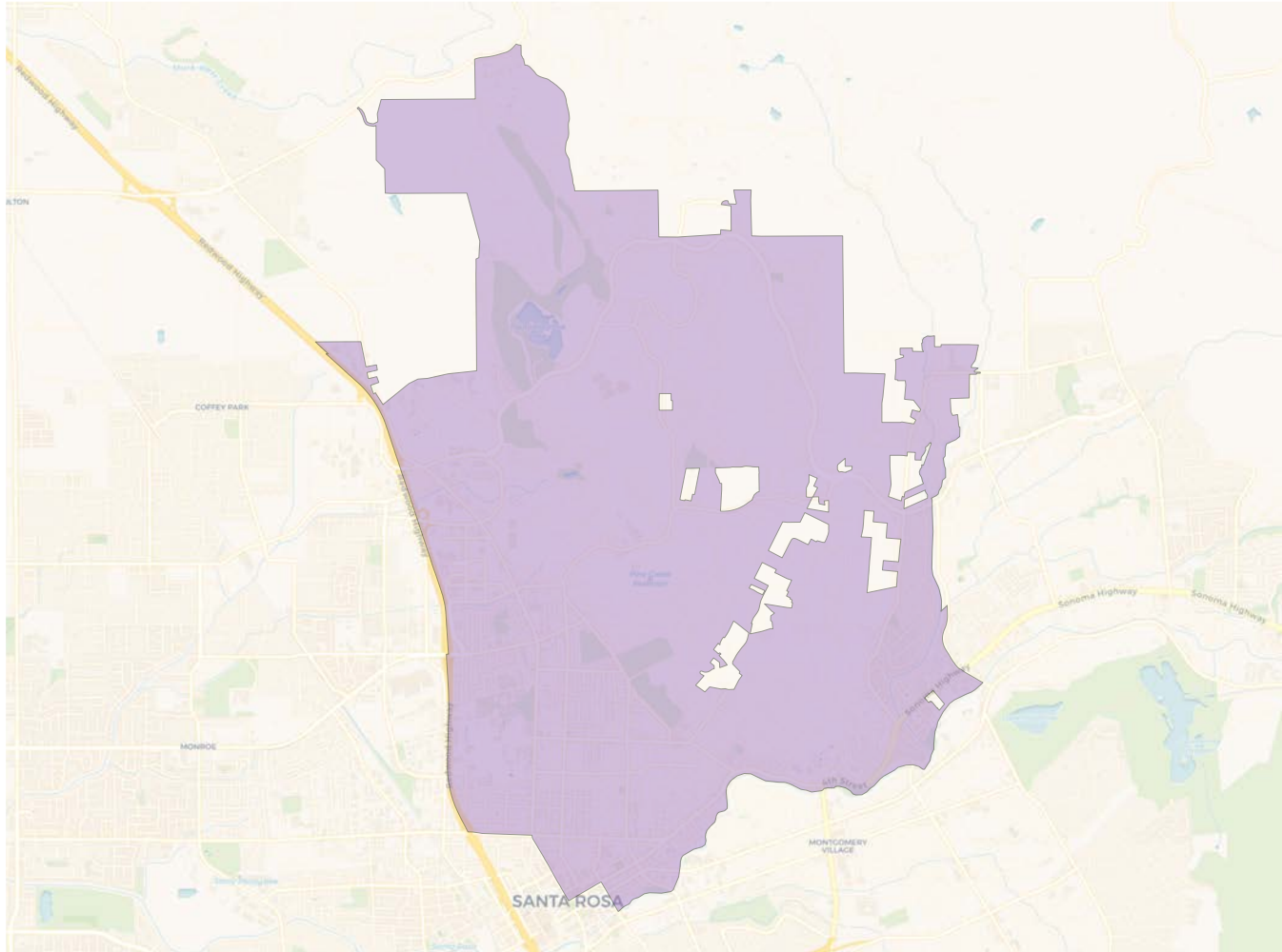
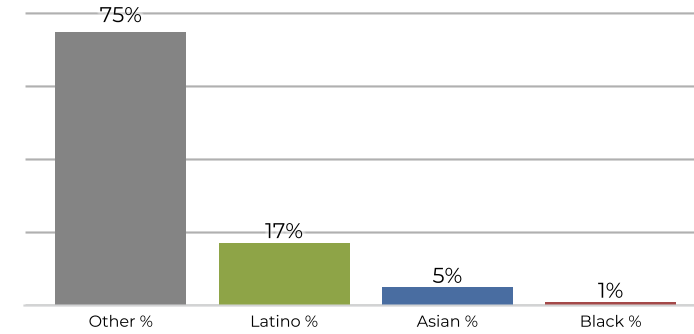
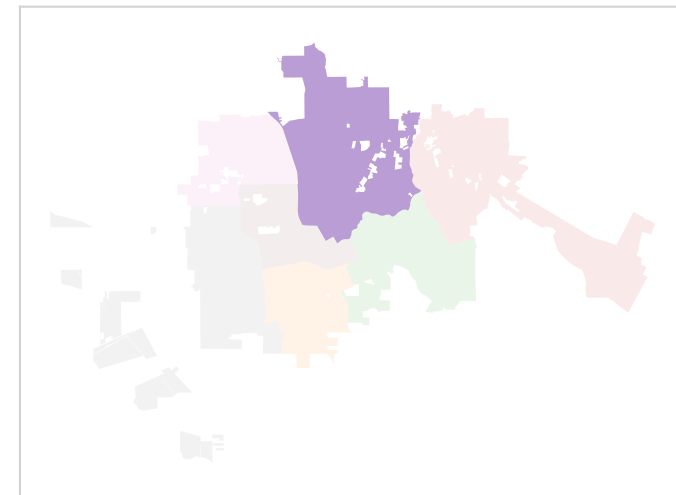
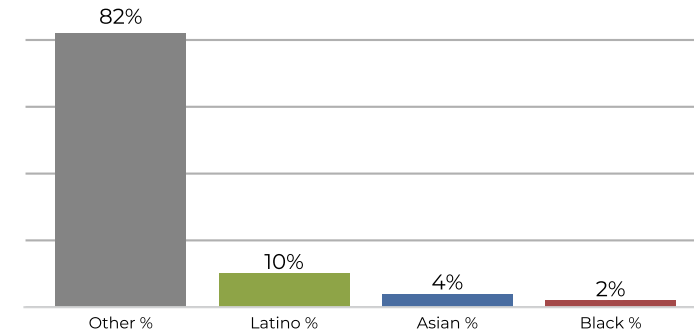
Citizen Voting Age Population



Population	Deviation	Deviation %	Other	Other %	Latino	Latino %	Asian	Asian %	Black	Black %
26,158	656	2.6%	18,518	70.8%	5,667	21.7%	1,470	5.6%	503	1.9%
Total CVAP	Other CVAP	Other CVAP %	Latino CVAP	Latino CVAP %	Asian CVAP	Asian CVAP %	Black CVAP	Black CVAP %		
19,448	15,877	81.6%	2,075	10.7%	1,125	5.8%	371	1.9%		

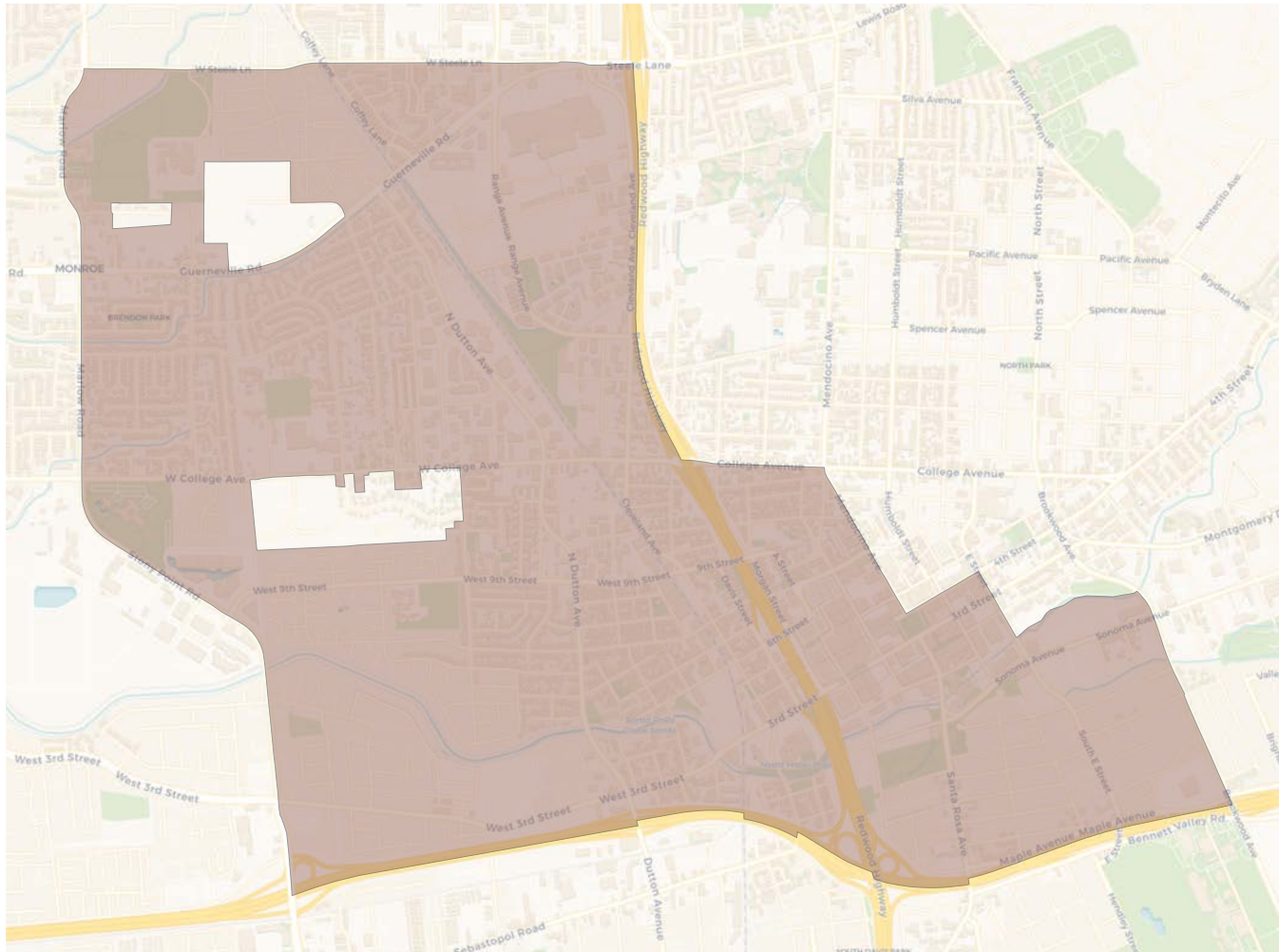
District 3

2020 Census

Citizen Voting Age Population


Population	Deviation	Deviation %	Other	Other %	Latino	Latino %	Asian	Asian %	Black	Black %
25,677	175	0.7%	19,947	77.7%	3,950	15.4%	1,462	5.7%	318	1.2%
Total CVAP	Other CVAP	Other CVAP %	Latino CVAP	Latino CVAP %	Asian CVAP	Asian CVAP %	Black CVAP	Black CVAP %		
19,151	16,518	86.3%	1,622	8.5%	824	4.3%	187	1.0%		

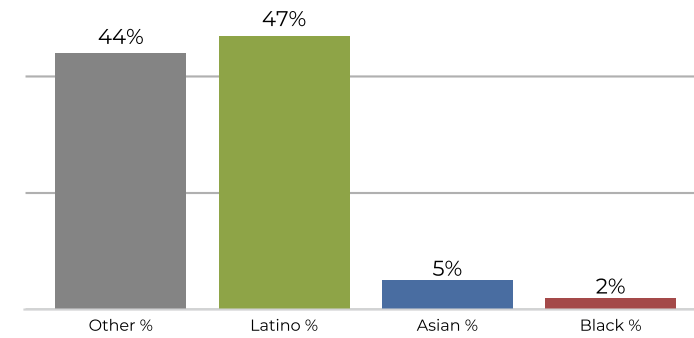
District 4

2020 Census

Citizen Voting Age Population


Population	Deviation	Deviation %	Other	Other %	Latino	Latino %	Asian	Asian %	Black	Black %
25,296	-206	-0.8%	19,161	75.7%	4,416	17.5%	1,272	5.0%	447	1.8%
Total CVAP	Other CVAP	Other CVAP %	Latino CVAP	Latino CVAP %	Asian CVAP	Asian CVAP %	Black CVAP	Black CVAP %		
20,756	17,206	82.9%	2,235	10.8%	870	4.2%	445	2.1%		

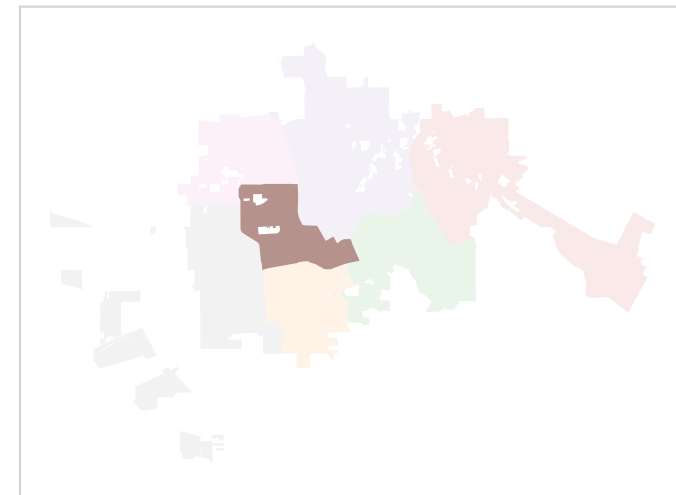
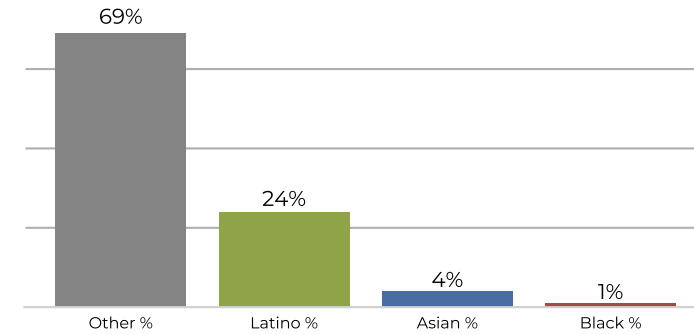
District 5



2020 Census

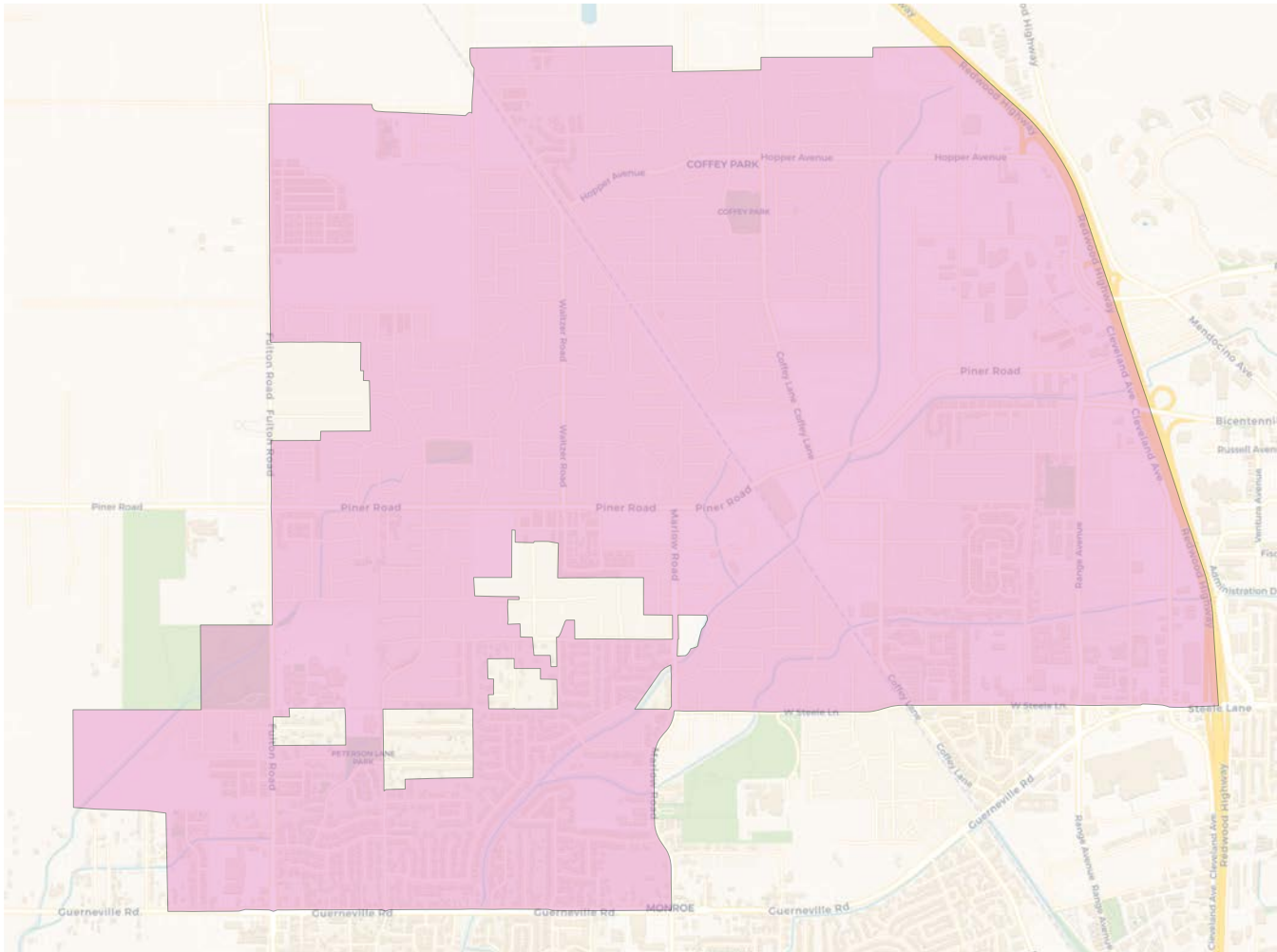


Citizen Voting Age Population

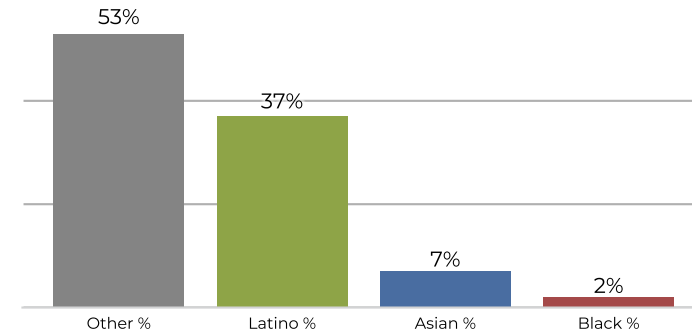


Population	Deviation	Deviation %	Other	Other %	Latino	Latino %	Asian	Asian %	Black	Black %
24,333	-1,169	-4.6%	10,771	44.3%	11,588	47.6%	1,260	5.2%	714	2.9%
Total CVAP	Other CVAP	Other CVAP %	Latino CVAP	Latino CVAP %	Asian CVAP	Asian CVAP %	Black CVAP	Black CVAP %		
15,156	10,459	69.0%	3,686	24.3%	729	4.8%	282	1.9%		

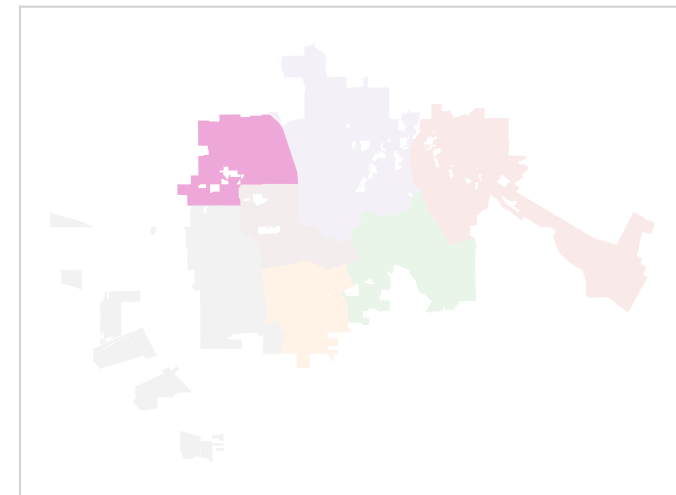
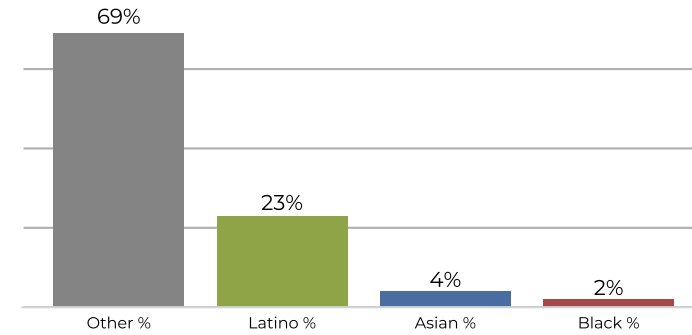
District 6



2020 Census

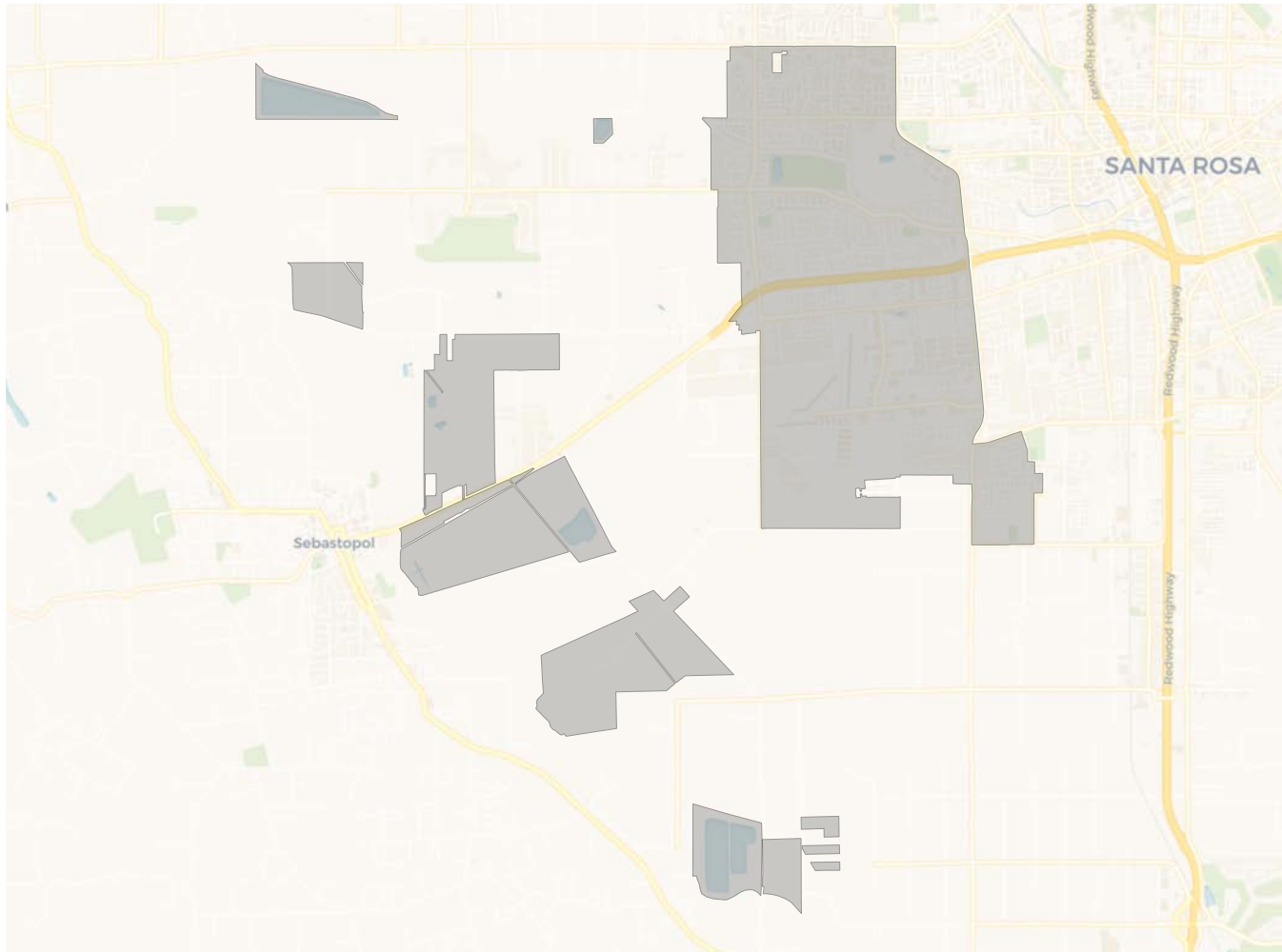


Citizen Voting Age Population

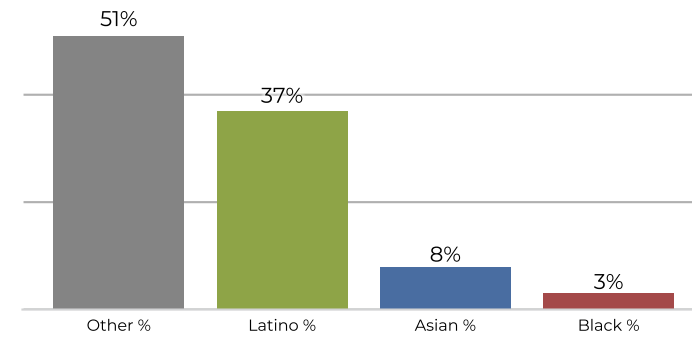


Population	Deviation	Deviation %	Other	Other %	Latino	Latino %	Asian	Asian %	Black	Black %
25,500	-2	-0.0%	13,526	53.0%	9,630	37.8%	1,783	7.0%	561	2.2%
Total CVAP	Other CVAP	Other CVAP %	Latino CVAP	Latino CVAP %	Asian CVAP	Asian CVAP %	Black CVAP	Black CVAP %		
17,081	11,856	69.4%	4,055	23.7%	700	4.1%	470	2.8%		

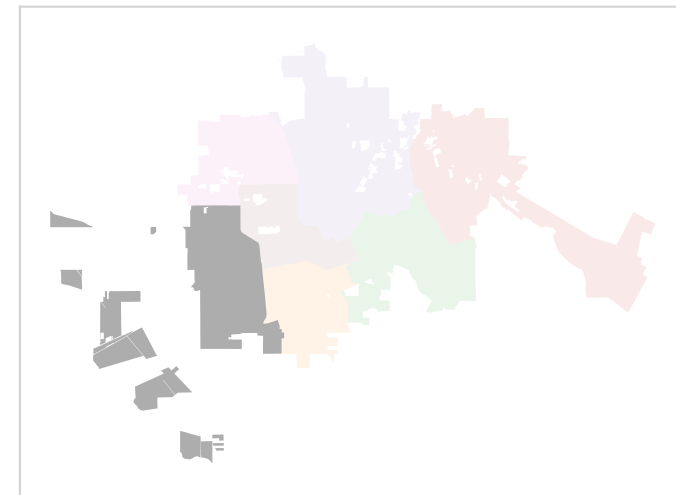
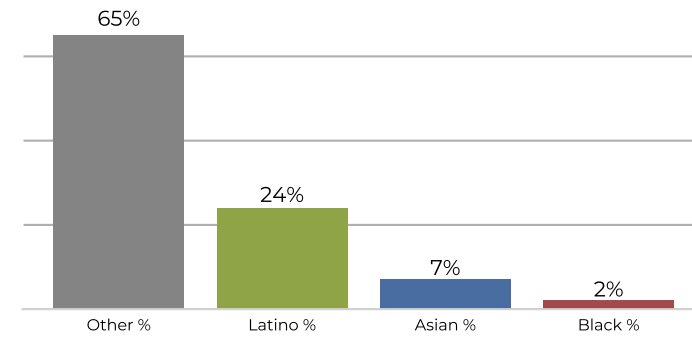
District 7



2020 Census



Citizen Voting Age Population



Population	Deviation	Deviation %	Other	Other %	Latino	Latino %	Asian	Asian %	Black	Black %
26,262	760	3.0%	13,528	51.5%	9,856	37.5%	2,101	8.0%	777	3.0%
Total CVAP	Other CVAP	Other CVAP %	Latino CVAP	Latino CVAP %	Asian CVAP	Asian CVAP %	Black CVAP	Black CVAP %		
17,605	11,589	65.8%	4,310	24.5%	1,271	7.2%	435	2.5%		