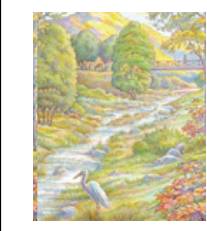


Attachment 9



Planning Watershed Area: Brush Creek (Map 1 of 2)

- | | |
|---|---|
| <p>Creeks</p> <ul style="list-style-type: none"> — Natural — Modified — Modified-Natural --- Culvert R R Proposed Restoration ● Endpoints of Creek Reach <p>Ownership/Land Use</p> <ul style="list-style-type: none"> City Properties Sonoma County Water Agency Other Public Entities School Properties Existing Parks/Open Space City Limits Urban Growth Boundary <p>Existing Access Roads/Trails</p> <ul style="list-style-type: none"> Paved Trail Unpaved Access Road/Trail Dirt/Soft Surface Closed Access Road ✦ Existing Trail Bridge ⊙ Existing Undercrossing ▲ Existing Off-Street Entry | <p>Existing Bikeways</p> <ul style="list-style-type: none"> - - - Class 1 (Path separate from traffic) - - - Class 2 (Lane painted on street) - - - Class 3 (Signed route) <p>Proposed Trails and Connections</p> <ul style="list-style-type: none"> --- Planned Street Extension --- Planned Paved Trail --- SMART Trail P P Pave Existing Access Road/Trail ○ ○ Open Currently Closed Access Road ✦ Planned Trail Bridge ⊙ Planned Undercrossing ▲ Planned Off-Street Entry <p>Planned Open Space/Parks</p> <ul style="list-style-type: none"> ▲ Planned Community Park ▲ Planned Neighborhood Park ● Potential Public Plaza and Gathering Space |
|---|---|
- This map is part of the City of Santa Rosa Citywide Creek Master Plan, 2013. Based on data from the Citywide Creek Master Plan (2007). Updated in 2013. City of Santa Rosa GIS from Asset Management and Information Technology, 2011 Aerials are shown.
- Map Produced by City of Santa Rosa, Stormwater and Creeks Division. Date: 5/24/2013



0 1,000 2,000 Feet

