

CONSULTANTS

SEAL

Railroad Square Village, LLC

DeTurk Winery Village Apartments

806 Donahue Street/ 8 West 9th Street
 Santa Rosa, CA 95401

No. Description Date

DATE: 10/13/16

PROJECT NUMBER: 15-043

PROJECT PHASE: SD

DRAWN BY: KO/ ZS

CHECKED BY: KO

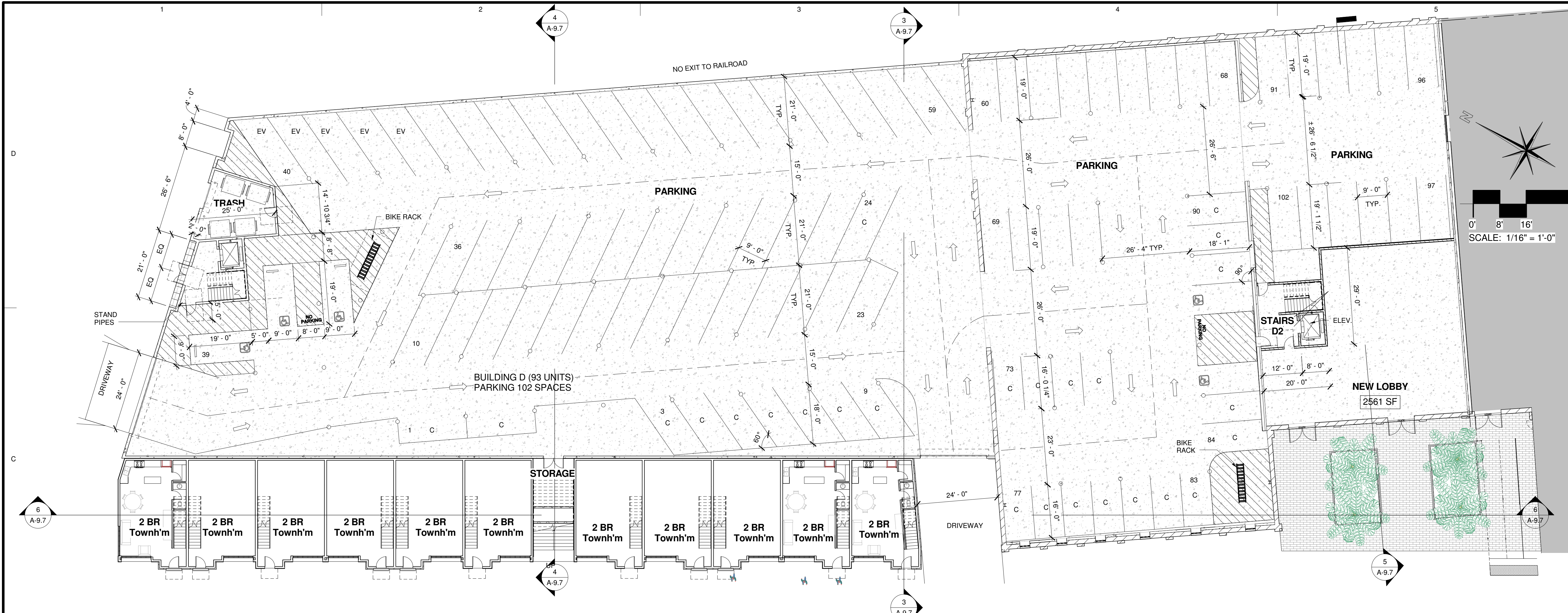
Copyright 2016
 O'Malley Wilson Westphal, Inc.

SHEET TITLE

BUILDING "D" FIRST FLOOR PLAN

SHEET NUMBER

A-9.1



Area Schedule (UNITS AREA) BUILDING D

| UNIT NAME | AREA | TYPE | UNIT TYPE | FLOOR |
|-----------|--------|------|-----------|-------|
| 212 | 816 SF | 4 | 1 BEDROOM | 2ND |
| 301 | 837 SF | 4 | 1 BEDROOM | 3RD |
| 313 | 762 SF | 3 | 1 BEDROOM | 3RD |
| 314 | 769 SF | 3 | 1 BEDROOM | 3RD |
| 315 | 772 SF | 3 | 1 BEDROOM | 3RD |
| 316 | 761 SF | 3 | 1 BEDROOM | 3RD |
| 317 | 775 SF | 3 | 1 BEDROOM | 3RD |
| 318 | 775 SF | 3 | 1 BEDROOM | 3RD |
| 319 | 771 SF | 3 | 1 BEDROOM | 3RD |
| 320 | 774 SF | 3 | 1 BEDROOM | 3RD |
| 321 | 774 SF | 3 | 1 BEDROOM | 3RD |
| 322 | 774 SF | 3 | 1 BEDROOM | 3RD |
| 323 | 774 SF | 3 | 1 BEDROOM | 3RD |
| 324 | 774 SF | 3 | 1 BEDROOM | 3RD |
| 325 | 775 SF | 3 | 1 BEDROOM | 3RD |
| 326 | 774 SF | 3 | 1 BEDROOM | 3RD |
| 327 | 775 SF | 3 | 1 BEDROOM | 3RD |
| 328 | 776 SF | 3 | 1 BEDROOM | 3RD |
| 329 | 775 SF | 3 | 1 BEDROOM | 3RD |
| 330 | 774 SF | 3 | 1 BEDROOM | 3RD |
| 331 | 774 SF | 3 | 1 BEDROOM | 3RD |
| 401 | 755 SF | 3 | 1 BEDROOM | 4TH |
| 413 | 761 SF | 3 | 1 BEDROOM | 4TH |
| 414 | 763 SF | 3 | 1 BEDROOM | 4TH |
| 415 | 763 SF | 3 | 1 BEDROOM | 4TH |
| 416 | 762 SF | 3 | 1 BEDROOM | 4TH |
| 417 | 757 SF | 3 | 1 BEDROOM | 4TH |
| 418 | 759 SF | 3 | 1 BEDROOM | 4TH |
| 419 | 759 SF | 3 | 1 BEDROOM | 4TH |
| 420 | 758 SF | 3 | 1 BEDROOM | 4TH |
| 421 | 763 SF | 3 | 1 BEDROOM | 4TH |
| 422 | 763 SF | 3 | 1 BEDROOM | 4TH |
| 423 | 763 SF | 3 | 1 BEDROOM | 4TH |
| 424 | 764 SF | 3 | 1 BEDROOM | 4TH |
| 425 | 764 SF | 3 | 1 BEDROOM | 4TH |
| 426 | 764 SF | 3 | 1 BEDROOM | 4TH |
| 427 | 764 SF | 3 | 1 BEDROOM | 4TH |
| 428 | 765 SF | 3 | 1 BEDROOM | 4TH |
| 429 | 764 SF | 3 | 1 BEDROOM | 4TH |

Area Schedule (UNITS AREA) BUILDING D

| UNIT NAME | AREA | TYPE | UNIT TYPE | FLOOR |
|-----------|-----------|------|-----------|-------|
| 430 | 763 SF | 3 | 1 BEDROOM | 4TH |
| 431 | 764 SF | 3 | 1 BEDROOM | 4TH |
| 1 BEDROOM | 31,570 SF | | | |
| 213 | 805 SF | 4 | 2 BEDROOM | 2ND |
| 214 | 805 SF | 4 | 2 BEDROOM | 2ND |
| 215 | 806 SF | 4 | 2 BEDROOM | 2ND |
| 216 | 803 SF | 4 | 2 BEDROOM | 2ND |
| 217 | 807 SF | 4 | 2 BEDROOM | 2ND |
| 218 | 806 SF | 4 | 2 BEDROOM | 2ND |
| 219 | 804 SF | 4 | 2 BEDROOM | 2ND |
| 220 | 804 SF | 4 | 2 BEDROOM | 2ND |
| 221 | 806 SF | 4 | 2 BEDROOM | 2ND |
| 222 | 806 SF | 4 | 2 BEDROOM | 2ND |
| 223 | 806 SF | 4 | 2 BEDROOM | 2ND |
| 224 | 805 SF | 4 | 2 BEDROOM | 2ND |
| 225 | 808 SF | 4 | 2 BEDROOM | 2ND |
| 226 | 820 SF | 4 | 2 BEDROOM | 2ND |
| 227 | 805 SF | 4 | 2 BEDROOM | 2ND |
| 228 | 807 SF | 4 | 2 BEDROOM | 2ND |
| 229 | 836 SF | 4 | 2 BEDROOM | 2ND |
| 230 | 823 SF | 4 | 2 BEDROOM | 2ND |
| 231 | 835 SF | 4 | 2 BEDROOM | 2ND |
| 302 | 989 SF | 5 | 2 BEDROOM | 3RD |
| 303 | 949 SF | 5 | 2 BEDROOM | 3RD |
| 304 | 949 SF | 5 | 2 BEDROOM | 3RD |
| 305 | 990 SF | 5 | 2 BEDROOM | 3RD |
| 306 | 947 SF | 5 | 2 BEDROOM | 3RD |
| 307 | 947 SF | 5 | 2 BEDROOM | 3RD |
| 308 | 990 SF | 5 | 2 BEDROOM | 3RD |
| 309 | 949 SF | 5 | 2 BEDROOM | 3RD |
| 310 | 949 SF | 5 | 2 BEDROOM | 3RD |
| 311 | 988 SF | 5 | 2 BEDROOM | 3RD |
| 312 | 948 SF | 5 | 2 BEDROOM | 3RD |
| 402 | 897 SF | 4 | 2 BEDROOM | 4TH |
| 403 | 877 SF | 4 | 2 BEDROOM | 4TH |
| 404 | 902 SF | 5 | 2 BEDROOM | 4TH |
| 405 | 880 SF | 4 | 2 BEDROOM | 4TH |
| 406 | 878 SF | 4 | 2 BEDROOM | 4TH |
| 407 | 878 SF | 4 | 2 BEDROOM | 4TH |

Area Schedule (UNITS AREA) BUILDING D

| UNIT NAME | AREA | TYPE | UNIT TYPE | FLOOR |
|----------------------------|-----------|------|----------------------------|-------|
| 408 | 881 SF | 4 | 2 BEDROOM | 4TH |
| 409 | 904 SF | 5 | 2 BEDROOM | 4TH |
| 410 | 877 SF | 4 | 2 BEDROOM | 4TH |
| 411 | 901 SF | 5 | 2 BEDROOM | 4TH |
| 412 | 873 SF | 4 | 2 BEDROOM | 4TH |
| 2 BEDROOM | 35,741 SF | | | |
| 101 | 655 SF | 9 | 2 BEDROOM 2-STORY TOWNHOME | 1ST |
| 101 | 698 SF | 9 | 2 BEDROOM 2-STORY TOWNHOME | 2ND |
| 2 BEDROOM 2-STORY TOWNHOME | 1,353 SF | | | |
| 102 | 663 SF | 10 | 2 BEDROOM 2-STORY TOWNHOME | 1ST |
| 102 | 766 SF | 10 | 2 BEDROOM 2-STORY TOWNHOME | 2ND |
| 2 BEDROOM 2-STORY TOWNHOME | 1,429 SF | | | |
| 103 | 663 SF | 10 | 2 BEDROOM 2-STORY TOWNHOME | 1ST |
| 103 | 767 SF | 10 | 2 BEDROOM 2-STORY TOWNHOME | 2ND |
| 2 BEDROOM 2-STORY TOWNHOME | 1,430 SF | | | |
| 104 | 663 SF | 10 | 2 BEDROOM 2-STORY TOWNHOME | 1ST |
| 104 | 766 SF | 10 | 2 BEDROOM 2-STORY TOWNHOME | 2ND |
| 2 BEDROOM 2-STORY TOWNHOME | 1,429 SF | | | |
| 105 | 663 SF | 10 | 2 BEDROOM 2-STORY TOWNHOME | 1ST |
| 105 | 766 SF | 10 | 2 BEDROOM 2-STORY TOWNHOME | 2ND |
| 2 BEDROOM 2-STORY TOWNHOME | 1,429 SF | | | |
| 106 | 662 SF | 10 | 2 BEDROOM 2-STORY TOWNHOME | 1ST |

Area Schedule (UNITS AREA) BUILDING D

| UNIT NAME | AREA | TYPE | UNIT TYPE | FLOOR |
|----------------------------|-----------|------|----------------------------|-------|
| 106 | 766 SF | 10 | 2 BEDROOM 2-STORY TOWNHOME | 2ND |
| 2 BEDROOM 2-STORY TOWNHOME | 1,427 SF | | | |
| 107 | 663 SF | 10 | 2 BEDROOM 2-STORY TOWNHOME | 1ST |
| 107 | 766 SF | 10 | 2 BEDROOM 2-STORY TOWNHOME | 2ND |
| 2 BEDROOM 2-STORY TOWNHOME | 1,429 SF | | | |
| 108 | 663 SF | 10 | 2 BEDROOM 2-STORY TOWNHOME | 1ST |
| 108 | 766 SF | 10 | 2 BEDROOM 2-STORY TOWNHOME | 2ND |
| 2 BEDROOM 2-STORY TOWNHOME | 1,429 SF | | | |
| 109 | 663 SF | 10 | 2 BEDROOM 2-STORY TOWNHOME | 1ST |
| 109 | 766 SF | 10 | 2 BEDROOM 2-STORY TOWNHOME | 2ND |
| 2 BEDROOM 2-STORY TOWNHOME | 1,429 SF | | | |
| 110 | 663 SF | 10 | 2 BEDROOM 2-STORY TOWNHOME | 1ST |
| 110 | 767 SF | 10 | 2 BEDROOM 2-STORY TOWNHOME | 2ND |
| 2 BEDROOM 2-STORY TOWNHOME | 1,430 SF | | | |
| 111 | 638 SF | 9 | 2 BEDROOM 2-STORY TOWNHOME | 1ST |
| 111 | 756 SF | 9 | 2 BEDROOM 2-STORY TOWNHOME | 2ND |
| 2 BEDROOM 2-STORY TOWNHOME | 1,394 SF | | | |
| Grand total | 82,918 SF | | | |

10/13/2016 11:49:26 AM D:\COWW-Revit-Model\2015-04-03-DeTurk-Winery-Village-Apartments\15-043-DeTurk-Winery-Village-Apartments-BUILDING D - ZUHOOOR.rvt

