

LINE	LENGTH	BEARING
L93	46.86'	M&R1
L94	13.21'	M&R1
L95	14.60'	R1
L96	167.14'	N56°04'14"W M&R1
L97	167.14'	N56°04'14"W
L98	99.58'	N52°00'27"W
L99	85.10'	N56°04'14"W
L100	40.00'	S34°45'45"W
L101	5.00'	N33°55'44"E
L102	9.95'	N33°55'46"E
L109	30.92'	S06°51'46"E
L110	15.00'	S06°51'46"E
L111	31.09'	S06°51'46"E
L112	42.58'	S29°43'05"E
L113	15.00'	S60°16'55"W
L114	48.71'	S29°43'05"E

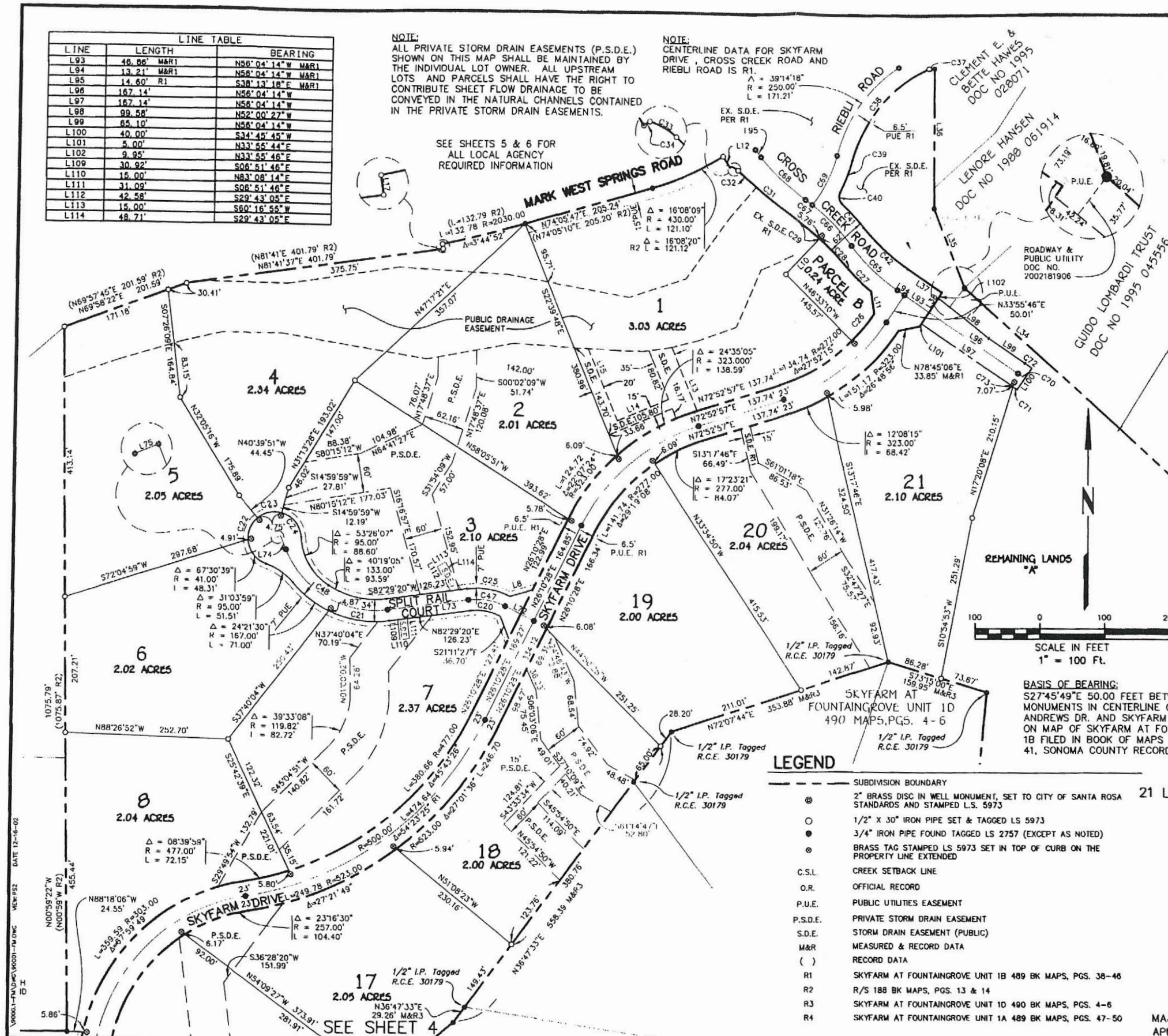
NOTE:
ALL PRIVATE STORM DRAIN EASEMENTS (P.S.D.E.) SHOWN ON THIS MAP SHALL BE MAINTAINED BY THE INDIVIDUAL LOT OWNER. ALL UPSTREAM LOTS AND PARCELS SHALL HAVE THE RIGHT TO CONTRIBUTE SHEET FLOW DRAINAGE TO BE CONVEYED IN THE NATURAL CHANNELS CONTAINED IN THE PRIVATE STORM DRAIN EASEMENTS.

NOTE:
CENTERLINE DATA FOR SKYFARM DRIVE, CROSS CREEK ROAD AND RIEBLI ROAD IS R1.

SEE SHEETS 5 & 6 FOR ALL LOCAL AGENCY REQUIRED INFORMATION

CURVE	LENGTH	RADIUS	DELTA
C20	48.80'	83.00'	33°41'07"
C21	95.47'	167.00'	32°45'21"
C22	38.13'	41.00'	53°17'18"
C23	39.83'	41.00'	55°39'50"
C24	50.98'	41.00'	71°14'33"
C25	68.79'	117.00'	33°41'07"
C26	53.58'	277.00'	11°04'56"
C27	47.89'	326.00'	8°24'59" M&R1
C28	66.82'	494.00'	7°44'58"
C29	41.65'	494.00'	4°49'52"
C31	85.52'	1006.00'	4°52'15"
C32	37.63'	1006.00'	2°08'35"
C33	12.03'	26.00'	26°30'46"
C34	2.80'	350.00'	0°21'25"
C37	8.56'	390.00'	1°15'26"
C38	191.52'	(190.26' R1)	48°59'14" (48°39'55" R1)
C39	52.57'	M&R1	13°19'36" M&R1
C40	18.67'	M&R1	76°24'38" M&R1
C41	50.07'	(50.06' R1)	8°38'27" (8°38'23" R1)
C42	94.54'	M&R1	16°55'41" M&R1
C47	58.79'	100.00'	33°41'08"
C48	196.22'	150.00'	74°57'00"
C65	98.81'	R1	18°52'15" R1
C66	88.94'	R1	18°59'12" R1
C67	12.82'	R1	2°28'56" R1
C68	96.41'	R1	18°24'48" R1
C69	85.43'	R1	24°28'30" R1
C70	13.08'	555.50'	1°20'55"
C71	7.94'	534.50'	0°51'02"
C72	16.06'	574.50'	1°36'07"
C73	4.84'	534.50'	0°31'06"

LINE	LENGTH	BEARING
L6	52.80'	S81°14'47"E
L7	36.23'	S24°46'43"E
L8	38.70'	S73°32'24"W
L10	78.28'	N43°26'50"E
L11	34.71'	S08°18'55"E
L12	19.85'	(20.00' R2) S32°02'33"E (S32°03'10"E R2)
L13	104.93'	N22°45'32"W
L14	85.80'	S87°14'28"W
L15	119.05'	S22°45'32"E
L17	7.64'	M&R2
L34	323.62'	(323.71' R2) S46°32'36"E (S48°32'10"E R2)
L35	129.69'	M&R2
L36	216.48'	M&R2
L37	64.28'	(64.29' R1) N56°04'35"W (N56°04'14"W R1)
L38	62.00'	M&R1
L72	50.00'	N63°49'31"W
L73	126.23'	S82°29'20"W
L74	22.24'	N22°33'40"W
L75	10.01'	S67°28'21"W



BASIS OF BEARING:
S27°45'49"E 50.00 FEET BETWEEN CITY MONUMENTS IN CENTERLINE OF SAINT ANDREWS DR. AND SKYFARM DR. AS SHOWN ON MAP OF SKYFARM AT FOUNTAIN GROVE 1B FILED IN BOOK OF MAPS 489 AT PAGE 41, SONOMA COUNTY RECORDS.

LEGEND

- SUBDIVISION BOUNDARY
- ⊙ 2" BRASS DISC IN WELL MONUMENT, SET TO CITY OF SANTA ROSA STANDARDS AND STAMPED L.S. 5973
- 1/2" X 30" IRON PIPE SET & TAGGED LS 5973
- 3/4" IRON PIPE FOUND TAGGED LS 2757 (EXCEPT AS NOTED)
- ⊙ BRASS TAG STAMPED LS 5973 SET IN TOP OF CURB ON THE PROPERTY LINE EXTENDED
- C.S.L. CREEK SETBACK LINE
- O.R. OFFICIAL RECORD
- P.U.E. PUBLIC UTILITIES EASEMENT
- P.S.D.E. PRIVATE STORM DRAIN EASEMENT
- S.D.E. STORM DRAIN EASEMENT (PUBLIC)
- M&R MEASURED & RECORD DATA
- () RECORD DATA
- R1 SKYFARM AT FOUNTAIN GROVE UNIT 1B 489 BK MAPS, PGS. 38-46
- R2 R/S 188 BK MAPS, PGS. 13 & 14
- R3 SKYFARM AT FOUNTAIN GROVE UNIT 1D 490 BK MAPS, PGS. 4-6
- R4 SKYFARM AT FOUNTAIN GROVE UNIT 1A 489 BK MAPS, PGS. 47-50

SKYFARM AT FOUNTAIN GROVE UNIT 2B

CITY OF SANTA ROSA
COUNTY OF SONOMA, STATE OF CALIFORNIA
21 LOTS - PARCELS A & B - REMAINING LANDS A & B DESIGNATED REMAINDER
255.92 ACRES

BEING THE PARCEL OF LAND DESCRIBED IN DEED TO SKYFARM ESTATES, L.P., A CALIFORNIA LIMITED PARTNERSHIP DATED FEBRUARY 21, 1990 AND RECORDED FEBRUARY 22, 1990 UNDER DOCUMENT NUMBER 1990 018351 SONOMA COUNTY RECORDS.

BRELJE & RACE
CONSULTING CIVIL ENGINEERS
5570 SKYLANE BLVD. SANTA ROSA CA 95403 707/576-1322

MAJ 98-044 NOVEMBER 2002 SHEET 3 OF 6
APN: 173-770-001 & 002

CITY OF SANTA ROSA
90001-FM.DWG
JUL 27 2016

COMMUNITY DEVELOPMENT DEPARTMENT