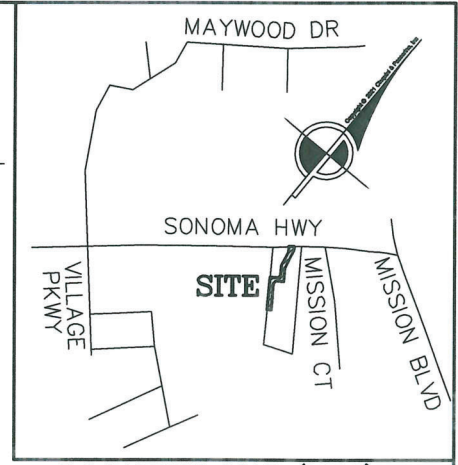


EXHIBIT B

STATE HIGHWAY 12



LOCATION MAP (NTS)

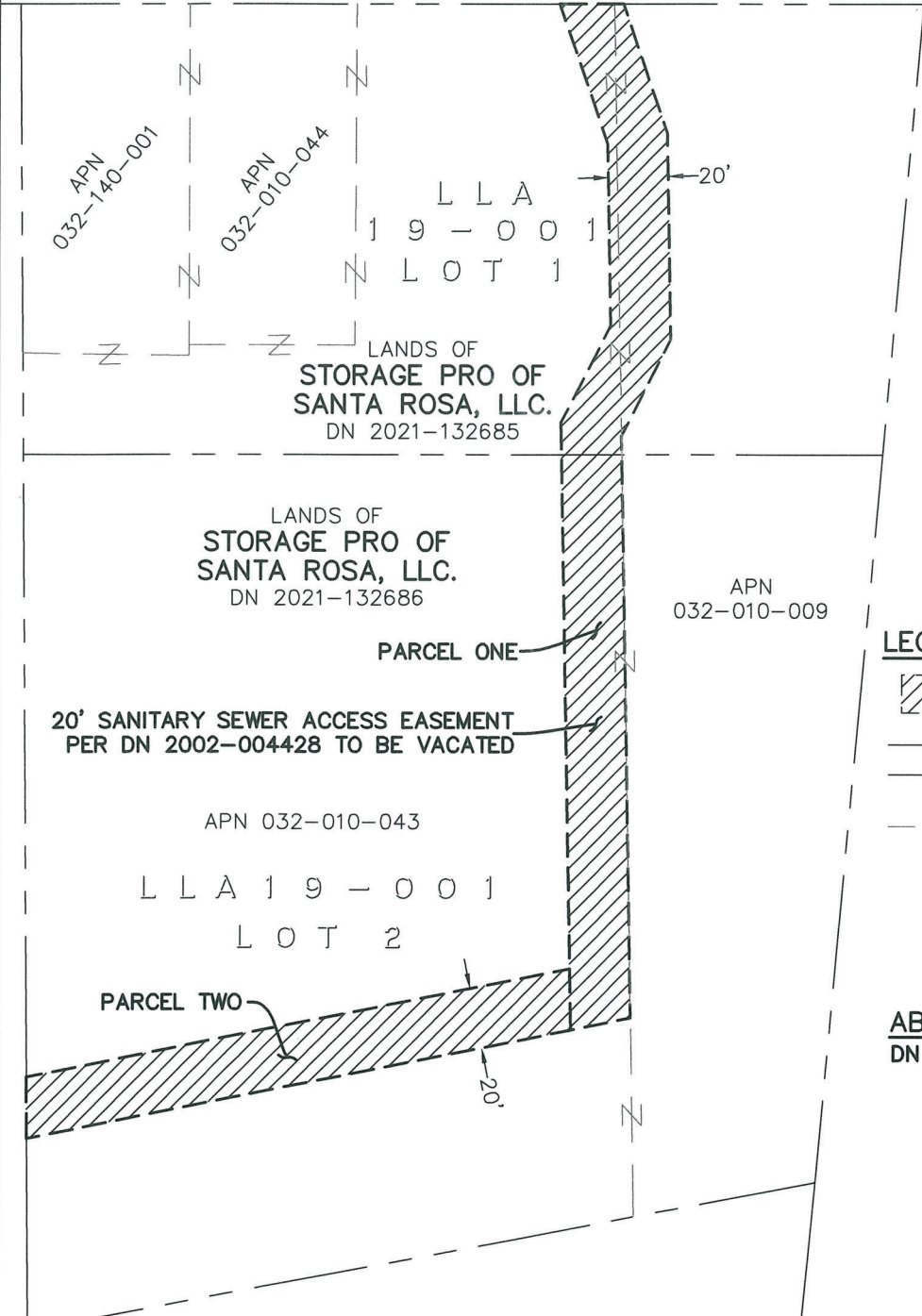


LEGEND

-  SANITARY SEWER ACCESS EASEMENT
-  PROPERTY BOUNDARY
-  ADJACENT BOUNDARY
-  EXTINGUISHED BOUNDARY

ABBREVIATIONS

DN = DOCUMENT NUMBER



AUTHORITY:

OWNER AND MAILING ADDRESS	PROPERTY AREAS	CITY OF SANTA ROSA	
STORAGE PRO OF SANTA ROSA, LLC. 1615 BONANZA STREET, SUITE 208 WALNUT CREEK, CA 94956		VACATION OF SANITARY SEWER EASEMENTS	
A.P. No. 032-140-001, 032-010-009 032-010-043, 032-010-044		Scale: 1"=60'	Date: 12/16/21
O.R. No. D.N. 2013-055950	CITY ACQUISITION DEED	DWN. A.JD	APPROVED
ADDRESS 4420 HIGHWAY 12	O.R. _____	CHK. AGC	FILE NO. R.-

Y:\7723\Cad\7723EXHT_SAE_VACATION.dwg
Dec 16, 2021 - 5:05pm