

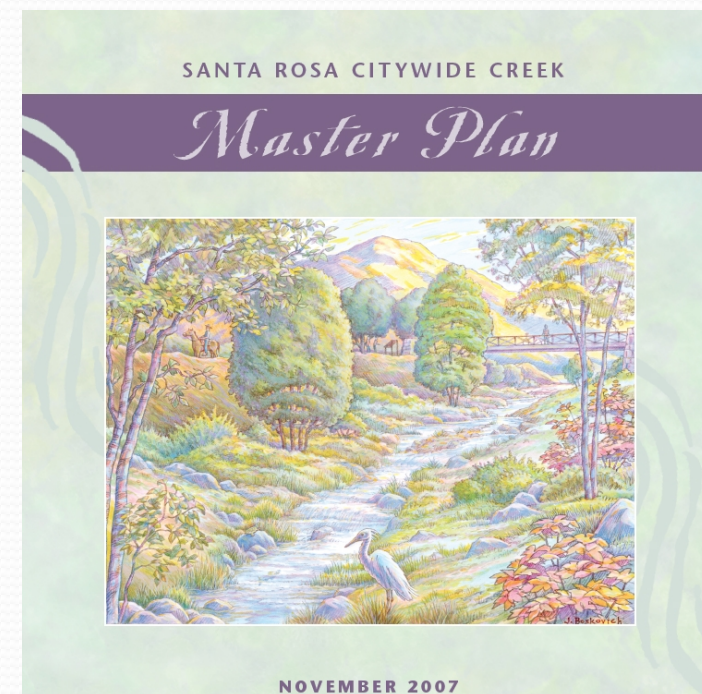
Focused Update Citywide Creek Master Plan

City Council
August 27, 2013



Introduction

- Citywide Creek Master Plan adopted in 2007.
- Guidelines, policies, and criteria to protect, restore, enhance, and manage almost 100 miles of waterways in Santa Rosa.
- Watershed planning areas.
- Includes city-wide proposals and site-specific projects.



Scope of Focused Update

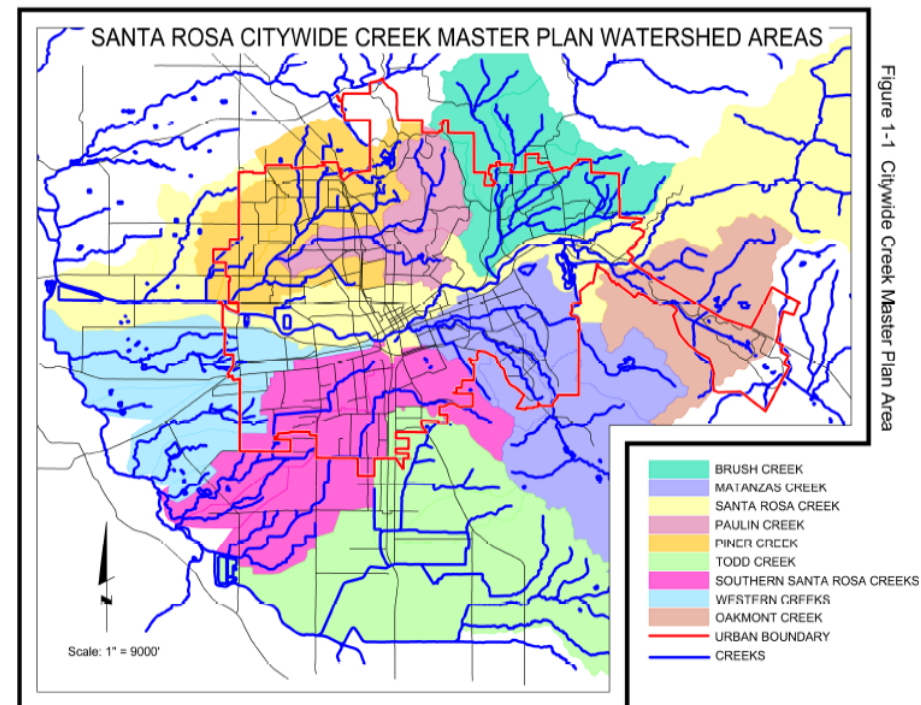
- Clarify and reaffirm goals and policies.
- Update creek maps and text.
- Incorporate and plan for waterways not previously included.
- Revise the final plan to be more user-friendly.
- Prioritize Citywide Creek Master Plan projects.
- Coordinate with Sonoma County Water Agency and County of Sonoma.

Presentation Overview

- Plan Highlights
- Environmental Review
- Agency Coordination
- Public Participation
- Board and Committee Review
- Planning Commission Recommendation

Chapter 1: Introduction

- Minor text changes to reflect current General Plan and focused update.
- Updated Watershed Planning Areas map exhibit.



Chapter 2: Goals, Objectives, and Policies

Complete vision for an integrated and healthy creek system with many community benefits

- Park-related goals and policies updated:
 - Public plazas and gathering places identified.
 - Creek restoration projects proposed in City parks.

Chapter 2: Goals, Objectives, and Policies

- Low Impact Development storm water management requirements.
- Americans with Disabilities Act.

Chapter 3: Plan Concepts

Physical modifications including habitat restoration and creek trail improvements

- Stream maintenance and creek restoration activities.
- New table identifies the differences and similarities between creek preservation, enhancement, and restoration projects.
- Acknowledges completed flood hazard studies.
- Provides more information about how certain creeks function as flood control channels.

Chapter 3: Plan Concepts

- Revised design guidance for intersections of trails and streets.

Chapter 3: Plan Concepts

- Retain all existing Sonoma County Water Agency maintenance access roads.
 - 2007 Plan: Eliminate access roads from one side of certain creeks and called for creek restoration.
 - 2013 Plan: Retain maintenance access roads and calls for restoration.

Chapter 4: Watershed-Specific Recommendations

- ❖ *Watershed planning area descriptions.*
- ❖ *Details of each creek reach and recommended Recreation, Access, and Transportation Concepts.*
- ❖ *Watershed planning area maps (16) updated consistent with the text.*

Chapter 4: Watershed-Specific Recommendations

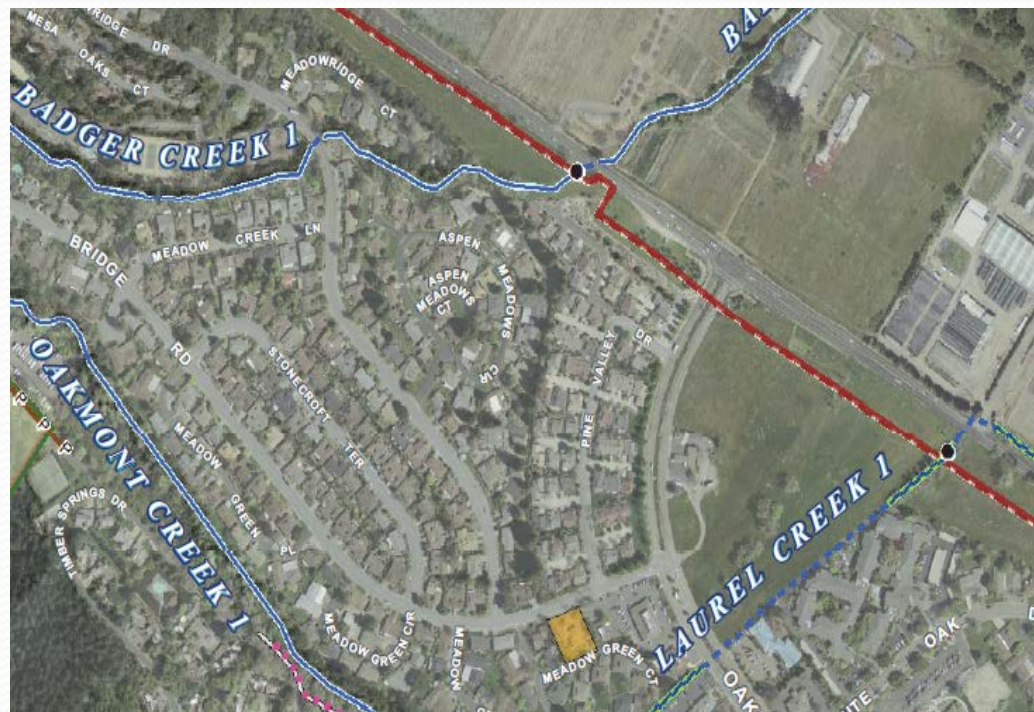
- Clarifies existing conditions and planned improvements where previous text was unclear or where conditions changed.
- Depicts existing bike facilities and planned facilities near creeks consistent with the 2010 Bicycle and Pedestrian Master Plan.

Chapter 4: Watershed-Specific Recommendations

- Depicts connections to existing and planned County Regional Parks amenities located outside of the City's Urban Growth Boundary when located near creeks.
- Extends depiction of creeks past the Urban Growth Boundary.

Chapter 4: Watershed-Specific Recommendations

- Adds two new watershed planning areas, Oakmont (part of Santa Rosa in 2007 plan) and Western (previously Southern).
- Recognizes additional creeks in Oakmont including Laurel, Badger, Melita, Hood Mountain, Coney, Charlotte, and Anella.



Chapter 4: Watershed-Specific Recommendations

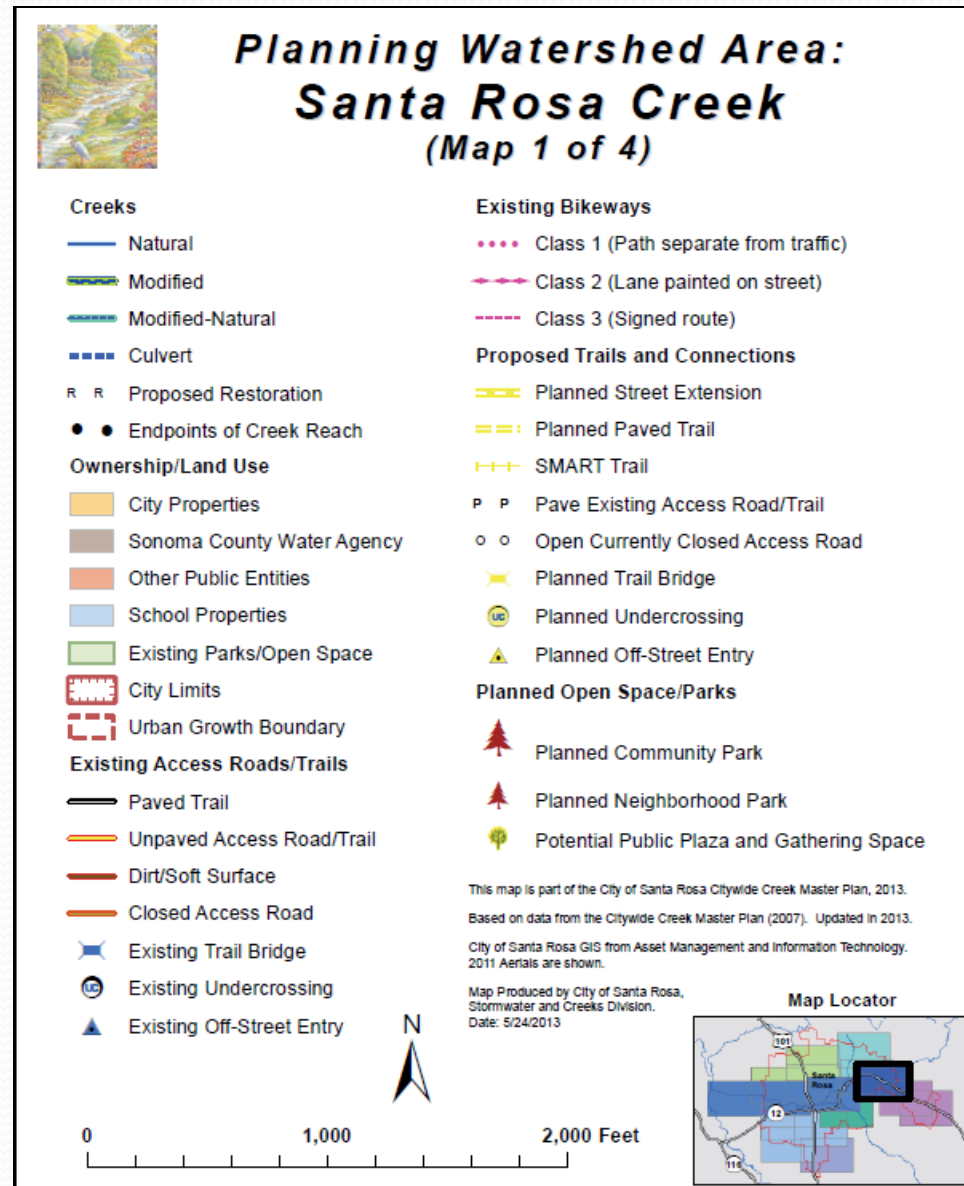
- Recognizes Progress and Promissory Creeks in Rincon Valley, Nagasawa Creek in Fountaingrove, and Finley and Riccas Creeks in west Santa Rosa.
- Reflects name changes: Kawana Springs Creek (Upper Colgan) and Sierra Park Creek (Arroyo Sierra).

Chapter 5: Implementation Strategy

- Prioritization by project type rather than by watershed planning area.
- Specific criteria for various project types:
 - Creek Habitat Restoration/Enhancement
 - Parks and Open Space
 - Trails and Connections
 - Water Quality
 - Flood Protection

Map Changes

- Map key simplified and reorganized.



Map Changes

- Proposed restoration areas depicted with “R” notation along creeks.
- Existing parks shown consistent with General Plan.



Map Changes

- Potential Public Plazas and Gathering Places depicted using oak tree symbol.



California Environmental Quality Act

- Addendum to the Santa Rosa Citywide Creek Master Plan Environmental Impact Report (EIR)

Agency Coordination

- Sonoma County Permit and Resource Management Department and Regional Parks
- Sonoma County Water Agency
- Others

Public Participation

- Community Meetings
 - December 12, 2012 and June 12, 2013
- Public Outreach
- Comments

Boards and Committee Comments

June 20 Board of Public Utilities (staff briefing)
Bicycle and Pedestrian Advisory Board

June 27 Waterways Advisory Committee
Design Review Board

July 24 Board of Community Services

Planning Commission Action

July 11, 2013

- Held public hearing and recommended adoption of the updated Citywide Creek Master Plan

Recommendation

- Adopt the Citywide Creek Master Plan update.